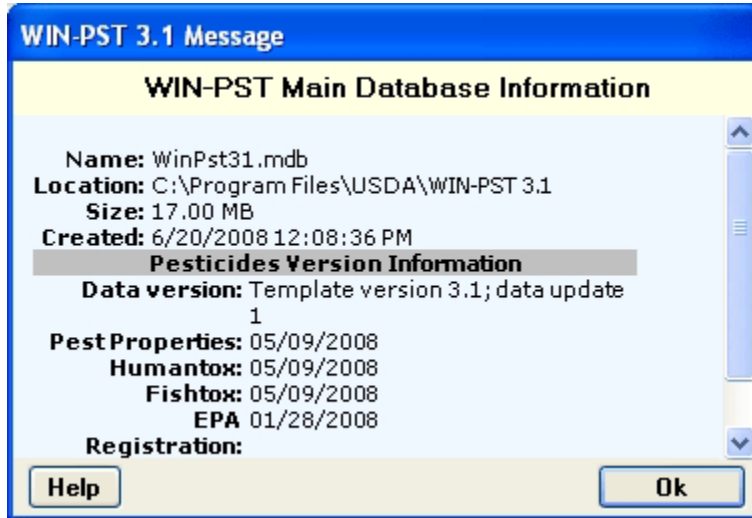


WIN-PST 3.1 – Update Pesticide Data

In Windows Pesticide Screening Tool (WIN-PST), go to **Help, Database Information, WIN-PST Main database** to see the Main database Pesticide Version Information as shown in the example below:



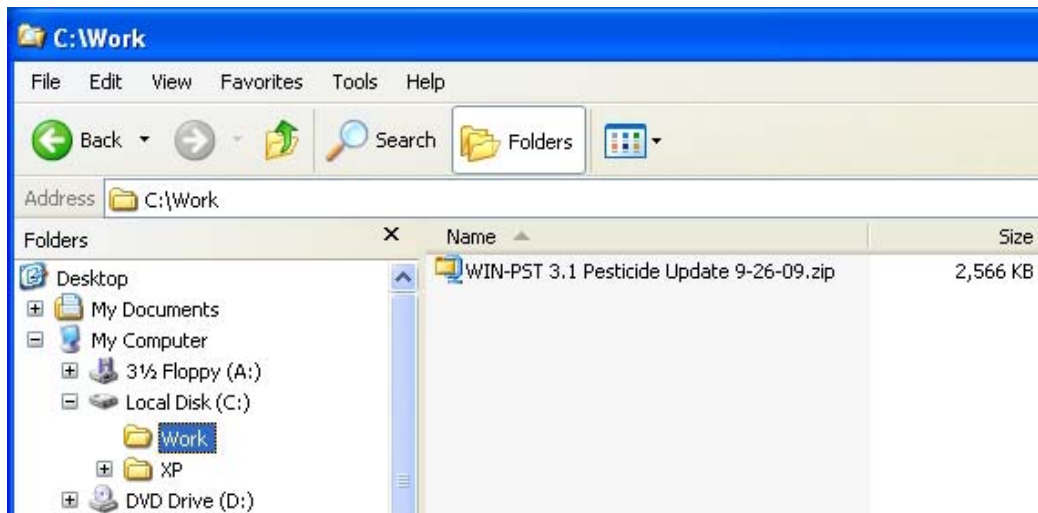
Pesticide database updates for the Windows Pesticide Screening Tool database can be downloaded from the USDA/NRCS WIN-PST web page located at:

<http://www.wsi.nrcs.usda.gov/products/W2Q/pest/winpst.html>

The downloadable file is in zip format and can be unzipped using WinZip or an equivalent application. The examples below use a temporary directory location of C:\Work and a 'WIN-PST 3.1 Pesticide Update 9-26-09.zip' file.

Step 1 – Download the pesticides update zip file

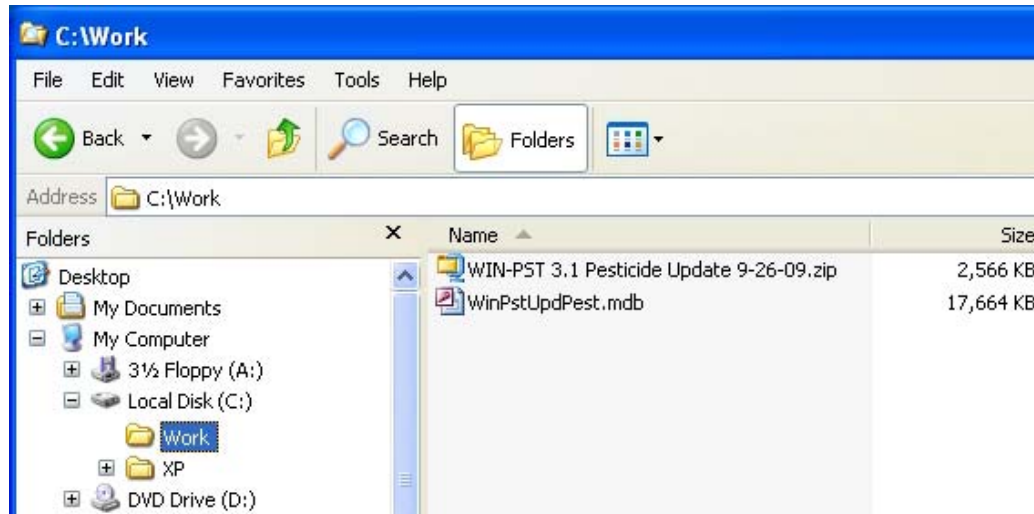
The example below shows the 'WIN-PST 3.1 Pesticide Update 9-26-09.zip' file downloaded into the C:\Work directory:



Step 2 – Unzip

Use WinZip or an equivalent application to unzip the downloaded file into the C:\Work directory.

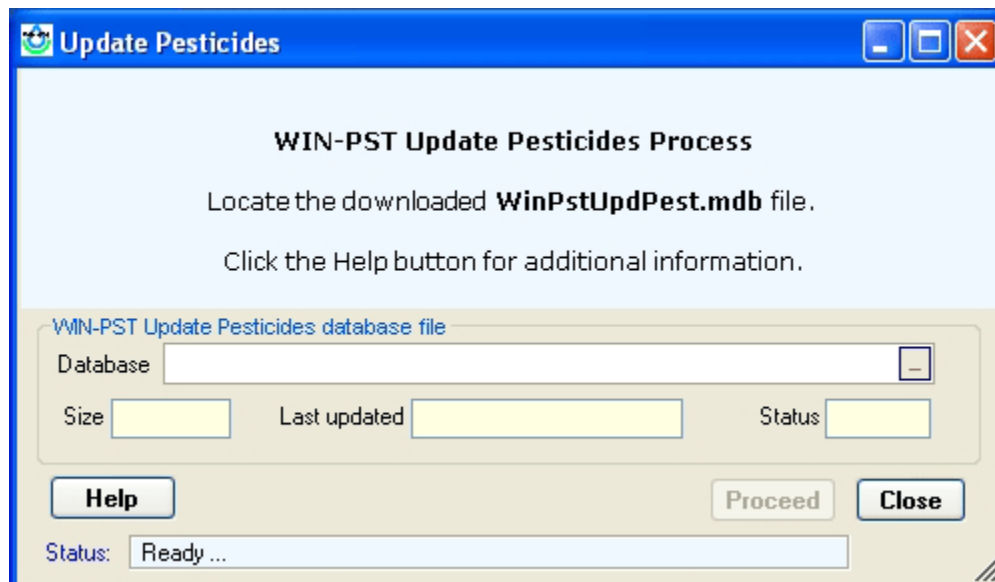
The example below show the unzipped ‘WinPstUpdPest.mdb’ file in the C:\Work directory:



The WinPstUpdPest.mdb file is an Access database containing updated pesticides data. See the Update Pesticides topic in WIN-PST Help for more information.

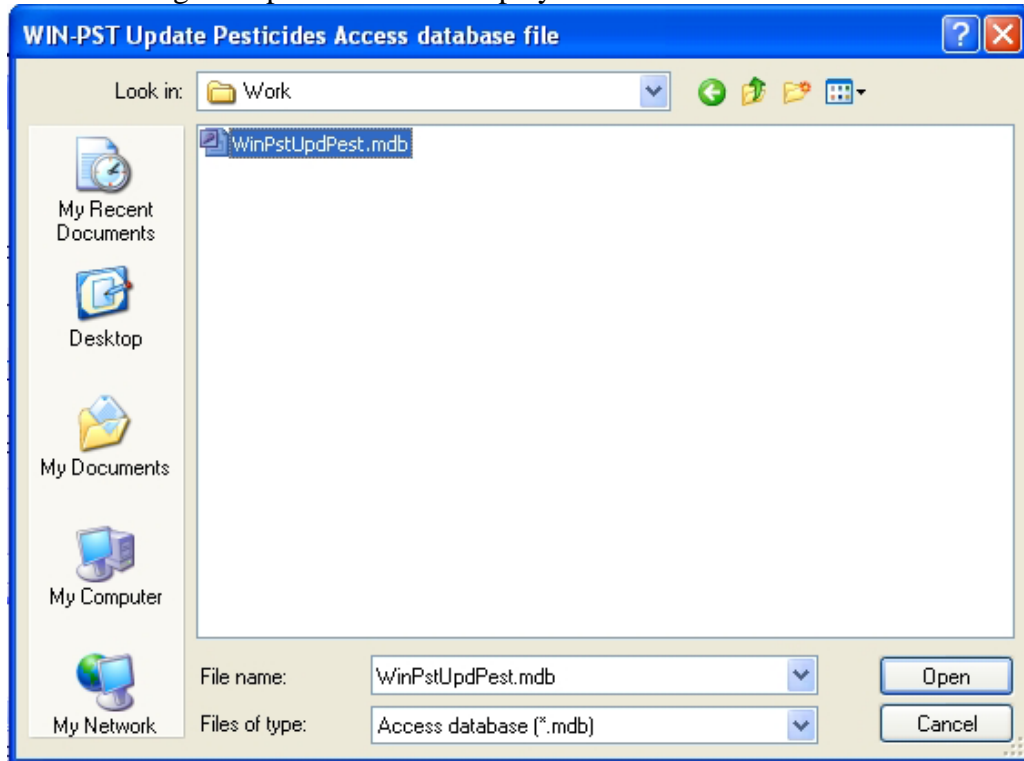
Step 3 – Run WIN-PST Update Pesticides

In WIN-PST, go to **Tools, Update Pesticides** to see the following example screen:

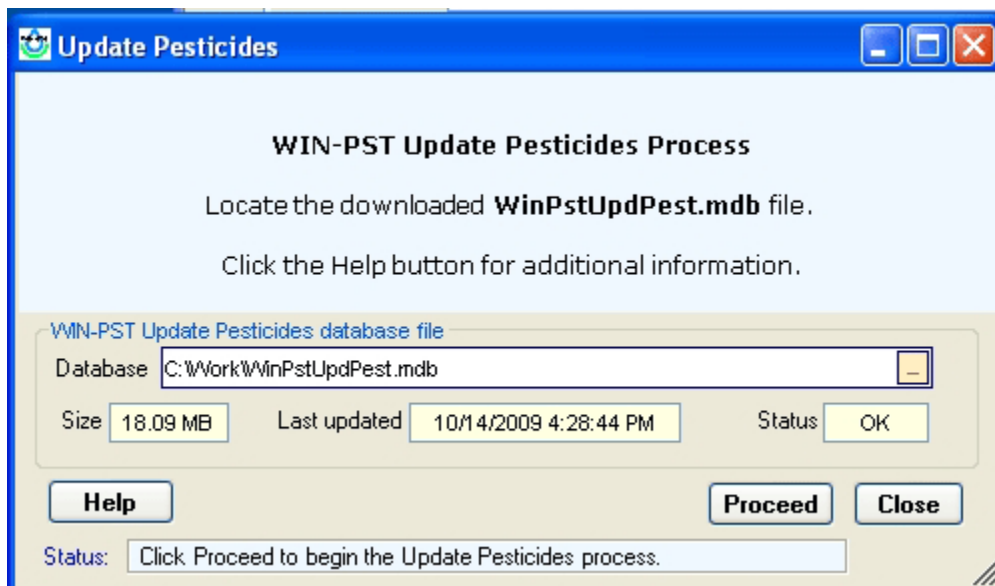


On the right-side of the Database, click on the ‘...’ selector box to locate the downloaded ‘WinPstUpdPest.mdb’ file.

The following example screen will display:

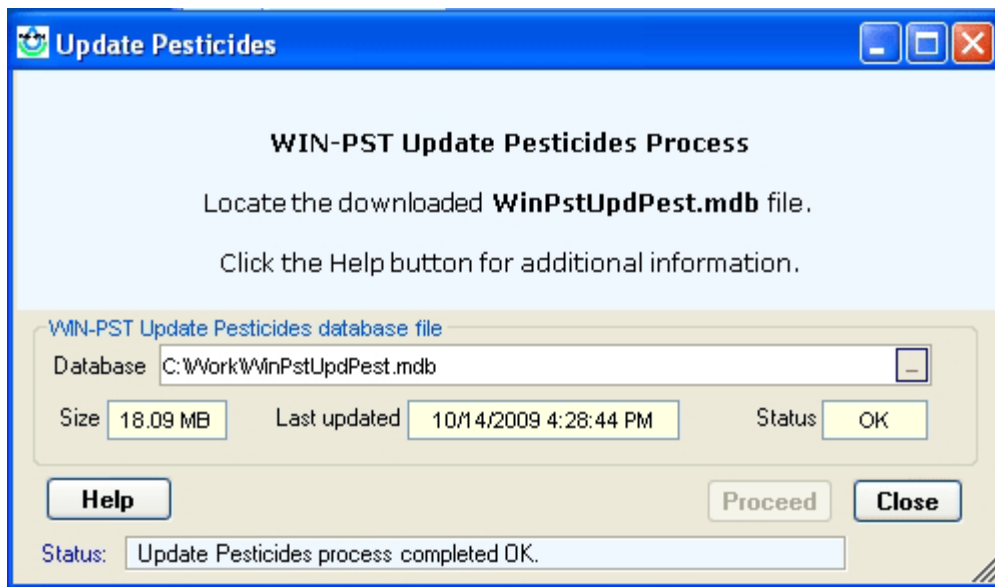


Change the **Look in:** location to find the 'WinPstUpdPest.mdb' (in the example above the location is C:\Work).
Select the 'WinPstUpdPest.mdb' into **File name:**.
Click the **Open** button to proceed.



Click the **Proceed** button to begin the Update Pesticides process.

The following example screen will display when the process has completed:

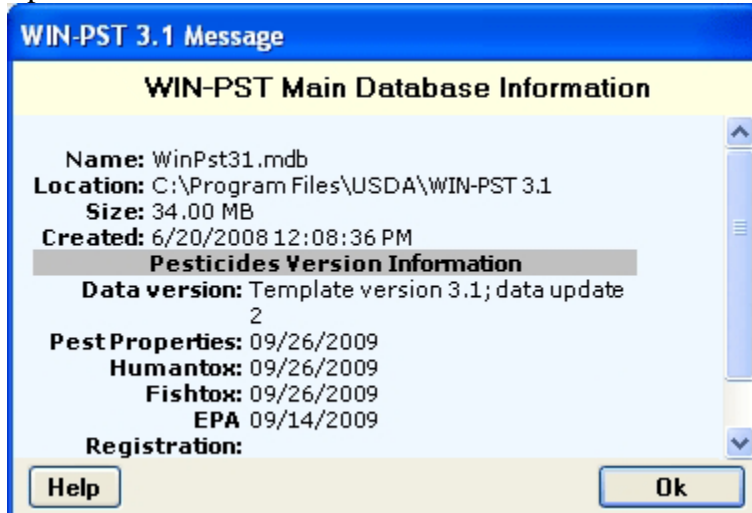


When completed, the Status: message will display 'Update Pesticides process completed OK.'

Click the **Close** button to return to WIN-PST.

Step 4 – Verify WIN-PST Updated Pesticides

Exit and restart WIN-PST. Go to **Help, Database Information, WIN-PST Main database** to see the updated Main database Pesticide Version Information as shown in the example below:



The **Pesticides Version Information** now reflects the changes in:

Data version: Template version 3.1; update 2

Pest Properties: 09/26/2009

Humantox: 09/26/2009

Fishtox: 09/26/2009

EPA Registration: 09/14/2009