

The background of the slide is a photograph of ocean waves. The top portion shows a white, foamy wave crest against a pale sky. Below this, the water transitions into a deep blue, with ripples and smaller waves visible. A white rectangular box with a thin blue border is centered on the page, containing the main text.

Draft Northeast Ocean Plan

May 25, 2016

NOAA MPA FACA

 **OCEAN PLANNING**
IN THE **NORTHEAST**

Why do we need this plan?

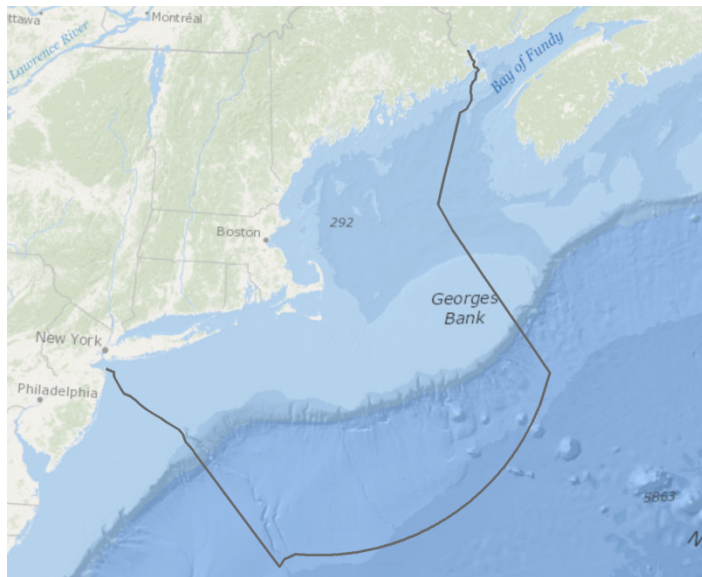
- Ocean is a busy place
- Need to manage for new uses
- Understand changing ecosystems and economies
- Need for government to work together better
- Focused regional discussion on future of the ocean



Northeast Regional Planning Body



- Six New England states
- Six federally-recognized tribes
- Nine federal agencies
- New England Fishery Management Council
- Two ex-officio members: NY and Canada





How was the
Northeast
Ocean Plan
developed?

OUTREACH + ENGAGEMENT

Regional Stakeholder forums + workshops

3–6 weeks before each
RPB meeting

Focus on upcoming RPB
decisions

Subject specific projects + targeted outreach + work groups

Cumulatively reached
thousands of people across
many issue areas

Expert/scientific review of
methods, products

State public meetings + advisory groups

Interactive and informal
Throughout New England

Website + social media + eblasts

Calendar and RPB
updates

Project reports, meeting
summaries, other
products

Existing meetings + events

Leveraged existing
opportunities to reach
stakeholders

Various topics, throughout
New England



OCEAN RESOURCES & ACTIVITIES



MARINE LIFE & HABITAT



NATIONAL SECURITY



AQUACULTURE



RESTORATION



COMMERCIAL & RECREATIONAL FISHING



OFFSHORE SAND RESOURCES



CULTURAL RESOURCES



RECREATION



MARINE TRANSPORTATION



ENERGY & INFRASTRUCTURE

NORTHEAST OCEAN DATA PORTAL



NORTHEAST OCEAN DATA

Maps and data for ocean planning in the northeastern United States

[HOME](#) [MAPS](#) [DATA](#) [ABOUT](#)   

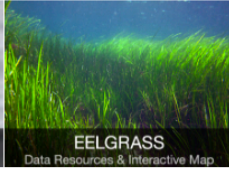
DATA EXPLORER

Interact with any combination of data in the Data Explorer — Human Activities, Marine Life, and Environment

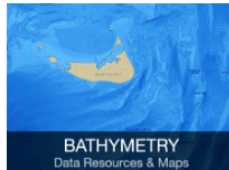
Human Activities




Marine Life



Environment





What are the
different parts
of the plan?

Northeast Ocean Plan goals

1. Healthy ocean and coastal ecosystems
2. Effective decision-making
3. Compatibility among past, current and future ocean uses

- 1 Northeast region and need for ocean planning
- 2 Plan process and development of Data Portal
- 3 Using plan data in regulatory and management decisions across 10 ocean management topics
- 4 Plan implementation
- 5 Future science and research priorities

Plan Describes Ten Primary Ocean Resources and Activities

1. Overview of **importance** of each ocean resource or activity to ocean management
2. **Regulatory and management landscape** of that resource/activity
3. Peer-reviewed **maps and data** available on portal
4. Regulatory and management **actions** identified by RPB agencies
 - ✓ Maintain, update and develop additional data for the Portal
 - ✓ Inform regulatory/environmental review and management decisions
 - ✓ Identify potentially affected stakeholders and resources
 - ✓ Enhance interagency coordination

Ocean Resources & Activities



MARINE LIFE +
HABITAT



RESTORATION



CULTURAL
RESOURCES



MARINE
TRANSPORTATION



NATIONAL
SECURITY



COMMERCIAL &
RECREATIONAL
FISHING



RECREATION



ENERGY &
INFRASTRUCTURE



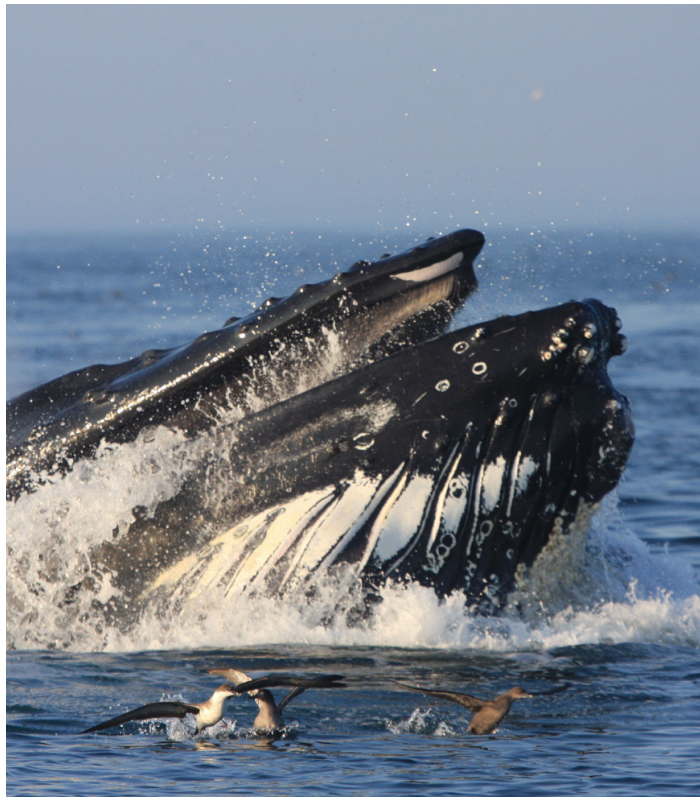
AQUACULTURE



OFFSHORE SAND
RESOURCES



MARINE LIFE &
HABITAT





Marine Life & Habitat

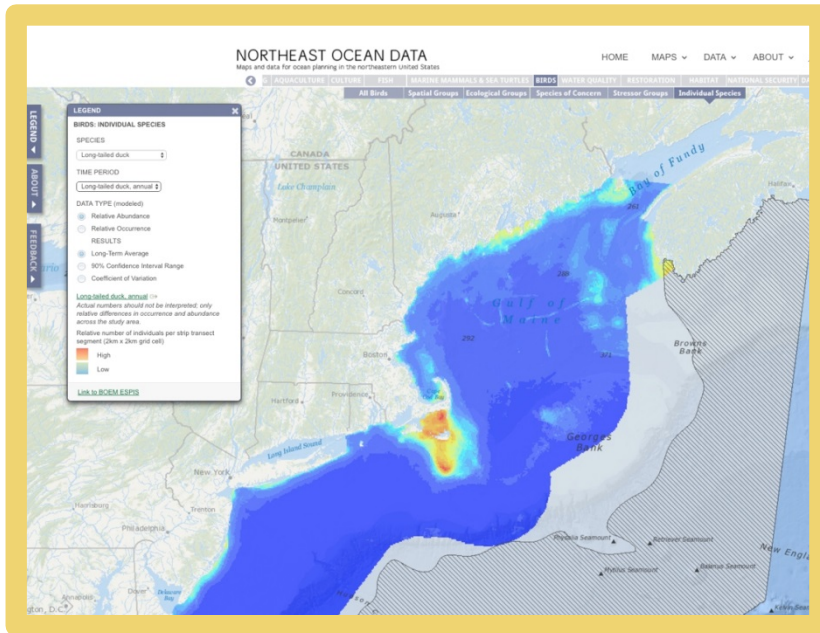
This section of the plan describes unprecedented library of regional data products characterizing marine life and habitat including:

- Maps of species (distribution and abundance)
- Maps of habitat types
- Draft maps of species groupings developed to assist decision-making



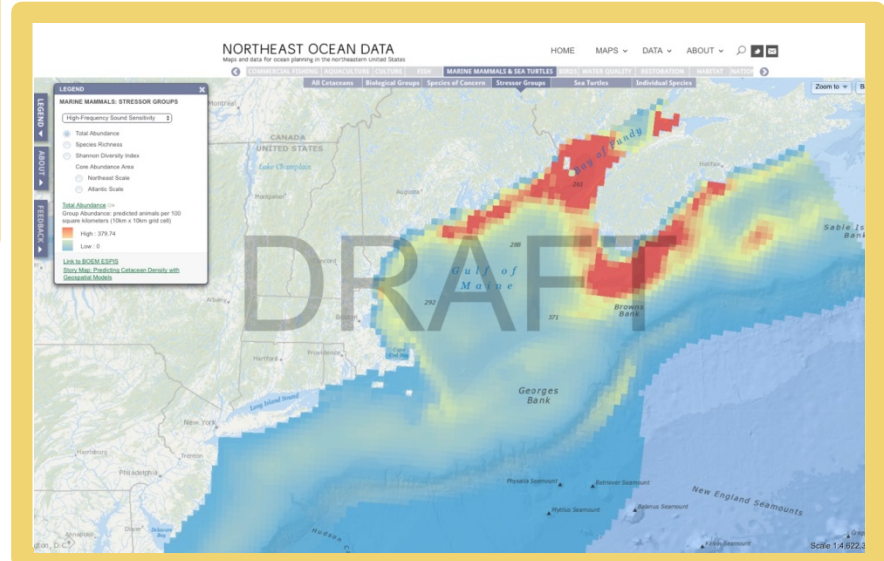
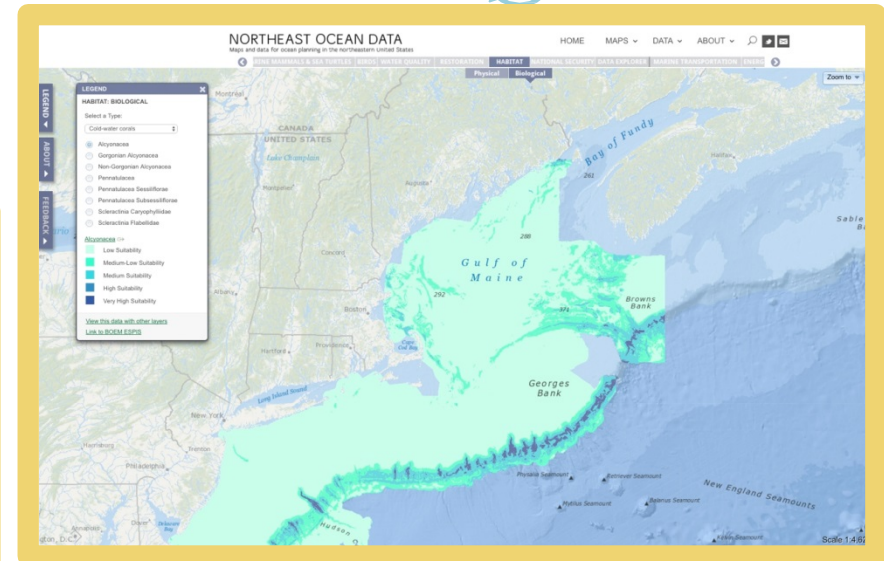
MARINE LIFE & HABITAT

Corals



Long-tailed duck: predicted annual relative abundance

Mammals sensitive to high frequency sound





Marine Life & Habitat

Defines Important Ecological Areas as habitat areas and species, guilds, or communities critical to ecosystem function, recovery, and resilience. They are further divided by five components:

- Areas of high productivity
- Areas of high biodiversity
- Areas of high species abundance
- Areas of vulnerable marine resources
- Areas of rare marine resources



OVERVIEW ACTIONS

ML-1 Update marine life data ML-2 Update habitat data

ML-3 Identify opportunities to update marine life and habitat data every five years

ML-4 Advance the mapping of Important Ecological Areas



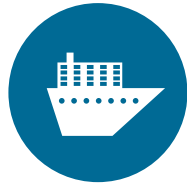
OVERVIEW ACTIONS

ML-5 Use marine life and habitat data as key inputs to monitor ecosystem health

ML-6 Use marine life and habitat data to inform applicable review processes under federal environmental and regulatory laws

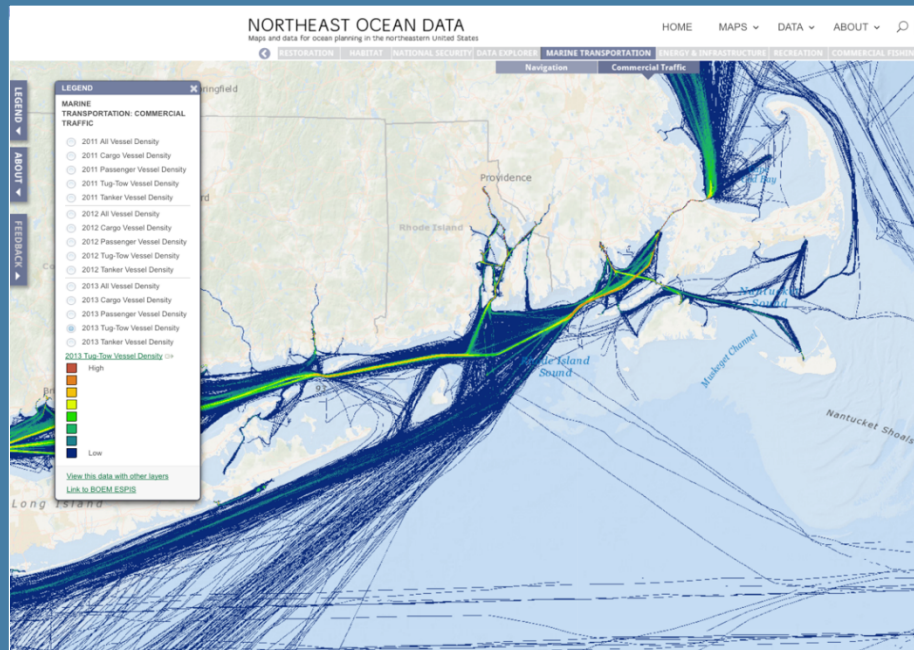
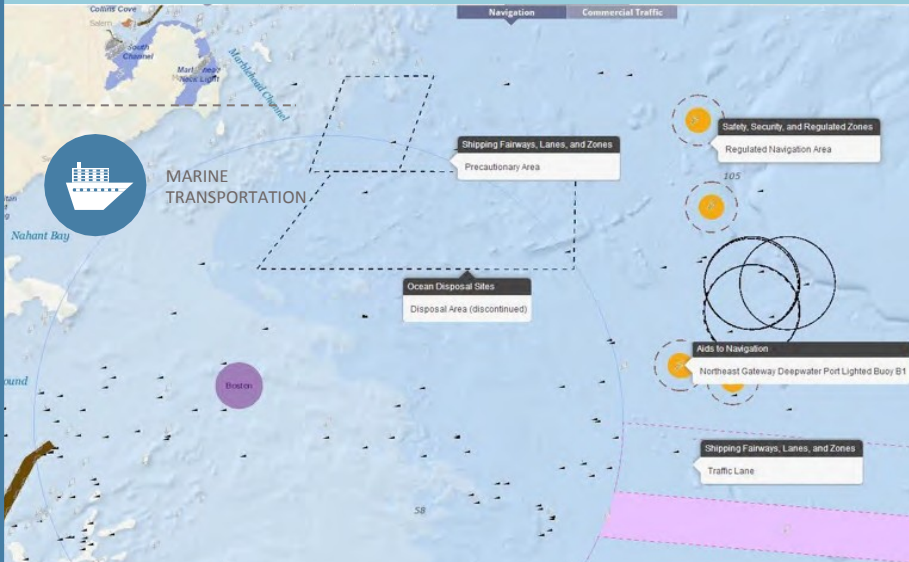
ML-7 Use marine life and habitat data to inform responsibilities within managed areas

ML-8 Use marine life and habitat data to inform other management activities

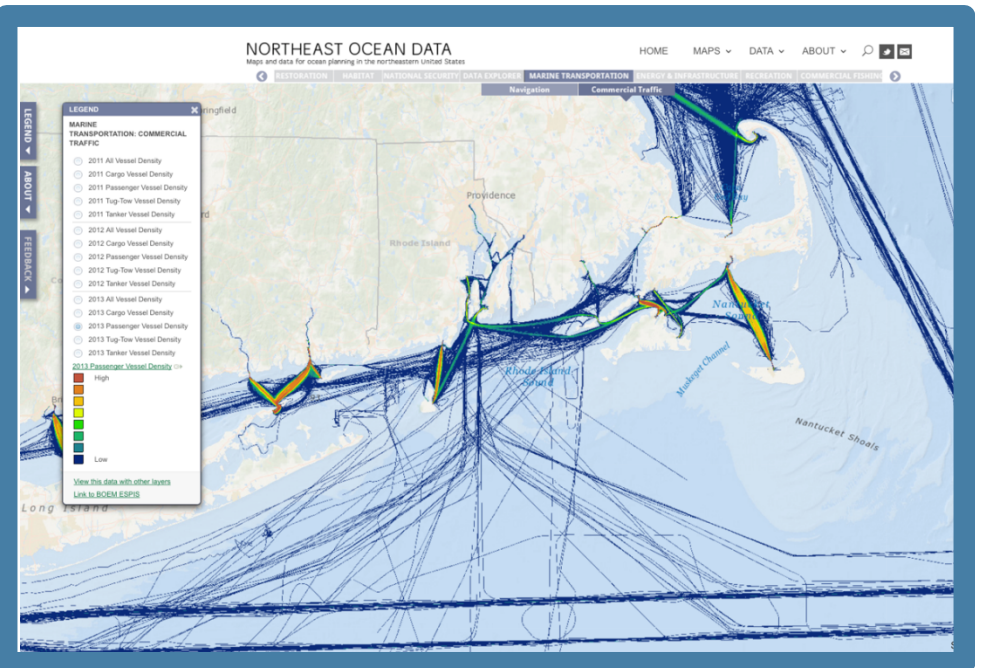


MARINE
TRANSPORTATION





Approach to Boston Harbor



Passenger vessels

Tug Tow vessels



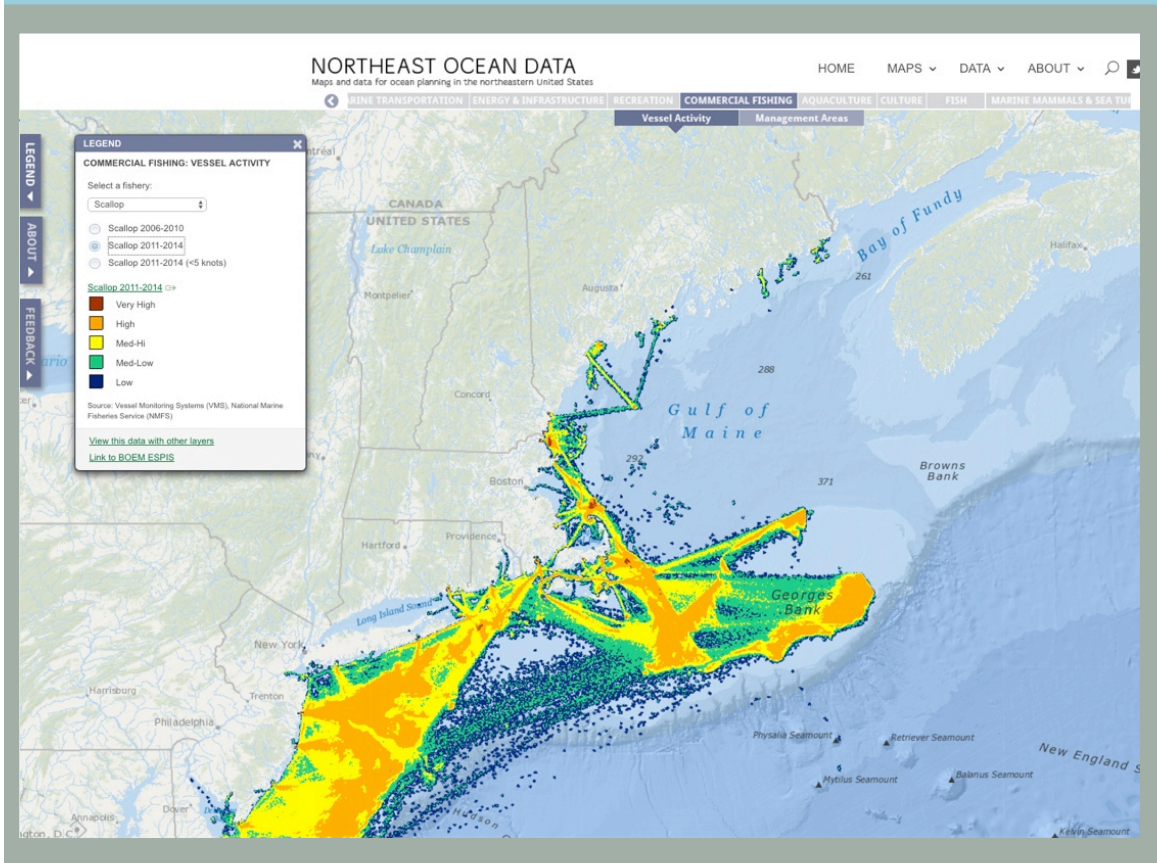
OVERVIEW ACTIONS

- MT-1 Maintain existing maps and data on the Portal
- MT-2 Provide additional data through new analyses
- MT-3 Use the Portal and Plan to inform regular operations and management of the MTS
- MT-4 Use the Portal and Plan to identify potential conflicts, impacts and potentially affected maritime stakeholders during permitting and leasing for new proposed activities
- MT-5 Use the Plan to inform dredging and federal navigation projects
- MT-6 Continue outreach to maritime stakeholders to understand current trends and the potential effects of new activities to the MTS



COMMERCIAL &
RECREATIONAL
FISHING



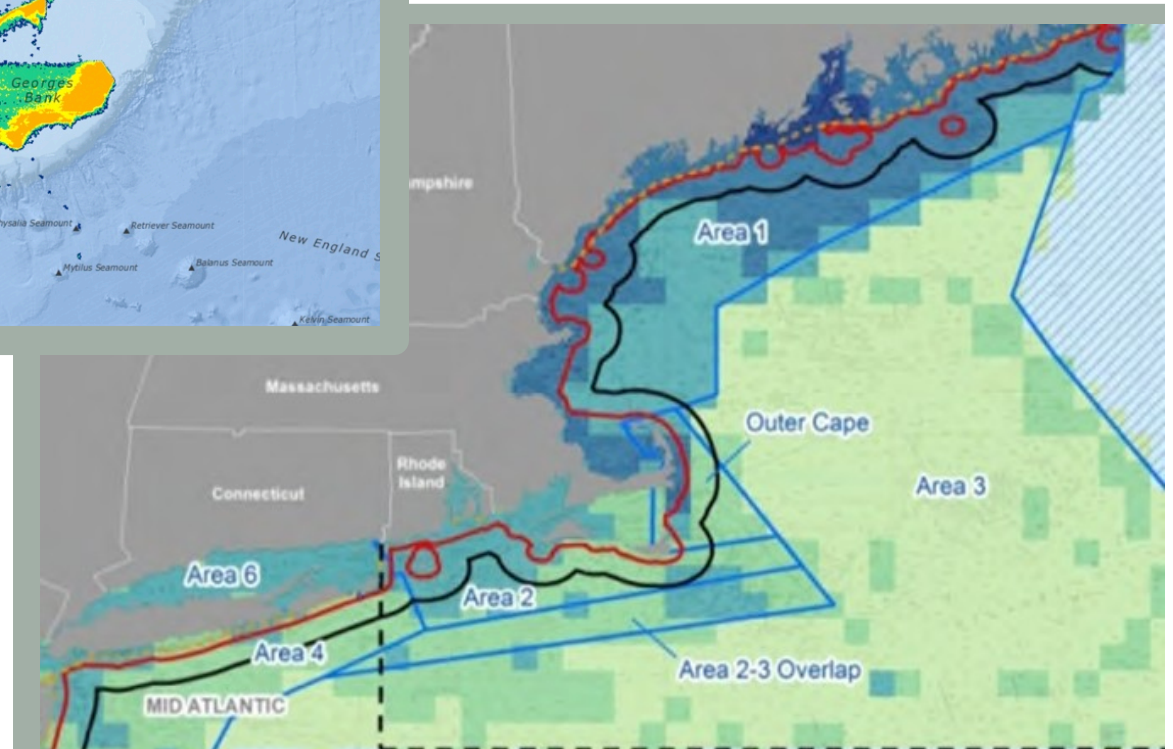


All VMS Scallop Vessels
2011-2014



NORTHEAST OCEAN PLAN

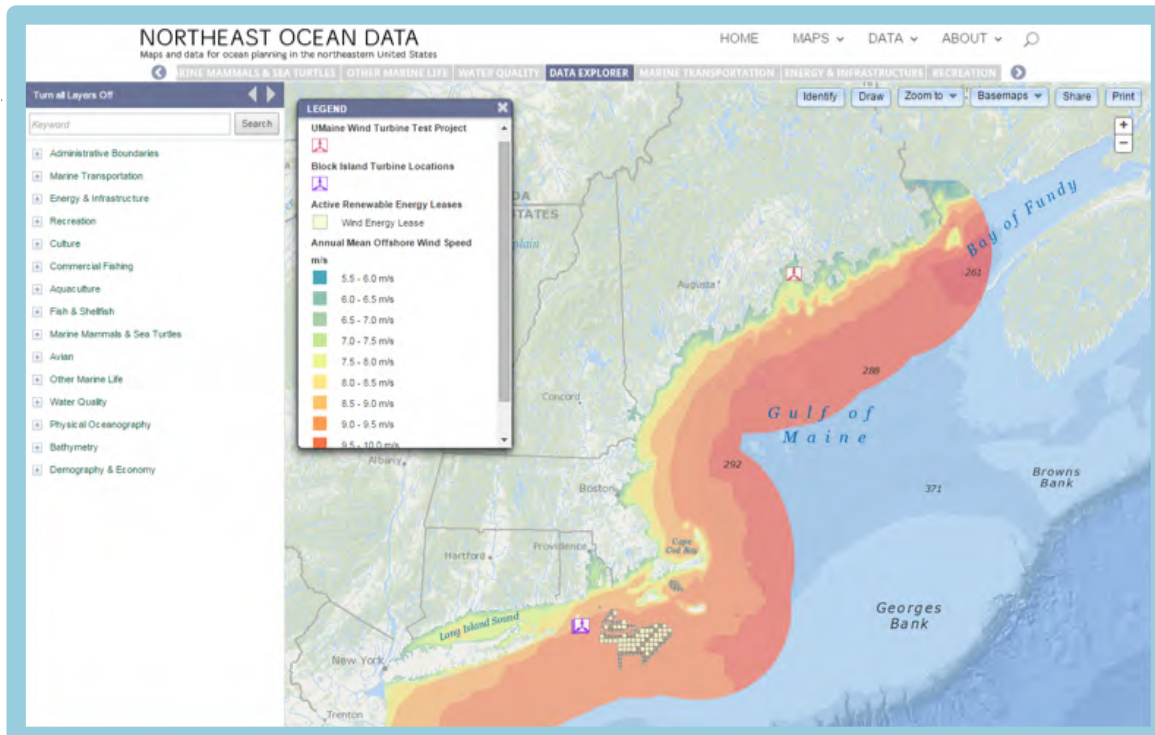
Lobster Trap End Line Density



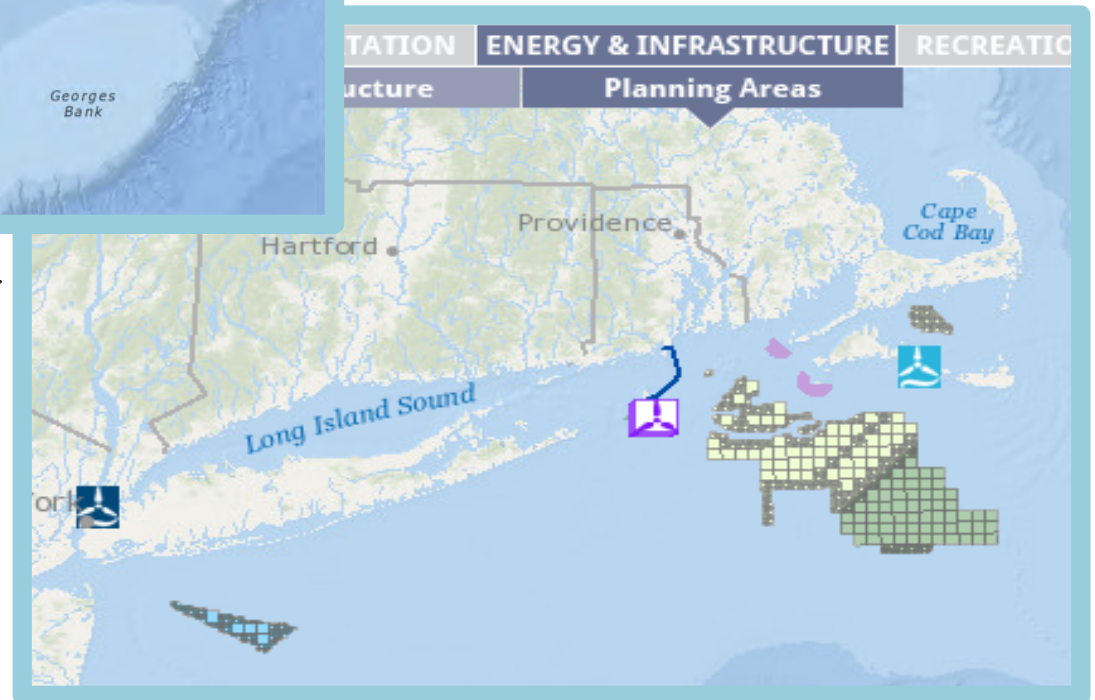


ENERGY & INFRASTRUCTURE





Wind resources in the Northeast U.S. from a 2010 DOE study.

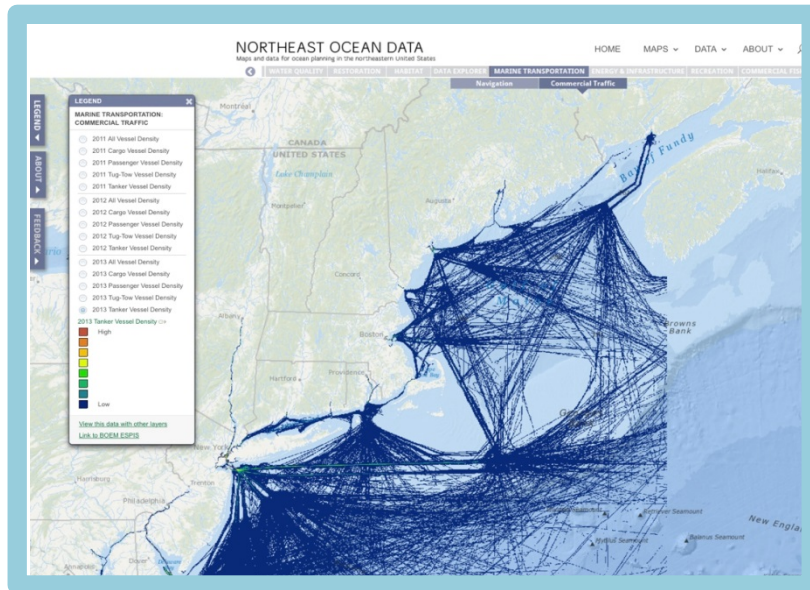


Renewable energy planning areas.

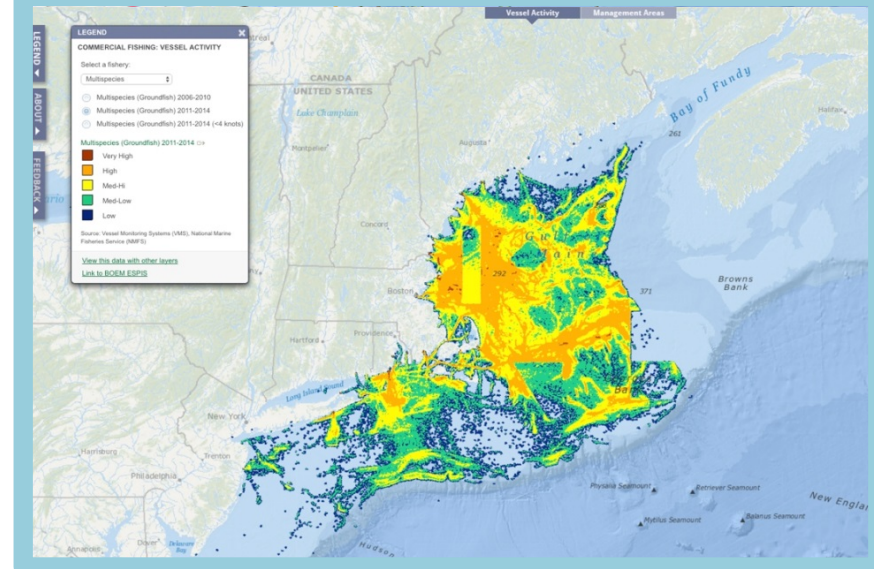
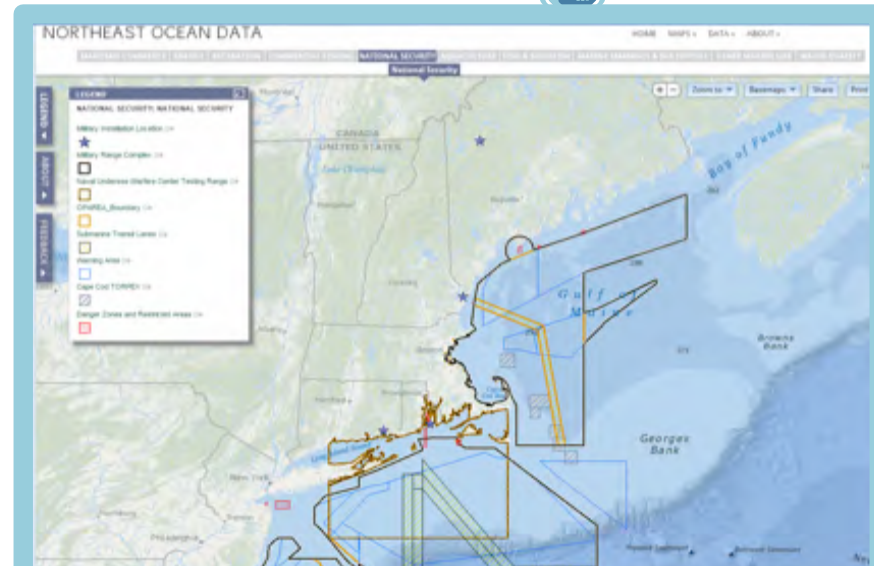


ENERGY & INFRASTRUCTURE

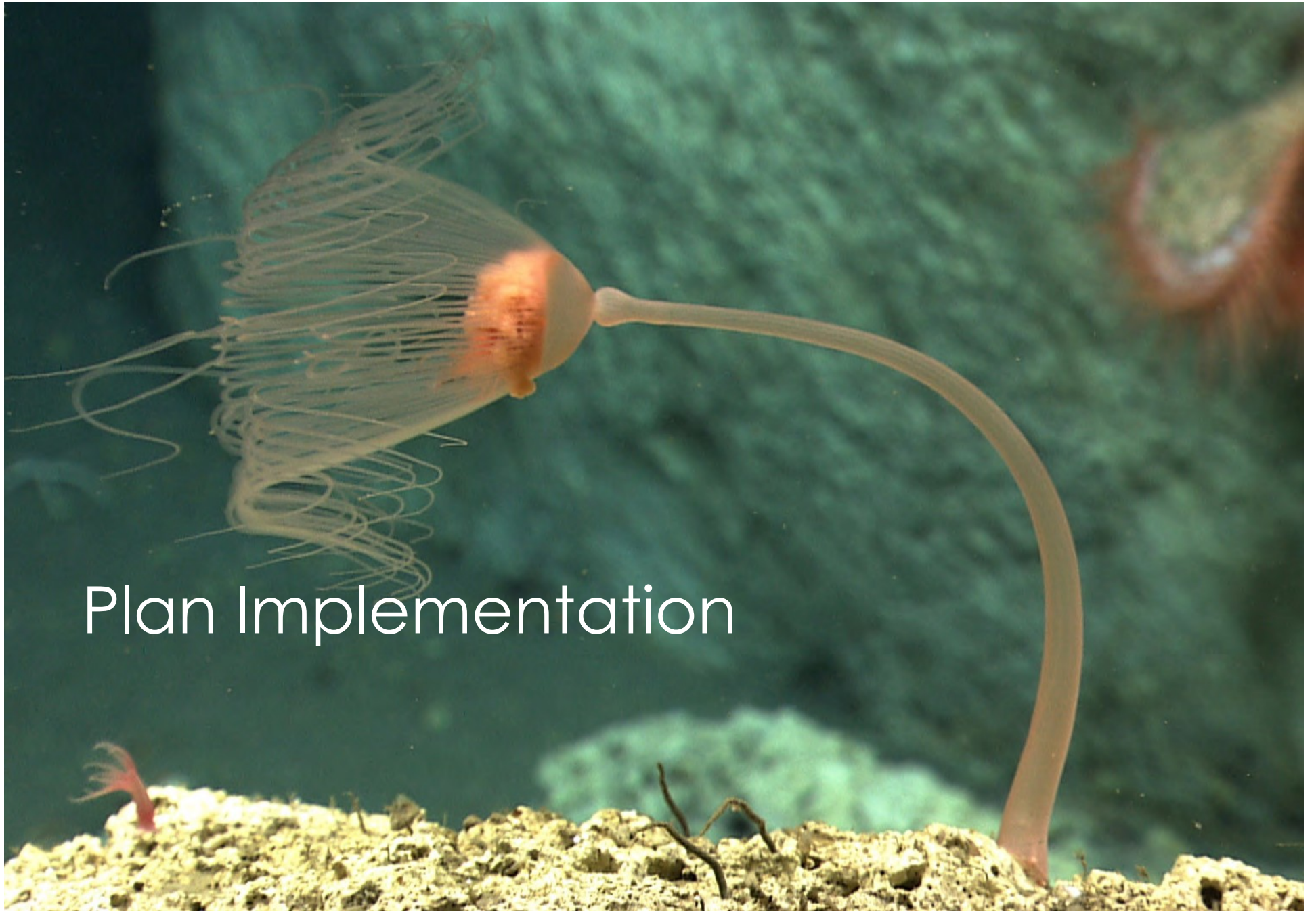
National Security Use Areas



Tanker Vessel Density



Multispecies Fishing Vessel Density



Plan Implementation

PLAN IMPLEMENTATION

1. Intergovernmental Coordination
2. Plan Administration
 - Portal Maintenance
3. Monitoring and Evaluation

PLAN IMPLEMENTATION

Best practices provide flexible but consistent guidance to help enhance value of agency coordination by supporting:

- Broad understanding across agencies of early use of relevant info from portal, plan, stakeholders, other sources,
- Clear and efficient direction for the applicant,
- Initial understanding of proposed project among and between agencies and initial broad understanding of issues,
- Informed stakeholders engagement,
- Coordinated federal, state, tribal review as appropriate.

Plan administration and oversight

- Data Portal

Monitoring and evaluation

EARLY AGENCY COORDINATION

Entities that participate in early agency coordination in the Northeast typically include (or should include) some combination of the following:

- DOI (including BOEM, USFWS, NPS, USGS)
- FERC
- USACE
- NOAA (including NMFS)
- USEPA
- DHS (including USCG and FEMA)
- Navy
- DOT (MARAD)
- NEFMC and Mid-Atlantic Fishery Management Council (depending on location)
- State agencies (permitting, wildlife, and fisheries agencies, CZM programs, SHPO). Fisheries agencies may also coordinate through NEFMC, MAFMC, or ASMFC.
- Atlantic States Marine Fisheries Commission
- Federally-recognized tribes

SCIENCE AND RESEARCH PRIORITIES

1. Improve understanding of marine life and habitats
2. Improve understanding of tribal cultural resources
3. Improve understanding of human activities, coastal communities, socioeconomics, and interactions between uses
4. Characterize the vulnerability of marine resources to specific stressors
5. Characterize changing environmental conditions, particularly resulting from climate change, and characterize resulting impacts to existing resources and uses
6. Advance ecosystem-based management (EBM) by building on the previous priorities and also including cumulative impacts and ecosystem services



What's next?

PUBLIC COMMENT

- Public comment period began May 25th and will conclude on July 25th at 5pm
- Public comment will be collected via:
 - Public listening sessions
 - Comments submitted online at neooceanplanning.org/plan
 - Via email: comment@neooceanplanning.org
- The RPB will submit revised plan to National Ocean Council for review and certification, at which point the plan will be in effect



Thank you

John Weber

jweber@northeastoceancouncil.org

617.875.1377

www.neoceanplanning.org