

# Current Pattern and Potential Changes in Fisheries Presentation to the Arctic MPA Workgroup – October 2015

**David Witherell**  
North Pacific Fishery Management Council

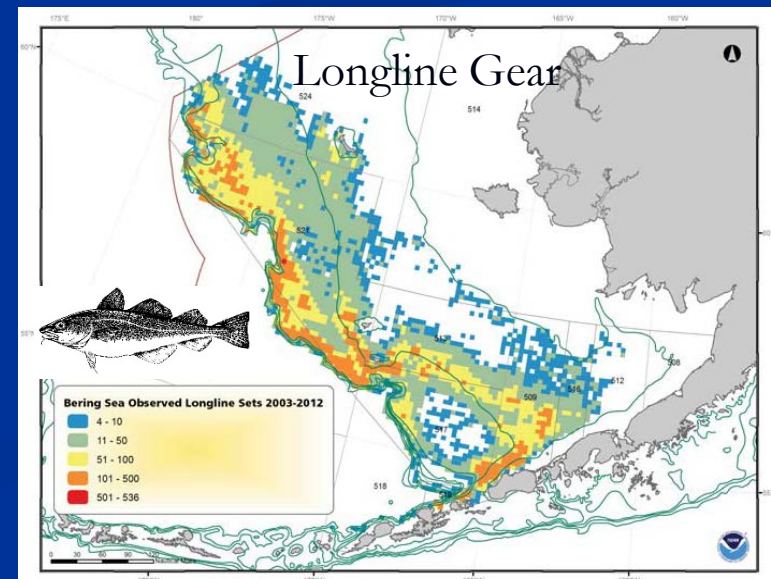
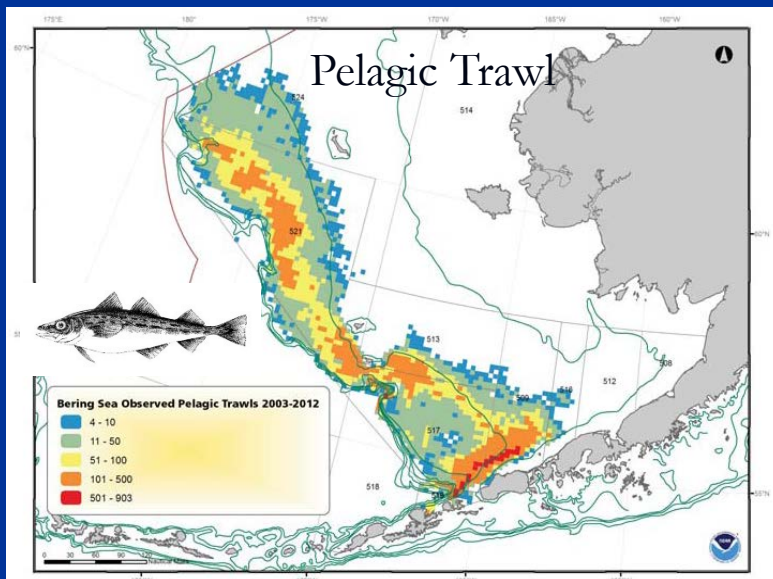
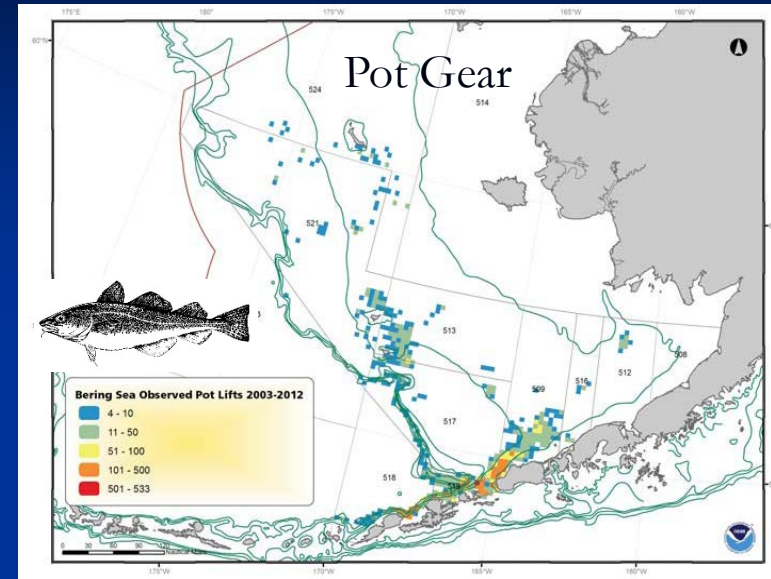
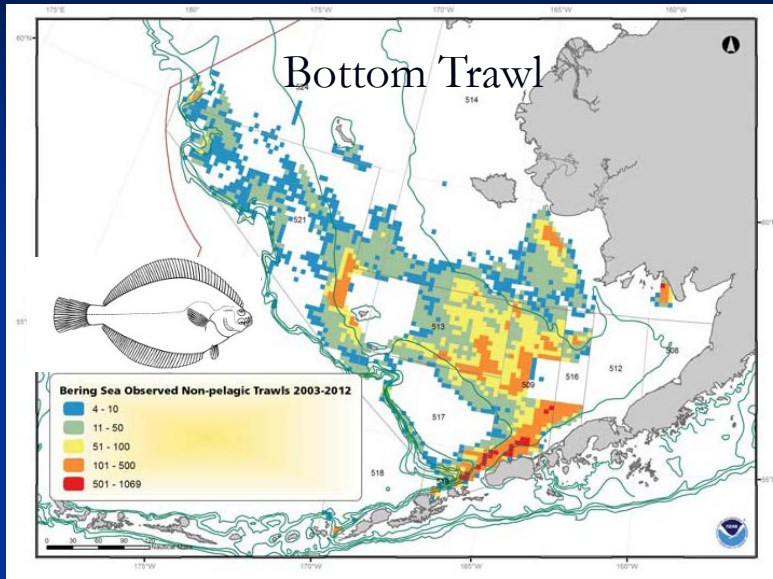
**Chris Siddon**  
Alaska Department of Fish and Game



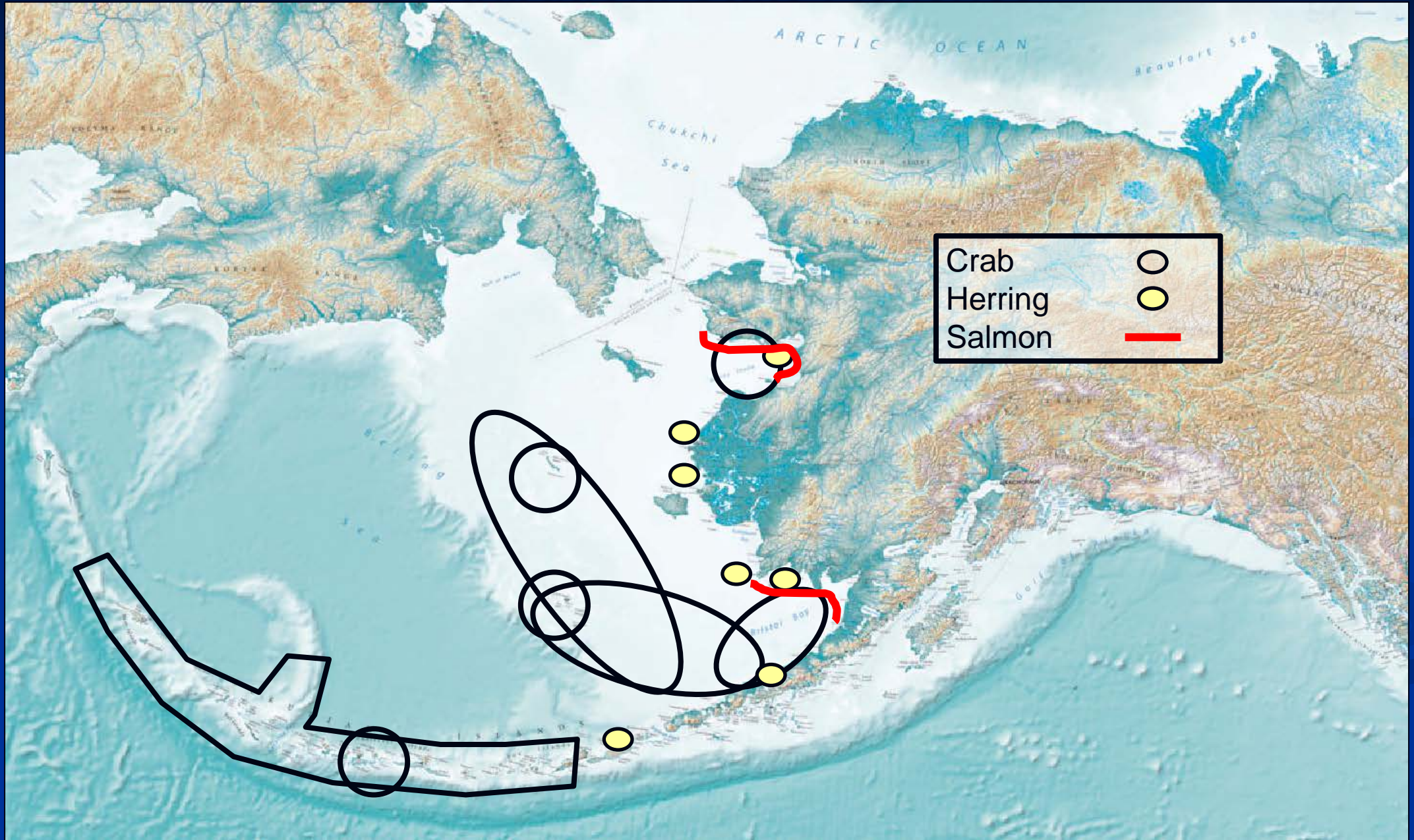
# Who Manages What Fisheries off Alaska?

	<b>North Pacific Fishery Management Council</b>	<b>National Marine Fisheries Service</b>	<b>Alaska Board of Fisheries/ Alaska Dept. Fish &amp; Game</b>	<b>International Pacific Halibut Commission</b>
<b>Groundfish</b> (pollock, cod, flatfish, etc.)	Allocation & conservation	Implements Federal regulations	Some state fisheries (0-3)	
<b>Crabs</b> (king, snow, Tanner crabs)	Bering Sea fisheries – joint management	Bering Sea fisheries - regulations	State & Jointly managed fisheries	
<b>Scallops</b>	License limits	License regulations	Fishery mgmt.	
<b>Halibut</b>	Allocation	Allocation regulations		Conservation
<b>Herring</b>			Fishery mgmt.	
<b>Salmon</b>			Fishery mgmt.	
<b>Others</b> (shrimp, urchins, etc.)			Fishery mgmt.	

# Effort Distribution: Bering Sea Groundfish Fisheries

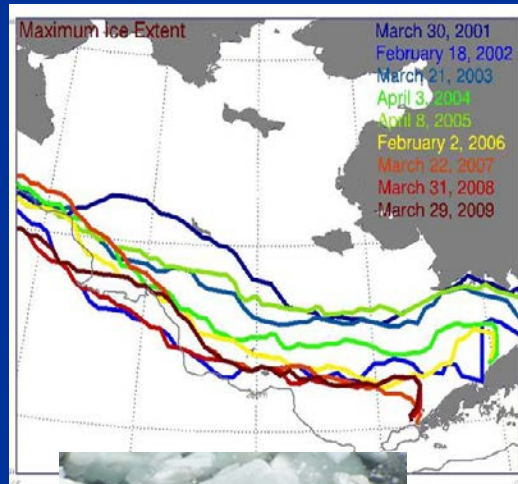


# Distribution: State Fisheries

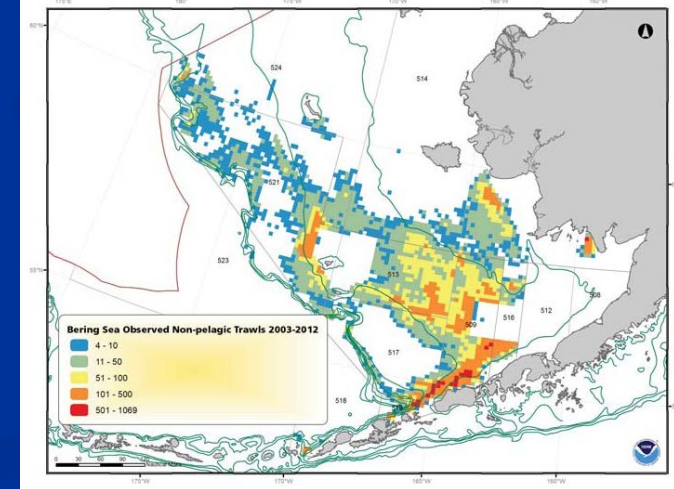
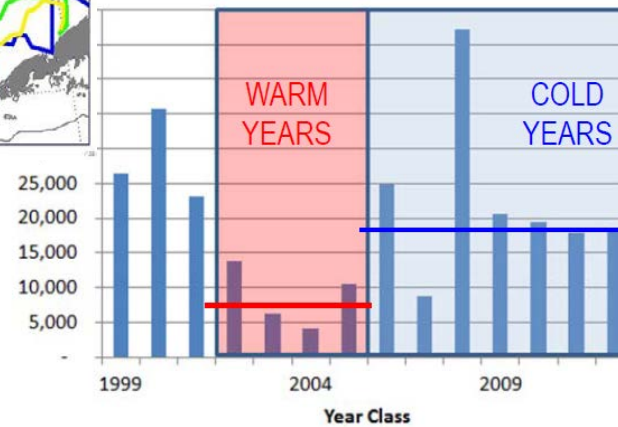


# Predicted Future Changes

- An earlier ice retreat may increase trawl fishing intensity northward, as limited by closure areas and fish distribution.
- Reduced ice cover and associated primary productivity is also expected to negatively impact pollock abundance.

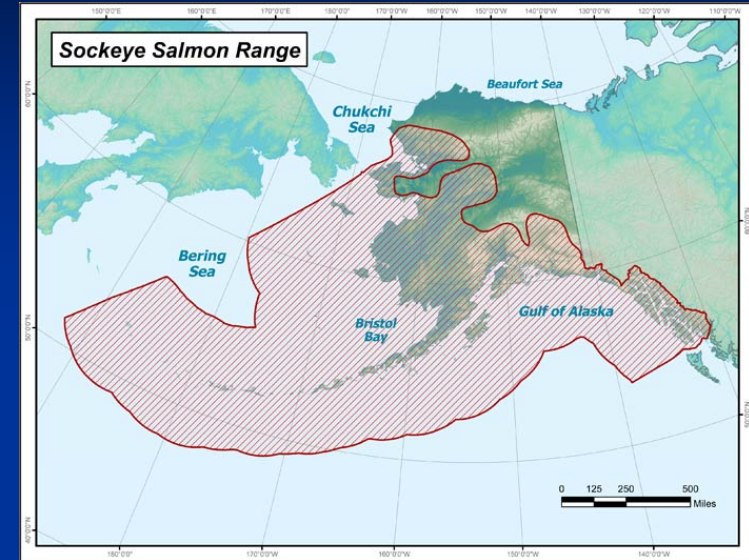


Age-1 number (millions)



# Predicted Future Changes

- Distributions of all species likely to shift
  - (all 5 salmon spp. documented around Mackenzie R.)
- Timing of spawning likely to change
  - (eg., BB sockeye run timing)
- Reduced settlement and recruitment success
  - (eg., BB RKC)



## **“Bristol Bay sockeye make unusual late rally”**

By: DJ Summers, Alaska Journal of Commerce

“The historical midpoint of July 4 came and went with only 8.87 million fish harvested, less than half of what was caught by this time last year, and 35 percent less than the five-year average.”