

# Marine Protected Areas: State of Alaska

Unofficial

Chris Siddon, ADFG

# Marine Protected Areas: State of Alaska

14 Areas North of the Peninsula  
(lots more in GOA)

Three top reasons:

Restrict bottom contact fishing gear

Crab fishing closures

Provide non-commercial fishing opportunity

Approx. 44,448 nm<sup>2</sup> (115,000 km<sup>2</sup>)

Most areas in Arctic are managed by NMFS

## REGION IV: WESTWARD ALASKA; BERING SEA

### TYPE OF MMA

Marine Fishery Reserve

### PURPOSE

To protect essential fish habitat.

### MANAGING AGENCY

ADF&G Commercial Fisheries

### DATE CREATED

08/08/2007

### \*LEGAL REFERENCE

5 AAC 39.167 (3)  
50 C.F.R. 679.22 (15) \*see Appendix A for detail

### RESTRICTED ACTIVITIES

Closed to non-pelagic trawl, scallop dredge, and dinglebar troll gear.\*

### SPECIES AFFECTED

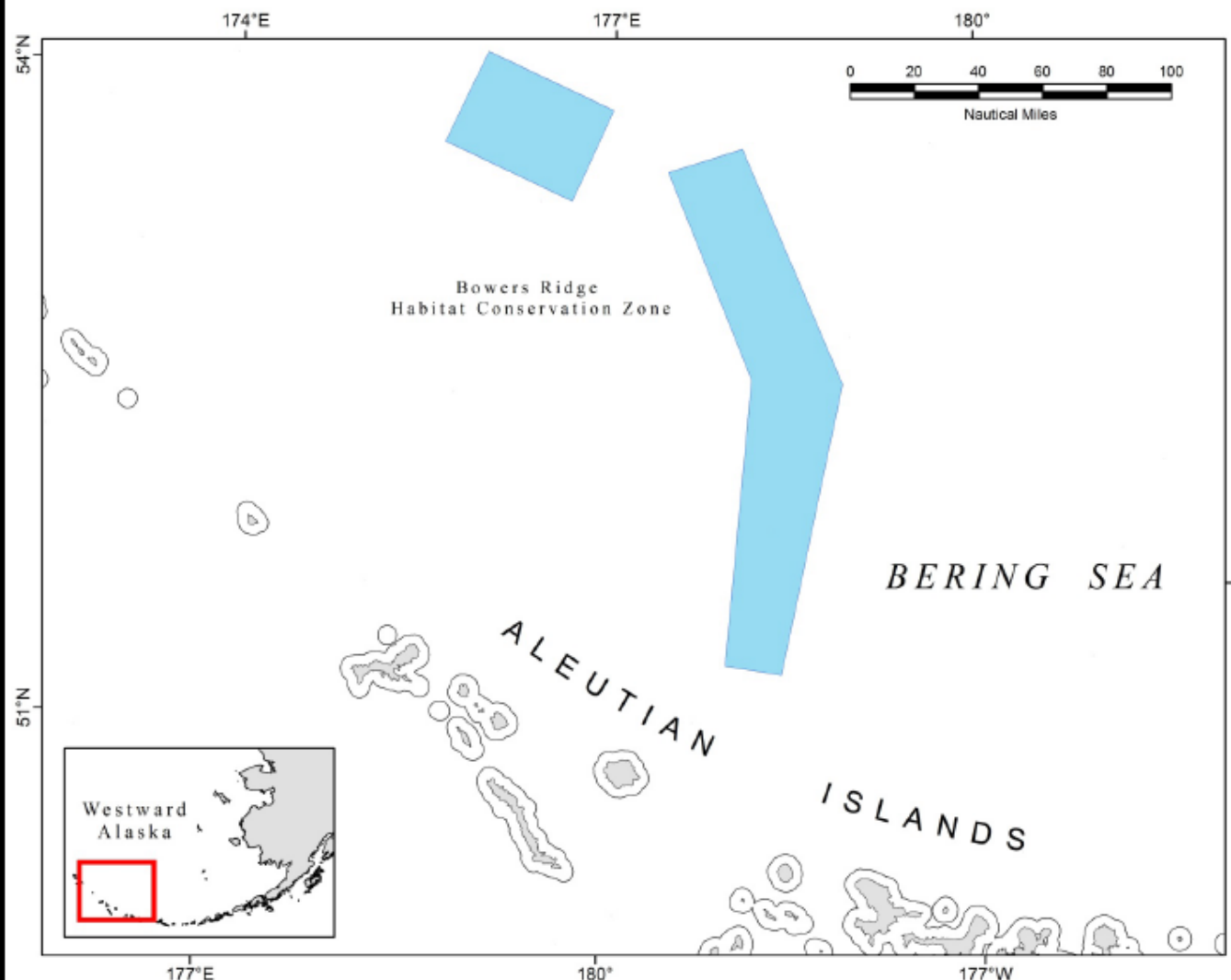
Groundfish

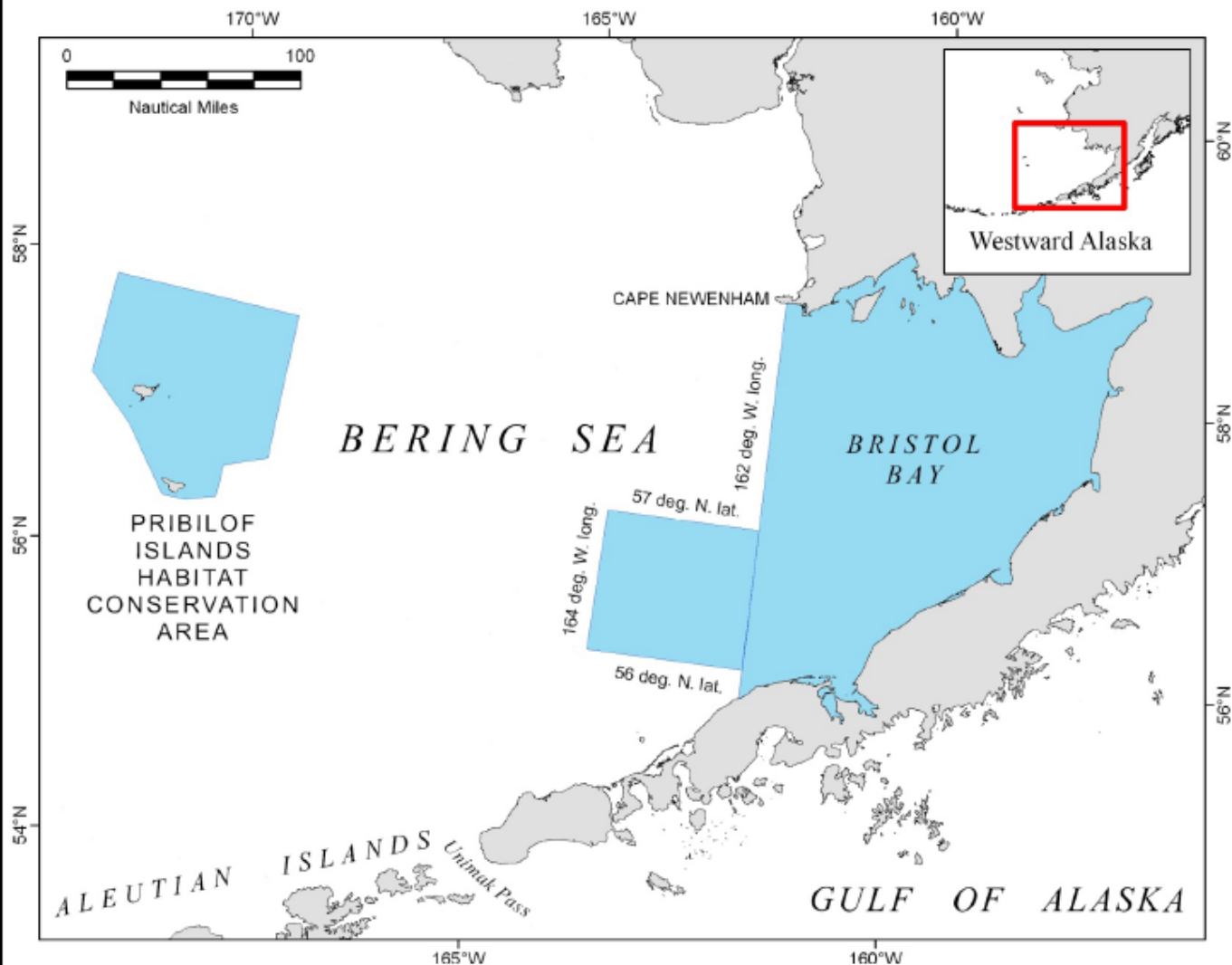
### NOTES

\*During state managed fisheries.

AREA (approx.): 5,279 sq. nmi

### Bowers Ridge Habitat Conservation Zone



**REGION IV:****WESTWARD ALASKA; BERING SEA****Scallop Closed Areas - Pribilof I. HCA & E. Bering Sea****TYPE OF MMA**

Marine Fishery Reserve

**PURPOSE**

To conserve weathervane scallops.

**MANAGING AGENCY**

ADF&amp;G Commercial Fisheries

**DATE CREATED**

In effect before 1981

**\*LEGAL REFERENCE**5 AAC 38.425 (14) (15)  
\*see Appendix A for detail**RESTRICTED ACTIVITIES**

Scallop dredging is prohibited.

**SPECIES AFFECTED**

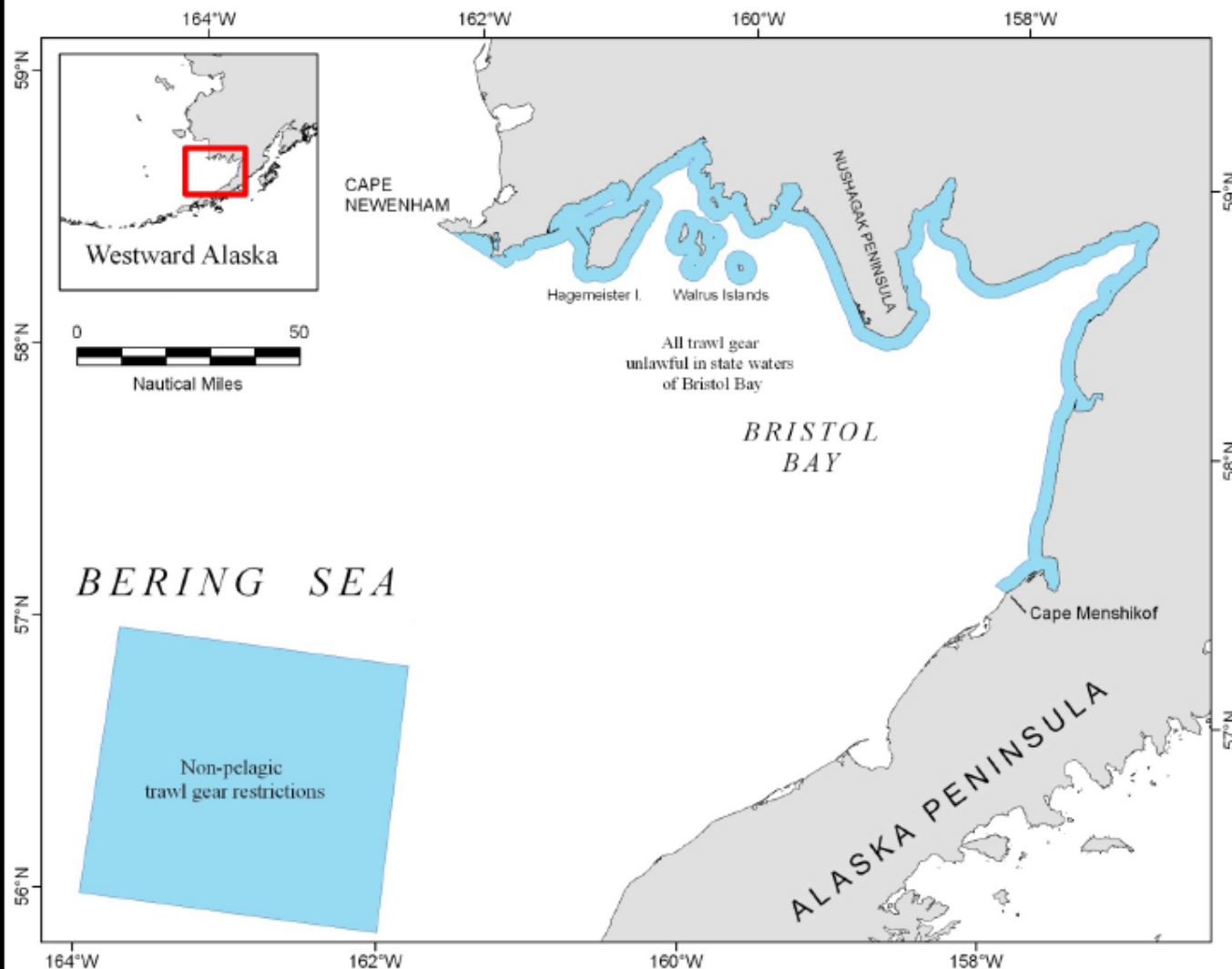
Scallops

**NOTES**

AREA (approx.): 28,905 sq. nmi

## REGION IV: WESTWARD ALASKA; BERING SEA

### Trawl Gear Restrictions – Bristol Bay



#### TYPE OF MMA

Marine Fishery Reserve

#### PURPOSE

To protect king crab and their habitats.

#### MANAGING AGENCY

ADF&G Commercial Fisheries

#### DATE CREATED

Before 1985 ??

#### \*LEGAL REFERENCE

5 AAC 39.164 (b) (6) & 5 AAC 39.165 (3)  
\*see Appendix A for detail

#### RESTRICTED ACTIVITIES

Commercial fishing with trawl gear is restricted or prohibited.

#### SPECIES AFFECTED

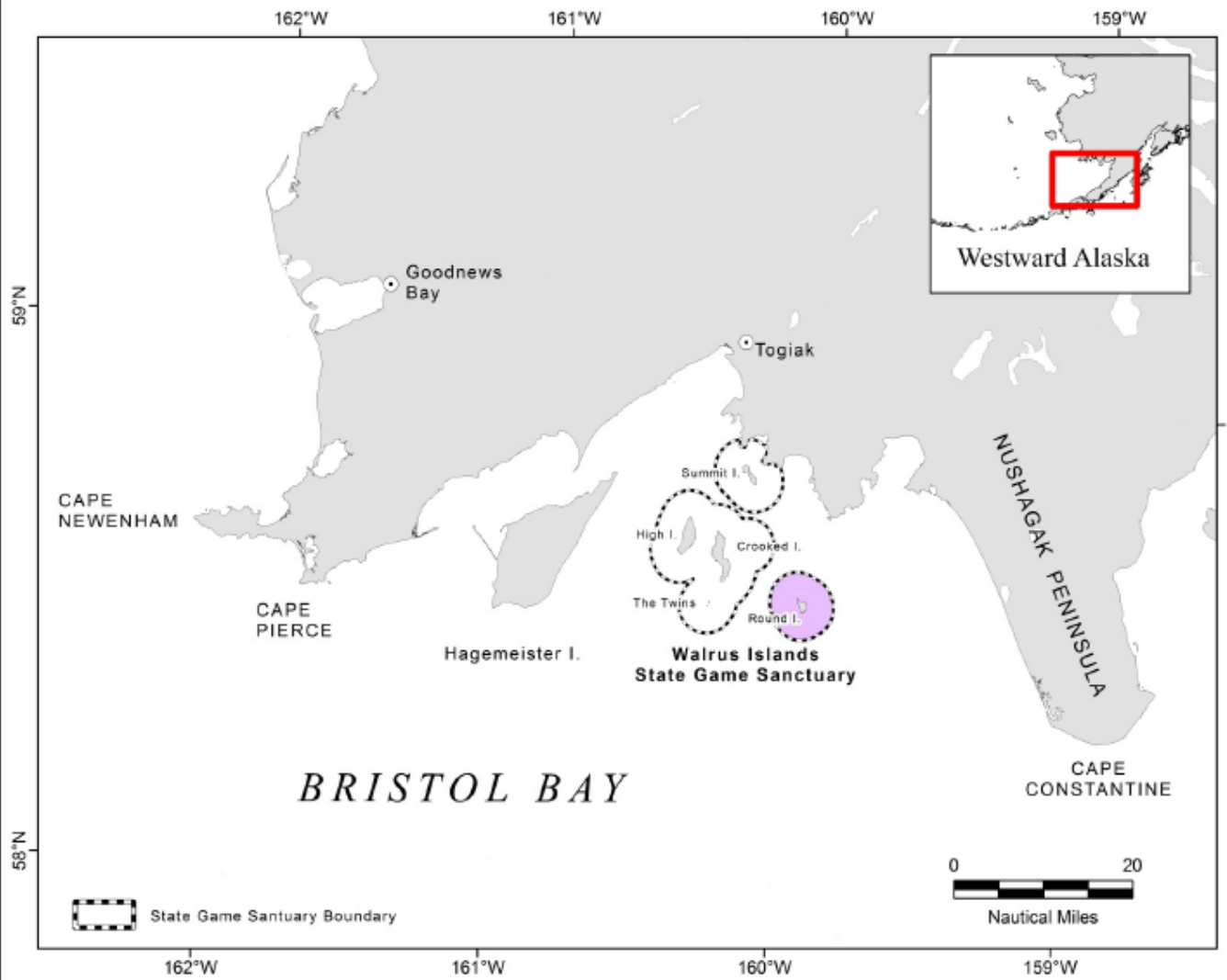
Groundfish

#### NOTES

AREA (approx.): 1,518 sq. nmi

**REGION IV: WESTWARD ALASKA; BERING SEA**

Walrus protection areas [Round Island 3 nmi no-transit]



**TYPE OF MMA**

Walrus Islands State Game Sanctuary

**PURPOSE**

To protect walrus and their habitats.

**MANAGING AGENCY**

ADF&G Division of Wildlife Conservation

**DATE CREATED**

8/20/1989 (3 nmi buffer; Register 111)

**\*LEGAL REFERENCE**

5 AAC 92.066 & AS 16.20.090 – 98  
\*see Appendix A for detail

**RESTRICTED ACTIVITIES**

All access to Round Isl. and state waters within 3 nmi allowed only by permit\*

**SPECIES AFFECTED**

Groundfish

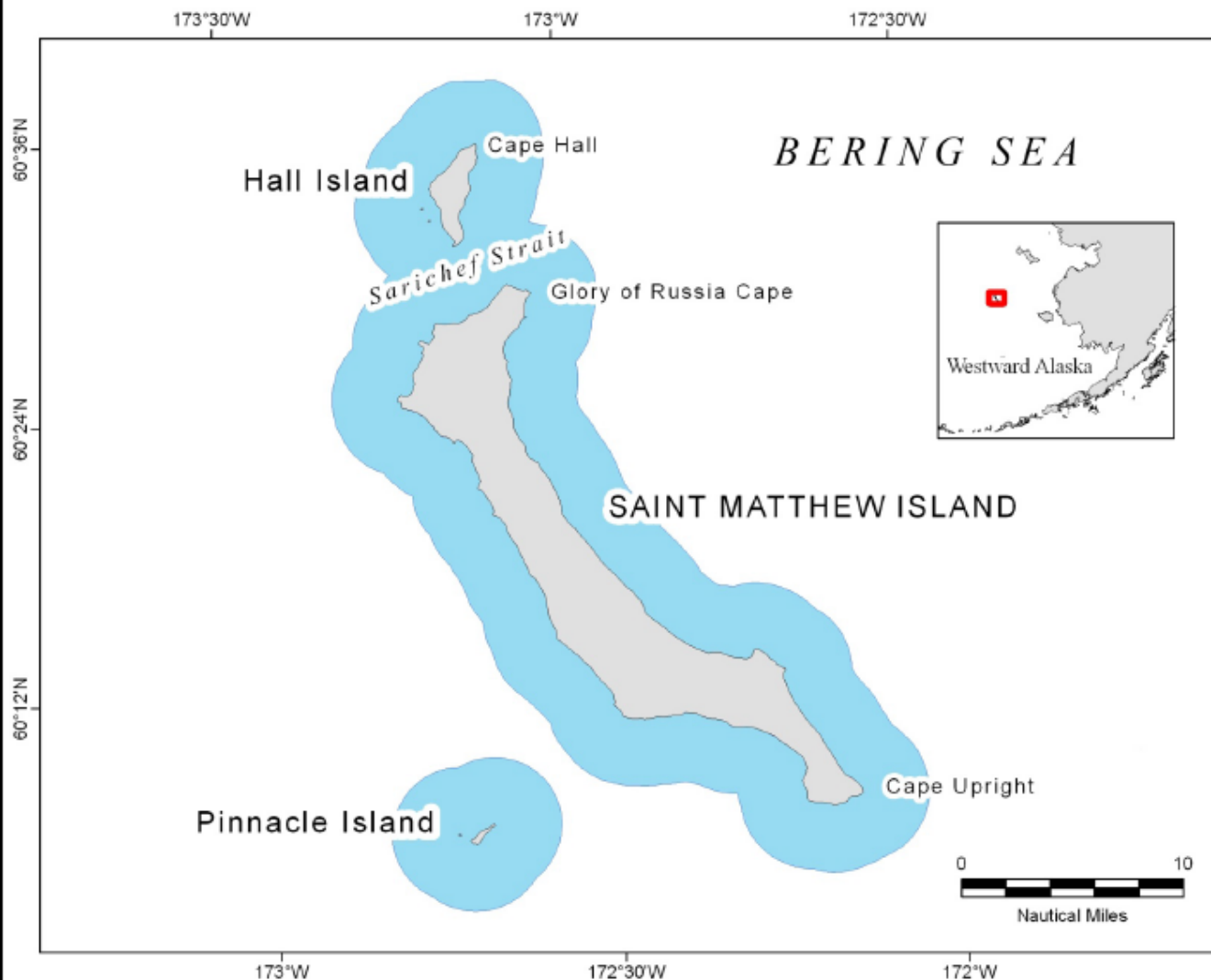
**NOTES**

\*Effectively a year-round fishing closure

**AREA (approx.): 41 sq. nmi (Round Is)**

## REGION IV: WESTWARD ALASKA; BERING SEA

### Groundfish Closed Waters – St. Matthew, Hall, & Pinnacle Islands



#### TYPE OF MMA

Marine Fishery Reserve

#### PURPOSE

To protect female and juvenile blue king crab and their habitats.

#### MANAGING AGENCY

ADF&G Commercial Fisheries

#### DATE CREATED

05/19/2001

#### \*LEGAL REFERENCE

5 AAC 28.650 (a) \*see Appendix A for detail

#### RESTRICTED ACTIVITIES

Closed to all commercial groundfish fishing.

#### SPECIES AFFECTED

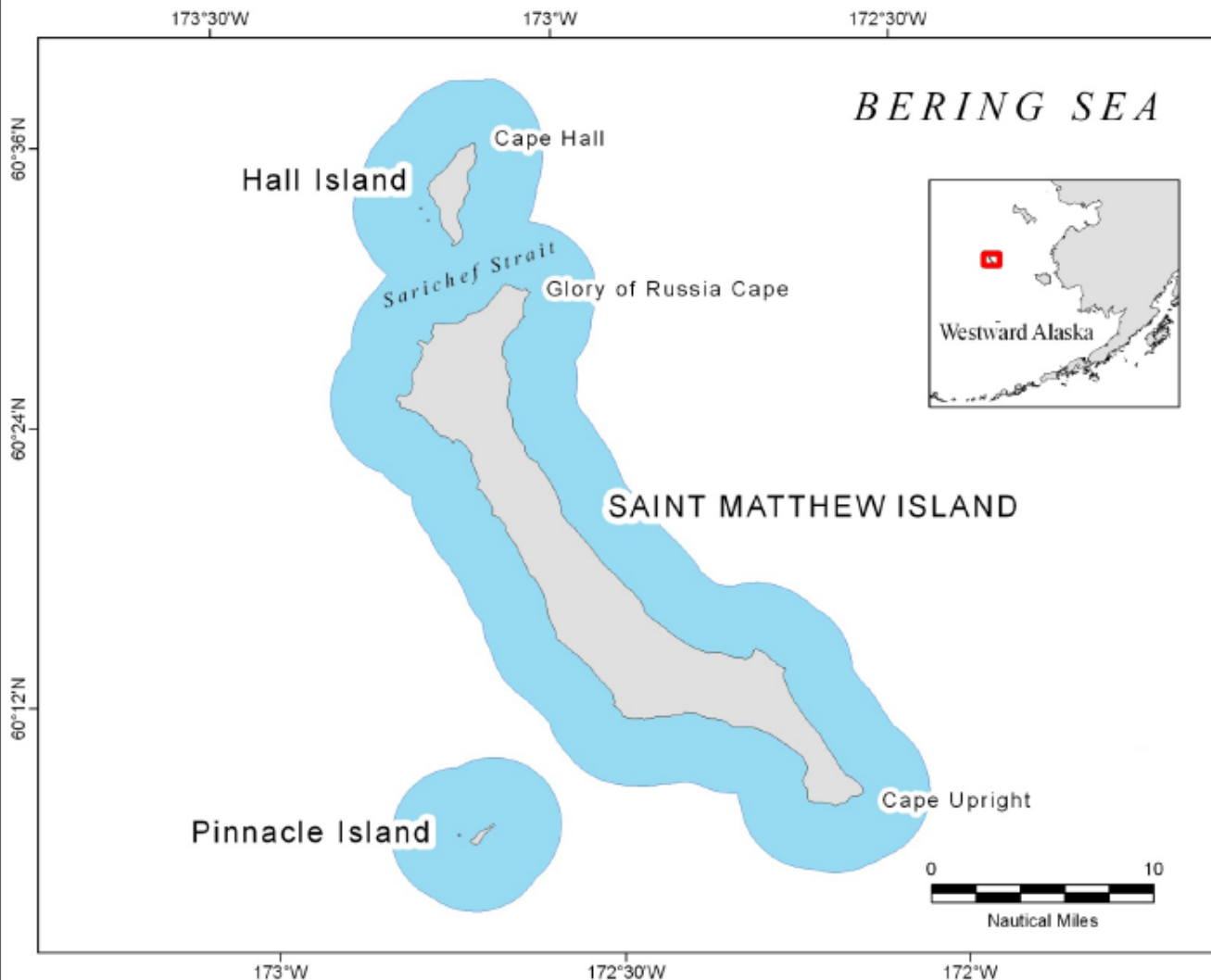
Groundfish

#### NOTES

AREA (approx.): 331 sq. nmi

## REGION IV: WESTWARD ALASKA; BERING SEA

### King Crab Closed Areas – St. Matthew, Hall, and Pinnacle Islands



#### TYPE OF MMA

Marine Fishery Reserve

#### PURPOSE

To conserve blue king crab and their habitats.

#### MANAGING AGENCY

ADF&G Commercial Fisheries

#### DATE CREATED

06/28/1981

#### \*LEGAL REFERENCE

5 AAC 34.935 (d)  
\*see Appendix A for detail

#### RESTRICTED ACTIVITIES

No commercial crab fishing is allowed.

#### SPECIES AFFECTED

Blue king crab

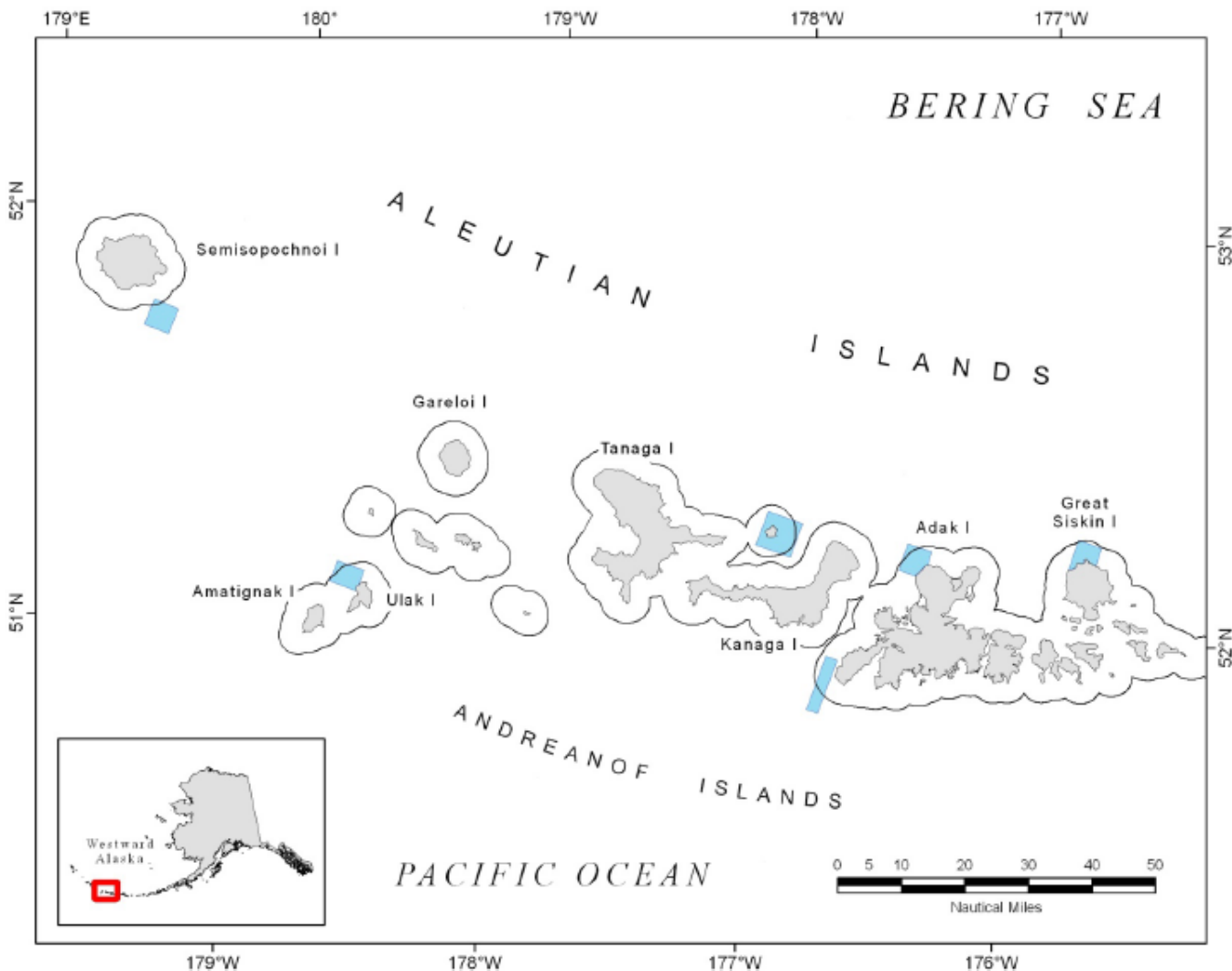
#### NOTES

AREA (approx.): 331 sq. nmi



## REGION IV: WESTWARD ALASKA; ALEUTIAN ISLANDS

### Aleutian Islands Coral and Sponge Habitat Protection Areas



#### TYPE OF MMA

Marine Fishery Reserve

#### PURPOSE

To protect essential fish habitat.

#### MANAGING AGENCY

ADF&G Commercial Fisheries

#### DATE CREATED

08/08/2007

#### \*LEGAL REFERENCE

5 AAC 39.167 (1)  
50 C.F.R. 679.22 (13) \*see Appendix A for detail

#### RESTRICTED ACTIVITIES

Closed to all bottom-tending fishing gear.\*

#### SPECIES AFFECTED

All species & assemblages

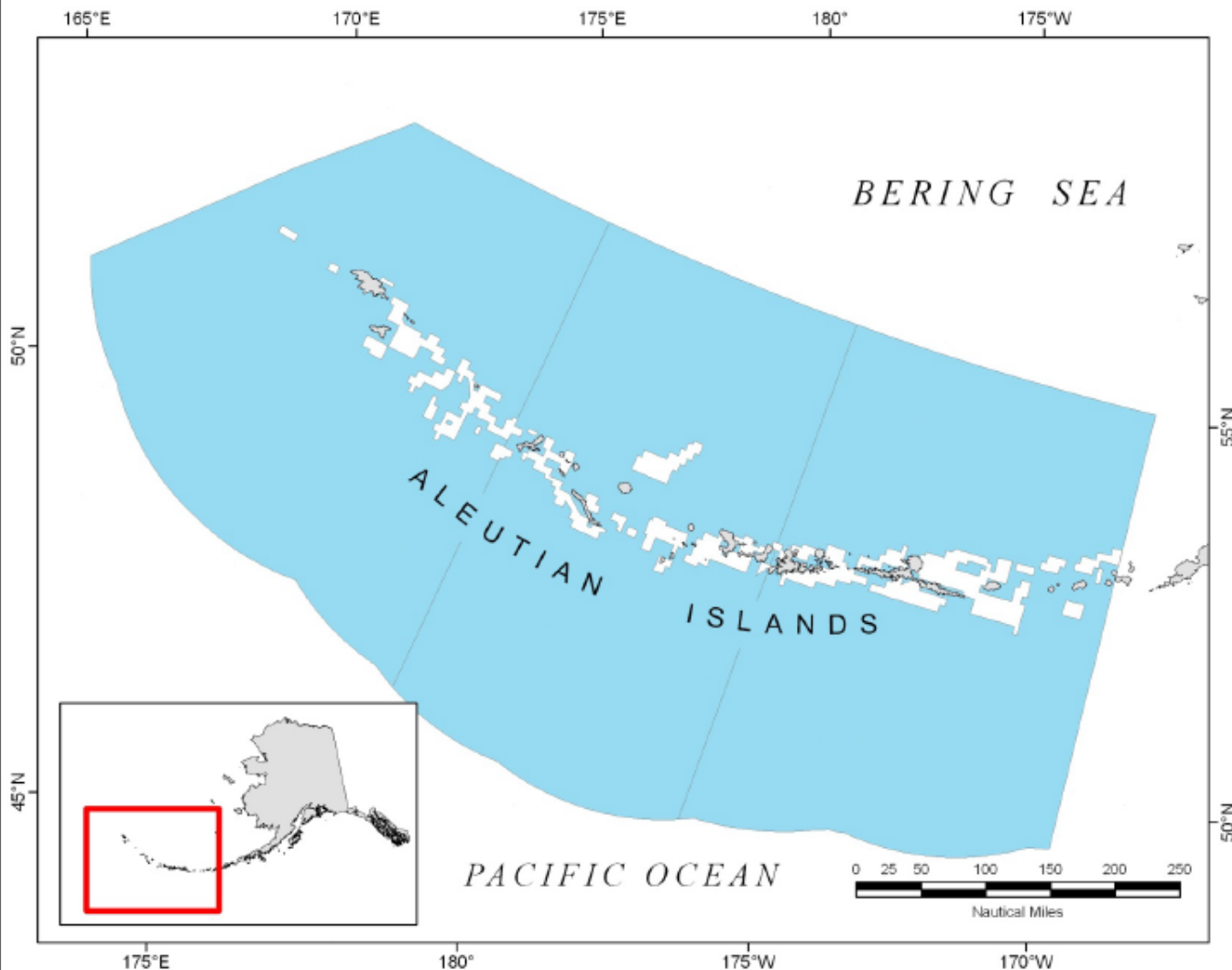
#### NOTES

\*During state managed fisheries.

AREA (approx.): 110 sq. nmi

## REGION IV: WESTWARD ALASKA; ALEUTIAN ISLANDS

### Aleutian Islands Habitat Conservation Area



#### TYPE OF MMA

Marine Fishery Reserve

#### PURPOSE

To protect essential fish habitat.

#### MANAGING AGENCY

ADF&G Commercial Fisheries

#### DATE CREATED

08/08/2007

#### \*LEGAL REFERENCE

5 AAC 39.167 (2)  
50 C.F.R. 679.22 (14) \*see Appendix A for detail

#### RESTRICTED ACTIVITIES

Closed to non-pelagic trawl gear.\*

#### SPECIES AFFECTED

Groundfish

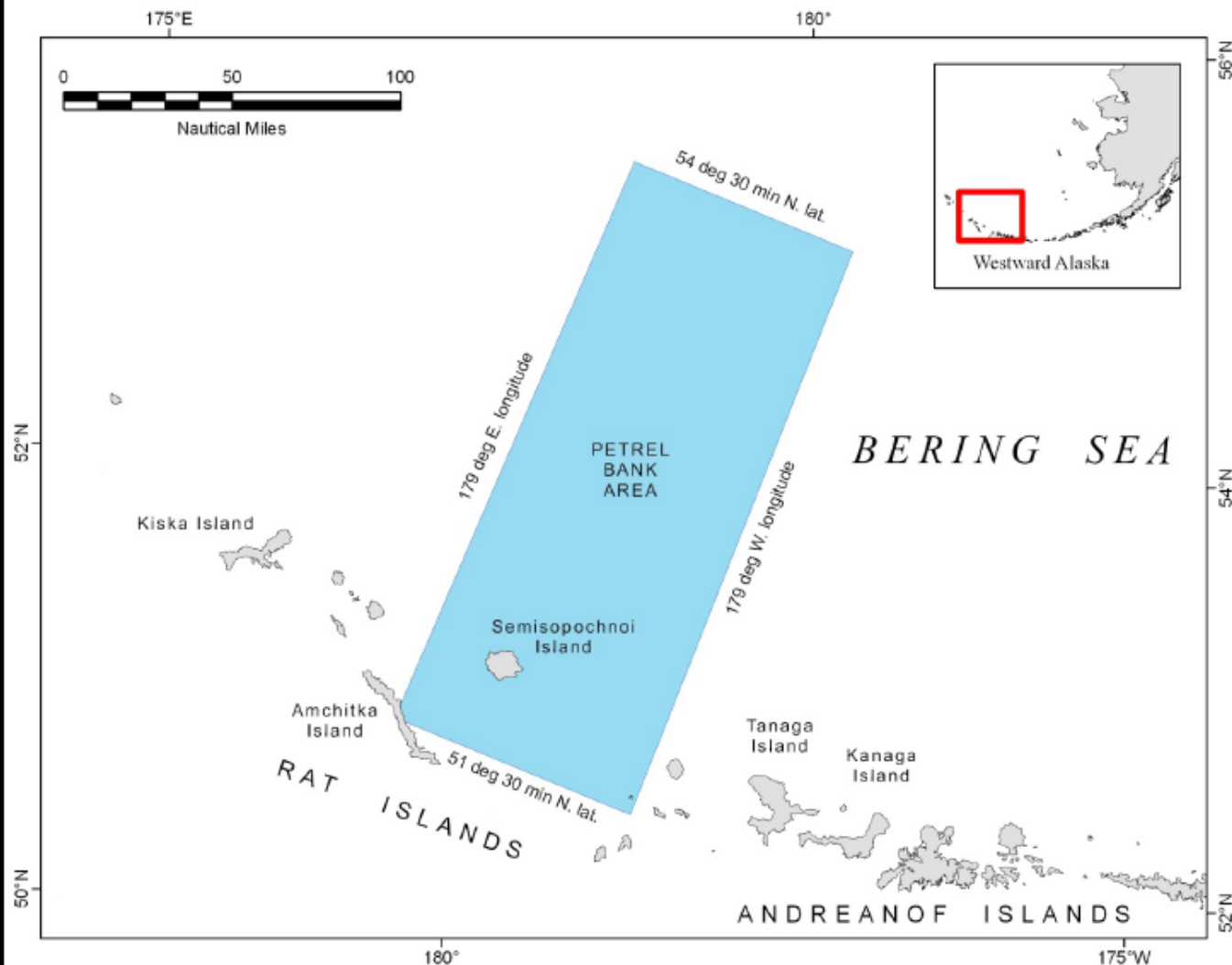
#### NOTES

\*During state managed fisheries.

AREA (approx.): 279,096 sq. nmi

## REGION IV: WESTWARD ALASKA; BERING SEA / ALEUTIAN ISLS

### Scallop Closed Areas – Petrel Bank



### TYPE OF MMA

Marine Fishery Reserve

### PURPOSE

To conserve weathervane scallops.

### MANAGING AGENCY

ADF&G Commercial Fisheries

### DATE CREATED

06/28/1981

### \*LEGAL REFERENCE

5 AAC 38.425 (16)

\*see Appendix A for detail

### RESTRICTED ACTIVITIES

No scallop dredging is allowed.

### SPECIES AFFECTED

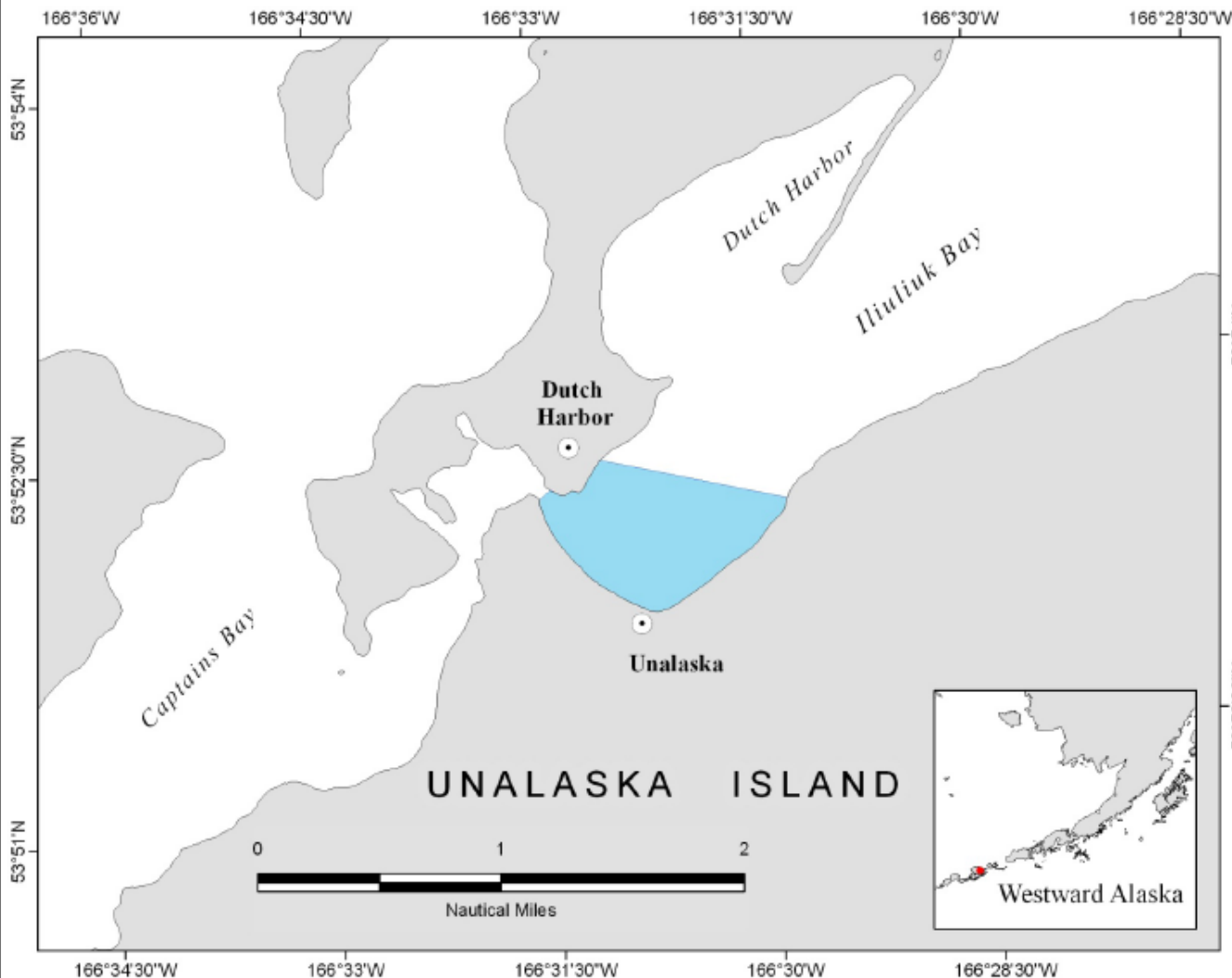
Weathervane scallops

### NOTES

AREA (approx.): 727 sq. nmi

## REGION IV: WESTWARD ALASKA; ALEUTIAN ISLANDS

### Dungeness Crab Commercial Fishery Closure – Iliuliuk Bay



#### TYPE OF MMA

Marine Fishery Reserve

#### PURPOSE

To provide for non-commercial harvest opportunities.

#### MANAGING AGENCY

ADF&G Commercial Fisheries

#### DATE CREATED

07/12/1986

#### \*LEGAL REFERENCE

5 AAC 32.450

\*see Appendix A for detail

#### RESTRICTED ACTIVITIES

Closed to commercial harvest of Dungeness crab

#### SPECIES AFFECTED

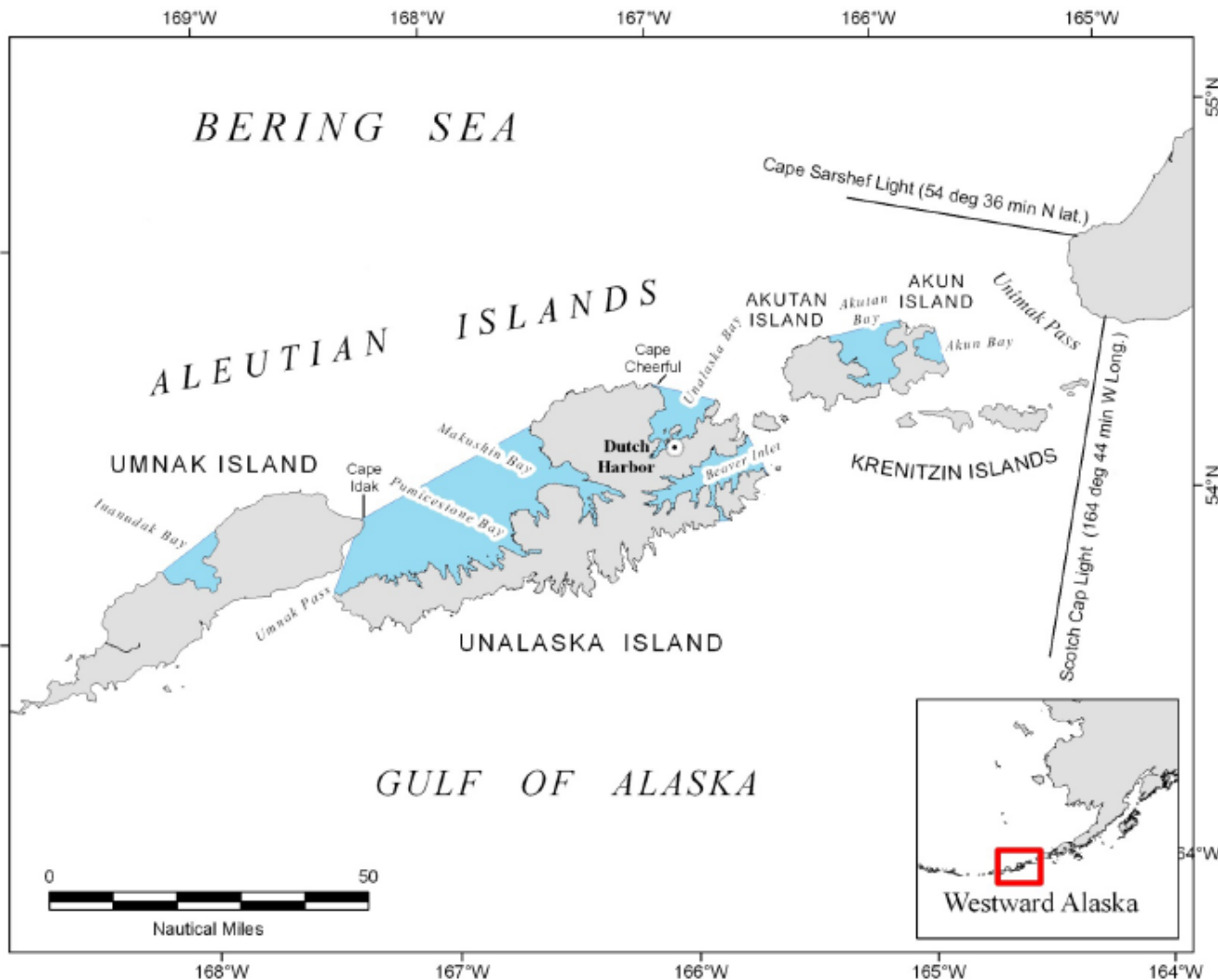
Dungeness crab

#### NOTES

AREA (approx.): 0.38 sq. nmi

## REGION IV: WESTWARD ALASKA; ALEUTIAN ISLANDS

### Non-Pelagic Trawl Gear Restriction Area – Eastern Aleutian Islands



#### TYPE OF MMA

Marine Fishery Reserve

#### PURPOSE

To protect red king and Tanner crabs, and their habitats.

#### MANAGING AGENCY

ADF&G Commercial Fisheries

#### DATE CREATED

07/12/1986

#### \*LEGAL REFERENCE

5 AAC 39.164 (b) (4) (A-F)

\*see Appendix A for detail

#### RESTRICTED ACTIVITIES

Non-pelagic trawl gear may not be operated in these waters.

#### SPECIES AFFECTED

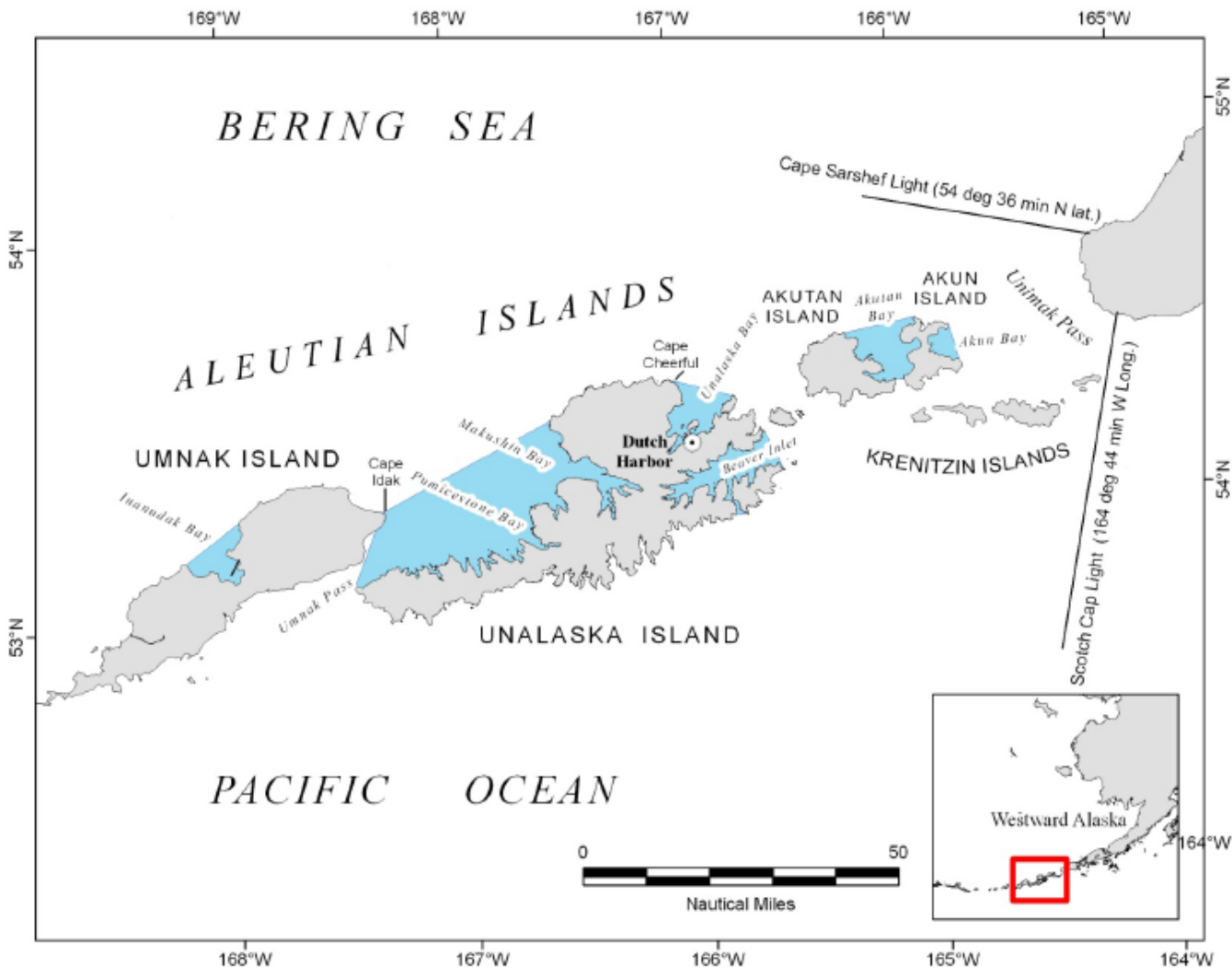
Groundfish

#### NOTES

AREA (approx.): 727 sq. nmi

## REGION IV: WESTWARD ALASKA; ALEUTIAN ISLANDS

### Scallop Closed Areas – Eastern Aleutian Islands



#### TYPE OF MMA

Marine Fishery Reserve

#### PURPOSE

To conserve weathervane scallops.

#### MANAGING AGENCY

ADF&G Commercial Fisheries

#### DATE CREATED

06/28/1981

#### \*LEGAL REFERENCE

5 AAC 38.425 (7-13)

\*see Appendix A for detail

#### RESTRICTED ACTIVITIES

No scallop dredging is allowed.

#### SPECIES AFFECTED

Weathervane scallops

#### NOTES

AREA (approx.): 727 sq. nmi

## REGION III: ARCTIC ALASKA; NORTHERN BERING SEA

### King Crab Closed Areas – St. Lawrence, King, and Little Diomede Islands



#### TYPE OF MMA

Marine Fishery Reserve

#### PURPOSE

To provide subsistence harvest opportunities.

#### MANAGING AGENCY

ADF&G Commercial Fisheries

#### DATE CREATED

06/28/1981

#### \*LEGAL REFERENCE

5 AAC 34.935 (b) \*see Appendix A for detail

#### RESTRICTED ACTIVITIES

No commercial king crab fishing is allowed.

#### SPECIES AFFECTED

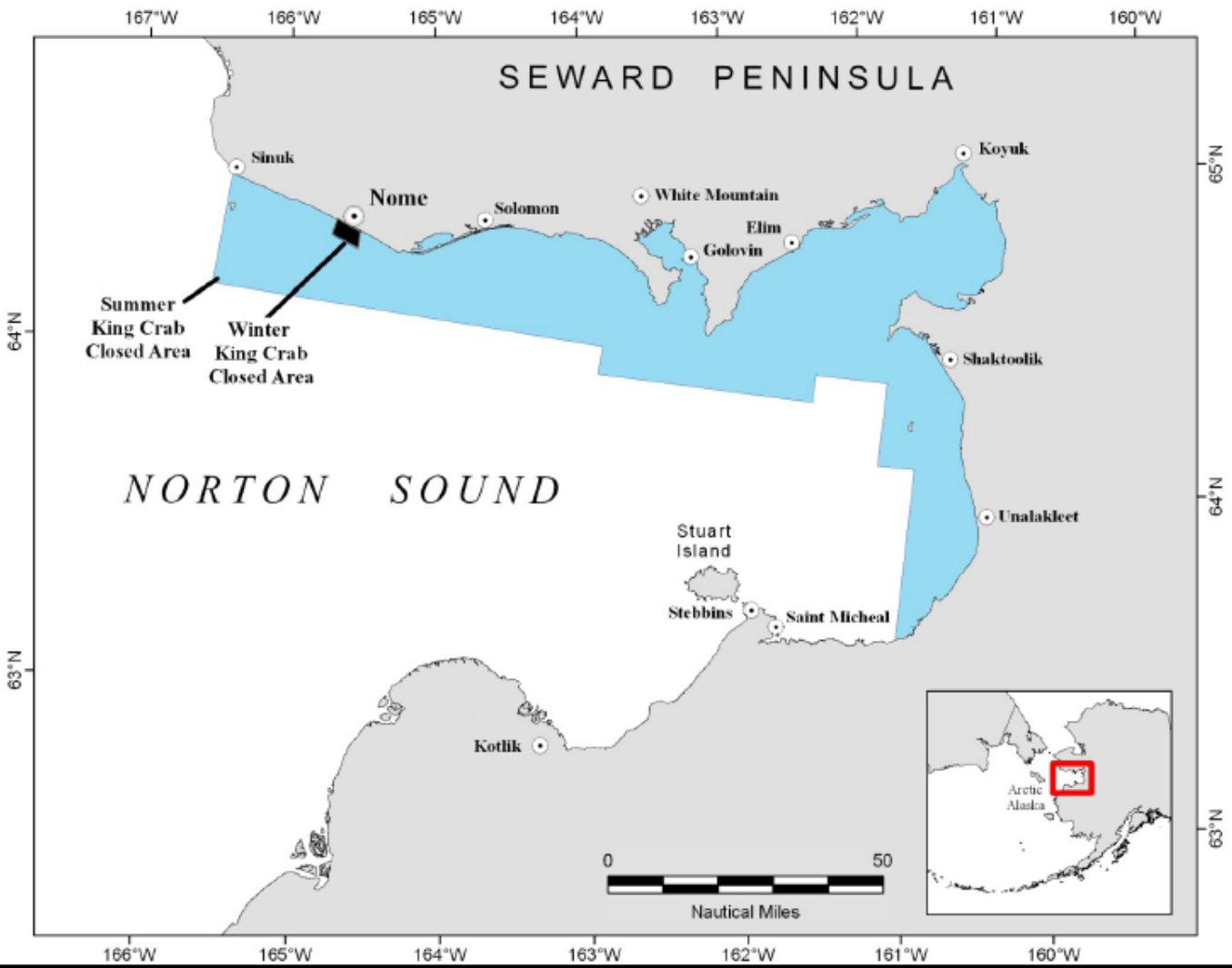
King crab

#### NOTES

AREA (approx.): 3,407 sq. nmi

**REGION III: ARCTIC ALASKA; NORTON SOUND**

**King Crab Closed Areas – Norton Sound**



**TYPE OF MMA**

Marine Fishery Reserve

**PURPOSE**

To provide subsistence harvest opportunities.

**MANAGING AGENCY**

ADF&G Commercial Fisheries

**DATE CREATED**

06/28/1981

**\*LEGAL REFERENCE**

5 AAC 34.935 (a) (c)  
\*see Appendix A for detail

**RESTRICTED ACTIVITIES**

No commercial crab fishing is allowed.

**SPECIES AFFECTED**

King crab

**NOTES**

The winter closed area provides subsistence fishers in Nome an area near to town where they can fish. The summer closed areas also push the commercial fleet away from subsistence fishers.

**AREA (approx.): 3,403 sq. nmi**





