



# **Marine Protected Areas in the U.S. Arctic**

Information from NOAA's MPA Inventory

Mimi D'lorio

NOAA MPA Center

# NOAA Definition of MPA

- ✓ Area
- ✓ Marine
- ✓ Reserved
- ✓ Lasting
- ✓ Protection

Key Term	Definition
Lasting	For natural heritage and cultural heritage MPAs, the site's authority must clearly state its intent to provide permanent protection. This definition recognizes that subsequent to establishment, MPA designation and level of protection may change for various reasons, including natural disasters that may destroy or alter resources or changes in societal values. Should any of these changes occur, the status of the MPA relative to the national system could be re-evaluated.
	Sites and/or protections that must have a specific legislative or other administrative action to be decommissioned shall be considered to have been established with the intent to provide permanent protection. This would include, for example, sites that have a requirement for periodic renewal contingent on evaluation of effectiveness, with no specified expiration date.
	For sustainable production MPAs, the site must be established with the intent at the time of designation to provide, at a minimum, the duration of protection necessary to achieve the mandated long-term sustainable production objectives for which the site was established.
	For all MPAs, the site must provide the same level and type of protection at a fixed location and fixed and regular period of any duration during a year.
Protection	Must have existing laws or regulations that are designed and applied to afford the site with increased protection for part or all of the natural and submerged cultural resources therein for the purpose of maintaining or enhancing the lasting conservation of these resources, beyond any general protections that apply outside the site.  Application of this criterion would exclude restricted areas that are established for purposes other than conservation. The term would not include, for example, areas closed for navigational safety, areas closed to safeguard modern human-made structures (e.g., submarine cable no-anchor zones), polluted shellfish-bed closure areas, areas closed to avoid fishing gear conflicts, and areas subject to area-based regulations that are established solely to limit fisheries by quota management or to facilitate enforcement.

# MPAs by Conservation Focus



**Natural Heritage:** MPAs or zones established and managed wholly or in part to sustain, conserve, restore, and understand the protected area's natural biodiversity, populations, communities, habitats, and ecosystems; the ecological and physical processes upon which they depend; and, the ecological services, human uses and values they provide to this and future generations.

*Examples: Natural Heritage MPAs include most national marine sanctuaries, national parks, national wildlife refuges, and many state MPAs.*



**Cultural Heritage:** MPAs or zones established and managed wholly or in part to protect and understand the legacy of physical evidence and intangible attributes of a group or society which is inherited and maintained in the present and bestowed for the benefit of future generations.

*Examples: Cultural Heritage MPAs include some national marine sanctuaries, national and state parks, and national historic monuments.*



**Sustainable Production:** MPAs or zones established and managed wholly or in part with the explicit purpose of supporting the continued extraction of renewable living resources (such as fish, shellfish, plants, birds, or mammals) that live within the MPA, or that are exploited elsewhere but depend upon the protected area's habitat for essential aspects of their ecology or life history (feeding, spawning, mating, or nursery grounds).

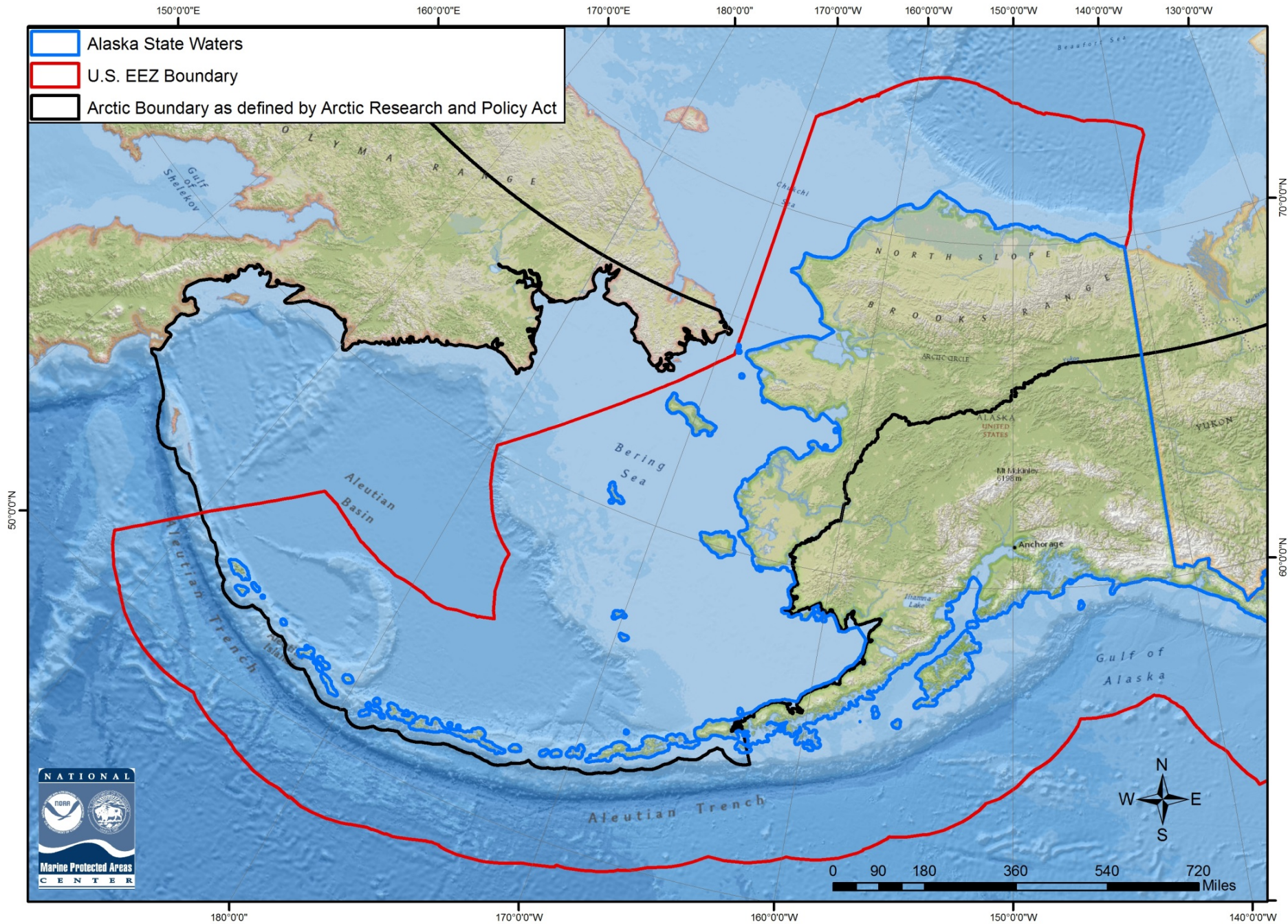
*Examples: Sustainable Production MPAs include some national wildlife refuges and many federal and state fisheries areas, including those established to recover over-fished stocks, protect by-catch species, or protect essential fish habitats.*

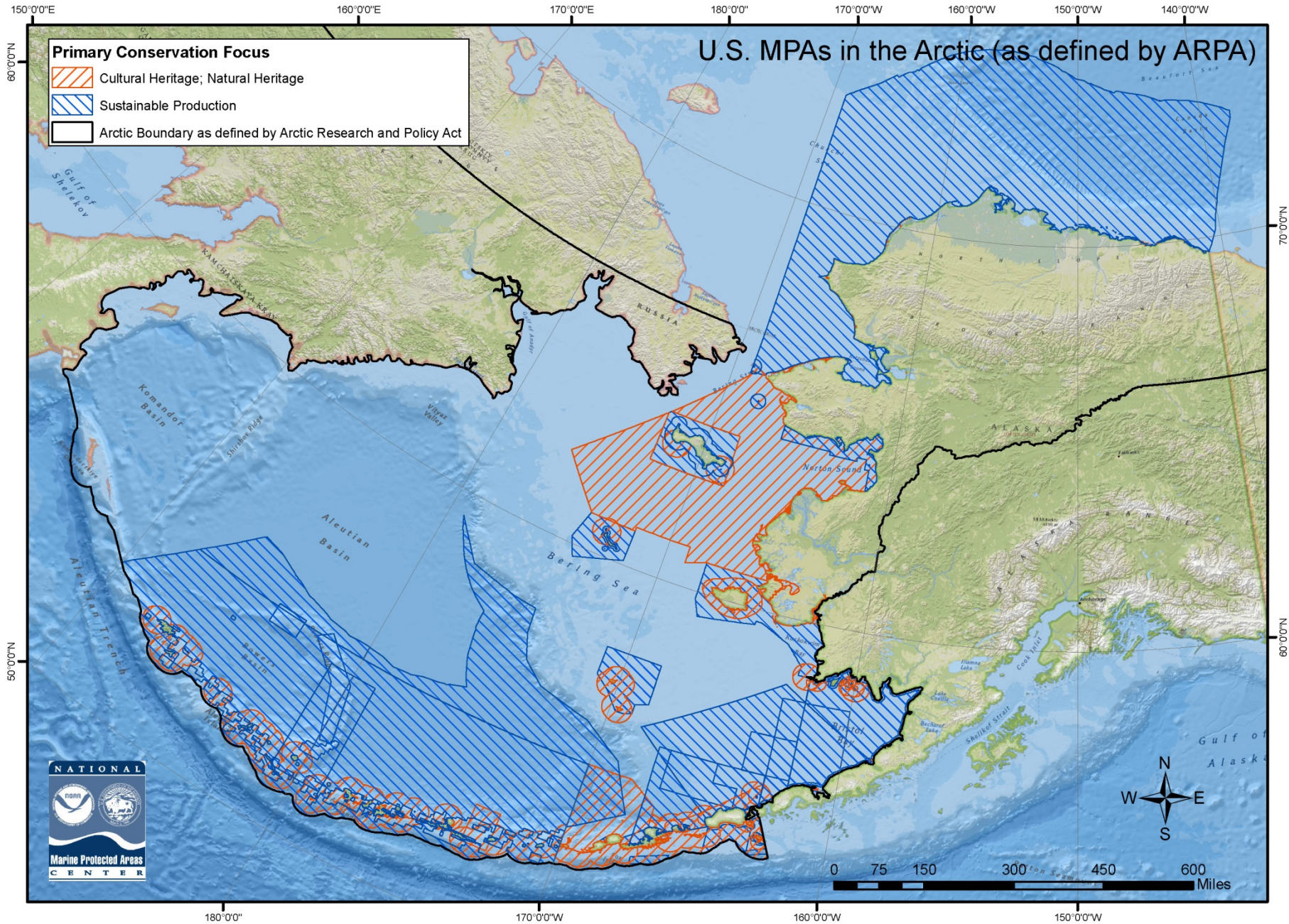
# MPA Inventory Data

- Site Name
  - Management Agency
  - Level of Government
  - Level of Protection
  - Marine Area
  - Year Established
  - Permanence
  - Constancy
  - Scale of Protection
  - Primary Conservation Focus
  - Fishing Restrictions
- Walrus Islands State Game Sanctuary
  - Alaska Department of Fish and Game
  - State
  - Zoned w/No Take Areas
  - 750 sq km
  - 1989
  - Permanent
  - Year-round
  - Focal Resource
  - Sustainable Production
  - Commercial Fishing Restricted



# Geographic Extent





150°0'0"E 160°0'0"E 170°0'0"E 180°0'0" 170°0'0"W 160°0'0"W 150°0'0"W 140°0'0"W 130°0'0"W

# Natural Heritage/Cultural Heritage MPAs within the ARPA boundary

- Alaska Maritime National Wildlife Refuge
- Arctic National Wildlife Refuge
- Bering Land Bridge National Park and Preserve
- Cape Krusenstern National Monument
- Northern Bering Sea Research Area
- Steller Sea Lion Protection Areas
- Walrus Islands State Game Sanctuary
- Walrus Protection Areas
- Yukon Delta National Wildlife Refuge

50°0'0"N

70°0'0"N

60°0'0"N



Alaska Maritime National Wildlife Refuge  
 Steller Sea Lion Protection Areas, Gulf of Alaska

Alaska Maritime National Wildlife Refuge  
 Cape Krusenstern National Monument

Arctic National Wildlife Refuge

Bering Land Bridge National Park and Preserve

Northern Bering Sea Research Area

Yukon Delta National Wildlife Refuge

Walrus Islands State Game Sanctuary

Walrus Protection Areas

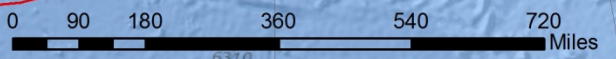
Steller Sea Lion Protection Areas,  
 Bering Sea Subarea -  
 Pollock Restriction Area

Steller Sea Lion Protection Areas,  
 Bering Sea Subarea  
 Bogoslof Area

Gulf of Alaska



- U.S. EEZ Boundary
- Arctic Boundary as defined by Arctic Research and Policy Act

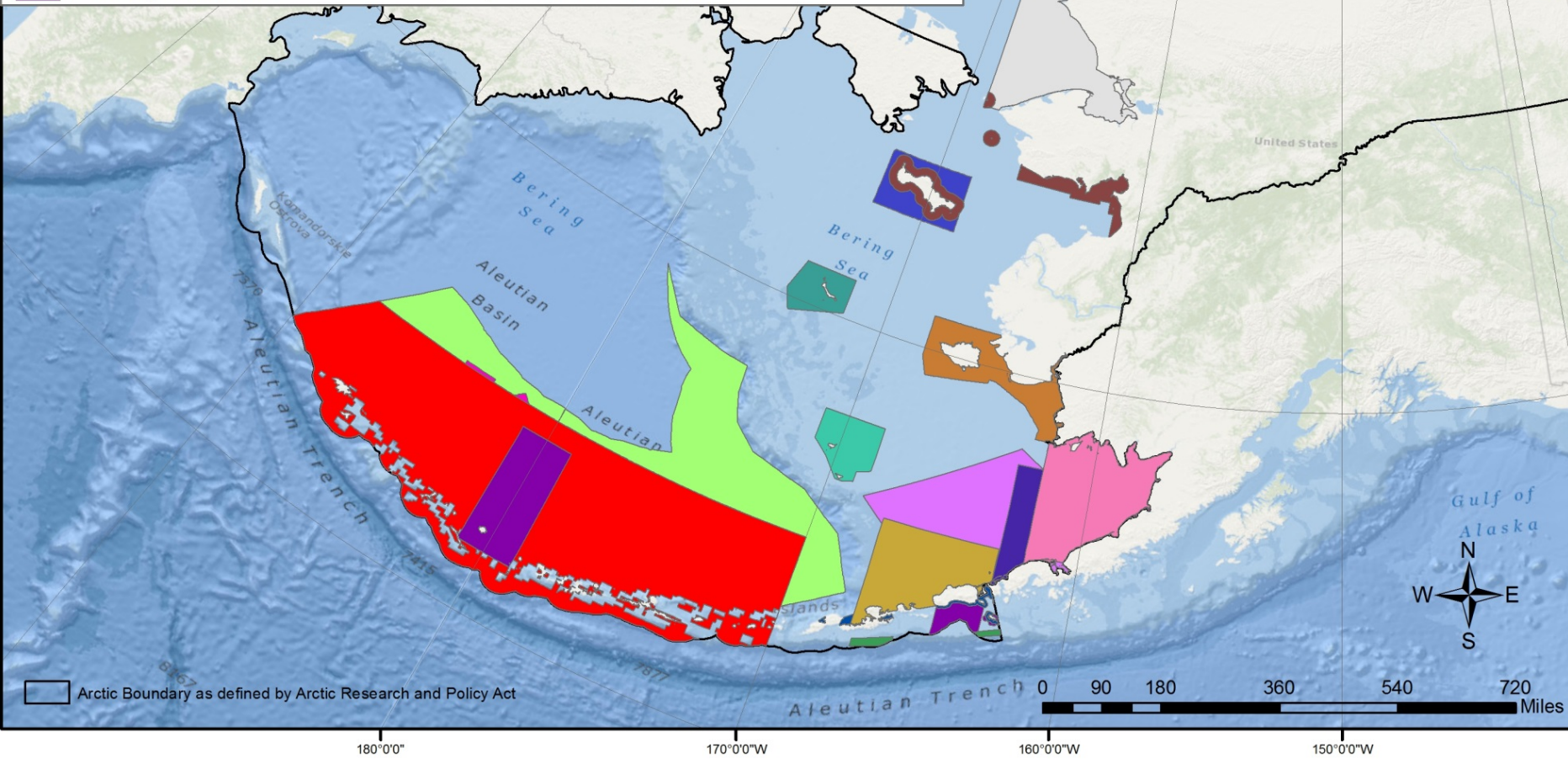


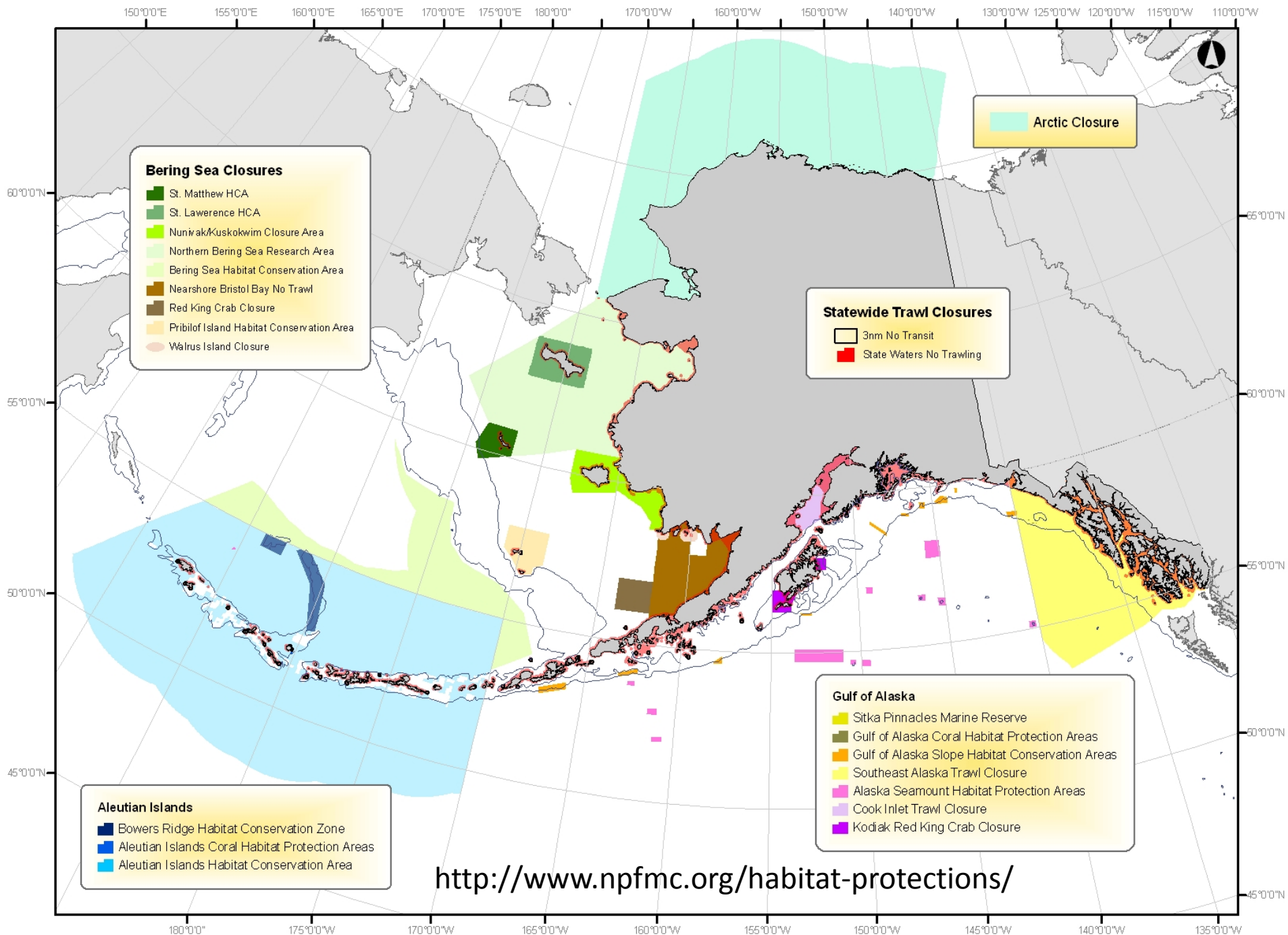
180°0'0" 170°0'0"W 160°0'0"W 150°0'0"W 140°0'0"W



# Sustainable Production MPAs within the ARPA boundary

- |  |  |
|--|--|
|  Alaska Seamount Habitat Protection Areas         |  King Crab Closed Areas  |
|  Aleutian Islands Coral Habitat Protection Area  |  Nearshore Bristol Bay Trawl Closure                              |
|  Aleutian Islands Habitat Conservation Area      |  Non-Pelagic Trawl Gear Restriction Areas                         |
|  Arctic Management Area                          |  Nunivak/Etolin/Kuskokwim Habitat Conservation Area               |
|  Bering Sea Habitat Conservation Area            |  Pribilof Island Area Habitat Conservation Area                   |
|  Bowers Ridge Habitat Conservation Zone          |  Red King Crab Savings Area                                       |
|  Catcher Vessel Operational Area                 |  Groundfish Closed Waters - St. Matthew, Hall, & Pinnacle Islands |
|  Chum Salmon Savings Area                        |  St. Lawrence Island Habitat Conservation Area                    |
|  Dungeness Crab Commercial Fishery Closures      |  St. Matthews Island Habitat Conservation Area                    |
|  Scallop Closed Areas                            |  Trawl Gear Restricted Area - Bristol Bay                         |
|  Gulf of Alaska Slope Habitat Conservation Areas |  Zone 1 (512) Closure to Trawl Gear                               |
|  Halibut Longline Closed Area                    |  Zone 1 (516) Closure to Trawl Gear                               |





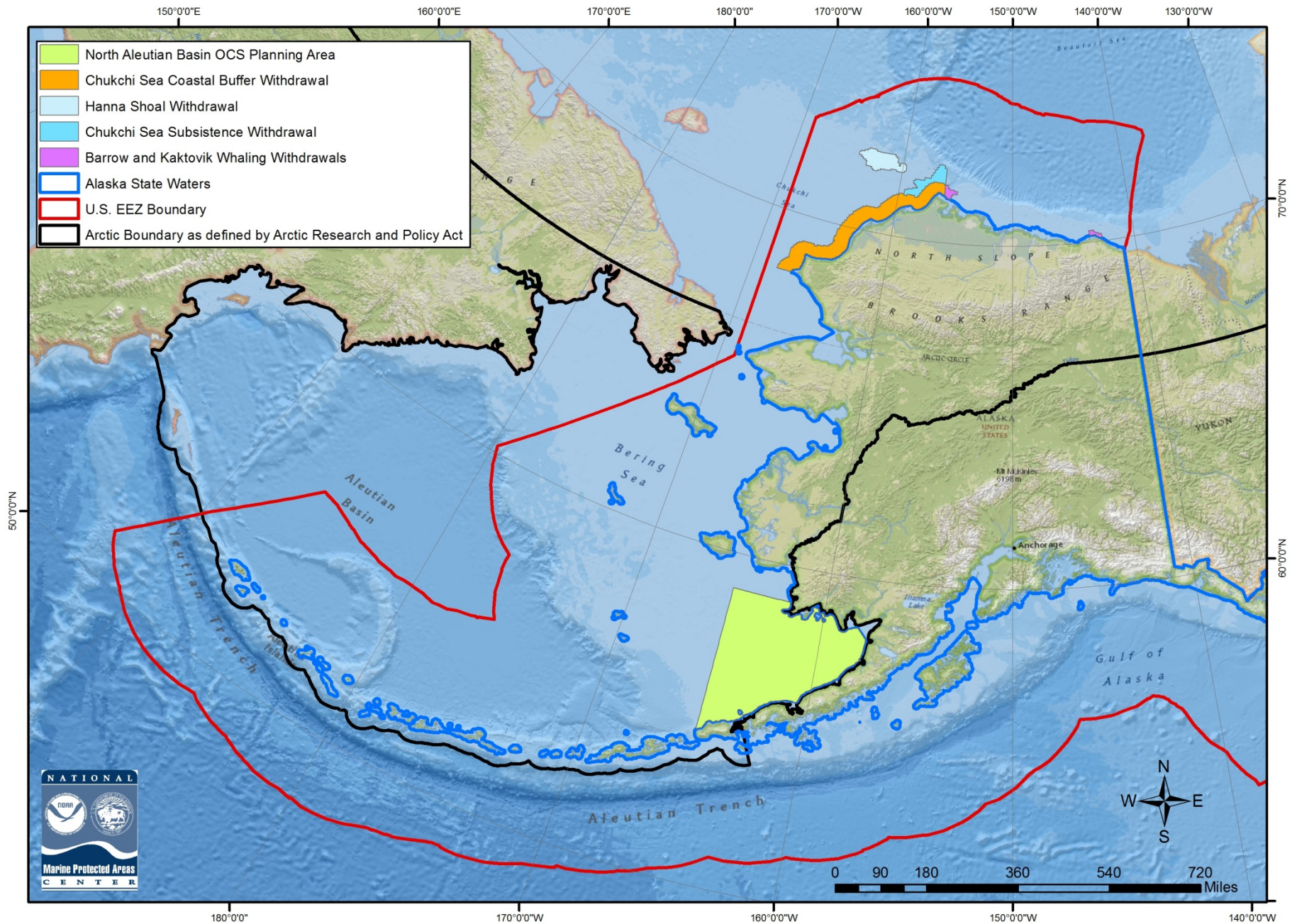
# Natural and Cultural Heritage

MPA Name	Level of Government	Management Agency	Marine Area (km2)	Level of Protection	Primary Conservation Focus
Cape Krusenstern National Monument	Federal	National Park Service	36	Uniform Multiple Use	Cultural Heritage
Alaska Maritime National Wildlife Refuge	Federal	U.S. Fish and Wildlife Service	595	Uniform Multiple Use	Natural Heritage
Arctic National Wildlife Refuge	Federal	U.S. Fish and Wildlife Service	407	Uniform Multiple Use	Natural Heritage
Bering Land Bridge National Park and Preserve	Federal	National Park Service	358	Uniform Multiple Use	Natural Heritage
Northern Bering Sea Research Area	Federal	National Marine Fisheries Service	217,834	Uniform Multiple Use	Natural Heritage
Steller Sea Lion Protection Areas, Aleutian Islands Subarea - Groundfish, Pollock, Pacific Cod, and Atka Mackerel Closures	Federal	National Marine Fisheries Service	96,403	Zoned Multiple Use	Natural Heritage
Steller Sea Lion Protection Areas, Aleutian Islands Subarea - Seguam Foraging Area	Federal	National Marine Fisheries Service	7,282	Uniform Multiple Use	Natural Heritage
Steller Sea Lion Protection Areas, Bering Sea Subarea - Bogoslof Area	Federal	National Marine Fisheries Service	36,862	Zoned Multiple Use	Natural Heritage
Steller Sea Lion Protection Areas, Bering Sea Subarea - Groundfish, Pollock, Pacific Cod, and Atka Mackerel Closures	Federal	National Marine Fisheries Service	41,001	Zoned Multiple Use	Natural Heritage
Steller Sea Lion Protection Areas, Bering Sea Subarea - Pollock Restriction Area	Federal	National Marine Fisheries Service	5,350	Uniform Multiple Use	Natural Heritage
Steller Sea Lion Protection Areas, Gulf of Alaska - Atka Mackerel Closure	Federal	National Marine Fisheries Service	32,686	Uniform Multiple Use	Natural Heritage
Steller Sea Lion Protection Areas, Gulf of Alaska - Groundfish, Pollock, and Pacific Cod Closures	Federal	National Marine Fisheries Service	17,727	Zoned Multiple Use	Natural Heritage
Walrus Protection Areas	Federal	National Marine Fisheries Service	3,234	Uniform Multiple Use	Natural Heritage
Yukon Delta National Wildlife Refuge	Federal	U.S. Fish and Wildlife Service	11,882	Uniform Multiple Use	Natural Heritage
Walrus Islands State Game Sanctuary	State	Alaska Department of Fish and Game	743	Zoned with No-take Areas	Natural Heritage

# Other MPAs

Area Name	Level of Government	Management Agency	Marine Area (km2)	Level of Protection	Primary Conservation Focus
Alaska Seamount Habitat Protection Areas	Federal	National Marine Fisheries Service	18,238	Uniform Multiple Use	Sustainable Production
Aleutian Islands Coral Habitat Protection Area	Federal	National Marine Fisheries Service	371	Uniform Multiple Use	Sustainable Production
Aleutian Islands Habitat Conservation Area	Federal	National Marine Fisheries Service	954,394	Uniform Multiple Use	Sustainable Production
Arctic Management Area	Federal	National Marine Fisheries Service	497,614	Uniform Multiple Use	Sustainable Production
Barrow Whaling Withdrawal*	Federal	Bureau of Ocean Energy Management	942	Multiple Use	Natural Heritage
Bering Sea Habitat Conservation Area	Federal	National Marine Fisheries Service	157,558	Uniform Multiple Use	Sustainable Production
Bowers Ridge Habitat Conservation Zone	Federal	National Marine Fisheries Service	18,109	Uniform Multiple Use	Sustainable Production
Catcher Vessel Operational Area	Federal	National Marine Fisheries Service	50,739	Uniform Multiple Use	Sustainable Production
Chukchi Sea Coastal Buffer Withdrawal*	Federal	Bureau of Ocean Energy Management	34,851	Multiple Use	Natural Heritage
Chukchi Sea Subsistence Withdrawal*	Federal	Bureau of Ocean Energy Management	4,716	Multiple Use	Natural Heritage
Chum Salmon Savings Area	Federal	National Marine Fisheries Service	17,555	Uniform Multiple Use	Sustainable Production
Dungeness Crab Commercial Fishery Closures	State	Alaska Department of Fish and Game	1,018	Uniform Multiple Use	Sustainable Production
Groundfish Closed Waters - St. Matthew, Hall, & Pinnacle Islands	State	Alaska Department of Fish and Game	1,132	Uniform Multiple Use	Sustainable Production
Gulf of Alaska Slope Habitat Conservation Areas	Federal	National Marine Fisheries Service	7,224	Uniform Multiple Use	Sustainable Production
Halibut Longline Closed Area	Federal	National Marine Fisheries Service	122,311	Uniform Multiple Use	Sustainable Production
Hanna Shoal Withdrawal*	Federal	Bureau of Ocean Energy Management	6,619	Multiple Use	Natural Heritage
Kalbaril Whaling Withdrawal*	Federal	Bureau of Ocean Energy Management	491	Multiple Use	Natural Heritage

Area Name	Level of Government	Management Agency	Marine Area (km2)	Level of Protection	Primary Conservation Focus
King Crab Closed Areas	State	Alaska Department of Fish and Game	23,746	Zoned Multiple Use	Sustainable Production
King Crab Closed Areas - St. Matthews, Hall and Pinnacles Islands	State	Alaska Department of Fish and Game	1,132	Uniform Multiple Use	Sustainable Production
Nearshore Bristol Bay Trawl Closure	Federal	National Marine Fisheries Service	64,945	Zoned Multiple Use	Sustainable Production
Non-Pelagic Trawl Gear Restriction Area - Alaska Peninsula	State	Alaska Department of Fish and Game	17,486	Uniform Multiple Use	Sustainable Production
Non-Pelagic Trawl Gear Restriction Area - Eastern Aleutian Islands	State	Alaska Department of Fish and Game	2,483	Uniform Multiple Use	Sustainable Production
North Aleutian Basin OCS Planning Area*	Federal	Bureau of Ocean Energy Management	135,360	Multiple Use	Natural Heritage
Nunivak/Etolin/Kuskokwim Habitat Conservation Area	Federal	National Marine Fisheries Service	33,023	Uniform Multiple Use	Sustainable Production
Pribilof Island Area Habitat Conservation Area	Federal	National Marine Fisheries Service	19,276	Uniform Multiple Use	Sustainable Production
Red King Crab Savings Area	Federal	National Marine Fisheries Service	13,680	Zoned Multiple Use	Sustainable Production
Scallop Closed Areas - Eastern Aleutian Islands	State	Alaska Department of Fish and Game	2,483	Uniform Multiple Use	Sustainable Production
Scallop Closed Areas - Eastern Bering Sea	State	Alaska Department of Fish and Game	98,708	Uniform Multiple Use	Sustainable Production
Scallop Closed Areas - Petrel Bank	State	Alaska Department of Fish and Game	44,542	Uniform Multiple Use	Sustainable Production
Scallop Closed Areas - Western Bering Sea / Aleutian Islands	State	Alaska Department of Fish and Game	44,541	Uniform Multiple Use	Sustainable Production
Scallop Closed Areas - Westward Gulf, South Alaska Peninsula	State	Alaska Department of Fish and Game	31,039	Uniform Multiple Use	Sustainable Production
St. Lawrence Island Habitat Conservation Area	Federal	National Marine Fisheries Service	24,136	Uniform Multiple Use	Sustainable Production
St. Matthews Island Habitat Conservation Area	Federal	National Marine Fisheries Service	14,953	Uniform Multiple Use	Sustainable Production
Trawl Gear Restricted Area - Bristol Bay	State	Alaska Department of Fish and Game	20,743	Uniform Multiple Use	Sustainable Production
Zone 1 (512) Closure to Trawl Gear	Federal	National Marine Fisheries Service	26,937	Uniform Multiple Use	Sustainable Production
Zone 1 (516) Closure to Trawl Gear	Federal	National Marine Fisheries Service	16,940	Uniform Multiple Use	Sustainable Production



# Talking Points

- 45 U.S. MPAs in ARPA (based on MPAC definition)
- 15 Natural Heritage MPAs (14)/Cultural Heritage (1) MPAs
- 30 'Other Measure MPAs' (aka Sustainable Production MPAs in U.S.)
- SP MPAs – 1.3 million sq km / NHCH – 430,000 sq km
- Some overlap between NHCH & SP
- MPAs cover 1.6 million sq km total in ARPA
- Not included in stats are also 6 BOEM Leasing Withdrawals (2015)
- No 'no-take' in ARPA with possible exception of parts of Walrus Island Game Sanctuary (no access without permit zones)
- Includes coastal MPAs (e.g. ANWR) with limited marine area