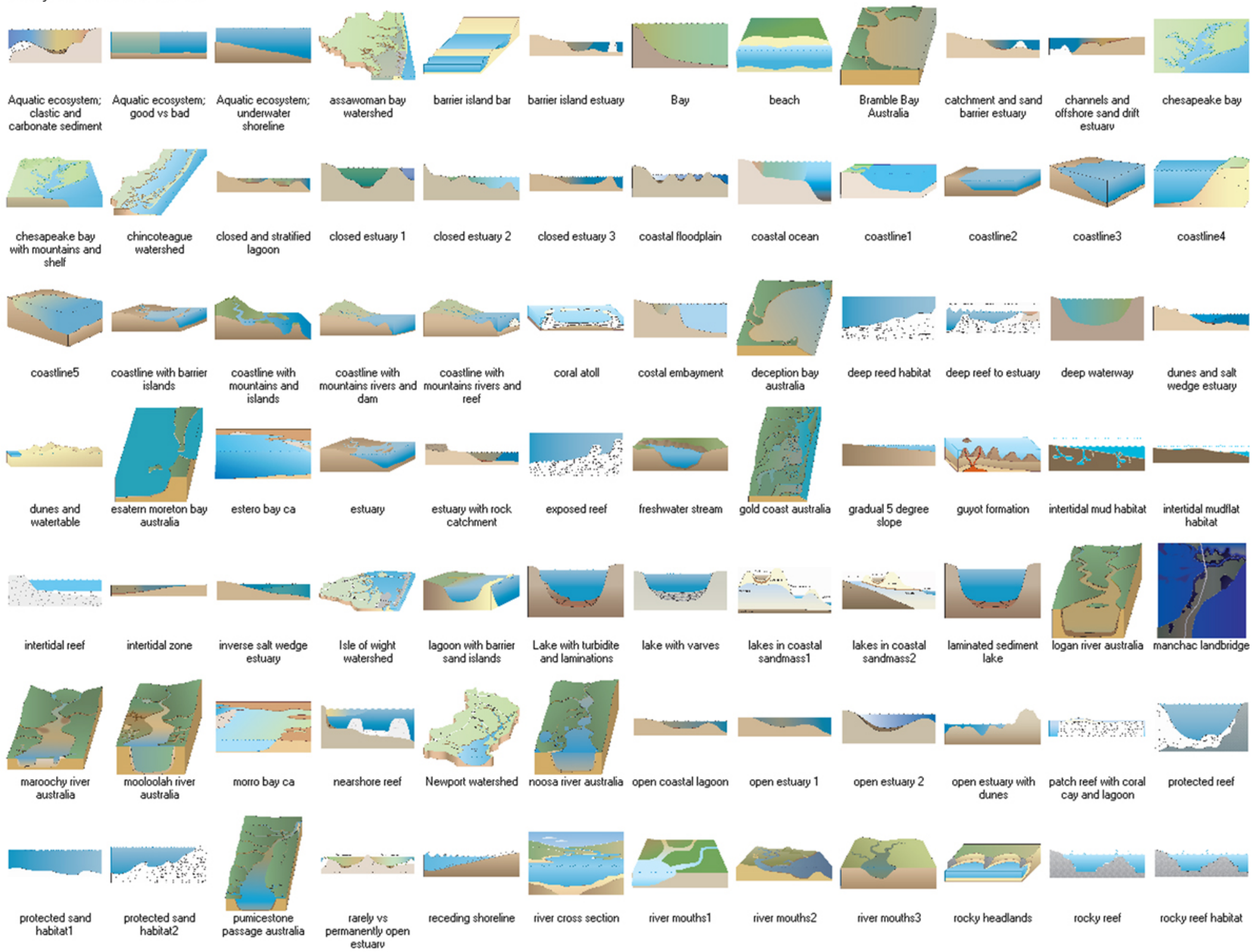
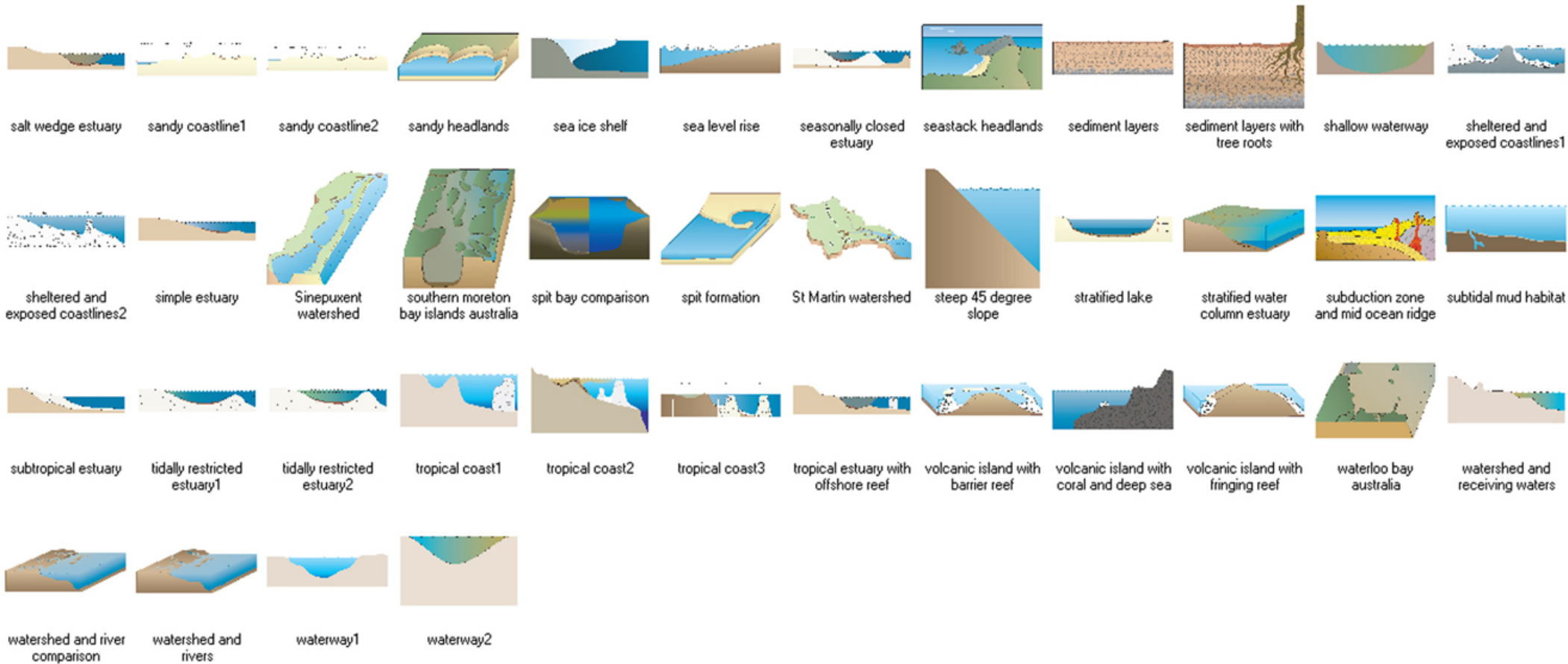


# Ecosystem: Coastal Marine





Ecosystem: Desert



desert lunette lake



desert mountains  
with dry creek and  
lake



foothills1



foothills2



interior valley



john day fossil beds  
nall mon

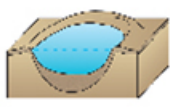
Ecosystem: Elements



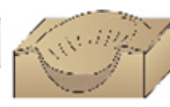
fire\_low



iceberg\_low



meteorite crater  
lake\_low



meteorite crater\_low



mountain with  
snow\_low



mountains\_low



particles\_low



rocks1\_low

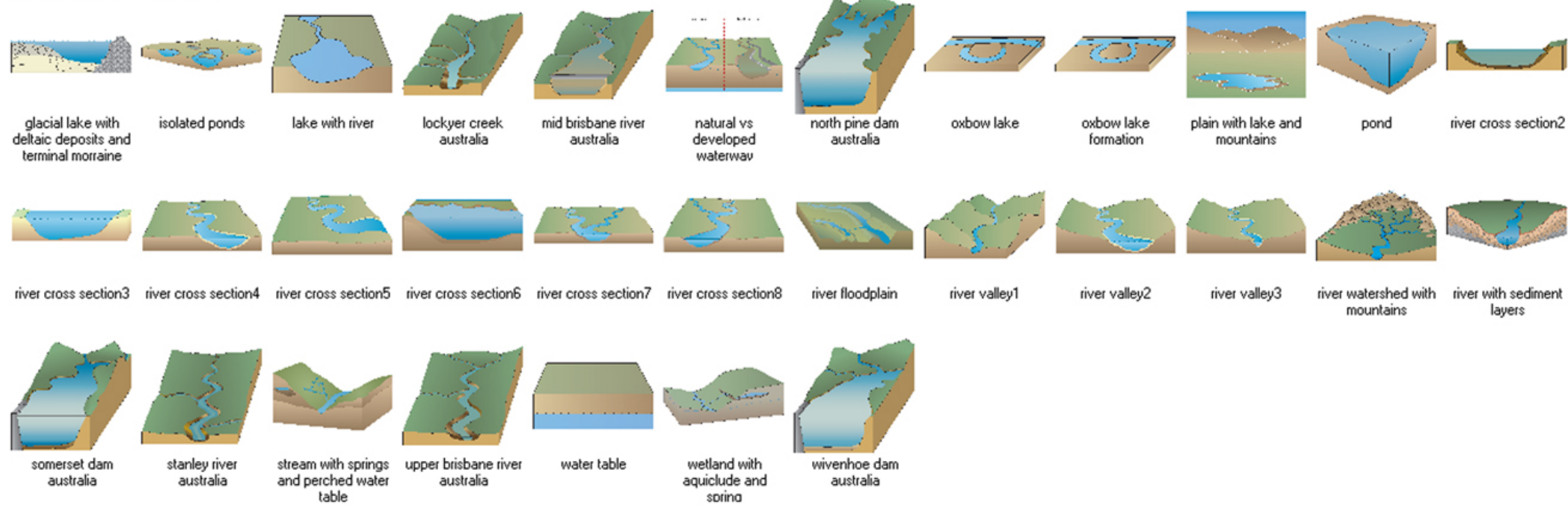


rocks2\_low

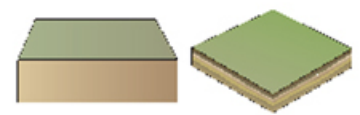


rocks3\_low

# Ecosystem: Freshwater



Ecosystem: Grassland



plain

plain with soil layers

# Ecosystem: Maps



assawoman bay watershed



Australia



chesapeake bay



chesapeake bay line map



chesapeake bay water only



chesapeake bay watershed



chincoteague bay watershed



choptank river



coastal bays



coastal bays watersheds



Delmarva



Delmarva line map



isle of wight watershed



newport watershed



sinepuxent watershed



southern florida



southern florida line map



st martin watershed



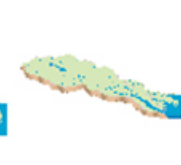
united states of america



united states of america line map

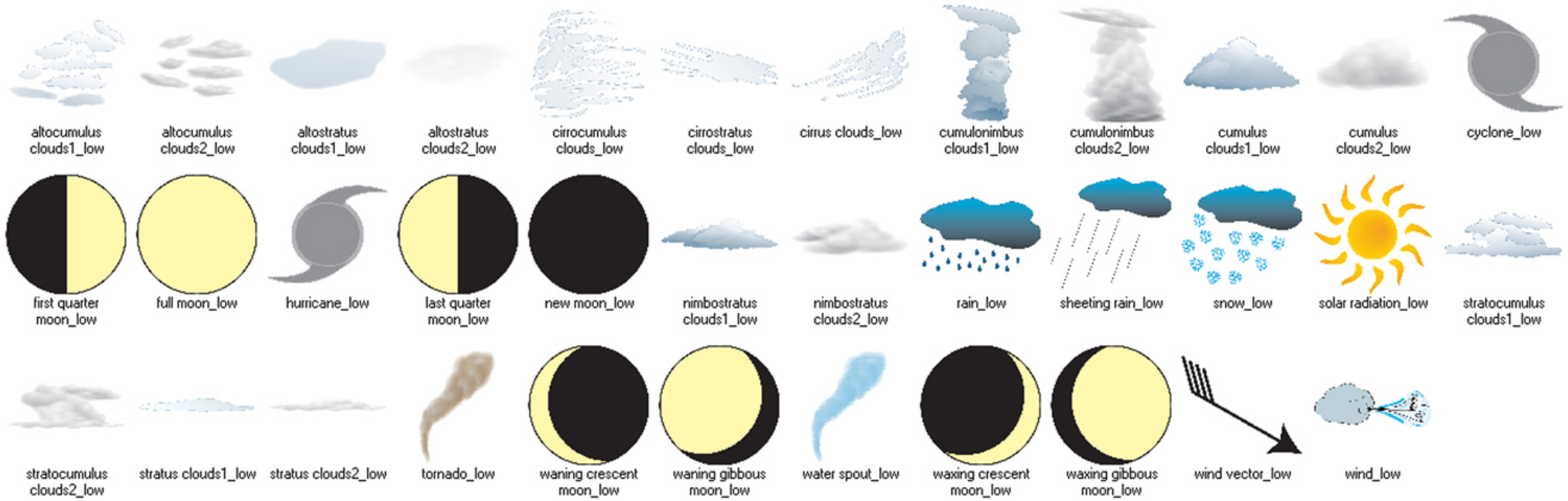


york river



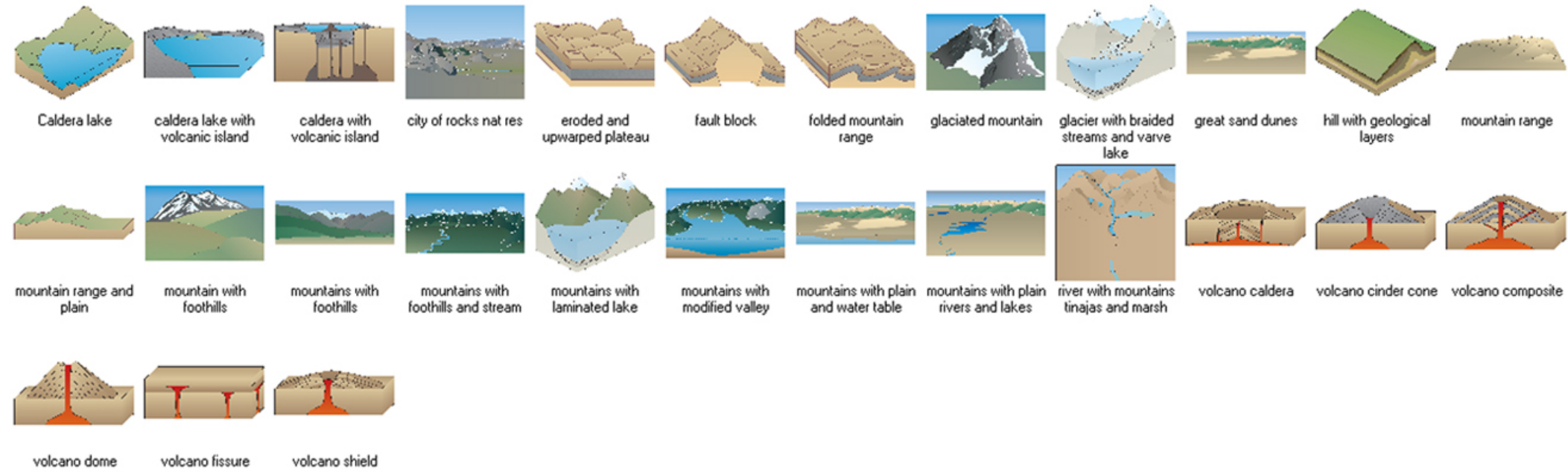
york river watershed

# Ecosystem: Meteorology and Climate

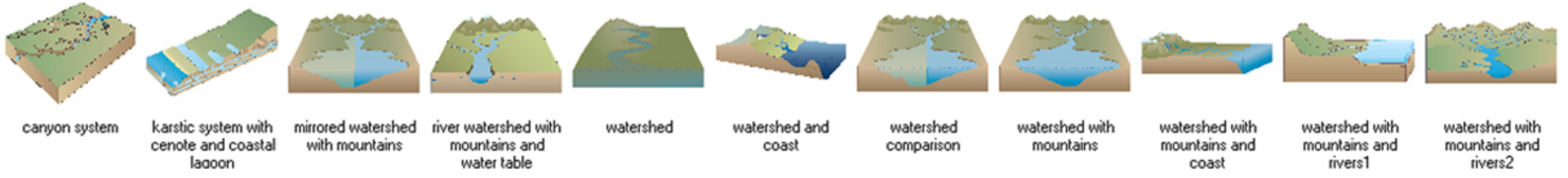




# Ecosystem: Mountains and Tundra

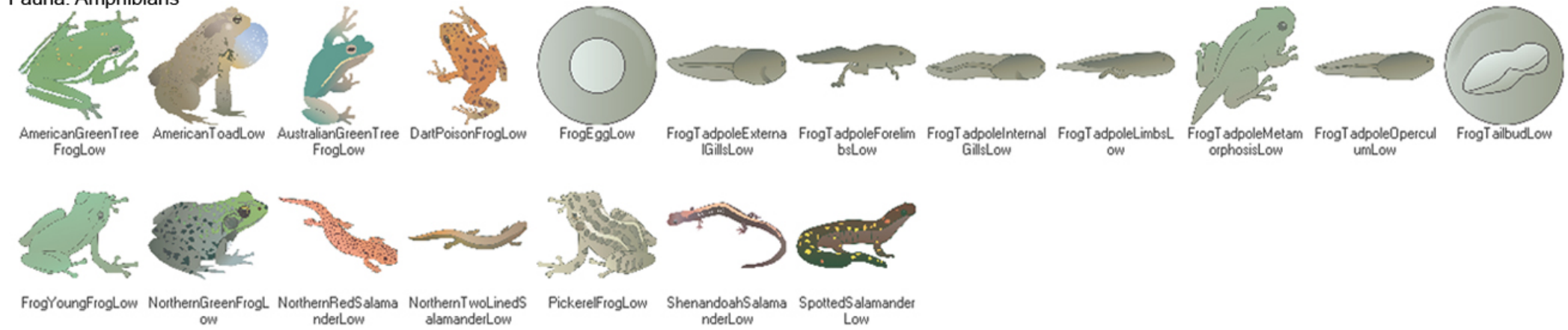


Ecosystem: Other

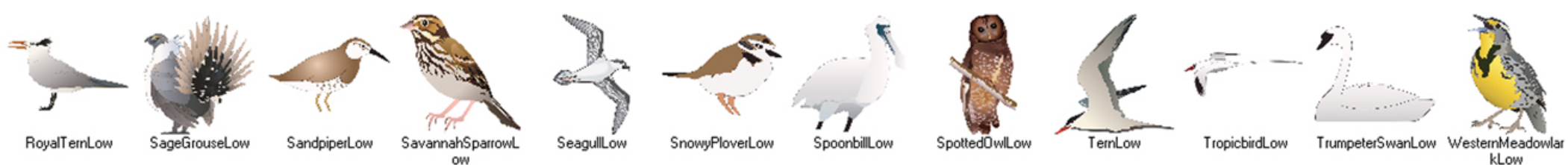
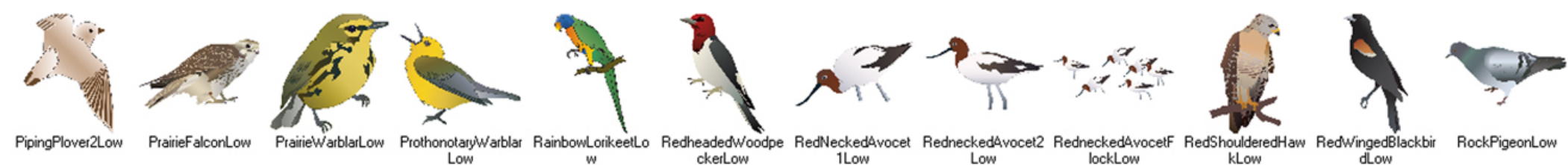
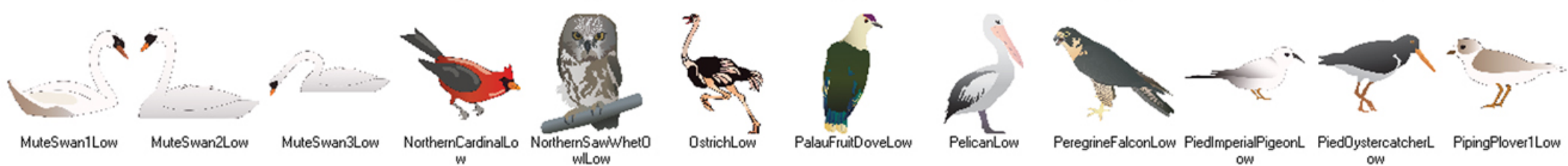
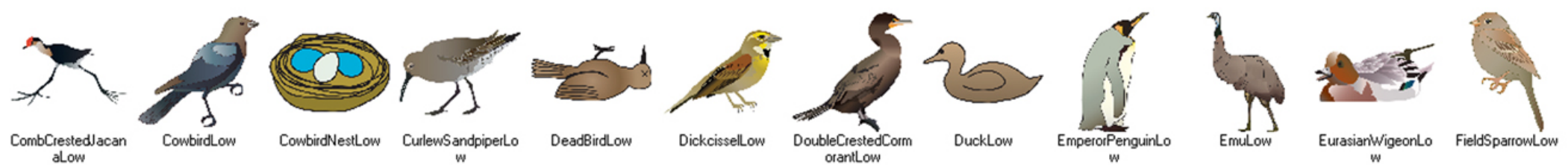
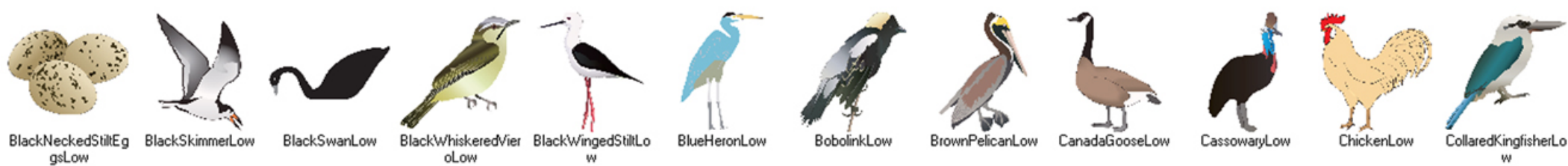


canyon system    karstic system with cenote and coastal lagoon    mirrored watershed with mountains    river watershed with mountains and water table    watershed    watershed and coast    watershed comparison    watershed with mountains    watershed with mountains and coast    watershed with mountains and rivers1    watershed with mountains and rivers2

# Fauna: Amphibians



Fauna: Birds





WhiteBelliedSeaEagleLow



WhiteTailedKiteLow



WhoopingCrane1Low



WhoopingCrane2Low

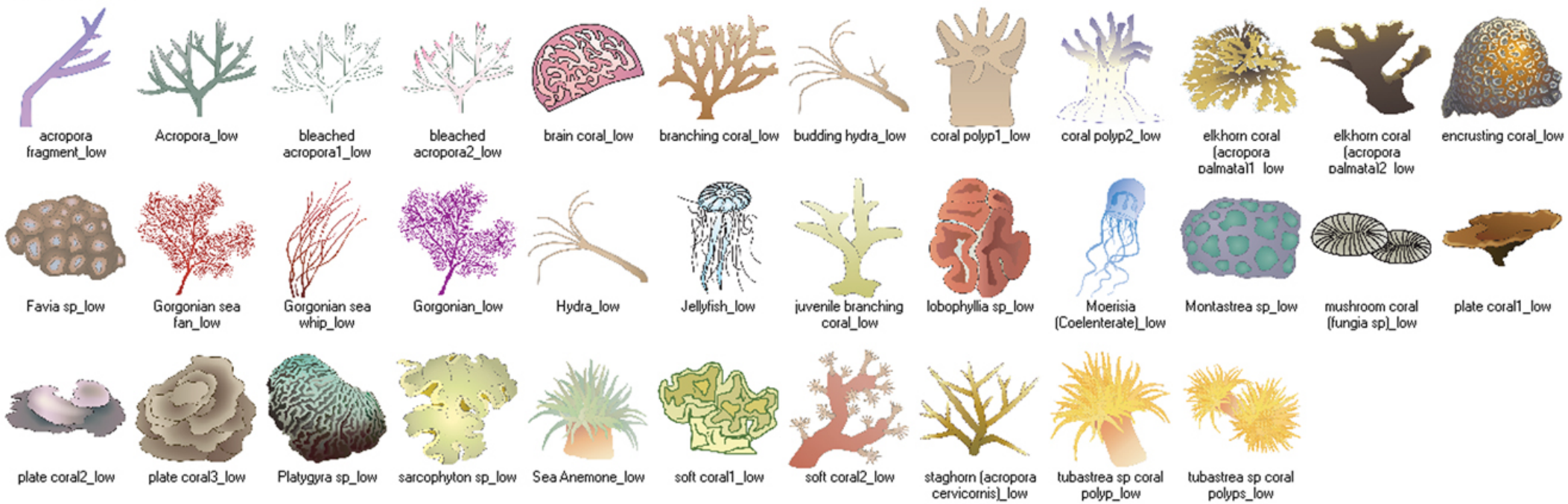


WoodThrushLow

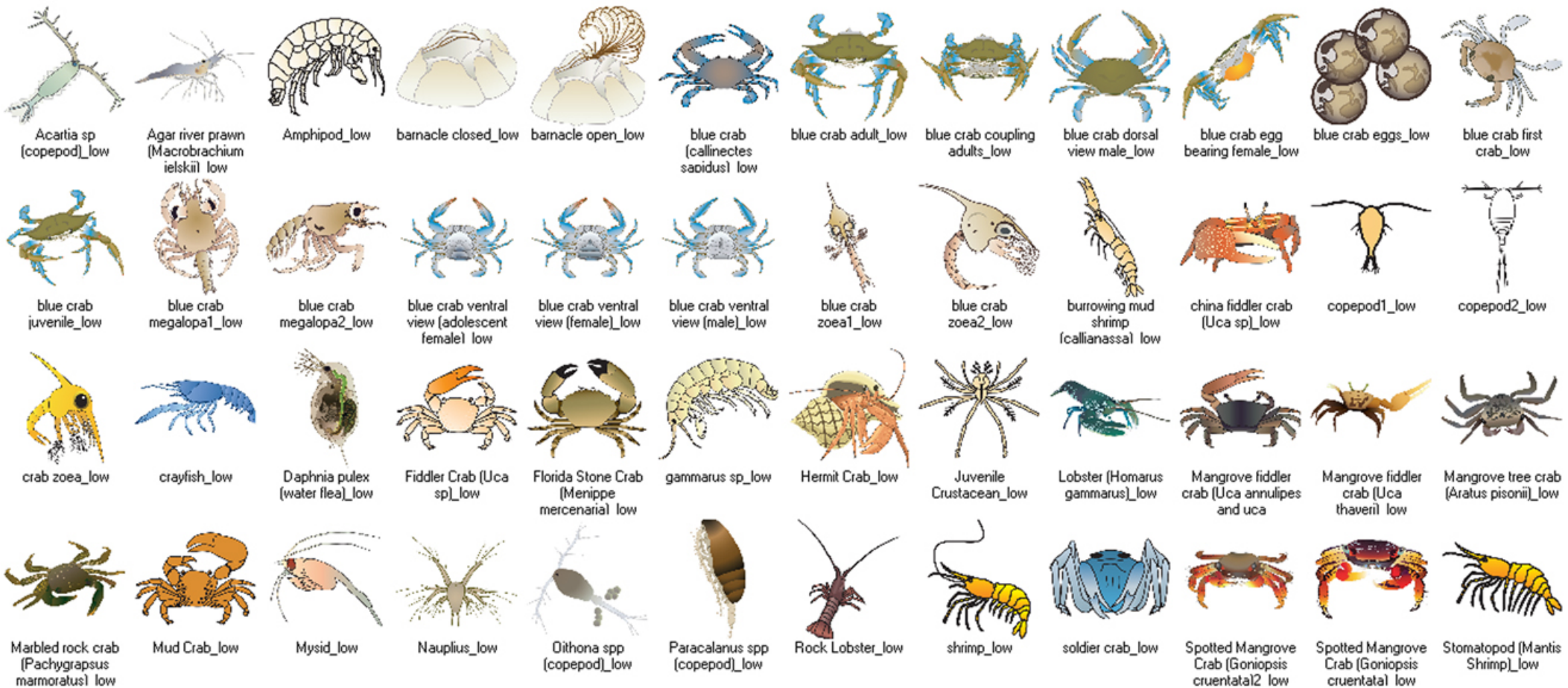


YellowWarblerLow

Fauna: Cnidaria



# Fauna: Crustaceans



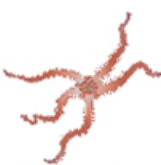
Fauna: Echinoderms



Crown of Thorns  
(*Acanthaster  
planci*) low



Cushion star  
(*Pteraster  
tesselatus*) low



Daisy brittle star  
(*Ophiopholis  
aculeata*) low



Feather Star\_low



Holothurian1\_low



Holothurian2\_low



Sea Urchin  
(*Lytechinus  
variegatus*) low



Sea Urchin\_low



Seastar1\_low



Seastar2\_low



Seastar3\_low



Seastar4\_low

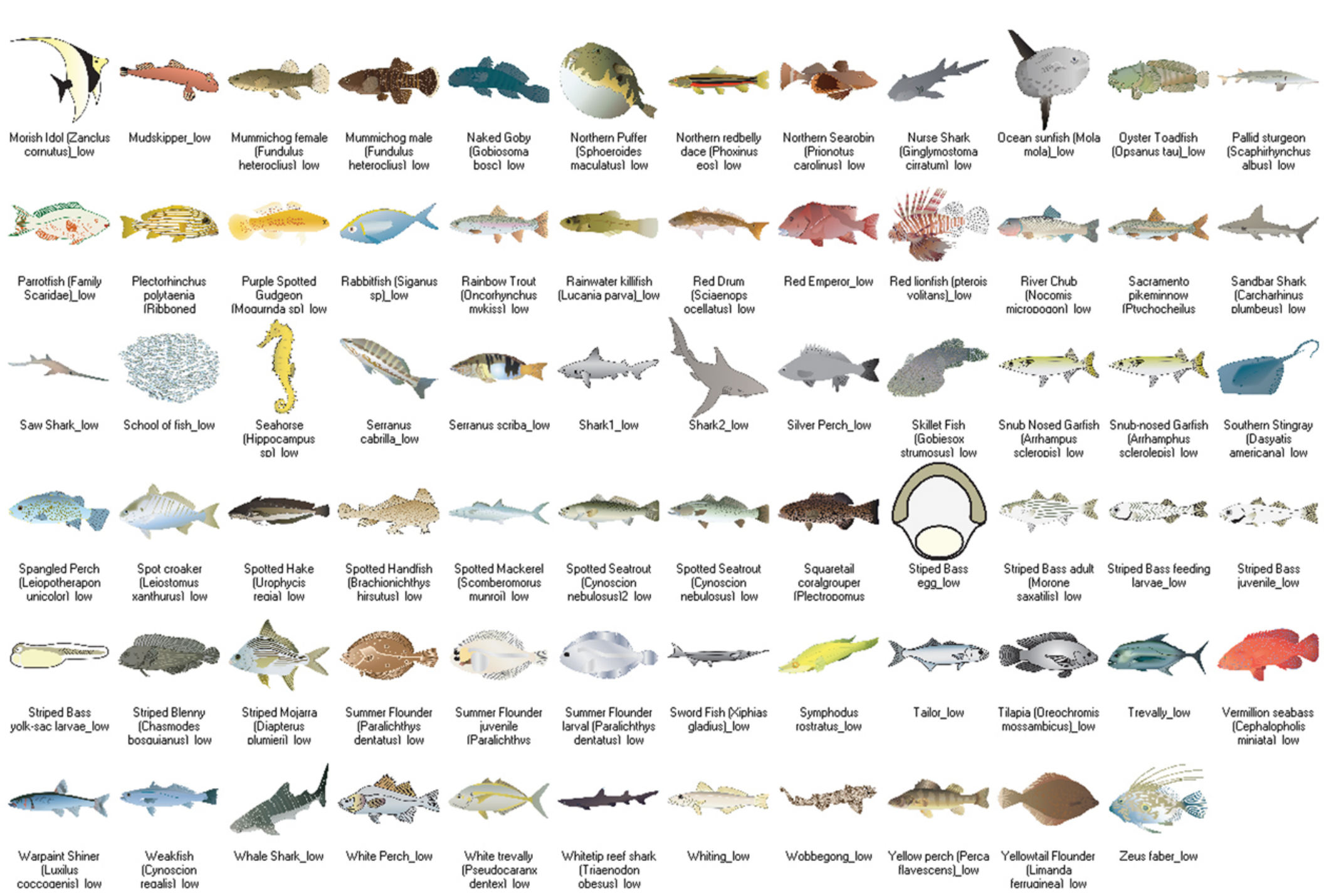


Sunflower star  
(*Pycnopodia  
helianthoides*) low

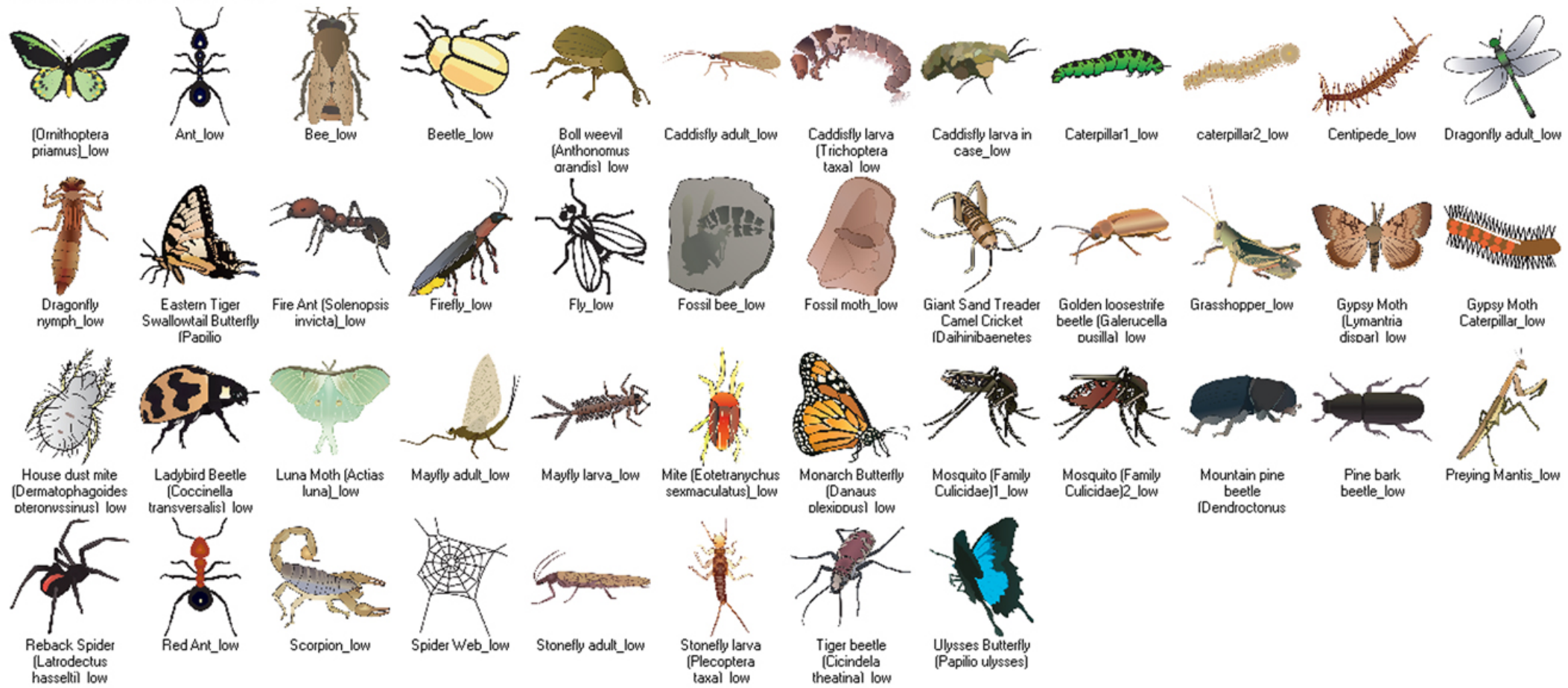


Fauna: Fish

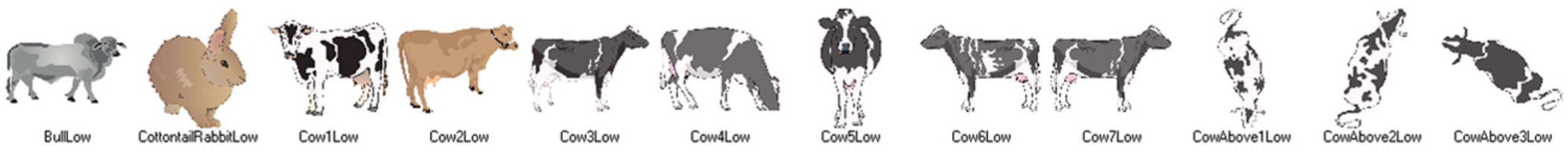
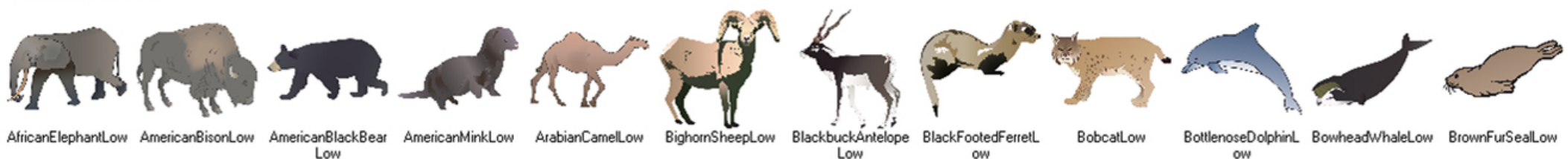




Fauna: Insects and Arachnids



Fauna: Mammals





SwiftFoxLow



Townsend'sBigEaredBatLow



WalrusLow



WhiteTailedDeerBuckLow



WhiteTailedDeerDoeLow



WhiteTailedDeerFawnLow

Fauna: Molluscs



Fauna: Other



Ascidian\_low



Bryozoan  
Colony\_low



Ctenophore\_low



Doliolid\_low



Fossil Trilobite\_low



Horseshoe crab\_low



Sea Squirt\_low



Sponge\_low



Springtail\_low

Fauna: Protozoans



Actinophrys sol  
(amoeba)\_low



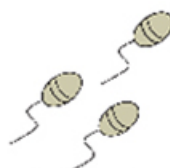
Chaos diffluens  
(amoeba)\_low



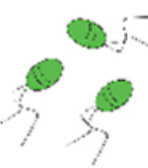
Didinium gargantua  
(ciliate)\_low



Didinium nasutum  
(ciliate)\_low



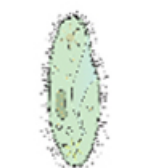
Flagellates1\_low



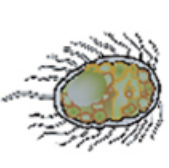
Flagellates2\_low



Laboea strobila  
(ciliate)\_low



Paramecium aurelia  
(ciliate)\_low



Scuticociliate  
(ciliate)\_low



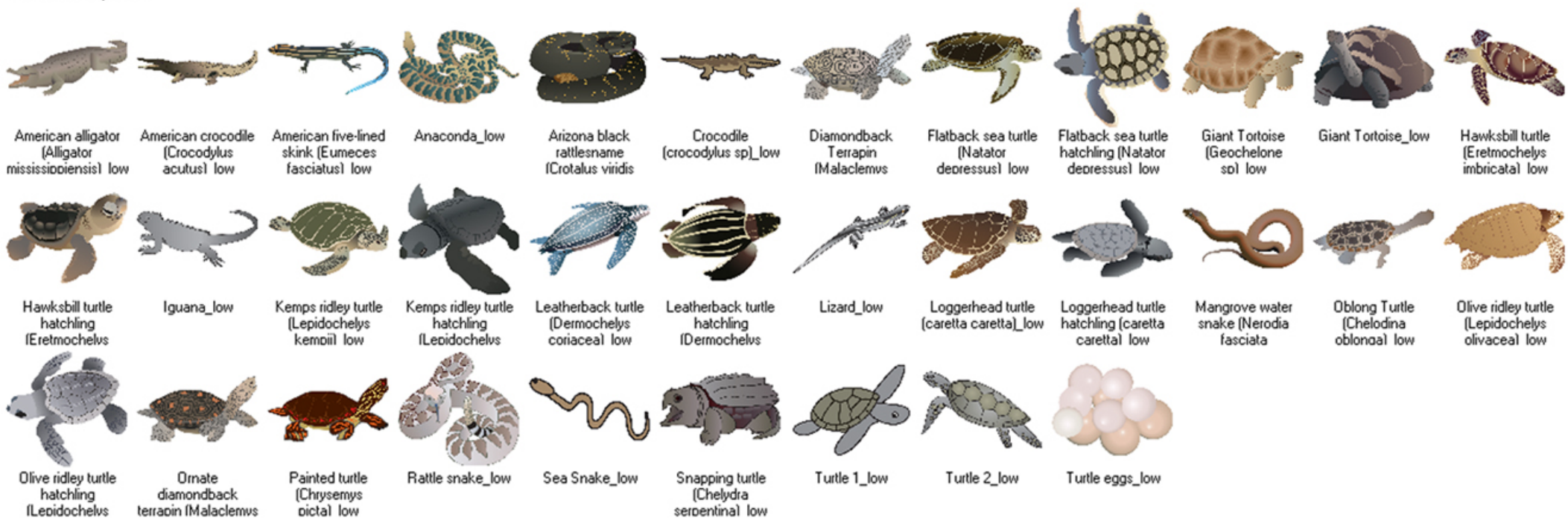
Strombidium  
(ciliate)\_low



Tintinnid  
(ciliate)\_low



# Fauna: Reptiles



Fauna: Worms



Christmas tree worms  
{Sirobranchus

Christmas tree worms  
{Sirobranchus

Divided Flatworm  
{Pseudoceros dimidiatus} low



Featherduster Worm\_low



Flat worm (Stylochus ellipticus)\_low



Flatworm\_low



Garden snail (Helix aspersa)\_low



Gordian worm\_low



Horsehair worm (Gordius sp)\_low



Polychaete1\_low



Polychaete2\_low



Roundworm (Ascaris sp)\_low

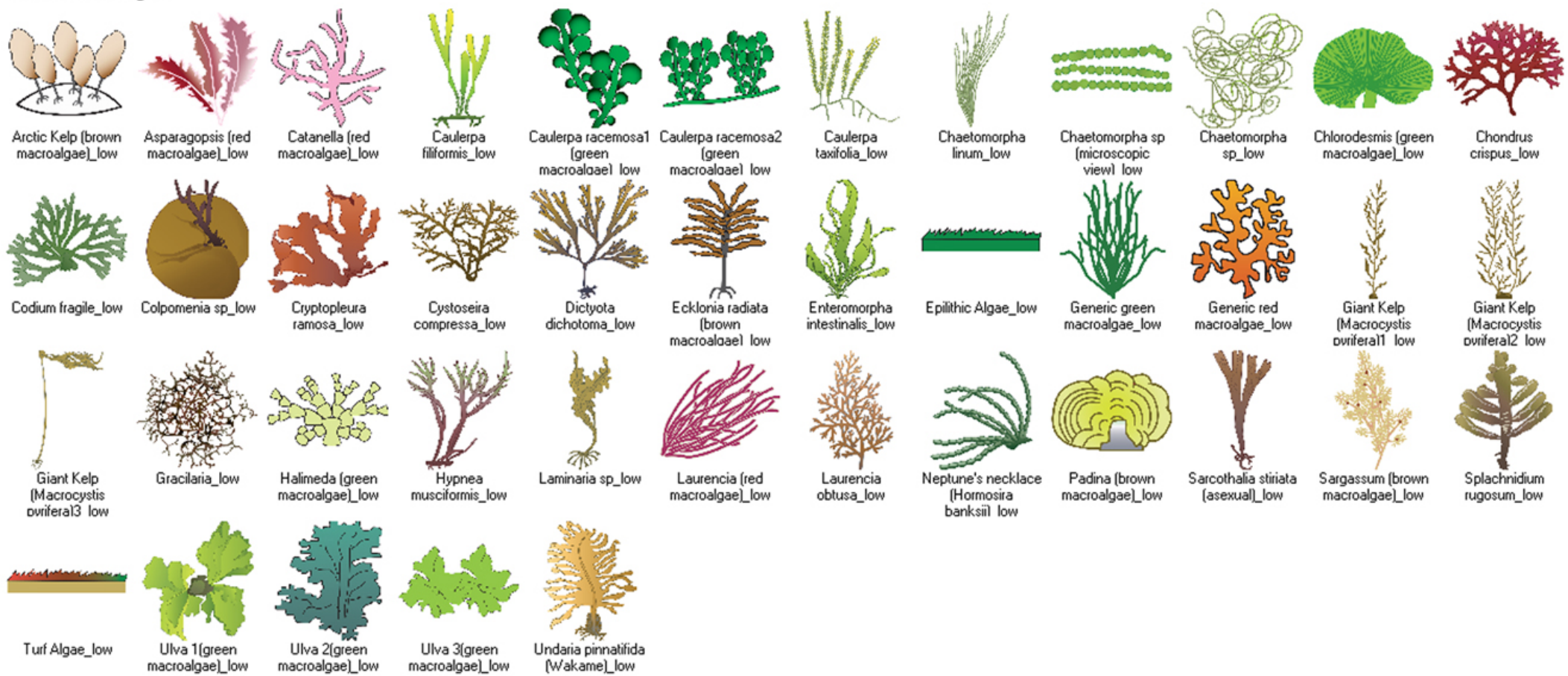


Segmented worm\_low

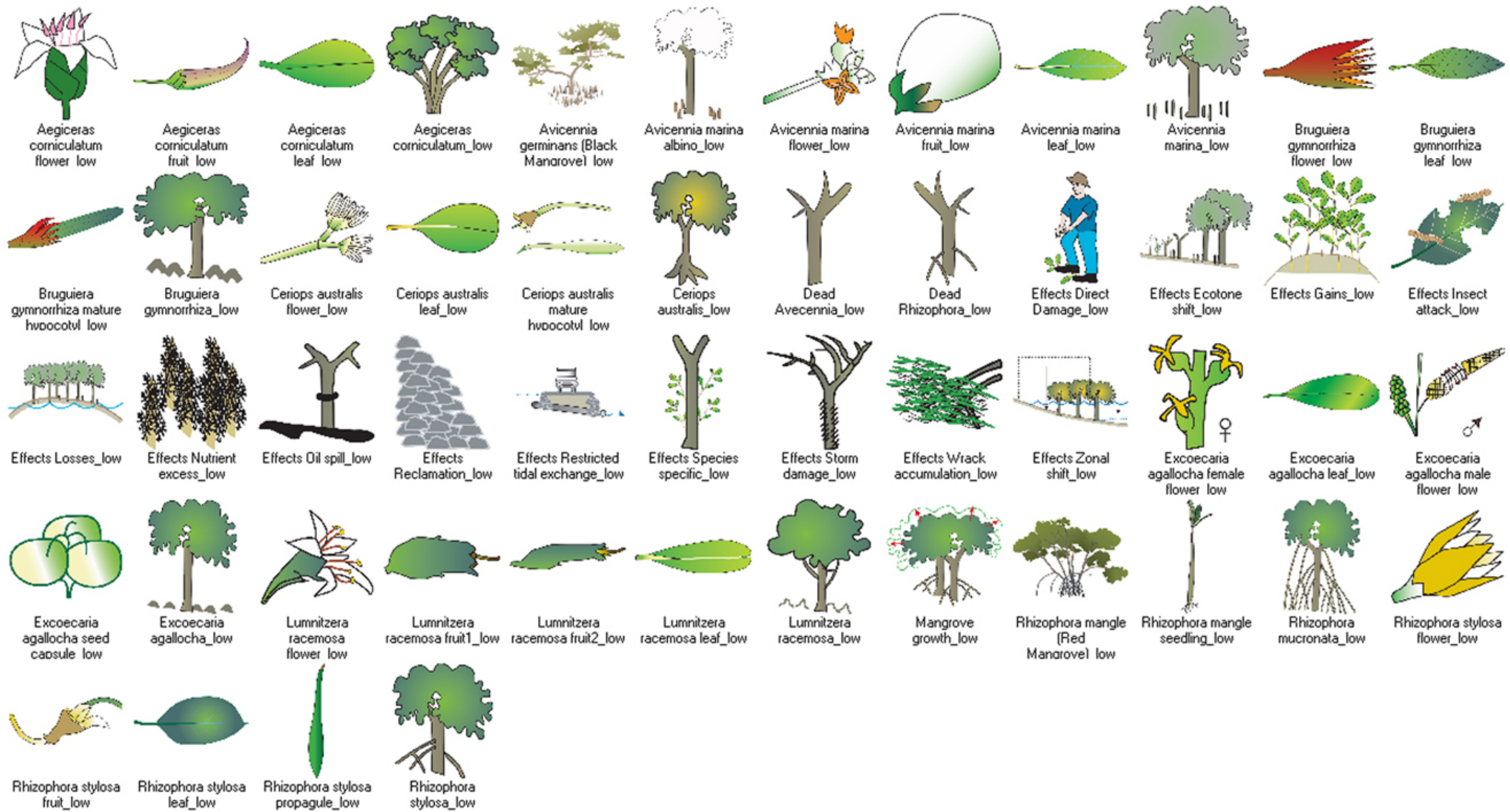


Worms\_low

# Flora: Macroalgae



Flora: Mangroves



Flora: Marsh and Wetlands



Cladium procerum  
(Leafy twia-sedael) low



Eleocharis dulcis  
(Bulkuru) with tuber low



Fimbristylis dichotoma (Tall frinoe-rush) low



Impatiens capensis  
(Spotted Jewelweed) low



Kosteletzkya virginica (Seashore mallow) low



Kosteletzkya virginica (Seashore mallow) low



Lepironia articulata  
(Blue rush) low



Miscanthus sinensis low



Oryza sp low



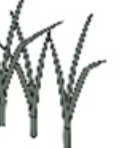
Phragmites australis detailed low



Phragmites australis singular low



Phragmites australis low



Reeds low



Sarcocornia sp  
(Samphire) low



Scirpus sp  
(Bulrush) low



Sirpus americanus low



Spartina alterniflora group low



Spartina alterniflora low



Spartina patens low



Spartina sp (Salt Marsh Grass) low



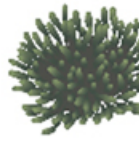
Spike Rush - Eleocharis sp low



Sporobolus low



Suaeda australis low



Tecticornia flabelliformis (Bead samohire) low



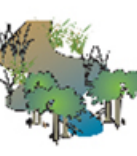
Tecticornia sp  
(Samphire) low



Typha orientalis  
(Bullrush) low



Typha sp  
(Cattail) low

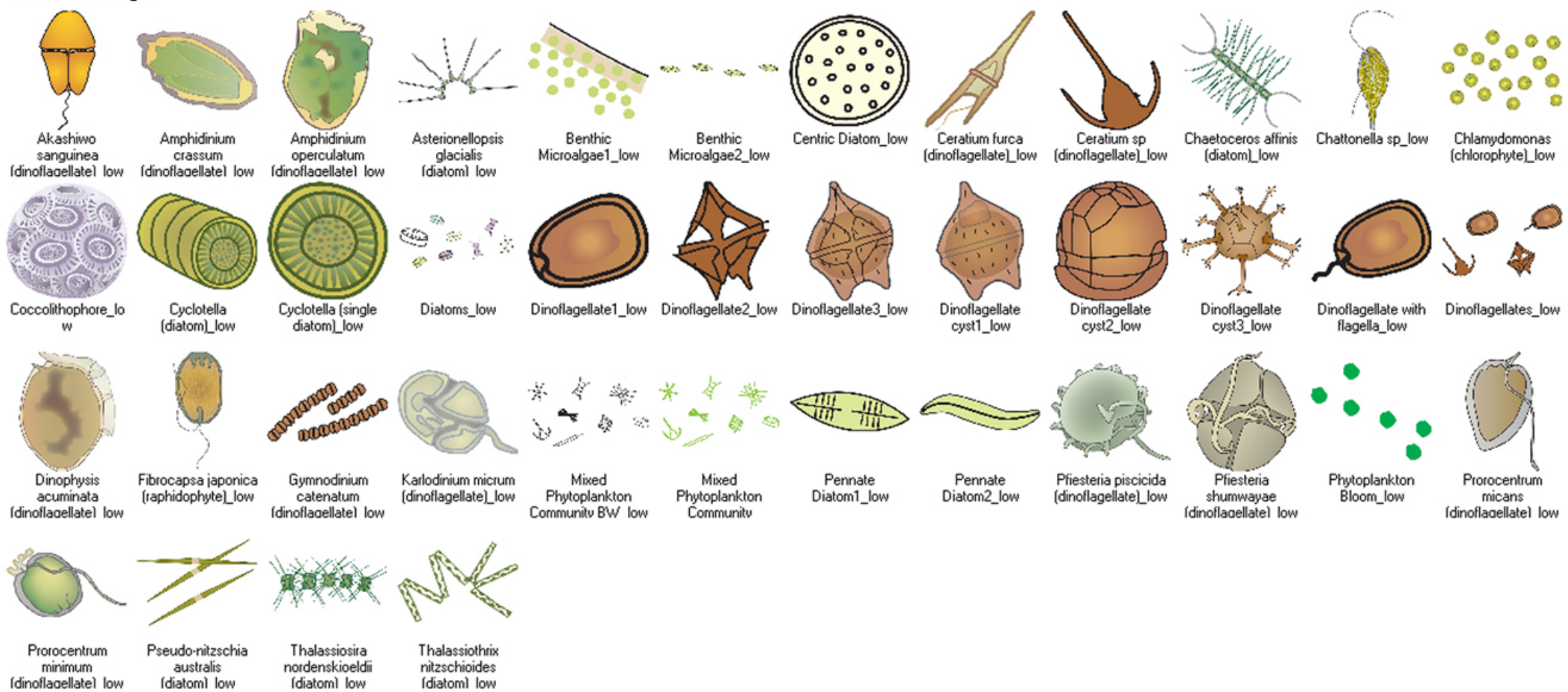


Wetland low

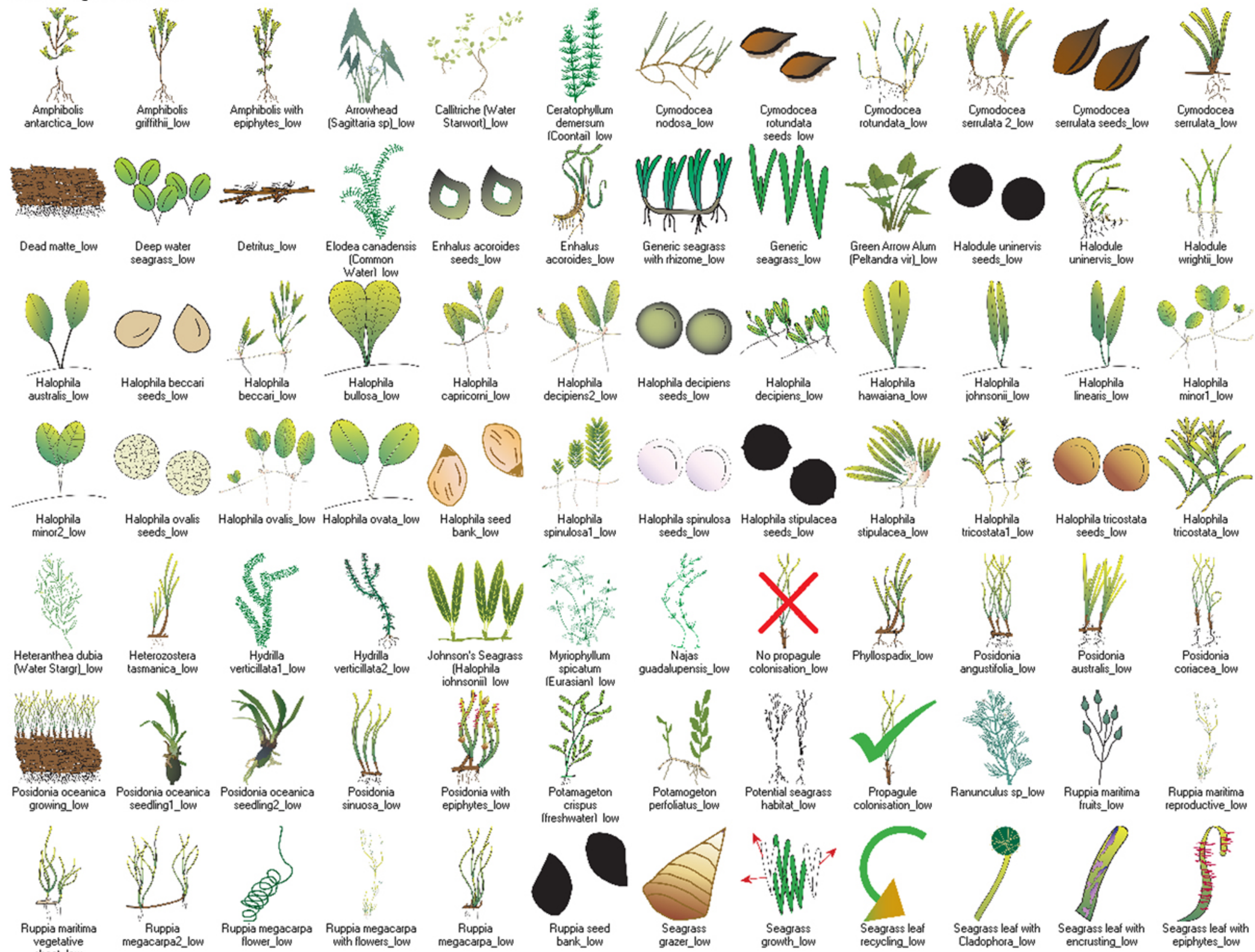


Zizania sp (Wild Rice) low

Flora: Microalgae



Flora: Seagrass and SAV





Seagrass loss\_low

Seagrass loss-recovery\_low



Shallow water seagrass\_low



Star Grass (Halophila enaemannii) low



Stuckenia pectinata\_low



Syringodium filiforme\_low



Syringodium isoetifolium2\_low



Syringodium isoetifolium seeds\_low



Syringodium isoetifolium\_low



Thalassia hemprichii1\_low



Thalassia hemprichii seeds\_low



Thalassia hemprichii\_low



Thalassia testudinum\_low



Thalassodendron ciliatum1\_low



Thalassodendron ciliatum\_low



Thalassodendron pachyrhizon\_low



Vallisneria americana\_low



Water Chestnut (Trapa natans)\_low



Water clover (Marsilea sp)\_low



Water Lily1\_low



Water Lily2\_low



Water Lily3\_low



Water Lily4\_low



Yellow Waterlily (Nuphar sp)\_low



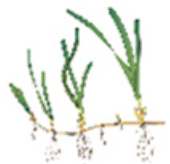
Zannichellia palustris\_low



Zostera asiatica\_low



Zostera caespitosa\_low



Zostera capensis\_low



Zostera capricornii seeds\_low



Zostera capricornii\_low



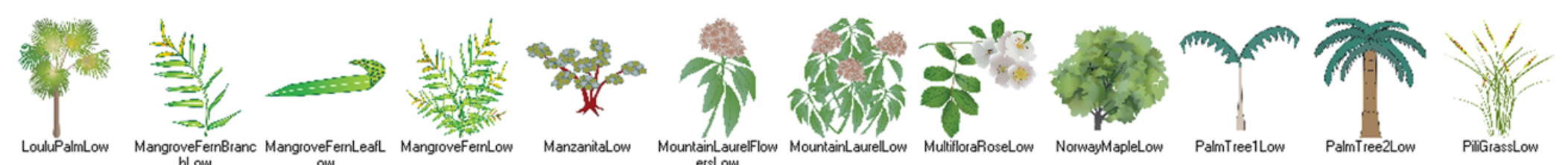
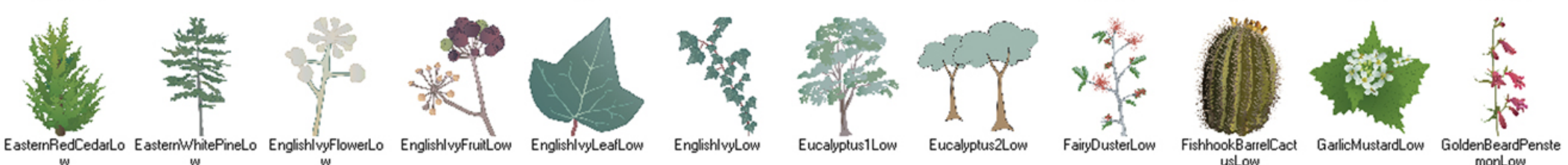
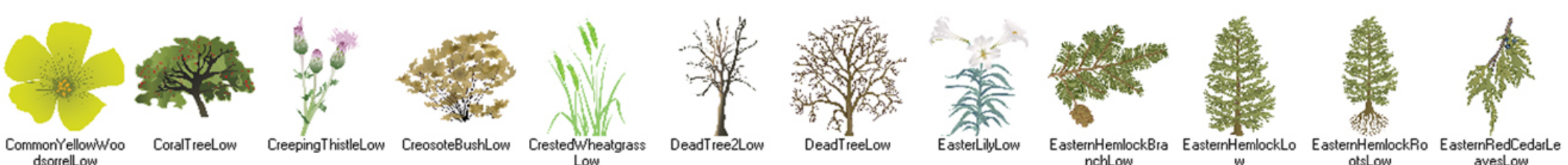
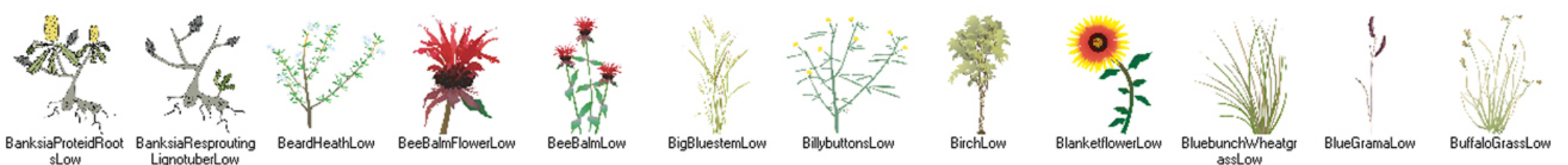
Zostera noltii\_low



Zostera seed bank\_low



Flora: Shrubs and Trees





PineTreeLow



PisoniaLow



PoisonIvyLeafLow



PoisonIvyLow



PonderosaPineLow



PrairieCordgrassLow



PuaPiloLow



PurpleConeflowerLow



PurpleLoosestrifeLow



QuilembayLow



RedMaple1Low



RedMaple2Low



RedMapleLeafLow



RiverRedGumLow



RussianOliveLeavesLow



RussianOliveLow



SaguaroCactusLow



SaltwaterPaperbarkDyingLow



ShagbarkHickoryFruitLow



ShagbarkHickoryLeavesLow



ShagbarkHickoryLow



SideFallaxLow



SilverBuffaloBerryLow



SlenderSpiderflowerLow



SouthernRedOakLow



SpicebushLow



SwampPaperbarkLow



SweetbayMagnoliaLow



SweetgumLow



SwitchgrassLow



SycamoreLow



TiTreeLeavesLow



TiTreeLow



TulipPoplarLow



VirginiaPineLow



WattleLow



WeepingWillowLow



WesternWheatgrassLow



WhiteOakLeavesLow



WhiteOakLow



WhiteSpruceLow



WhiteTurtleheadLow



WillowShrubLow



YellowStarthistleLow



YuccaLow

Human: Climate Change

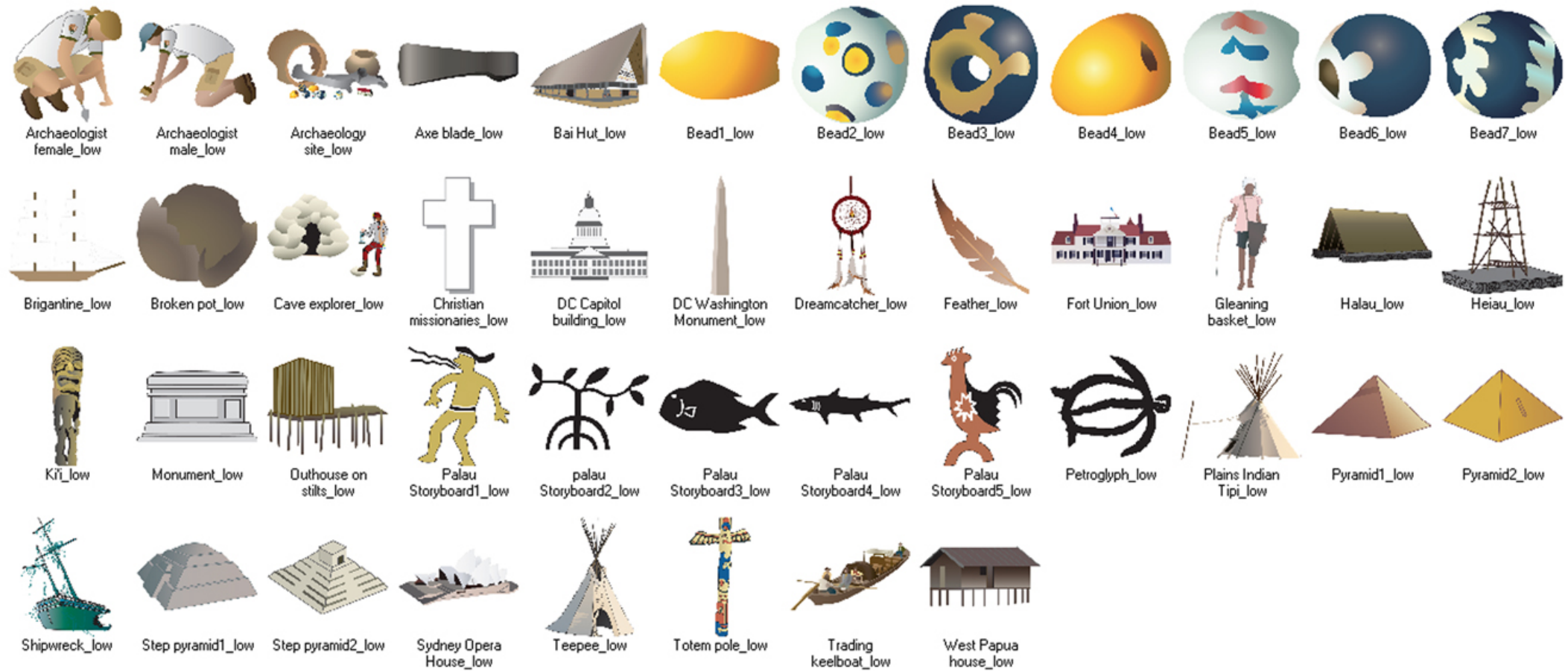


Global Warming\_low



Sea-level rise\_low

# Human: Culture and Archaeology



# Human: Development





Septic system2\_low    Septic system\_low    Stadium\_low    Strip mall\_low    Swing set\_low    Sydney Harbour Bridge\_low    University\_low    Urban Park\_low    Urban sprawl\_low    Waste disposal\_low    Waste Water Treatment Plant1\_low    Waste Water Treatment Plant2\_low



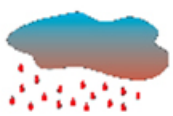
Water Pipe1\_low    Water Pipe2\_low    Water Tower\_low    Wind turbine\_low

Human: Education



Education boat  
(Indonesia)\_low

# Human: Environmental Degradation



Acid rain\_low



Air quality high\_low



Air quality low\_low



Air quality medium\_low



Landfill\_low



Oil Spill\_low



Old bottle\_low



Old tires\_low



Plastic bag\_low



Pop bottle\_low



Pop can\_low



Receding shoreline\_low



Roadside trash\_low



Rusty drum\_low



Human: Industry-Agriculture



Alfalfa with roots\_low



Alfalfa\_low



Animal Nutrition\_low



Apple\_low



Banana1\_low



Banana2\_low



Banana Bunch\_low



Banana Tree\_low



Barn1\_low



Barn2\_low



Beaver slide hay bailer\_low



Beef-Dairy Farming1\_low



Beef-Dairy Farming2\_low



Center-pivot irrigation\_low



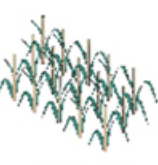
Chicken House\_low



Coconut Palm (Cocos nucifera) low



Corn Cob\_low



Corn-Maize Crop\_low



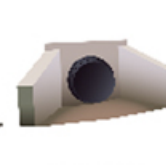
Corn-Maize\_low



Corrugated culvert pipe\_low



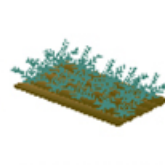
Cotton boll\_low



Culvert\_low



Fencing woodsplitt\_low



Generic Crop\_low



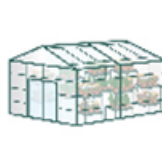
Grain Silos1\_low



Grain Silos2\_low



Grape Vine\_low



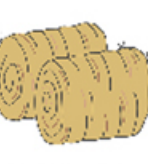
Greenhouse\_low



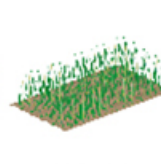
Groundwater extraction and compression\_low



Harvest\_low



Hay Bales\_low



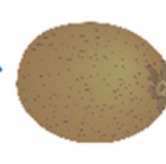
Hay\_low



Helicopter sprayer\_low



Irrigation\_low



Kiwifruit1\_low



Kiwifruit2\_low



Manure composting bunker\_low



Manure Export\_low



Mower\_low



Orange\_low



Orchard\_low



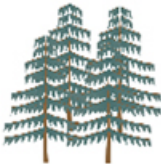
Papaya Tree\_low



Papaya\_low



Pear\_low



Pine Plantation\_low



Pineapple Plantation\_low



Pineapple\_low



Rice\_low



Seedling\_low



Slaughter House-Abattoir\_low



Soybean Oil\_low



Soybeans\_low



Sugarcane1\_low



Sugarcane2\_low



Sugarcane Plantation1\_low



Sugarcane Plantation2\_low



Sweet potato plantation\_low



Sweet potato plot\_low



Taro1\_low



Taro2\_low



Taro plantation\_low



Taro plot\_low



Tractor1\_low



Tractor2\_low



Tractor3\_low



Tractor\_low

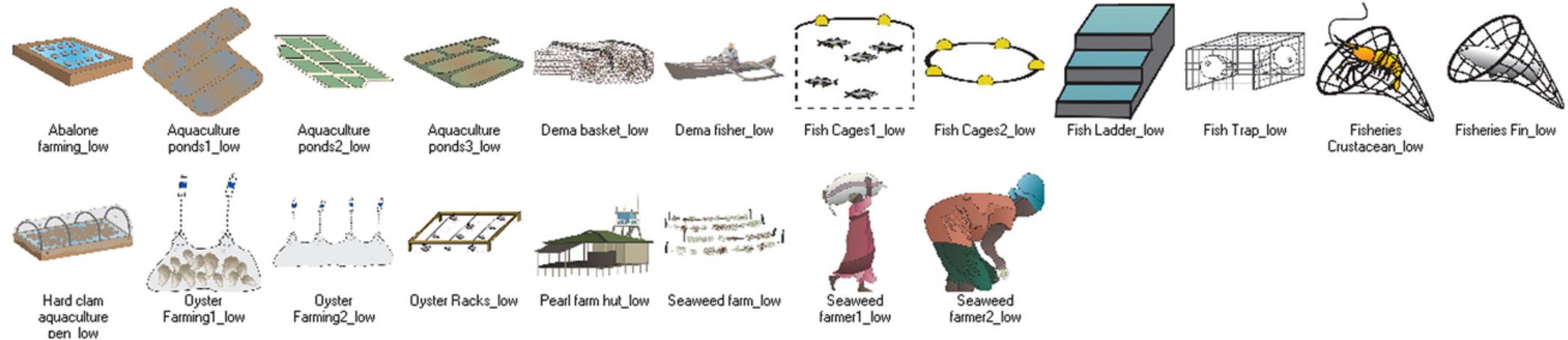


Wheat Sheath\_low

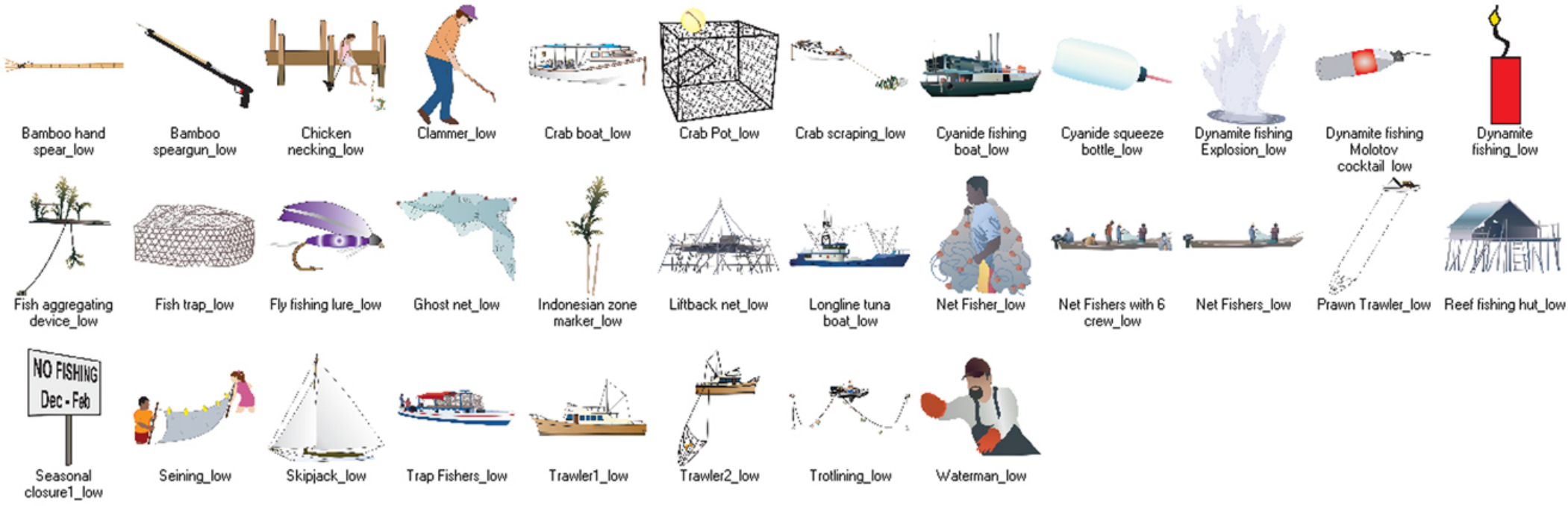


Wheat\_low

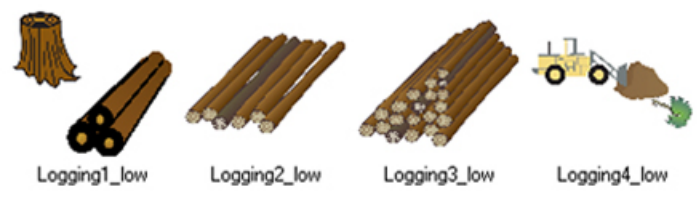
Human: Industry-Aquaculture



Human: Industry-Fishing



Human: Industry-Forestry



Logging1\_low

Logging2\_low

Logging3\_low

Logging4\_low

Human: Industry-Manufacturing and Refining



Asphalt plant\_low



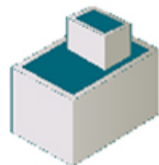
Industry1\_low



Industry2\_low



Manufacturing  
Factory  
buildna1\_low



Manufacturing  
Factory  
buildna2\_low



Manufacturing  
Factory  
buildna3\_low



Manufacturing  
Factory  
buildna4\_low



Manufacturing  
Paper mill\_low



Petroleum Industry  
Oil Refinery\_low

Human: Industry-Mining



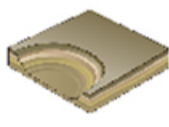
Dredge1\_low



Dredge2\_low



Dredge3\_low



Mining open cut  
mine\_low



Mining Quarry\_low



Mining\_low



Oil Rig\_low



Petroleum Industry  
Oil Rig1\_low



Petroleum Industry  
Oil Rig2\_low



Saltworks\_low

Human: Industry-Services



Fire and Rescue  
Fire engine\_low



Fire and Rescue  
Fire station\_low



Fire management  
crew member with  
drip torch\_low



Hospitality  
Casino\_low



Hospitality Cruise  
ship\_low



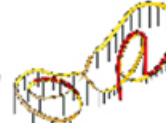
Hospitality  
Eco-resort\_low



Hospitality Ferris  
wheel\_low



Hospitality  
Liveboard dive  
boat\_low



Hospitality Roller  
coaster\_low



Hospitality Seafood  
restaurant\_low



Hospitality Visitor  
center\_low



Retail Downtown  
shopping area\_low



Retail Fish  
market\_low



Wildlife rehabilitation  
center\_low

# Human: Management and Restoration



Anchor damage management\_low



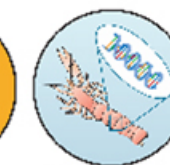
Archaeological site management\_low



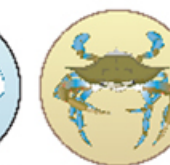
Avalanche control\_low



Backcountry management\_low



Bioindicators\_low



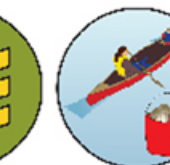
Blue crab management\_low



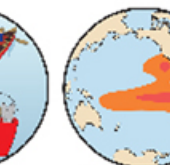
Coastal zone management\_low



Defence force lands\_low



Economic indicators\_low



El Nino Southern Oscillation management\_low



Exotic plant management\_low



Fire management2\_low



Fire management\_low



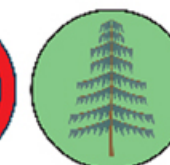
First Nations management (Canada) low



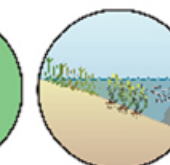
Fisheries management\_low



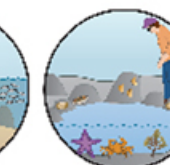
Fishing moratorium\_low



Forestry management\_low



Habitat management\_low



Human access management\_low



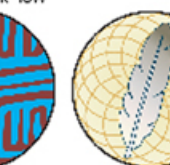
Immigration control\_low



Indigenous management (Australia) low



Indigenous management (Kuna Panama) low



Indigenous management (Native American)



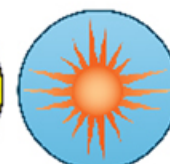
Indigenous management (New Zealand) low



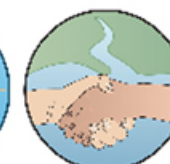
International obligations and treaties low



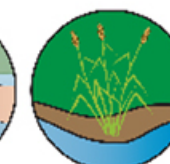
Introduced species management\_low



Kyoto Protocol\_low



Linking science and management\_low



Marsh restoration\_low



No take zone\_low



Oyster restoration\_low



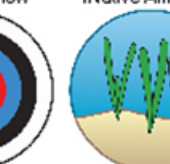
Poorly understood systems\_low



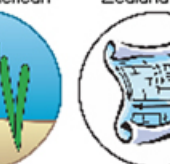
Port authorities\_low



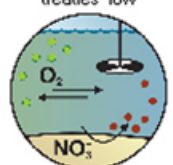
Regional level initiatives\_low



Seagrass restoration\_low



State level planning initiatives\_low



Water quality management\_low



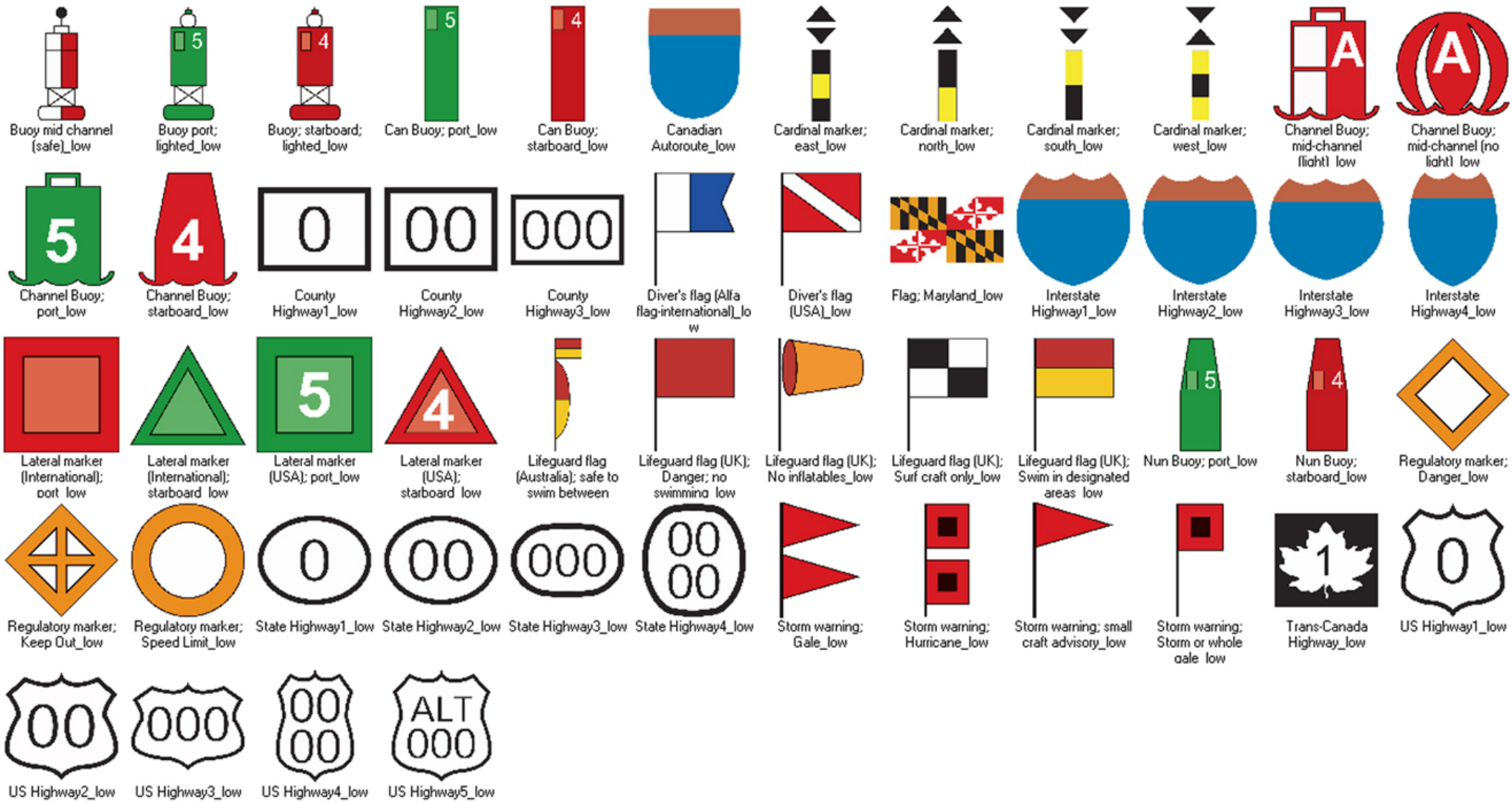
Water resource management\_low



Watershed management\_low



# Human: Mapping and Navigation



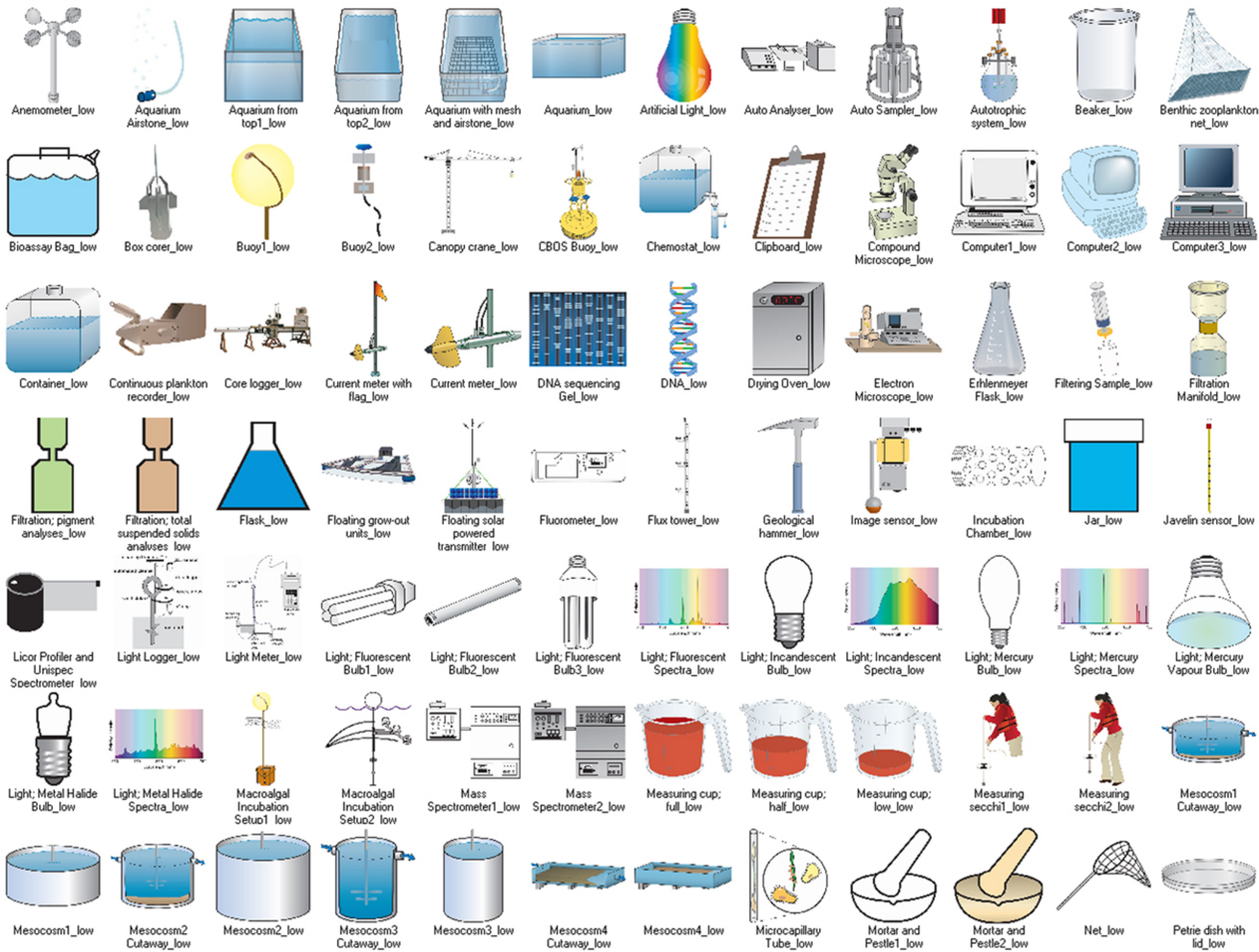
Human: Other

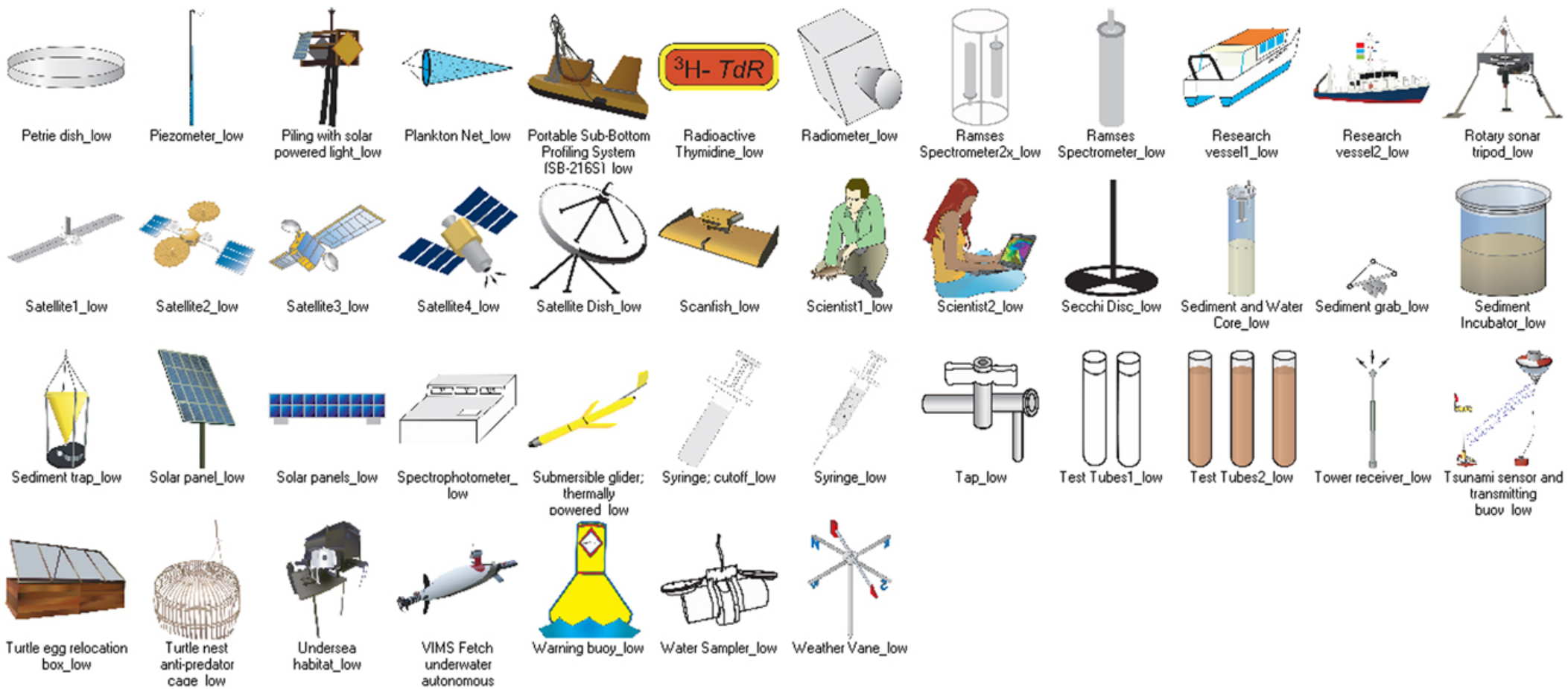


# Human: Recreation

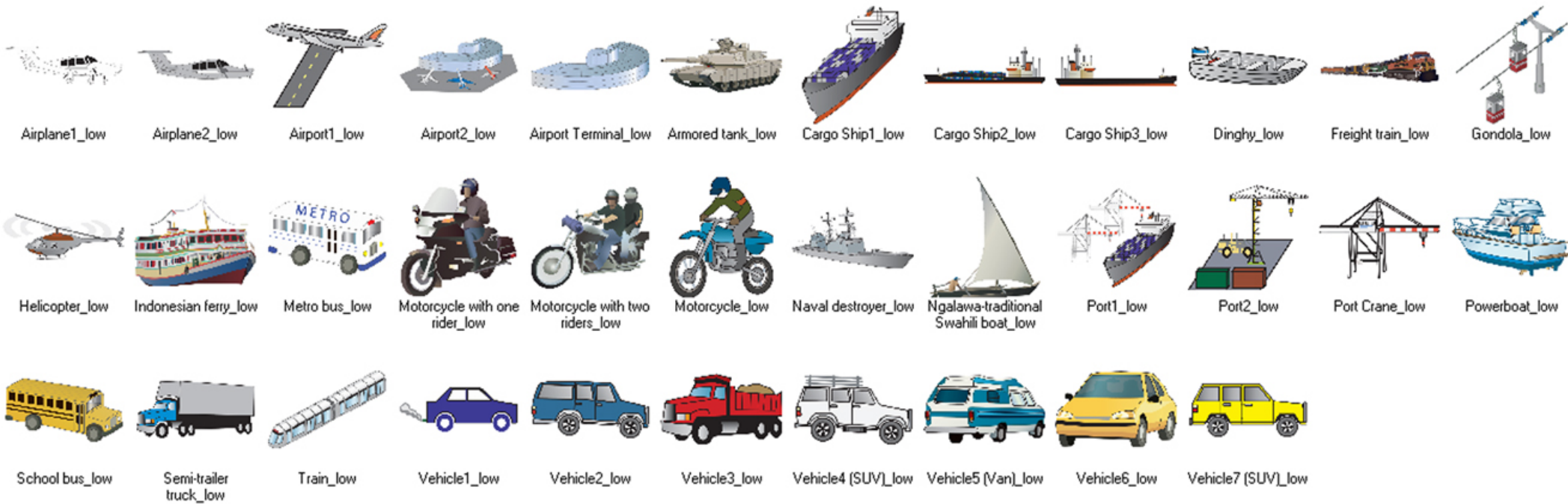


# Human: Science and Research

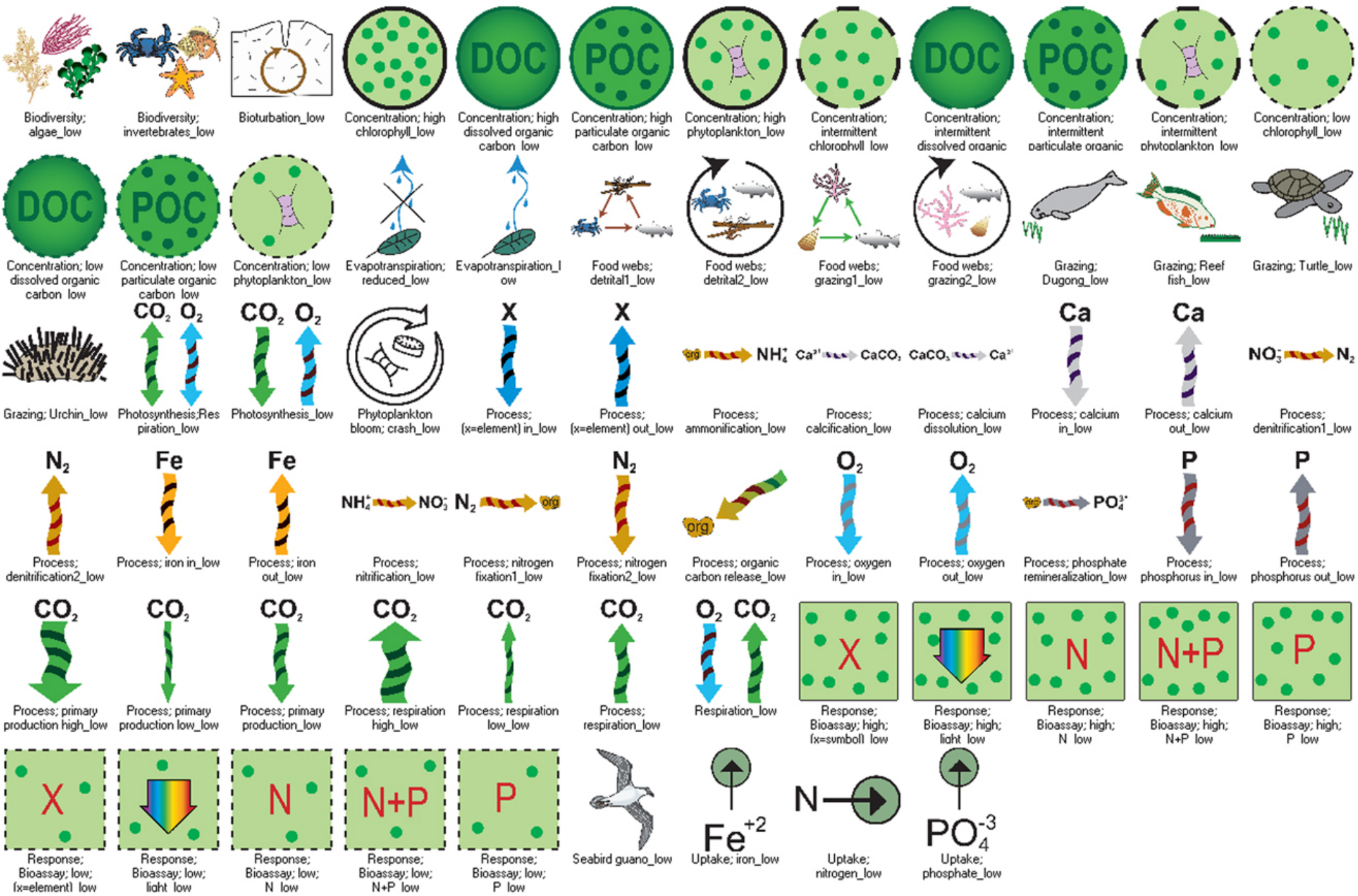




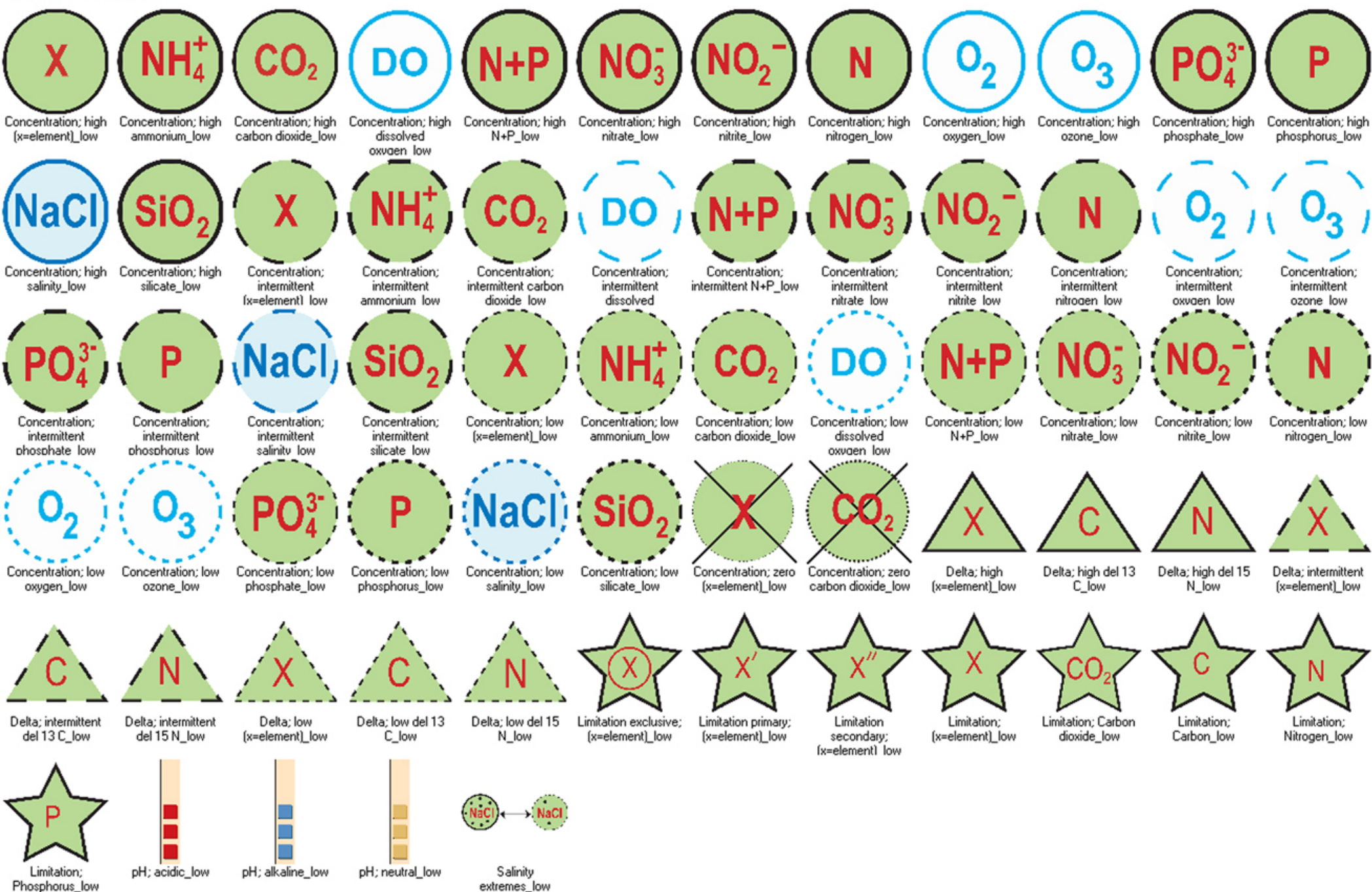
# Human: Transport



Processes: Biological

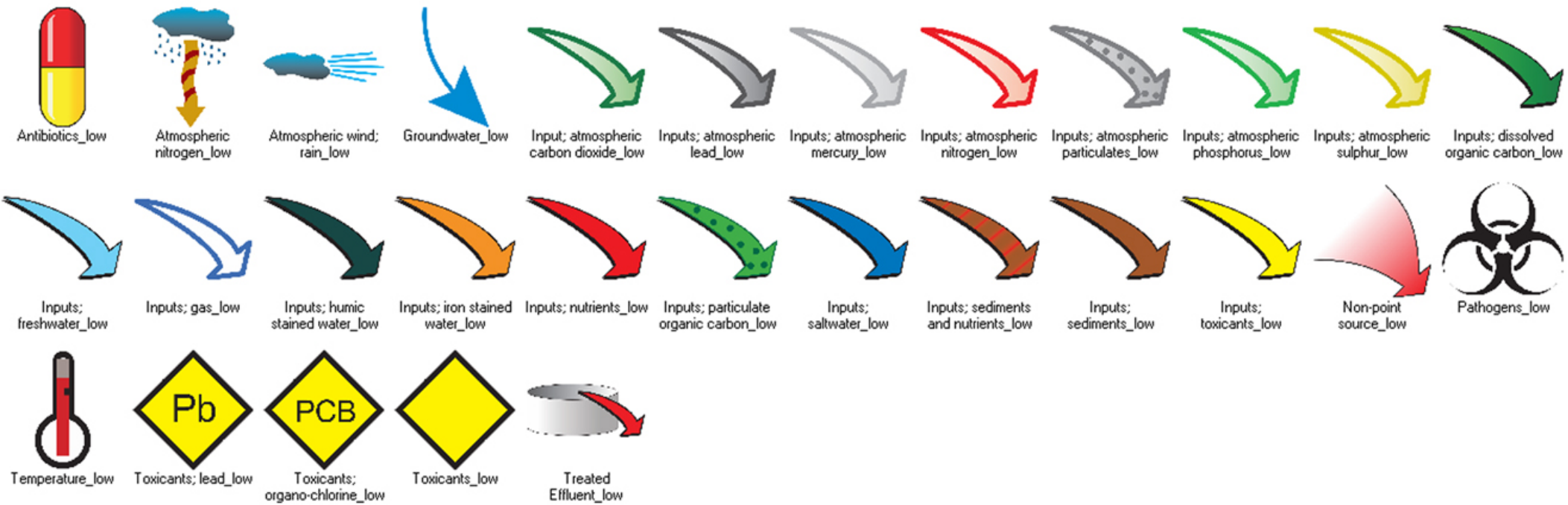


Processes: Chemical





# Processes: Inputs and Flows



Processes: Modifiers



Certainty\_low



Dynamic\_low



Female symbol\_low



High Certainty\_low



High  
Uncertainty\_low



Introduced  
species1\_low



Introduced  
species2\_low



Male symbol\_low



Negative\_low



Positive\_low



Potentially  
Negative\_low



Potentially  
Positive\_low

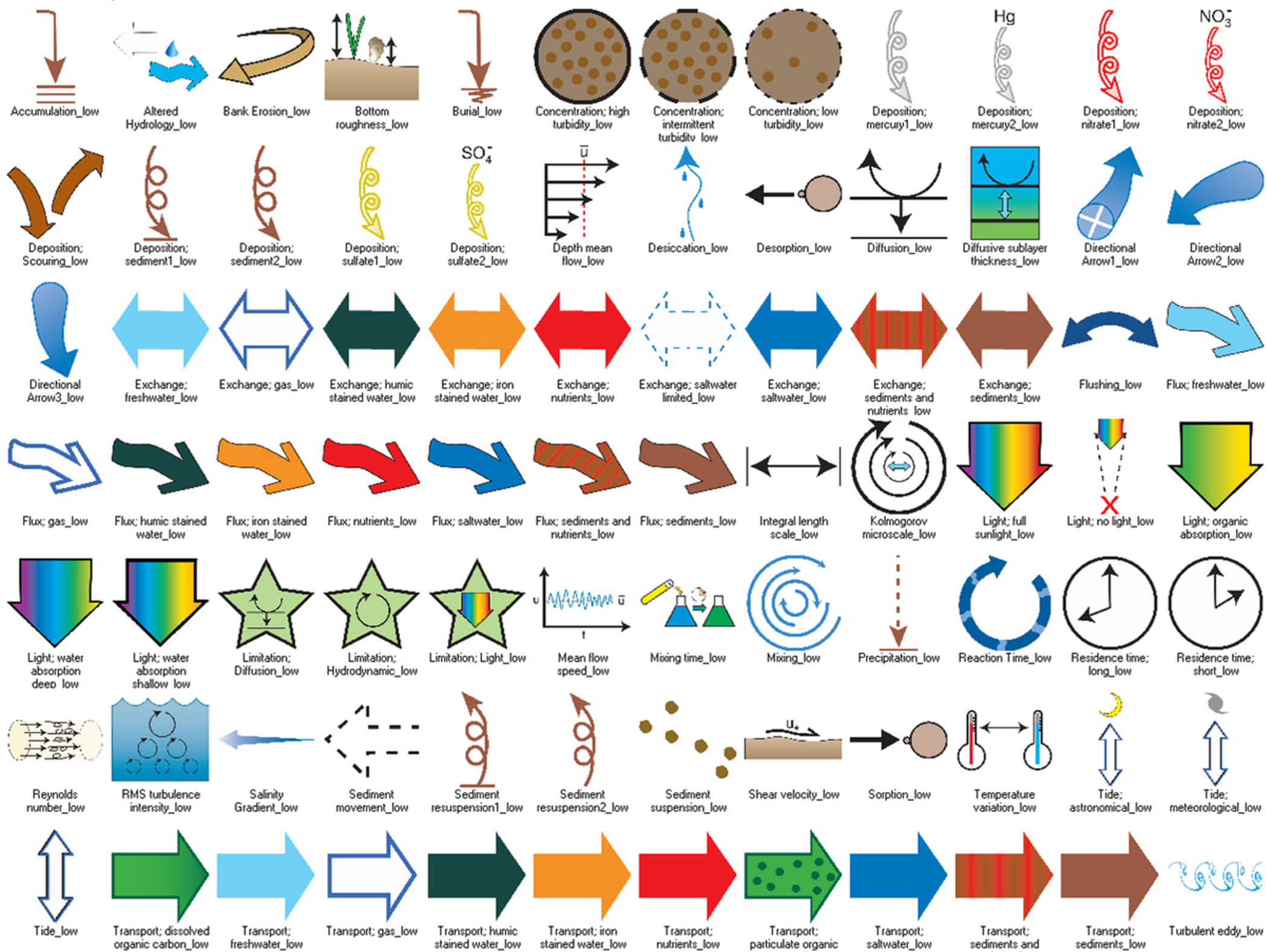


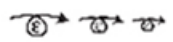
Uncertainty1\_low



Uncertainty2\_low

Processes: Physical

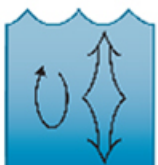




Turbulent energy  
dissipation rate\_low



Upwelling\_low



Vertical eddy  
diffusivity\_low



Volatilization\_low

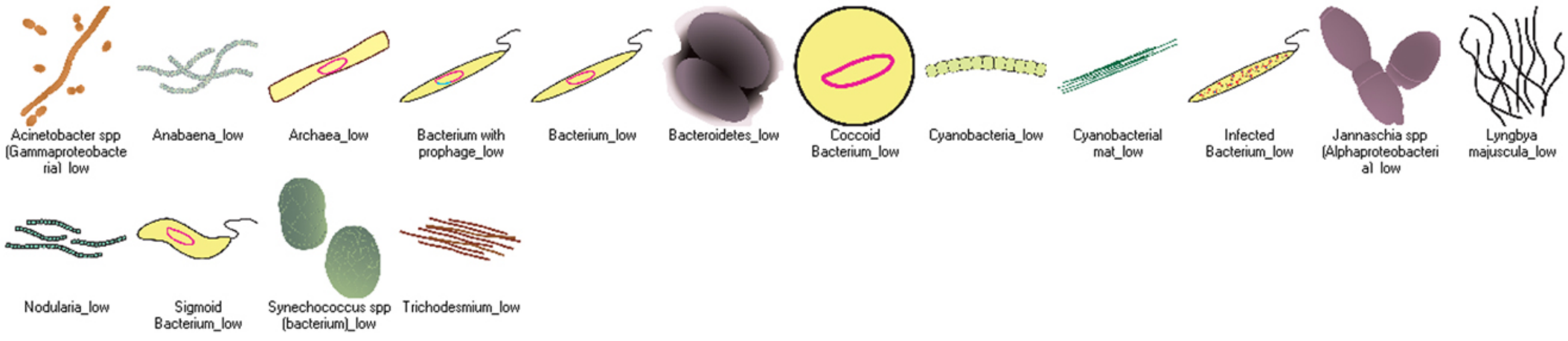


Wake  
turbulence\_low



Wave Energy\_low

# Prokaryotes and Viruses: Bacteria and Cyanobacteria



Prokaryotes and Viruses: Viruses

