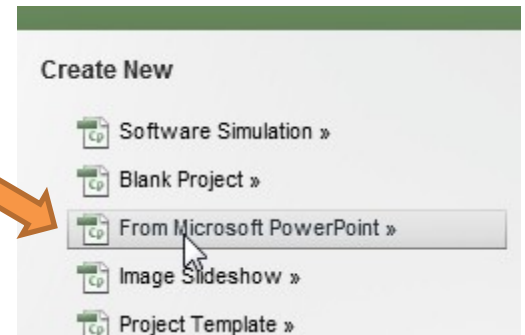
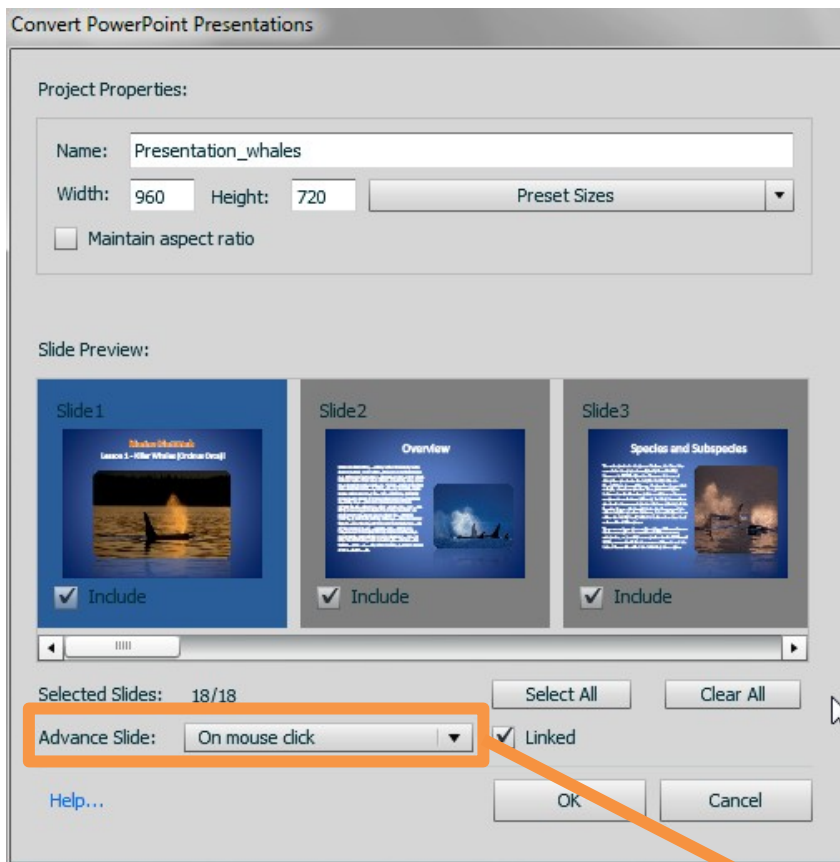


How to Create a Looping Flash (SWF) Slideshow in Adobe Captivate from a PowerPoint Presentation

1. Start Adobe Captivate. (*It is on the computer workstation in KREATE.*)
2. On the Captivate Start page, click From Microsoft PowerPoint
3. Browse to the folder that contains your PowerPoint presentation, select it, and click Open.



Note: A progress bars shows the PowerPoint presentation being loaded. This may take a few minutes, depending on the size of the presentation.



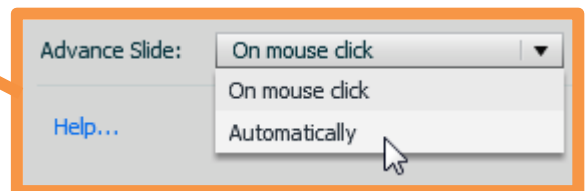
4. Enter a title for the project in the Name box.

The width and height is based on the slides being imported. You can change this, but it's best to match the original slides.

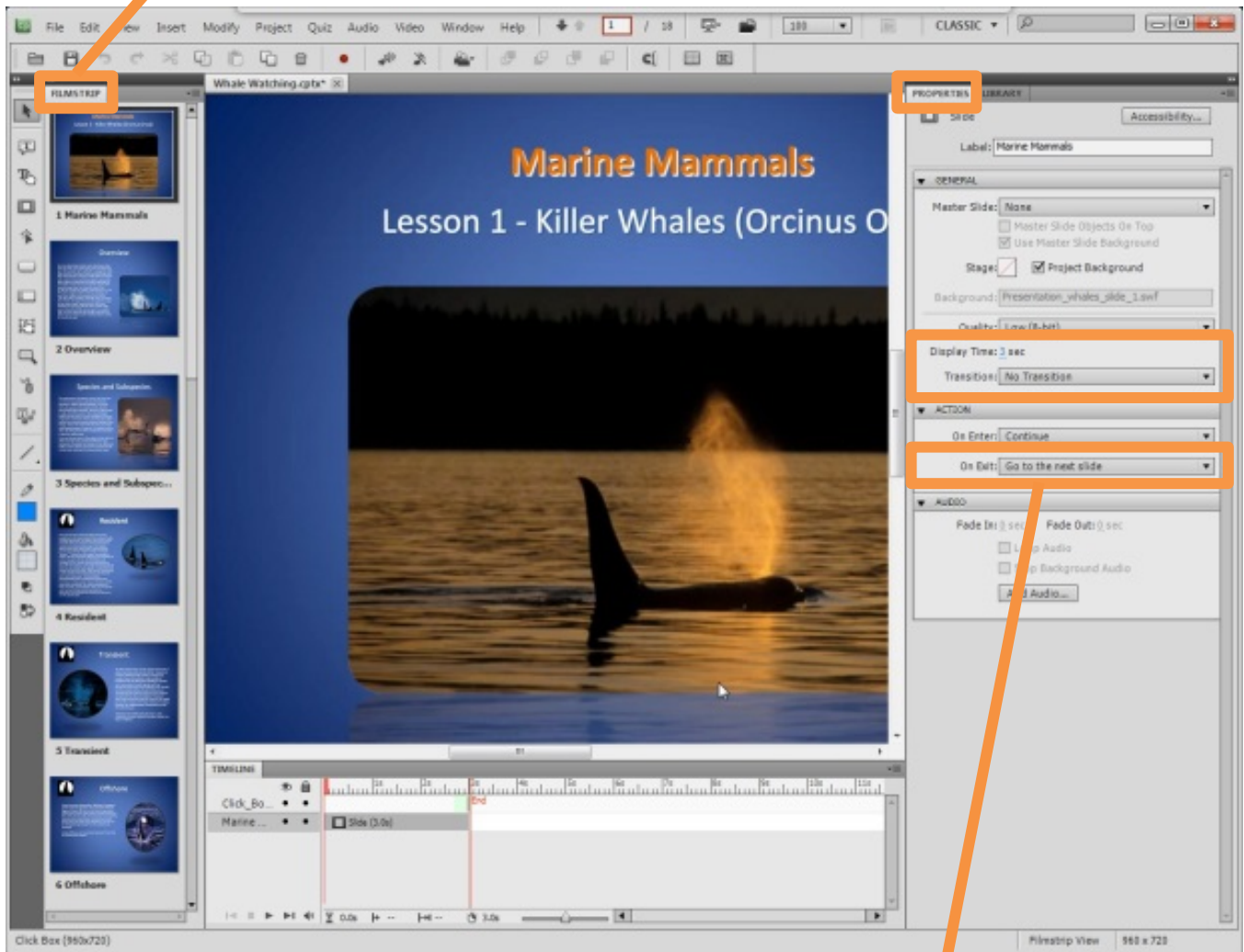
By default, every slide is selected for import. To omit a slide, deselect its check box.

5. In order for your slides to advance automatically choose Advance Slide: Automatically.

6. Click OK. Save and name the project.



7. Under the Properties Tab, adjust the Display Time and the Transition as necessary for each slide. You can make adjustments to multiple slides at one time. While holding down the Ctrl key, click on the slides under the Filmstrip Tab that you wish to select and then make your adjustments.



8. Select your last slide under the Filmstrip Tab. Under the Action section in the Properties Tab, select On Exit: Jump to Slide. Slide: 1 Slide 1 will automatically be selected for you. This will loop your slideshow.
9. Publish your project by selecting Publish under the File Menu in the header.
10. Ensure Flash (SWF) is selected on the left slide. Enter a Project Title and browse to a location where you would like to save your published project files.
11. Click Publish. If prompted to create a new folder, click Yes.
12. Click View Output to view the project in a web browser.
13. Open the folder you selected for publishing. This folder contains the Flash (SWF) file. Congratulations! You did it!