



NOAA
FISHERIES

WEST
COAST
REGION

Columbia Basin Partnership

Initial information on current
status and conditions

Michael Tehan
February 17, 2016

Conceptual Steps for Columbia Basin Partnership

Compile Existing Information

- Existing goals
- Current status and trends
- Current conditions

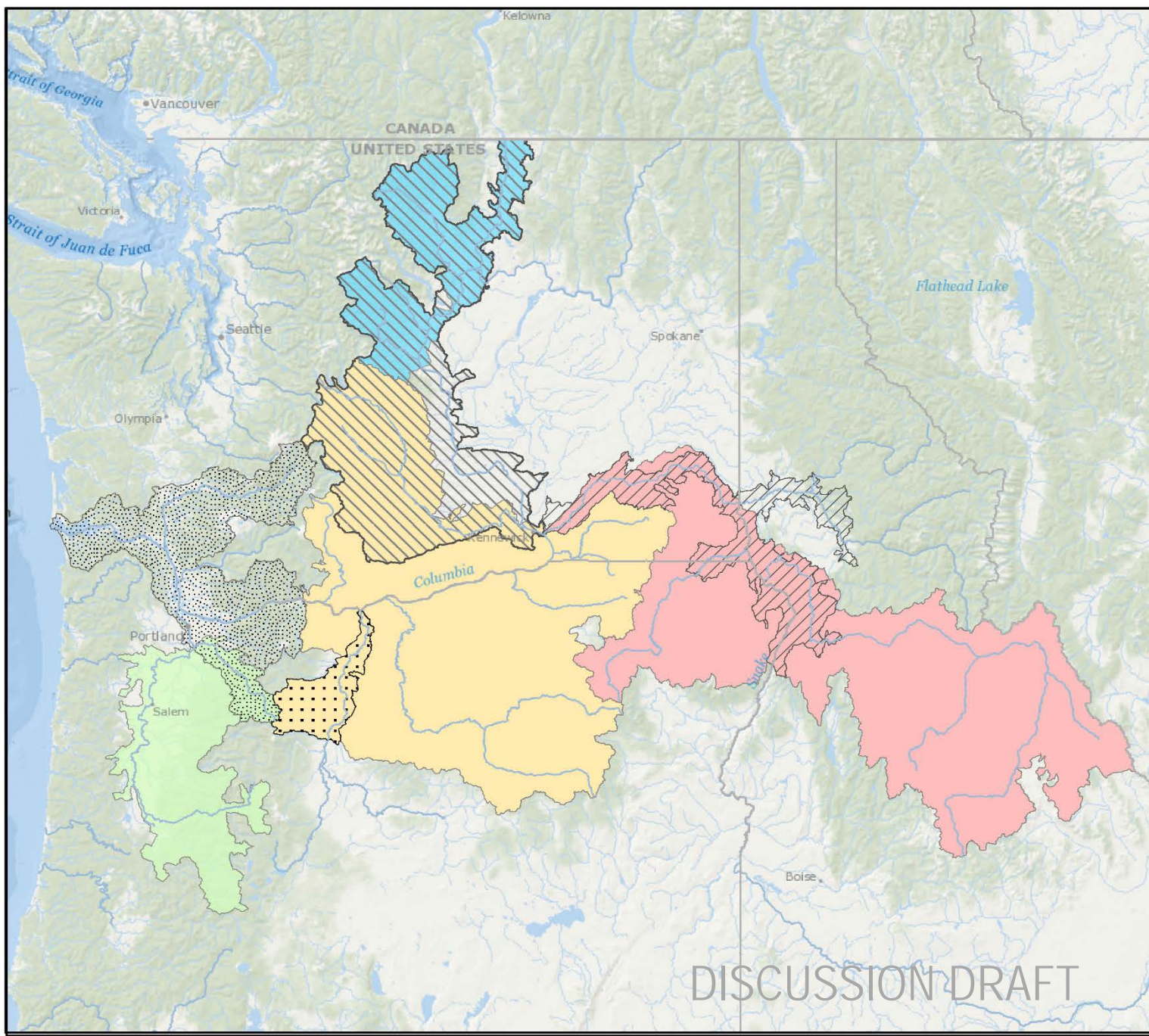
Moving Forward

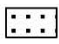






- Identify key questions to guide discussions
- Discuss and develop principles for conservation and harvest
- Develop analytical approach
- Establish technical teams

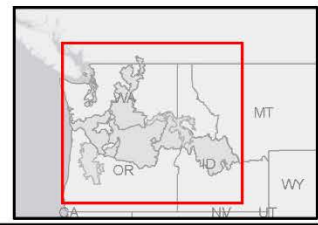
Numerical Goals

- Harvest goals in each fishery, by species
- Natural escapement goals, by species
- Hatchery escapement goals by species

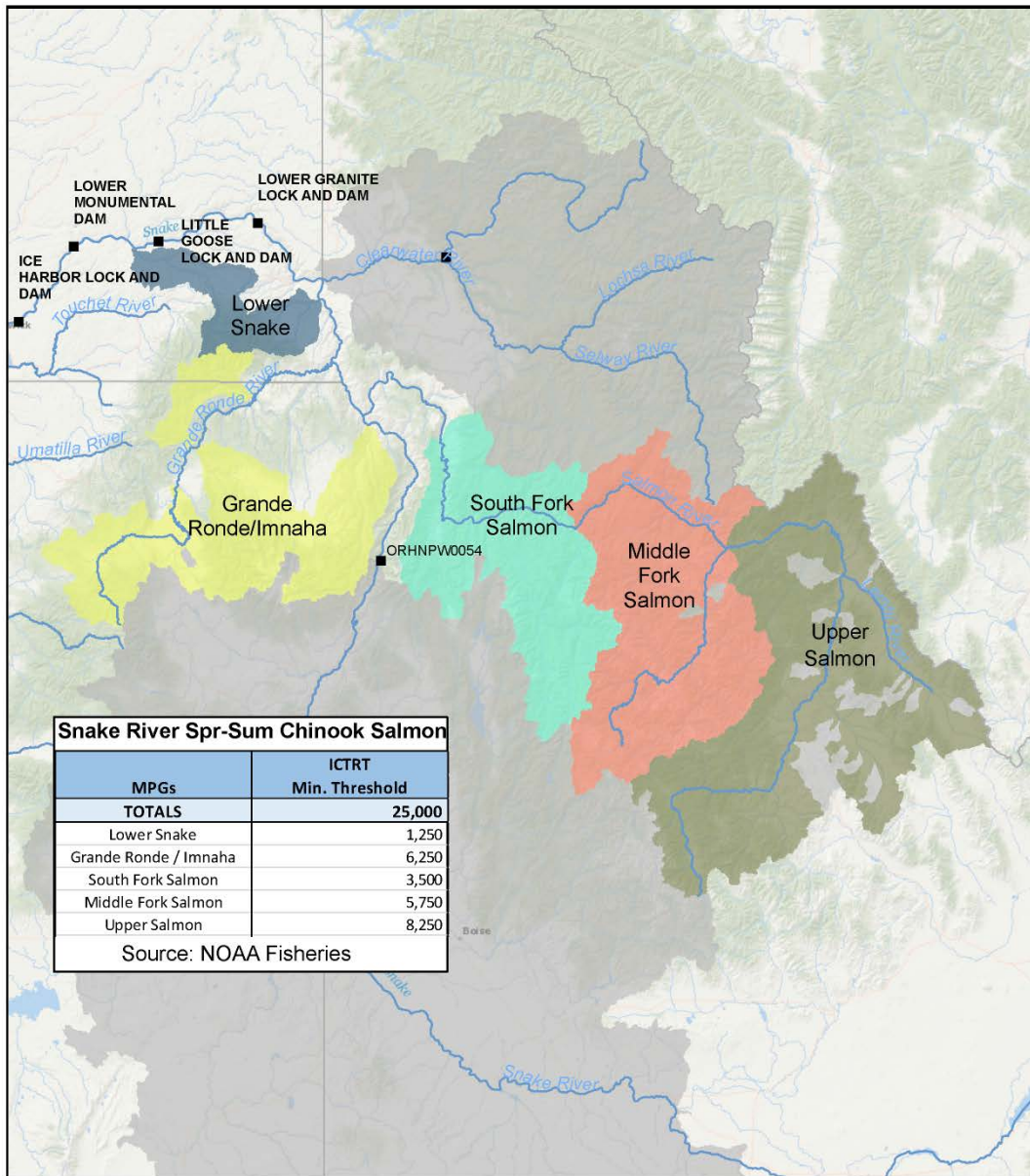
Chinook Salmon ESU Boundaries



- Rivers
-  Deschutes River Summer/Fall-run Chinook Salmon - Not Warranted
-  Snake River Fall-run Chinook Salmon - Threatened
-  Upper Columbia River Summer/Fall-run Chinook Salmon - Not Warranted
-  Lower Columbia River Chinook Salmon - Threatened
-  Upper Columbia River Spring-run Chinook Salmon - Endangered
-  Snake River Spring/Summer-run Chinook Salmon - Threatened
-  Upper Willamette River Chinook Salmon - Threatened
-  Mid-Columbia River Spring-run Chinook Salmon - Not Warranted



DISCUSSION DRAFT



Snake River Spr-Sum Chinook Salmon

MPGs	ICTRT Min. Threshold
TOTALS	25,000
Lower Snake	1,250
Grande Ronde / Imnaha	6,250
South Fork Salmon	3,500
Middle Fork Salmon	5,750
Upper Salmon	8,250

Source: NOAA Fisheries



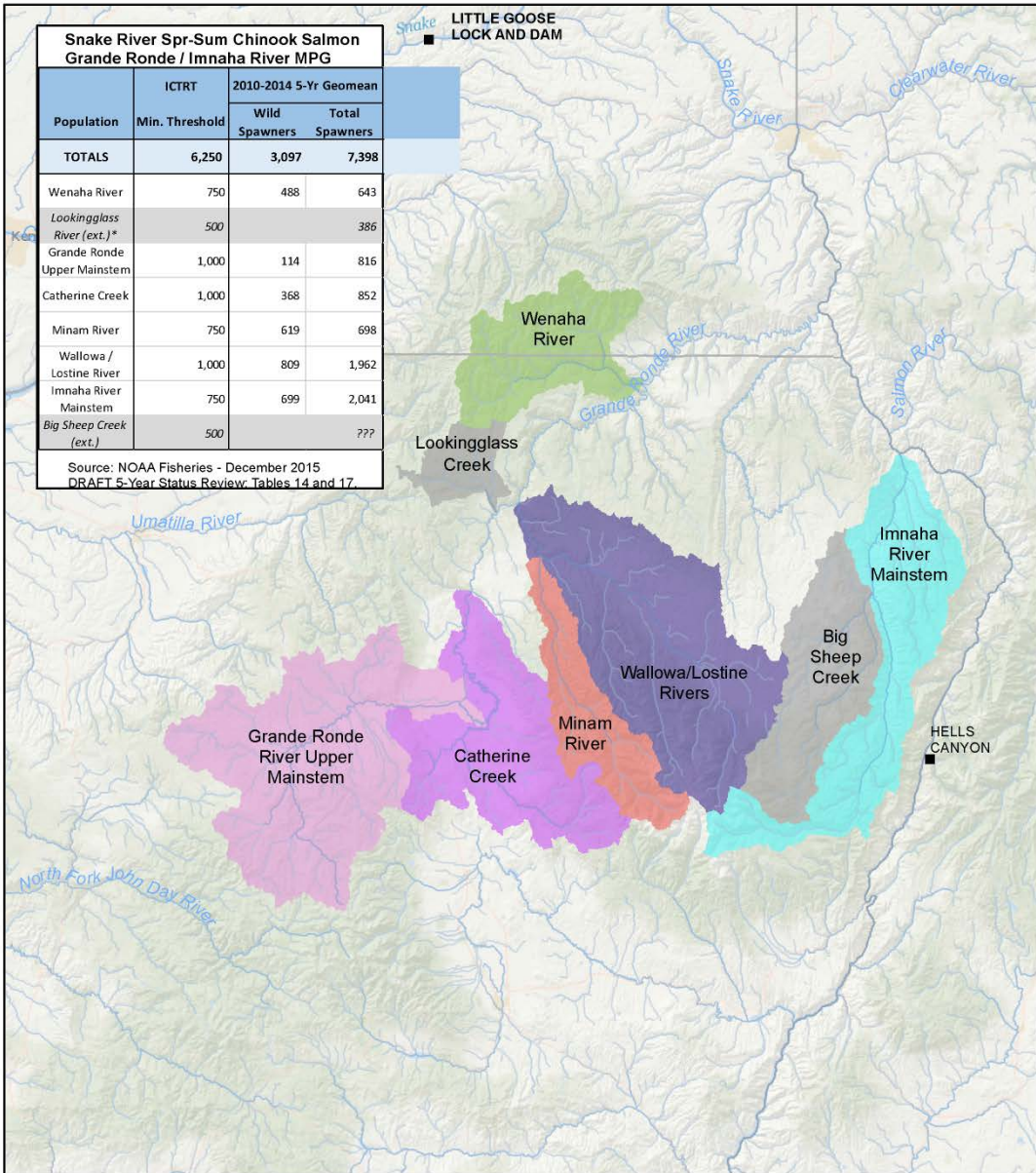
Snake River Spring/Summer Chinook Salmon ESU

- Dams
- Rivers
- Lower Snake
- Grande Ronde/Imnaha
- South Fork Salmon
- Middle Fork Salmon
- Upper Salmon
- Extirpated



Snake River Spr-Sum Chinook Salmon Grande Ronde / Imnaha River MPG			
Population	ICTRT Min. Threshold	2010-2014 5-Yr Geomean	
		Wild Spawners	Total Spawners
TOTALS	6,250	3,097	7,398
Wenaha River	750	488	643
Lookingglass River (ext.)*	500		386
Grande Ronde Upper Mainstem	1,000	114	816
Catherine Creek	1,000	368	852
Minam River	750	619	698
Wallowa / Lostine River	1,000	809	1,962
Imnaha River Mainstem	750	699	2,041
Big Sheep Creek (ext.)	500		???

Source: NOAA Fisheries - December 2015
DRAFT 5-Year Status Review, Tables 14 and 17.



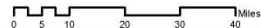
Snake River Spring/Summer Chinook Salmon

Grande Ronde/Imnaha MPG

Current Populations

- Imnaha River Mainstem **Extirpated**
- Minam River
- Catherine Creek
- Wallowa/Lostine Rivers
- Grande Ronde River Upper Mainstem
- Wenaha River

- Big Sheep Creek
- Lookingglass Creek
- Rivers



DISCUSSION
DRAFT

Summary of Recovery Goals for Grande Ronde MPG of Snake River Spring/Summer Chinook Salmon

DISCUSSION DRAFT

Plan/Objectives	Escapement Goals	
	Natural Escapement ^a	Total Return (including Harvest & Natural Escapement)
<i>NOAA's Endangered Species Act Recovery Plan (proposed):</i>		
Grande Ronde/Imnaha MPG	5,750 ^b	n/a
<i>Washington's Broad Sense Recovery Goals</i>		
Wenaha River	n/a	1,335
<i>Northwest Power & Conservation Council Subbasin Plans:</i>		
Grande Ronde & Imnaha Subbasins	8,800-16,200	>10,740 - 21,740
<i>Wy-Kan-Ush-Mi Wa-Kish-Wit:</i>		
Grande Ronde & Imnaha Subbasins	n/a	21,740
<i>Nez Perce Tribe Fisheries Resources Management Plan:^f</i>		
Grande Ronde & Imnaha Subbasins		
Viable abundance threshold	6,000	n/a
Sustainable escapement	n/a	22,300
Ecological escapement	n/a	157,000
<i>Lower Snake River Compensation Plan:</i>		
Grande Ronde & Imnaha Rivers	9,030	45,150

^a Natural escapement may have been defined differently, in terms of natural-versus hatchery original parentage, by each planning group.
^b Sum of Minimum Abundance Thresholds (MAT)

Columbia River Basin Objectives - MPG

Topic

Objectives

Maps

Subbasin



Chinook Steelhead Coho Chum Sockeye

Run All



1 Dry Clearwater (ss)



2 Grande Ronde-Imnaha (ss)



3 Grande Ronde-Imnaha (fa)



4 Middle Fork Salmon (sp)



5 Upper Salmon (sp)



6 Lower Snake (fa)



7 Lower Snake (sp)



8 Wet Clearwater (ss)



9 South Fork Salmon (sp)



10 Wenatchee-Methow (sp)



11 Wenatchee-Methow (su)



12 Wenatchee-Methow (fa)



Grande Ronde-Imnaha (ss)

Grande Ronde-Imnaha Spring/Summer MPG

Abundance Objectives for Natural-Origin Adult Salmon and Steelhead

About the MPG

ESU: Snake River spring/summer-run ESU

MPG: Grande Ronde-Imnaha

Run: Spring/Summer

Populations (run): Big Sheep Creek (spr), Catherine Creek (spr), Grande Ronde River Upper Mainstem (spr), Minam River (spr), Wallowa/Lastine Rivers (spr), Wenaha River (spr), Imnaha River Mainstem (spr-sum), Lookinglass Creek (unk)

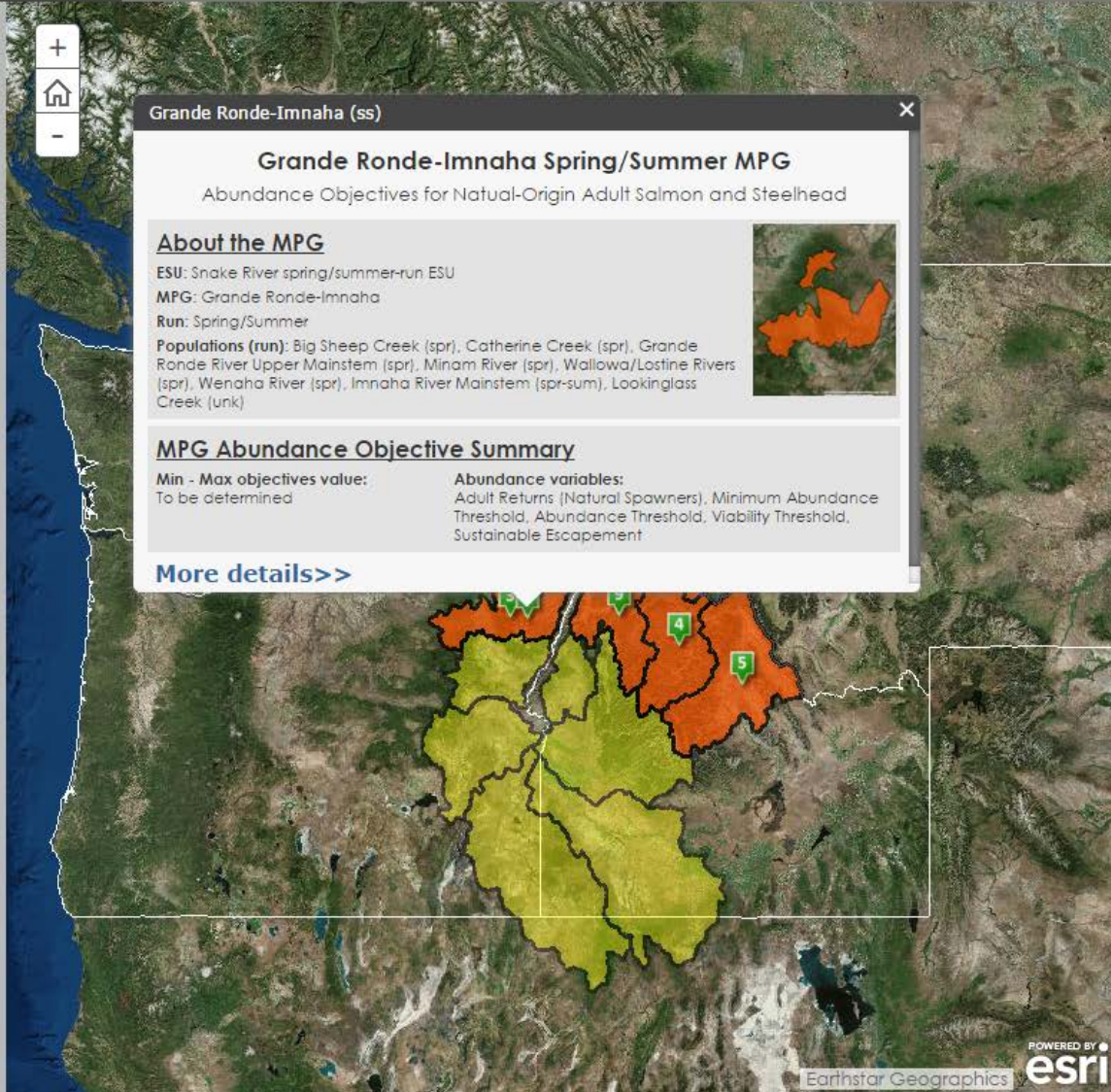


MPG Abundance Objective Summary

Min - Max objectives value:
To be determined

Abundance variables:
Adult Returns (Natural Spawners), Minimum Abundance Threshold, Abundance Threshold, Viability Threshold, Sustainable Escapement

[More details >>](#)



DISCUSSION DRAFT



Examples of other information:

- Hatchery programs and production levels
- Habitat condition and capacity
- Harvest rates
- Hydro system survival

Small Group Discussion Questions

- Setting the Stage: Information on existing goals, population structure/scale, current species status
 - What additional information would be useful?
 - Do you agree with using the MPG scale? If not, are there alternative suggestions?
- Aligning regional goals: How to structure the regional dialogue?
 - Key questions that are relevant to developing common fish recovery goals?