



**NOAA**  
**FISHERIES**

# Cumulative Discard Methodology in the Atlantic Sea Scallop (*Placopecten magellanicus*) Fishery

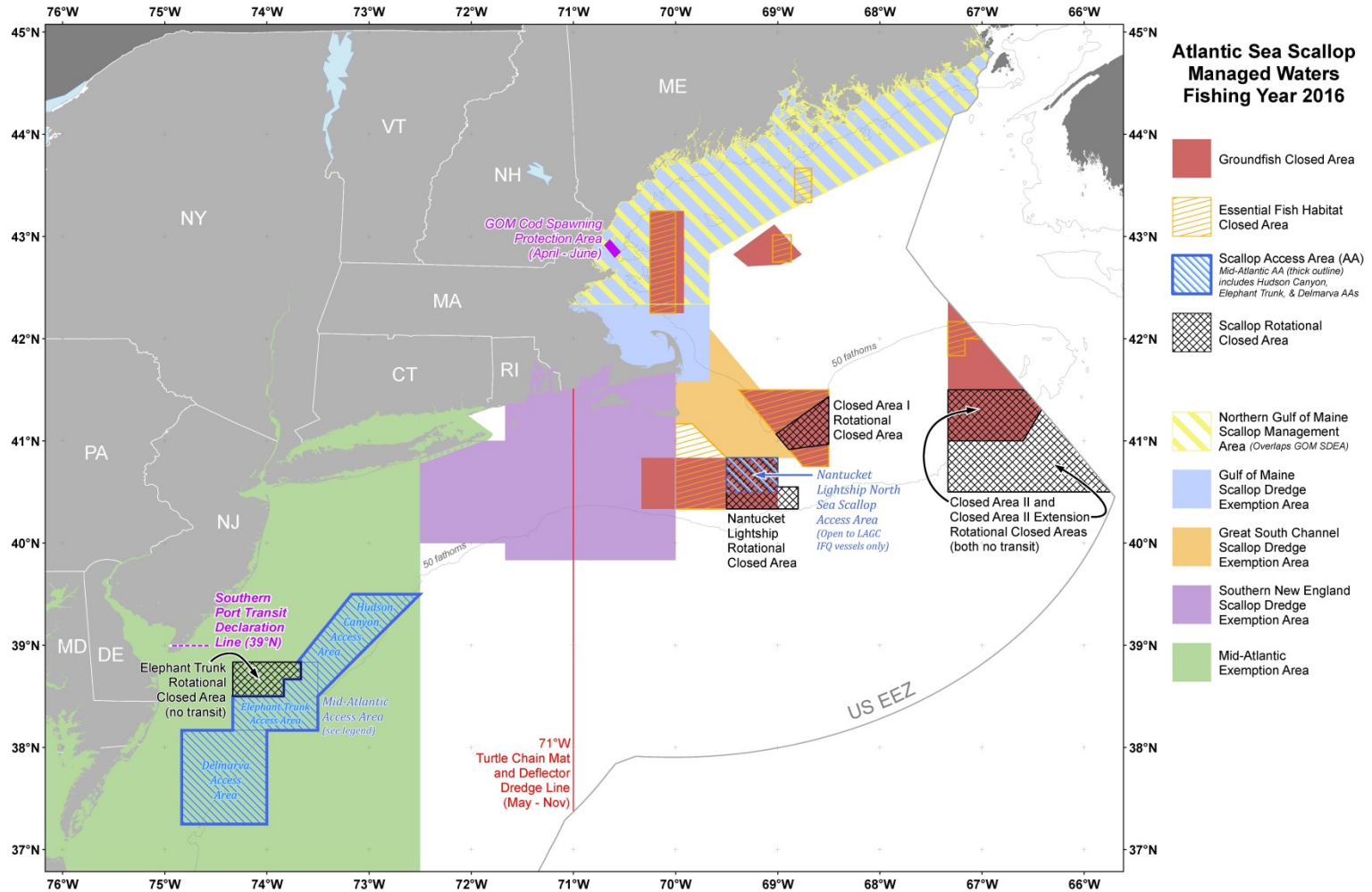
**Benjamin Galuardi**

**Analysis and Program Support  
Greater Atlantic Regional Fisheries Office**

*[Benjamin.galuardi@noaa.gov](mailto:Benjamin.galuardi@noaa.gov)*

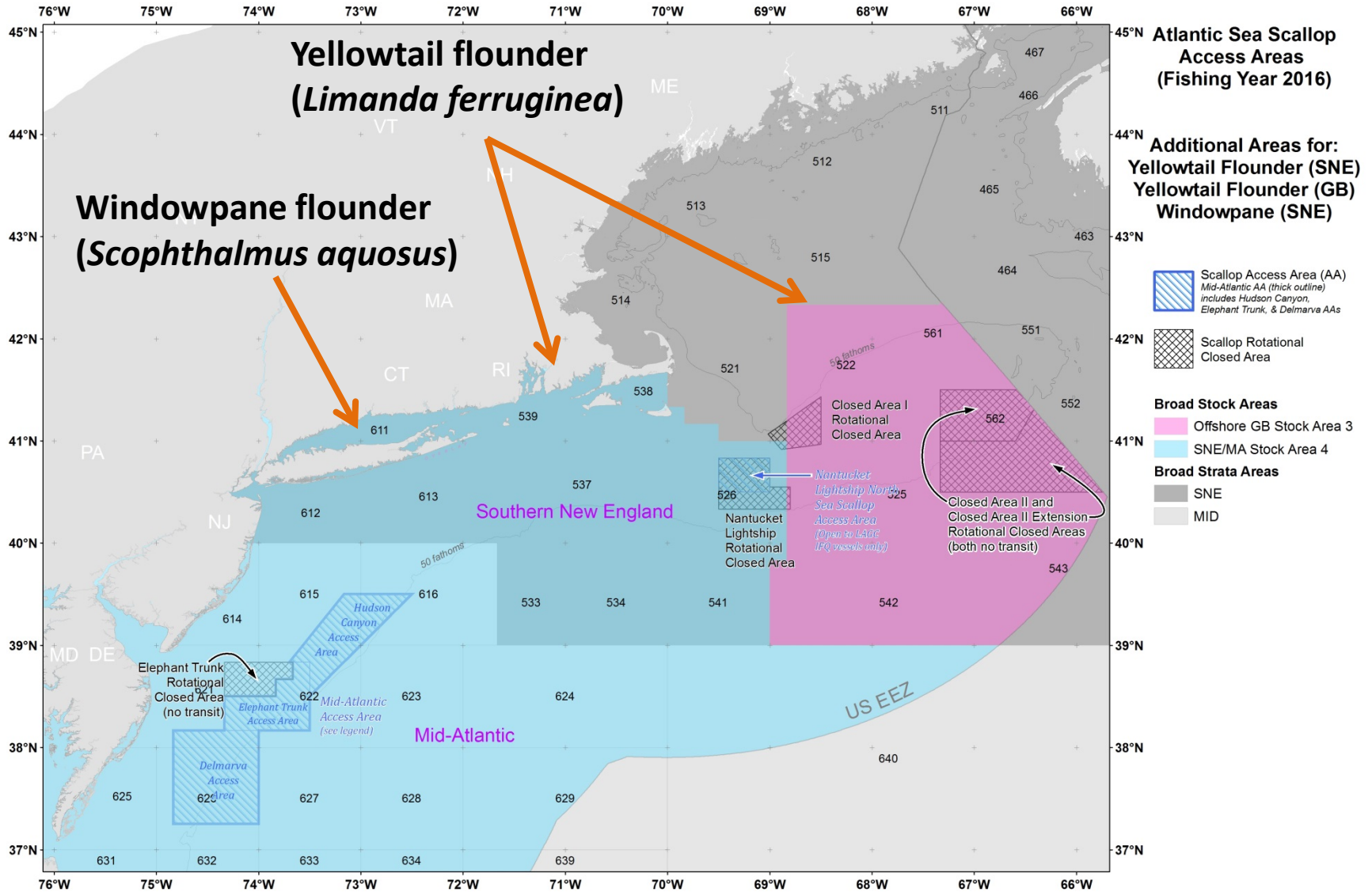
*This information is distributed solely for the purpose of predissemination peer review. It has not been formally disseminated by NOAA. It does not represent any final agency determination or policy.*

# The Scallop fishery



Map credit: Dean Szumylo, GARFO

# Bycatch monitoring



# Baseline Stratification

Area	Fleet	Gear
Closed Area I <i>(GB)</i>	Limited Access	Dredge
Closed Area II <i>(GB)</i>	General Category	Trawl
Nantucket Lightship <i>(SNE/MA)</i>		
Open Area $\leq 613$ <i>(SNE/MA and GB)</i>		
Open Area $\geq 614$ <i>(SNE/MA)</i>		

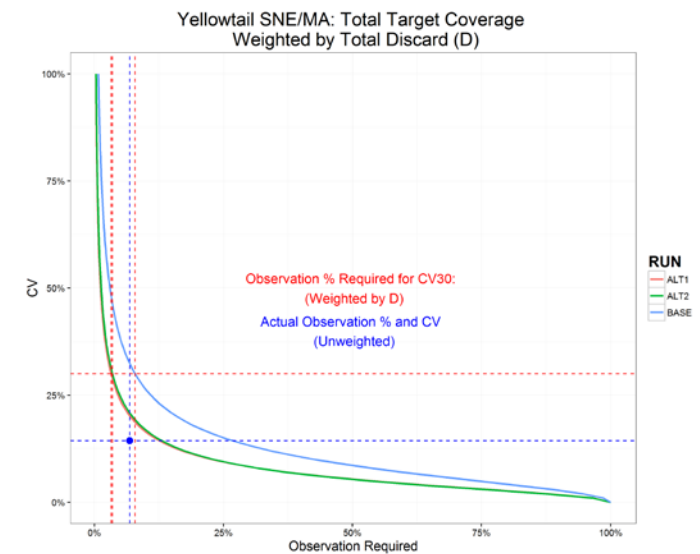
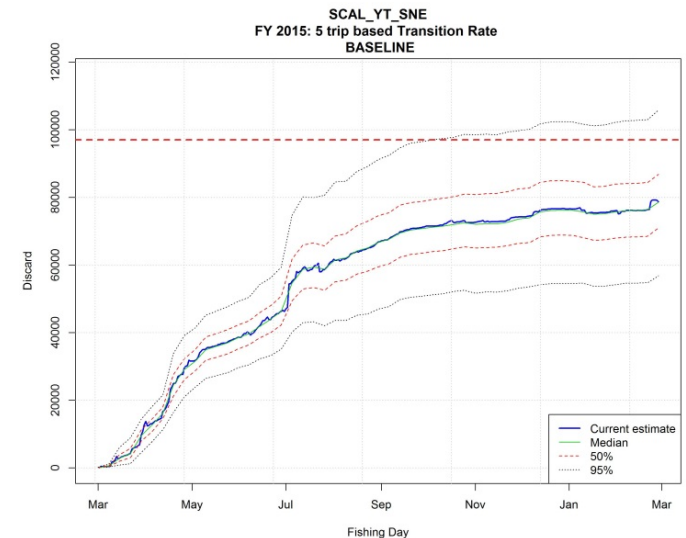
Broad Stock Areas: *SNE/MA* *GB*

# Analysis Parameters

- Time
  - 2015 Fishing Year (March 1, 2015 – Feb 29, 2016)
- Stratification
  - Baseline
  - Gear only
  - Gear and Area
    - no separate rate for Access Areas
- Transition Rate
  - 5 trip
  - 365 day moving average

# Products

- Simulated discard over a year (18 simulations)
- Probability of cap exceedance
  - First day
  - Last day of fishing year
- Target coverage for CV range



**Please tune in next week for...**

**Cumulative Discard Methodology Peer  
Review**

**Nov 7-9 , 2016**

**Greater Atlantic Regional Office**

**55 Great Republic Drive**

**Gloucester, MA**