

OE ENERGY MARKET SNAPSHOT

West Version –Data through October 2016

Office of Enforcement
Federal Energy Regulatory Commission
November 2016



Natural Gas and Fuels Markets

West

West Day Ahead Natural Gas Prices Averaged Annually/Seasonally

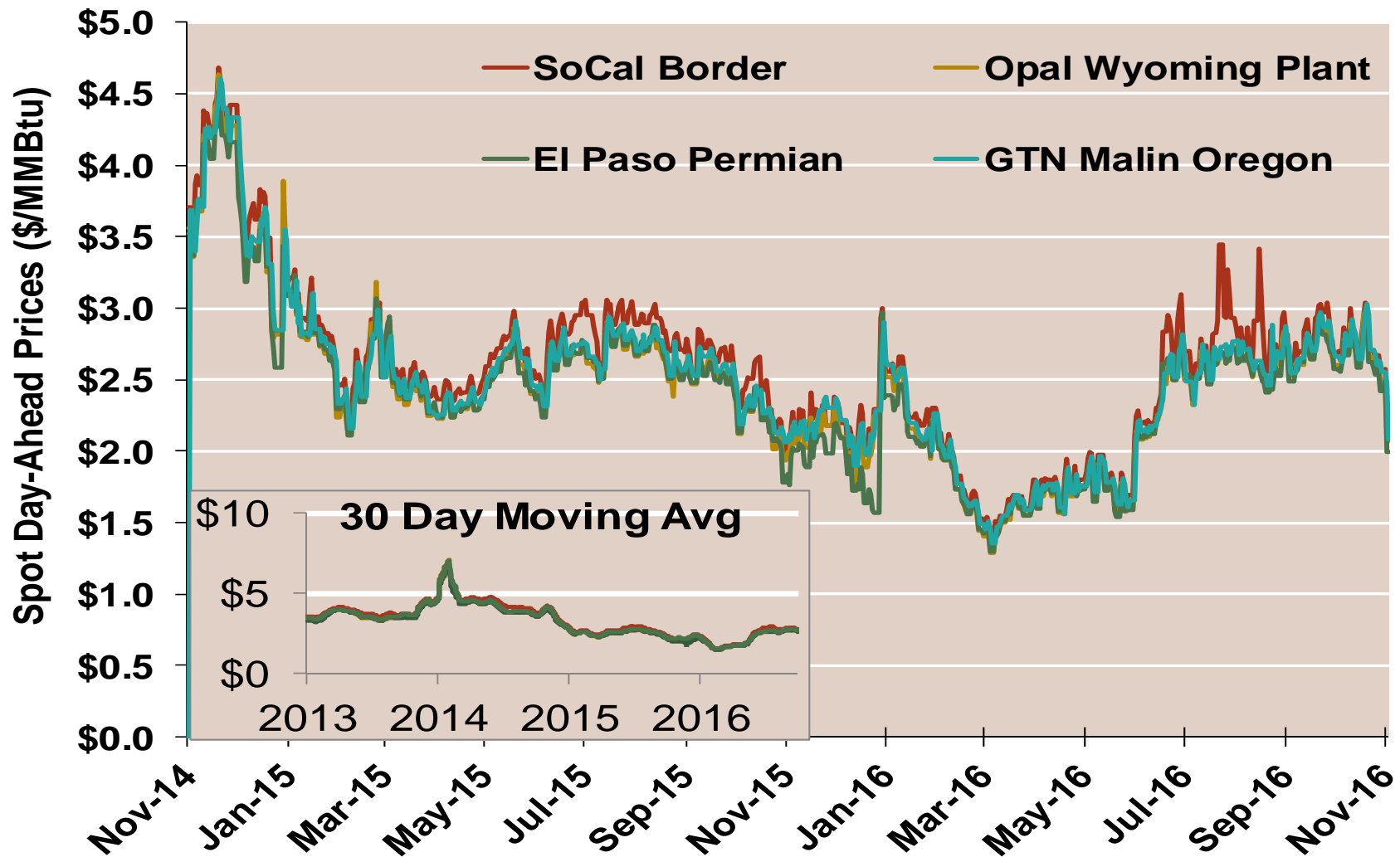
	Average Day Ahead Prices (\$/MMBtu)	SoCal Border	Opal Wyoming Plant	El Paso Permian	GTN Malin Oregon	Henry Hub
2013	Annual	3.83	3.65	3.63	3.71	3.72
	Summer	3.82	3.61	3.63	3.67	3.76
	Winter 2013/2014	4.89	4.88	4.68	4.88	4.61
2014	Annual	4.50	4.35	4.26	4.39	4.32
	Summer	4.34	4.07	4.07	4.14	4.18
	Winter 2014/2015	3.15	3.03	3.01	3.06	3.21
2015	Annual	2.60	2.46	2.44	2.51	2.60
	Summer	2.67	2.51	2.51	2.56	2.67
	Winter 2015/2016	2.04	1.96	1.88	2.01	1.97
2016 YTD	Annual	2.31	2.19	2.18	2.23	2.38
	Summer	2.47	2.34	2.33	2.38	2.55
	Winter 2016/2017	2.23	2.08	1.99	2.08	2.53

Notes:

Source: ICE

Updated Nov-2016

West Daily Day-Ahead Prices

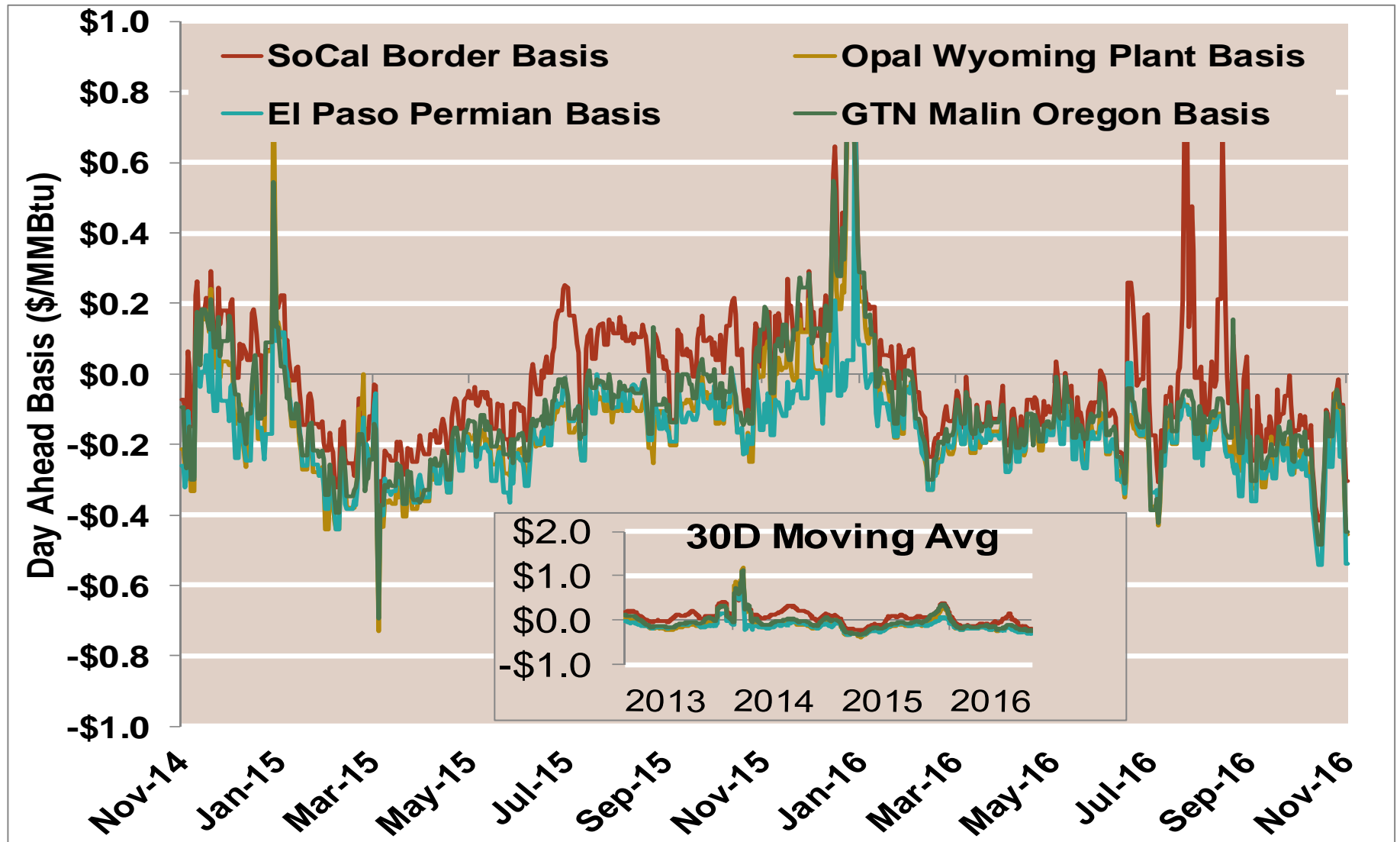


Notes:

Source: ICE

Updated Nov-2016

West Daily Day-Ahead Basis

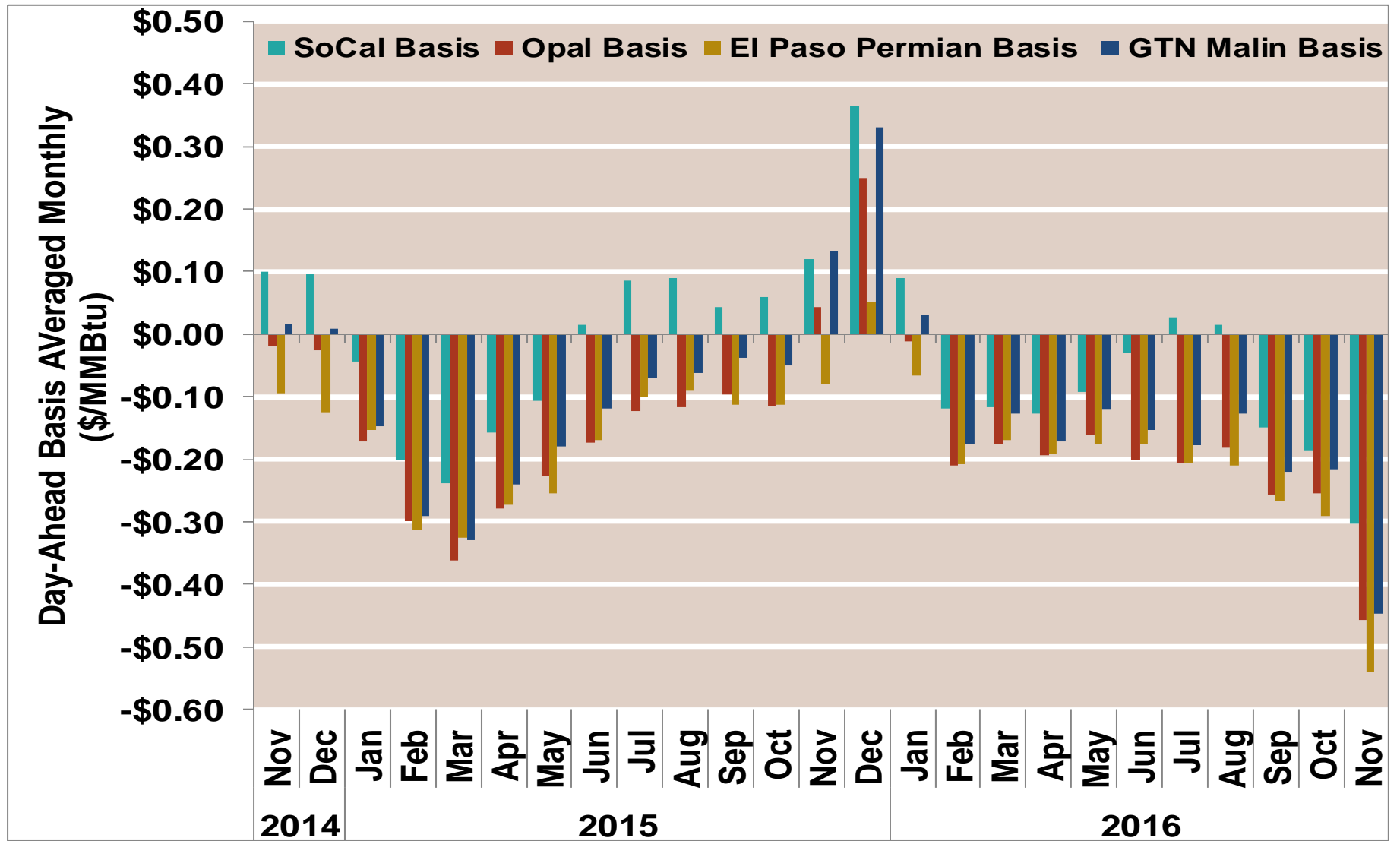


Notes:

Source: ICE

Updated Nov-2016

West Average Monthly Basis

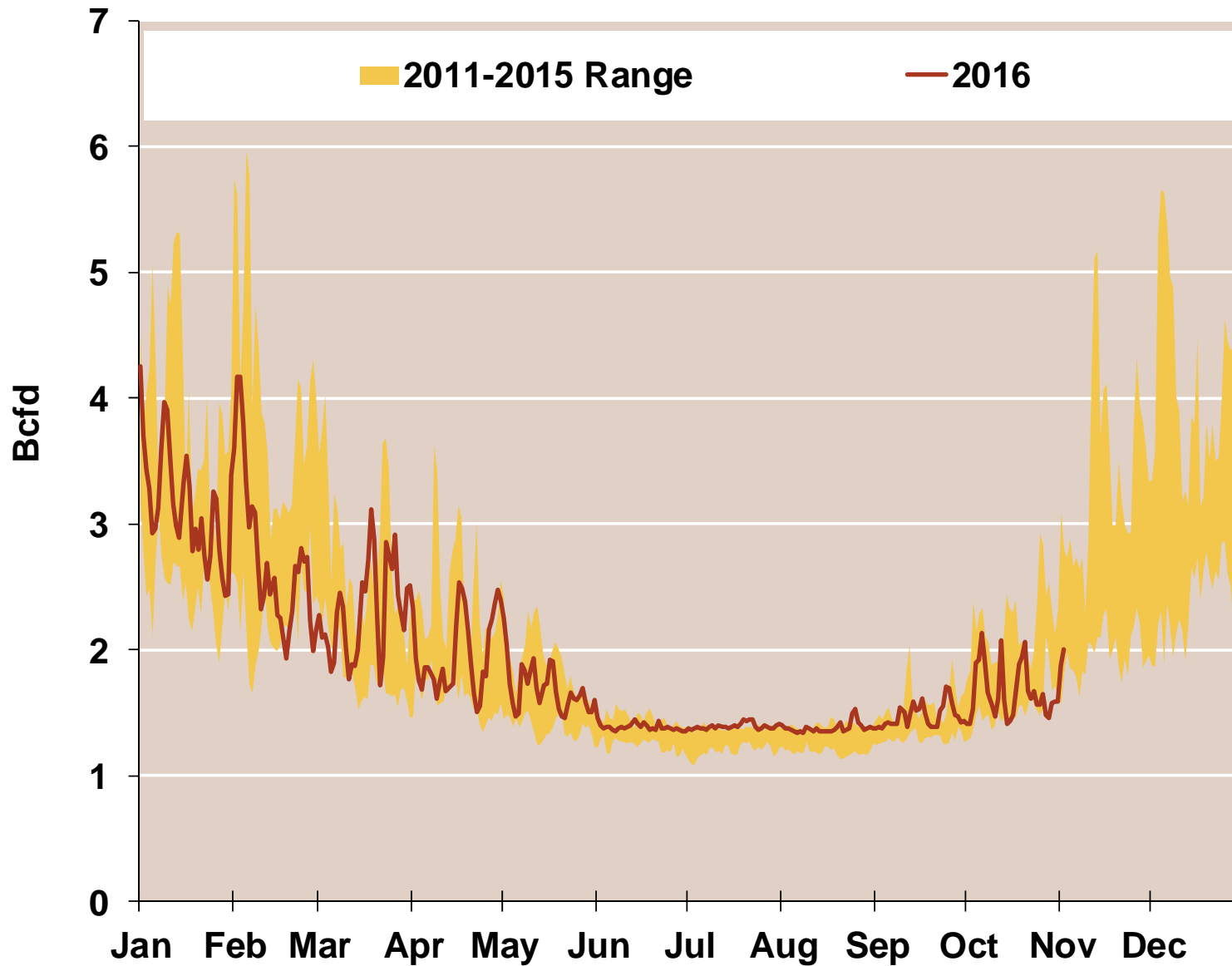


Notes:

Source: ICE

Updated Nov-2016

Daily Rockies Natural Gas Demand All Sectors



Source: Derived from *Bentek Energy* data

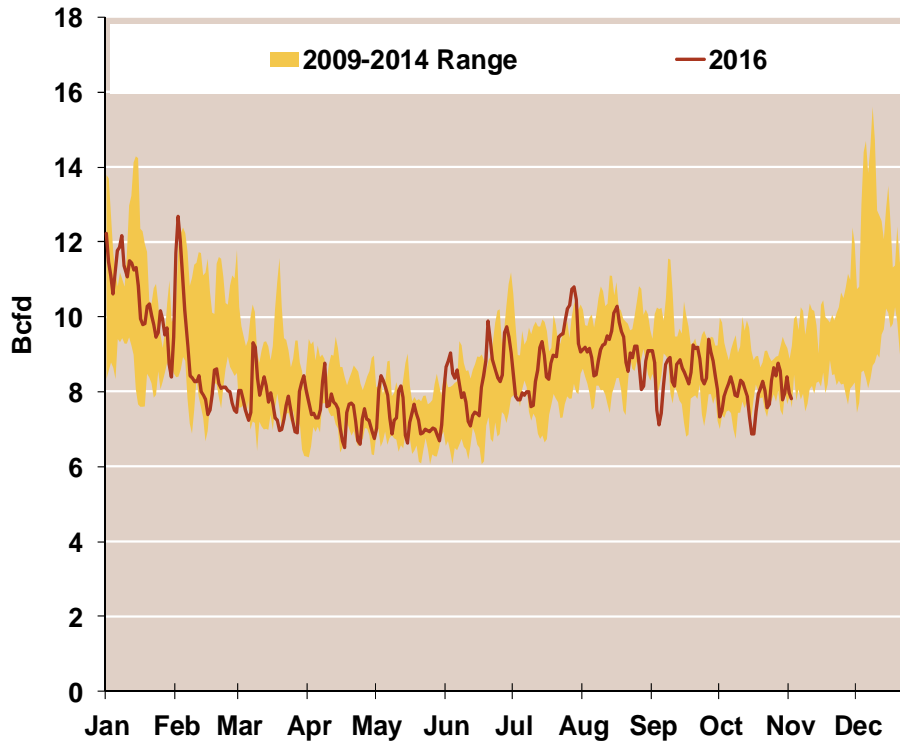
Note: Rockies is defined as Montana, Wyoming, Colorado, and Utah

Updated: Oct 2015

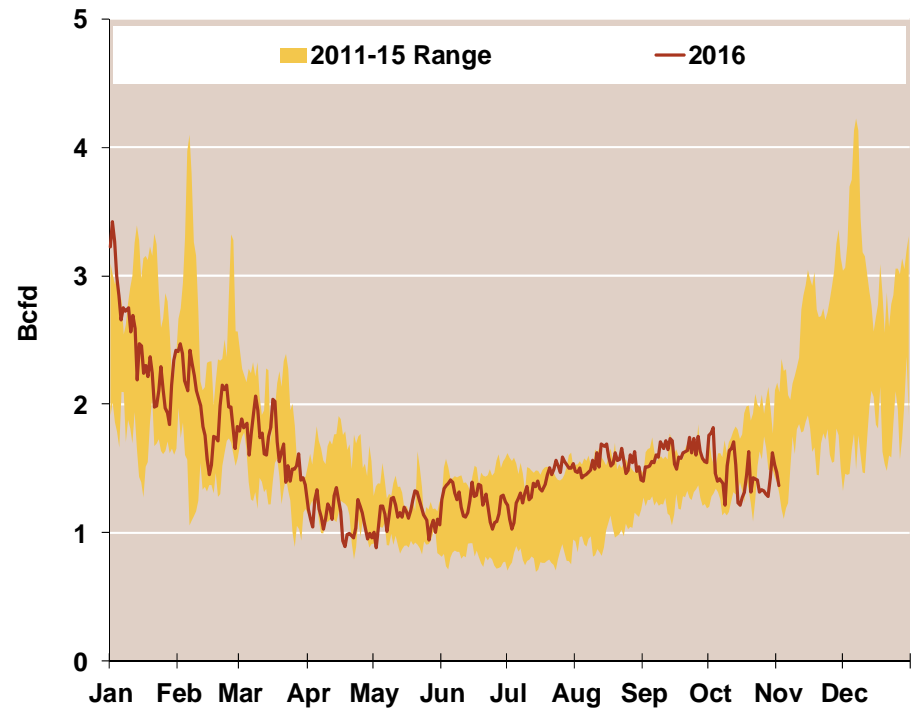
8

Daily Southwest and Northwest Natural Gas Demand All Sectors

Southwest



Northwest



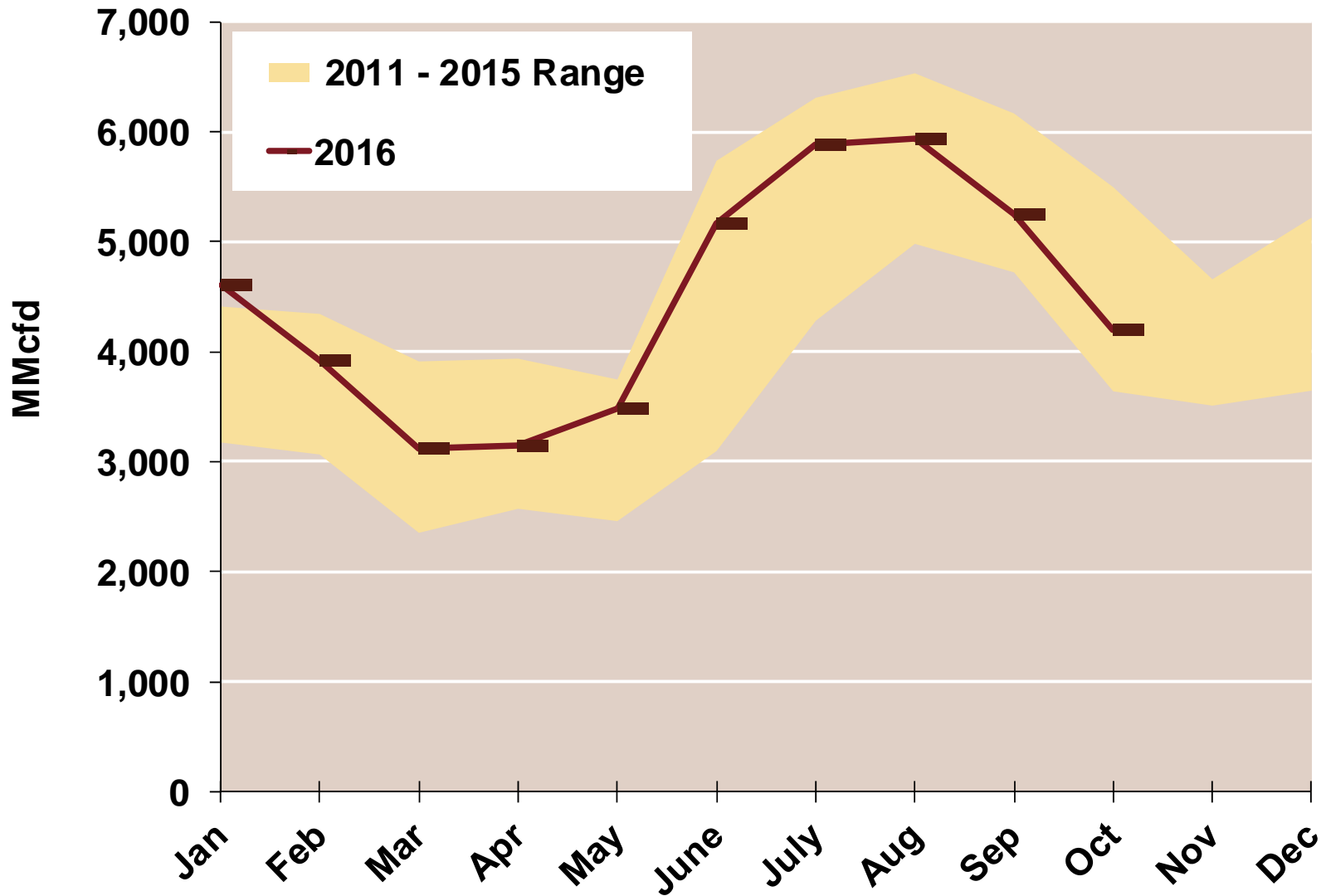
Source: Derived from *Bentek Energy* data

Note: Data derived from interstate natural gas pipeline flows.

Southwest is defined as New Mexico, Arizona, California, Nevada and the Northwest is defined as Idaho, Oregon, and Washington

Updated: Oct 2015

West Natural Gas Consumption for Power Generation



Source: Derived from *Bentek Energy* data

Note: West is defined as Montana, Wyoming, Colorado, Utah New Mexico, Arizona, California, Nevada , Idaho, Oregon, and Washington

Updated: Oct 2015