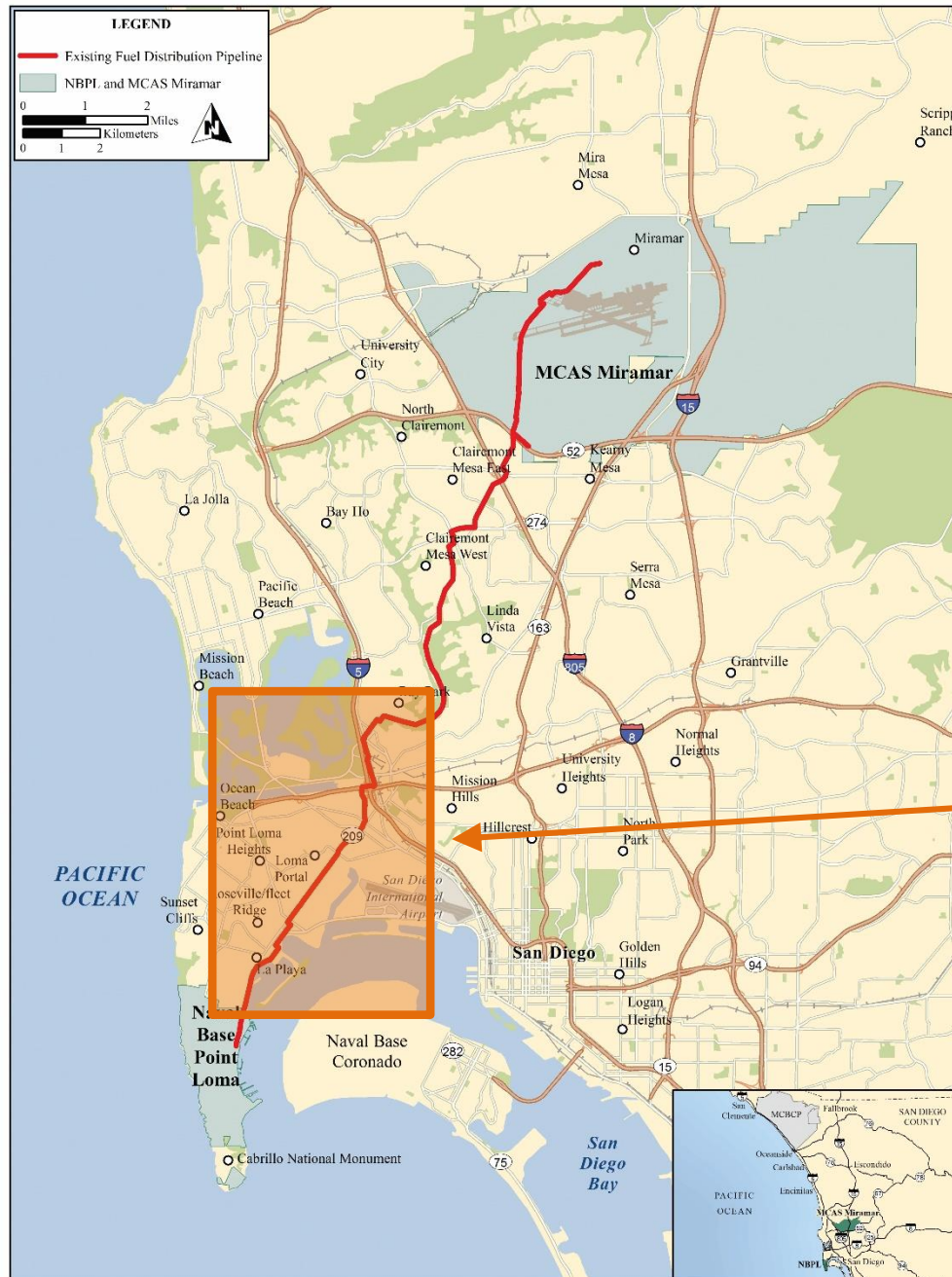




The Miramar Pipeline extends 17.3 miles from Naval Base Point Loma to Marine Corps Air Station Miramar



Project area

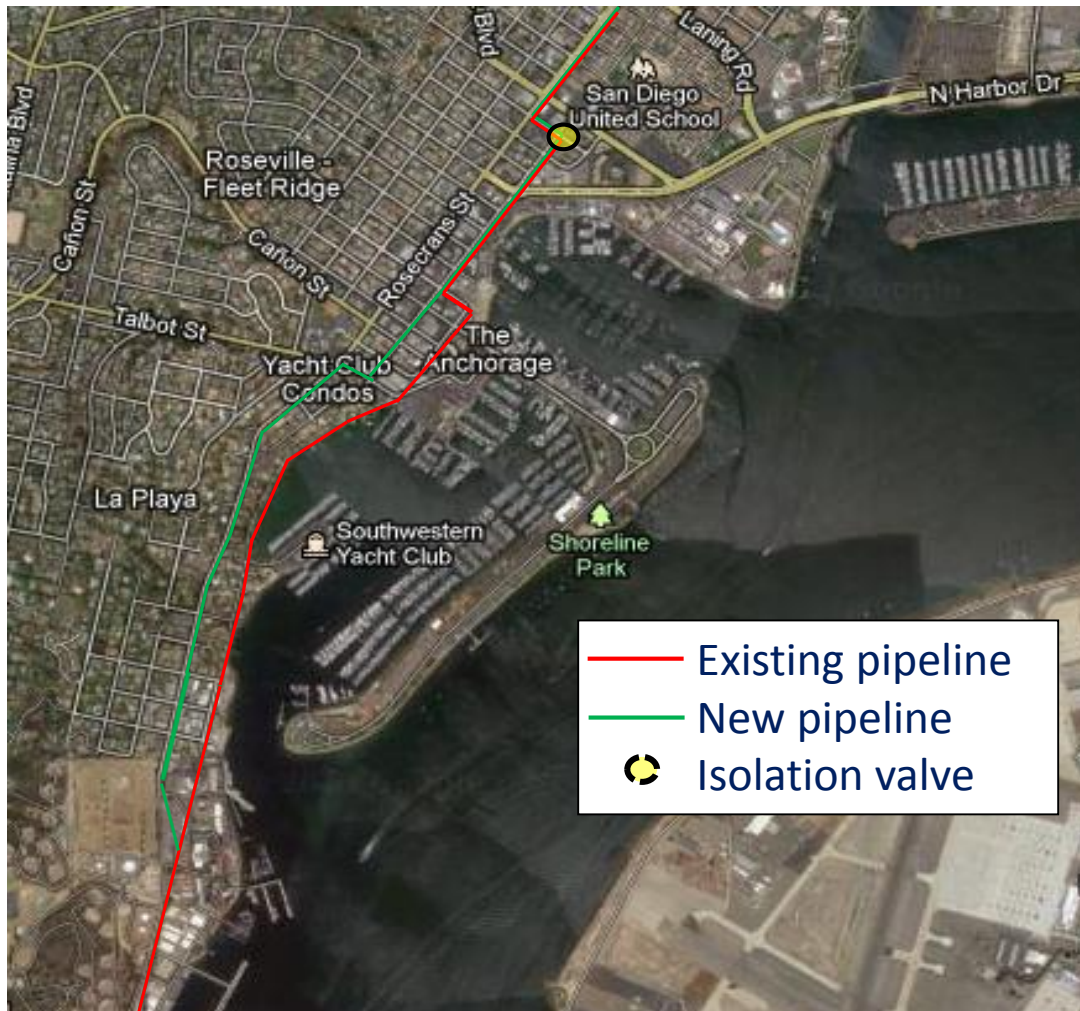


Project Area





Naval Base Point Loma to Lytton Street



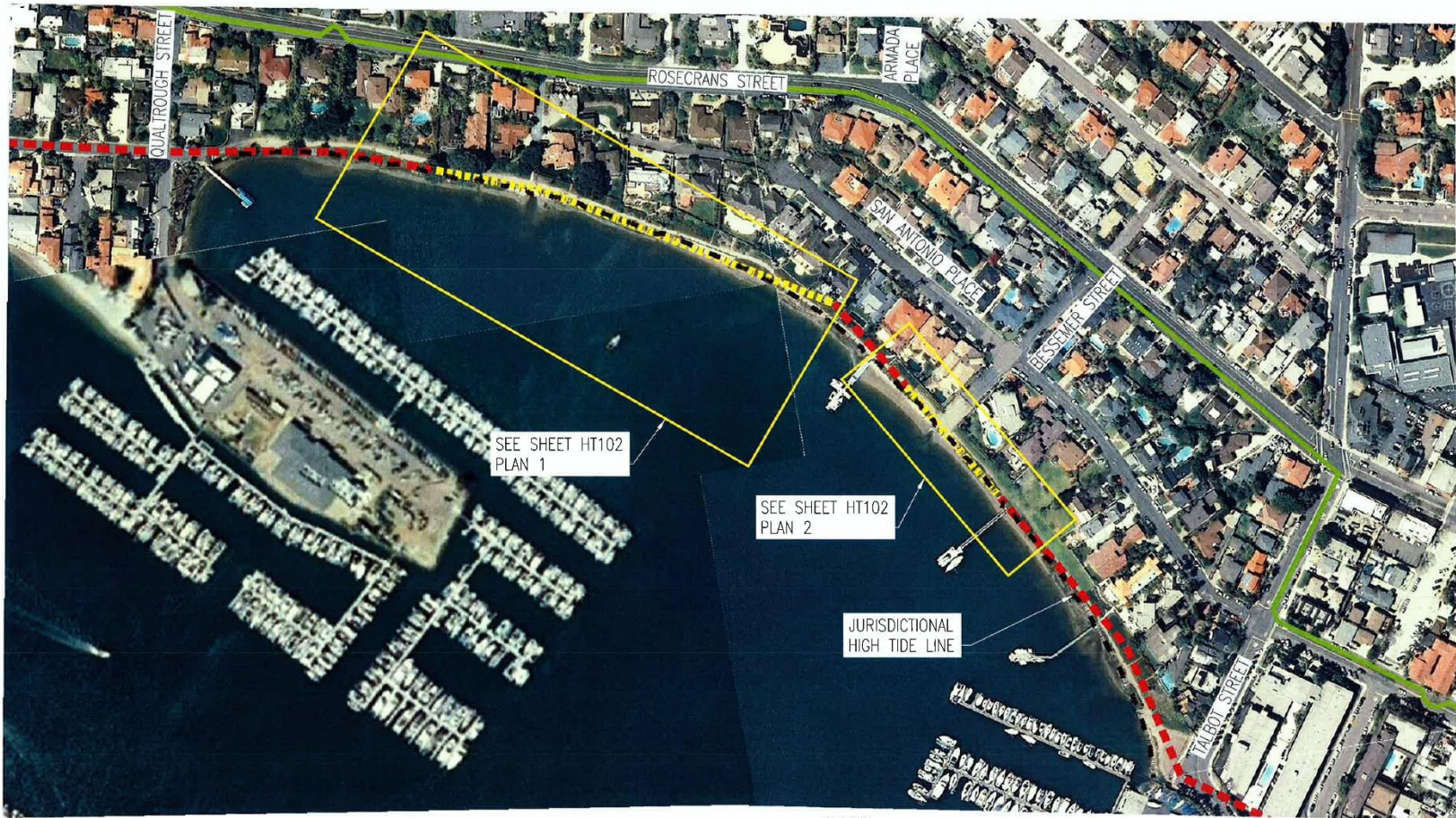
Replace 3.5 miles of pipeline from NBPL to Lytton Street



La Playa Waterfront/Bayside Trail







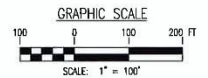
Sections Removed or Closed in Place



LOCATION MAP - NAVY FUEL LINE REMOVAL
SCALE: 1" = 100'

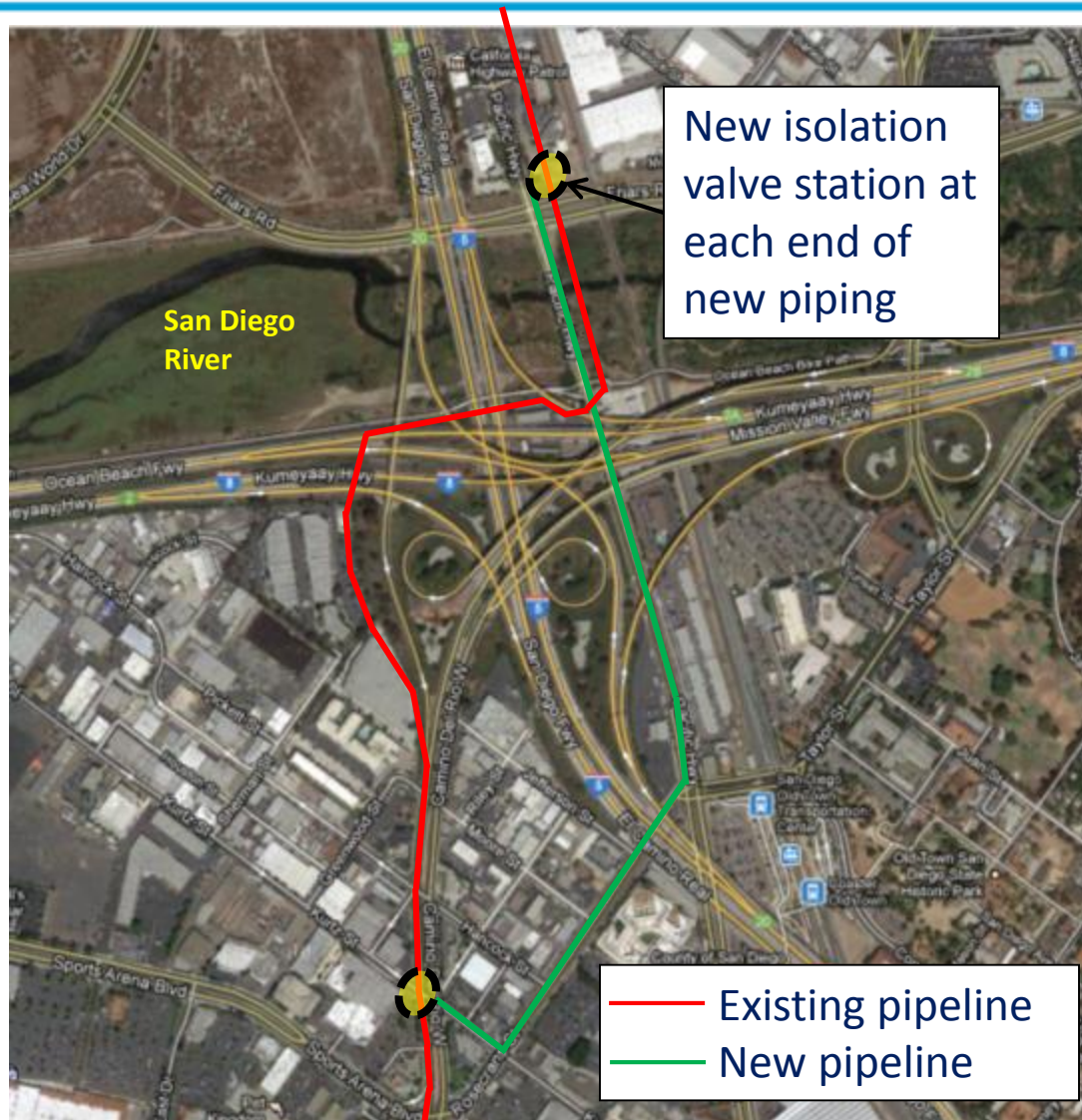


-  EXISTING FUEL LINE TO BE ABANDONED IN PLACE
-  EXISTING FUEL LINE TO BE REMOVED; 1175 LF
-  PROPOSED FUEL LINE ROUTE
-  JURISDICTIONAL HIGH TIDE LINE





San Diego River Crossing





Tecolote Canyon



**Install one isolation valve station at end of Knoxville Street
and one isolation valve station at Tecolote Nature Center**