



Miramar Pipeline Repair and Relocation

Project Overview

June 22, 2016

CAPT Howard C. Warner III
Commanding Officer NBPL



Background



Miramar Pipeline is critical for supporting the Navy's fueling needs and operational mission

About the Existing Miramar Pipeline

The existing Miramar Pipeline transports fuel for Navy ships and aircraft

- Is an 8" carbon-steel fuel pipeline
- Built in 1954 within City of San Diego easements
- Spans 17.3 miles from Naval Base Point Loma to Marine Corps Air Station Miramar
- Transports approximately 80-100 million gallons of fuel annually



The existing
Miramar
Pipeline
extends
17.3 miles
from NBPL to
MCAS
Miramar





Project Overview



Repairing and relocating the pipeline promotes long-term safety and reliability

Project

Repair and relocate approximately five miles of the southern end of the pipeline

- Relocate approximately 3.5 miles of pipeline from the La Playa area (NBPL to Lytton Street) to the Rosecrans Street right-of-way, with segments in portions of Talbot Street, Scott Street and Keats Street
- Relocate approximately one mile of pipeline at the San Diego River crossing
- Install five isolation valve stations

New pipe and relocation will address:

- Pipeline anomalies, such as dents and corrosion, to promote its safe and long-term use
- Seismic geohazards by installing five additional isolation valve stations
- Effective maintenance and repair in the future



Interagency Cooperation



The Navy works with community partners and federal agencies to ensure adherence with all laws and regulations

Ensuring Compliance

- Miramar Pipeline currently meets all operational safety requirements
- The new pipeline will be compliant with the U.S. Department of Transportation Pipeline and Hazardous Materials Safety Administration standards
- The Navy has coordinated with these agencies and others:
 - City of San Diego
 - Port of San Diego
 - California Department of Transportation (Caltrans)
 - San Diego Association of Governments (SANDAG)
 - Army Corps of Engineers
 - Metropolitan Transit System
 - U.S. Coast Guard
 - Regional Water Quality Control Board
 - Air Pollution Control District



Project Safety

**For your own safety,
PLEASE DO NOT ENTER THE CONSTRUCTION WORK ZONE**

- The Navy and Contractor are committed to public and worksite safety
- Traffic control measures guide drivers through construction zones
- Reflective rails used to keep the public out of open trench areas
- Construction crews assist safe traffic flow and property access
- There are safety procedures in place to minimize injuries to workers



Project Execution



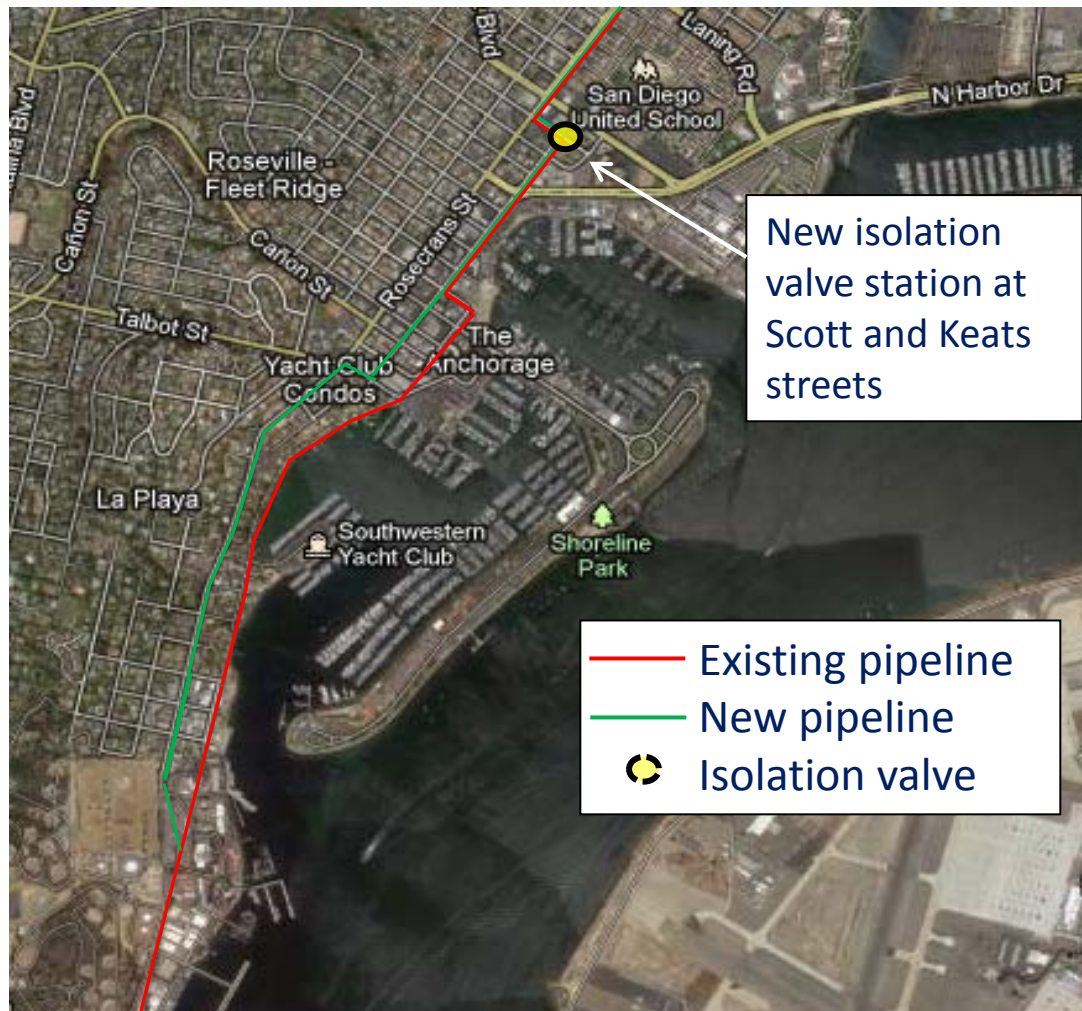
The Navy is committed to minimizing construction impacts on the community

Construction on Rosecrans Street began in February 2016

- Anticipated project completion: Summer 2017
- Project areas:
 - 1: Segments of Rosecrans Street and Scott Street from Naval Base Point Loma to Lytton Street
 - 2: La Playa Waterfront/Bayside Trail
 - 3: San Diego River Crossing
 - 4: Tecolote Canyon



NBPL to Lytton Street



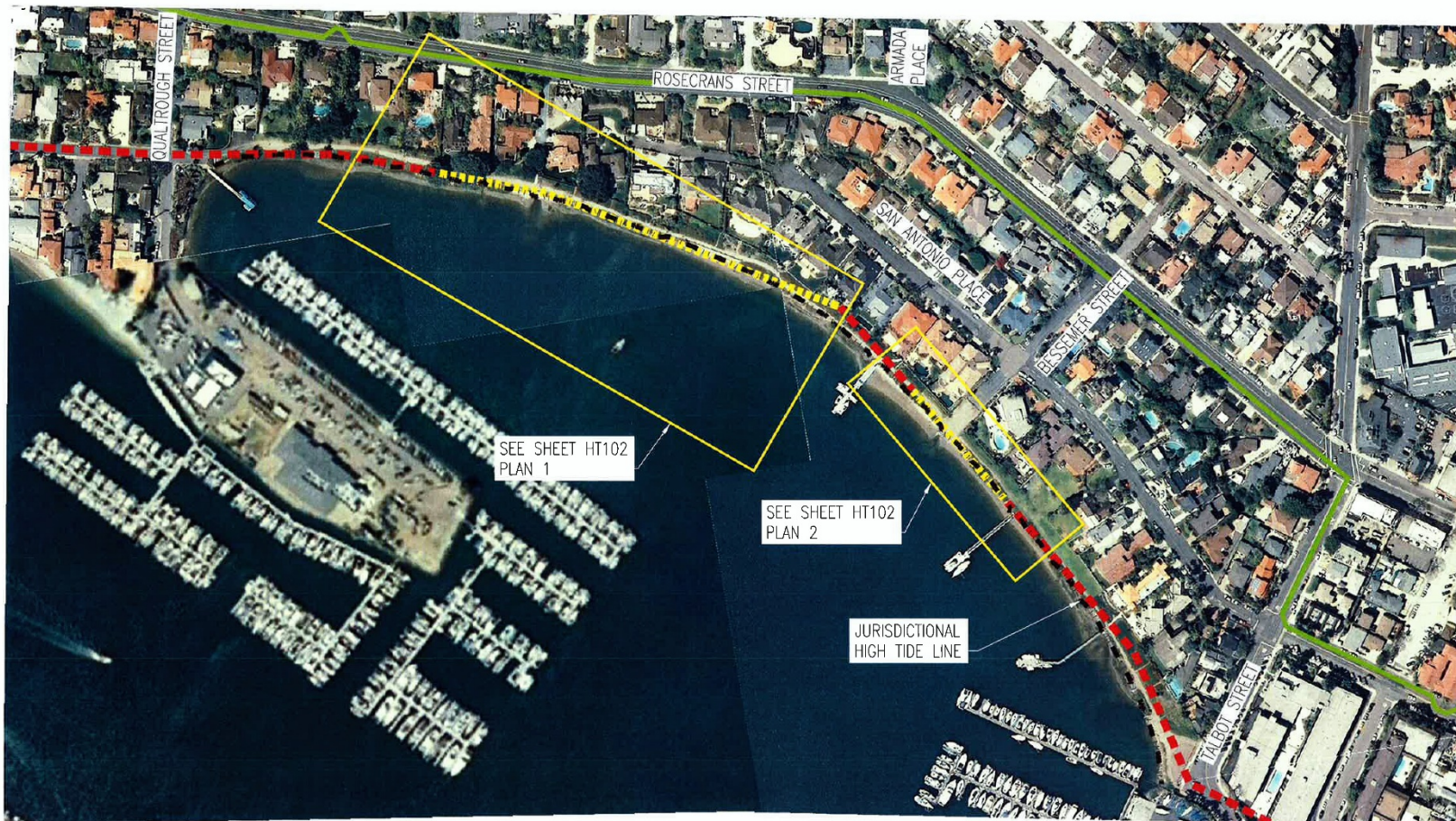
Replace 3.5 miles of pipeline from NBPL to Lytton Street



La Playa Waterfront/Bayside Trail



Sections to be Removed (yellow)/Closed in Place (red)







LOCATION MAP - NAVY FUEL LINE REMOVAL

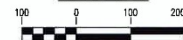
SCALE: 1" = 100'

PLAN NORTH



-  EXISTING FUEL LINE TO BE ABANDONED IN PLACE
-  EXISTING FUEL LINE TO BE REMOVED; 1175 LF
-  PROPOSED FUEL LINE ROUTE
-  JURISDICTIONAL HIGH TIDE LINE

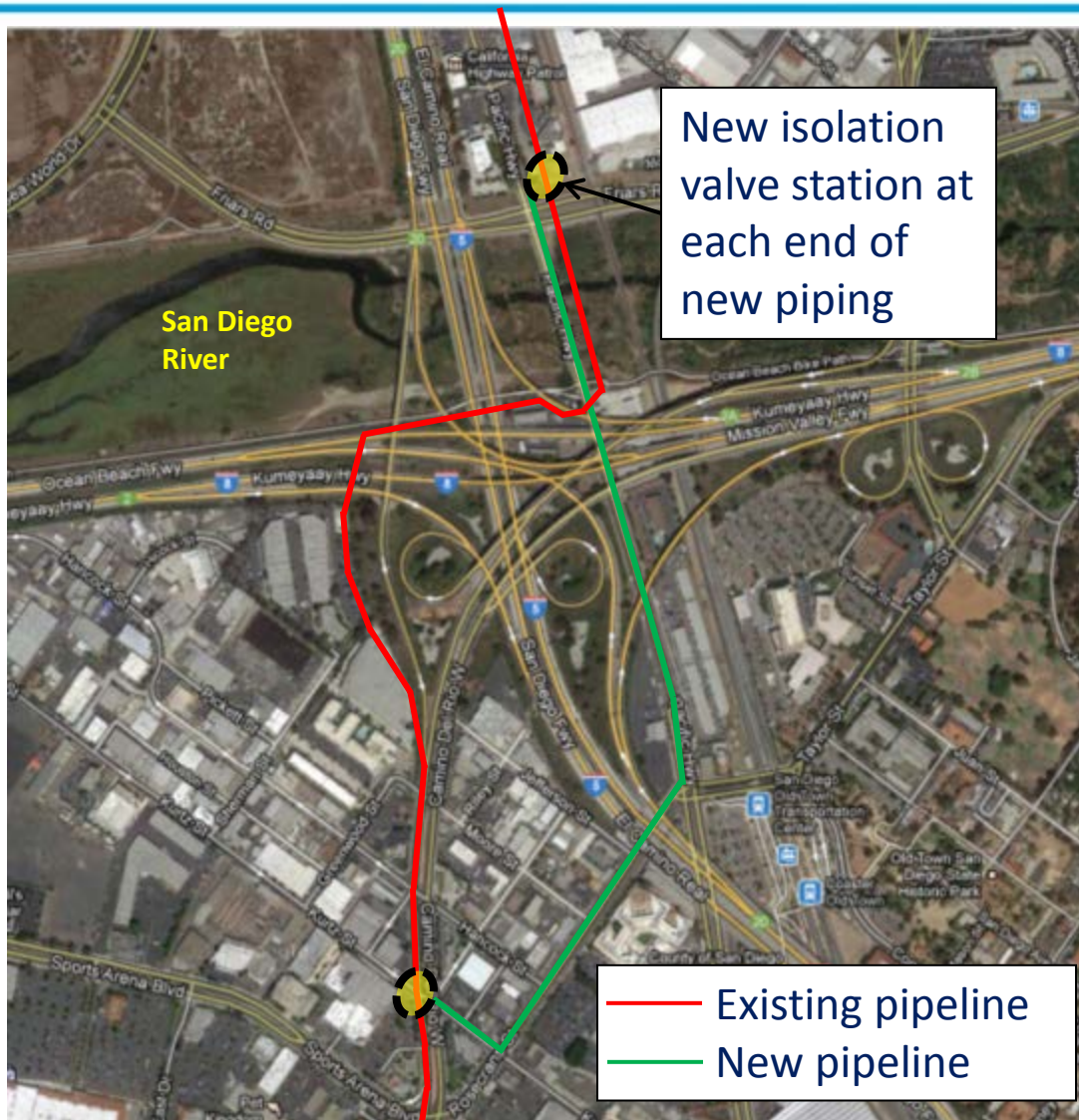
GRAPHIC SCALE



SCALE: 1" = 100'



San Diego River Crossing





Tecolote Canyon



Install one isolation valve station at end of Knoxville Street
and one isolation valve station at Tecolote Nature Center



Project Execution



Construction requires several steps and takes three to five weeks in each work segment

Basic Steps

1. Traffic control
2. Potholing, to check for existing utilities and other obstructions
3. Trenching
4. Pipe installation
5. Backfilling the trench
6. Base paving
7. Final paving occurring at a later date



Work Accomplished to Date



The project progresses about 120 linear feet per day.

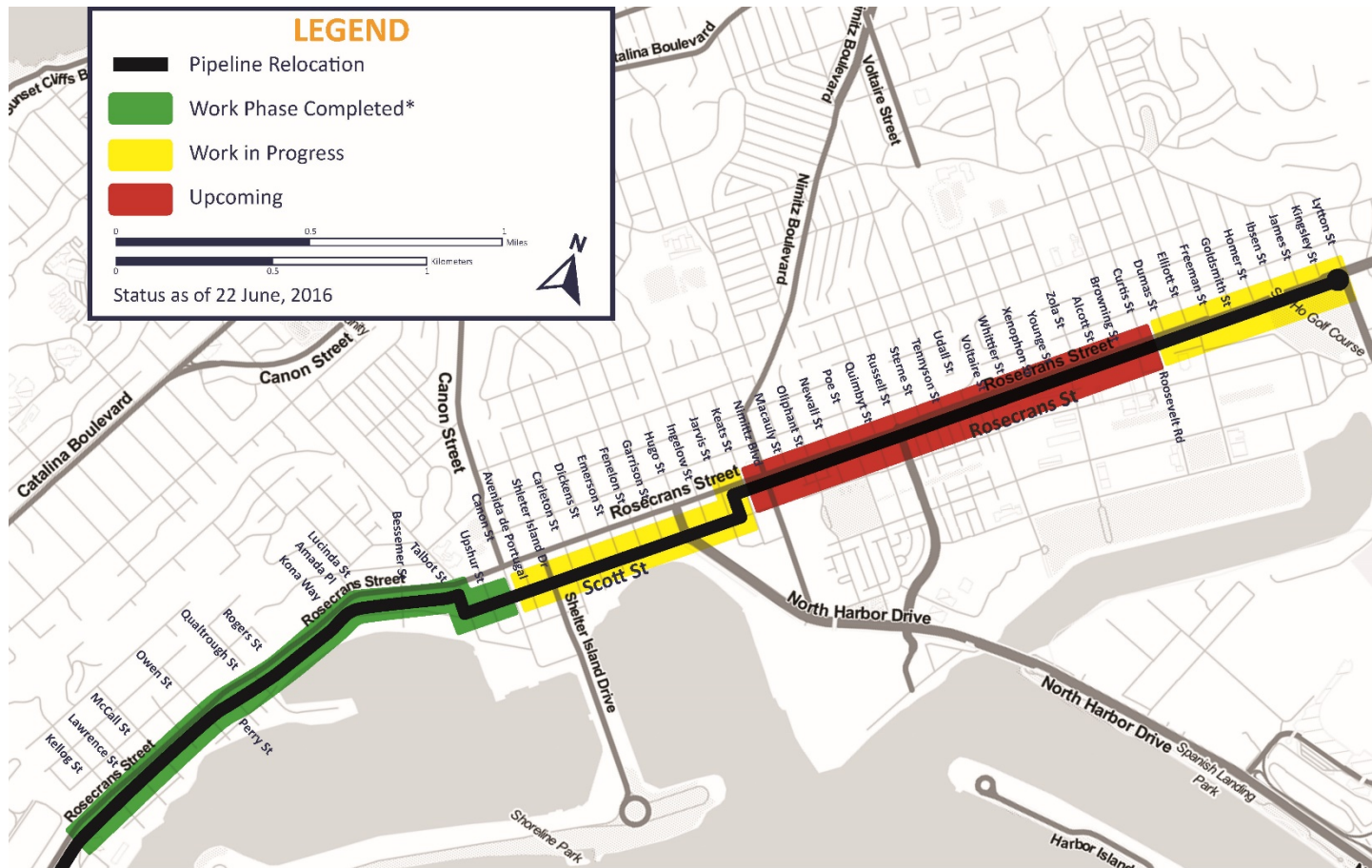
Work Progress	As of June 20 (Linear Feet)
Trenching	9,865
Pipe laid, including welding and coating	9,466
Trench backfilled with slurry	9,302
Asphalt paving	9,058

- Total project completion: 28%
- Total pipe remaining: 14,294 linear feet



Work Accomplished to Date

Point Loma Area

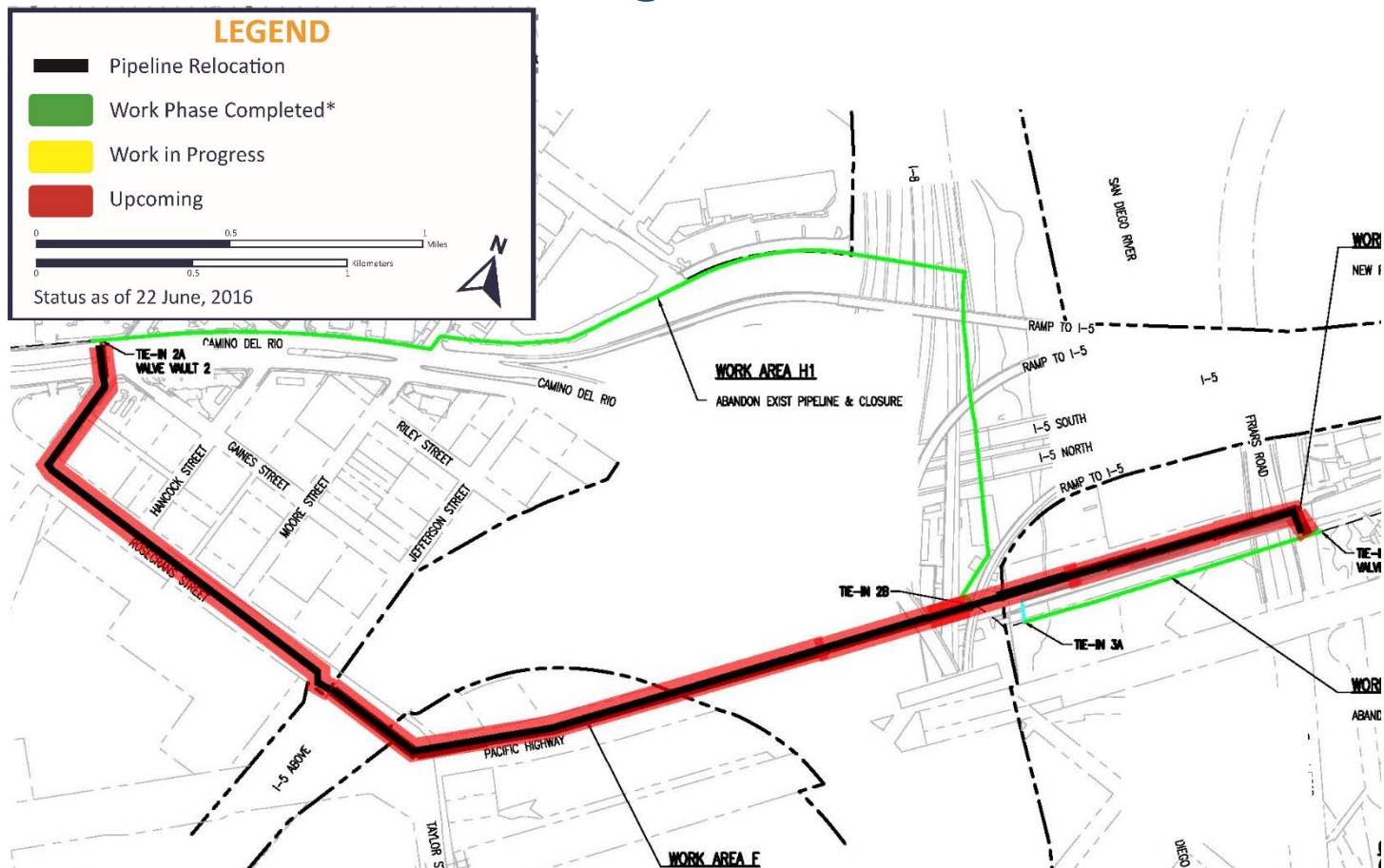


*Work in this area will resume in late Fall 2016 for final street paving



Work Accomplished to Date

San Diego River Area





Upcoming Night Work



Residents and businesses will receive notice in advance of night construction activities

- Night construction hours are Monday through Thursday from 8 p.m. to 6 a.m.
- No construction work on holidays
- Work will be conducted at five intersections:
 - Rosecrans Street and Nimitz Boulevard
 - Rosecrans Street and Lytton Street
 - Camino del Rio West and Kurtz Street
 - Rosecrans Street and Jefferson Street
 - Taylor Street and Pacific Coast Highway



Construction Timeframe



LOCATION	APPROXIMATE DURATION
<p><u>Naval Base Point Loma to Lytton Street</u></p> <ul style="list-style-type: none">• Pipeline relocation to Rosecrans Street• Isolation valve station installation at Scott and Keats streets	<p>8 months (February – Fall 2016)</p>
<p><u>La Playa Bayside Trail</u></p> <ul style="list-style-type: none">• Remove 1,175 feet of pipe• Restore Trail	<p>2 months (Fall 2016 – Winter 2016)</p>
<p><u>San Diego River Crossing</u></p> <ul style="list-style-type: none">• Pipeline relocation• Isolation valve station installation	<p>7 months (Fall 2016 – Spring 2017)</p>
<p><u>Rose Canyon Fault Zone Crossing</u></p> <ul style="list-style-type: none">• Isolation valve station installation	<p>1 – 2 months (Summer 2017)</p>



What to Expect During Construction



- Traffic impacts; lane closures and detours
- Street parking reductions
- Temporarily blocked driveways (for a few hours)
- Access restrictions to La Playa Bayside Trail (during pipeline removal)
- Noise
- Large, heavy construction equipment

**Residents and businesses will receive notice in advance
of construction activities**



Traffic Management Plan



- Maintaining two-way traffic on Rosecrans St.
- Limiting closed intersections, including on Scott St. and Rosecrans St.
- Night construction in major intersections on weeknights to avoid peak and weekend traffic
- Signage will guide commuters through construction zone
- Trenches will be plated; normal traffic pattern will resume after each work day
- Temporary removals of two-hour parking restrictions in areas when street parking options are limited due to construction
- Currently evaluating open trench for intersections to reduce duration of impact



Noise



Construction activity and vehicles driving over metal plates can be noisy

Metal Plates are Necessary for Traffic Safety

- Metal plates are designed with texture for safety of vehicles
- Metal plates are used to cover the trench during non-working hours
- Metal plates are typically in the active construction zone for about two weeks
- Daily plate inspection at end of work day



Dust and Dirt

The Navy has site cleanup protocols in place to minimize dust and dirt

Cleanup Protocol:

- The Contractor is responsible for site cleanup multiple times per day with street sweeper and hand sweeping
- Sweep around metal plates to minimize dust from vehicular traffic
- All debris removed daily



Traffic & Safety



- We are here to help. Flag a workman if you need assistance getting out of your driveway or if you have an immediate safety concern.
- If you believe motorists are driving unsafely, please contact the Police Department.

**For your own safety,
PLEASE DO NOT ENTER THE CONSTRUCTION WORK ZONE**



Community Outreach



The Navy and the Contractor are providing timely notification of construction activities and anticipated impacts, and responding to public inquiries and concerns

Contact Us

- **Toll-free Information Line:** (844) 409-9846
- **Email:** NAVFAC_SW_MiramarPipeline@navy.mil

Follow Us

- **Website:** www.cnic.navy.mil/NBPLMiramarPipeline
- **Twitter:** @MiramarPipeline
- **Facebook:** www.facebook.com/NavalBasePointLoma/

