



Miramar Pipeline Repair and Relocation

Project Overview

December 2015



Background



The Miramar Pipeline is critical for supporting the Navy's fueling needs and operational mission

About the Miramar Pipeline

The Miramar Pipeline transports fuel for Navy ships and aircraft

- Is an 8" carbon-steel fuel pipeline
- Built in 1954 within City of San Diego easements
- Spans 17.3 miles from Naval Base Point Loma to Marine Corps Air Station Miramar
- Transports approximately 100 million gallons of fuel annually



The Miramar Pipeline extends 17.3 miles from NBPL to MCAS Miramar





Project Overview



Repairing and relocating the pipeline promotes long-term safety and reliability

Project

Repair and relocate approximately five miles of the southern end of the pipeline

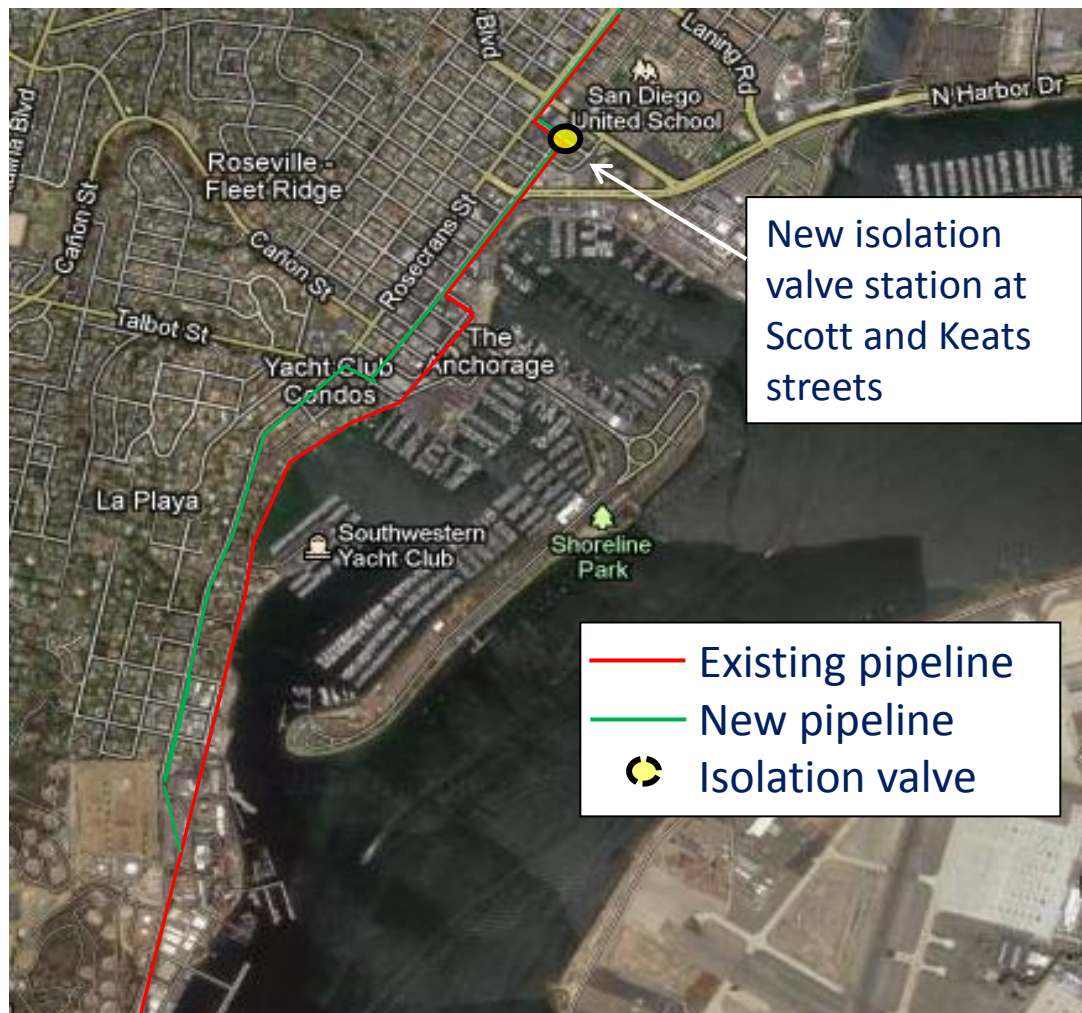
- Relocate approximately 3.5 miles of pipeline from the La Playa area (NBPL to Lytton Street) to the Rosecrans Street right-of-way, with segments in portions of Talbot Street, Scott Street and Keats Street
- Relocate approximately one mile of pipeline at the San Diego River crossing
- Install five isolation valve stations

New pipe and relocation will address:

- Pipeline anomalies (dents, corrosion and metal loss)
- Seismic geohazards (new isolation valves)
- Ability to access pipeline for maintenance



NBPL to Lytton Street



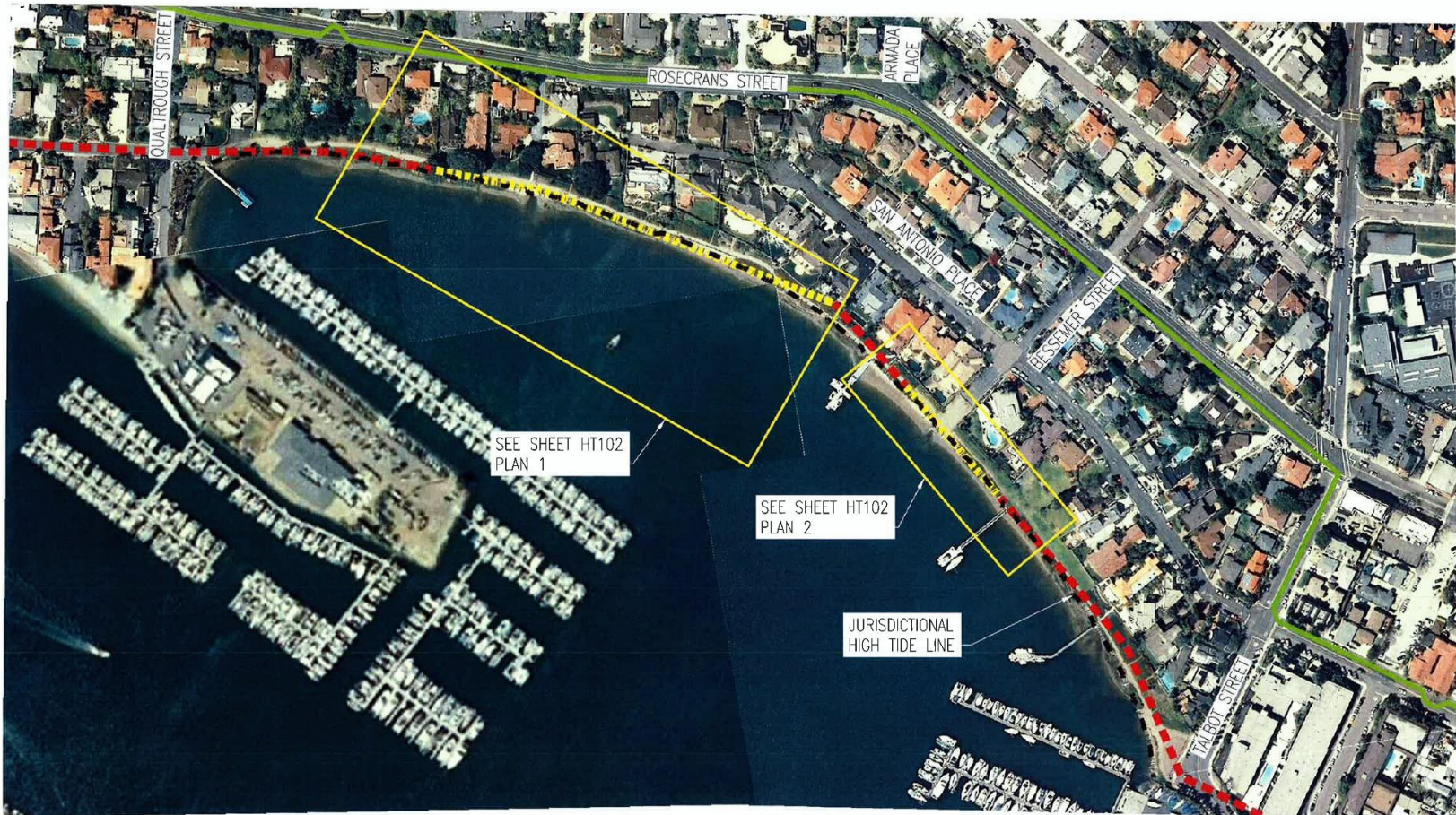
Replace 3.5 miles of pipeline from NBPL to Lytton Street



La Playa Waterfront/Bayside Trail







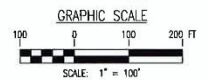
Sections Removed or Closed in Place



LOCATION MAP - NAVY FUEL LINE REMOVAL
SCALE: 1" = 100'

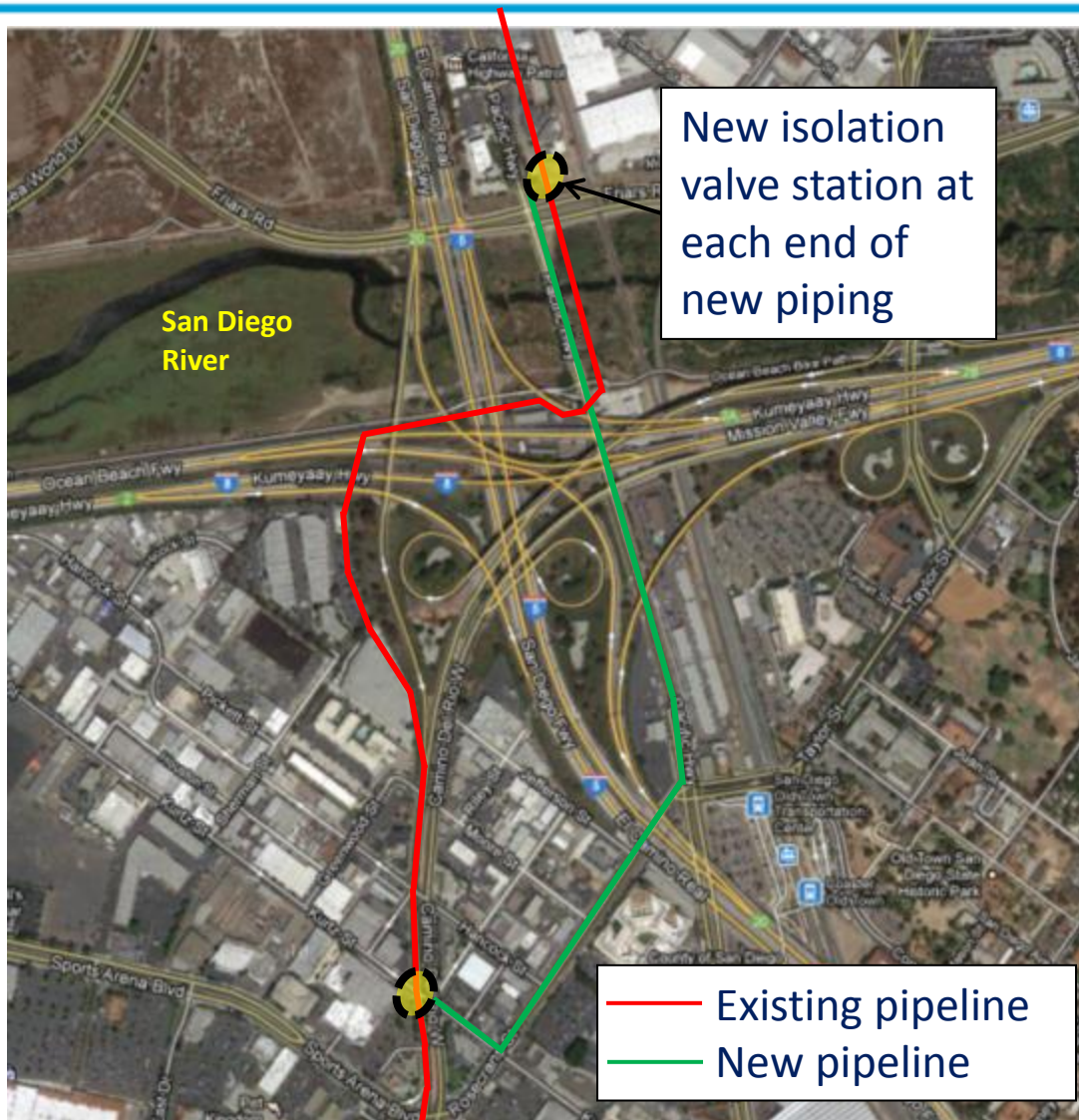


-  EXISTING FUEL LINE TO BE ABANDONED IN PLACE
-  EXISTING FUEL LINE TO BE REMOVED; 1175 LF
-  PROPOSED FUEL LINE ROUTE
-  JURISDICTIONAL HIGH TIDE LINE





San Diego River Crossing





Tecolote Canyon



**Install one isolation valve station at end of Knoxville Street
and one isolation valve station at Tecolote Nature Center**



Project Execution



The Navy has designed construction activities to minimize impacts on the community

Construction Timeline

Construction begins January 11, 2016

- Anticipated project completion: Summer 2017
- Projected construction hours in residential areas: 9 a.m. to 3 p.m., Monday-Friday
- Construction hours in commercial areas may vary to minimize impacts on traffic flow
- Location: Start at Naval Base Point Loma; proceed northeast along Rosecrans Street to Lytton Street

Areas Affected

Community along Rosecrans Street, including La Playa neighborhood, and vicinity of San Diego River at Pacific Highway

- Residential, commercial and high-traffic areas
- Natural and semi-natural habitats (La Playa and San Diego River)



Construction Timeframe



LOCATION	APPROXIMATE DURATION
<p><u>Naval Base Point Loma to Lytton Street</u></p> <ul style="list-style-type: none">• Pipeline relocation to Rosecrans Street• Isolation valve station installation at Scott and Keats streets	<p>8 months (January – Summer 2016)</p>
<p><u>La Playa Bayside Trail</u></p> <ul style="list-style-type: none">• Remove 1,175 feet of pipe• Restore Trail	<p>1 – 2 months (Late Summer/Fall 2016)</p>
<p><u>San Diego River Crossing</u></p> <ul style="list-style-type: none">• Pipeline relocation• Isolation valve station installation	<p>9 months (Late Summer 2016 – Spring 2017)</p>
<p><u>Rose Canyon Fault Zone Crossing</u></p> <ul style="list-style-type: none">• Isolation valve station installation	<p>1 – 2 months (Spring 2017)</p>



Construction Impacts



Residents and businesses will receive notice in advance of construction activities

What to Expect During Construction

- Traffic impacts
- Lane closures and detours
- Bus stop relocations and possible detours
- Street parking reductions
- Temporarily blocked driveways (for a few hours)
- Access restrictions to La Playa Bayside Trail (during pipeline removal)
- Noise
- Large, heavy construction equipment

Traffic Management Plan

- Two-way traffic will be maintained
- Signage will guide commuters through construction zone
- Trenches will be plated; normal traffic pattern will resume after each work day
- Currently evaluating open trench for intersections to reduce duration of impact



La Playa Trail Restoration Plan



Scope of Work

- Remove 1,175 feet of pipe
- “Close in place” other sections of pipe
- Restore trail
 - Restore ground surface to original pathway condition
 - Stabilize/improve previously eroded slope areas along pipeline removal
 - Revegetate with non-invasive, native plant species

Construction Impacts

- Temporary closure of portions of the trail
- Construction noise
- Heavy equipment and vehicles for excavation activities



Community Outreach



The Navy will provide timely notification of construction activities and anticipated impacts, and respond to public inquiries and concerns

Contact Us

- **Toll-free Information Line:** (844) 409-9846
- **Email:** NAVFAC_SW_MiramarPipeline@navy.mil

Follow Us

- **Website:** www.cnic.navy.mil/NBPLMiramarPipeline
- **Twitter:** @MiramarPipeline
- **Facebook:** www.facebook.com/NavalBasePointLoma/

