



### ■ Data Management Services

The office of Data Management Services, Sage Hall, Room 336, provides the following services.

■ **Exam Grading and Analysis:** Computer-facilitated exam grading providing standard reports with student scores, incorrect responses, class frequency distribution, class statistics, item-analysis and item-statistics.

■ **Research Projects – Data Collection:** Computer-facilitated research-data entry specific to the customer’s needs.

■ **Custom Design for Optical Scan Survey Form:** Consultation and design services for the creation of surveys to accurately capture the data desired.

■ **Faculty and/or Course Evaluation Processing:** Please visit the DMS website, the self-serve webpage or the UIT Catalog of IT Services for access to direct links to services.

[it.unt.edu/datamanager](http://it.unt.edu/datamanager)  
[it.unt.edu/dms-selfserve](http://it.unt.edu/dms-selfserve)

## Benchmarks Online

University Information Technology

IT Department Journal since 1980

IT News Journal • Subscribe today!

[benchmarks/it.unt.edu](http://benchmarks/it.unt.edu)



### Idea for IT?

Submit your idea today!

[it.unt.edu/idea4it](http://it.unt.edu/idea4it)

## Contact Information

### Call, Click or Come By

Learn more about these UIT resources today!

Elizabeth Hinkle-Turner, director  
940-565-4808 | [ehinkle@unt.edu](mailto:ehinkle@unt.edu)

Ray Banks, technical service manager, CBTS  
940-369-8233 | [raymond.banks@unt.edu](mailto:raymond.banks@unt.edu)

JoAnn Luksich, manager, Data Management  
940-369-7416 | [joann.luksich@unt.edu](mailto:joann.luksich@unt.edu)



University Information Technology  
Sage Hall, Room 336  
1155 Union Circle #310709  
Denton, TX 76203-5017

P: 940-369-6029 | F: 940-565-4060  
Email: [unt.uit@unt.edu](mailto:unt.uit@unt.edu) | Online: [it.unt.edu](http://it.unt.edu)



# Instructional Information Technology Services

[it.unt.edu/iits](http://it.unt.edu/iits)

- Computer-Based Testing Services
- Data Management Services

## University Information Technology

- IT User Services
- Instructional IT Services
- Research IT Services
- Student Success IT Services

EST. 1890

# UNT

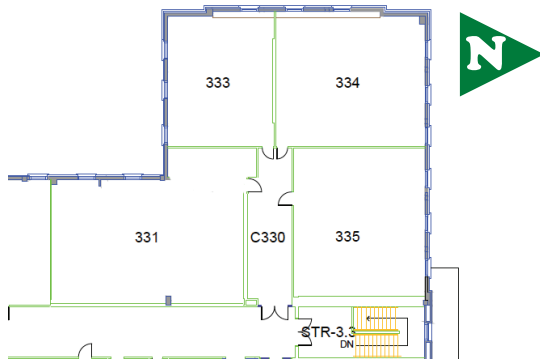
UNIVERSITY  
OF NORTH TEXAS

## Computer-Based Testing Services

The computer-based testing services are available for professors of courses that benefit from computerized testing for distance, blended or face-to-face classes. Assessment and testing are cornerstones of academic success and UNT actively supports faculty in the assessment of student learning. The Sage Hall Computer-Based Testing Center, Mobile Laptop Cart and other Instructional Information Technology Services play a strong role in faculty support and student learning.

### Sage Hall Computer-Based Testing Center

The center provides an opportunity for secure, high-stakes computer-based testing of large groups of students. The CBTC also provides instructors of UNT's high-enrollment courses with robust opportunities for assessment while also supporting smaller courses, certification testing and training sessions.



The CBTC provides computerized testing with or without proctors, 135 stations in Sage Hall, Room C330, with professional IT support.



### Sage Hall CBTC Hours for Reservation:

Monday-Thursday: 8 a.m.-9:30 p.m.

Friday: 8 a.m.-6 p.m.

Saturday: 9 a.m.-6 p.m.

■ **Sage Hall CBTC Drop-in Testing:** Available, but please contact the office first.

Monday-Friday: 8 a.m.-5 p.m.

■ **Sage Hall CBTC Test Monitoring:** The center employs UNT graduate students to serve as exam monitors and proctors and provide assistance to protect academic integrity and security compliance during exams. When making a reservation, just ask for test monitors to assist in proctoring assessments.

■ **Sage Hall CBTC Features:** The Sage Hall CBTC has four rooms that can be reserved as an entire 135-station block or in smaller entities.

Rm. 331: 39 stations • Rm. 334: 36 stations

Rm. 333: 24 stations • Rm. 335: 36 stations

Stations in the CBTC are equipped with the following computer configuration.

- Dell OptiPlex 790 Small Form Factors,  
Core I3 2100 Processor [3.1 GHz, 3M], 4GB RAM
- Windows 7 64-bit OS
- Checkin self-service login client
- Respondus Lockdown Browser client
- Blackboard-supported web browsers  
Internet Explorer, Mozilla Firefox, and Google Chrome
- Microsoft Office 2016
- Acrobat Professional XI
- Certiport Testing Suite
- Pearson Lockdown Browser

Other software applications, additional security measures and printing facilities are available upon request.

[it.unt.edu/test](http://it.unt.edu/test)

■ **Mobile Cart Testing Service:** A 30-unit laptop cart that can travel to your classroom is available for on-the-spot online testing.

■ **Discovery Park Testing Services:** Four computer classrooms are available at UNT's Discovery Park, including rooms B140, B142, D212 and D215. Each can be configured and monitored for testing.

■ **Computer Workshop Room 154:** The 30-station UIT instructional, collaborative workshop, located in Sage Hall, Room 154, can be configured for a workshop or a short-term computer classroom upon request.

[it.unt.edu/iits](http://it.unt.edu/iits)