

Appendix A

Figure 1: General Location of Cedar Rapids Convention Complex Parkade



Source: Iowa State University Geographic Information Systems Support and Research Facility, Iowa Geographic Map Server, Summer 2011 Orthophotos – USDA (natural color), 1999-2012, Online; <http://ortho.gis.iastate.edu/>, Retrieved April 24, 2012

Figure 2: Historic Flood Insurance Rate Map – Cedar Rapids Convention Complex Parkade

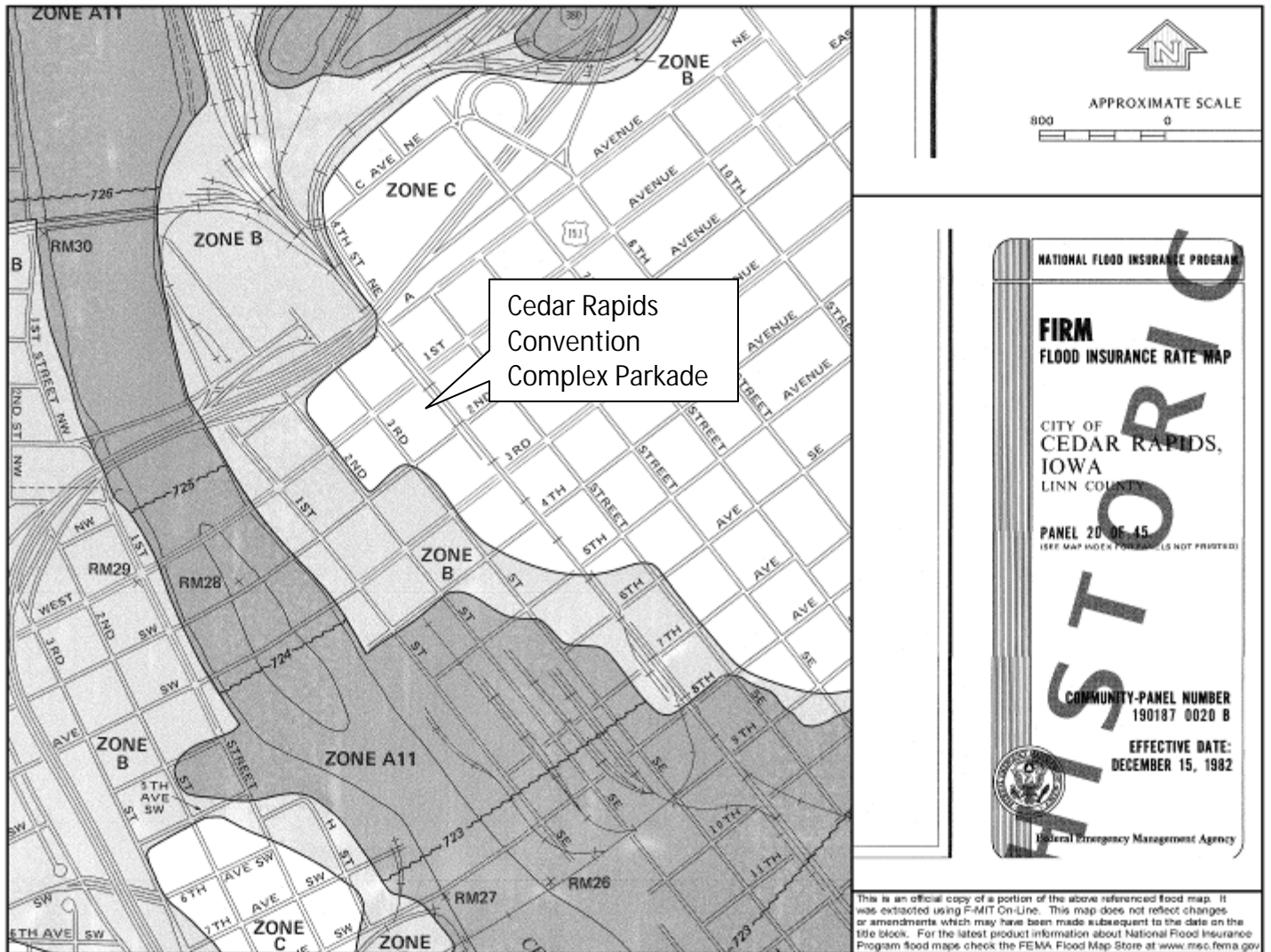


Figure 3: Current Flood Insurance Rate Map – Cedar Rapids Convention Complex Parkade

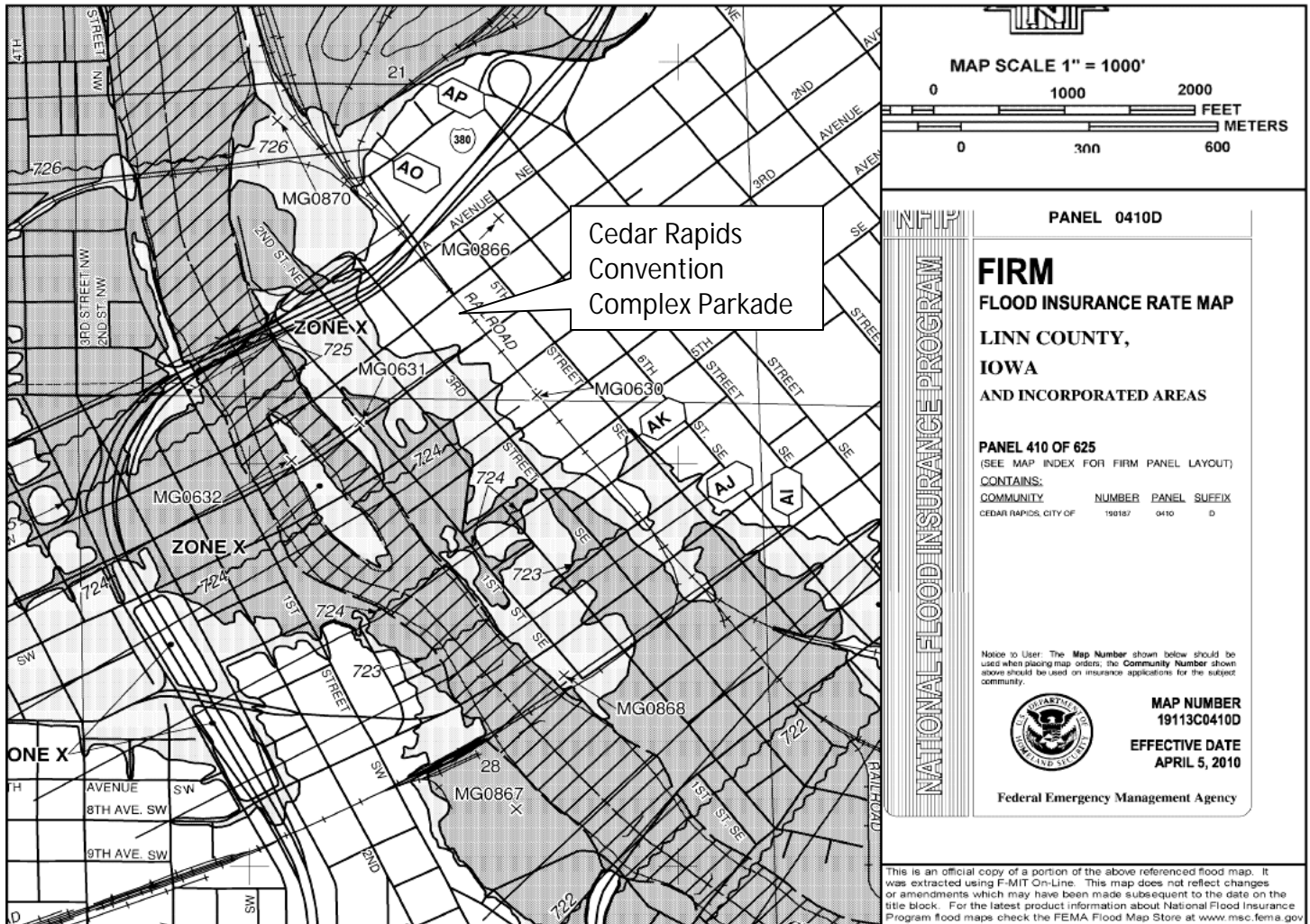
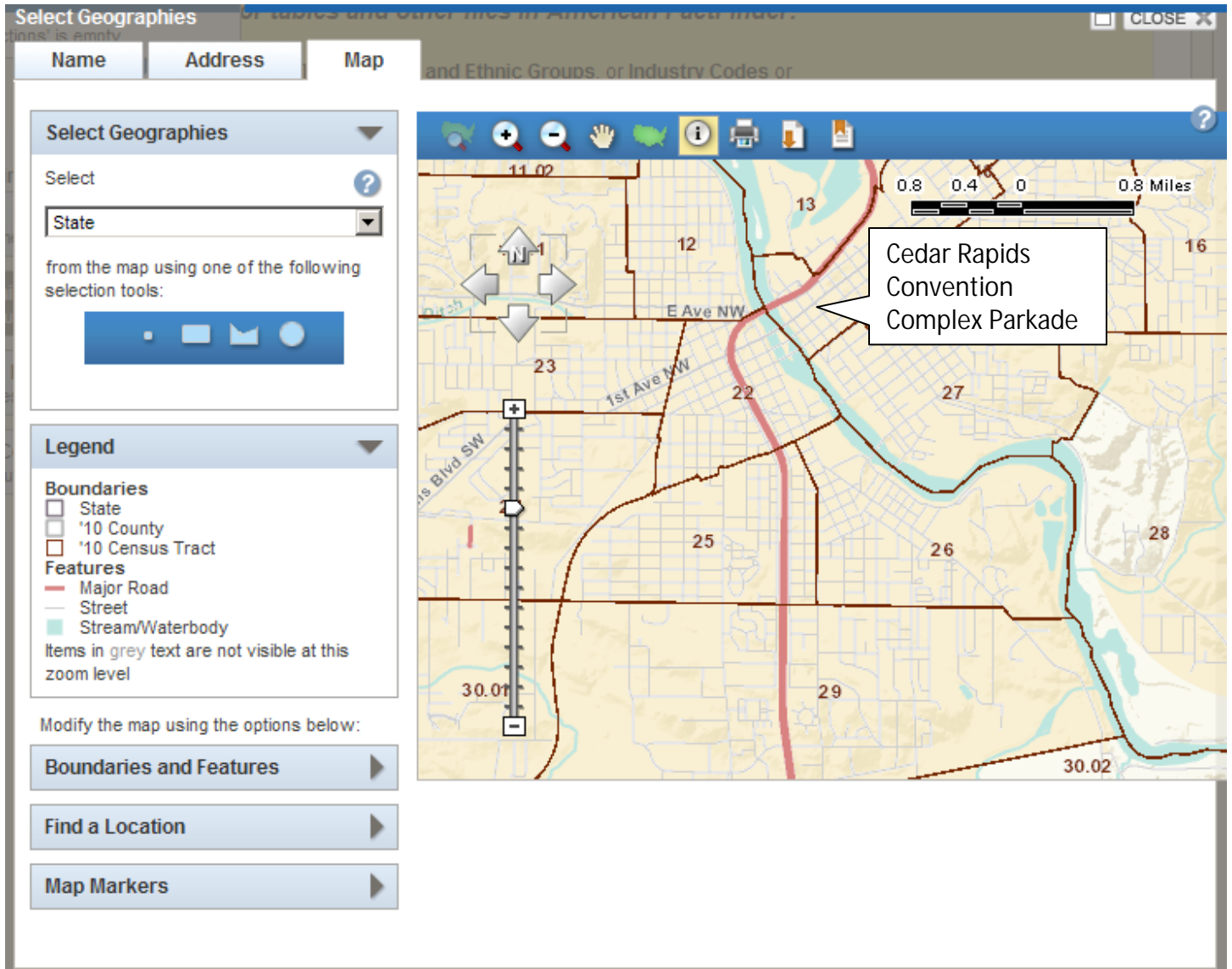


Figure 4: 2010 Census Tract Boundaries - Cedar Rapids Convention Complex Parkade



Source: American FactFinder, U.S. Census Bureau

Figure 5: Select Demographic Data - Cedar Rapids Convention Complex Parkade

	Census Tract 19	Cedar Rapids
2010 Housing Units	993	57,217
2010 Population	2,891	126,326
2010 Minority Population	485	15,182
2010 Minority Proportion	16.8%	12.0%
2010 Population reporting as Hispanic/Latino	182	4,176
2010 Proportion reporting as Hispanic/Latino	6.2%	3.3%
2010 Population by Age: Under 18	285	29,646
2010 Population by Age: Proportion under 18	9.8%	23%
2010 Population by Age: 18-64	2388	80,108
2010 Population by Age: Proportion 18-64	82.6%	63%
2010 Population by Age: Over 64	218	16,572
2010 Population by Age: Proportion over 64	7.6%	13%
2010 Median Age: Male	26.7	34
2010 Median Age: Female	22.3	36.8
2000: Median Household Income	\$50,781	\$43,704
2010 ACS: Poverty Percentage	35%	12.0%
2010 ACS: Poverty Margin of Error	± 9.6%	± 1%

Source: American FactFinder, U.S. Census Bureau

This EA uses data from both the 2000 and 2010 Decennial Censuses as not all data for 2010 has been released as of the writing of this EA. The American Community Survey (ACS) is also used for rough comparison as the data is more current however the data uses smaller sample sizes and has higher margins of error than the data used in the decennial censuses. As the 2008 flood heavily impacted all four Census Tracts in this EA; the 2010 Census address canvassing operation began in March 2009; and as housing acquisition funded through FEMA and Community Development Block Grants (CDBG) have been in progress since before the Census process began, the demographics of this area should be understood as dynamic and may vary from the 2010 Census data as released. Due to the sample size and the methodology used by the ACS, the real levels of population considered in poverty could vary considerably. The estimated proportion of the population of Cedar Rapids determined to be in poverty has increased with a much narrower margin of error due to the significantly larger sample size.

Figure 6: Cedar Rapids Zoning Map Excerpt – Cedar Rapids Convention Complex Parkade



Source: Cedar Rapids Assessor GIS, Zoning Overlay: http://crgis.cedar-rapids.org/Freeance/Client/PublicAccess1/index.html?appconfig=City_Assessor_GIS.

Note: A summary of the zoning designations applicable to Figures 10-11 can be found in the City's Zoning Ordinance Chapter 32.03 available online at: <http://library.municode.com/HTML/16256/level1/CH32ZO.html#TOPTITLE>.