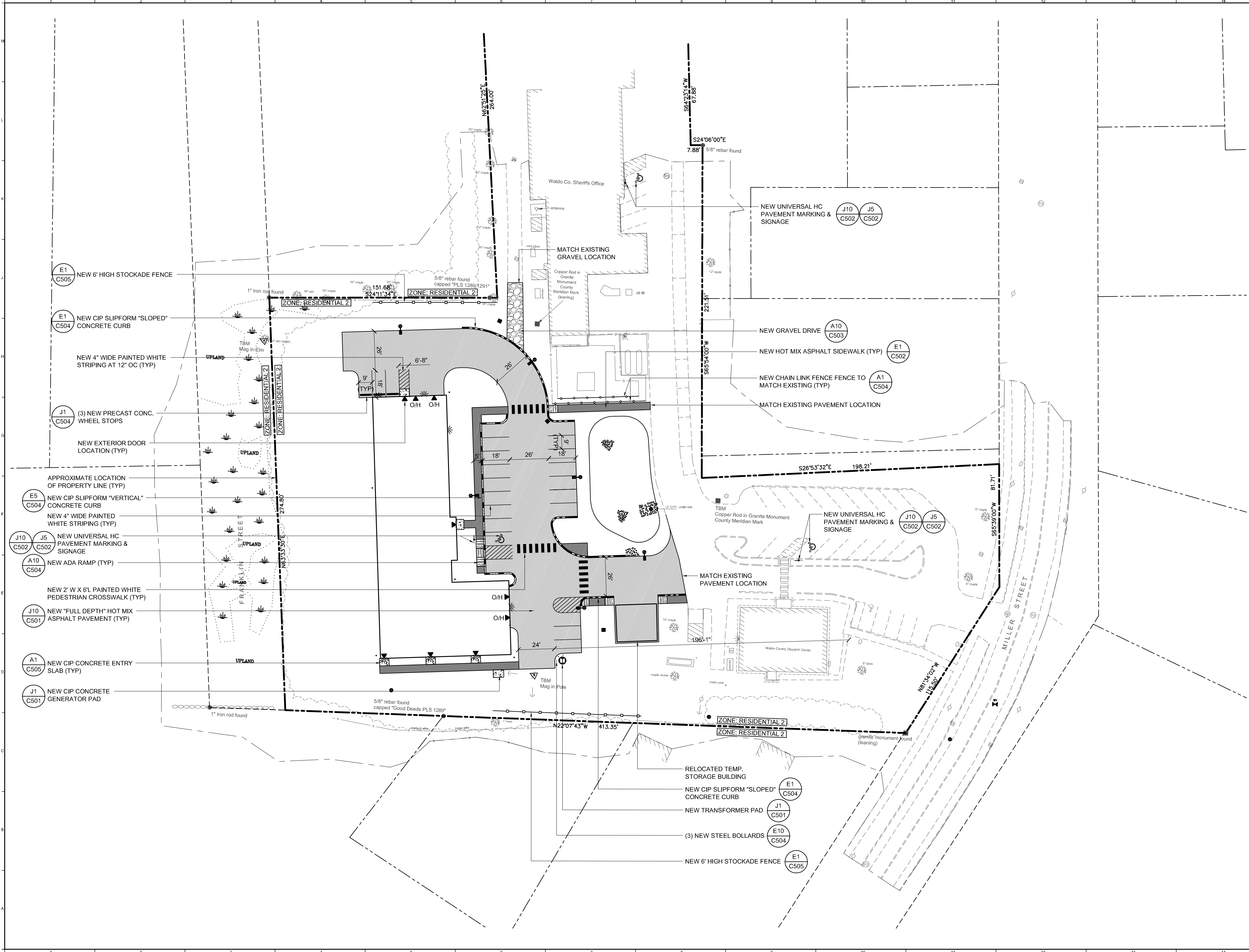


LAYOUT NOTES:
1. SEE NOTES L1 THROUGH L3 ON SHEET G1006 FOR ADDITIONAL LAYOUT INFORMATION.

7.1.13.

Mar. 24, 2010 - 12:43pm
I:\3501-3600\357100 Waldo County Emergency Operations Center\2 Design Phase\Working Drawings and Documents\Design Drawings\Site\357100-SP101.dwg Lab\richards



LEGEND	
EXISTING	PROPOSED
	WETLAND AREA
	TRELLINE
	UTILITY POLE
	STREET LIGHTING
	WATER SHUTOFF GATE VALVE
	TRANSFORMER PAD
	SEWER MANHOLE
	CATCH BASIN
	FIRE HYDRANT
	PAVEMENT
	SIDEWALK

REV.	DESCRIPTION	DATE
1	APPROVAL DRAWINGS	03.24.10

APPROVAL DRAWINGS
03.24.10

CURRENT ISSUE STATUS:

WBRC
ARCHITECTS • ENGINEERS
WWW.WBRCAE.COM
BANGOR, MAINE 207-947-481
PORTLAND, MAINE 207-429-481
SARASOTA, FLORIDA 941-373-1983

WALDO COUNTY EMERGENCY OPERATIONS CENTER
PROJECT: BELFAST, MAINE

SITE LAYOUT PLAN

SHEET TITLE:	357100-SP101	
WBRC CAD FILE:	3571.00	
PROJECT No.:	3571.00	GRAPHIC SCALE: 0"
SCALE:	1"=30'	1"
PM:	MGC	SHEET No.:
DRAWN BY:	TAR	CP101
A/E OF RECORD:	JSK	

7.2. Photographs

- 7.2.1. Aerial Photograph of Proposed Project Site
- 7.2.2. Aerial Photograph of Proposed Project Site with markings
- 7.2.3. Looking northeast from Proposed Project Site
- 7.2.3.1. Looking northeast from Proposed Project Site (Spring)
- 7.2.4. Looking northwest from Proposed Project Site
- 7.2.4.1. Looking northwest from Proposed Project Site (Spring)
- 7.2.5. Looking north towards Proposed Project Site
- 7.2.6. Looking southeast from Proposed Project Site
- 7.2.7. Looking south from Proposed Project Site
- 7.2.8. Looking east from Proposed Project Site
- 7.2.9. Waldo County Public Safety complex





County Sheriff's Office,
Jail and old EOC

Red Line indicates
the limits of the
project, to include
new building and
parking areas

Belfast

County
Communications
Center



11/04/2009 12:28 PM



05/20/2010 11:14 AM



11/04/2009 12:27 PM



05/20/2010 11:10 AM



11/04/2009 12:28 PM



11/04/2009 12:29 PM

7.2.7.

County Comm
Center

11/04/2009 12:29 PM



7.2.8.



11/04/2009 12:38 PM

**Waldo County Emergency Operations Center
Environmental Assessment**

This page left blank