



2015 NEHRP Recommended Seismic Provisions: Training and Instructional Materials

FEMA P-1052/July 2016



FEMA



Inset Cover Photograph: Willard Marriott Library located on the campus of the University of Utah.
Credit: Kelly Petersen. Used with permission.

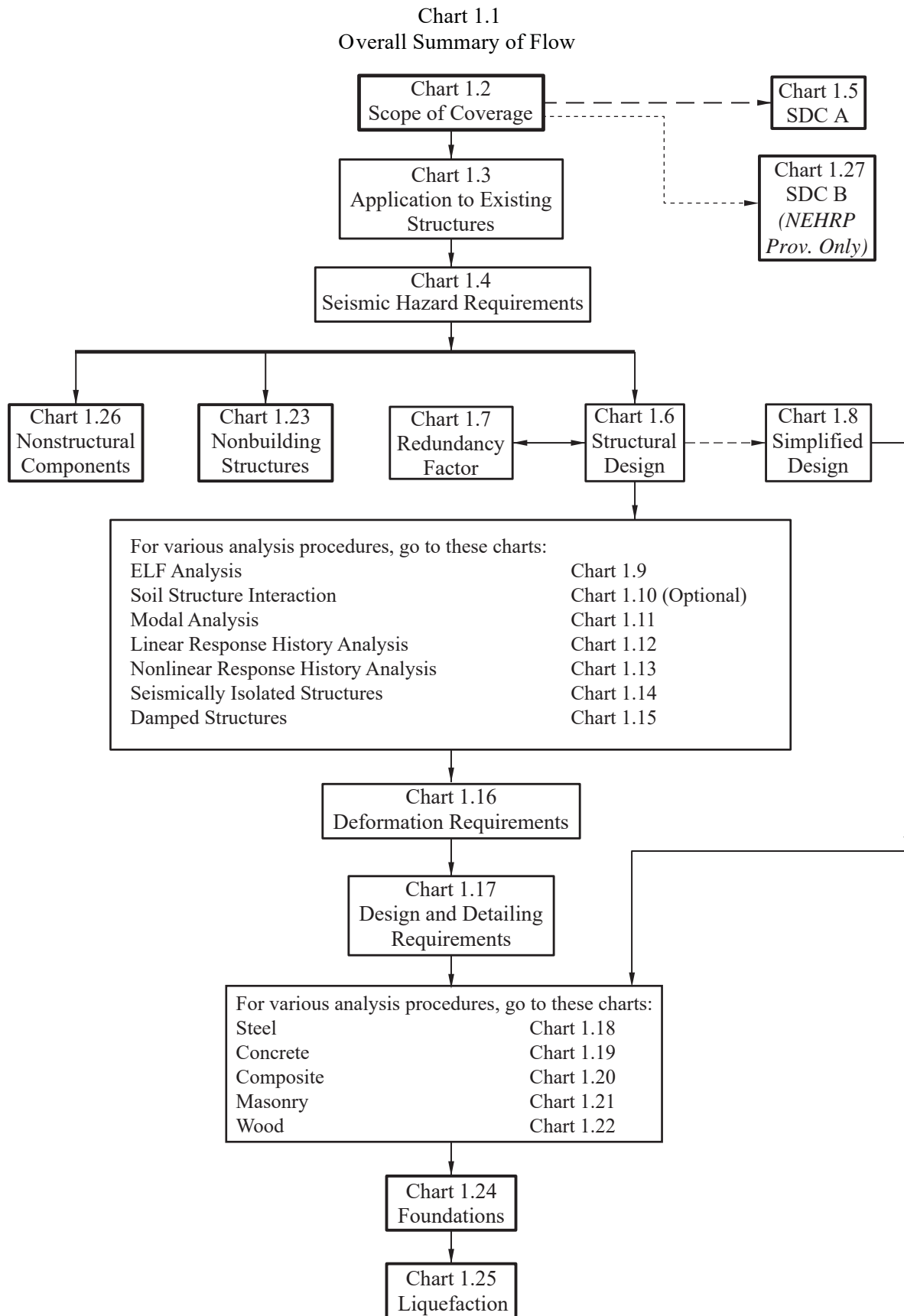
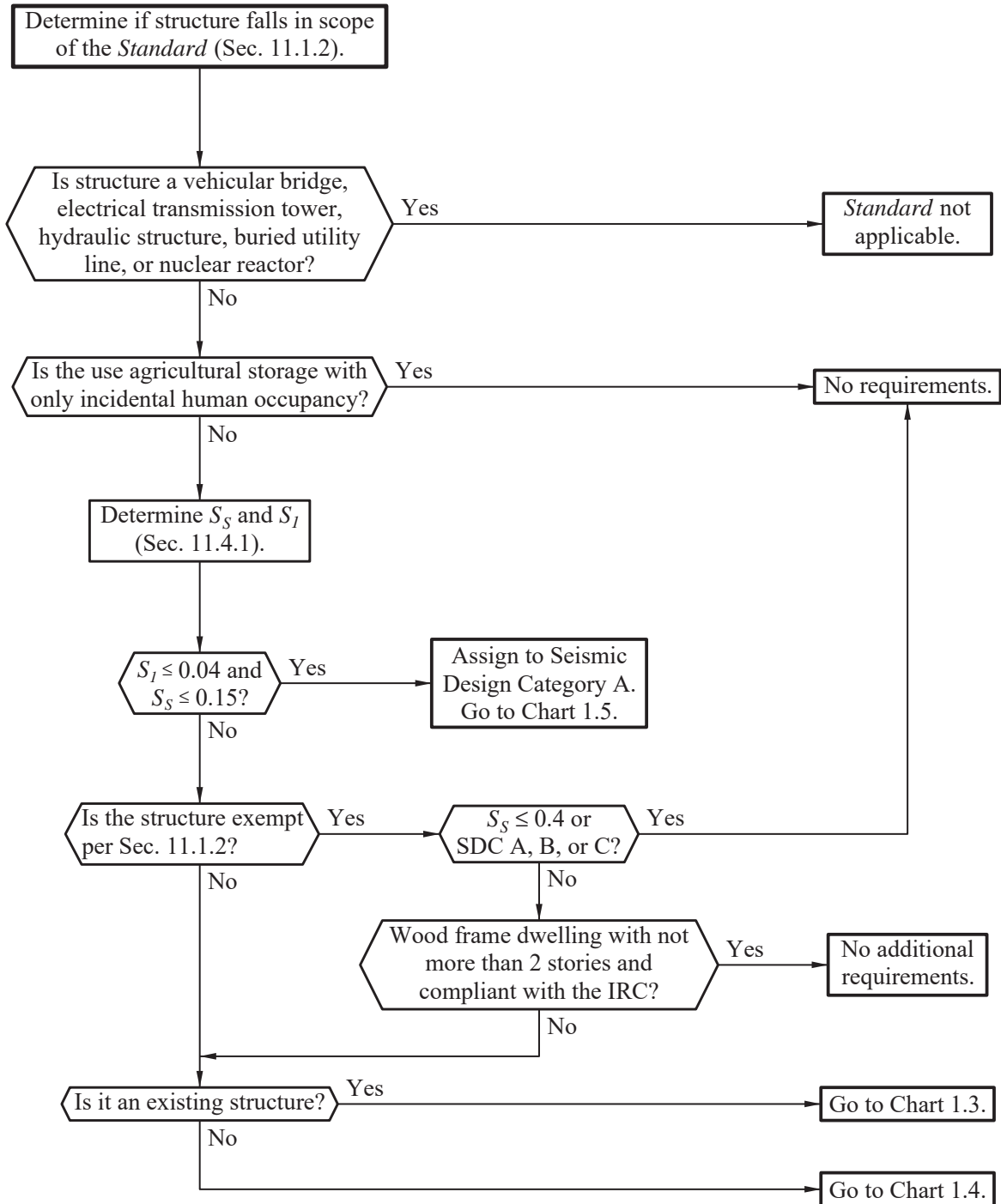
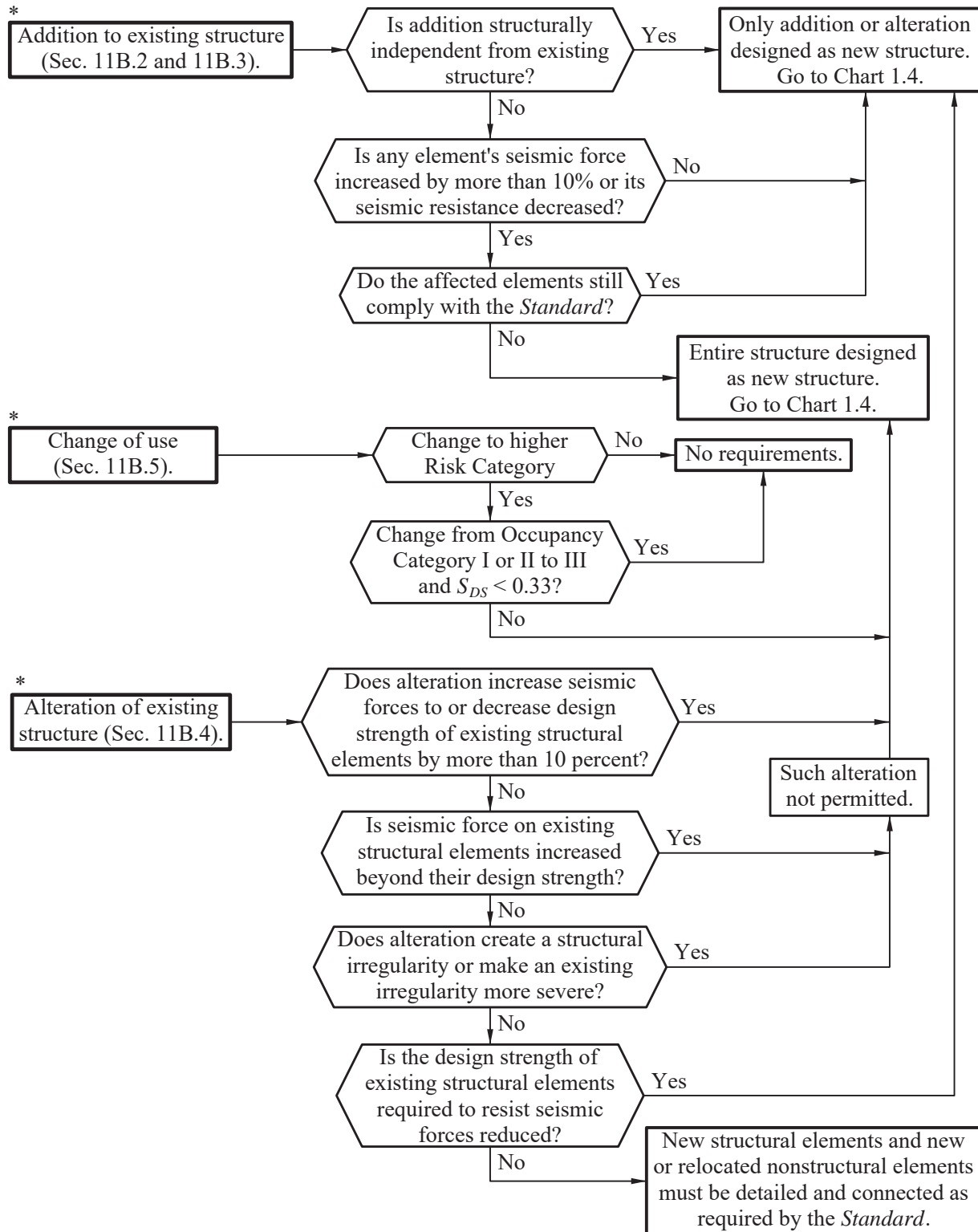


Chart 1.2
Scope of Coverage



**Chart 1.3
Application to Existing Structures**



* The *Standard* applies to existing structures only in the cases of additions to, changes of use in, and alterations of such structures.

Chart 1.4
Seismic Hazard Requirements and Seismic Design Category

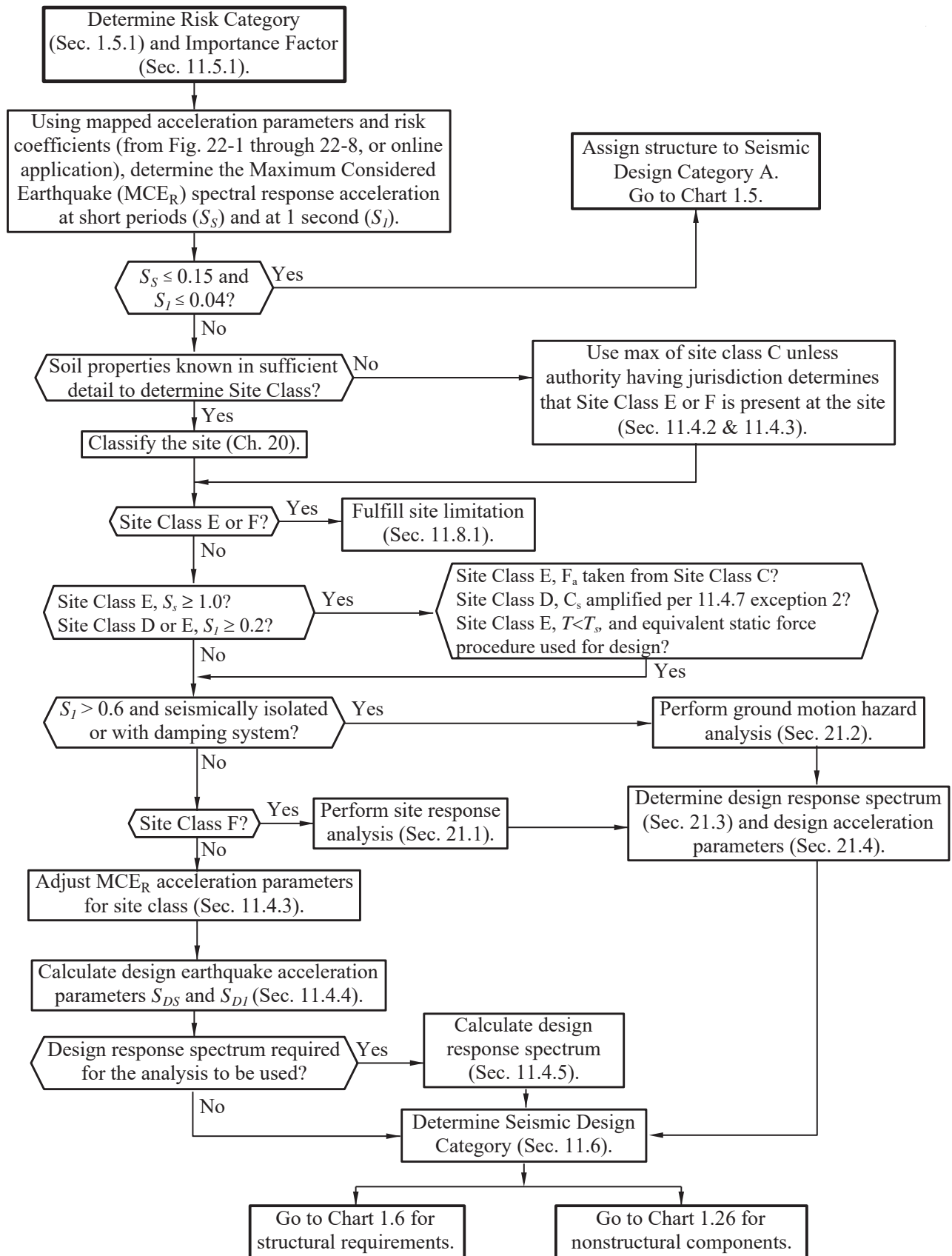
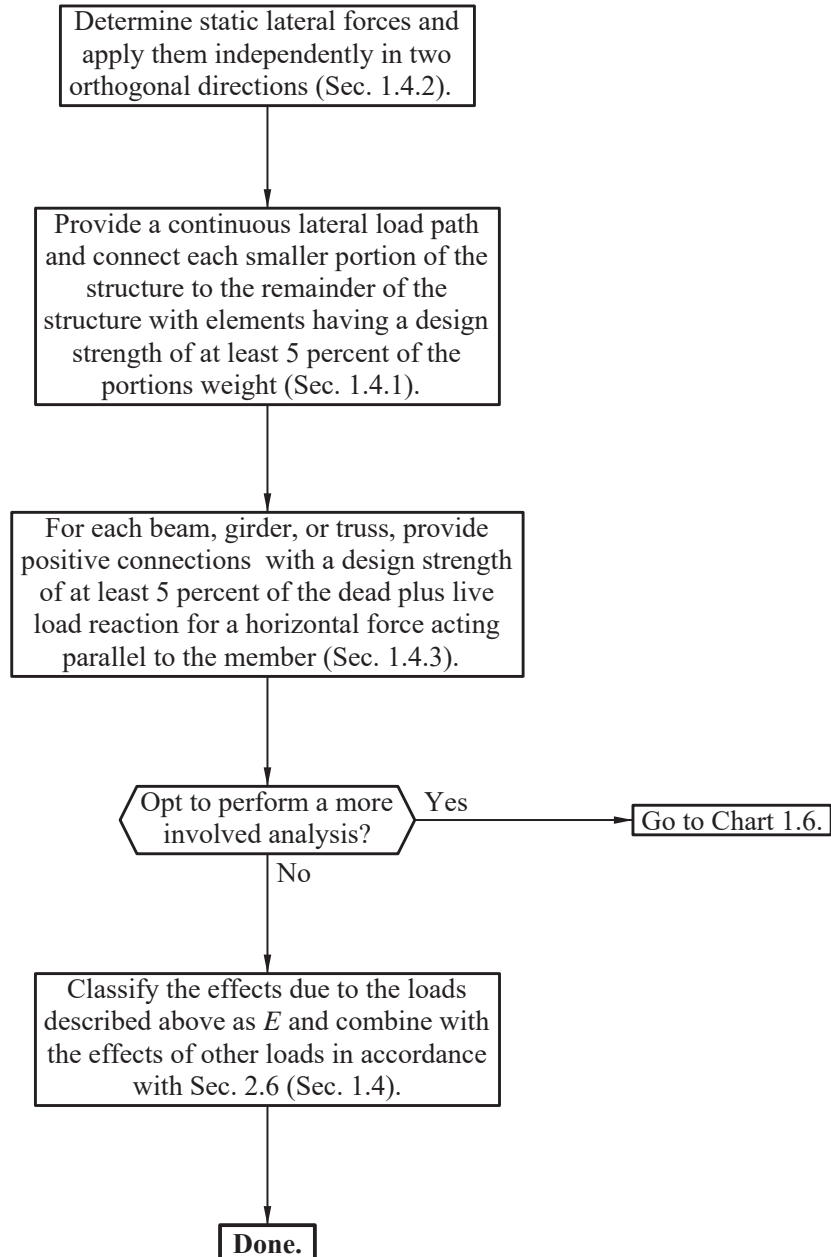
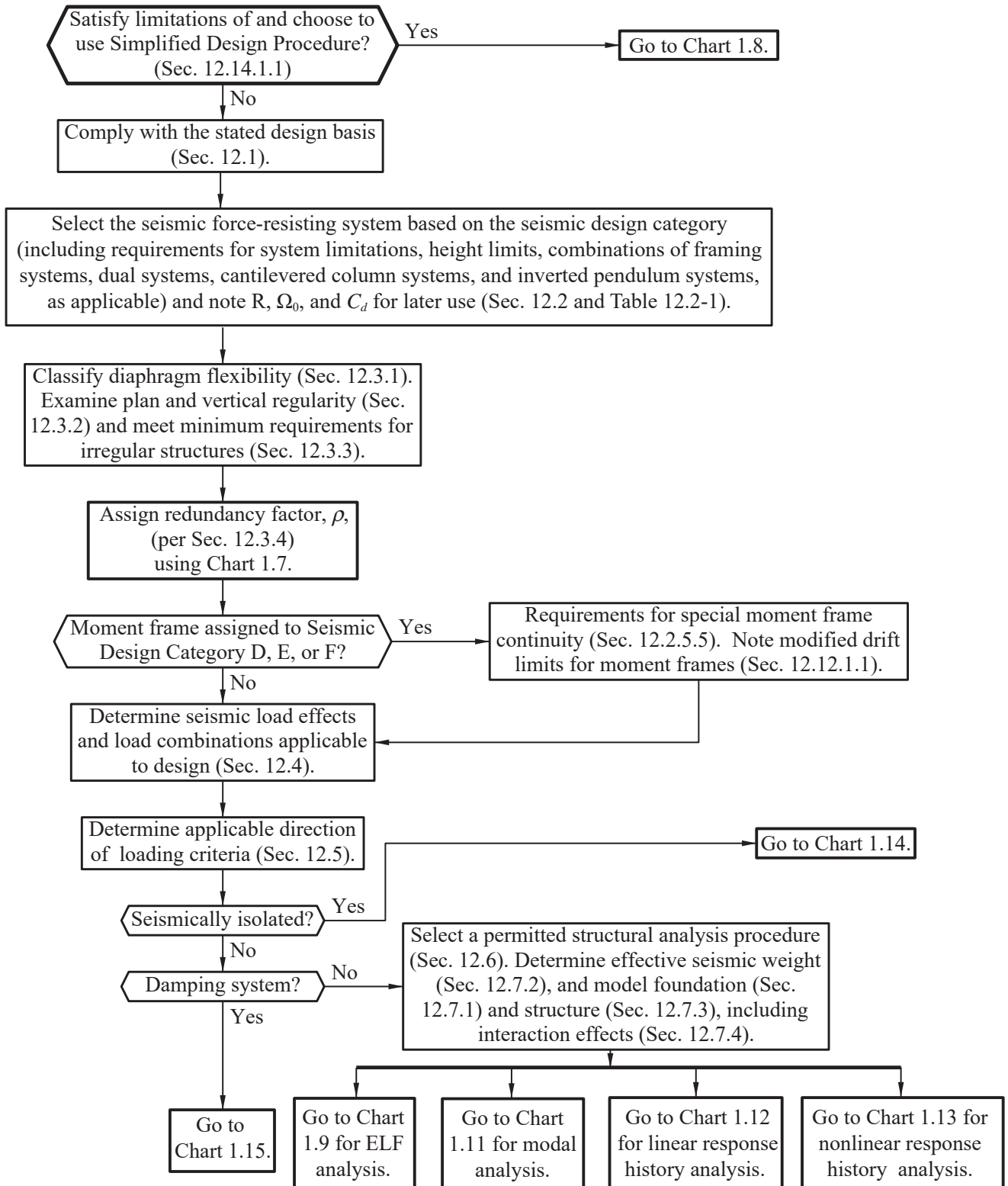


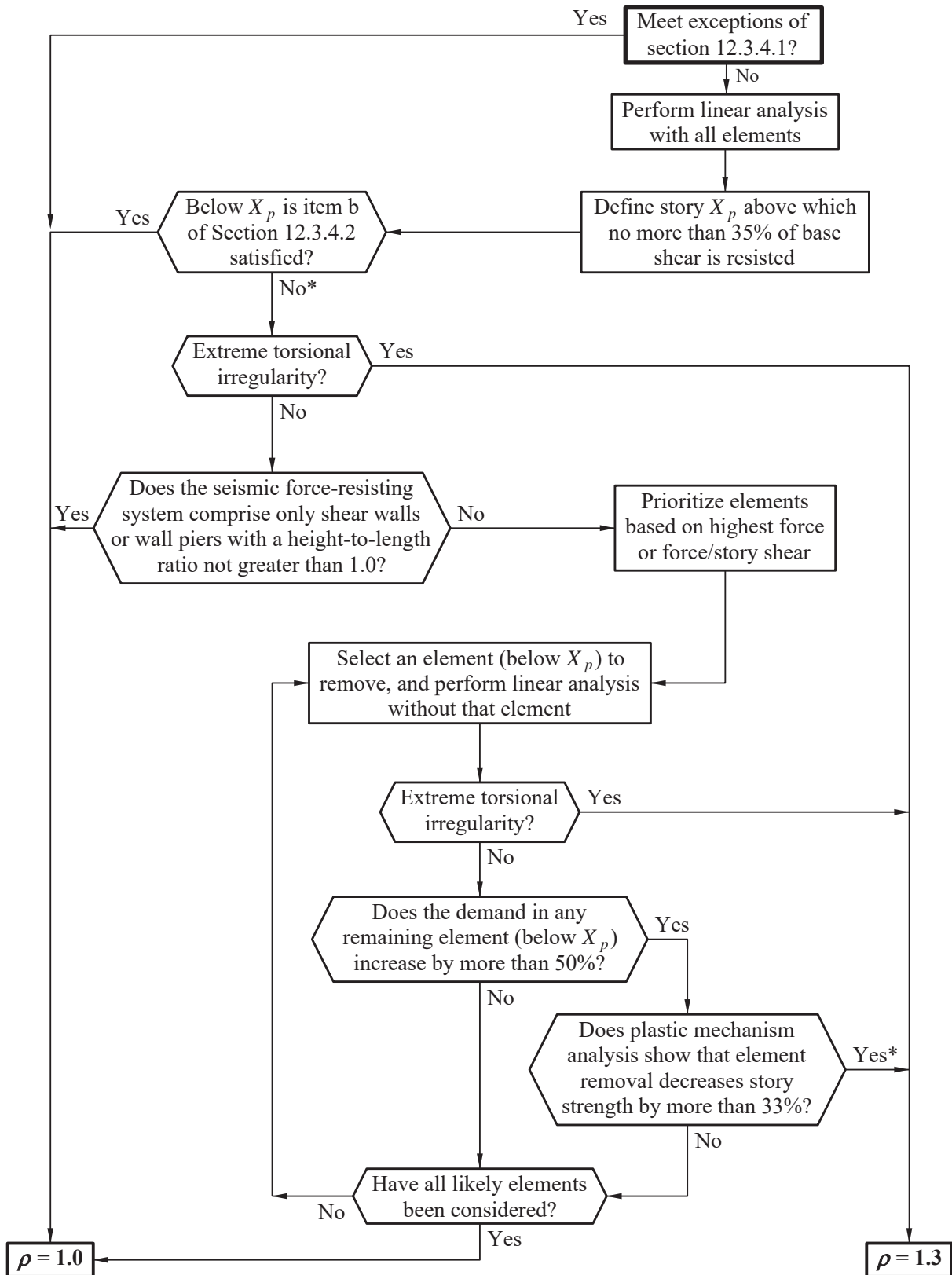
Chart 1.5
Seismic Design Category A



**Chart 1.6
Structural Design**



**Chart 1.7
Redundancy Factor**



* or not considered

**Chart 1.8
Simplified Design Procedure**

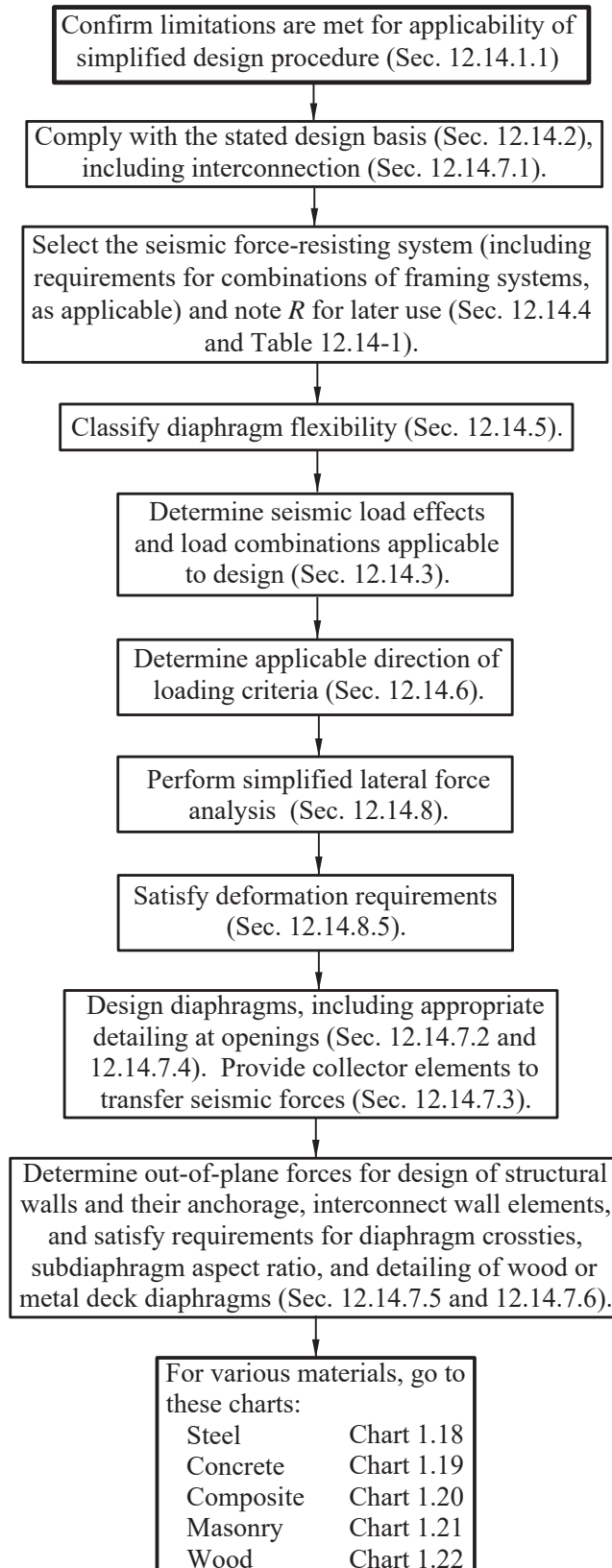


Chart 1.9
Equivalent Lateral Force (ELF) Analysis

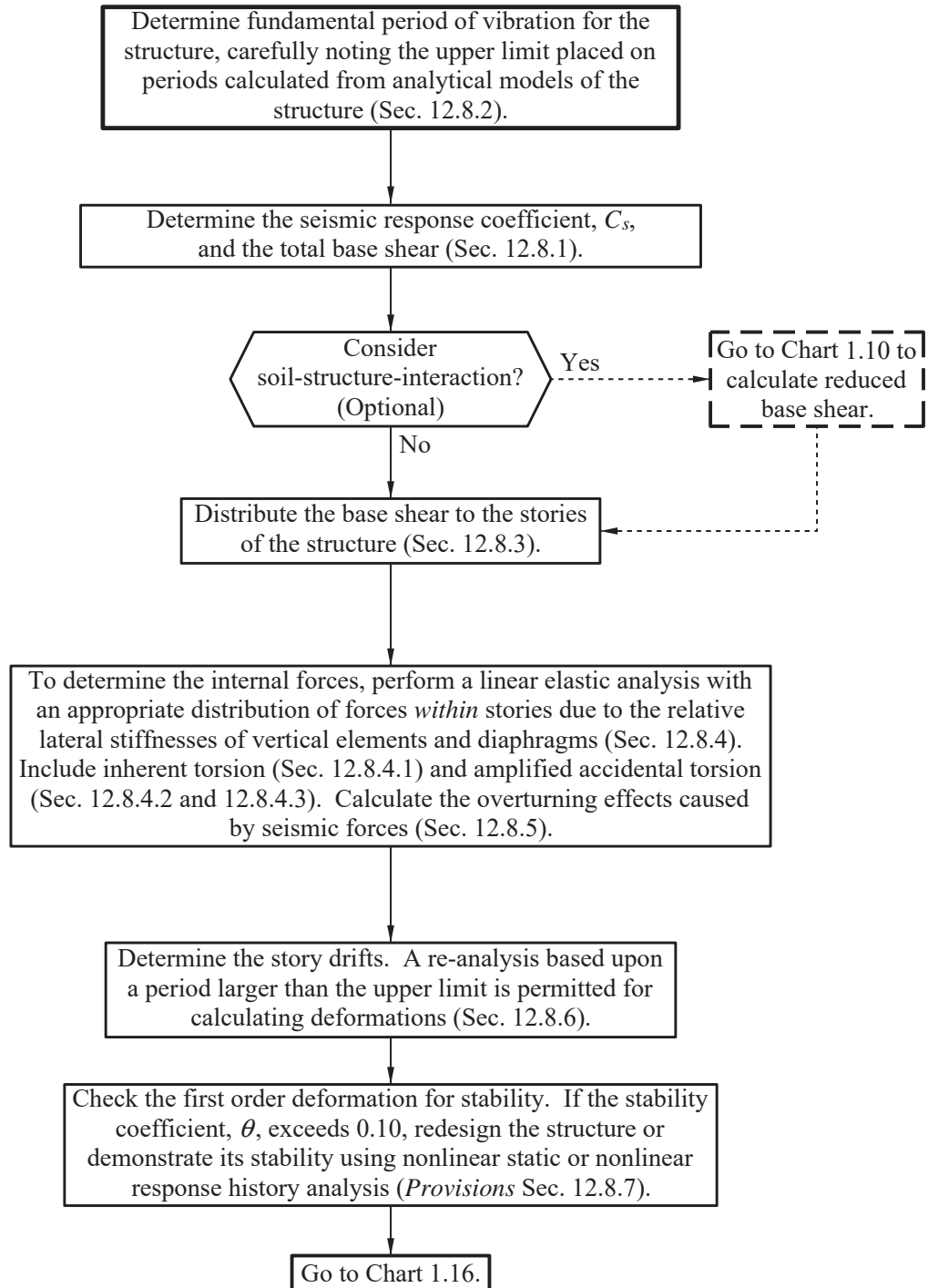


Chart 1.10
Soil-Structure Interaction (SSI)

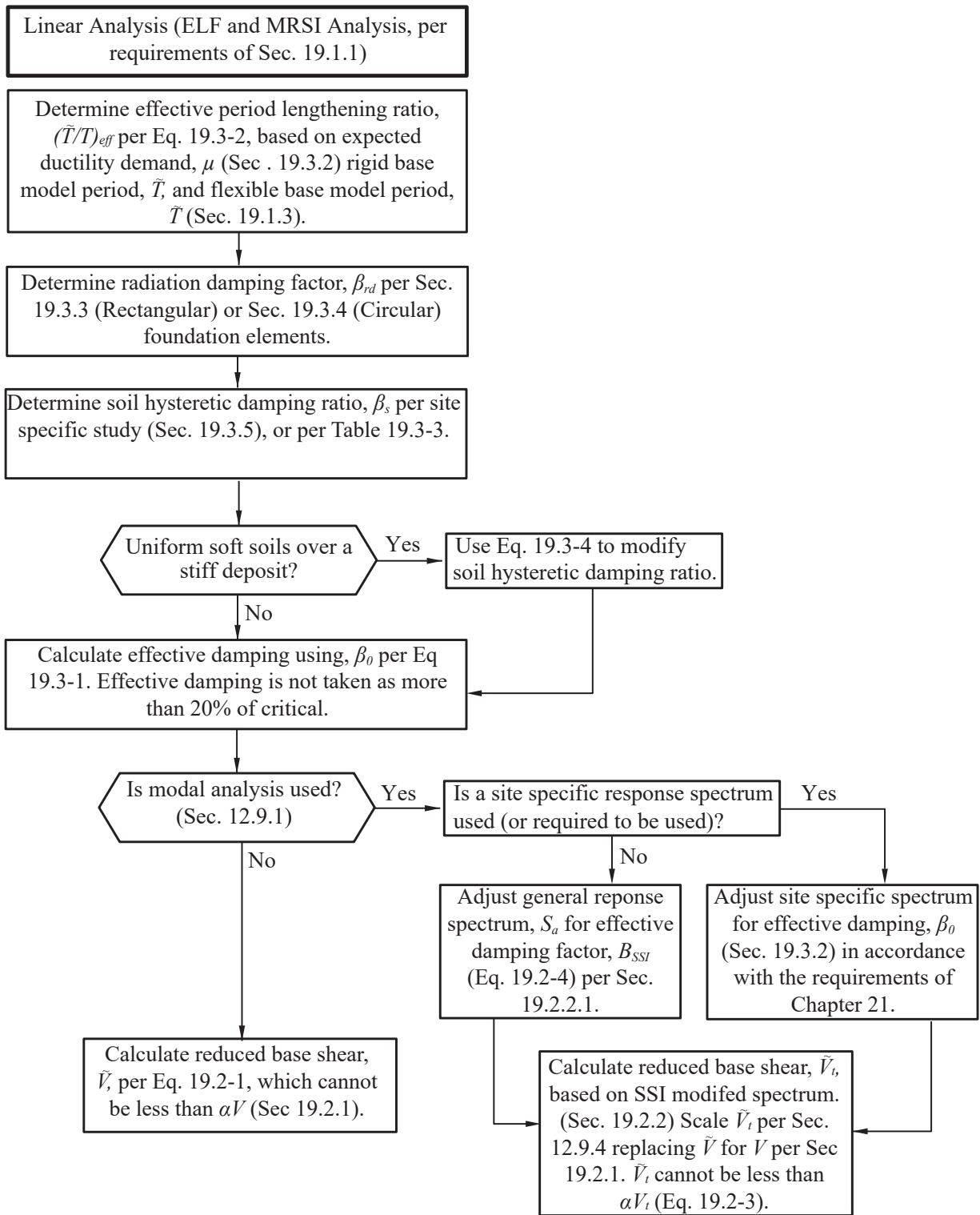
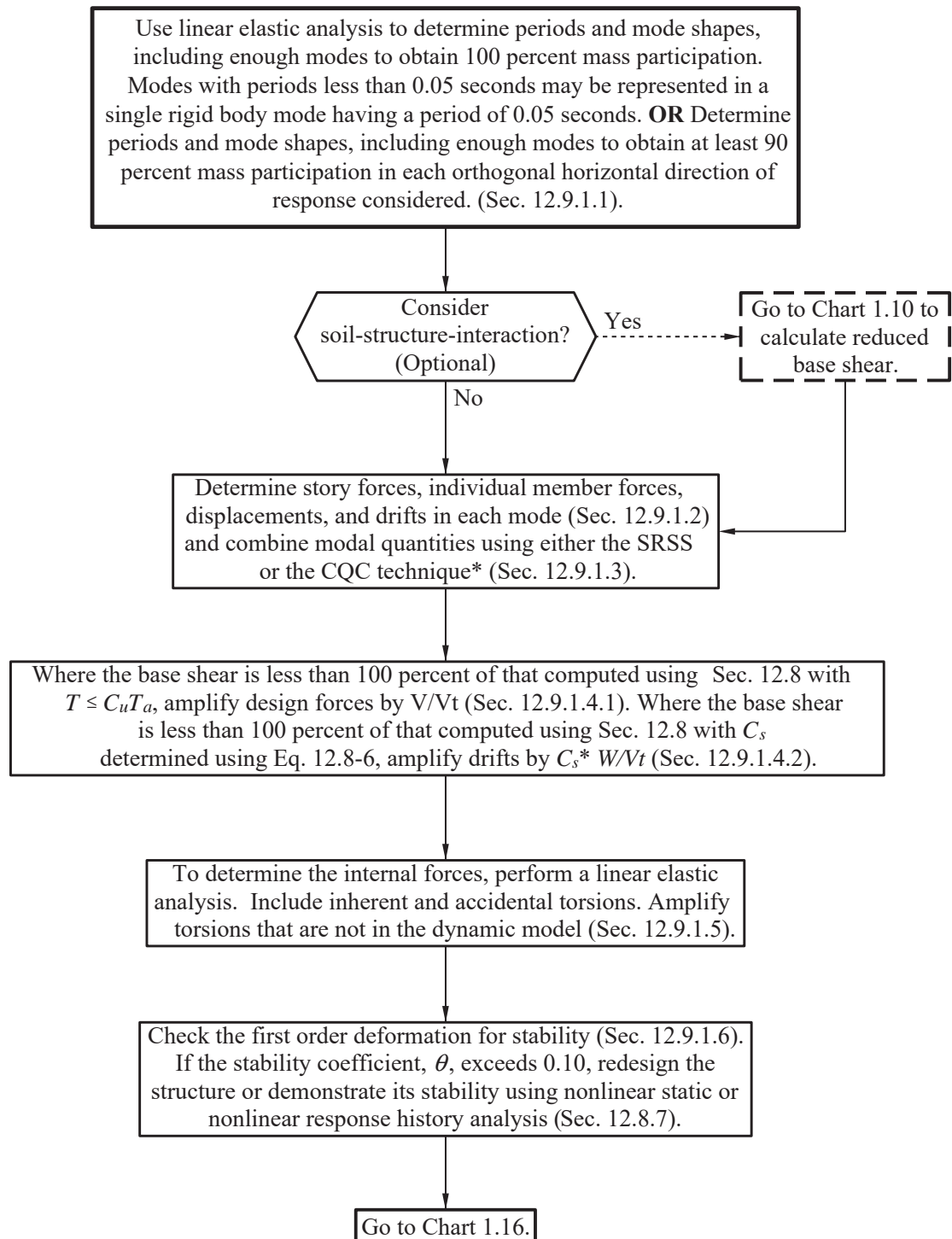


Chart 1.11
Modal Response Spectrum Analysis



*As indicated in the text, use of the CQC technique is required where closely spaced periods in the translational and torsional modes will result in cross-correlation of the modes.

Chart 1.12
Linear Response History Analysis

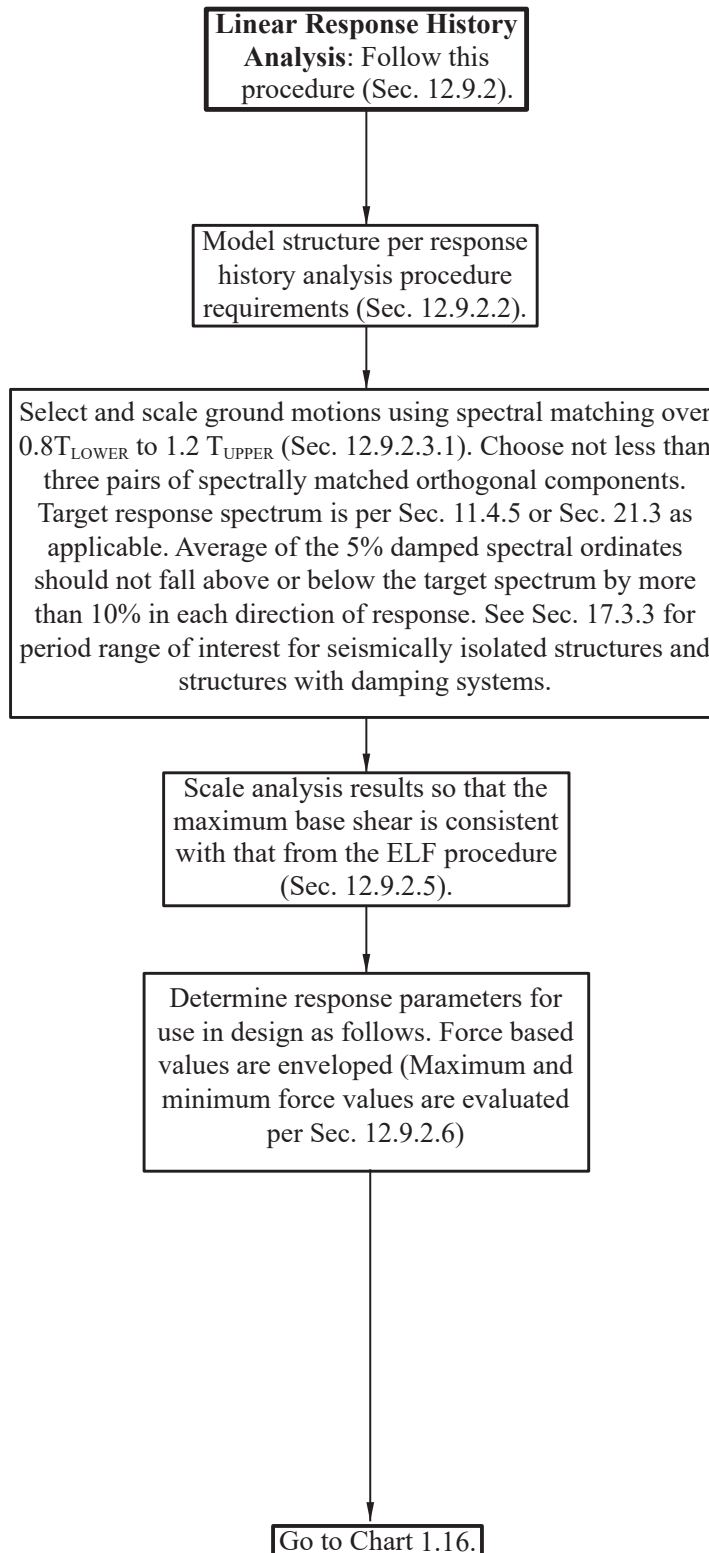


Chart 1.13
Nonlinear Response History Analysis

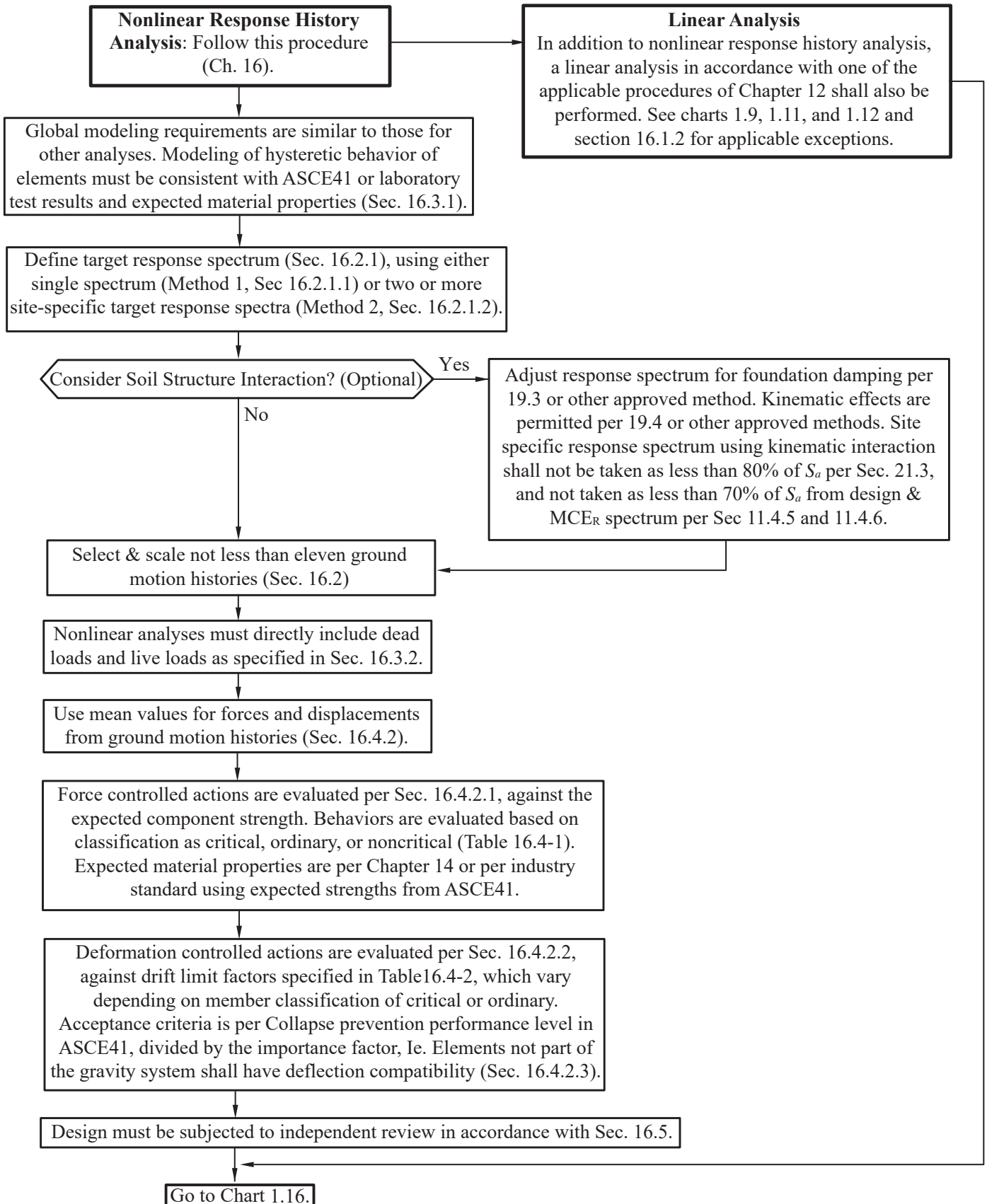


Chart 1.14
Seismically Isolated Structures

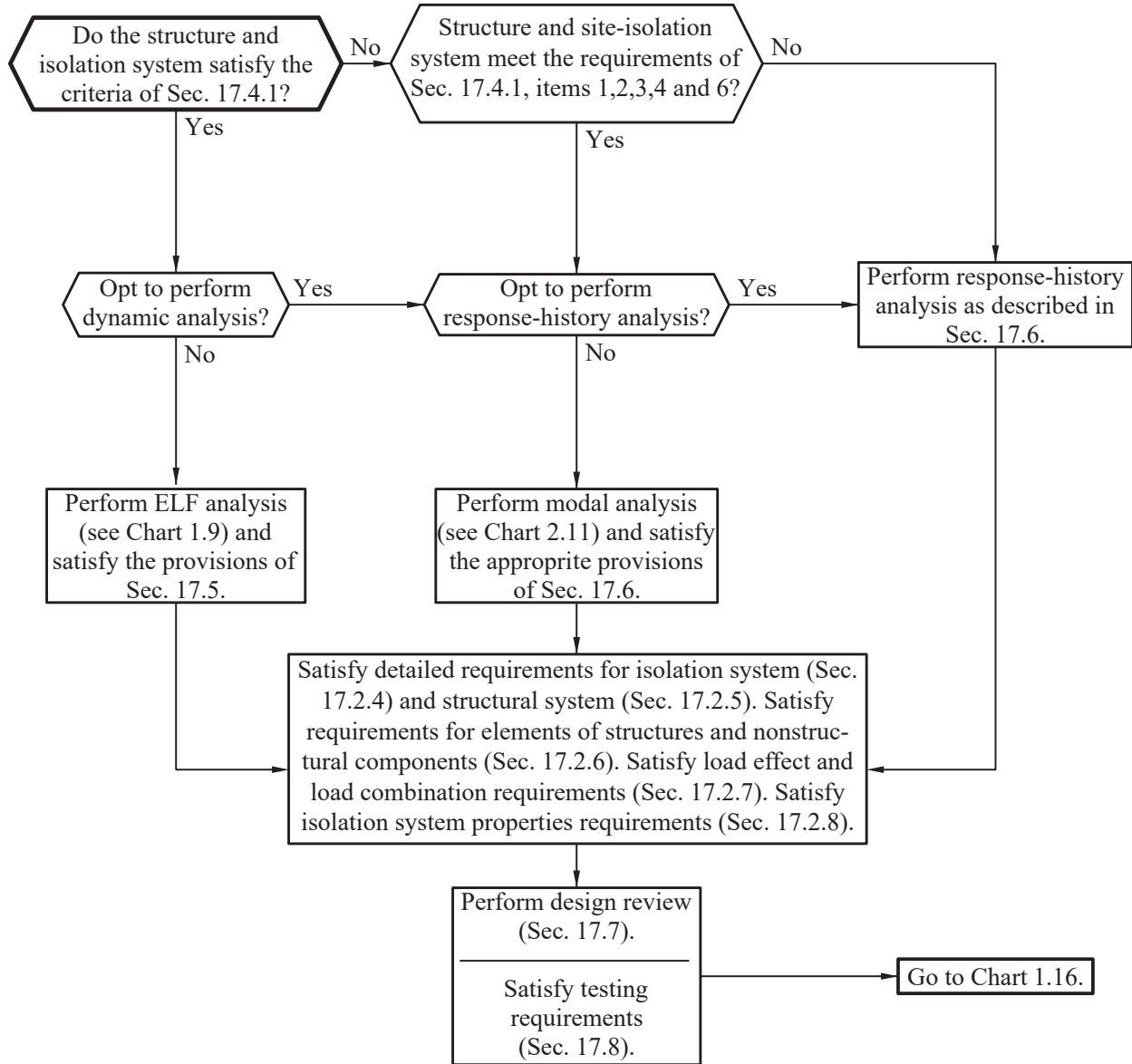


Chart 1.15
Structures with Damping Systems

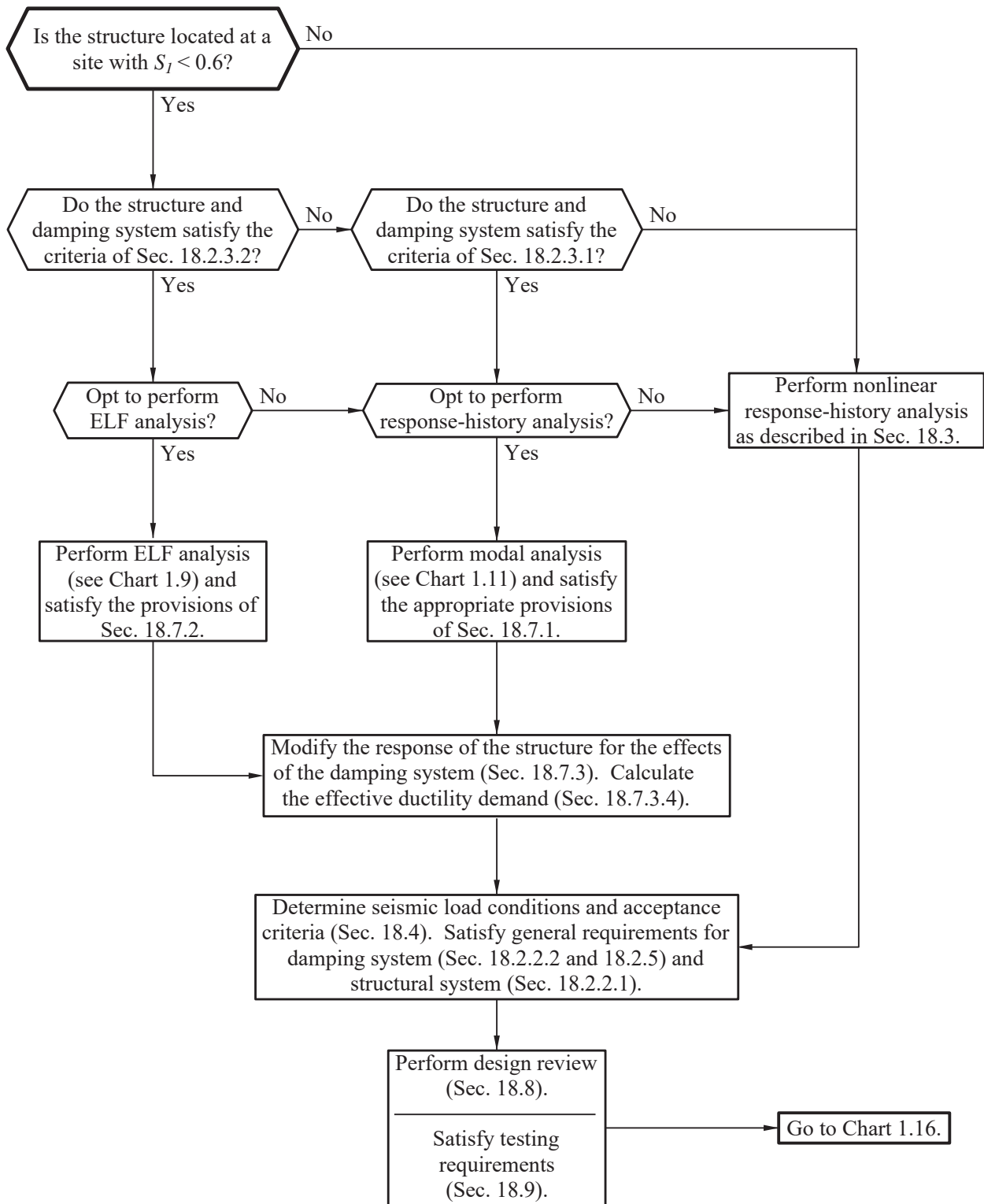


Chart 1.16
Deformation Requirements

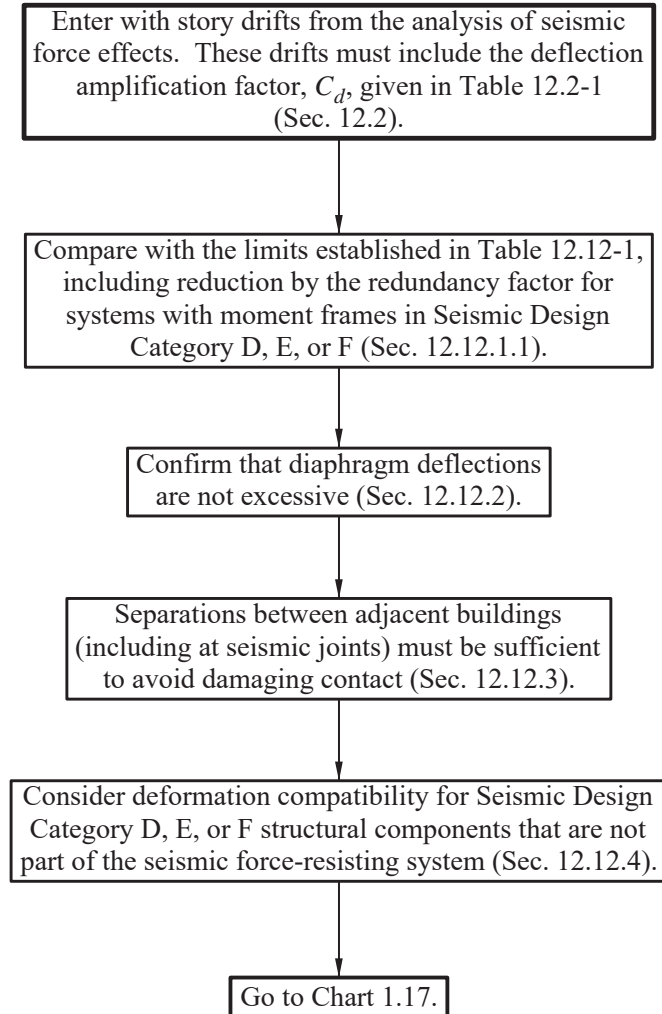


Chart 1.17
Design and Detailing Requirements

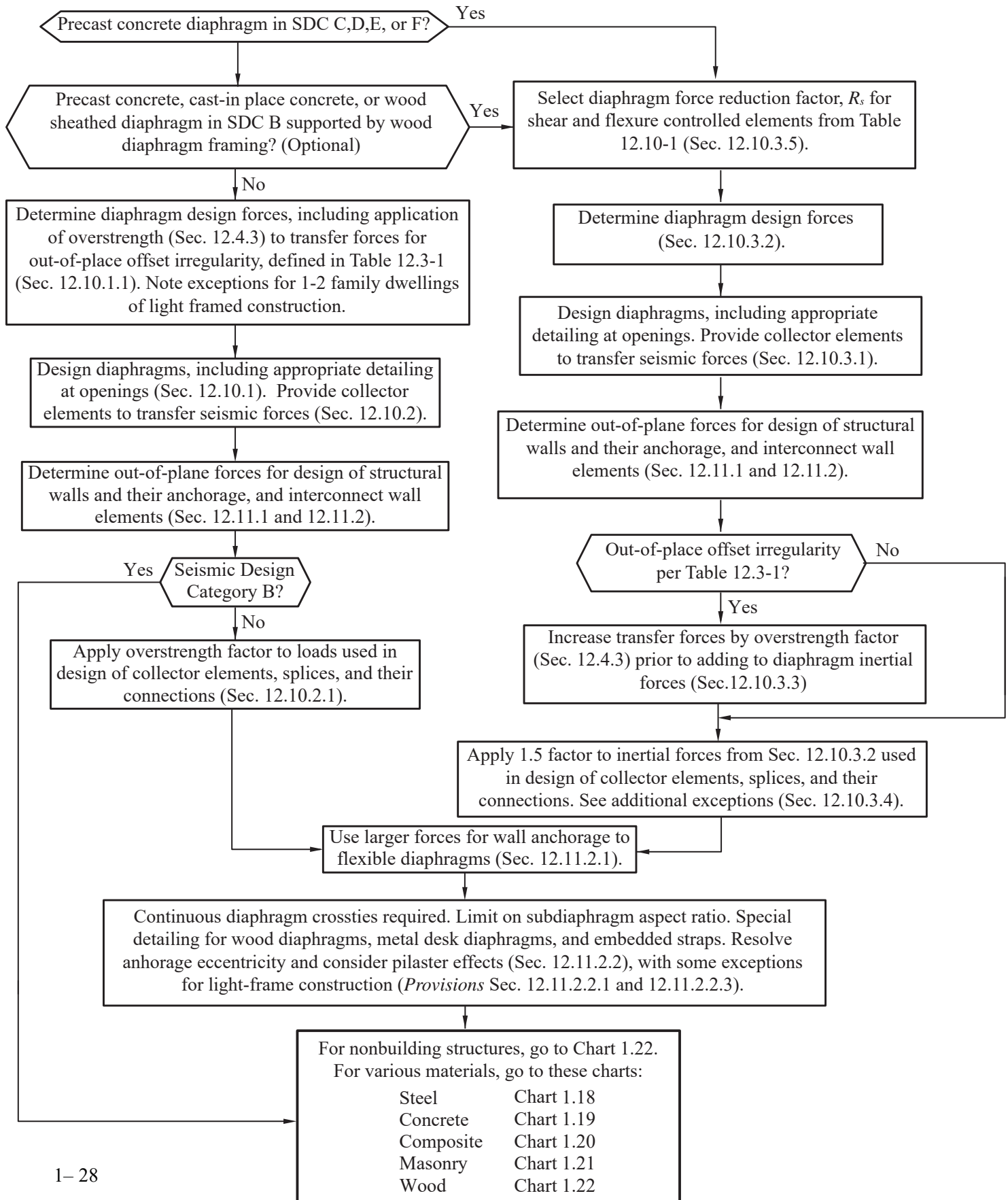


Chart 1.18
Steel Structures

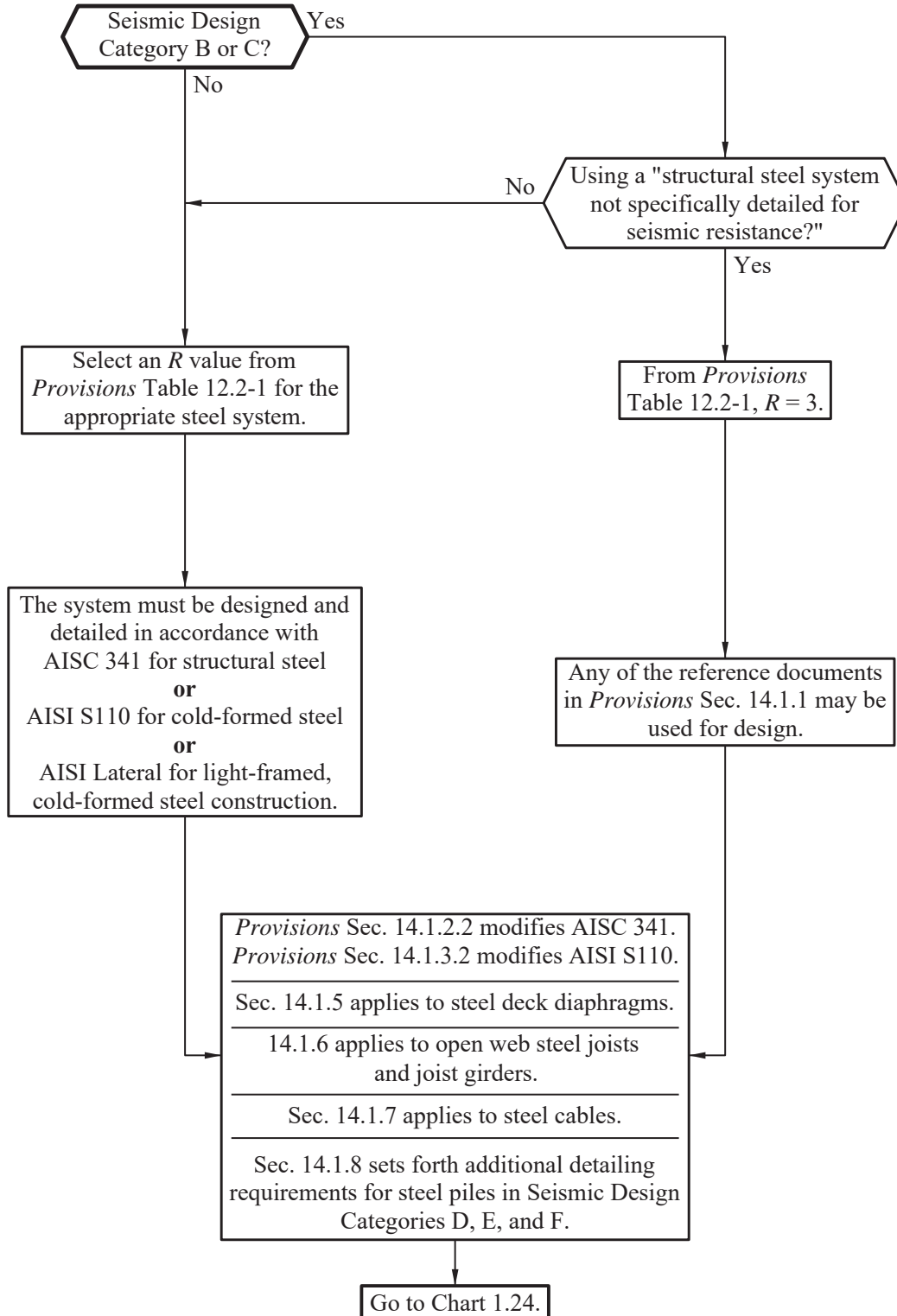


Chart 1.19
Concrete Structures

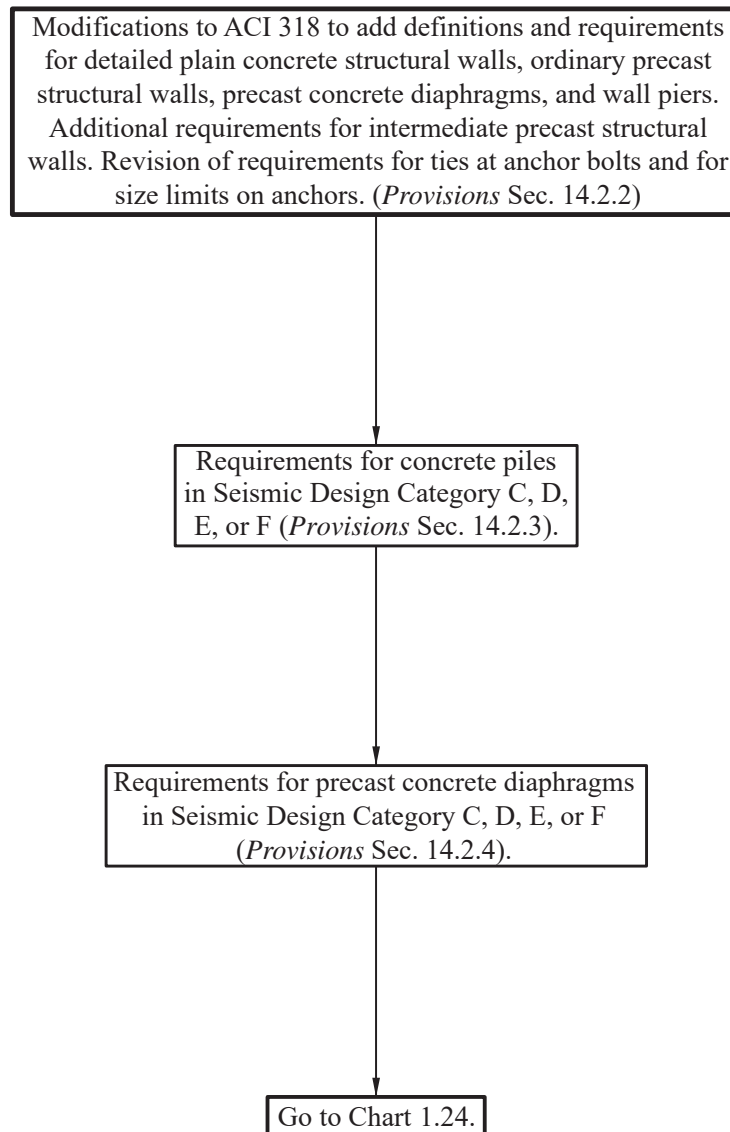


Chart 1.20
Composite Steel and Concrete Structures

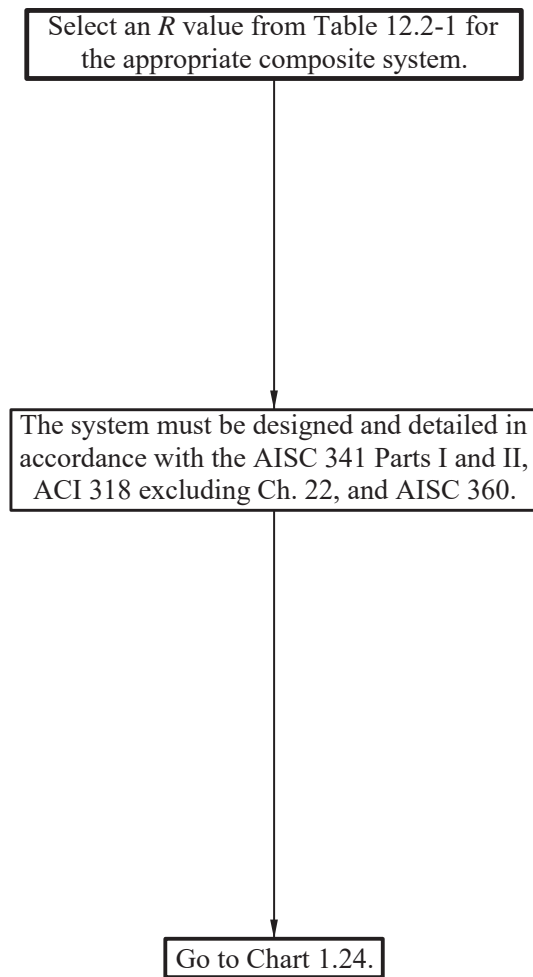


Chart 1.21
Masonry Structures

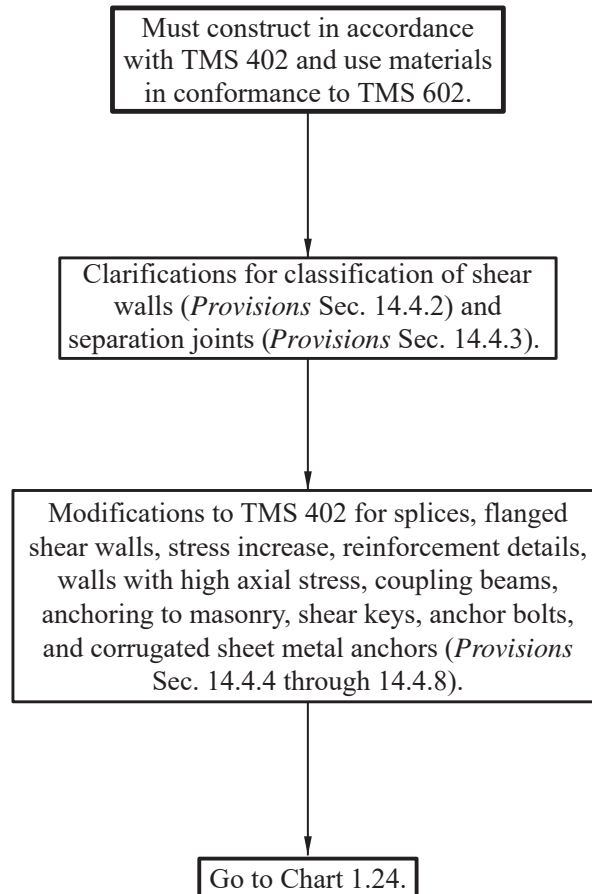


Chart 1.22
Wood Structures

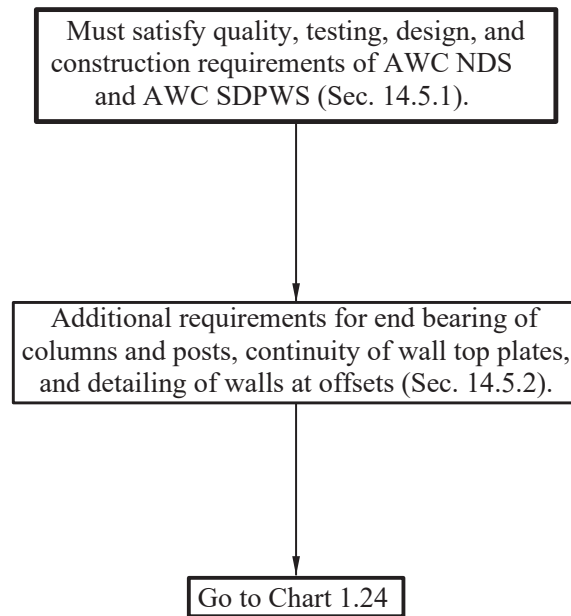


Chart 1.23
Non-building Structures

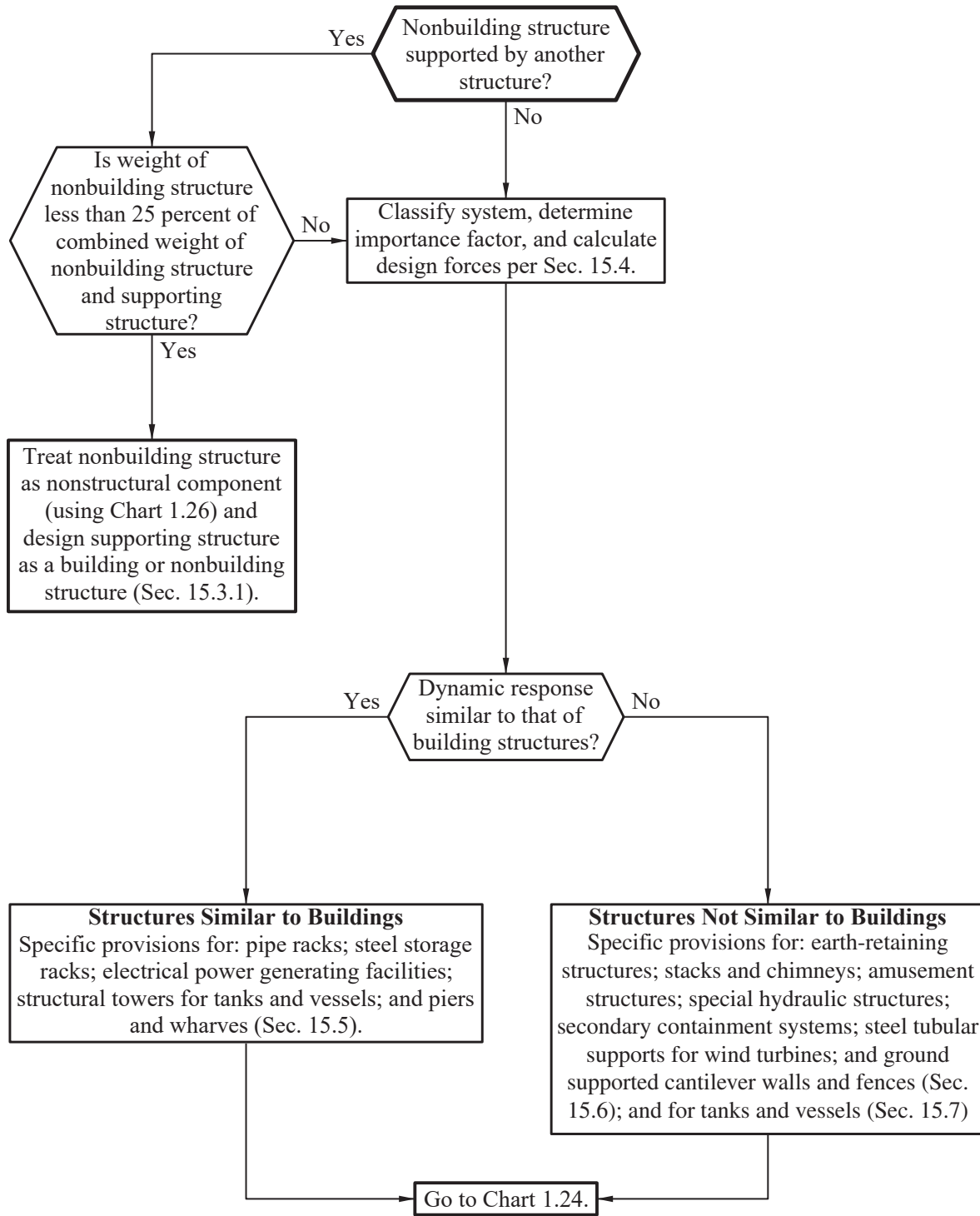
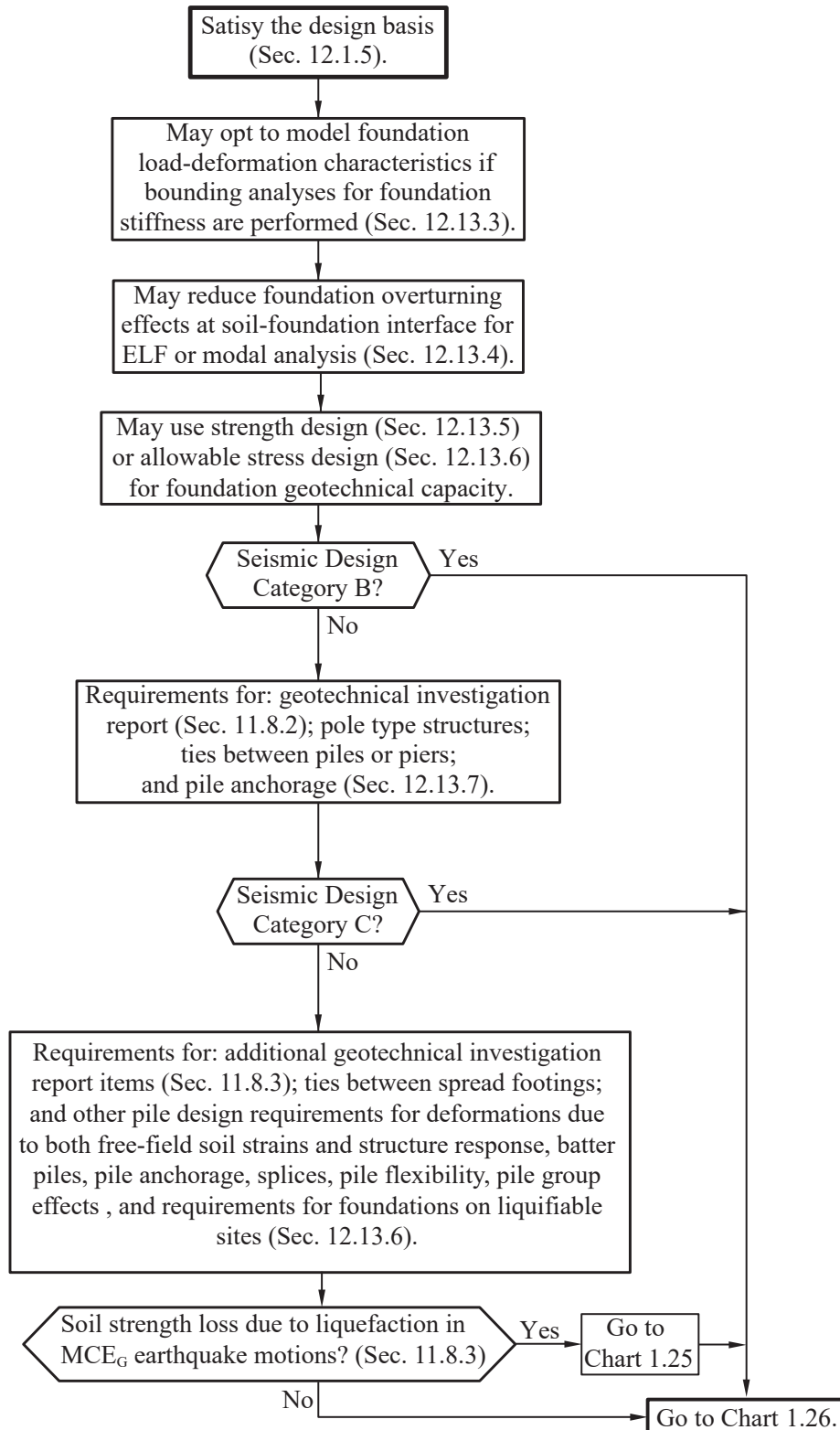
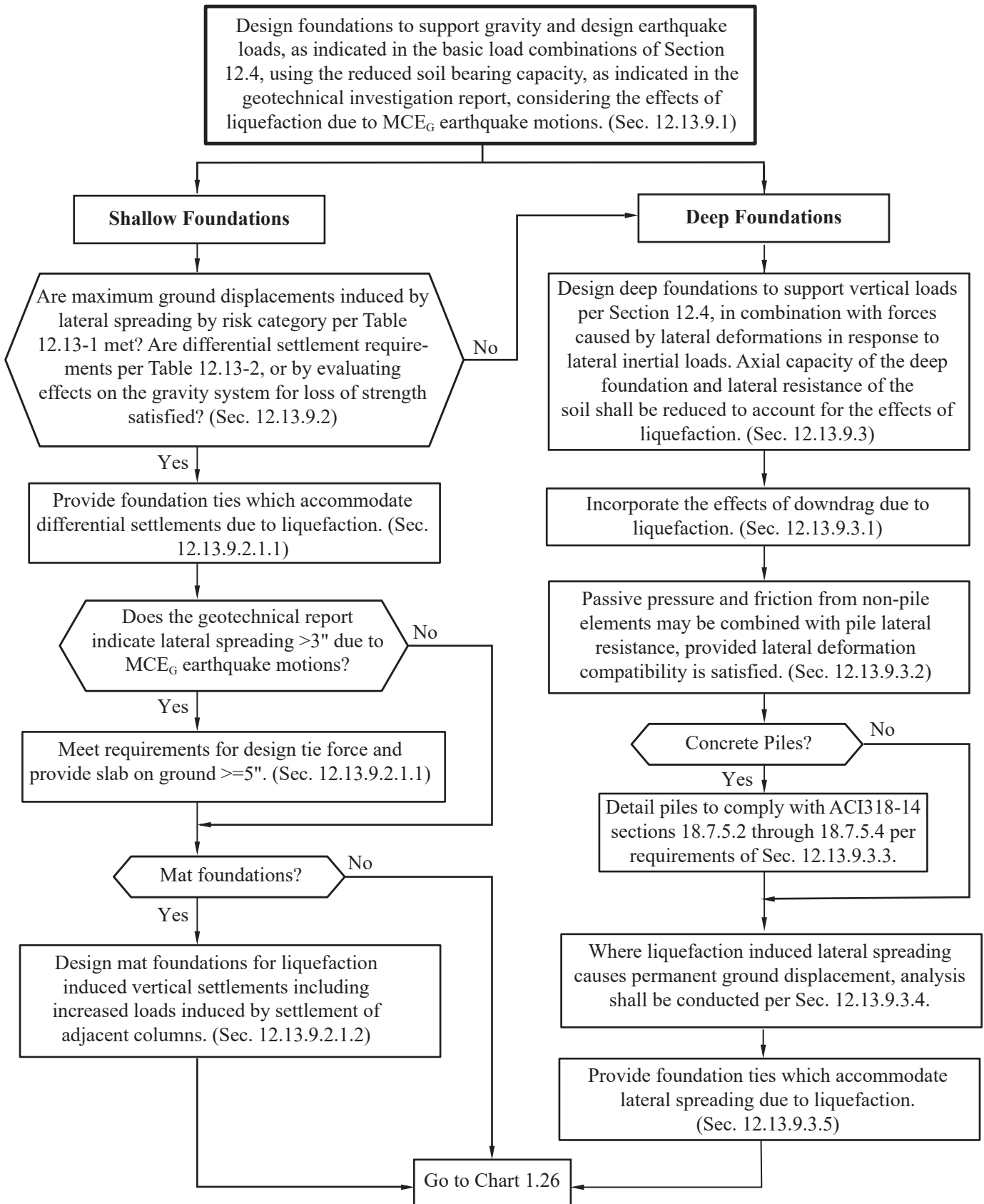


Chart 1.24
Foundations



**Chart 1.25
Liquifiable Soils**



**Chart 1.26
Nonstructural Components**

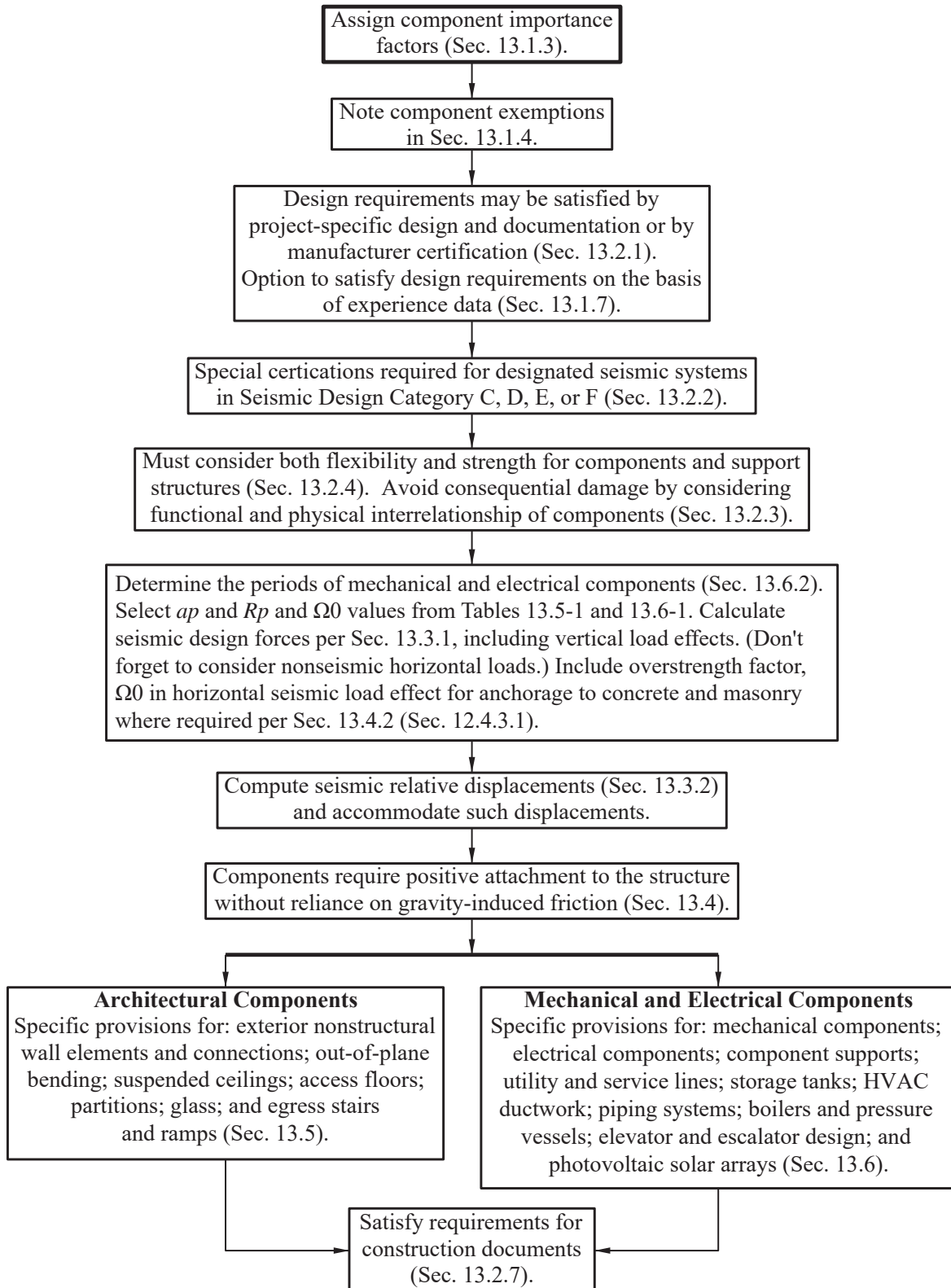
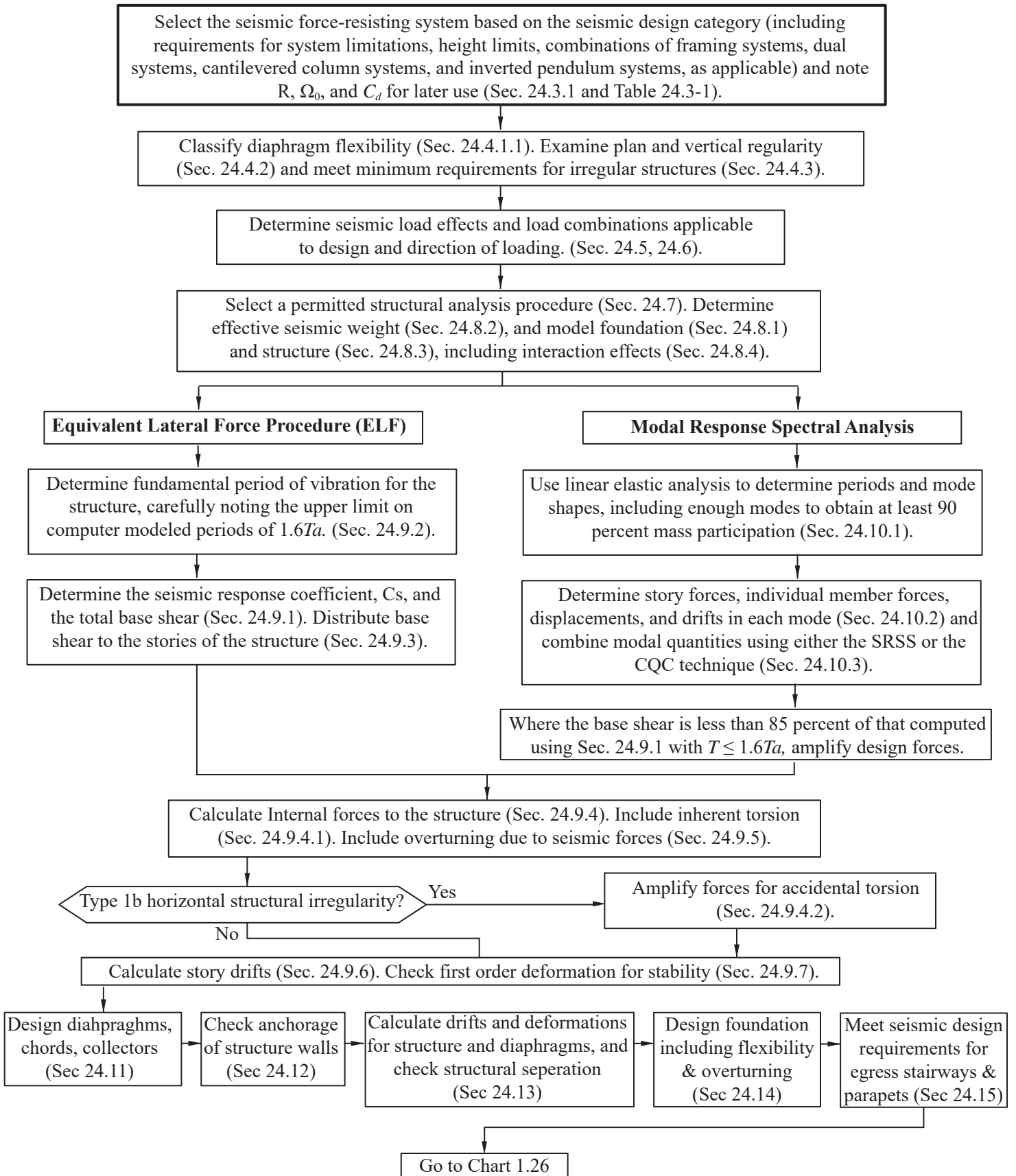


Chart 1.27
SDC B (NEHRP Provisions Only)





FEMA

FEMA P-1051 FLOW
Catalog No. 15275-2