



Disaster Relief Fund: Monthly Report

Through November 30, 2013

December 5, 2013

Fiscal Year 2014 Report to Congress



Homeland
Security

Federal Emergency Management Agency

Foreword from the Administrator

December 5, 2013

I am pleased to present the following “Disaster Relief Fund: Monthly Report,” which has been prepared by the Federal Emergency Management Agency (FEMA).

In response to language set forth in the *Fiscal Year (FY) 2014 Continuing Appropriations Act* (P.L. 113-46), which continues the terms and reporting requirements of the *FY 2013 DHS Appropriations Act* (P.L. 113-6), the report provides details on funding activities for the Disaster Relief Fund (DRF) through November 30, 2013.

Pursuant to congressional requirements, this report is being provided to the following Members of Congress:

The Honorable John R. Carter
Chairman, House Appropriations Subcommittee on Homeland Security

The Honorable David E. Price
Ranking Member, House Appropriations Subcommittee on Homeland Security

The Honorable Mary L. Landrieu
Chairman, Senate Appropriations Subcommittee on Homeland Security

The Honorable Daniel Coats
Ranking Member, Senate Appropriations Subcommittee on Homeland Security

Inquiries relating to this report may be directed to me at (202) 646-3900 or to the Department’s acting Chief Financial Officer, Chip Fulghum, at (202) 447-0441.

Sincerely,



W. Craig Fugate
Administrator
Federal Emergency Management Agency





Disaster Relief Fund: Monthly Report through November 30, 2013

Table of Contents

I. Legislative Language	2
II. Background	3
Appendix A: DRF Appropriations Summary	4
Appendix B: DRF Funding Activity	5
Appendix C: Hurricane Sandy FY 2013 Estimates	11
Appendix D: Allocations, Obligations, & Expenditures	12
Appendix E: Estimate of Fund Exhaustion Date	16

I. Legislative Language

This document has been compiled pursuant to language set forth in the *FY 2014 Continuing Appropriations Act* (P.L. 113-46), which continues the terms and reporting requirements of the *FY 2013 DHS Appropriations Act* (P.L. 113-6). The language in P.L. 113-6 states:

Provided further, That the Administrator of the Federal Emergency Management Agency shall submit to the Committees on Appropriations of the Senate and the House of Representatives the following reports, including a specific description of the methodology and the source data used in developing such reports ...

(2) an estimate or actual amounts, if available, of the following for the current fiscal year shall be submitted not later than the fifth day of each month:

(A) a summary of the amount of appropriations made available by source, the transfers executed, the previously allocated funds recovered, and the commitments, allocations, and obligations made;

(B) a table of disaster relief activity delineated by month, including—

(i) the beginning and ending balances;

(ii) the total obligations to include amounts obligated for fire assistance, emergencies, surge, and disaster support activities;

(iii) the obligations for catastrophic events delineated by event and by State; and

(iv) the amount of previously obligated funds that are recovered;

(C) a summary of allocations, obligations, and expenditures for catastrophic events delineated by event; and

(D) the date on which funds appropriated will be exhausted.

This report covers activities through November 30, 2013.

II. Background

P.L. 113-46, which continues the terms and reporting requirements of P.L. 113-6, requires that the FEMA Administrator provide a report by the 5th day of each month on the DRF, which includes a funding summary, a table delineating the DRF funding activities each month by state and event, a summary of the funding for the catastrophic events, and an estimate of the date on which the funds will be exhausted.

Consequently, the following report elements are included herein:

1. Appendix A is an appropriations summary that includes a synopsis of the amount of appropriations made available by source, the transfers executed, the previously allocated funds recovered, and the commitments, allocations, and obligations.
2. Details on the DRF funding activities delineated by month are presented in Appendix B.
3. Hurricane Sandy FY 2013 estimates by spending categories per P.L. 113-2 are presented in Appendix C.
4. Funding summaries for the current active catastrophic events including the allocations, obligations, and expenditures are contained in Appendix D.
5. An estimate of the fund exhaustion date, or end of fiscal year balance, is provided in Appendix E.

APPENDIX A: DRF Appropriations Summary

Department of Homeland Security - Federal Emergency Management Agency

Disaster Relief Fund Congressional Monthly Report

FY 2014 Activity

Through 11/30/13

Dollars in Millions

Status of Obligations:	<u>Major Declarations</u>	<u>Base</u>	<u>Total</u>	<u>Change Since Last Report</u>
FY 2014 APPROPRIATION /CR (1)	6,076	577	6,653	0
FY 2013 Emergency Funding	0	0	0	0
FY 2014 Supplemental	0	0	0	0
Prior Years Deobligations (Recoveries)	103	83	186	72
Prior Years Carryover	6,682	1,810	8,492	0
Transfers (2)	<u>0</u>	<u>-24</u>	<u>-24</u>	<u>0</u>
FY 2014 APPROPRIATION AVAILABLE (3)	<u>12,861</u>	<u>2,445</u>	<u>15,307</u>	<u>72</u>
Less: TOTAL OBLIGATIONS	<u>802</u>	<u>24</u>	<u>827</u>	<u>519</u>
UNOBLIGATED BALANCE:	<u>12,059</u>	<u>2,421</u>	<u>14,480</u>	<u>-447</u>
Status of Commitments:				
Less: TOTAL COMMITMENTS	<u>816</u>	<u>36</u>	<u>852</u>	<u>529</u>
UNCOMMITTED BALANCE:	<u>12,045</u>	<u>2,409</u>	<u>14,455</u>	<u>-457</u>
Status of Allocations:				
TOTAL ALLOCATION	817	154	971	534
Less: TOTAL OBLIGATIONS	<u>802</u>	<u>24</u>	<u>827</u>	<u>519</u>
UNOBLIGATED ALLOCATION:	<u>15</u>	<u>130</u>	<u>144</u>	<u>15</u>
Amount Undistributed/Unallocated	<u>12,044</u>	<u>2,291</u>	<u>14,336</u>	<u>-461</u>

NOTES:

(1) Pursuant to Sec. 110 of P.L. 113-46, OMB apportioned funding at a rate of operations equal to 29.32%, which has been made available for use thru 1-15-2014 (\$1,944M)

(2) Transfer to DHS OIG

(3) Transfer authority into the Base is capped at 10% of Base Appropriation (currently estimated at \$244 M)

Source of financial information is the Integrated Financial Management Information System (IFMIS)

APPENDIX B: DRF FUNDING ACTIVITY

Disaster Relief Fund Estimated Monthly Obligations FY2014
Appropriation Funding, Catastrophic and Non-Catastrophic Spending, and Recoveries
 (\$ in millions)
 Through 11/30/13

	<u>Oct-13</u>	<u>Nov-13</u>	<u>Dec-13</u>	<u>Jan-14</u>	<u>Feb-14</u>	<u>Mar-14</u>	<u>Apr-14</u>	<u>May-14</u>	<u>Jun-14</u>	<u>Jul-14</u>	<u>Aug-14</u>	<u>Sep-14</u>	<u>Total</u>
Beginning of Month DRF Balance	\$8,492	\$14,927	\$14,480	\$14,480	\$14,480	\$14,480	\$14,480	\$14,480	\$14,480	\$14,480	\$14,480	\$14,480	
FY 2014 Continuing Resolution ⁽¹⁾	\$6,653												
OIG Transfer	(24)												
Emergencies	\$ (0.2)	\$ (0.1)	\$ -	\$ -	\$ -	\$ -	\$ -	\$ -	\$ -	\$ -	\$ -	\$ -	\$ (0.2)
Fire Management	\$ (0.1)	\$ (1.0)	\$ -	\$ -	\$ -	\$ -	\$ -	\$ -	\$ -	\$ -	\$ -	\$ -	\$ (1.0)
Surge	\$ (0.4)	\$ (1.0)	\$ -	\$ -	\$ -	\$ -	\$ -	\$ -	\$ -	\$ -	\$ -	\$ -	\$ (1.4)
Disaster Support Activities	\$ (1.0)	\$ (20.8)	\$ -	\$ -	\$ -	\$ -	\$ -	\$ -	\$ -	\$ -	\$ -	\$ -	\$ (21.8)
Total Base Funding	\$ (1.7)	\$ (22.8)	\$ -	\$ -	\$ -	\$ -	\$ -	\$ -	\$ -	\$ -	\$ -	\$ -	\$ (24.4)
Non Catastrophic DR Obligations	\$ (130.0)	\$ (164.0)	\$ -	\$ -	\$ -	\$ -	\$ -	\$ -	\$ -	\$ -	\$ -	\$ -	\$ (294.0)
Catastrophic DR Obligations	\$ (176.0)	\$ (332.0)	\$ -	\$ -	\$ -	\$ -	\$ -	\$ -	\$ -	\$ -	\$ -	\$ -	\$ (508.0)
Total Disaster (DR) Funding	\$ (306.0)	\$ (496.0)	\$ -	\$ -	\$ -	\$ -	\$ -	\$ -	\$ -	\$ -	\$ -	\$ -	\$ (802.0)
Total DRF Obligations	\$ (307.7)	\$ (518.8)	\$ -	\$ -	\$ -	\$ -	\$ -	\$ -	\$ -	\$ -	\$ -	\$ -	\$ (826.5)
Recoveries of Previous Years De-Obligations	\$ 114	\$ 72	\$ -	\$ -	\$ -	\$ -	\$ -	\$ -	\$ -	\$ -	\$ -	\$ -	\$ 186
End of Month Balance (Including Recoveries)	\$ 14,927	\$ 14,480	\$14,480	\$14,480	\$14,480	\$14,480	\$14,480	\$14,480	\$14,480	\$14,480	\$14,480	\$14,480	

⁽¹⁾ FY 2014 Continuing Resolution (less OIG transfer)

APPENDIX B: DRF Funding Activity

Disaster Relief Fund Estimated Monthly Obligations FY2014
DRF Monthly Spend Plan (FY 2014)
 (\$ in millions)
 Through 11/30/13

	Oct-13	Nov-13	Dec-13	Jan-14	Feb-14	Mar-14	Apr-14	May-14	Jun-14	Jul-14	Aug-14	Sep-14	Total
Beginning of Month DRF Balance (1)	\$8,492	\$14,927	\$14,480	\$13,807	\$12,870	\$11,823	\$10,542	\$9,738	\$9,073	\$8,426	\$7,796	\$7,332	
FY 2014 Continuing Resolution (2)	\$6,653												
DHS OIG Transfer	(\$24)												
Total Available Beginning of Month	\$15,121	\$14,927	\$14,480	\$13,807	\$12,870	\$11,823	\$10,542	\$9,738	\$9,073	\$8,426	\$7,796	\$7,332	
Major Declarations Base	\$12,758	\$12,529	\$12,059	\$11,467	\$10,611	\$9,645	\$8,446	\$7,723	\$7,139	\$6,573	\$6,025	\$5,642	
	\$2,363	\$2,398	\$2,421	\$2,340	\$2,259	\$2,177	\$2,096	\$2,015	\$1,934	\$1,853	\$1,772	\$1,691	
DRF Base Activities (3)													
Emergencies													
Monthly Actual/Estimated Obligations	(\$0.2)	(\$0.1)	(\$28)	(\$28)	(\$28)	(\$28)	(\$28)	(\$28)	(\$28)	(\$28)	(\$28)	(\$28)	(\$276)
Fire Management													
Monthly Actual/Estimated Obligations	(\$0.1)	(\$1.0)	(\$9)	(\$9)	(\$9)	(\$9)	(\$9)	(\$9)	(\$9)	(\$9)	(\$9)	(\$9)	(\$88)
Surge													
Monthly Actual/Estimated Obligations	(\$0.4)	(\$1.0)	(\$10)	(\$10)	(\$10)	(\$10)	(\$10)	(\$10)	(\$10)	(\$10)	(\$10)	(\$10)	(\$99)
Disaster Support & Other Activities													
Monthly Actual/Estimated Obligations	(\$1.0)	(\$20.8)	(\$35)	(\$35)	(\$35)	(\$35)	(\$35)	(\$35)	(\$35)	(\$35)	(\$35)	(\$35)	(\$372)
Estimated/Actual Base Obligations	(\$1.7)	(\$22.8)	(\$81)	(\$81)	(\$81)	(\$81)	(\$81)	(\$81)	(\$81)	(\$81)	(\$81)	(\$81)	(\$836)
DRF DR Activities													
Average Monthly Major DR Activity (Non-Cat.)	(\$130)	(\$164)	(\$260)	(\$260)	(\$260)	(\$260)	(\$260)	(\$260)	(\$260)	(\$260)	(\$260)	(\$260)	(\$2,894)
Gustav													
Initial FY 14 Spend Plan	(\$0)	(\$1)	(\$0)	(\$3)	(\$0)	(\$4)	(\$3)	(\$3)	(\$0)	(\$4)	(\$2)	(\$3)	(\$24)
Monthly Actual/Estimated Obligations	(\$0.4)	(\$2)	(\$0)	(\$1)	(\$1)	(\$4)	(\$3)	(\$3)	(\$2)	(\$4)	(\$2)	(\$3)	(\$26)
Ike													
Initial FY 14 Spend Plan	(\$0)	(\$2)	(\$11)	(\$71)	(\$25)	(\$8)	(\$2)	(\$8)	(\$10)	(\$40)	(\$6)	(\$3)	(\$187)
Monthly Actual/Estimated Obligations	(\$0.4)	(\$3)	(\$34)	(\$5)	(\$37)	(\$34)	(\$23)	(\$29)	(\$10)	(\$36)	(\$6)	(\$3)	(\$220)
Katrina Rita Wilma													
Initial FY 14 Spend Plan	(\$22)	(\$119)	(\$134)	(\$103)	(\$91)	(\$70)	(\$83)	(\$42)	(\$79)	(\$61)	(\$49)	(\$156)	(\$1,009)
Monthly Actual/Estimated Obligations	(\$21.8)	(\$115)	(\$75)	(\$78)	(\$105)	(\$83)	(\$68)	(\$83)	(\$67)	(\$74)	(\$58)	(\$136)	(\$965)
Midwest Floods													
Initial FY 14 Spend Plan	(\$4)	(\$11)	(\$6)	(\$2)	(\$1)	(\$0)	(\$0)	(\$1)	(\$1)	(\$0)	(\$0)	(\$3)	(\$29)
Monthly Actual/Estimated Obligations	(\$3.6)	(\$4)	(\$6)	(\$6)	(\$1)	(\$0)	(\$0)	(\$1)	(\$1)	(\$0)	(\$0)	(\$3)	(\$27)
TN Floods													
Initial FY 14 Spend Plan	(\$1)	(\$1)	(\$1)	\$0	\$0	\$0	\$0	\$0	\$0	\$0	\$0	\$0	(\$3)
Monthly Actual/Estimated Obligations	(\$1.1)	(\$1)	(\$1)	\$0	(\$0)	\$0	\$0	\$0	\$0	\$0	\$0	\$0	(\$3)
2011 Spring Tornadoes													
Initial FY 14 Spend Plan	(\$4)	(\$10)	(\$14)	(\$11)	(\$7)	(\$3)	(\$27)	(\$4)	(\$3)	(\$5)	(\$0)	(\$9)	(\$97)
Monthly Actual/Estimated Obligations	(\$4.4)	(\$10)	(\$7)	(\$13)	(\$10)	(\$3)	(\$27)	(\$4)	(\$3)	(\$5)	(\$0)	(\$9)	(\$95)
2011 Spring Floods													
Initial FY 14 Spend Plan	(\$4)	(\$8)	(\$1)	(\$1)	(\$2)	(\$0)	(\$2)	(\$0)	(\$2)	(\$35)	(\$0)	(\$6)	(\$61)
Monthly Actual/Estimated Obligations	(\$3.6)	(\$2)	(\$4)	(\$2)	(\$0)	(\$0)	(\$2)	(\$0)	(\$2)	(\$35)	(\$1)	(\$6)	(\$59)

APPENDIX B: DRF Funding Activity

Disaster Relief Fund Estimated Monthly Obligations FY2014
DRF Monthly Spend Plan (FY 2014)
 (\$ in millions)
 Through 11/30/13

	Oct-13	Nov-13	Dec-13	Jan-14	Feb-14	Mar-14	Apr-14	May-14	Jun-14	Jul-14	Aug-14	Sep-14	Total
Irene													
Initial FY 14 Spend Plan	(\$9)	(\$8)	(\$11)	(\$27)	(\$2)	(\$21)	(\$12)	(\$1)	(\$10)	(\$1)	(\$8)	(\$47)	(\$158)
Monthly Actual/Estimated Obligations	(\$9.4)	(\$9)	(\$4)	(\$27)	(\$4)	(\$40)	(\$9)	(\$2)	(\$26)	(\$1)	(\$24)	(\$15)	(\$172)
Lee													
Initial FY 14 Spend Plan	(\$26)	(\$23)	(\$10)	(\$7)	(\$1)	(\$46)	(\$7)	(\$0)	(\$8)	(\$1)	(\$7)	\$15	(\$122)
Monthly Actual/Estimated Obligations	(\$26.0)	(\$5)	(\$4)	(\$4)	(\$2)	(\$48)	(\$8)	(\$0)	(\$9)	(\$1)	(\$7)	(\$9)	(\$122)
Isaac													
Initial FY 14 Spend Plan	(\$4)	(\$12)	(\$24)	(\$31)	(\$5)	(\$21)	(\$1)	(\$0)	(\$20)	(\$2)	\$0	(\$15)	(\$135)
Monthly Actual/Estimated Obligations	(\$4.3)	(\$4)	(\$2)	(\$49)	(\$15)	(\$30)	(\$1)	(\$0)	(\$13)	(\$2)	\$0	(\$15)	(\$134)
Sandy													
Initial FY 14 Spend Plan	(\$101)	(\$236)	(\$312)	(\$383)	(\$477)	(\$744)	(\$378)	(\$322)	(\$237)	(\$199)	(\$90)	(\$179)	(\$3,657)
Monthly Actual/Estimated Obligations	(\$100.9)	(\$176)	(\$262)	(\$479)	(\$598)	(\$763)	(\$388)	(\$269)	(\$240)	(\$196)	(\$91)	(\$180)	(\$3,743)
Total DR Obligations	(\$306)	(\$496)	(\$659)	(\$923)	(\$1,033)	(\$1,266)	(\$790)	(\$651)	(\$633)	(\$615)	(\$450)	(\$639)	(\$8,460)
<hr/>													
Estimated Monthly Recoveries	\$114	\$72	\$67	\$67	\$67	\$67	\$67	\$67	\$67	\$67	\$67	\$67	\$856
Major declarations	\$12	\$10	\$0	\$0	\$0	\$0	\$0	\$0	\$0	\$0	\$0	\$0	\$22
Sandy Supplemental	\$65	\$16	\$0	\$0	\$0	\$0	\$0	\$0	\$0	\$0	\$0	\$0	\$81
Base	\$36	\$46	\$0	\$0	\$0	\$0	\$0	\$0	\$0	\$0	\$0	\$0	\$83
Minimum Threshold for No-Notice Event												(\$1,000)	
Estimated DRF Available at End of Month (Including Recoveries)	\$14,927	\$14,480	\$13,807	\$12,870	\$11,823	\$10,542	\$9,738	\$9,073	\$8,426	\$7,796	\$7,332	\$5,680	
Actual recoveries cumulative to date	\$114	\$186	\$186	\$186	\$186	\$186	\$186	\$186	\$186	\$186	\$186	\$186	

Actual
Estimate

- (1) FEMA plans to reassess all spend plans and projected spending at least quarterly and will update estimates and obligations based on new data. As we continue to work with the State of NY Sandy estimates are likely to be adjusted upward
- (2) Pursuant to Sec. 110 of P.L. 113-46, OMB apportioned funding at a rate of operations equal to 29.32%, which has been made available for use thru 1-15-2014 (\$1,944M)
- (3) Month-to-month projections for Base activities (excluding DRS) are based on historical averages

APPENDIX B: DRF Funding Activity

Disaster Relief Fund Estimated Monthly Detailed Obligations FY 2014

(\$ in millions)

	Obligations Thru FY13	October	November	December	January	February	March	April	May	June	July	August	September	FY 14 Total
		Actual	Actual	Estimate	Estimate	Estimate	Estimate	Estimate	Estimate	Estimate	Estimate	Estimate	Estimate	
Gustav														
1786-LA	1,544	0	2	0	1	1	4	3	3	2	4	2	3	26
1789-AL	19	-	-	-	-	-	-	-	-	-	-	-	-	-
1793-AR	6	-	-	-	-	-	-	-	-	-	-	-	-	-
1794-MS	47	-	0	-	-	-	-	-	-	-	-	-	-	0
1806-FL	8	-	-	-	-	-	-	-	-	-	-	-	-	-
Emergencies	67	-	-	-	-	-	-	-	-	-	-	-	-	-
	1,690	0	2	0	1	1	4	3	3	2	4	2	3	26
Ike														
1791-TX	4,178	0	2	33	2	34	33	22	27	7	34	3	0	198
1792-LA	329	0	0	1	2	3	2	2	2	3	2	3	2	22
1797-AL	15	-	-	-	-	-	-	-	-	-	-	-	-	-
1802-KY	24	-	-	-	-	-	-	-	-	-	-	-	-	-
1804-AR	3	-	-	-	-	-	-	-	-	-	-	-	-	-
1805-OH	58	-	0	-	-	-	-	-	-	-	-	-	-	0
Emergencies	45	-	-	-	-	-	-	-	-	-	-	-	-	-
	4,651	0	3	34	5	37	34	23	29	10	36	6	3	220
Katrina Rita Wilma														
1602-FL	233	0	0	0	(0)	1	0	0	0	0	0	0	0	2
1603-LA	29,119	20	107	71	62	88	62	57	66	43	65	39	123	805
1604-MS	10,058	1	6	3	18	6	6	2	7	12	2	11	2	76
1605-AL	1,022	-	0	-	-	-	-	-	-	-	-	-	-	0
1606-TX	1,900	0	1	-	-	-	-	-	-	-	-	-	-	1
1607-LA	1,897	1	1	1	3	8	9	9	9	11	7	7	11	75
1609-FL	2,551	0	0	(0)	(5)	2	6	0	0	0	0	0	0	6
Emergencies	805	-	-	-	-	-	-	-	-	-	-	-	-	-
	47,586	22	115	75	78	105	83	68	83	67	74	58	136	965
Midwest Floods														
1760-MO	3	-	-	-	-	-	-	-	-	-	-	-	-	-
1763-IA	1,880	1	5	6	6	1	0	0	1	1	0	0	3	25
1765-NE	2	-	-	-	-	-	-	-	-	-	-	-	-	-
1766-IN	233	-	0	-	-	-	-	-	-	-	-	-	-	0
1768-WI	163	0	0	-	-	-	-	-	-	-	-	-	-	0
1770-NE	46	-	-	-	-	-	-	-	-	-	-	-	-	-
1771-IL	97	3	(1)	-	-	-	-	-	-	-	-	-	-	2
1772-MN	9	-	-	-	-	-	-	-	-	-	-	-	-	-
1773-MO	56	-	-	-	-	-	-	-	-	-	-	-	-	-
1774-SD	8	-	-	-	-	-	-	-	-	-	-	-	-	-
1775-OK	11	-	-	-	-	-	-	-	-	-	-	-	-	-
1776-KS	64	-	-	-	-	-	-	-	-	-	-	-	-	-
1777-MI	19	-	0	-	-	-	-	-	-	-	-	-	-	0
	2,590	4	4	6	6	1	0	0	1	1	0	0	3	27

Estimates based on Nov. 2013 FEMA Spend Plans
Totals that have minor discrepancies are due to rounding

APPENDIX B: DRF Funding Activity

Disaster Relief Fund Estimated Monthly Detailed Obligations FY 2014

(\$ in millions)

	Obligations Thru FY13	October	November	December	January	February	March	April	May	June	July	August	September	FY 14 Total
TN Floods														
1909-TN	506	1	1	1	-	0	-	-	-	-	-	-	-	3
	506	1	1	1	-	0	-	-	-	-	-	-	-	3
2011 Spring Tornadoes														
1971-AL	678	0	0	1	0	1	1	-	-	-	-	-	-	4
1972-MS	65	0	0	0	1	-	1	-	-	-	-	-	-	2
1973-GA	41	0	0	0	0	-	-	-	-	-	-	-	-	0
1974-TN	87	-	0	0	-	-	-	-	-	-	-	-	-	0
1975-AR	93	0	0	0	0	3	-	-	-	-	-	-	-	3
1976-KY	53	0	0	-	5	-	-	-	-	-	-	-	-	5
1980-MO	436	4	9	5	7	6	1	27	4	3	5	0	9	80
Emergencies	1	-	-	-	-	-	-	-	-	-	-	-	-	-
	1,455	4	10	7	13	10	3	27	4	3	5	0	9	95
2011 Spring Flood														
1981-ND	595	4	2	-	-	-	-	-	-	-	-	-	-	5
1982-MN	27	-	0	4	2	0	0	2	0	2	35	1	6	53
1983-MS	36	-	0	-	-	-	-	-	-	-	-	-	-	0
1984-SD	71	0	0	-	-	-	-	-	-	-	-	-	-	0
Emergencies	40	0	-	-	-	-	-	-	-	-	-	-	-	0
	770	4	2	4	2	0	0	2	0	2	35	1	6	59
Irene														
4017-PR	115	0	0	0	0	1	16	0	0	0	0	0	0	18
4019-NC	173	3	0	1	5	0	-	-	-	-	-	-	-	9
4020-NY	502	0	4	1	14	1	13	9	1	22	0	23	13	102
4021-NJ	395	0	0	0	0	0	1	0	0	3	0	0	0	5
4022-VT	209	2	2	1	0	0	2	0	1	1	0	0	0	10
4023-CT	63	2	0	(0)	0	1	2	-	-	-	-	-	-	6
4024-VA	64	2	0	0	3	0	0	-	-	0	-	0	0	6
4025-PA	83	-	0	0	3	0	0	0	0	0	0	-	2	6
4026-NH	18	0	0	(0)	0	-	2	-	-	-	-	-	-	2
4027-RI	10	0	1	0	-	0	-	-	-	-	-	-	-	1
4028-MA	44	-	0	0	1	1	3	-	-	-	-	-	-	5
4032-ME	2	0	0	0	-	-	-	-	-	-	-	-	-	0
4034-MD	22	0	-	-	-	-	-	-	-	-	-	-	-	0
4036-DC	3	-	-	-	0	0	0	-	-	-	-	-	-	0
4037-DE	3	-	-	-	-	-	-	-	-	-	-	-	-	-
Emergencies	63	-	-	-	-	-	-	-	-	-	-	-	-	-
	1,768	9	9	4	27	4	40	9	2	26	1	24	15	172

Estimates based on Nov. 2013 FEMA Spend Plans
Totals that have minor discrepancies are due to rounding

APPENDIX B: DRF Funding Activity

Disaster Relief Fund Estimated Monthly Detailed Obligations FY 2014

(\$ in millions)

	Obligations Thru FY13	October	November	December	January	February	March	April	May	June	July	August	September	FY 14 Total
Lee														
4030-PA	321	0	2	1	1	1	2	1	0	1	0	1	2	12
4031-NY	167	26	3	3	2	0	46	7	0	8	0	7	6	108
4038-MD	11	0	-	-	0	-	-	-	-	-	-	-	-	0
4039-NJ	5	-	0	0	0	0	0	0	0	0	0	0	0	0
4041-LA	6	-	0	-	0	1	-	-	-	-	-	-	-	1
4045-VA	7	-	-	-	1	0	-	-	-	-	-	-	-	1
Emergencies	2	-	-	-	-	-	-	-	-	-	-	-	-	-
	519	26	5	4	4	2	48	8	0	9	1	7	9	122
Isaac														
4080-LA	227	4	3	1	33	12	30	0	0	13	0	-	14	110
4081-MS	28	0	0	0	6	1	-	-	-	-	-	-	-	9
4082-AL	0	-	0	0	-	0	-	1	-	0	0	-	-	1
4084-FL	-	0	1	1	10	1	-	0	-	-	2	(0)	0	14
Emergencies	11	-	-	-	0	1	-	-	-	-	-	-	-	1
	266	4	4	2	49	15	30	1	0	13	2	(0)	15	134
Sandy ⁽¹⁾														
4085-NY	-	46	106	226	386	489	400	327	183	152	118	71	167	2,669
4086-NJ	-	53	67	36	82	98	357	57	81	81	76	15	14	1,016
4087-CT	4,318	1	2	0	4	2	3	4	3	4	1	-	-	24
4089-RI	1,903	0	0	-	2	-	0	-	0	-	0	-	-	3
4090-DE	88	0	0	0	1	0	0	0	-	1	-	0	-	2
4091-MD	13	0	0	0	2	0	2	0	-	2	-	2	-	7
4092-VA	6	0	0	-	0	-	1	-	-	0	-	0	-	2
4093-WV	41	1	0	-	0	0	0	-	1	-	1	-	-	3
4095-NH	12	-	0	-	0	-	0	-	-	0	-	-	-	0
4096-DC	20	0	0	-	-	-	0	-	-	0	-	0	-	0
4097-MA	3	1	1	0	2	8	-	-	-	0	-	-	-	12
4098-OH	15	-	0	-	0	1	0	0	0	0	1	1	-	3
4099-PA	14	0	1	0	0	-	0	-	0	1	-	1	0	3
	6,453	101	176	262	479	598	763	388	269	240	196	91	180	3,744
TOTAL ⁽¹⁾	68,353	176	332	399	663	773	1,006	530	391	373	355	190	379	5,568

⁽¹⁾ FEMA plans to reassess all spend plans and projected spending at least quarterly and will update estimates based on new data

APPENDIX C: HURRICANE SANDY FY 2014 ESTIMATES

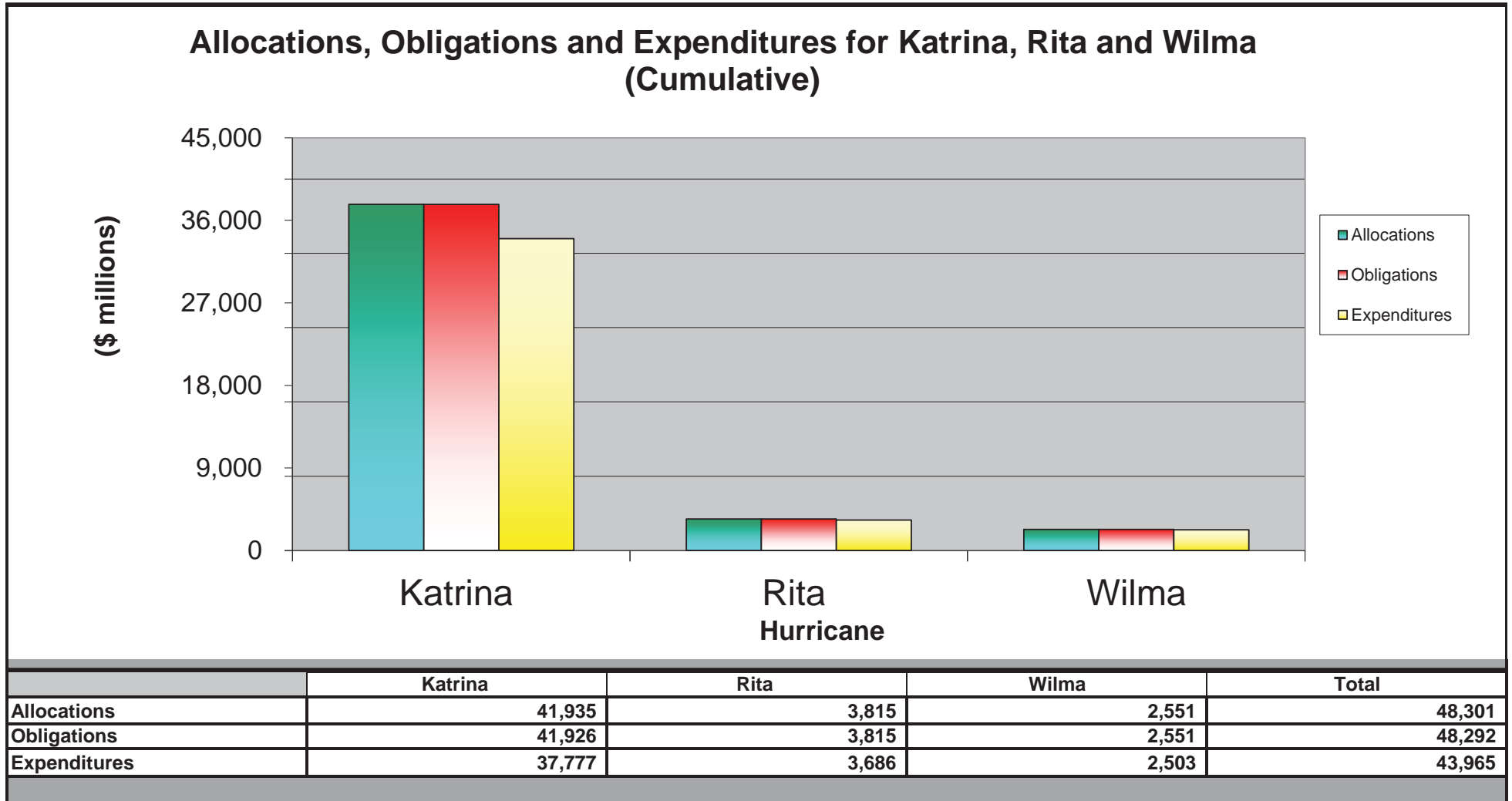
Hurricane Sandy FY 2014 Actuals/Estimates*
as of November 30, 2013
(\$ in Millions)

Category	Actual through September 2013	Actual /Estimated 1st Qtr	Estimated 2nd Qtr	Estimated 3rd Qtr	Estimated 4th Qtr	Fiscal Year 2014 Totals	Estimated Life To Date Totals Thru FY 14
Public Assistance	\$3,402	\$465	\$1,652	\$710	\$298	\$3,125	\$6,527
Individual Assistance	\$1,881	\$16	\$18	\$2	\$0	\$36	\$1,917
Mitigation	\$90	\$11	\$145	\$165	\$150	\$471	\$561
Operations	\$393	\$1	\$0	\$0	\$0	\$1	\$394
Administrative	\$710	\$46	\$25	\$20	\$20	\$111	\$821
Total**	\$6,476	\$539	\$1,840	\$897	\$467	\$3,744	\$10,220

*Additional reporting requirement per P.L. 113-2

APPENDIX D: ALLOCATIONS, OBLIGATIONS AND EXPENDITURES

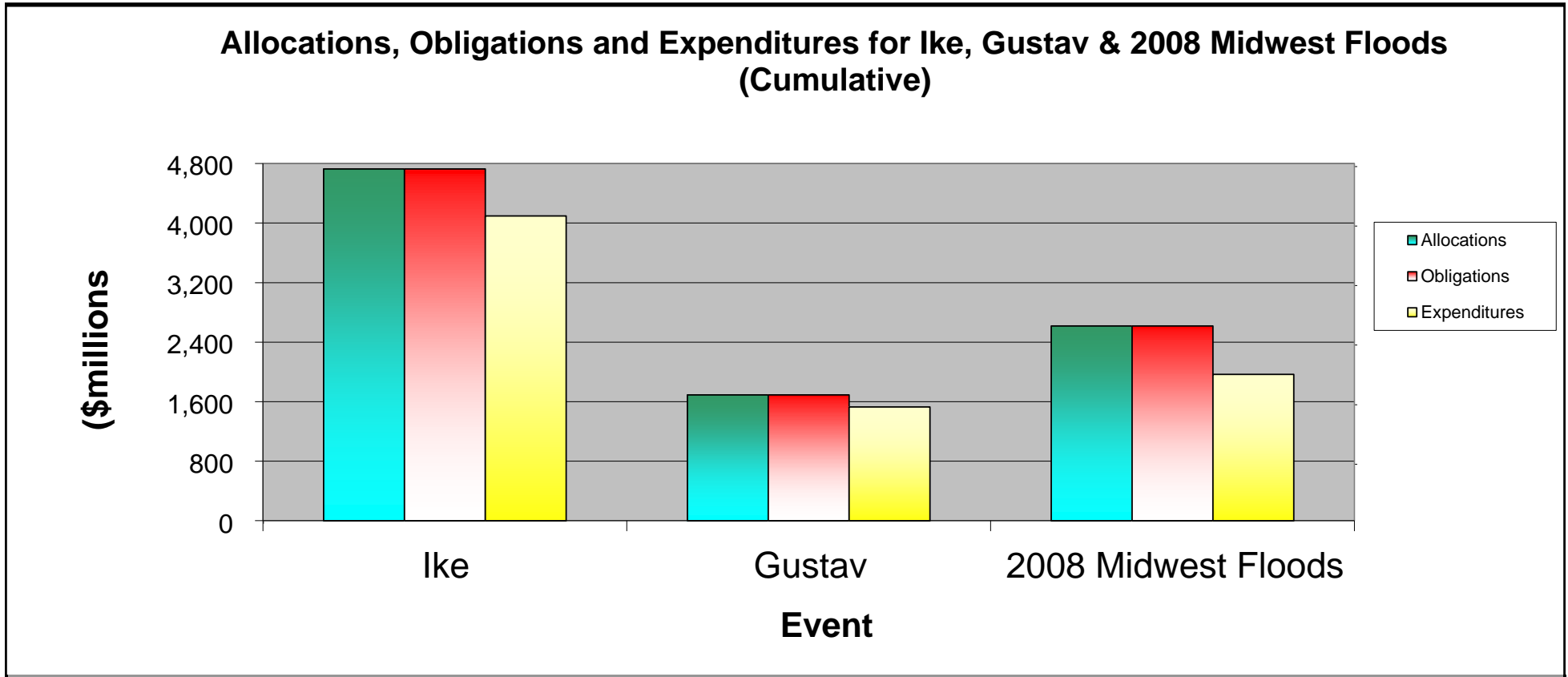
Through 11/30/2013



Source of financial information is the Integrated Financial Information Management System (IFMIS)
 Totals that have minor discrepancies are due to rounding
 Total obligations include prior-year de-obligations

APPENDIX D: ALLOCATIONS, OBLIGATIONS AND EXPENDITURES

Through 11/30/2013



	Ike	Gustav	2008 Midwest Floods	Total
Allocations	4,728	1,692	2,618	9,039
Obligations	4,728	1,692	2,618	9,039
Expenditures	4,097	1,530	1,968	7,595

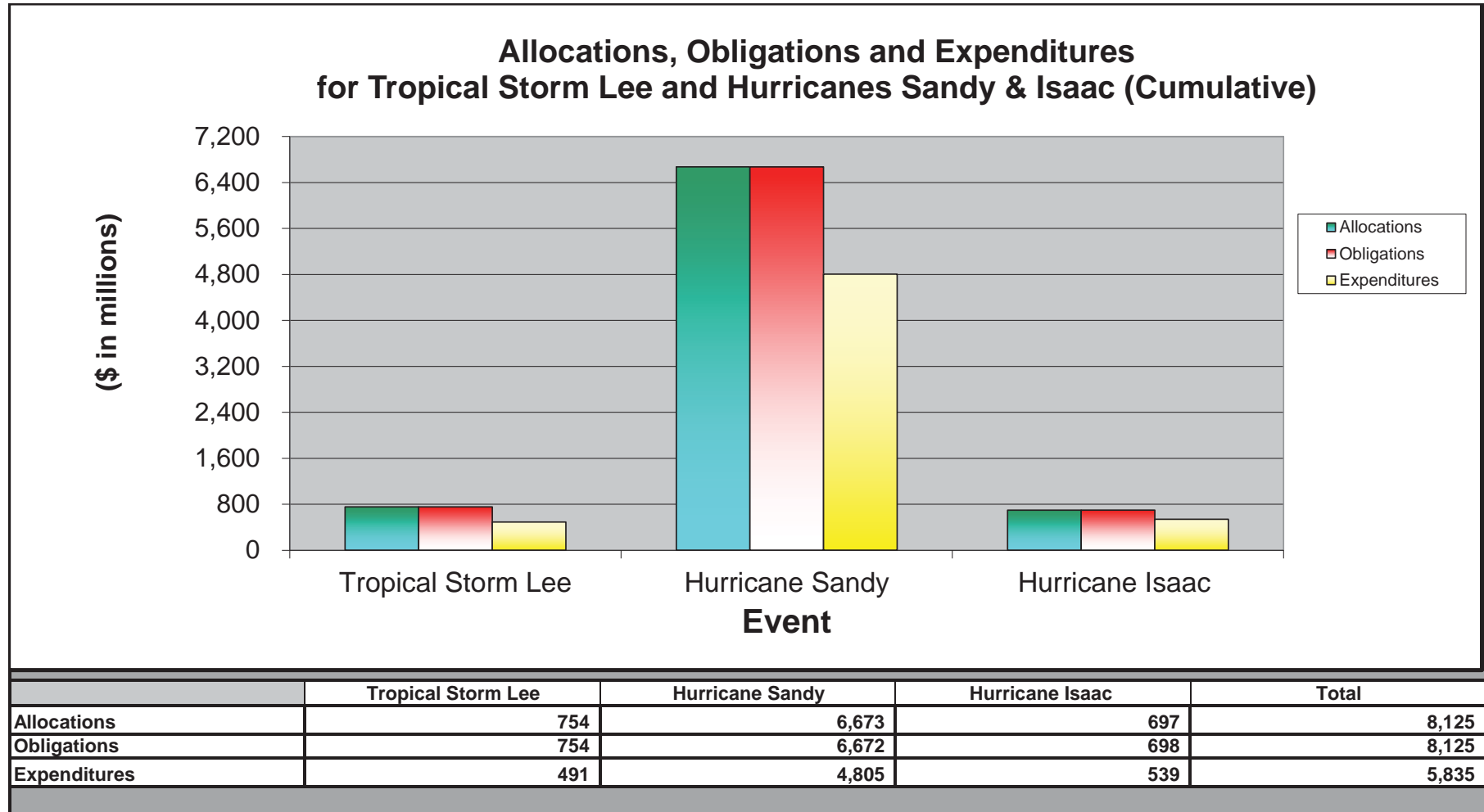
Source of financial information is the Integrated Financial Information Management System (IFMIS)

Totals that have minor discrepancies are due to rounding

Total obligations include prior-year de-obligations

APPENDIX D: ALLOCATIONS, OBLIGATIONS EXPENDITURES

Through 11/30/2013

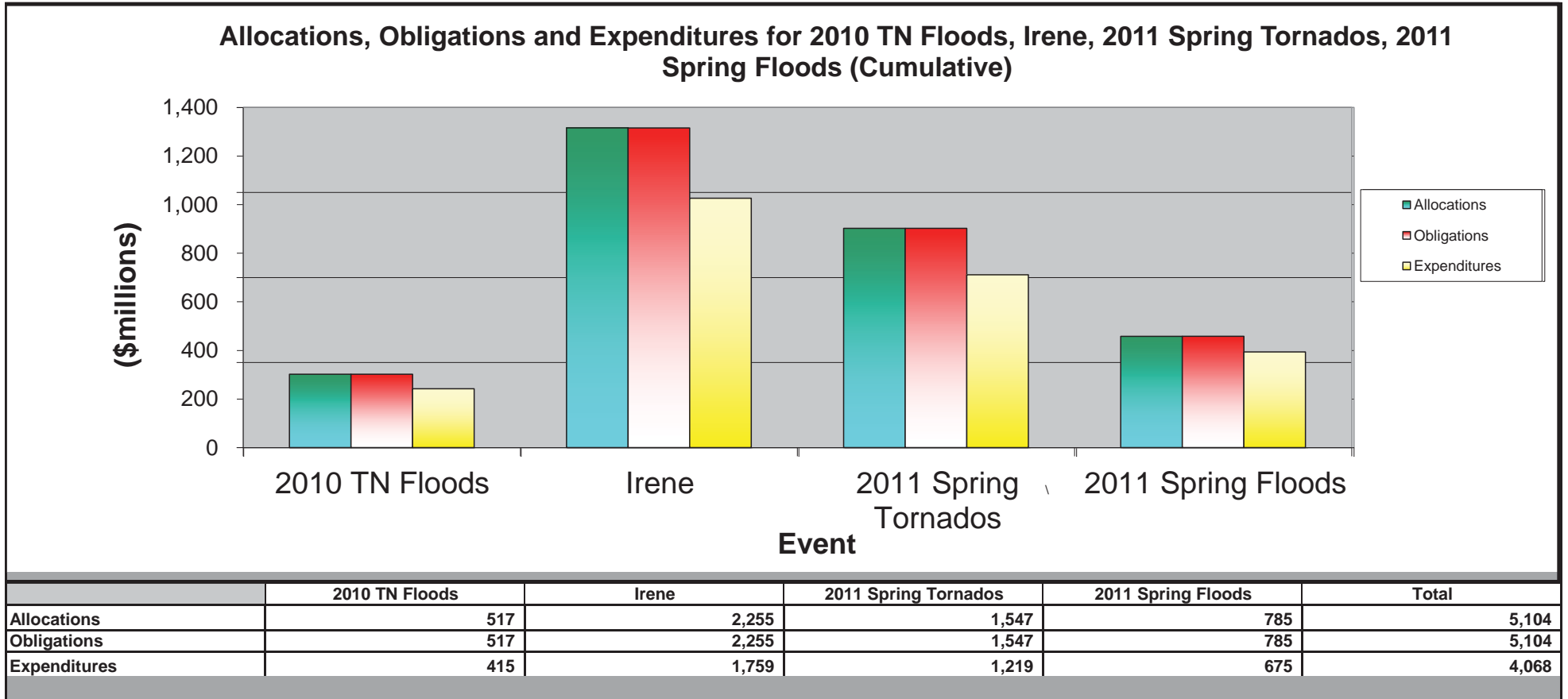


Source of financial information is the Integrated Financial Information Management System (IFMIS)
 Totals that have minor discrepancies are due to rounding
 Includes Sandy Emergencies, not displayed on previous pages.
 Total obligations include prior-year de-obligations

Obligations exceed allocations for some budget object codes due to the timing of posting transactions in the financial system. This is permissible under 31 U.S.C. 1517 and does not constitute an Antideficiency Act violation.

APPENDIX D: ALLOCATIONS, OBLIGATIONS AND EXPENDITURES

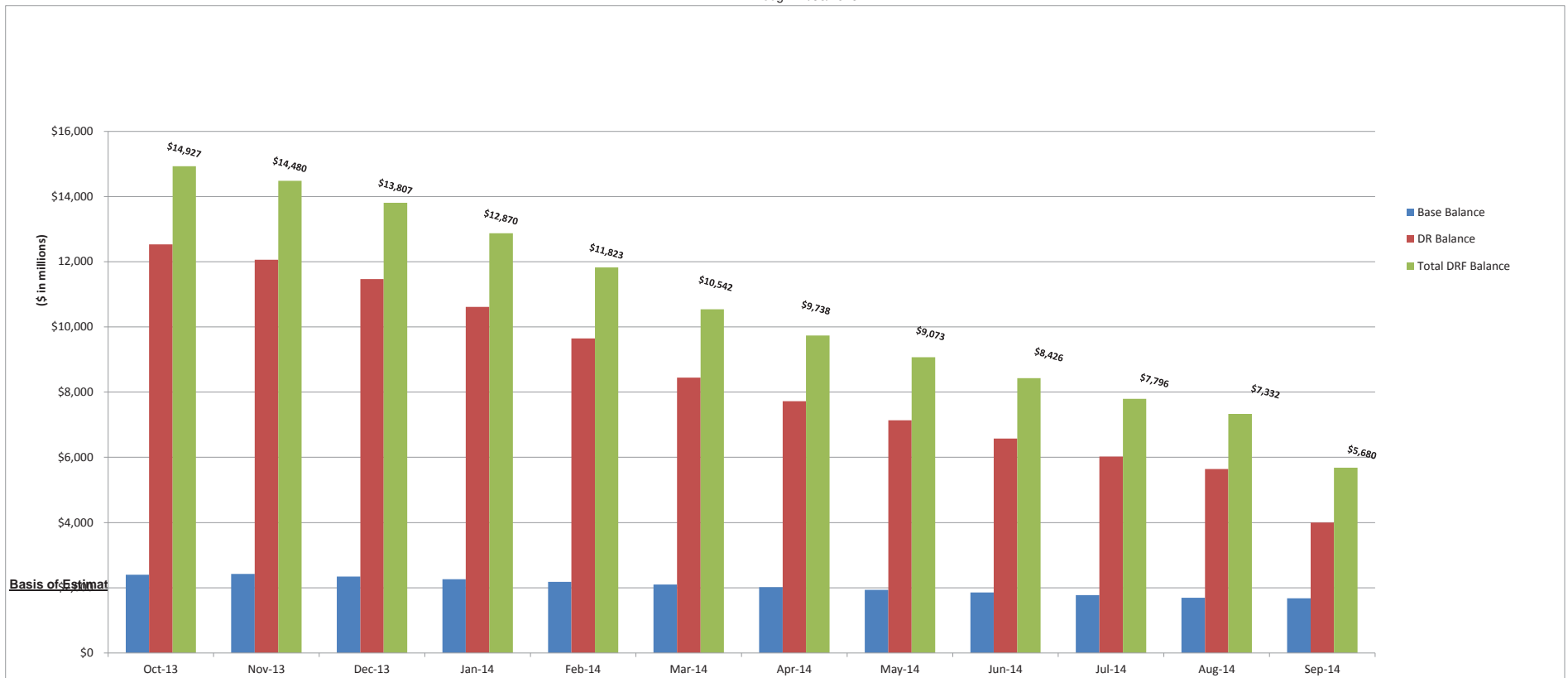
Through 11/30/2013



Source of financial information is the Integrated Financial Information Management System (IFMIS)
 Totals that have minor discrepancies are due to rounding
 Total obligations include prior-year de-obligations

APPENDIX E: Estimate of Fund Exhaustion Date

Through 11/30/2013



1. Includes estimated FY2014 funding for the following major disaster events:
 - Hurricanes Katrina/Rita/Wilma
 - Hurricane Gustav
 - Hurricane Ike
 - Midwest Flooding
 - 2010 TN Flooding
 - 2011 Spring Tornadoes
 - 2011 Spring Floods
 - Hurricane Irene
 - Tropical Storm Lee
 - Hurricane Isaac
 - Hurricane Sandy
2. Average for non-catastrophic event funding based on historical averages (non-Base and Base excluding DRS)
3. FEMA will adjust available recoveries when required to ensure sufficiency of funds under the BCA categories
4. Estimates based on Nov. 2013 FEMA Spend Plans