

JOSHUA APPROACH Frequencies

PALMDALE	124.55
ISABELLA	134.05
OWENS	126.55
SALINE	123.95
PANAMINT	120.25
BACKUP JOSHUA	133.65

Area Control Facility Frequencies

SPORT (R-2515)	132.75
CHINA LAKE (R-2505)	128.25

Intense civilian activities in the Mojave, California City, Tehachapi and Inyokern Airport areas, generally 12,000' MSL and below.

Glider activity along southern Sierras above FL180. Wave Camp (Dec - Apr).

R-2508 Core Hours of Operations

0630 – 2230 (local times) Mon – Fri.
0800 – 1600 (local times) Sat & Sun.

Core hours involve participant operations with Air Traffic Advisories by Joshua Approach within R-2508.

EDWARDS AFB & R-2508



5 Steps to Navigating R-2508

1. **SQUAWK:** Let Joshua see you
2. **TALK:** Tell Joshua intentions
(monitor 121.5 on 2nd radio)
3. **BE VISIBLE:** Turn on all lights
4. **BE PREDICTABLE:** Fly VFR Altitudes &
Use the VFR Flyways when possible
5. **PLAN BEFORE YOU GO:** Check NOTAMs
& review the charts for your route



Issues? Contact Flight Safety

(661) 277-2623

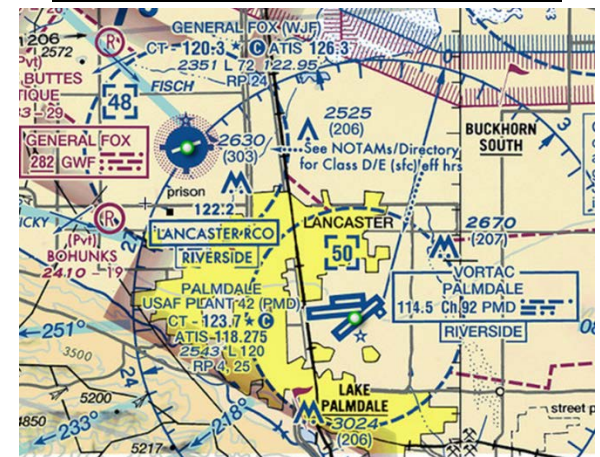
412tw.SEF@us.af.mil

www.edwards.af.mil Click "Flight Safety"

Common Hazards in R-2508

- Experimental Flight Test
- Weapons Release
- Controlled Firing Areas
- Aerial Refueling
- Supersonic Flight
- Low Level Flying
- Test Pilot Training
- Flight Departures (aka Spins)
- Aerial Engagements
- Large Force Exercises
- Rocket Launches
- Aircraft Formations & Tactics
- Unlit Aircraft
- Unmanned Aerial Vehicles

Palmdale AF Plant 42 Operations



HIGH DENSITY TRAINING FOR AIR FORCE ACFT

COMMON TRANSIT ALTITUDE: 5000' MSL

General Aviation Transit Routes

