



**Welcome** *Your guide to an easier PCS move abroad.*  
*Created by Navy Region Singapore Public Affairs* **to Singapore**

# TABLE OF CONTENTS

## Welcome to Singapore – 2

- History and Culture
- Transportation
- Politics
- Climate
- Language
- Food in Singapore Culture
- Economy

## U.S. Military in Singapore – 3

## Preparing for Transfer – 4

- Overseas Screening
- Power of Attorney
- Preparing Financially
- Post Office Box
- Preparing for the Flight
- Passports/Visas
- Medical Requirements
- Household Goods Shipments
- Temporary Lodging

## Personal Property – 5

- Express Shipment
- What Should I Bring to Singapore?
- Particular Items to Bring
- Vehicle Shipments Not Authorized
- What Should I NOT Bring to Singapore?

## Pets – 6

- Types of Pets Allowed
- Importing Pets Into Singapore
- Steps Upon Your Arrival
- Preparation Prior to Arrival

## Driving in Singapore – 7

- Driver's Licenses
- Auto Insurance
- Finding a Vehicle
- Auto Registration and Taxes

## Housing – 8

- Family and Unaccompanied Housing
- Housing Eligibility

## Getting Settled in Singapore – 9

- Sembawang Community Shuttle
- Newcomers' Orientation
- Trains & Taxis
- Credit Cards
- Civilian Clothing and Uniforms
- You and the Law

## Domestic Workers – 10

## Force Protection and Crime – 11

## Educational Opportunities & Schools – 12

- Navy College Office
- University of Maryland University College
- Elementary and High Schools

## Child & Youth Programs – 13

- Part-day Preschool (Ages 3 to 5)
- Recreational School Age Program (Grades K-5)
- Youth Sponsorship
- Summer Day Camp (Completed grades K-6)
- Teen Center (Grades 6-12)

## Services and Quality of Life Programs – 14

- Morale, Welfare and Recreation (MWR)
- Chapel
- Medical Aid Station
- Navy Federal Credit Union
- Singapore Banking Facilities
- Cash Cage
- Navy Exchange
- Post Office
- Hair & Nail Care, Dry Cleaning



# WELCOME TO SINGAPORE

Despite its small land area of less than 700 square kilometers (about 3 times the size of the District of Columbia), Singapore is a modern, thriving city-state of 5 million people. Boasting one of the world's most advanced economies, efficient transportation networks and a tolerant mix of cultures, religions and ethnic backgrounds, Singapore is often referred to as one of the most cosmopolitan locations in the world in which to live and work.

## History and Culture

Although Singapore's history dates from the 11th century, the island was little known to the West until the 19th century, when in 1819, Sir Thomas Stamford Raffles arrived as an agent of the British East India Company. In 1824, the British purchased Singapore Island from the Sultan of Johor and Temenggong, and within a few years Singapore was recognized as a major regional port. In 1867, Singapore was made a British Crown Colony, an arrangement that continued until 1946.

In the 20th century, the automobile industry's demand for rubber from Southeast Asia and the packaging industry's need for tin helped make Singapore one of the world's major ports. In 1921, the British constructed a naval base at Sembawang, which was soon supplemented by an air base. Days after the attack at Pearl Harbor, the Japanese attacked Singapore, capturing the island in February, 1942. It remained under their control until September 1945, when the British returned.

In 1946, Singapore became a separate British Crown Colony, and shortly after Singapore experienced a twelve-year "State of Emergency" when the Malayan Communist Party attempted to seize control of the peninsula. In 1959, Singapore became self-governing, and became an independent nation on August 9, 1965.

Today, Singapore is a diverse melting pot of cultures and religions. Singaporeans of Chinese ancestry make up the majority of the population (76%), with Malay (14%), Indian (8%) and British, other European and North Americans (2%) as minorities. Religious tolerance is stressed in Singapore, with Buddhism the predominant religion (42%), followed by significant Muslim (15%), Taoist (9%), non-denominational Christian (8%), Catholic (5%) and Hindu (4%) populations.

## Transportation

Singapore boasts one of the world's most efficient public transportation networks, comprised of the Mass Rapid Transit (MRT) train network that laces through the island, and is incredibly easy to use. A vast bus system is also readily available along with an abundance of inexpensive taxis.

Reusable "EZ Link" fare cards can be purchased for \$12 SGD, \$5 for the card and \$7 will be loaded onto the card for you to use. EZ Link cards can be used on MRT trains and buses. To ride the trains or bus, just tap your card on the turnstile reader and the fare is automatically deducted. MRT train rides typically cost \$1.50-2.80 SGD each way, while bus fares start at \$.80 SGD. A taxi ride from the airport to Sembawang, which takes approx. 40 minutes, runs around \$35 SGD, depending on traffic.

## Politics

Singapore is a parliamentary republic with an elected president who serves as chief of state, and a prime minister heading the government. Following legislative elections, the leader of the majority party or leader of the majority coalition is usually appointed prime minister by the president; deputy prime ministers are appointed by the president.

The 84 members of Singapore's unicameral (single-house) parliament serve five-year terms; the president serves six-year terms.

## Climate

Situated one degree north of the Equator, Singapore enjoys a tropical climate. The lowest temperature ever recorded at Singapore was 66 degrees Fahrenheit. Year round, Singapore is hot, humid, and rainy. There are two distinct monsoon seasons - Northeastern monsoon (December to March) and Southwestern monsoon (June to September). Between monsoon seasons, afternoon and early evening thunderstorms are commonplace.

## Language

English is the official language of Singapore; all government and most private business is conducted in English. However, many Chinese, Bahasa and Tamil speakers have blended their native tongue with English, to create versions of "Singlish," which is often used in social settings and in the city's smaller shopping districts. In any event, communicating in English usually poses no problems in Singapore.

Singapore's literacy rate is among the highest in the world, with 95% of the population able to read and speak at least one language.

## Food in Singapore Culture

Eating is a favorite pastime in Singapore! Given its diverse cultural background, Singapore offers a wide variety of Asian, European and fusion restaurants to fit all budgets. "Hawker Stalls" are common at either the top floor or basement of most every mall, and in open-air markets, where full meals can be had for as little as \$2 SGD. Alternately, some of Asia's finest dining can be found downtown.

Meal times are similar to those in the United States-lunch is typically between 11:30 a.m. and 1 p.m., with dinner typically from 6 to 8 p.m.

Sanitary standards in Singapore are world-class. Singapore's National Environment Agency conducts periodic inspections of all eateries, and grades (A, B or C) must be clearly posted by law.

## Economy

Singapore has a highly developed and successful free-market economy. It enjoys a remarkably open and corruption-free environment, stable prices, and its per capita GDP of \$57,200 USD per year is 6th in the world, slightly higher than the United States.

The economy depends heavily on exports, particularly in consumer electronics, information technology products, pharmaceuticals, and a growing service sector. In recent years, Singapore has attracted major investments in pharmaceuticals and medical technology production - and the government is expected to continue efforts to establish Singapore as Southeast Asia's financial and high-tech hub.

The currency unit here is the Singapore dollar (cents are the sub-unit), with bills coming in denominations of \$2, 5, 10, 50 and 100. Though it fluctuates, the exchange rate typically ranges from \$1.2-1.4 SGD to \$1 USD.

# U.S. MILITARY IN SINGAPORE

While there is no U.S. “base” in Singapore, the U.S. Navy has had a presence in Singapore since 1968. Then, the U.S. Navy Regional Contracting Center (NRCC) Singapore maintained a small office here to coordinate maintenance of U.S. Navy ships throughout Southeast Asia.

In 1990, the governments of Singapore and the U.S. signed a Memorandum of Understanding, allowing the U.S. Navy to utilize certain Singapore Ministry of Defence facilities. Commander, Logistics Group Western Pacific (CLWP) moved to Singapore in July 1992, following the closure of the U.S. Navy base in Subic Bay, Republic of the Philippines.

Through most of the ‘90s, the Navy maintained a presence of approximately 150 uniformed and civilian personnel in Singapore. The U.S. Air Force, which has a small number of personnel working from Paya Lebar Air Base, provided support services to U.S. military personnel and aircraft transiting through Singapore.

In 2007, Navy Region Singapore was officially established, and the Navy assumed all administrative and facility support functions from the Air Force, including housing, family support services, force protection, and Morale, Welfare and Recreation, among others.

Today, the Singapore-based U.S. military community includes more than 1,000 active duty, civilian personnel and family members, distributed among 20 commands.



**Commander, Logistics Group Western Pacific (COMLOG WESTPAC)/ Commander Task Force 73 (CTF 73)** is the U.S. 7th Fleet’s principal logistics agent and coordinates theater security cooperation (TSC) activities in South and Southeast Asia. As the logistics agent, COMLOG WESTPAC coordinates the resupply of food, ordnance, fuel and repair parts for U.S. Navy ships deployed to the 7th Fleet area of operations. To accomplish this, COMLOG WESTPAC has operational oversight of about 50 Military Sealift Command ships on any given day. The command’s area of responsibility spans 48 million square miles of the Pacific and Indian Oceans stretching from the mid-Pacific to the east coast of Africa, and from the Kuril Islands in the north to the Antarctic in the south. COMLOG WESTPAC also provides voyage repairs to U.S. Navy ships through contracted commercial repair facilities throughout Southeast Asia, and acts as 7th Fleet’s agent for diving, salvage and towing.

As the U.S. 7th Fleet’s TSC agent, CTF 73 conducts advance planning, organizes resources and directly supports the execution of maritime exercises, such as the bilateral series Cooperation Afloat Readiness and Training (CARAT) with Bangladesh, Brunei, Cambodia, Indonesia, Malaysia, the Philippines, Singapore, Thailand and Timor-Leste; the Naval Engagement Activity (NEA) with Vietnam and the multi-lateral Southeast Asia Cooperation and Training (SEACAT) with Brunei, Indonesia, Malaysia, the Philippines, Singapore, and Thailand.

CTF 73 is also the executive agent for Pacific Partnership, an annual multilateral humanitarian assistance and disaster relief preparedness mission conducted in the Indo-Asia-Pacific region.

Beginning in 2013, when USS Freedom (LCS 1) became the first littoral combat ship to complete a rotational deployment to Southeast Asia, CTF 73 assumed tactical control (TACON) of rotational deployments of LCS as part of America’s rebalance to the Asia-Pacific.

Located inside the PSA (Port of Singapore Authority) Sembawang Terminal, COMLOG WESTPAC has approximately 100 military and civilians assigned and is the largest command in Singapore.



**Military Sealift Command Ship Support Unit Singapore (MSC SSU)** provides engineering, logistics and information technology support to government-owned, government-operated ships in Southeast Asia. SSU Singapore routinely contracts with commercial shipyards in several Asian countries, including the Philippines, Thailand, Singapore, Japan, Korea, Australia and India to provide emergency or voyage repairs to Military Sealift Command ships.



**Fleet Logistics Center, Site Singapore (FLC)** manages contracting and husbanding agent services throughout Southeast Asia. FLC responsibilities include traditional supply functions such as household goods management, postal services, fuels management and material warehousing and transportation. Regional FLC detachments led by the FISC Site Singapore support these efforts.



**U.S. Coast Guard Detachment Singapore** conducts inspections of U.S.-flagged vessels repaired or operated in Asia, as well as inspections of foreign-flagged ships that conduct commerce with the United States. The detachment conducts investigations for maritime casualties involving U.S. vessels, and Coast Guard documented and licensed Merchant Mariners.



**Commander, Destroyer Squadron (DESRON) 7** is a forward deployed surface staff that conducts prompt, sustained operations at sea in support of United States national policy and maritime security objectives in the 7th Fleet’s area of responsibility. As Commander, Task Group 73.1 (CTG 73.1), DESRON 7 also plans and executes bilateral exercises with nine different countries to build relationships and interoperability in the region. Additionally, DESRON 7 exercises tactical command for littoral combat ships rotationally deployed to 7th Fleet on behalf of CTF 73. Within Singapore, DESRON 7 is known as the Maritime Staff Element for CTF 73.



**Navy Region Center Singapore (NCRS)** is considered the “host command” for all military units in Singapore. NCRS is responsible for Department of the Navy (DoN) and other Department of Defense (DoD) services in Singapore, and administers family housing, facilities, and Morale, Welfare and Recreation programs, as well as family support services.



**Military Sealift Command Far East (MSCFE)** operates government-owned and contracted ships to provide direct fleet support, platforms for special projects and strategic sealift and transportation operations for the United States Pacific Command and its components.

The command plays a vital role in the Western Pacific and Indian oceans by operating an average of 48 ships that replenish fuel and supplies to U.S. Navy forces at sea, move military cargo between ports and perform special operations such as responding to humanitarian crises. MSCFE also supports Department of Defense agencies and the Department of State, as requested.



**Naval Criminal Investigative Service (NCIS)** maintains a field office in Singapore, and manages NCIS offices in five locations in the Southeast Asia region. Special agents, physical security specialists and field analysts maintain relationships with law enforcement and security services in foreign ports. Their work directly supports U.S. Navy port visits throughout the region.



**730th Air Mobility Squadron, Detachment 2; 497th Combat Training Flight:** The U.S. Air Force presence in Singapore is located at Paya Lebar, a Republic of Singapore Air Force base. The Detachment coordinates and moves military personnel and cargo in and out of Singapore, and to other regional locations, and supports U.S./Singapore bilateral Air Force exercises.

**Other Commands in Singapore** include Navy Medical Research Center - Asia, Army Veterinary Services detachment, Defense Contract Management Agency, and Special Operations Command Pacific Logistics Support Facility.

# PREPARING FOR TRANSFER

## Overseas Screening

Upon receiving orders, you should immediately begin the process of overseas screening for you and your family at your current command. This typically includes medical exams and an interview with a command representative per OPNAVINST 1300.14D. Your command's admin department will have details on the screening process, so contact them immediately. If you or your family needs to be enrolled in the EFM program, do so at your present command, as this is part of your overseas screening process.

You have 30 days from the receipt of your orders to complete your screening. Once your screening is completed, your command or Personnel Support Detachment (PSD) will need to make a report of your overseas screening (either satisfactory or unsatisfactory) in BUPERS Online (BOL). If you have family members accompanying you, a dependent entry request message must be sent by your parent command to COMLOG WESTPAC, per instructions found at <http://www.npc.navy.mil/CommandSupport/DistributionManagement/Procedures/Dependent+Entry+Approval.htm>. Once received, COMLOG WESTPAC admin will send a dependent entry approval message, which you will need before picking up your airline tickets and initiating your PCS move.

## Power of Attorney

A power of attorney may be useful or necessary, especially if the service member will be absent from home for extended periods of time. A power of attorney may be tailored and limited to fit your particular needs, enabling the holder (usually a spouse or trusted friend) to act on behalf of the member.

General powers of attorney are strong documents, which enable another person to act on your behalf in all matters and should only be used in limited circumstances. A judge advocate can authorize a special power of attorney. If you need a power of attorney before transferring, contact the nearest Legal Assistance Office.

## Preparing Financially

Relocating costs money, much of it up front. Though you will be reimbursed for many of these expenses, plan on spending up to \$3,000 for the move. Civilians should consider taking the maximum salary advance to be prepared for costs associated with off-base housing which can cost in excess of \$15,000. This may require your starting a savings account early. Some anticipated costs may include:

- Traveling expenses such as meals, drinks, taxi fares, rental cars, hotels, etc.
- Pet quarantine expenses & veterinary fees.
- Expenses for dining out while waiting for temporary or permanent housing. Although you will be able to file for TLA, you will need to pay up front for lodging until you are assigned military housing.
- Money for the purchase of a car.
- Auto insurance (most companies require a year's premium up front, which can be 1,500 SGD, depending on your policy and particulars).
- Deposits for telephone, cable and internet services (may be waived in certain cases).
- Two months rent (~\$10,000) advance rent as a security deposit if residing on the economy.

## Post Office Box

In Singapore, you'll receive your mail at a post office box at our military postal facility. With a copy of your orders, your sponsor can obtain a PO box for you 90 days before your transfer. This is encouraged, as it allows you time to make change of address notifications for your bank, utility companies, investment managers, mail-order companies and magazine subscriptions before you leave. Additionally, if you exceed your baggage limits for your airline flight, you can mail ahead excess items to yourself.

The command's official mailbox is only to be used for official mail and not for personal mail.

## Preparing for the Flight

Regardless of your carrier and routing, the flight to Singapore is long—more than 28 hours if traveling from the East Coast! Making connections, clearing customs, tracking luggage—all become arduous when crunched into a couple of days, especially with the time zone changes. Get ready and rest up!

Good preparation makes the trip easier. Ensure luggage has identification tags (but avoid using military rank). To avoid jet lag, drink lots of water during the flight and avoid alcohol. Bring a sweater and wear pants with socks and close-toed shoes, as the planes often get very cold during the long trip.

If coming from CONUS, your plane will cross the Pacific and stop in either Tokyo or Hong Kong for refueling before continuing to Singapore. Most flights from the United States arrive late at night at Singapore's Changi Airport, usually around midnight. Your sponsor should meet you at the airport; if he/she does not, contact the COMLOG WESTPAC Battle Watch Officer at (+65) 6750-2594 for assistance.

## Passports/Visas

An active duty member with a valid military ID and orders does not need a passport to come to Singapore. However, you will need a passport to be able to qualify for basic services (cell phone, etc.) in Singapore. Additionally, it is highly recommended to get one if you plan on visiting other countries in Southeast Asia. Please read the following information carefully, and apply for your required passport(s) at least eight weeks before your desired PCS transfer date to allow time for processing.

Active duty personnel PCSing to Singapore are recommended to have an official passport (brown cover) in their possession, and are strongly encouraged to have a tourist passport (blue cover) as well. Family members and civilian personnel are required to have a "no-fee" passport upon arrival, and are strongly encouraged to have a tourist passport (both have blue covers). When you arrive at immigration at Singapore's Changi Airport, present one of your passports to the agent, and they'll stamp it with a visitor's permit valid for 90 days.

When you check in to your command, all passports for you and your family will be collected; your admin representative will take them to the Immigration and Checkpoint Authority, where each is given a special Foreign Identification Number stamp (FIN). The FIN serves as proof that you're legally in Singapore, and is valid through your projected rotation date (PRD) as stipulated on your orders. Presenting your passport with FIN stamp is mandatory to start many services in Singapore, such as cable/internet service, getting a library card, or opening a bank account. Also, with your FIN in your passport, you no longer need to complete immigration cards when traveling into/out of Singapore. You pass through the Residents line instead of the Visitor line and merely present your passport to the immigration officer, who makes a computer notation, and you're on your way.

Visas are not required for U.S. citizens to enter Singapore, but they are required to visit nearby countries (Indonesia and the Vietnam, for example). Before visiting any country, always check that country's embassy Web site for any visa requirements.

## Medical Requirements

As noted earlier, active duty military and family members are required to undergo overseas medical and dental screenings immediately upon receipt of orders to an overseas location. Detailed guidance is found in NAVMED 1300.1. The screening must be completed in the timeline and process as noted in the "Overseas Screening" on page 7.

Singapore's military community has a limited medical staff. There is no military hospital, but the Medical Aid Station care team is comprised of a contract physician assisted by an independent duty corpsman. A Navy dentist is also resident on staff. Cases that cannot be handled by the medical team are sent to physicians or hospitals in the civilian community, where the standard of care meets or exceeds that available in the U.S. under the military TRICARE system.

For family members with chronic health problems or who require long-term or specialized treatment, please ensure these are addressed during your overseas screening. If the physician completing your screening has any questions, please have them contact the Sembawang Medical Aid Station staff at commercial (+65) 9672-2643 regarding the availability of certain treatments. Failure to divulge this information could adversely impact your health and the well-being of your family members. Additionally, such failure may result in the early return of your family members at your expense, and may subject you to charges under the Uniform Code of Military Justice.

## Household Goods Shipments

Contact your detaching command's personal property office (PPO) early for a full explanation of your entitlements, and to make appointments for household goods pickup (see more on this topic under Personal Property).

## Temporary Lodging

Singapore's Temporary Lodging Facility (TLF) is the Navy Gateway Inn & Suites (also known as the Sling Inn), which is operated by NRCS and is located within the Sembawang housing area. These units are 2 and 3 bedroom, fully-furnished, apartment-style flats. Each flat has a multisystem color television, full kitchen facilities, including microwaves, pots, pans, and table settings for six. Irons (220 volts) and ironing boards are available in each apartment, as are washers and dryers. If you have children, it is recommended that you mail or MPS a package with favorite toys, games, etc., to your sponsor a few weeks before departing for Singapore.

Pets are allowed in temporary living quarters. You can make temporary lodging reservations at the Navy Gateway Inn & Suites by calling 1-877-628-9233, commercial (+65) 6752-8245, DSN (315) 421-2299, or online at [www.dodlodging.net](http://www.dodlodging.net).

# PERSONAL PROPERTY

Generally, people transferring to Singapore are eligible for three personal property shipments: an express shipment of non-furniture items (may include clothing, bicycles and small appliances); a main household goods shipment; and a shipment of bulky items to go to non-temporary storage in the U.S. (washers, dryers, excess furniture, etc.).

Household goods shipments typically take 60-75 days to arrive from CONUS; shipments from Europe can take up to a month longer. Again, it's imperative to work with your personal property office (PPO) as early in the PCS process as possible.

## Express Shipment

You are entitled to one express shipment (sometimes called unaccompanied baggage). This shipment travels by air freight and typically takes 30-45 days to arrive in Singapore, depending on the point of origin. This shipment is limited to 1,000 pounds, excluding professional material, and may not include furniture.

Current Navy Region Center Singapore policy requires that all uniformed personnel reside in government-leased housing until housing reaches 95% occupancy. When housing is at 95% occupancy you may request to live on the economy through the housing office. Assignment to your permanent, government-leased quarters typically takes less than one month. If assigned to government quarters before your household goods arrive, loaner furniture and hospitality kits, containing dishes, cookware and utensils, are available for you to use for up to 90 days while awaiting your household goods.

With this in mind, items you may want to include in your express shipment are: bed linens, towels, a small TV (220V or multi-voltage recommended), a 60-90 day supply of prescription medications, an extra pair of glasses/contacts, professional books, uniforms and equipment needed in the performance of official duties, a computer, alarm clocks, bicycles, toys, swimwear and pool toys, video games and board games, sidewalk chalk for younger kids, comfortable walking shoes, hand tools, an iron and ironing board, clothes hangers and any additional items that will make your family comfortable during the transition.

## What Should I Bring to Singapore?

Most electrical outlets in Singapore homes (to include those in the Sembawang housing area) are 220-230 volt, 50 cycle, with three-prong outlets. If your appliances, TV, computer and other items aren't dual-voltage, they must be plugged into a transformer, which the housing office will provide. To determine if your item is dual-voltage, check the cord: it will usually indicate if the item is 110V only, or if it can safely operate within a voltage range, usually 110-240V. Most of the Sembawang housing has been retrofitted with 110V, American outlets.

Your U.S. television will work with the free cable TV system in the Sembawang housing area, or with the StarHub cable TV box (should you opt for this pay service).

## Particular Items to Bring

You can find most any grocery, home and clothing items you want in Singapore, though sometimes at a much higher price. You might want to consider bringing certain consumable items with you if you're unsure of their availability here. For example, if your child will only eat a certain brand of canned soup, you can include a supply of these in your household goods.

Other items you might want to consider bringing include: vitamins, personal hygiene products, baby food and baby products, spices, particular ethnic products, an oven thermometer, uniforms (the NEX only stocks a few uniform items), limited winter clothing for traveling, clothing for large individuals as most local clothing comes in smaller sizes to include shoes, storage units, tools, a gas grill (grills are expensive here; gas tanks are easy to get, and adaptors to match your U.S. grill are available), outdoor furniture, area rugs, a holiday tree and decorations including lights, heartworm pills for pets, vacuum cleaner belts, children's games and toys, lawn and garden tools, extra children's clothes, hair products, sewing and crafts supplies, and any other canned or dry food items (cake mixes, etc). If in doubt of a product's availability in Singapore, ask your sponsor.

## Vehicle Shipments Not Authorized

You will NOT be entitled to ship a privately owned vehicle (POV), motorcycle or moped to Singapore, due to the country's strict customs laws and restrictions on vehicle imports. This import restriction applies regardless of where your vehicle was purchased.

You may be entitled to have your vehicle stored at government expense (in a government-contracted storage facility, or at a facility of your choice/location) for the duration of your tour here. If overseas, your PPO can arrange to ship your vehicle to CONUS at government expense, where it can then be stored. Contact your PPO for details.

## What Should I NOT Bring to Singapore?

Because of storage limitations, you're strongly discouraged from shipping major appliances (washers, dryers, chest freezers, dishwashers, refrigerators and stoves) to Singapore. The housing office will provide these. If authorized to live off base, many homes have appliances included as part of the lease.

Several items are prohibited from importation into Singapore, and should not be included in your household goods. If discovered, you could face stiff fines ranging into thousands of dollars, or even jail time. These include:

- Alcoholic beverages. Though alcohol is legal in Singapore, it must be purchased in-country from authorized retailers (the Navy Exchange at Sembawang carries a wide selection of beer, wine and spirits).
- Controlled drugs and psychotropics (LSD, heroin, cocaine, ecstasy, mescaline, marijuana, etc). The penalty for importation is death.
- Pornography. Singapore has strict censorship laws regarding pornography in video, print and software formats. Many movies that merit an R or NC-17 rating due to sexual content might be considered obscene under Singapore law, so if in doubt, leave them behind.
- Tobacco products. These are legal, but must be bought here.
- Electronic cigarettes. These are illegal in Singapore.
- Plants, their seeds, or soil (to include bagged potting soil).
- Products made from endangered species.
- Fireworks, explosives, and ammunition.
- Firearms, bows-and-arrows, BB guns and paintball guns (basically, anything that fires a projectile - excluding Nerf-style toys - could fit this category. If in doubt, ask your sponsor).
- "Pirated" DVDs, CDs, and copyrighted items.
- Cigarette lighters in the shape of revolvers or handguns.
- Radio equipment, such as HAM radios, CBs or walkie-talkies (special permits are required).

# PETS

Singapore requires you to coordinate shipment to a booked quarantine space for your pet(s). Bringing pets into Singapore is expensive (often \$1,000 USD or more) and time-consuming, but it can be done. You can either do the work yourself, or hire a pet agent to complete the import arrangements (for a fee, of course). Check with the agent to make sure the services he/she offers match your needs. If you use such a service, usually you will need a pet agent from your country of origin, plus another pet agent from Singapore. If you hire a pet agent from Singapore, they can act as a liaison between you and the Quarantine Station (again, for a fee) and the AVA (Agri-Food and Veterinary Authority of Singapore). They can assist with processing necessary forms, scheduling fee payments, booking a quarantine space, arranging for additional transportation, and delivery of your pet upon completion of a 30-day quarantine period.

Shop around online for pet agency services. No private pet agents are endorsed by the U.S. government.

If you're contemplating bringing a pet, read the following pages carefully and then visit the AVA Web site at [www.ava.gov.sg](http://www.ava.gov.sg) for the latest requirements, fees, and required forms.

## Types of Pets Allowed

While you may bring pets to Singapore, there are several things to consider regarding types and sizes of pets. According to Singapore law, only dogs, cats, rabbits, guinea pigs, hamsters, gerbils, mice, chinchillas, red-eared sliders (a type of terrapin), and many types of ornamental birds and fish may be kept as pets. It's illegal to keep reptiles such as snakes and lizards, exotic animals (tigers, lynx), monkeys, spiders, insects or any endangered species as pets.

Additionally, certain breeds of dogs are considered dangerous, and their import into Singapore is prohibited. These breeds, called "Category A" dogs, include:

- Pit Bull Terriers (including the American Pit Bull Terrier, American Staffordshire Terrier, American Bulldog and Staffordshire Bull Terrier)
- Akita
- Tosa (also called Tosa Inu)
- Neapolitan Mastiff
- Any cross of any Pit Bull, Akita, Neapolitan Mastiff or Tosa

Certain other breeds are known as "Category B" dogs. These animals can be imported into Singapore, but must be leashed and muzzled at all times when in public. These breeds include:

- Bull Mastiff
- Bull Terrier
- Doberman Pinscher
- German Shepherd or related breeds
- Rottweiler
- Perro de Prensa Canario

In Sembawang's government-leased housing, pets are limited to dogs, cats, rodents, caged birds and fish. Animals kept in housing must be registered; simply complete a form in the housing office before bringing your animal home. For those residing on the economy, many landlords will impose similar limits on pets.

## Importing Pets Into Singapore

Singapore is a rabies-free country, and the law requires most animals coming into the country to undergo a rabies quarantine period, ranging from 10 to 30 or more days, depending on country of origin and types of rabies tests performed.

The requirements are exacting, and the process can be expensive. Below is a list of requirements one must satisfy to import a dog or cat into Singapore (prices are current as of Summer 2011).

## Steps Upon Your Arrival

If using a Singaporean pet agent, he/she will meet you at the airport. Items (1), (2), (3), (5), and (6) should be covered in your contract agreement with the agent.

(1) Upon arrival, your pet(s) will be examined by a Singapore AVA veterinarian at Changi Airport. If your flight arrives during office hours, this cost is approx. \$80 SGD; if after hours, the cost can be as high as \$200 SGD.

(2) If cleared by the veterinarian to enter Singapore, your animal(s) is transported by government truck to the Sembawang Animal Quarantine Station. The cost of this trip is \$74 SGD.

(3) Your animal(s) will receive another rabies shot soon after arrival in Singapore. The cost of this vaccination is \$65 SGD.

(4) Your animal(s) will likely spend 30 days at the Sembawang quarantine station; you may visit during designated visiting hours (Mon-Sat, 4-5:30 p.m.).

(5) Upon completing quarantine, you must obtain a Singapore Animal License for your pet(s). The cost is \$14 for sterilized animals, and \$70 for intact animals.

(6) With license in hand, you're free to bring your pet home!

Rules are subject to change at any time. Please check the AVA Web site at [www.ava.gov.sg](http://www.ava.gov.sg) for the latest requirements. For further assistance, call the AVA at commercial (+65) 6227-0670, or e-mail them at [AVA\\_Import&Export\\_Animals@ava.gov.sg](mailto:AVA_Import&Export_Animals@ava.gov.sg).

## Preparation Prior to Arrival

1. The first thing you need to do is confirm that you have a quarantine space for your pet. Then make a pet reservation for your animal on the airline that's bringing you to Singapore. Pets are often accepted on a first-come basis, and slots are limited. For small breed animals, airlines have a two-per-flight limitation for carry-on (inside cabin) pets. This can cost you as little as \$125 USD for cabin space. Costs for pets brought on as excess baggage or cargo can be significant (often \$200-\$600 USD) depending on the airline, size of your animal, and distance traveled. Some airlines place restrictions on shipping animals based on temperatures at origin, destination or any stops in between; others require specialized crates depending on animal type. Check with your airline for details. If carrying pets inside the cabin, ask to be routed via Japan versus Hong Kong, as pets are prohibited during layovers in Hong Kong.
2. Ensure your animal has a current rabies vaccination that will be valid when it arrives in Singapore. This vaccination must be given at least one month before arrival. Keep the label from the vaccine bottle. Your animal must also have a microchip; ensure you note where it's implanted, and keep its registration number handy.
3. At least 30 days after vaccination, your veterinarian must complete a Rabies Antibody Titre Test. Ensure you get a copy of the results. If your vet clinic's lab facilities cannot perform this test, Kansas State University's lab does. Learn more at <http://www.vet.ksu.edu/depts/dmp/service/rabies/favn.htm>.
4. At least 90 days before arrival, reserve a space for your pet at the Sembawang Animal Quarantine Station (about 10 min. drive from the Sembawang housing area). For the necessary reservation forms, call the quarantine station at (+65) 6227-0670. About a month prior to your arrival, the quarantine station will supply you with a quarantine reservation code, which you'll need to apply for a pet import license. The cost of the 30-day quarantine in an air-conditioned room is \$787 SGD (note: this is a reimbursable item with a maximum of \$550 USD that should be submitted to CSD Singapore as a supplemental claim after the pet has been released from quarantine and a certificate of successful quarantine has been issued).
5. The next step is the most complicated. Your animal must be examined by a licensed government veterinarian at your current location. Your animal will be classified as Category A, B, C or D depending on where you're originating from. All animals originating in Japan, Hawaii or Guam will be "Category B" animals; those originating anywhere else in the U.S. are "Category C" animals. On the AVA website, find the appropriate "Veterinary Conditions for Importation of Dogs/Cats" form for your country, and print it out. This form has detailed instructions for your veterinarian, who must complete and stamp it.
6. Exactly 30 days prior to arrival, you'll want to apply for an import license from the AVA. You can complete this form online at [www.ava.gov.sg](http://www.ava.gov.sg) (under "Animals and Plants Section"). You'll need to have your quarantine reservation code to complete this step. Be sure to include copies of the Rabies Antibody Titre Test, vaccination certificate, label from vaccine bottle, microchip ID code, and contact info for the veterinarian administering the vaccine. The cost for this license is \$50 SGD.
7. Five days before arrival, notify the Changi Airport Animal and Plant Quarantine Station of your flight details. Call them at commercial (+65) 6545-7522.



# DRIVING IN SINGAPORE

Driving in Singapore can be daunting to the newcomer, though it becomes easy with a little practice. Traffic in Singapore moves on the left side of the road, as it does in England and Japan; steering wheels are on the right hand side of the car. Traffic signs are similar to those found in Europe or Japan. Before arriving, it's advised you familiarize yourself with Singapore's traffic laws and road signs (a good site is [http://en.wikipedia.org/wiki/Road\\_signs\\_in\\_Singapore](http://en.wikipedia.org/wiki/Road_signs_in_Singapore))

## Driver's Licenses

By agreement with the Singapore government, U.S. military personnel, family members and civilians can drive vehicles in Singapore with a valid U.S. driver's license upon completing a one-day driver's orientation course (free, conducted by the NRS Public Safety Department). Graduates receive a driver's card that expires concurrently with their stateside license; drivers must keep this in their possession at all times.

Those who desire to ride a motorcycle in Singapore must have completed a Navy-approved motorcycle safety course, have a valid stateside motorcycle license, and apply for a Singaporean Motorcycle License. A driver's card does not permit a person to operate a motorcycle legally in Singapore. Navy-approved motorcycle safety courses are not offered in Singapore; this requirement would need to be satisfied before leaving your current location and updated as required at your own expense.

For more information on driving requirements and the driver's orientation course, contact Public Safety at DSN (315) 421-2535, commercial (+65) 6750-2535.

## Auto Insurance

You must obtain liability insurance to operate a vehicle in Singapore. Most stateside carriers (including USAA) do not write auto policies for Singapore, so you must obtain insurance from a local carrier. Your sponsor can help you with this. Most insurance companies in Singapore require a year's premium up front, which can be \$600-1,500 SGD, depending on policy particulars.

Many U.S. insurance carriers (including USAA) will keep your stateside policy in force for as little as \$5 USD a year. This covers you when you drive in the States on leave or TAD, and maintains policy continuity for future discounts when you return to the States. Contact your insurance carrier to see if this service is offered.

## Finding a Vehicle

As discussed in the Personal Property section, customs regulations prohibit the importation of privately owned, left-hand-drive vehicles into Singapore.

Normally, purchasing a vehicle in Singapore is very costly due to the Certificate of Entitlement (COE) program. This plan, implemented by the government to reduce the number of cars on Singapore's roads, requires one to obtain a COE before purchasing a vehicle. Costs of COEs vary, from a few thousand SGD, to more than \$80,000 SGD. And that's just to get permission to buy a car!

Fortunately, U.S. military personnel and civilians are allowed to own one COE-exempt vehicle in Singapore. You can purchase a used vehicle from a departing service member or U.S. Embassy employee, or you can purchase one new. Vehicle purchase costs vary based on vehicle condition/age/type, ranging from \$1,000 USD for a decade-old sedan to \$40,000 USD and up for a new SUV. Your sponsor can provide more information on vehicle options.

## Auto Registration and Taxes

Registering a vehicle in Singapore can be a time-consuming and complex affair requiring multiple trips to different government agencies. Many people find it convenient to hire a local vendor to do this for them. Should you choose to do it yourself, the NRCS offices in Bldg. 7-4 will provide you with step-by-step detailed instructions.

Vehicles in Singapore are required to undergo an annual inspection, and road taxes are due every six months (approx. \$800-1,200 SGD depending on vehicle size/age) but are reimbursable by the government. Again, you can do this yourself, or use a local vendor to accomplish this. Talk with your sponsor for details.



# HOUSING

Navy Region Center Singapore currently has a mandatory government-assigned housing policy for all uniformed personnel until housing exceeds 95% occupancy. Upon arrival in Singapore, all personnel (officer and enlisted) are assigned to government-leased housing, based on rank and family size.

Should adequate government-leased housing not be available, you will be authorized to find a home in the community. The housing office provides those authorized to reside off-base with a referral list for off-base rentals and agencies. For more information, contact housing at DSN 315-421-2451.

## Family and Unaccompanied Housing

The housing office manages 113 family housing units and 42 unaccompanied personnel units within the Sembawang housing area. All housing is leased from the Singapore Ministry of Defence (MINDEF). These residences, all built between 1920 and 1950, are of four varieties: British Colonial Bungalows (3 bedroom), Brick Bungalows (2 bedroom), British Colonial Duplexes (2 bedroom), and three-story flats (4 bedroom for accompanied, 2 and 3 bedroom for unaccompanied personnel).

All family houses are equipped with washers, dryers, fenced yards, refrigerators, gas stoves/ovens, air conditioners, in-ceiling lighting, ceiling fans and cable TV outlets. The electrical system in Singapore, including military-leased houses, is 220 volts/50 hertz cycle, so many electronic items purchased in the States require transformers to function. Only bungalows, duplexes and family flats are equipped with 110V/50 for American appliances. Housing provides transformers based on housing type.

Housing units have cable TV boxes carrying six Armed Forces Network (AFN) channels free of charge. Telephone and internet service, as well as commercial cable TV, are available through commercial providers StarHub and SingTel, among others.

Most housing types do not have closets (using wardrobes instead), and storage space is quite limited. There are no government facilities in Sembawang for storing excess furnishings, and the facilities on the economy can be expensive. It's best to leave bulky or rarely used items in the States, in a long-term storage facility as arranged by your current personal property office.

## Housing Eligibility

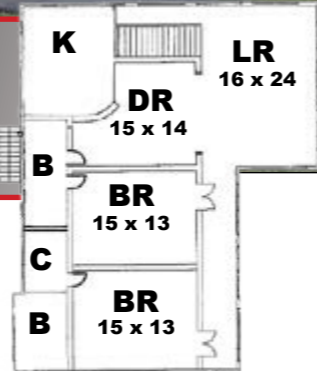
Once you have orders to Singapore, ask your sponsor to provide the housing office with a copy of your orders, estimated arrival date, family composition and contact e-mail. The housing office will send you a welcome e-mail and the housing application form (DD 1746). Housing assignments are made according to the above eligibility matrix and the date you check into housing upon arrival to Singapore (military members have priority).

All housing applications must be accompanied by a copy of your orders, dependent entry approval, and a record of emergency data (your page 2), to verify your family members.

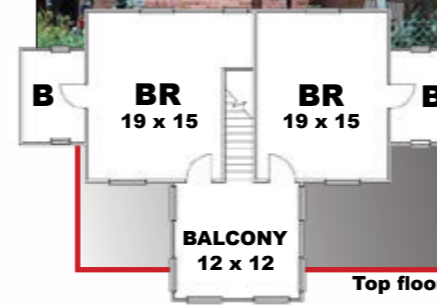
Availability, family size and family configuration are primary considerations regarding whether a two, three or four bedroom unit is assigned.



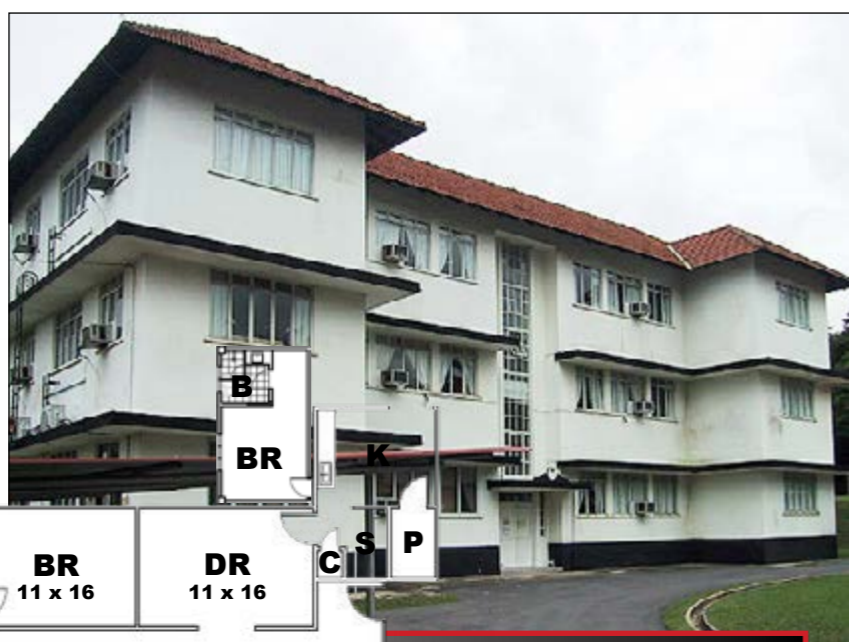
2BR Duplex



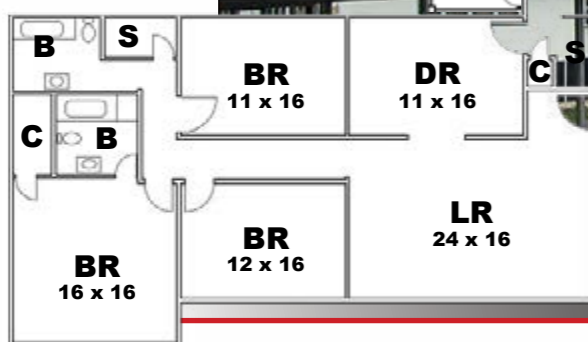
2BR Bungalow



Pay Grade	3BR Bungalow	2BR Bungalow	2BR Duplex	4BR Flat
O6 GS 15	✓	✓		
O5 GS 13-14	✓	✓	✓	
O4 GS 12	✓	✓	✓	✓
O3E GS 7-11	✓	✓	✓	✓
O3 GS 7-11		✓	✓	✓
O2 GS 7-11		✓	✓	✓
O1 GS 7-11		✓	✓	✓
W4-W5	✓	✓	✓	✓
W1-W3		✓	✓	✓
E8-E9	✓	✓	✓	✓
E7		✓	✓	✓
E1-E6		✓	✓	✓

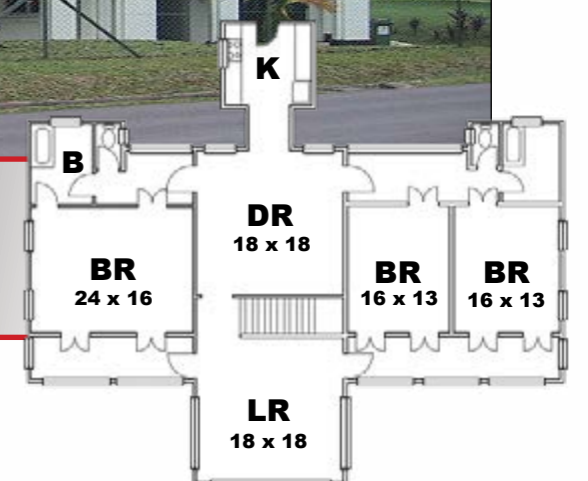


4BR/3BA Flat



3BR Bungalow

(see previous page for photo)





# GETTING SETTLED IN SINGAPORE

When you arrive in Singapore, your sponsor will meet you and your family at Changi Airport and bring you to the temporary lodging facility, the Navy Gateway Inns and Suites (NGIS). In the event something should occur and your sponsor cannot meet you, go to the taxi line (or queue) and tell the taxi driver to take you to 295B Durban Rd (Postal Code 759638). The taxi fare from the airport to Sembawang is approximately \$35 SGD (about \$25 USD). You may want to get Singapore Dollars from a money changer or ATM before leaving the airport. There is no ATM near the lodging facility.

Tell the taxi driver to take the SLE to the Yishun exit. Continue straight until you reach Sembawang Road; turn right on Sembawang. Turn left on Durban Road, NGIS will be on the left side. You may wish to ask the taxi to wait, as your room may be quite far from check in.

The phone number to NGIS is (+65) 6752-8245.

You may be jet-lagged for a few days, but some find the best way to acclimate is to jump in and begin exploring their new neighborhood. Here are a few things you'll want to know during your first days here.

## Sembawang Community Shuttle

Navy Region Center Singapore (NRCS) operates a shuttle service which runs every 30 minutes from 6 a.m. to 6:30 p.m., Monday-Friday through the housing area. The shuttle begins and ends each run at Bldg. 7-4 (the central command building) in the Sembawang Port area, making it convenient for those carrying groceries or packages. Look for the van with a "Community Shuttle" placard on the dash, and be prepared to show your ID card on demand. TAD/TDY and PCS personnel have priority for the shuttle before local residents.

## Newcomers' Orientation

The NRCS family services office (FSO) routinely schedules a three day-long newcomers' orientation. Day 1, Sembawang personnel get an overview of all the services available to them. Day 2 is a Local Tour of the Sembawang area, including transportation on busses and the MRT. Day 3 is a Cultural Tour all over Singapore, hitting the major cultural centers: Arab Street, Little India, Chinatown and a bum boat ride down the Singapore River landing at the Merlion. Drivers' orientation course, is offered at least 2 times a month. For details, call the FSO at DSN 315-421-2314, commercial (+65) 6750-2314.

## Trains & Taxis

If you need a taxi, you can request doorstep service by calling City Cab (6552-2222) or Comfort Transport (6552-1111). There is a small surcharge for booking a cab by phone.

When hailing a cab from the street, if there is a red sign ("on-call" or a neighborhood indicating where he lives) in the window, the taxi driver can refuse to take you to your destination. Without this sign, he is obligated to take you, and if he refuses, make a show of noting his taxi number. If that doesn't change his mind, taxi companies are happy to take reports of unhelpful cabbies.

All taxis in Singapore are metered, and most cabs can also accept credit cards. Though rare, if a cab driver tries to take you without using the meter, insist that it be used or you'll report the incident, or if you prefer, take another cab.

## Credit Cards

Credit cards are widely accepted in Singapore, but some grocery stores and smaller shops will only accept cards issued by local banks, if at all. It's a good idea when going out that you carry an ATM card or cash for any purchases that cannot be made with a credit card.

ATMs are plentiful in Singapore, and most all are members of the Plus, Cirrus, or other global networks. ATM fees can be steep, up to \$5 SGD per withdrawal, so consider using them sparingly. ATMs dispensing both U.S. and Singapore currency are available at the NRCS complex.

## Civilian Clothing and Uniforms

Americans are advised to wear off-base attire that blends with local society. Though many Singaporeans do dress in shorts and flip-flops, long pants and buttoned shirts are common. Dress, in general, is a bit more formal than in the States.

Military personnel may wear uniforms off base when transiting to/from home and work, or when visiting other locations on official business (Changi Naval Base, for example). Uniforms are not considered appropriate liberty attire in Singapore. Due to the tropical climate, summer uniforms are prescribed year round. However, many locations in theater, such as Japan and Korea, do switch to winter uniforms.

## You and the Law

All U.S. military personnel, civilians and their family members are subject to Singaporean law and generally come under Singaporean jurisdiction for most criminal offenses. There is no immunity from prosecution granted under the Memorandum of Understanding between the U.S. and Singapore.

As guests, we are obliged to comply with and refrain from activities inconsistent with Singaporean law. Further, we must refrain from involvement in Singaporean politics or internal matters.

Singapore has very stiff penalties for offenses considered minor in the States. Jaywalkers can receive on-the-spot fines of up to \$500 SGD; littering or spitting chewing gum on the ground can incur a fine of \$1,000 SGD. Vandalism of property can earn a fine of \$5,000 SGD, caning, jail time, or a combination of the three. If charged with 'Outraging the modesty of a female' it is a mandatory arrest. Trafficking or selling drugs carries a mandatory penalty of death.

Officials of both governments cooperate in investigating and prosecuting criminal offenses. Singaporean police have the power to arrest you. If you are apprehended by local law enforcement, follow this guidance:

- Comply with police orders; do not resist arrest.
- Go willingly with Singaporean police authorities.
- Politely request the presence of a U.S. Embassy or command representative and/or a U.S. government-provided attorney prior to making any statements.

Should you find yourself in any kind of involvement with law enforcement (even tickets), notify your chain of command immediately.



## DOMESTIC WORKERS

Many families in Singapore retain the services of a domestic helper, finding the convenience of full-time help well worth the cost. Though individual contracts vary, helpers often handle a variety of household duties including all cleaning, cooking, child care and light yard work such as raking. Some helpers do additional duties, such as grocery shopping, pet walking and cleaning the family car. Families living in government housing must have at least one child under the age of 18 or an infirmed adult dependent to be able to hire a domestic helper. Some family housing in Sembawang has helper's quarters in a detached building behind the home, complete with full bath, which makes the arrangement convenient.

Helpers can be found one of three ways: you can retain a helper from a family that's departing; you can work through a local agency to find a helper already in Singapore; or you can use an agency to bring a helper to Singapore from another country.

In any case, there are certain expenses you will incur, based on your helper's experience level, duties or source:

- Helper's salary. These typically range from \$400-600 SGD per month, depending on the helper's scope of duties and experience level.
- Foreign Domestic Worker (FDW) Levy. This monthly levy of \$265 SGD is payable to the Singapore government, and is required to legally employ a foreign employee. This payment is deducted monthly from your local bank account, a must if you wish to employ a helper.
- Insurance. Employers must maintain \$40,000 SGD personal accident insurance, a \$5,000 SGD security guarantee bond, and \$5,000 SGD medical insurance coverage per employee. Any local insurance agency can provide these, and costs typically run between \$150-250 SGD per year. Helpers from certain countries (the Philippines, for example) are also required to post a bond with their native government, which the employer is expected to pay.
- There are additional costs to consider. Employers typically provide the helper's meals, which can certainly impact your monthly budget. Some agencies may pass along fees such as commissions/travel expenses, and passport processing costs.

If you're considering a helper, it's best to talk to a family that currently employs one. In addition, Singapore's Ministry of Manpower requires first-time FDW employers to attend a three-hour workshop to familiarize themselves with all the responsibilities and costs. For more information on helpers, visit the Ministry's website at [www.mom.gov.sg](http://www.mom.gov.sg).



## FORCE PROTECTION AND CRIME

Living and working overseas carries its own force protection considerations beyond those in the States. You should always be mindful of the potential for terrorist attacks, and military members must always remain particularly vigilant.

Singapore is quite peaceful given its population density. Violent crime is very rare – Singapore reported just 14 murders in all of 2014 (Los Angeles, with a smaller population of 3.8 million, reported 480). Violent crimes such as assault, rape and robbery are equally rare. Petty theft incidents (pickpocketing, purse snatching) are also rare, though it's still advised to exercise caution with your belongings when out and about. Remember: low crime does not mean no crime. As anywhere, always be alert to your surroundings, trust your instincts, and chances are you'll be fine.

Importing or merely possessing illegal drugs is punishable by death in Singapore and many other Southeast Asian countries. "Cheating," which includes shortchanging or borrowing without returning, is illegal and vigorously prosecuted. Unwanted touching of a woman can result in charges of "outraging the modesty of a female." Jaywalking, littering and minor traffic offenses all carry stiff fines, and vandalism of property can result in jail time or caning. Before visiting other Southeast Asian countries, you'll need a country-specific force protection brief. Travel to certain countries can be restricted periodically due to heightened threat conditions. The force protection office can help you with these areas.

Newly arriving personnel also receive additional information about Singapore's laws during their newcomers' brief.

As part of your overseas screening, you and your adult family members must complete a level one force protection brief.

Before visiting other countries in the region, travelers are required by U.S. Pacific Command to receive a country-specific force protection brief and as necessary, submit appropriate IATP (Individual Anti-Terrorism Plan) and APACS (Aircraft and Personnel Automated Clearance System) documentation. This paperwork ensures members are accounted for in the event of an incident and to inform them if travel to countries is restricted due to heightened threat conditions. The force protection office can help you with this process.

# EDUCATIONAL OPPORTUNITIES & SCHOOLS

## **Navy College Office**

Singapore does not have a resident Navy college office. Educational services, such as tuition assistance, are provided through Navy College Office in Yokosuka, Japan, DSN 315-243-7749.

## **University of Maryland University College**

A selection of undergraduate courses is offered throughout the year by UMUC, on a five-term calendar. Courses range from Chinese language classes to business and liberal arts selections. Class availability varies by term and is subject to instructor availability. For information on current offerings, contact the UMUC office at DSN 315-241-2306.

## **Elementary and High Schools**

School Liaison Officers are employed to help navigate academic pressures on military children and their families as they move around the world and transfer between school systems. Navy Region Center Singapore's SLO is here to assist you with just about any school-related question.

As we do not have a DoDEA school in Singapore, families eligible for the Non-DoD Schools Program (NDSP) have the opportunity to choose a school option (for students in grades K through 12), including private schools and home school programs, that best meets the needs of their children and family. NDSP provides support and funding for the education of authorized command-sponsored dependents of military members and DoD civilian employees assigned to overseas areas where no DoDEA school is available within the commuting area. The NDSP Sponsor Orientation ([https://content.dodea.edu/VS/pd/ndsp/ndsp\\_orientation/index.html](https://content.dodea.edu/VS/pd/ndsp/ndsp_orientation/index.html)) is provided so that you may become familiar with the NDSP program and processes.

To enroll in NDSP:

1. Gather information about the educational options available and decide which option is best for the family. The SLO has several resources available to assist families with this process. A telephone call with the SLO is highly recommended as your first step in the schools process.
2. To enroll in NDSP, visit the NDSP website and complete the online registration process - <https://registration.dodea.edu/NDSP/privacy-act.cfm>. PCS orders are needed to complete the NDSP online registration process. If full names of dependents are not listed on the orders Dependent Entry Approval is also required. NDSP will process the enrollment and send an email notification to the sponsor and SLO finalizing enrollment in NDSP.
3. Upon receipt of the email notification of approval from NDSP, the sponsor may proceed with completing the application to the school identified in the NDSP enrollment.

Note: The NDSP Step-by-Step Registration Checklist ([http://www.dodea.edu/nonDoD/upload/Step\\_by\\_Step\\_Registration\\_Checklist.pdf](http://www.dodea.edu/nonDoD/upload/Step_by_Step_Registration_Checklist.pdf)) outlines the NDSP registration process.

Please note, NDSP policy indicates:

- – Approval for the enrolment of an eligible minor dependent of DoD sponsor must be obtained prior to enrolling a child in a non-DoD school.
- – Sponsor MUST obtain approval for tuition and other expenses from DoDEA HQ NDSP office prior to incurring any expense.



# CHILD & YOUTH PROGRAMS

## **Part-day Preschool (Ages 3 to 5)**

Navy Region Center Singapore's Child and Youth Program offers a part day preschool program three days per week for three hours per day. The part day preschool program is designed to enrich children's social, cognitive, emotional, physical, and intellectual growth and development. Our staff works in partnership with parents to meet each individual child's needs in a safe, healthy, and nurturing environment. To submit a request for care in the preschool program, please visit [www.militarychildcare.com](http://www.militarychildcare.com).

## **Recreational School Age Program (Grades K-5)**

Navy Region Center Singapore CYP offers a fun, vibrant Recreational School-Age Program (RSAP) for eligible youth enrolled in kindergarten through grade 5. Singapore's RSAP program offers special events, Youth Sports and Fitness activities, extended hours for school-out days. The RSAP program offers facility-based core programming in six core areas: the arts; character and leadership development; education and career; health and life skills; sports, fitness and recreation; and technology. In partnership with Boys and Girls Clubs of America (BGCA) and the 4-H Youth Development Organization, youth can get involved in numerous clubs and events, including: BGCA Fine Arts, BGCA ImageMakers, 4-H Community Club, BGCA TriplePlay and many more options throughout the year.

## **Youth Sponsorship**

Grades K-5: Quarterly Youth Sponsorship Hail and Farewell events are held for youth in grades K-5. Please see the FFR Flyer for more information about this quarter's Hail and Farewell event.

Grades 6-12: Students moving to Singapore can participate in the Youth Sponsorship Program (YSP) designed to assist incoming youth (grades 6-12) with their transition to Singapore. Youth Sponsors are paired with incoming youth to help alleviate some of the initial stressors of relocating. By establishing a peer-to-peer connection between youth currently in Singapore and youth moving here, incoming youth can meet and make friends, learn more about schools in Singapore, join clubs and activities, and make connections within the community.

## **Summer Day Camp (Completed grades K-6)**

Navy Region Center Singapore CYP offers a Summer Day Camp program for eligible youth who have completed Kindergarten through grade 6. Summer Day Camp is offered in weekly sessions and includes opportunities for fun and adventure including field trips and facility-based core programming in six core areas: the arts; character and leadership development; education and career; health and life skills; sports, fitness and recreation; and technology. In partnership with Boys and Girls Clubs of America (BGCA) and the 4-H Youth Development Organization, youth can get involved in numerous clubs and events, including: BGCA Fine Arts, BGCA ImageMakers, 4-H Community Club, BGCA TriplePlay. To submit a request for care in the Summer Day Camp program, visit [www.militarychildcare.com](http://www.militarychildcare.com).

## **Teen Center (Grades 6-12)**

Navy Region Center Singapore's Teen Center provides eligible youth, in grades six through twelve, a chill place to hang out with friends. Singapore's Teen Center offers teen trips, late night fun and adventures, Youth Sports and Fitness activities, extended hours for school-out days, and a Teen Employment Program. The Teen Center offers facility-based core programming programs in six core areas: the arts; character and leadership development; education and career; health and life skills; sports, fitness and recreation; and technology. In partnership with Boys and Girls Clubs of America (BGCA) and the 4-H Youth Development Organization, teens can also get involved in numerous clubs and events, including: BGCA Youth of the Year, 4-H STEAM Camps, BGCA Keystone Club, 4-H Community Club, BGCA Smart Girls and many more options throughout the year.

# SERVICES AND QUALITY OF LIFE PROGRAMS

While there is no U.S. "base" in Singapore, the U.S. Navy has had a presence in Singapore since 1968. Then, the U.S. Navy Regional Contracting Center (NRCC) Singapore maintained a small office here to coordinate maintenance of U.S. Navy ships throughout Southeast Asia.

In 1990, the governments of Singapore and the U.S. signed a Memorandum of Understanding, allowing the U.S. Navy to utilize certain Singapore Ministry of Defence facilities. Commander, Logistics Group Western Pacific (CLWP) moved to Singapore in July 1992, following the closure of the U.S. Navy base in Subic Bay, Republic of the Philippines.

Through most of the '90s, the Navy maintained a presence of approximately 150 uniformed and civilian personnel in Singapore. The U.S. Air Force, which has a small number of personnel working from Paya Lebar Air Base, provided support services to U.S. military personnel and aircraft transiting through Singapore.

In 2007, Navy Region Singapore was officially established, and the Navy assumed all administrative and facility support functions from the Air Force, including housing, family support services, force protection, and Morale, Welfare and Recreation, among others.

Today, the Singapore-based U.S. military community includes more than 1,000 active duty, civilian personnel and family members, distributed among 20 commands.

## Morale, Welfare and Recreation (MWR)

Singapore's MWR programs and facilities are among the finest in the Navy. MWR offers a myriad of programs for the whole family. MWR facilities include:

- **Youth Center:** A leisure and recreation center for children, the youth center offers a variety of hands-on and recreational activities and classes for children of all ages. The center, located in the Sembawang housing area Community Recreation Center (CRC) building on Lagos Circle, is open from 3 p.m. to 6 p.m. Mon-Fri, but the hours can change based on the age of your child. Throughout the summer the youth center will open at 10 a.m. vice 3 p.m. Contact the youth center at [+65] 6752-8273.
- **Fitness Center:** The Fitness Center is an easily accessible and massive ship repair facility that was converted to an indoor fitness center and recently upgraded in several areas to better support the needs of the community. The facility offers top of the line strength and cardio training areas including three free-weight areas, a power lifting area with platform, two cardio areas packed with treadmills, bikes, ellipticals, rowers, steppers, vertical climbers, and a Jacob's Ladder and App Audio with the TVs. In addition to all these multiple strength and cardio options, there is also an indoor Group Exercise Room/NOFFs Zone, Tennis Court, Basketball Court, Racquetball Court, and a FUN, colorful Family Fitness Zone, where the parent or guardian can exercise as youth 9 and under play in an easily supervised soft play area. Small equipment is stationed throughout the Fleet Fitness Center including tires, sledgehammers, battle ropes, punching bags, TRX sets, jump ropes, bands, stability balls, medicine balls, mats, and more! For those that enjoy Group X classes, there are multiple options for classes every day of the week led by dynamic Fitness Instructors or by a Virtual Trainer machine with over 125 pre-programmed class options. Bicycles and other equipment (coolers, tables, sports equipment, etc.) may also be checked out for up to two weeks at a time from the FFC first for Active Duty Military and those PCS-ing in/out of Singapore and second for all others attached to the Installation based on availability. Finally, a laundromat, free Wi-Fi, and locker rooms with showers are also available for all authorized users. The Fleet Fitness Center hours of operation are 5:00 a.m. to 9:00 p.m. Monday to Friday AND 7:30 am to 6:30 p.m. Saturdays, Sundays, and U.S. holidays.
- **Terror Club:** The Terror Club (named after the British Royal Navy discovery vessel HMS Terror) is Singapore's all-hands club, open to U.S., British, Australian and New Zealand Sailors, government civilian employees and their families. Situated in a tropical setting around a 30-meter pool, the Terror Club offers a full-service restaurant and bar, along with games and wi-fi internet, with menu prices far below what you'd pay in town. Open from 11 a.m. to 9 p.m. Mon-Fri, 11 a.m. to 10 p.m. Sat., and 9 a.m. to 9 p.m. Sun. The Terror Club can be reached at [+65] 6759-3694.
- **Sports Complex:** Adjacent to the Terror Club is the Outdoor Terror Club Sports Complex which includes a newly remodeled and very inviting 330 meter pool / children's wading pool, a multipurpose turf field for softball, football, soccer, and track & field events and a newly upgraded sand volleyball court. In addition to these recently renovated outdoor sports areas, there is also a basketball court and two tennis courts for all to enjoy. Sports equipment for these sports may be checked out at the Terror Club ID Checker Guard House. This Sports Complex is also easily accessible by the community and visiting ships docked in Sembawang or for those visiting by bus during port visits. By request, all these sports areas can be reserved for sports or command events. The Sports Complex hours of operation follow the Terror Club's hours of operation; however, the pools are open from 9:00 am to 8:00 pm Monday to Sunday. For more information, or to reserve the fields, courts or pool, please contact the Fleet Fitness Center at 65-6750-2482. Youth Center Note: There is no child development center at Sembawang, nor are there any approved provider homes. Most families either rely on a stay-at-home spouse, employ a live-in helper for this purpose (see page 23), or use a commercial provider on the economy. However, the Youth Center does provide free services.
- **Veterinary Services:** There are no government vet services available for pets in Singapore. Commercial vets are used for all treatments.

## Chapel

The Sembawang community offers a robust ministries program, offering services, counseling, bible studies, religious education and regular fellowship events. Operating from a small 120-person chapel, the chaplain's office conducts Protestant services each Sunday at 9 a.m., with a local priest holding Catholic Mass at 11:00 a.m. During religious holidays such as Easter and Christmas, additional services are added to the schedule.

The COMLOG WESTPAC chaplain's office can be reached at DSN 315-421-2317, commercial [+65] 6750-2317. After hours, the chaplain's duty number is [+65] 9825-5200.

## Hair & Nail Care, Dry Cleaning

A unisex family salon run by two sisters, Kim and Shirley, provides hair care at reasonable prices (a military haircut runs \$12 SGD), comparable to economical shops in the states. Additional hair care facilities can be found in Sembawang Shopping Center, Northpoint Shopping Center, Holland Village and in other areas. Prices are slightly higher than at beauty shops in the States.

Kim and Shirley also run a dry cleaning operation, offering competitive prices. Their shop is located in Bldg. 7-4.

## Medical Aid Station

The Sembawang Medical Aid Station (MAS) consists of a Navy dentist and independent duty corpsmen provide primary medical and dental care to active-duty members. For patients with requirements beyond what the MAS can provide, referrals will be made to an appropriate clinic in town or one the provider hospitals. The standards of medical care in Singapore are among the best in the world, and you should feel comfortable using facilities if you're given a referral.

Singapore is a TRICARE Global Remote Overseas (TGRO) location, and referral and billing services are provided by International SOS, a third party contractor. Families in Singapore will be enrolled in TGRO by the benefits coordinator at the MAS. All medical care is coordinated through the MAS, which is the primary care manager.

The MAS is open 7:30 a.m. - 4 p.m., Mon-Fri, with same-day appointments often possible. Contact them at commercial [+65] 6257-4233.

## Navy Federal Credit Union

Navy Federal Credit Union maintains a Singapore branch, located on the first floor of Bldg. 7-4. Services include check cashing (U.S. currency only), withdrawals, deposits, Western Union transfers (both domestic & international), Bank Wire transfers (both domestic & international), IRAs, CDs, loans, member-to-member/external account transfers, and instant Visa check card issuance. Additionally, NFCU maintains an ATM at the Terror Club that disburses U.S. currency. Membership is open to military, DoD and contractor personnel stationed in Singapore. Hours are 10 a.m. to 2 p.m., Mon-Fri, excluding U.S. holidays. Contact NFCU at 1-888-842-6328.

## Singapore Banking Facilities

If you employ a helper or use the tax-free gas program, you'll need to open an account at a local banking institution in Singapore. Check out the institutions for their specific services. There is a minimum balance required to keep an account open, and minimums vary from bank to bank. When opening a local account, you'll likely need at least \$500 SGD and your passport with its FIN number. Most banking institutions will accept a U.S. check, but it will take 3-6 weeks to clear and there will be a fee for this service.

ATMs are available all over the island. The service charges vary by bank, and balances are listed in Singapore dollars, not U.S. dollars.

## Cash Cage

The Navy operates a cash cage on the first floor of Bldg. 7-4, where you can cash Navy Federal drafts and checks from U.S. banks (\$2,000 daily limit), and exchange U.S. dollars for Singapore dollars. The cash cage is open from 10 a.m. - 3:30 p.m. Mon-Fri, and closed for lunch from 12 p.m. - 12:30 p.m.

## Navy Exchange

The Navy Exchange (NEX) operates an award-winning, 7500 square foot store in Building 7-4. The NEX was completely remodeled in 2015 and offers a range of items including food, snacks, candy, beverages, beer, wine, spirits, sports supplements, laundry & household cleaning supplies, health & comfort items, greeting cards, magazines, stationary, housewares, linens, small appliances, computers, TVs, portable electronics, sporting goods, athletic wear & shoes, sunglasses, watches and more.

Military uniforms are not stocked, but customers can order on line or place a special order at the NEX.

Customers needing specialty food or health & comfort items are encouraged to bring them in their household goods.

NEX Singapore offers a Special Order program for those items not regularly stocked. Orders are shipped from NEX Japan or DeCA Japan depending upon availability. Lead time from Japan is approximately four weeks.

Customers can order from thousands of items at [www.mynavyexchange.com](http://www.mynavyexchange.com) with delivery 10 -14 days. Customers enjoy free shipping when using their Military Star Card.

NEX Singapore is open 0900 - 1800 Mon - Sat. and accepts US or Singapore dollars, major credit cards and the Military Star card. For further information, please call +65-6750-2409 or email [Shelly.Albright@nexweb.org](mailto:Shelly.Albright@nexweb.org)

## Post Office

The Fleet Industrial Support Center runs a military post office adjacent to Bldg. 7-4. Staffed by Navy Logistics Specialists, the post office offers all services found at stateside post offices, from Postal Money Orders to buying stamps and mailing packages. First class letters to/from CONUS typically take 6-8 days; packages can take a bit longer as they must clear a customs gateway. The post office accepts packages bound for offices/bases via the Military Postal System (MPS) free of charge as long as guidelines are followed; check with the post office for details.



# Welcome *Your guide to an easier PCS move abroad.* to Singapore

Click on any of the links below to go to the site:

**Facebook Pages:** 

- [COMLOG WESTPAC](#)
- [Navy Region Singapore](#)
- [Fleet & Family Readiness \(Singapore\)](#)

**Other Useful Websites:**   

- [COMLOG WESTPAC](#)
- [CNIC Singapore Area Coordinator \(SAC\)](#)
- [Navy Region Center Singapore MWR page](#)

This Welcome Guide is an authorized publication for the members of the Sembawang military community, published by Navy Region Singapore Public Affairs office. Contents herein are not necessarily the views of or endorsed by the U.S. government, Department of Defense, Department of the Navy or the Singapore Area Coordinator.