



Forest Service

Uinta-Wasatch-Cache
National Forests
857 South Jordan Parkway
South Jordan, Utah 84095-8594

Web: <http://www.fs.usda.gov/uwcnf>

Twitter: <https://twitter.com/UWCNF>

Facebook: [https://www.facebook.com/pages/US-Forest-Service-Uinta-Wasatch-Cache-National-](https://www.facebook.com/pages/US-Forest-Service-Uinta-Wasatch-Cache-National-Forest/1477262249207367)

[Forest/1477262249207367](https://www.facebook.com/pages/US-Forest-Service-Uinta-Wasatch-Cache-National-Forest/1477262249207367)



News Release

Media Contact: KJ Pollock (801)
558-8016
<mailto:kjpollock@fs.fed.us>

FIRE PERSONNEL CONTINUE TO IMPLEMENT THE PONDEROSA PINE RESTORATION PROJECT

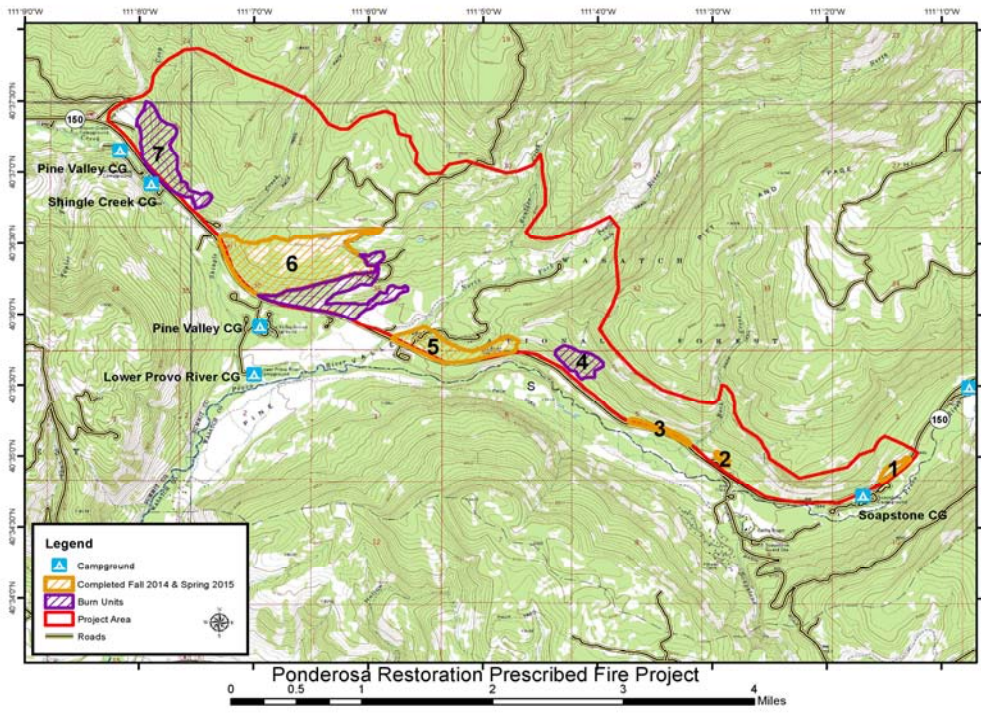
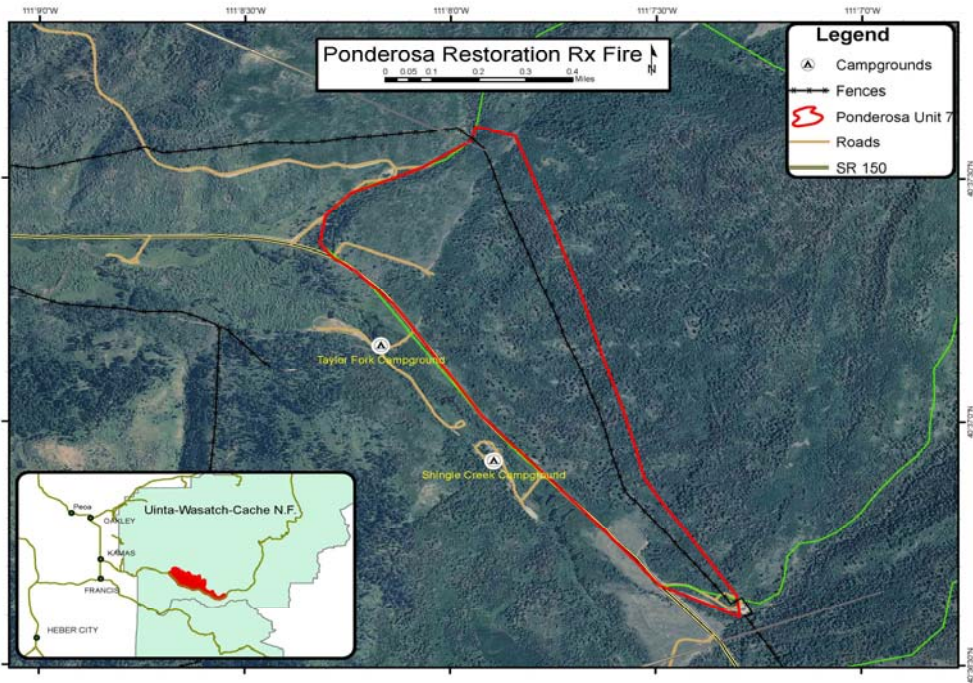
Salt Lake Utah, September 27, 2016 –Uinta-Wasatch-Cache National Forest fire personnel plan to burn unit 7 (see attached map) totaling approximately 214 acres of the Ponderosa Pine Restoration Project prescribed burn from September 28, 2016 through November 31, 2016 weather permitting.

The Ponderosa Pine Restoration Project is located in Summit County, approximately 15 miles east of Kamas, Utah. The project area encompasses 3,900 acres along the upper Provo River on the north side of the Mirror lake Highway from Co-op Creek, on the west, to Rock Creek and Soapstone campground to the east, (see attached map). This is one of the few native ponderosa pine stands on the Uinta-Wasatch-Cache National Forest.

The prescribed fire area will be closed to all uses for public safety on the day of the burn and possibly the day after.

The primary objectives of this project are to preserve the genetic diversity of ponderosa pine by reducing the thick understory of juniper, mountain brush, and lodgepole pine; reduce wildfire risk along the highway corridor; improve watershed condition; restore wildlife habitat; and improve scenic quality.

Smoke may temporarily impact visibility on the Mirror Lake Highway (SR150) and may also drift towards populated areas. Firefighters will use only hand held drip torches to treat the area and will patrol and monitor the burn until weather conditions eliminate the need to do so, or the fire is declared out.



-USDA-



FOREST SERVICE