

2015

# Pocket Guide to Transportation



U.S. Department of Transportation  
Bureau of Transportation Statistics

For additional copies of this guide or information about the Bureau of Transportation Statistics and its products and services, contact:

**Product Orders**

Internet: [http://www.bts.gov/publications/pocket\\_guide\\_to\\_transportation/2015/](http://www.bts.gov/publications/pocket_guide_to_transportation/2015/)

Mail:       Product Orders  
              Bureau of Transportation Statistics  
              ATTN: Product Orders  
              1200 New Jersey Avenue, SE, Room  
              E34-457  
              Washington, DC 20590

**Information Service**

Phone:     202-366-DATA  
Email:     answers@dot.gov

January 2015

2015

# Pocket Guide to Transportation



U.S. Department of Transportation  
**Bureau of Transportation Statistics**

# ACKNOWLEDGMENTS

## **U.S. Department of Transportation**

Anthony Foxx  
*Secretary*

Victor Mendez  
*Deputy Secretary*

Gregory Winfree  
*Assistant Secretary  
for Research and  
Technology*

## **Bureau of Transportation Statistics**

Patricia Hu  
*Director*

Rolf Schmitt  
*Deputy Director*

## **Produced under the direction of:**

Michael Sprung  
*Assistant Director for  
Transportation Analysis*

Mindy Liu  
*Project Manager*

William Moore  
*Editor*

Alpha Wingfield  
*Visual Information  
Specialist*

## **Contributors:**

Steve Beningo  
Sean Jahanmir  
Long Nguyen

# ABOUT THE *POCKET GUIDE TO TRANSPORTATION*

The *Pocket Guide to Transportation* is a compilation of statistics that provide key information and highlight major trends on the U.S. transportation system. Intended as a compact reference, it supports the Bureau of Transportation Statistics mission to create, manage, and share transportation statistical knowledge.

Many of the tables and figures within this publication are derived from *National Transportation Statistics* available at [www.bts.gov](http://www.bts.gov).

BTS welcomes comments and suggestions for improving this publication.

## CONTENTS

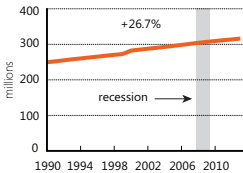
A Dynamic System .....	iv
Infrastructure .....	1
Moving People.....	6
Moving Goods.....	17
Performance .....	25
Economy .....	31
Safety.....	38
Environment .....	43
Glossary .....	52

# A DYNAMIC SYSTEM

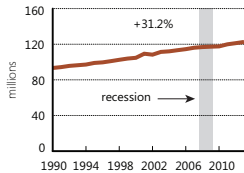
America's transportation system continues to change along with the population, economy, and employment. The following social and economic trends present a backdrop for the transportation data in this publication.

## The American Landscape: 1990–2013

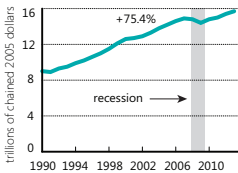
**Resident population**



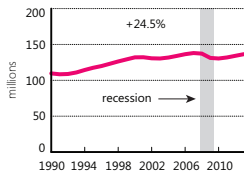
**Households**



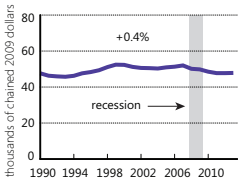
**Real GDP**



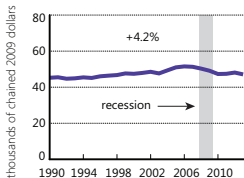
**Employment<sup>a</sup>**



**Median household income<sup>b</sup>**



**Average household expenditures<sup>b</sup>**



<sup>a</sup>Nonfarm payroll employment. <sup>b</sup>Converted to chained 2009 dollars by the Bureau of Transportation Statistics using the CPI-U-RS price index.

**Key:** GDP = gross domestic product.

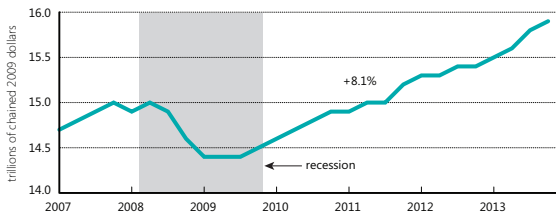
**Note:** Graphs with same color trend lines have identical scales.

**Sources: Population, Households, GDP, Income, Expenditures**—as cited in U.S. Department of Transportation, Bureau of Transportation Statistics, *National Transportation Statistics*, table A, available at [www.bts.gov](http://www.bts.gov) as of September 2014.

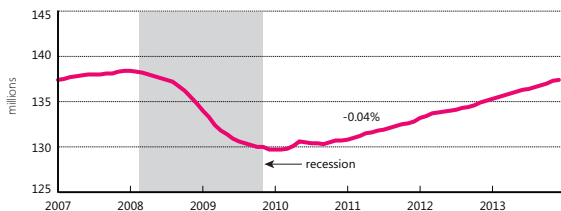
**Employment**—U.S. Department of Labor, Bureau of Labor Statistics, available at [www.bls.gov](http://www.bls.gov) as of September 2014.

## A Closer Look: Jan. 2007–Dec. 2013

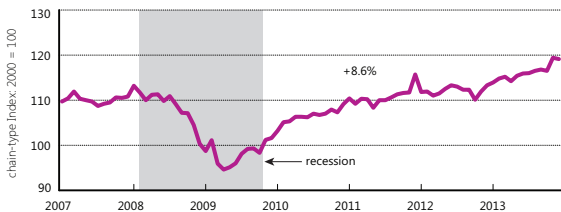
### Real GDP



### Employment<sup>a</sup>



### Transportation Services Index



<sup>a</sup>Nonfarm payroll employment.

**Key:** GDP = gross domestic product.

**Note:** Graph scales are not comparable.

**Sources:** **GDP**—U.S. Department of Commerce, Bureau of Economic Analysis, available at [www.bea.gov](http://www.bea.gov) as of September 2014. **Employment**—U.S. Department of Labor, Bureau of Labor Statistics, available at [www.bls.gov](http://www.bls.gov) as of September 2014. **TSI**—U.S. Department of Transportation, Bureau of Transportation Statistics, available at [www.bts.gov](http://www.bts.gov) as of September 2014.





# 1 INFRASTRUCTURE

The U.S. transportation system consists of a vast network of roads, bridges, airports, railroads, transit systems, ports, waterways, and pipelines. The American people rely on this interconnected system to get to work, travel, conduct business, and ship goods. The transportation system links regions and connects the Nation to the rest of the world.

## 1-1 Transportation Network Length miles

Mode	2002	2012
<b>Highway</b>		
Public roads	3,966,485	4,092,730
Public road lanes <sup>a</sup>	8,295,171	8,606,003
<b>Pipeline</b>		
Gas distribution	1,899,845	2,139,071
Gas transmission and gathering	325,741	319,856
<b>Rail</b>		
Class I freight railroad	100,125	95,264
Amtrak	23,000	21,334
<b>Transit</b>		
Commuter rail <sup>b</sup>	6,831	7,722
Heavy rail <sup>b</sup>	1,572	1,622
Light rail <sup>b</sup>	960	1,724
<b>Water</b>		
Navigable waterways <sup>c</sup>	25,000	25,000

<sup>a</sup>Measured in lane-miles. <sup>b</sup>Measured in directional route-miles. <sup>c</sup>Estimated length of domestic waterways.

**Sources: Highway, Rail, Transit, Water**— as cited in U.S. Department of Transportation, Bureau of Transportation Statistics, *National Transportation Statistics*, tables 1-1, 1-6, and 1-10, available at [www.bts.gov](http://www.bts.gov) as of September 2014. **Pipeline**—U.S. Department of Transportation, Pipeline and Hazardous Materials Administration, available at [phmsa.dot.gov/pipeline/library/data-stats](http://phmsa.dot.gov/pipeline/library/data-stats) as of September 2014.

## 1-2 Transportation Facilities number

Mode	2002	2012
<b>Air</b>		
Certificated airports <sup>a</sup>	633	542
General aviation airports	18,939	19,169
<b>Highway</b>		
Bridges	590,868	607,378
<b>Pipeline</b>		
LNG facilities	U	132
<b>Rail</b>		
Amtrak stations	515	518
<b>Transit rail</b>		
Commuter rail stations	1,150	1,244
Heavy rail stations	994	1,044
Light rail stations	640	928
<b>Water</b>		
Ports <sup>b</sup>	190	180
Cargo handling docks <sup>c</sup>	*	8,214
Lock chambers	275	239

\*2002 cargo handling docks number is omitted because it is not comparable to 2012 number due to a change in data collection methodology.

<sup>a</sup>Certificated airports serve air carrier operations with aircrafts seating more than nine passengers. <sup>b</sup>Ports handling over 250,000 short tons. <sup>c</sup>Data for 2002 and 2012 are not comparable due to changes in data coverage.

**Key:** LNG = liquified natural gas; U = Data are unavailable.

**Sources:** **Air, Highway, Rail**—as cited in U.S. Department of Transportation, Bureau of Transportation Statistics, *National Transportation Statistics*, tables 1-3, 1-7, and 1-28, available at [www.bts.gov](http://www.bts.gov) as of September 2014. **Pipeline**—U.S. Department of Transportation, Pipeline and Hazardous Materials Administration, available at [phmsa.dot.gov/pipeline/library/data-stats](http://phmsa.dot.gov/pipeline/library/data-stats) as of September 2014. **Transit**—U.S. Department of Transportation, National Transit Database, available at [www.ntdprogram.gov](http://www.ntdprogram.gov) as of September 2014. **Water**—U.S. Army Corps of Engineers, Navigation Data Center, available at [www.navigationdata-center.us](http://www.navigationdata-center.us) as of September 2014.

## 1-3 Transportation Vehicles

number

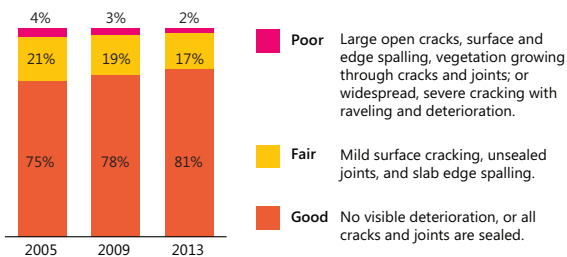
Mode	2002	2012
<b>Air</b>		
Air carrier aircraft	8,194	7,422
General aviation aircraft	211,244	209,043
<b>Highway</b>		
Light-duty vehicle <sup>a</sup>	220,931,982	233,760,558
Truck	7,927,280	10,659,380
Motorcycle	5,004,156	8,454,939
<b>Rail</b>		
Class I freight locomotive	20,506	24,707
Class I freight car	477,751	380,641
Amtrak locomotive	372	485
Amtrak car	2,896	2,090
<b>Transit rail</b>		
Commuter rail <sup>b</sup>	5,631	6,938
Heavy rail <sup>b</sup>	10,849	10,469
Light rail <sup>b</sup>	1,448	2,348
<b>Water</b>		
Nonself-propelled vessel	32,381	31,550
Self-propelled vessel	8,621	8,980
Oceangoing vessel	261	198
Recreational boat	12,854,054	12,101,936

<sup>a</sup>Includes passenger cars, light trucks, vans, and sport utility vehicles. <sup>b</sup>Includes revenue vehicles available for maximum service.

**Source:** as cited in U.S. Department of Transportation, Bureau of Transportation Statistics, *National Transportation Statistics*, table 1-11, available at [www.bts.gov](http://www.bts.gov) as of September 2014.

## 1-4 Airport Runway Pavement Condition

percent of NPIAS runways

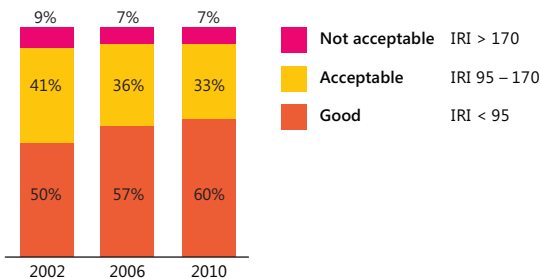


**Note:** National Plan of Integrated Airport Systems (NPIAS) airports include commercial service airports, reliever airports, and selected general aviation airports.

**Source:** as cited in U.S. Department of Transportation, Bureau of Transportation Statistics, *National Transportation Statistics*, table 1-25, available at [www.bts.gov](http://www.bts.gov) as of September 2014.

## 1-5 National Highway System Pavement Condition

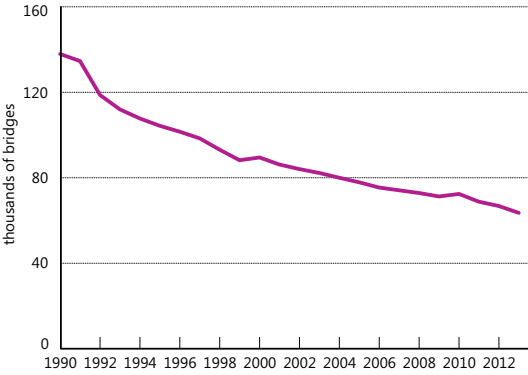
percent of vehicle-miles traveled



**Note:** Pavement condition is measured by the International Roughness Index (IRI).

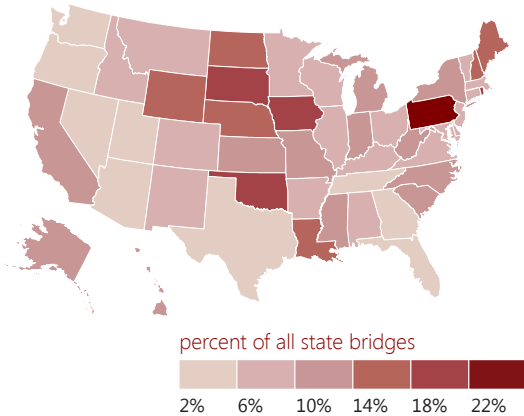
**Source:** U.S. Department of Transportation, Federal Highway Administration, *2013 Status of the Nation's Highways, Bridges, and Transit: Conditions & Performance*, available at [www.fhwa.dot.gov/policy/2013cpr](http://www.fhwa.dot.gov/policy/2013cpr) as of September 2014.

## 1-6 Structurally Deficient Bridges: 1990–2013



**Source:** U.S. Department of Transportation, Federal Highway Administration, National Bridge Inventory, available at [www.fhwa.dot.gov/bridge/nbi.cfm](http://www.fhwa.dot.gov/bridge/nbi.cfm) as of September 2014.

## 1-7 Structurally Deficient Bridges by State: 2013



**Source:** U.S. Department of Transportation, Federal Highway Administration, National Bridge Inventory, available at [www.fhwa.dot.gov/bridge/nbi.cfm](http://www.fhwa.dot.gov/bridge/nbi.cfm) as of September 2014.

## 2 MOVING PEOPLE

The U.S. transportation system makes personal mobility possible. Every day people use the transportation system to get to and from work, school, and shopping and for recreation, social, and personal purposes.

### 2-1 Vehicle-Miles Traveled millions

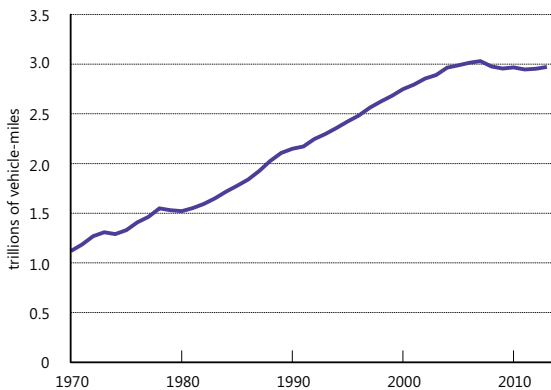
Mode	2002	2012
<b>Air</b>		
U.S. air carrier, domestic <sup>a</sup>	5,613	5,956
<b>Highway</b>		
Light-duty vehicle <sup>b,c</sup>	*	2,664,445
Motorcycle <sup>b</sup>	*	21,298
Truck <sup>b</sup>	*	268,318
Bus <sup>b</sup>	*	14,755
<b>Passenger rail</b>		
Amtrak <sup>d</sup>	379	319
Commuter rail <sup>d</sup>	284	318
Heavy rail <sup>d</sup>	621	638
Light rail <sup>d</sup>	61	91

\*2002 highway data are omitted because they are not comparable to 2012 data due to a change in vehicle occupancy rates derived from National Household Travel Surveys.

<sup>a</sup>Measured in revenue aircraft-miles. <sup>b</sup>Data for 2002 and 2012 may not be comparable due to changes in methodology. <sup>c</sup>Includes passenger cars, light trucks, vans, and sport utility vehicles. <sup>d</sup>Measured in car-miles.

**Source:** as cited in U.S. Department of Transportation, Bureau of Transportation Statistics, *National Transportation Statistics*, table 1-35, available at [www.bts.gov](http://www.bts.gov) as of September 2014.

## 2-2 Highway Travel: 1970–2013



**Note:** Data for 2007 and later years may not be comparable to previous years due to changes in methodology.

**Source:** U.S. Department of Transportation, Federal Highway Administration, *Traffic Volume Trends*, available at [www.fhwa.dot.gov](http://www.fhwa.dot.gov) as of September 2014.

## 2-3 Passenger-Miles Traveled

millions

Mode	2002	2012
<b>Air</b>		
U.S. air carrier, domestic	483,525	580,501
<b>Highway</b>		
Light-duty vehicle <sup>a</sup>	*	3,669,821
Motorcycle	*	22,940
Truck	*	268,318
Bus	*	312,797
<b>Passenger rail</b>		
Amtrak <sup>b</sup>	5,468	6,804
Commuter rail	9,500	11,121
Heavy rail	13,663	17,516
Light rail	1,432	2,316

\*2002 highway data are omitted because they are not comparable to 2012 data due to a change in vehicle occupancy rates derived from National Household Travel Surveys.

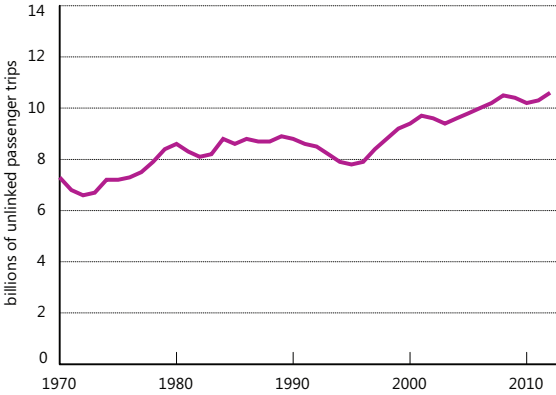
<sup>a</sup>Includes passenger cars, light trucks, vans, and sport utility vehicles.

<sup>b</sup>Measured in revenue passenger-miles.

**Source:** as cited in U.S. Department of Transportation, Bureau of Transportation Statistics, *National Transportation Statistics*, table 1-40, available at [www.bts.gov](http://www.bts.gov) as of September 2014.



## 2-4 Transit Ridership: 1970–2012



**Note:** Includes bus, commuter rail, demand response, heavy rail, light rail, trolley bus, ferry boat, aerial tramway, automated guideway, cable car, inclined plane, monorail, and other.

**Source:** American Public Transportation Association, *Public Transportation Fact Book*, available at [www.apta.com](http://www.apta.com) as of September 2014.

## 2-5 Daily Passenger Travel

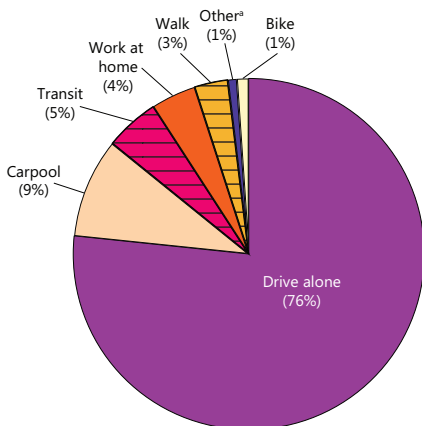
	1995	2001	2009
<b>Travel per person</b>			
Daily person trips	4.3	4.1	3.8
Daily person-miles of travel	38.7	40.3	36.1
<b>Travel per driver</b>			
Daily vehicle trips	3.6	3.4	3.0
Daily vehicle-miles of travel	32.1	32.7	29.0
<b>Average commute</b>			
Length in miles	11.6	12.1	11.8
Travel time in minutes	20.7	23.3	23.9
<b>Percent of trips by mode</b>			
Private vehicle	89.3	86.4	83.4
Bus <sup>a</sup>	3.0	2.8	3.3
Rail <sup>b</sup>	0.6	0.6	0.6
Walk	5.5	8.7	10.4
Bike	0.9	0.8	1.0
Air	0.1	0.1	0.1
Other <sup>c</sup>	0.5	0.6	1.1

<sup>a</sup>Includes local transit bus, commuter bus, school bus, charter/tour bus, city-to-city bus. <sup>b</sup>Includes subway/elevated rail, street car/trolley, and Amtrak/inter-city train. <sup>c</sup>Includes ferry, hotel/airport shuttle, light electric vehicle, limousine, passenger line/ferry, sailboat/motorboat/yacht, ship/cruise, special transit, taxicab, other, and unknown.

**Note:** Percents may not add to 100 due to rounding.

**Source:** U.S. Department of Transportation, Federal Highway Administration, *2009 National Household Travel Survey*, available at [nhts.ornl.gov](http://nhts.ornl.gov) as of September 2014.

## 2-6 Commute Mode Share: 2013

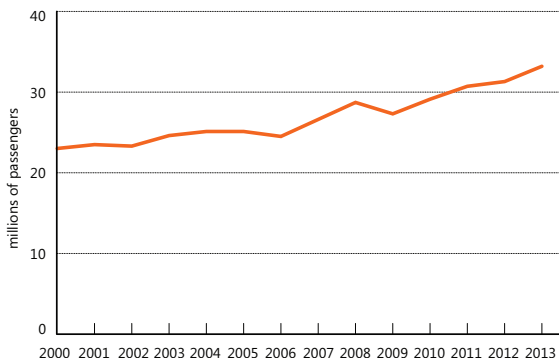


<sup>a</sup> Includes motorcycle, taxi, and other means.

**Notes:** Percents do not add to 100 due to rounding. The *American Community Survey* asks for the mode usually used by the respondent to get to work. For more than one mode of transportation, respondents select the mode used for most of the distance traveled.

**Source:** U.S. Department of Commerce, U.S. Census Bureau, *American Community Survey*, 1-Year Estimates, available at [www.census.gov/acs](http://www.census.gov/acs) as of September 2014.

## 2-7 Amtrak Ridership: FY2000–FY2013



**Source:** U.S. Department of Transportation, Federal Railroad Administration, available at [safetydata.fra.dot.gov/OfficeofSafety](http://safetydata.fra.dot.gov/OfficeofSafety) as of September 2014.

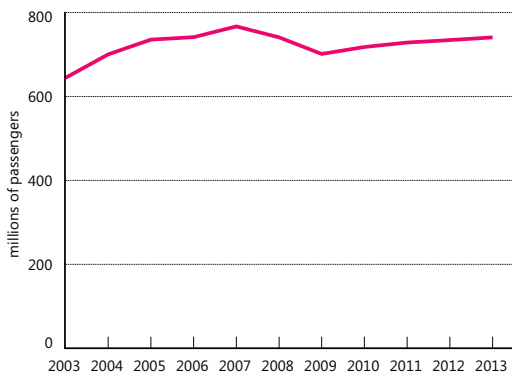
## 2-8 Top 10 Amtrak Stations: FY2013 by passengers

Rank	Station	'12-'13 change	Millions of passengers
1	New York Penn Station, NY	▲ 0.7%	9.6
2	Washington, DC	▲ 0.4%	5.0
3	Philadelphia 30th St., PA	▲ 1.4%	4.1
4	Chicago, IL	▲ 1.1%	3.5
5	Los Angeles, CA	▼ -0.8%	1.6
6	Boston South Station, MA	▼ -0.9%	1.4
7	Sacramento, CA	▼ -4.6%	1.1
8	Baltimore, MD	▲ 3.6%	1.1
9	Albany-Rensselaer, NY	▼ -0.6%	0.8
10	New Haven, CT	▼ -1.3%	0.7

**Note:** Includes passenger boardings and alightings.

**Source:** U.S. Department of Transportation, Bureau of Transportation Statistics, *State Transportation Statistics*, table 4-5, available at [www.bts.gov](http://www.bts.gov) as of September 2014.

## 2-9 U.S. Air Carrier Passenger Traffic: 2003-2013



**Note:** Includes passenger enplanements on scheduled services only.

**Source:** U.S. Department of Transportation, Bureau of Transportation Statistics, Office of Airline Information, T-100 Market data, available at [transtats.bts.gov](http://transtats.bts.gov) as of September 2014.

## 2-10 Top 10 U.S. Airports: 2013 by enplaned passengers

Rank	Station	'12-'13 change	Millions of passengers
1	Atlanta, GA	▼ -1.0%	45.3
2	Los Angeles, CA	▲ 3.2%	32.3
3	Chicago O'Hare, IL	▲ 0.3%	32.2
4	Dallas/Fort Worth, TX	▲ 3.6%	29.0
5	Denver, CO	▼ -1.2%	25.5
6	New York JFK, NY	▲ 2.2%	25.0
7	San Francisco, CA	▲ 1.7%	21.7
8	Charlotte, NC	▲ 6.6%	21.3
9	Las Vegas, NV	▲ 0.2%	19.8
10	Phoenix, AZ	▼ -0.2%	19.5

**Note:** Includes passenger enplanements on U.S. carrier scheduled domestic and international service and foreign carrier scheduled international service to and from the United States.

**Source:** U.S. Department of Transportation, Bureau of Transportation Statistics, Office of Airline Information, T-100 Market data, available at [transtats.bts.gov](http://transtats.bts.gov) as of March 2014.

## 2-11 Top 10 World Airports: 2013

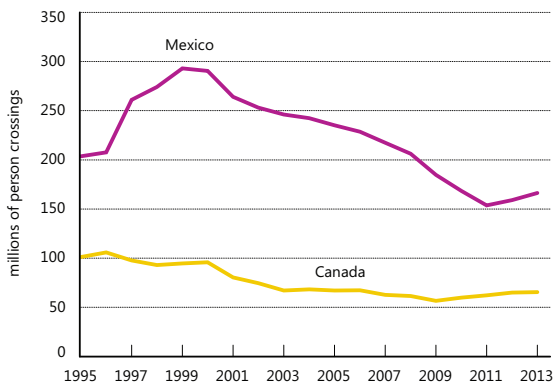
by enplaned, deplaned, and in-transit passengers

Rank	Airport	'12-'13 change	Millions of passengers
1	Atlanta, USA	▼ -1.1%	94.4
2	Beijing, China	▲ 2.2%	83.7
3	London, United Kingdom	▲ 3.3%	72.4
4	Tokyo, Japan	▲ 3.2%	68.9
5	Chicago, USA	▲ 0.2%	66.8
6	Los Angeles, USA	▲ 4.7%	66.7
7	Dubai, United Arab Emirates	▲ 15.2%	66.4
8	Paris, France	▲ 0.7%	62.1
9	Dallas/Fort Worth, USA	▲ 3.2%	60.5
10	Jakarta, Indonesia	▲ 4.1%	60.1

**Note:** Preliminary data for passengers enplaned, deplaned, and passengers in transit.

**Source:** Airports Council International, available at [www.aci.aero](http://www.aci.aero) as of September 2014.

## 2-12 Incoming Land Border Person Crossings: 1995-2013



**Note:** Excludes drivers and passengers in commercial trucks.

**Source:** U.S. Department of Transportation, Bureau of Transportation Statistics, Border Crossing/Entry Data, available at [transborder.bts.gov](http://transborder.bts.gov) as of September 2014.

## 2-13 Top Land Ports of Entry: 2013

by incoming person crossings

### U.S. - Mexico ports of entry

Rank	Port	'12-'13 change	Millions of person crossings
1	San Ysidro, CA	▼ -1.8%	28.1
2	El Paso, TX	▲ 6.7%	23.9
3	Otay Mesa, CA	▲ 13.3%	14.4
4	Laredo, TX	▲ 9.3%	14.2
5	Hidalgo, TX	▲ 1.2%	12.0

### U.S. - Canada ports of entry

Rank	Port	'12-'13 change	Millions of person crossings
1	Buffalo-Niagara Falls, NY	▼ -4.2%	13.5
2	Blaine, WA	▲ 6.5%	10.1
3	Detroit, MI	▲ 0.5%	7.7
4	Port Huron, MI	▲ 1.7%	4.1
5	Champlain-Rouses Pt., NY	▲ 1.0%	3.1

**Note:** Excludes drivers and passengers in commercial trucks.

**Source:** U.S. Department of Transportation, Bureau of Transportation Statistics, Border Crossing/Entry Data, available at [transborder.bts.gov](http://transborder.bts.gov) as of September 2014.



## 3 MOVING GOODS

The freight transportation network links natural resources, manufacturing facilities, labor markets, and customers across the Nation and with international trading partners.

### 3-1 Freight Shipments Within the U.S. by Mode

Value of shipments (billions of chained 2007 dollars)

Mode	2002	2007	2012
Truck	11,165	12,193	12,653
Rail	468	574	623
Water	113	212	224
Air <sup>a</sup>	372	357	390
Pipeline	309	787	839
Multiple modes	1,367	1,925	1,997
Other <sup>b</sup>	403	603	625
<b>Total</b>	<b>14,196</b>	<b>16,651</b>	<b>17,352</b>

Weight of shipments (millions of tons)

Mode	2002	2007	2012
Truck	11,943	13,336	13,812
Rail	1,978	2,024	2,176
Water	680	655	715
Air <sup>a</sup>	5	5	6
Pipeline	1,574	1,659	1,716
Multiple modes	320	583	635
Other <sup>b</sup>	716	617	602
<b>Total</b>	<b>17,215</b>	<b>18,879</b>	<b>19,662</b>

Ton miles of shipments (billions of ton miles)

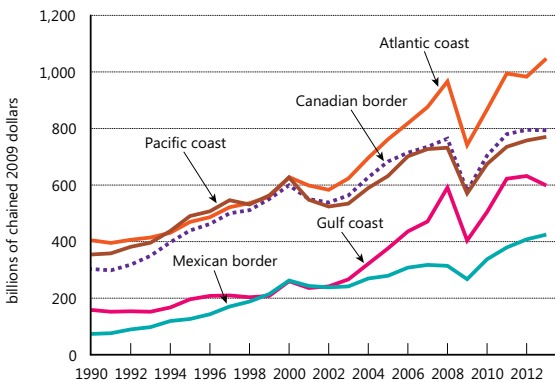
Year	2002	2007	2012
Truck	2,281	2,348	2,505
Rail	1,368	1,522	1,643
Water	421	450	512
Air <sup>a</sup>	6	9	10
Pipeline	881	855	936
Multiple modes	480	469	521
Other <sup>b</sup>	102	86	97
<b>Total</b>	<b>5,539</b>	<b>5,740</b>	<b>6,225</b>

<sup>a</sup>Includes air and truck-air. <sup>b</sup>Includes other, unknown, and no domestic mode.

**Notes:** Details may not add to totals due to rounding. Includes domestic trade and the domestic portion of imports and exports.

**Source:** U.S. Department of Transportation, Federal Highway Administration, Freight Analysis Framework, Version 3.5, available at [faf.oml.gov](http://faf.oml.gov) as of September 2014.

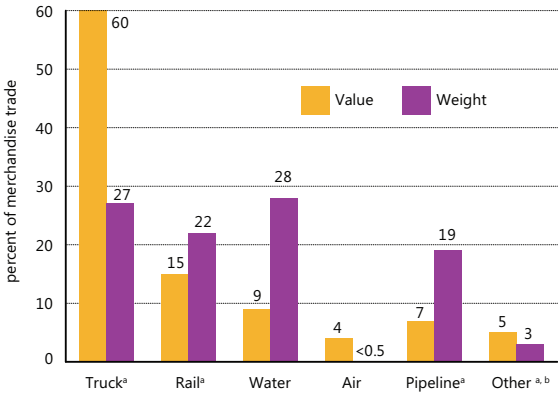
### 3-2 U.S. Trade by Coasts and Borders: 1990–2013



**Note:** Includes merchandise trade only.

**Sources:** **Value**—U.S. Department of Commerce, U.S. Census Bureau, Foreign Trade Division, available at [www.census.gov](http://www.census.gov) as of June 2014. **Implicit GDP Deflator**—U.S. Department of Commerce, Bureau of Economic Analysis, available at [www.bea.gov](http://www.bea.gov) as of June 2014.

### 3-3 U.S.-NAFTA Merchandise Trade by Mode: 2013

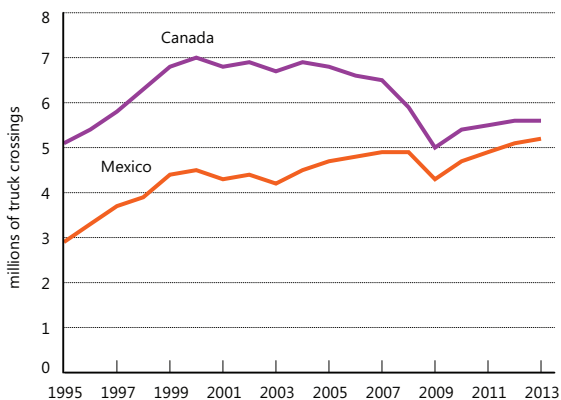


<sup>a</sup>Export weights for land modes are estimated by the Bureau of Transportation Statistics using value-to-weight ratios derived from import data. <sup>b</sup>Includes mail, other, unknown, and shipments through Foreign Trade Zones.

**Notes:** Percents do not add to 100 due to rounding. North American Free Trade Agreement (NAFTA) refers to U.S. trade with Canada and Mexico.

**Source:** U.S. Department of Transportation, Bureau of Transportation Statistics, special tabulation and North American Transborder Freight Data, available at [transborder.bts.gov](http://transborder.bts.gov) as of September 2014.

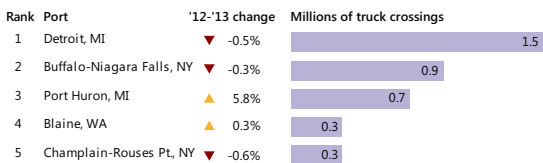
### 3-4 Incoming Truck Border Crossings: 1995–2013



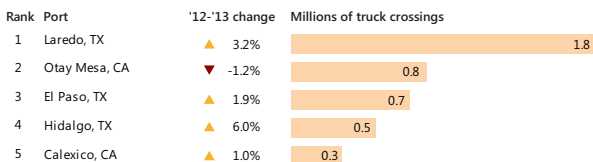
**Source:** U.S. Department of Transportation, Bureau of Transportation Statistics, Border Crossing/Entry Data, available at [transborder.bts.gov](http://transborder.bts.gov) as of September 2014.

## 3-5 Top 5 Truck Ports of Entry: 2013 by incoming truck crossings

### U.S. - Canada ports of entry



### U.S. - Mexico ports of entry



**Source:** U.S. Department of Transportation, Bureau of Transportation Statistics, Border Crossing/Entry Data, available at [transborder.bts.gov](http://transborder.bts.gov) as of September 2014.

## 3-6 Top 10 U.S. Water Ports: 2012 by short tons

Rank	Port	'11-'12 change	Millions of short tons
1	South Louisiana	▲ 2.3%	252.1
2	Houston, TX	▲ 0.2%	238.2
3	New York/New Jersey	▼ -5.2%	132.0
4	New Orleans, LA	▲ 2.8%	79.3
5	Beaumont, TX	▲ 6.6%	78.5
6	Long Beach, CA	▼ -3.6%	77.4
7	Corpus Christi, TX	▼ -2.2%	69.0
8	Los Angeles, CA	▼ -4.9%	61.8
9	Baton Rouge, LA	▲ 3.7%	60.0
10	Plaquemines, LA	▲ 7.7%	58.3

## by TEUs

Rank	Port	'11-'12 change	Millions of TEUs
1	Los Angeles, CA	▼ -3.9%	5.7
2	Long Beach, CA	▲ 0.6%	4.7
3	New York/New Jersey	▼ -0.5%	4.4
4	Savannah, GA	▲ 0.9%	2.3
5	Norfolk, VA	▲ 13.1%	1.7
6	Oakland, CA	▼ -0.2%	1.7
7	Houston, TX	▲ 4.3%	1.5
8	Seattle, WA	▼ -8.8%	1.4
9	Tacoma, WA	▲ 20.0%	1.4
10	Charleston, SC	▲ 7.8%	1.2

**Key:** TEU = twenty-foot equivalent unit.

**Note:** Includes domestic and foreign waterborne trade. Excludes foreign empty TEUs.

**Source:** U.S. Army Corps of Engineers, Waterborne Commerce Statistics Center, available at [www.navigationdatacenter.us](http://www.navigationdatacenter.us) as of September 2014.











### 3-7 Top 10 World Container Ports: 2012 by full and empty TEUs




Rank	Port	'11-'12 change	Millions of TEUs
1	Shanghai	▲ 2.5%	32.5
2	Singapore	▲ 5.7%	31.6
3	Hong Kong	▼ -5.2%	23.1
4	Shenzhen	▲ 1.7%	23.0
5	Busan	▲ 5.3%	17.0
6	Ningbo	▲ 14.0%	16.8
7	Quindao	▲ 12.2%	14.6
8	Guangzhou	▲ 1.8%	14.5
9	Dubai	▲ 5.2%	13.3
10	Tianjin	▲ 6.1%	12.3
16	Los Angeles	▲ 1.7%	8.1
20	Long Beach	▼ -0.3%	6.0
24	New York/ New Jersey	▲ 0.5%	5.5

**Key:** TEU = twenty-foot equivalent unit.

**Source:** American Association of Port Authorities, World Port Rankings, available at [www.aapa-ports.org](http://www.aapa-ports.org) as of September 2014.

### 3-8 Top 10 International Trade Gateways: 2013 by value of shipments

Rank	Port		'12-'13 change	Billions of dollars
1	Los Angeles, CA		▼ -1.9%	212.9
2	New York/New Jersey		▼ -3.6%	201.9
3	New York JFK Airport, NY		▲ 3.9%	189.7
4	Long Beach, CA		▲ 8.1%	180.9
5	Laredo, TX		▲ 6.9%	174.6
6	Houston, TX		▼ -5.1%	167.5
7	Detroit, MI		▼ -6.5%	123.4
8	Chicago, IL		▲ 3.6%	122.2
9	Los Angeles Airport, CA		▲ 2.7%	87.6
10	Port Huron, MI		▲ 0.4%	81.8

**Key:**  = airport,  = land port,  = water port

**Notes:** Air gateways include a low level (generally less than 3% of the total value) of freight shipped through small user-fee airports located in the same area as the gateways listed. Air gateways not identified by airport name (e.g., Chicago, IL) include major airport(s) in the area and small regional airports.

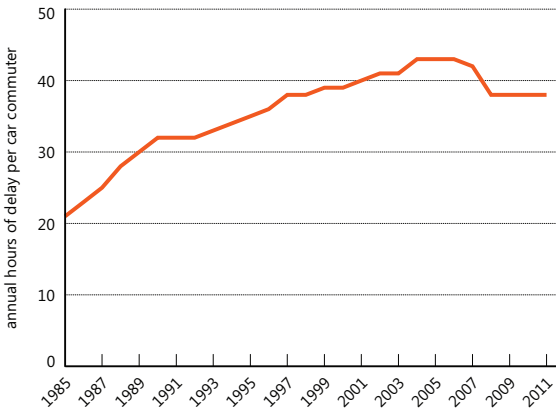
**Source:** As cited in U.S. Department of Transportation, Bureau of Transportation Statistics, *National Transportation Statistics*, table 1-51, available at [www.bts.gov](http://www.bts.gov) as of December 2014.



## 4 PERFORMANCE

The physical capacity of the U.S. transportation system has not kept pace with growth in travel and commerce. The resulting congestion and delays have significant impacts on passengers and freight shippers.

### 4-1 Road Congestion: 1985–2011



**Source:** Texas A&M Transportation Institute, *2012 Urban Mobility Report*, available at [mobility.tamu.edu](http://mobility.tamu.edu) as of October 2013.

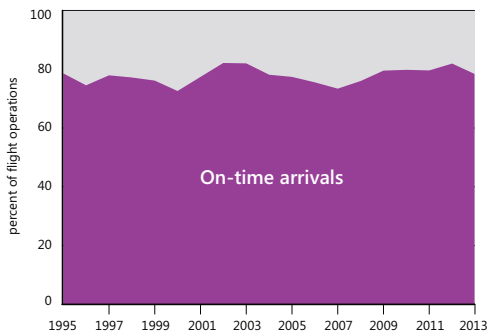
## 4-2 Top 10 Urban Congested Areas: 2011 by hours of delay per car commuter

Rank	Urban area	Annual hours of delay per car commuter
1	Washington, DC-VA-MD	67
2	Los Angeles, CA	61
2	San Francisco, CA	61
4	New York, NY-NJ	59
5	Boston, MA-NH-RI	53
6	Houston, TX	52
7	Atlanta, GA	51
7	Chicago, IL-IN	51
9	Philadelphia, PA-NJ-DE-MD	48
9	Seattle, WA	48
	Average of 498 urban areas	38

**Note:** The 2012 *Urban Mobility Report* includes 498 urban areas.

**Source:** Texas A&M Transportation Institute, 2012 *Urban Mobility Report*, available at [mobility.tamu.edu](http://mobility.tamu.edu) as of October 2013.

### 4-3 U.S. Airport On-Time Performance: 1995–2013

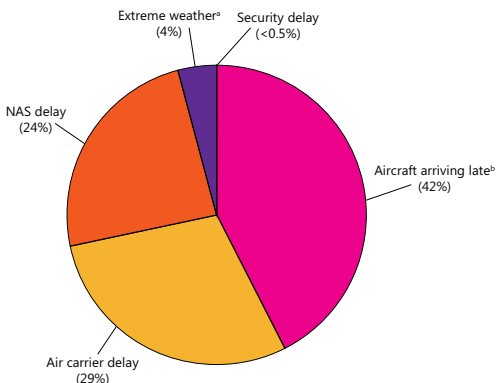


**Note:** Flights arriving at the gate within 15 minutes of scheduled arrival time are on time.

**Source:** U.S. Department of Transportation, Bureau of Transportation Statistics, Office of Airline Information, available at [www.bts.gov](http://www.bts.gov) as of September 2014.

### 4-4 U.S. Airport Delays by Cause: 2013

percent of delayed time



<sup>a</sup>Includes weather events that prevent flying. Other weather delays that slow operations are included under other categories. <sup>b</sup>Delay resulting from a previous flight with the same aircraft arriving late.

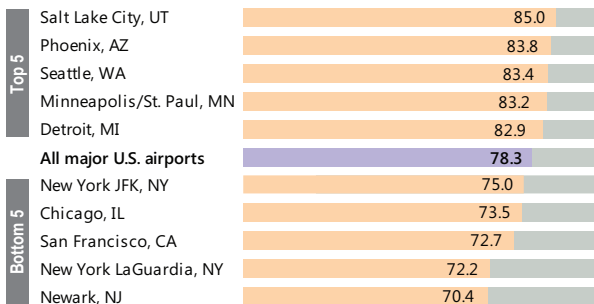
**Key:** NAS = Delays attributable to the national aviation system (NAS) that refer to a broad set of conditions, such as non-extreme weather, airport operations, heavy traffic volume, and air traffic control.

**Note:** Percents do not add to 100 due to rounding.

**Source:** U.S. Department of Transportation, Bureau of Transportation Statistics, Office of Airline Information, available at [www.bts.gov](http://www.bts.gov) as of September 2014.

## 4-5 U.S. Major Airport Performance Rankings: 2013

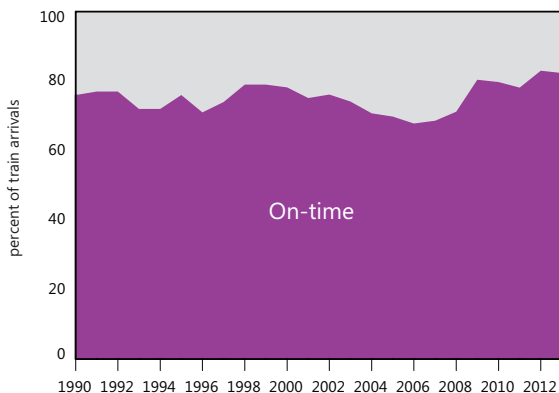
by percent of on-time arrivals



**Note:** Flights arriving at the gate within 15 minutes of scheduled arrival time are on time.

**Source:** U.S. Department of Transportation, Bureau of Transportation Statistics, Office of Airline Information, available at [www.bts.gov](http://www.bts.gov) as of September 2014.

## 4-6 Amtrak On-time Performance: FY1990–FY2013



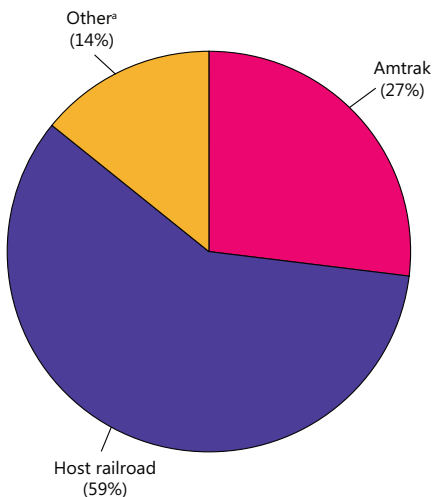
**Note:** On-time performance is a percentage measure of train performance. A train is considered on-time if it arrives at the final destination, or end-point, within an allowed number of minutes, or tolerance, of its scheduled arrival time. Trains are allowed a certain tolerance at the end-point based on the number of miles traveled:

Trip length	Train arrives at end-point within
0-250 miles	10 minutes
251-350 miles	15 minutes
351-450 miles	20 minutes
451-550 miles	25 minutes
>551 miles	30 minutes

**Source:** as cited in U.S. Department of Transportation, Bureau of Transportation Statistics, *National Transportation Statistics*, table 1-73, available at [www.bts.gov](http://www.bts.gov) as of September 2014.

## 4-7 Amtrak Delays by Cause: FY2012

percent of delayed time



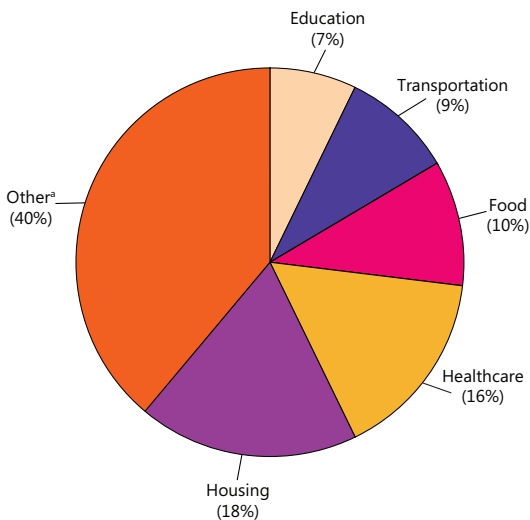
<sup>a</sup>Delays not attributable to Amtrak or other host railroads, such as customs and immigration, law enforcement action, weather, or waiting for scheduled departure time.

**Source:** as cited in U.S. Department of Transportation, Bureau of Transportation Statistics, *National Transportation Statistics*, table 1-73, available at [www.bts.gov](http://www.bts.gov) as of October 2013.

## 5 ECONOMY

**T**ransportation is a major sector of the U.S. economy. The transportation system moves people and goods, employs millions of workers, generates revenue, and consumes resources and services provided by other sectors.

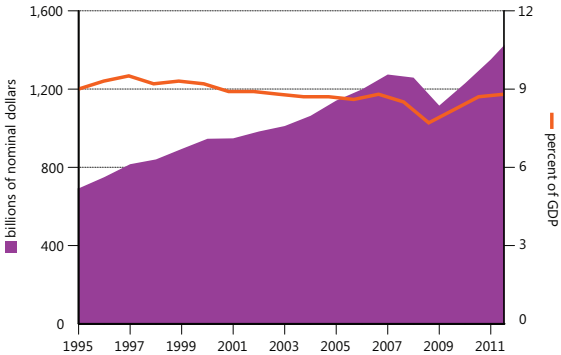
### 5-1 U.S. GDP by Spending Category: 2012 percent of GDP



<sup>a</sup>Includes all other categories (e.g. entertainment, personal care products and services, and payments to pension plans).

**Source:** as cited in U.S. Department of Transportation, Bureau of Transportation Statistics, *National Transportation Statistics*, table 3-9, available at [www.bts.gov](http://www.bts.gov) as of October 2014.

## 5-2 U.S. Transportation Spending: 1995–2012



**Source:** as cited in U.S. Department of Transportation, Bureau of Transportation Statistics, *National Transportation Statistics*, table 3-9, available at [www.bts.gov](http://www.bts.gov) as of October 2014.



## 5-3 Transportation-Related Final Demand

billions of chained 2009 dollars

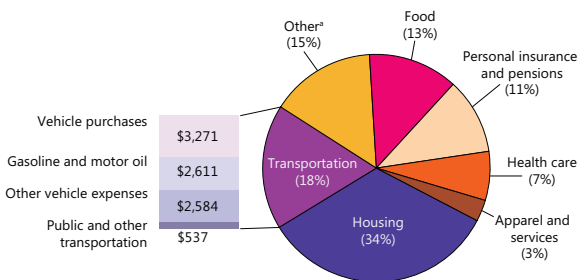
Category	2002	2012
<b>Personal consumption of transportation</b>	<b>971</b>	<b>909</b>
Motor vehicles and parts	383	358
Motor vehicle fuels, lubricants, and fluids	267	251
Transportation services	321	300
<b>Gross private domestic investment</b>	<b>175</b>	<b>228</b>
Transportation structures	8	10
Transportation equipment	167	218
<b>Government transportation-related purchases</b>	<b>305</b>	<b>280</b>
Federal purchases	31	39
State and local purchases	261	223
Defense-related purchases	13	18
<b>Exports ( + )</b>	<b>207</b>	<b>296</b>
<b>Imports ( - )</b>	<b>318</b>	<b>390</b>
<b>Total transportation-related final demand</b>	<b>1,341</b>	<b>1,323</b>
<b>U.S. GDP</b>	<b>12,909</b>	<b>15,369</b>

**Notes:** Data may not add to totals due to rounding. Transportation-related final demand measures the size of transportation functions in relation to the GDP. It includes the transportation portion of the four components of the GDP: personal consumption, gross private domestic investment, government purchases, and net exports of goods and services.

**Source:** as cited in U.S. Department of Transportation, Bureau of Transportation Statistics, *National Transportation Statistics*, table 3-4, available at [www.bts.gov](http://www.bts.gov) as of October 2014.

## 5-4 Household Expenses by Category: 2013

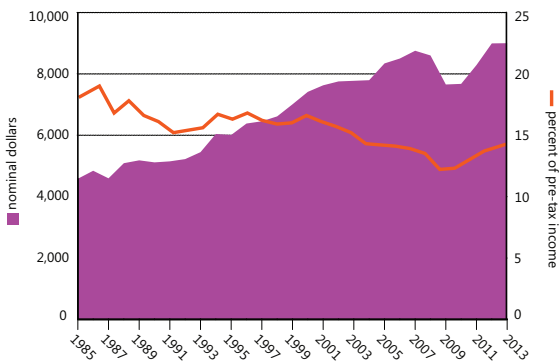
percent of average annual household expenses



<sup>a</sup> Includes alcoholic beverages, cash contributions, education, entertainment, personal care products and services, reading, tobacco products and smoking supplies, and other items.

**Source:** U.S. Department of Labor, Bureau of Labor Statistics, *Consumer Expenditure Survey*, available at [www.bls.gov/cex](http://www.bls.gov/cex) as of September 2014.

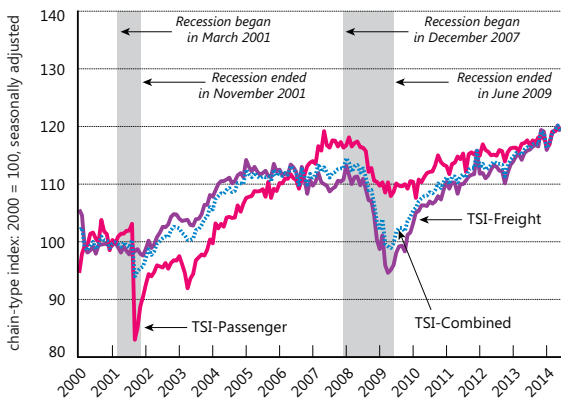
## 5-5 Household Transportation Expenses: 1985–2013



**Source:** U.S. Department of Labor, Bureau of Labor Statistics, *Consumer Expenditure Survey*, available at [www.bls.gov/cex](http://www.bls.gov/cex) as of September 2014.

## 5-6 Transportation Services Index: Jan. 2000–June 2014

chain-type Index: 2000 = 100, seasonally adjusted



**Source:** U.S. Department of Transportation, Bureau of Transportation Statistics, available at [www.bts.gov](http://www.bts.gov) as of September 2014.

## 5-7 Employment in Transportation-Related Industries

thousands

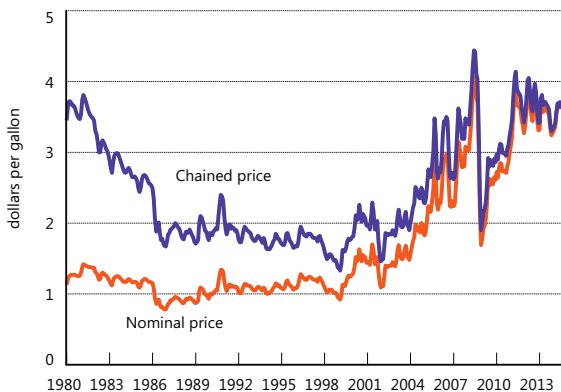
Category	2002	2012
<b>For-hire transportation and warehousing</b>	<b>4,224</b>	<b>4,415</b>
Air	564	458
Rail	218	230
Water	53	63
Truck	1,339	1,351
Transit and ground passenger	381	448
Pipeline	42	44
Scenic and sightseeing	26	27
Support activities	525	578
Couriers and messengers	561	533
Warehousing and storage	517	682
<b>Transportation-related manufacturing<sup>a</sup></b>	<b>2,200</b>	<b>1,757</b>
<b>Other transportation-related industries</b>	<b>5,241</b>	<b>4,893</b>
Postal service	842	611
Government employment <sup>b</sup>	<u>932</u>	<u>870</u>
<b>Total transportation-related labor force</b>	<b>13,438</b>	<b>12,547</b>
<b>U.S. labor force</b>	<b>130,450</b>	<b>133,739</b>

<sup>a</sup>Includes transportation equipment; petroleum products; tires; rubber; plastics; search, detection, navigation, guidance, aeronautical, and nautical systems; and instrument manufacturing. <sup>b</sup>Fiscal year data for federal, state, and local personnel.

**Notes:** Annual averages based on NAICS data. Details may not add to totals due to rounding.

**Source:** as cited in U.S. Department of Transportation, Bureau of Transportation Statistics, *National Transportation Statistics*, table 3-23, available at [www.bts.gov](http://www.bts.gov) as of September 2014.

## 5-8 Motor Vehicle Gas Prices: Jan. 1980–July 2014



**Notes:** Prices are average monthly prices of regular grade motor vehicle gasoline. Chained prices are in August 2014 dollars.

**Source:** U.S. Department of Energy, Energy Information Administration, *Short-Term Energy Outlook*, available at [www.eia.doe.gov](http://www.eia.doe.gov) as of September 2014.

# 6 SAFETY

Transportation safety is the top priority of the U.S. Department of Transportation. Although progress has been made in reducing fatalities, over 30 percent of deaths due to unintentional injury involve transportation.

## 6-1 Transportation Fatalities by Mode

Mode	2002	2012
<b>Air</b>	<b>616</b>	<b>447</b>
U.S. air carrier	0	0
Commuter carrier	0	0
On-demand air taxi	35	15
General aviation	581	432
<b>Highway</b>	<b>43,005</b>	<b>33,561</b>
Passenger car occupants	20,569	12,271
Motorcyclists	3,270	4,957
Light-truck occupants	12,274	9,396
Heavy-truck occupants	689	697
Bus occupants	45	39
Pedestrians	4,851	4,743
Pedalcyclists	665	726
Other	642	732
<b>Pipeline</b>	<b>12</b>	<b>12</b>
<b>Rail<sup>a</sup></b>	<b>680</b>	<b>557</b>
Trespassers	540	425
Highway-railgrade crossings	86	98
Employees, contractors, and passengers	54	34
<b>Transit<sup>b</sup></b>	<b>86</b>	<b>82</b>
<b>Water</b>	<b>863</b>	<b>714</b>
Commercial vessel	113	63
Recreational boating	750	651
<b>Total</b>	<b>45,262</b>	<b>35,373</b>
<b>Other counts<sup>c</sup></b>		
Highway-rail grade crossings	357	232
Commuter rail	116	80
Heavy rail	73	52
Light rail	13	29
Transit bus	78	70

<sup>a</sup>Excludes fatalities involving motor vehicles at public highway-rail grade crossings, which are assumed to be counted under Highway categories. <sup>b</sup>Includes automated guideway, heavy-rail, and light-rail fatalities. Other transit fatalities are assumed to be counted under Highway or Rail categories. <sup>c</sup>Other counts are included in modal categories above.

**Source:** as cited in U.S. Department of Transportation, Bureau of Transportation Statistics, *National Transportation Statistics*, table 2-1, available at [www.bts.gov](http://www.bts.gov) as of October 2014.

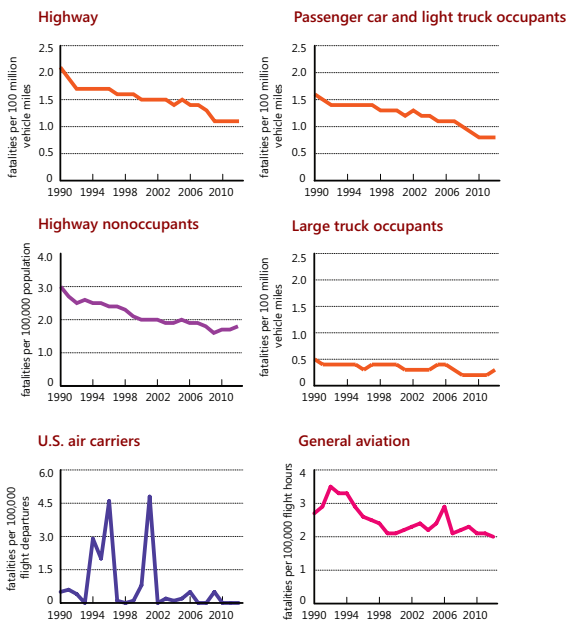
## 6-2 Transportation Injuries by Mode

Mode	2002	2012
<b>Air</b>	<b>337</b>	<b>276</b>
U.S. air carrier	24	18
Commuter carrier	0	0
On-demand air taxi	16	10
General aviation	297	248
<b>Highway</b>	<b>2,925,758</b>	<b>2,362,000</b>
Passenger car occupants	1,804,788	1,328,000
Motorcyclists	64,713	93,000
Light-truck occupants	879,338	762,000
Heavy-truck occupants	26,242	25,000
Bus occupants	18,819	12,000
Pedestrians	70,664	76,000
Pedalcyclists	48,011	49,000
Other	13,182	16,000
<b>Pipeline</b>	<b>49</b>	<b>58</b>
<b>Rail<sup>a</sup></b>	<b>10,296</b>	<b>7,622</b>
Trespassers	395	410
Highway-rail grade crossing	192	208
Employees, contractors, and passengers	9,709	7,004
<b>Transit<sup>b</sup></b>	<b>5,391</b>	<b>7,584</b>
<b>Water</b>	<b>4,856</b>	<b>3,688</b>
Commercial vessel	794	688
Recreational boating	4,062	3,000
<b>Total</b>	<b>2,946,687</b>	<b>2,381,228</b>
<b>Other counts<sup>c</sup></b>		
Highway-rail grade crossings	999	971
Commuter rail	1,483	1,891
Heavy rail	4,806	6,674
Light rail	557	750
Transit bus	11,995	11,328

<sup>a</sup>Excludes injuries involving motor vehicles at public highway-rail grade crossings, which are assumed to be counted under Highway categories. <sup>b</sup>Includes automated guideway, heavy-rail, and light-rail injuries. Other transit injuries are assumed to be counted under Highway or Rail categories. <sup>c</sup>Other counts are included in modal categories above.

**Source:** as cited in U.S. Department of Transportation, Bureau of Transportation Statistics, *National Transportation Statistics*, table 2-2, available at [www.bts.gov](http://www.bts.gov) as of October 2014.

## 6-3 Fatality Rates by Mode: 1990–2012

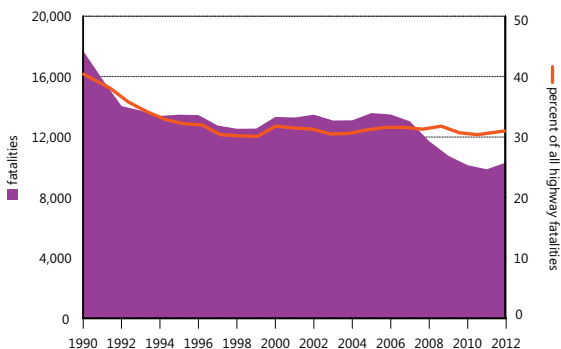


**Notes:** Graphs with same color trend lines have identical scales. Air carrier fatalities resulting from the Sept. 11, 2001 terrorist acts include only onboard fatalities.

**Sources:** as cited in U.S. Department of Transportation, Bureau of Transportation Statistics, *National Transportation Statistics*, tables 2-9, 2-14, 2-17, 2-19, 2-21, and 2-23, available at [www.bts.gov](http://www.bts.gov) as of June 2014.



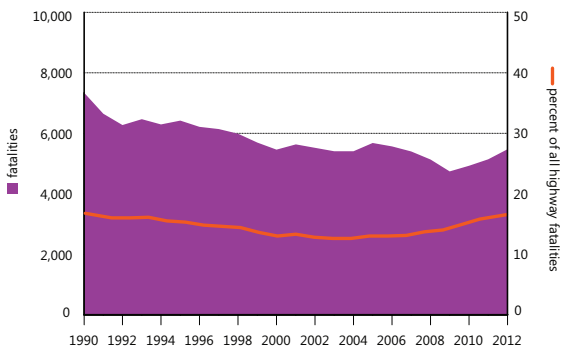
## 6-4 Alcohol-Impaired Driving Fatalities: 1990–2012



**Note:** Includes fatalities occurring in any crash involving a driver with a blood alcohol concentration (BAC) of 0.08 grams per deciliter or higher.

**Source:** U.S. Department of Transportation, National Highway Traffic Safety Administration, available at [www.nhtsa.gov](http://www.nhtsa.gov) as of September 2014.

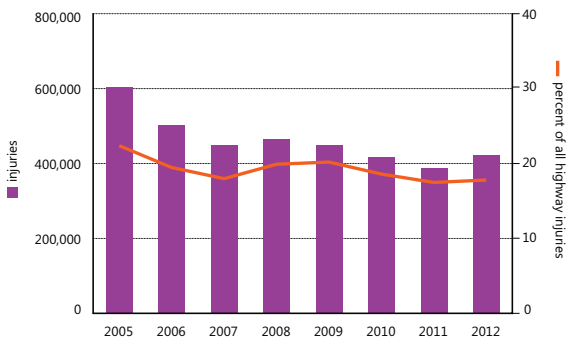
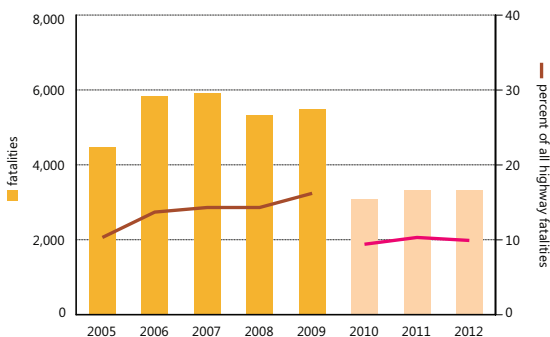
## 6-5 Pedestrian and Bicyclist Fatalities: 1990–2012



**Note:** Includes pedestrians and riders of nonmotorized bicycles and other pedal-powered vehicles.

**Source:** U.S. Department of Transportation, National Highway Traffic Safety Administration, available at [www.nhtsa.gov](http://www.nhtsa.gov) as of September 2014.

## 6-6 Distracted Driving Fatalities and Injuries: 2005–2012



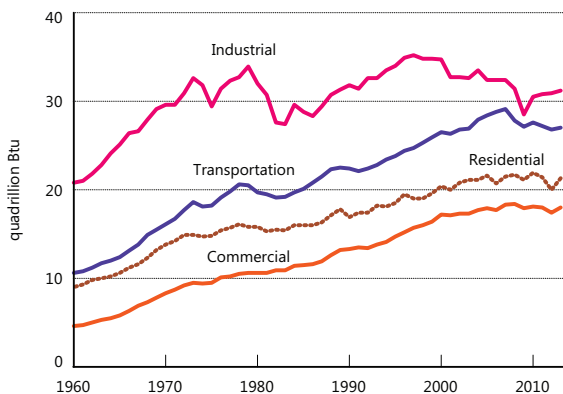
**Note:** Distracted driving fatality data for 2010 and on are not comparable with previous years due to changes in methodology.

**Source:** U.S. Department of Transportation, National Highway Traffic Safety Administration, available at [www.nhtsa.gov](http://www.nhtsa.gov) as of September 2014.

## 7 ENVIRONMENT

The U.S. transportation system is a major consumer of energy and generates significant environmental impacts.

### 7-1 Energy Consumption by Sector: 1960–2013



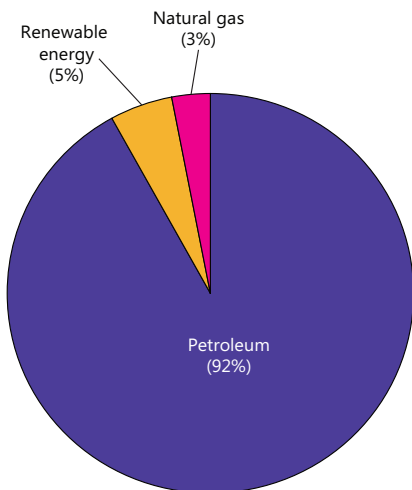
**Key:** Btu = British thermal unit.

**Note:** Includes primary energy consumption, electricity retail sales, and electrical system energy losses.

**Source:** U.S. Department of Energy, U.S. Energy Information Administration, *Monthly Energy Review*, available at [www.eia.gov/totalenergy/data/monthly](http://www.eia.gov/totalenergy/data/monthly) as of September 2014.

## 7-2 Transportation Energy Consumption by Source: 2013

percent of Btu consumed

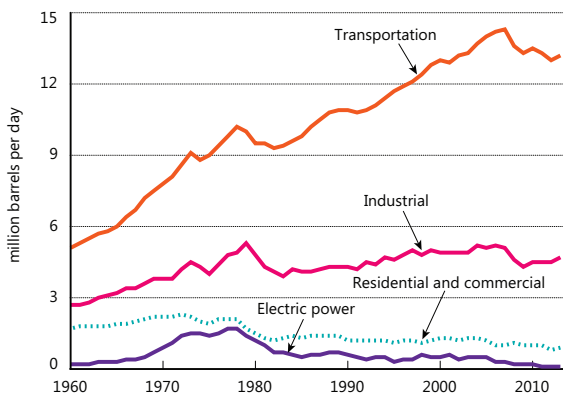


**Key:** Btu = British thermal unit.

**Note:** Excludes electricity retail sales and electrical system energy losses.

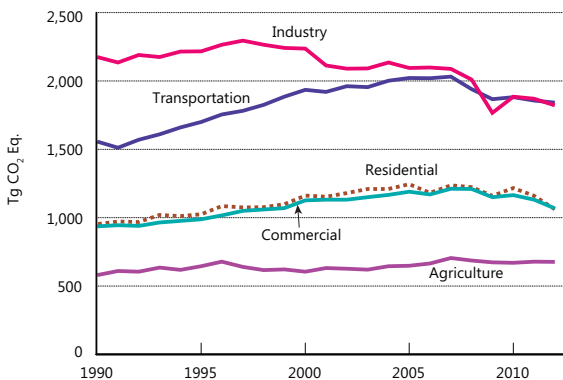
**Source:** U.S. Department of Energy, U.S. Energy Information Administration, *Monthly Energy Review*, available at [www.eia.gov/totalenergy/data/monthly](http://www.eia.gov/totalenergy/data/monthly) as of September 2014.

## 7-3 Petroleum Consumption by Sector: 1960–2013



**Source:** U.S. Department of Energy, U.S. Energy Information Administration, *Monthly Energy Review*, available at [www.eia.gov/totalenergy/data/monthly](http://www.eia.gov/totalenergy/data/monthly) as of September 2014.

## 7-4 Greenhouse Gas Emissions by Sector: 1990–2012



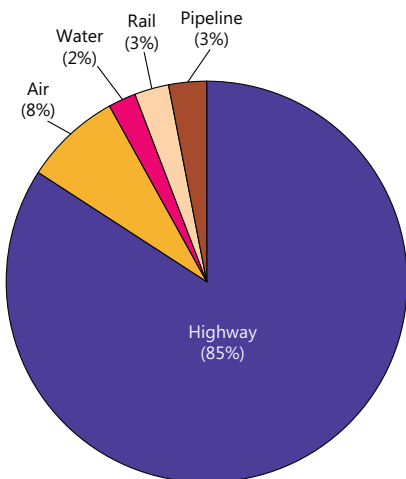
**Key:** Tg CO<sub>2</sub> Eq. = teragrams of carbon dioxide equivalent. A teragram = 1 million metric tons.

**Note:** Electric power sector emissions are distributed across sectors. Emissions include CO<sub>2</sub>, CH<sub>4</sub>, N<sub>2</sub>O, HFCs, PFCs, and SF<sub>6</sub>.

**Source:** U.S. Environmental Protection Agency, *Inventory of U.S. Greenhouse Gas Emissions and Sinks: 1990–2012*, available at [www.epa.gov/climatechange/ghgemissions/usinventoryreport.html](http://www.epa.gov/climatechange/ghgemissions/usinventoryreport.html) as of September 2014.

## 7-5 Transportation GHG Emissions by Mode: 2012

Percent of Tg CO<sub>2</sub> Eq.



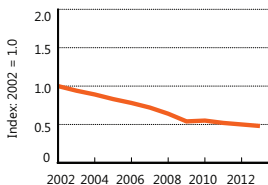
**Key:** GHG = greenhouse gas. Tg CO<sub>2</sub> Eq. = teragrams of carbon dioxide equivalent. A teragram = 1 million metric tons.

**Note:** Percents do not add to 100 due to rounding.

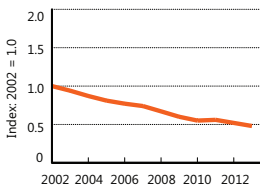
**Source:** U.S. Environmental Protection Agency, *Inventory of U.S. Greenhouse Gas Emissions and Sinks: 1990–2012*, available at [www.epa.gov/climatechange/ghgemissions/usinventoryreport.html](http://www.epa.gov/climatechange/ghgemissions/usinventoryreport.html) as of September 2014.

## 7-6 Highway Vehicle Air Pollutant Emissions: 2002–2013

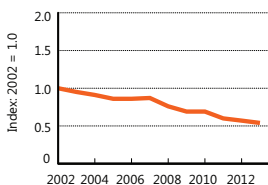
Carbon monoxide



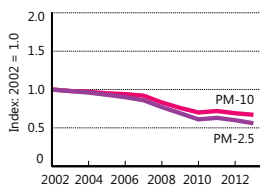
Nitrogen oxide



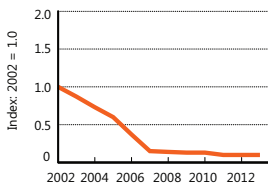
Volatile organic compounds



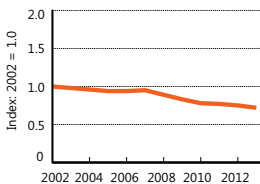
Particulate matter



Sulfur dioxide



Ammonia



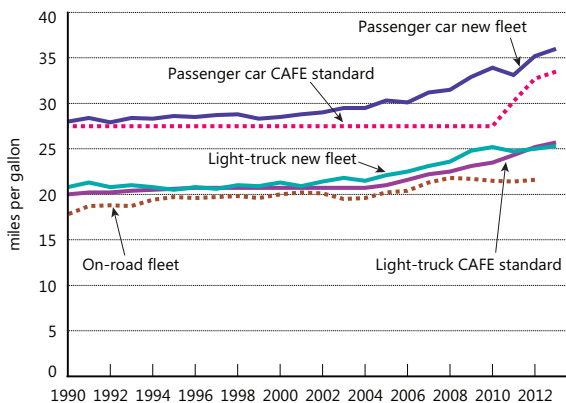
**Key:** PM-10 = airborne particulates of less than 10 microns; PM-2.5 = airborne particulates of less than 2.5 microns.

**Notes:** Indices are calculated using data on highway vehicle emissions only. Particulate matters include PM without condensibles.

**Sources:** as cited in U.S. Department of Transportation, Bureau of Transportation Statistics, *National Transportation Statistics*, tables 4-45 through 4-50, available at [www.bts.gov](http://www.bts.gov) as of September 2014.



## 7-7 Fuel Economy of Light-Duty Vehicles: 1990–2013

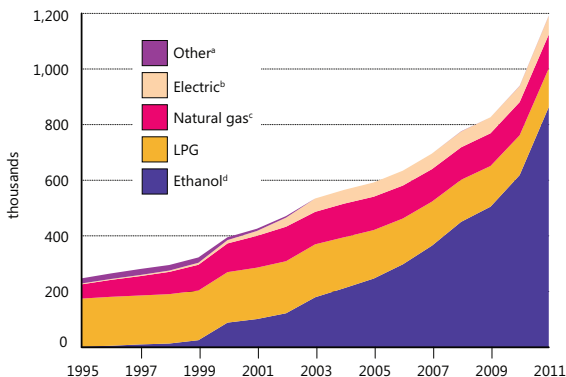


**Key:** CAFE = Corporate Average Fuel Economy; U = Data are unavailable.

**Notes:** New fleet data and CAFE standards are for vehicle model years. On-road fleet data include passenger cars and light trucks and are estimated using average miles traveled per gallon of fuel consumed for each calendar year.

**Source:** as cited in U.S. Department of Transportation, Bureau of Transportation Statistics, *National Transportation Statistics*, table 4-23, available at [www.bts.gov](http://www.bts.gov) as of September 2014.

## 7-8 Alternative Fuel Vehicles in Use: 1995–2011



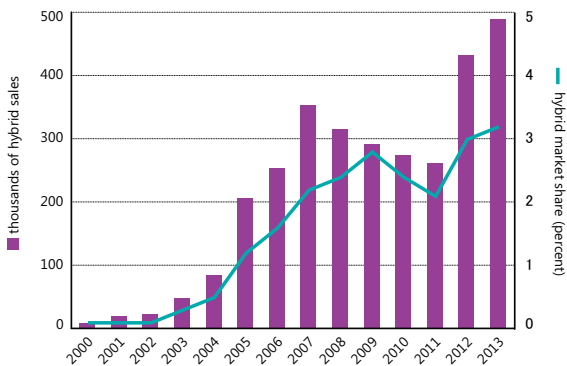
<sup>a</sup>Includes 85% methanol (M85), neat methanol (M100), and hydrogen fuels.

<sup>b</sup>Excludes gasoline-electric hybrids. <sup>c</sup>Includes compressed natural gas (CNG) and liquified natural gas (LNG). <sup>d</sup>Includes 85% ethanol (E85) and 95% ethanol (E95). E85 includes only fleet-based vehicles and excludes vehicles with E85 fueling capability owned by individuals.

**Key:** LPG = liquefied petroleum gas.

**Source:** U.S. Department of Energy, Energy Information Administration, available at [www.afdc.energy.gov/data](http://www.afdc.energy.gov/data) as of September 2014.

## 7-9 Hybrid Vehicle Sales: 2000–2013



Source: Ward's Automotive Group, [www.wardsauto.com](http://www.wardsauto.com) as of September 2014.

# GLOSSARY

**Air carrier:** Certificated provider of scheduled and nonscheduled services.

**Chained dollars:** A method to measure real changes in dollar values between years that uses chain-type indexes, rather than constant dollars. The method first calculates the real changes between adjacent years. Annual rates of real changes are then chained (multiplied) together to obtain the rate of real changes between nonadjacent years.

**Class I railroad:** Railroads earning adjusted annual operating revenues for three consecutive years of \$250,000,000 or more, based on 1991 dollars with an adjustment factor applied to subsequent years.

**Commuter rail:** Urban/suburban passenger train service for short-distance travel between a central city and adjacent suburbs run on tracks of a traditional railroad system. Does not include heavy or light rail transit service.

**Demand-response transit:** A nonfixed-route, nonfixed-schedule form of transportation that operates in response to calls from passengers or their agents to the transit operator or dispatcher.

**Directional route-miles:** The sum of the mileage in each direction over which transit vehicles travel while in revenue service.

**Directly operated service:** Transportation service provided directly by a transit agency, using their employees to supply the necessary labor to operate the revenue vehicles.

**Enplanements:** Total number of revenue passengers boarding aircraft.

**For-hire:** Refers to a vehicle operated on behalf of or by a company that provides services to external customers for a fee. It is distinguished from private transportation services, in which a firm transports its own freight and does not offer its transportation services to other shippers.

**General aviation:** Civil aviation operations other than those air carriers holding a Certificate of Public Convenience and Necessity. Types of aircraft used in general aviation range from corporate, multi-engine jets piloted by a professional crew to amateur-built, single-engine, piston-driven, acrobatic planes.

**Gross Domestic Product:** The total value of goods and services produced by labor and property located in the United States. As long as the labor and property are located in the United States, the suppliers may be either U.S. residents or residents of foreign countries.

**Heavy-rail transit:** High-speed transit rail operated on rights-of-way that exclude all other vehicles and pedestrians.

**Hybrid vehicle:** Hybrid electric vehicles combine features of internal combustion engines and electric motors. Unlike 100% electric vehicles, hybrid vehicles do not need to be plugged into an external source of electricity to be recharged. Most hybrid vehicles operate on gasoline.

**International Roughness Index (IRI):** A scale for roughness based on the simulated response of a generic motor vehicle to the roughness in a single wheel path of the road surface.

**Lane-miles:** One mile of one lane of road.

**Large certificated air carrier:** Carriers operating aircraft with a maximum passenger capacity of more than 60 seats or a maximum payload of more than 18,000 pounds. These carriers are also grouped by annual operating revenues: majors—more than \$1 billion; nationals—between \$100 million and \$1 billion; large regionals—between \$20 million and \$99,999,999; and medium regionals—less than \$20 million.

**Light-rail transit:** Urban transit rail operated on a reserved right-of-way that may be crossed by roads used by motor vehicles and pedestrians.

**Light-duty vehicle:** Passenger cars, light trucks, vans, pickup trucks, and sport/utility vehicles regardless of wheelbase.

**Nominal dollars:** A market value that does not take inflation into account and reflects prices and quantities that were current during the period being measured.

**Nonselved-propelled vessels:** Includes dry cargo, tank barges, and railroad car floats that operate in U.S. ports and waterways.

**Oceangoing vessels:** Includes U.S. flag, privately-owned merchant fleet of oceangoing, self-propelled, cargo-carrying vessels of 1,000 gross tons or greater.

**Particulates:** Carbon particles formed by partial oxidation and reduction of hydrocarbon fuel. Also included are trace quantities of metal oxides and nitrides originating from engine wear, component degradation, and inorganic fuel additives.

**Passenger-mile:** One passenger transported one mile. For example, one vehicle traveling 3 miles carrying 5 passengers generates 15 passenger-miles.

**Personal communication:** Involves contacting the source for data if not publicly available.

**Reliever airports:** Airports designated by the Federal Aviation Administration to relieve congestion at commercial service airports and to provide improved general aviation access to the overall community.

**Self-propelled vessels:** Includes dry cargo vessels, tankers, and offshore supply vessels, tugboats, pushboats, and passenger vessels, such as excursion/sightseeing boats, combination passenger and dry cargo vessels, and ferries.

**Short ton:** A unit of weight equal to 2,000 pounds.

**Structurally deficient:** Structural deficiencies are characterized by deteriorated conditions of significant bridge elements and reduced load-carrying capacity.

**Tg CO2 Eq.:** Teragrams of carbon dioxide equivalent, a metric measure used to compare the emissions from various greenhouse gases based on their global warming potential.

**Ton-mile:** A unit of measure equal to movement of one ton over one mile.

**Transportation Services Index:** BTS' monthly measure indicating the relative change in the volume of services over time performed by the for-hire transportation sector. Change is shown relative to a base year, which is given a value of 100. The TSI covers the activities of for-hire freight carriers, for-hire passenger carriers, and a combination of the two. See [www.bts.gov](http://www.bts.gov) for a detailed explanation.

**Unlinked passenger trip:** The number of passengers who board public transportation vehicles. Passengers are counted each time they board vehicles no matter how many vehicles they use to travel from their origin to their destination.

**Vehicle-mile:** One vehicle traveling one mile.

Statistics published in this Pocket Guide to Transportation come from many different sources. Some statistics are based on samples and are subject to sampling variability. Statistics may also be subject to omissions and errors in reporting, recording, and processing.

## Photo Credits

Cover (left to right)

Aaron Murphy

Rafael Vila

BTS Stock Photo

BTS Stock Photo

Kevin Abbott

Sébastien Dionne

**INFRASTRUCTURE**

**MOVING PEOPLE**

**MOVING GOODS**

**PERFORMANCE**

**ECONOMY**

**SAFETY**

**ENVIRONMENT**

**GLOSSARY**



Printed on paper containing recycled post  
consumer waste paper.