



TSUNAMI EVACUATION MAP SEASIDE & GEARHART, OREGON

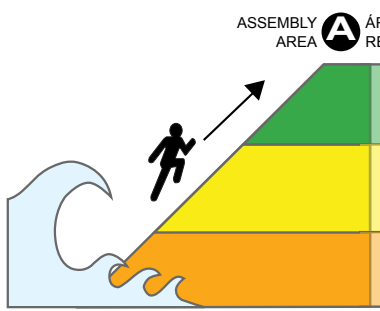


IF YOU FEEL AN EARTHQUAKE:

- Drop, cover, and hold
- Move immediately inland to higher ground
- Do not wait for an official warning

SI USTED SIENTE EL TEMBLOR:

- Tírese al suelo, cúbrase, y espere
- Diríjase de inmediato a un lugar más alto que el nivel del mar
- No espere por un aviso oficial



OUTSIDE HAZARD AREA: Evacuate to this area for all tsunami warnings or if you feel an earthquake.	ZONA DE PELIGRO EXTERIOR: Evacue a esta área para todas las advertencias del maremoto o si usted siente un temblor.
LOCAL CASCADIA EARTHQUAKE AND TSUNAMI: Evacuation zone for a local tsunami from an earthquake at the Oregon coast.	MAREMOTO LOCAL (terremoto de Cascadia): Zona de evacuación para un tsunami local de un temblor cerca de la costa de Oregon.
DISTANT TSUNAMI: Evacuation zone for a distant tsunami from an earthquake far away from the Oregon coast.	MAREMOTO DISTANTE: Zona de evacuación para un tsunami distante de un temblor lejos de la costa de Oregon.

MAP SYMBOLS / SÍMBOLOS DEL MAPA

- Evacuation route / Ruta de evacuación
- Ⓐ Assembly area / Área reunión
- ⌈⌋ Bridge / Puente
- 🏫 School / Escuela
- 🏛️ City Hall / Municipalidad
- 🚒 Fire Department / Bomberos
- 👮 Law enforcement / Policía
- 🏥 Hospital / Hospital
- ✈️ Airport/Aeropuerto
- 👤 Trail / Sendero
- + 35' Elevation, in feet / Elevación, en pies
- SCALE / ESCALA**
0.25 mile / 0.25 km
- 🟡 City of Gearhart Optional High Ground* - Evacuate to this area only as a last resort (if you cannot get outside the hazard area before the first tsunami wave arrives).
- Ⓐ City of Gearhart Optional Tsunami Assembly Area*

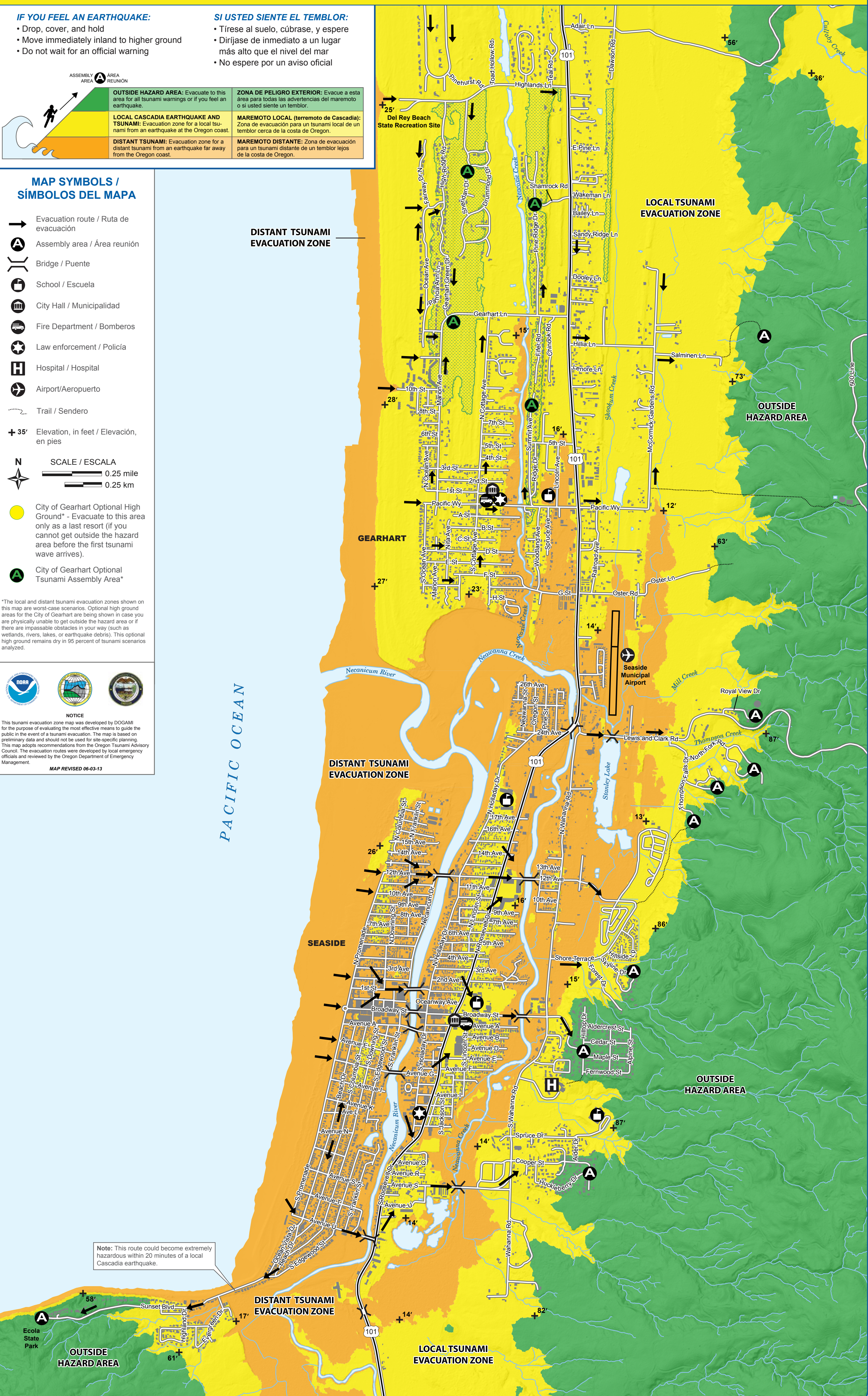
*The local and distant tsunami evacuation zones shown on this map are worst-case scenarios. Optional high ground areas for the City of Gearhart are being shown in case you are physically unable to get outside the hazard area or if there are impassable obstacles in your way (such as wetlands, rivers, lakes, or earthquake debris). This optional high ground remains dry in 95 percent of tsunami scenarios analyzed.



NOTICE
This tsunami evacuation zone map was developed by DOGAMI for the purpose of evaluating the most effective means to guide the public in the event of a tsunami evacuation. The map is based on preliminary data and should not be used for site-specific planning. This map adopts recommendations from the Oregon Tsunami Advisory Council. The evacuation routes were developed by local emergency officials and reviewed by the Oregon Department of Emergency Management.

MAP REVISED 06-03-13

PACIFIC OCEAN



Note: This route could become extremely hazardous within 20 minutes of a local Cascadia earthquake.

If you feel an earthquake, a tsunami may be coming...

- **DROR COVER, HOLD** until the earthquake is over; protect yourself and family members from falling objects
- **MOVE IMMEDIATELY INLAND** to high ground and away from low-lying coastal areas
- **FOLLOW EVACUATION ROUTE SIGNS**
- **DO NOT WAIT** for an official warning
- **GO ON FOOT** if at all possible
- **DO NOT PACK** or delay
- **DO NOT RETURN** to the beach – large waves may continue to come onshore for several hours
- **WAIT** for an "all clear" from local emergency officials before returning to low-lying areas



www.OregonTsunami.org



Funded by the National Oceanic and Atmospheric Administration under NTHMP contract award DG1339W07CND0335 through the Oregon Department of Geology and Mineral Industries. Published by the Oregon Department of Geology and Mineral Industries in consultation with local emergency management officials.

- International Tsunami Information Center**
737 Bishop Street, Suite 2200
Honolulu, HI 96813
(808) 532-6422
<http://itic.ioc-unesco.org>
- Nature of the Northwest Information Center**
800 NE Oregon Street #28, Suite 965
Portland, OR 97232
(971) 673-2331
<http://www.naturenw.org>
- Oregon Department of Geology and Mineral Industries**
800 NE Oregon Street #28, Suite 965
Portland, OR 97232
(971) 673-1555
<http://www.oregongeology.org>
- Clatsop County Emergency Management**
800 Exchange Street, Suite 400
Astoria, OR 97103
(503) 325-8645
www.co.clatsop.or.us
- City of Gearhart**
698 Pacific Way
Gearhart, OR 97138
(503) 738-5501
www.cityofgearhart.com
- Gearhart Fire Department**
670 Pacific Way
Gearhart, OR 97138
(503) 738-7838
www.gearhartfire.com
- City of Seaside**
989 Broadway Street
Seaside, OR 97138
(503) 738-6311 non-business hours
www.cityofseaside.us

CONTACTS



Seaside & Gearhart



This information could save your life – Please read it and share it with your family and friends.



BE PREPARED!

- Assemble **emergency kits** with at least a 3-day supply for each family member:
- Local map showing safe evacuation routes to high ground
 - First-aid supplies, prescriptions and non-prescription medication
 - Water bottle and filtration or treatment supplies capable of providing 1 gallon per person per day
 - Non-perishable food (ready-to-eat meals, canned food, baby food, energy bars)
 - Cooking and eating utensils, can opener, Sterno® or other heat source
 - Matches in water-proof container or lighter
 - Shelter (tent), sleeping bags, blankets
 - Portable radio, NOAA weather radio, flashlight, and extra batteries
 - Rain gear, sturdy footwear, extra clothing
 - Personal hygiene items (toilet paper, soap, toothbrush)
 - Tools and supplies (pocket knife, shut-off wrench, duct tape, gloves, whistles, plastic bags)
 - Cash

WHAT TO KNOW about tsunamis

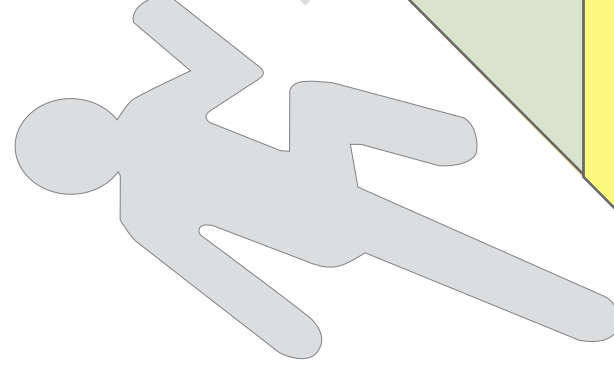
A **tsunami** is a series of sea waves, usually caused by a displacement of the ocean floor by an undersea earthquake. As tsunamis enter shallow water near land, they increase in height and can cause great loss of life and property damage.

Recent research suggests that tsunamis have struck the Oregon coast on a regular basis. They can occur any time, day or night. Typical wave heights from tsunamis occurring in the Pacific Ocean over the last 500 years have been 20–65 feet at the shoreline. However, because of local conditions a few waves may have been much higher — as much as 100 feet.

We distinguish between a tsunami caused by an undersea earthquake near the Oregon coast (a **local tsunami**) and an undersea earthquake far away from the coast (a **distant tsunami**).

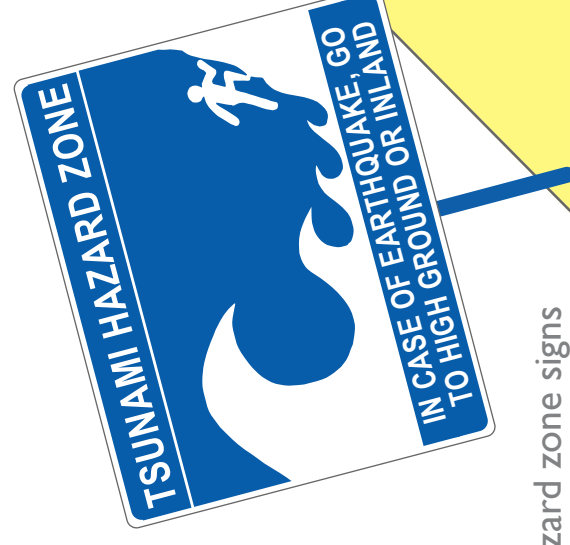
How to help with tsunami awareness in your community

- Start a tsunami buddy system
 - Make and distribute emergency packs
 - Initiate or participate in a local preparedness program
- Visit OregonTsunami.org to find more great resources!



Local tsunamis

A **local tsunami** can come onshore within 15 to 20 minutes after the earthquake — before there is time for an official warning from the national warning system. Ground shaking from the earthquake may be the only warning you have. Evacuate quickly!



Look for these hazard zone signs and be ready to leave the area by following evacuation route signs.

Distant tsunamis

A **distant tsunami** will take 4 hours or more to come ashore. You will feel no earthquake, and the tsunami will generally be smaller than that from a local earthquake. Typically, there is time for an official warning and evacuation to safety.

Evacuation for a distant tsunami will generally be indicated by a **3-minute siren blast** (if your area has sirens) and an announcement over NOAA weather radio that the local area has been put into an official **TSUNAMI WARNING**. In isolated areas along beaches and bays you may not hear a warning siren. Here, a **sudden change of sea level** should prompt you to move immediately to high ground. If you hear the 3-minute blast or see a sudden sea level change, first evacuate away from shoreline areas, then turn on your local broadcast media or NOAA weather radio for more information.



WHAT TO DO for both local and distant tsunamis

1. Evacuate on foot, if at all possible. Follow evacuation signs and arrows to an Assembly Area.*
2. If you need help evacuating, tie something **white** (sheet or towel) to the front door knob. Make it large enough to be visible from the street. If the emergency is a distant tsunami, then help may arrive. In the event of a local tsunami, it is unlikely that anyone will help you, so make a plan and be prepared!
3. Stay away from potentially hazardous areas until you receive an ALL CLEAR from local officials. Tsunamis often follow river channels, and dangerous waves can persist for several hours. Local officials must inspect all flooded or earthquake-damaged structures before anyone can go back into them.
4. After evacuation, check with local emergency officials if you think you have special skills and can help, or if you need assistance locating lost family members.

*Assembly areas **A** are shown on the map. Do not confuse Assembly Areas with Evacuation Centers, which are short-term help centers set up after a disaster occurs.