



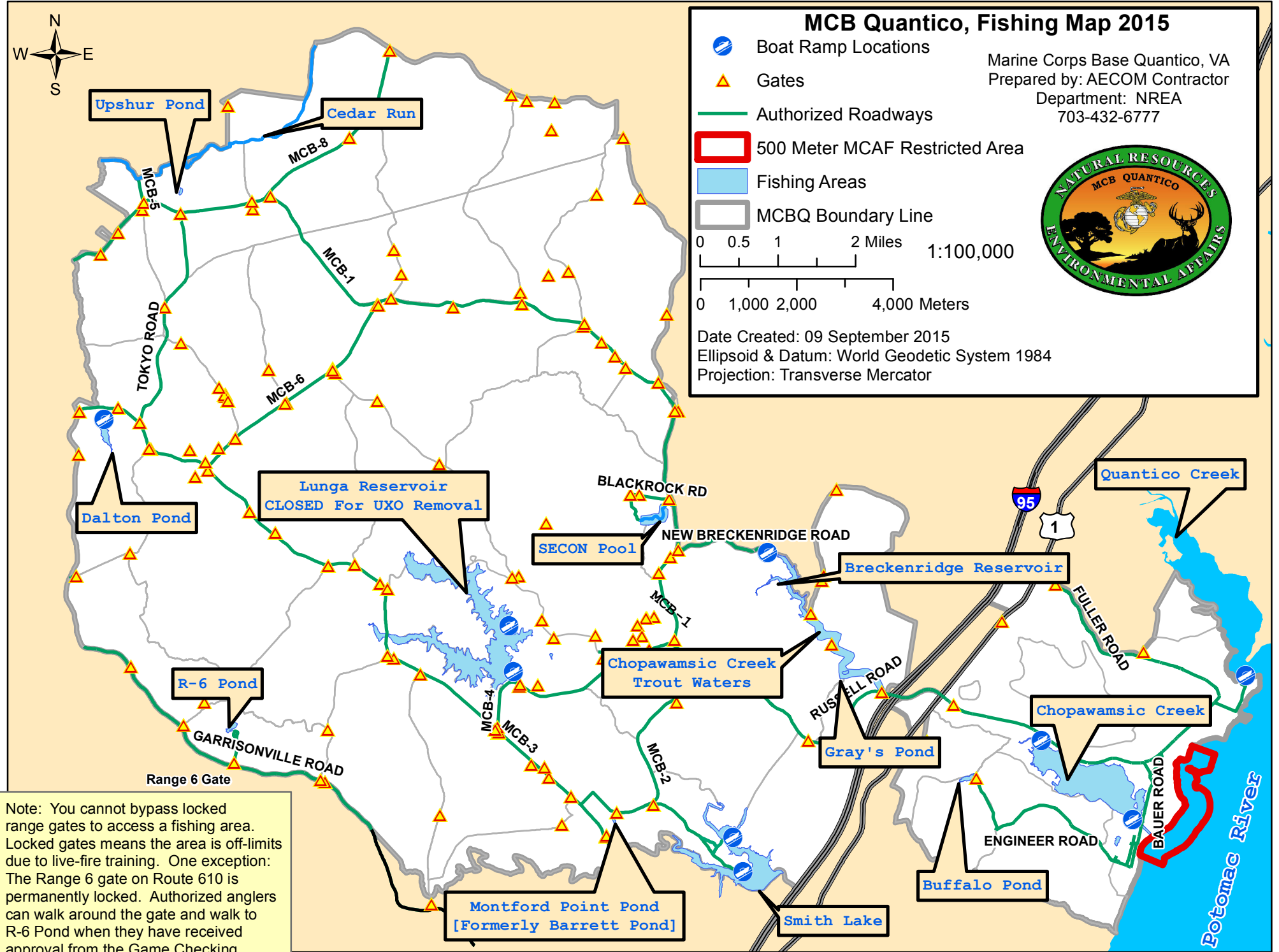
# MCB Quantico, Fishing Map 2015

Marine Corps Base Quantico, VA  
Prepared by: AECOM Contractor  
Department: NREA  
703-432-6777



- Boat Ramp Locations
  - Gates
  - Authorized Roadways
  - 500 Meter MCAF Restricted Area
  - Fishing Areas
  - MCBQ Boundary Line
- 0 0.5 1 2 Miles 1:100,000
- 0 1,000 2,000 4,000 Meters

Date Created: 09 September 2015  
Ellipsoid & Datum: World Geodetic System 1984  
Projection: Transverse Mercator



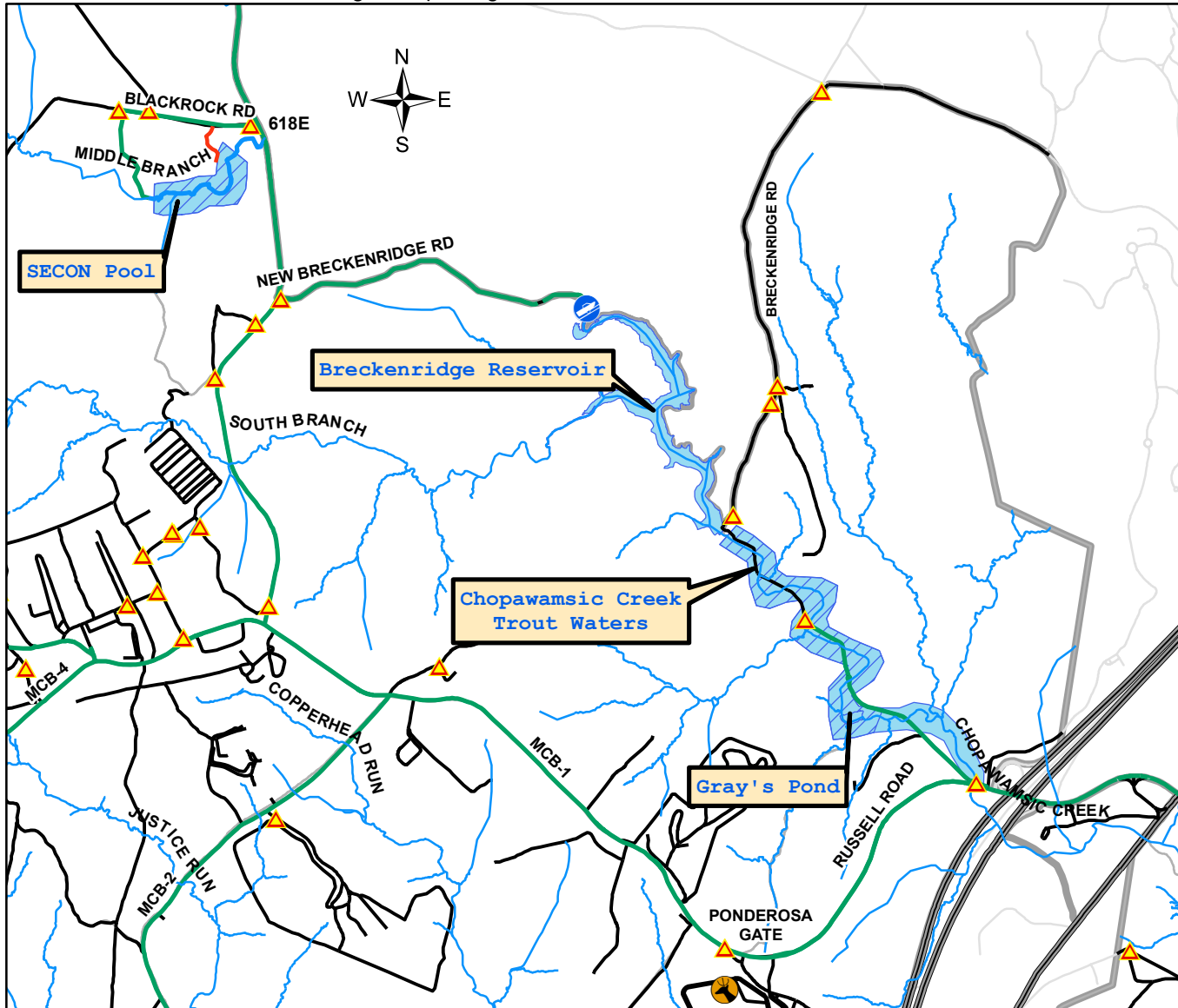
Note: You cannot bypass locked range gates to access a fishing area. Locked gates means the area is off-limits due to live-fire training. One exception: The Range 6 gate on Route 610 is permanently locked. Authorized anglers can walk around the gate and walk to R-6 Pond when they have received approval from the Game Checking Station to enter Training Area 9C.

Map Disclaimer: Although every effort has been made to ensure the accuracy of the information, errors and conditions originating from physical sources to develop the database may be reflected in the data supplied. The user must be aware of the data conditions and ultimately bear responsibility for the appropriate use of the information with respect to possible errors, original map scale, collection methodology, currency of the data, and other conditions specific to certain data.

# Virginia Designated Trout Fishing Water Marine Corps Base Quantico: 2015

Directions to SECON Pool Fishing Area:  
Enter MCBQ through Ponderosa Gate, continue on MCB 1 (remember: MCB 1 turns right after you pass fire station), turn left onto Blackrock Rd. continue on Blackrock Rd. until you reach designated parking area.

Open 5 AM until one hour after sunset.  
Virginia Freshwater, Virginia Trout, and Marine Corps Base Quantico fishing licenses are required.  
Anglers may only access the designated creek areas.



- Boat Ramp Locations
- Gates
- GCS
- Streams
- Trail
- Authorized Roadways
- Fishing Areas 1:40,000

0 0.2 0.4 0.8 Miles

0 395 790 1,580 Meters

**IMPORTANT:**  
Fishing within SECON pool is restricted to kids 12 and under. Adults must fish BELOW the SECON pool dam. You must stay within designated "Trout Waters." The surrounding woodlands are off-limits.

SECON Fishing area may be closed some days during scheduled military training. When the 618E gate is locked, fishing is closed.

Marine Corps Base Quantico, VA  
Prepared by: AECOM Contractor  
Department: NREA  
703-432-6777  
Date Created: 10 September 2015  
Ellipsoid & Datum: World Geodetic System 1984  
Projection: Transverse Mercator

Map Disclaimer: Although every effort has been made to ensure the accuracy of the information, errors and conditions originating from physical sources to develop the database may be reflected in the data supplied. The user must be aware of the data conditions and ultimately bear responsibility for the appropriate use of the information with respect to possible errors, original map scale, collection methodology, currency of the data, and other conditions specific to certain data.