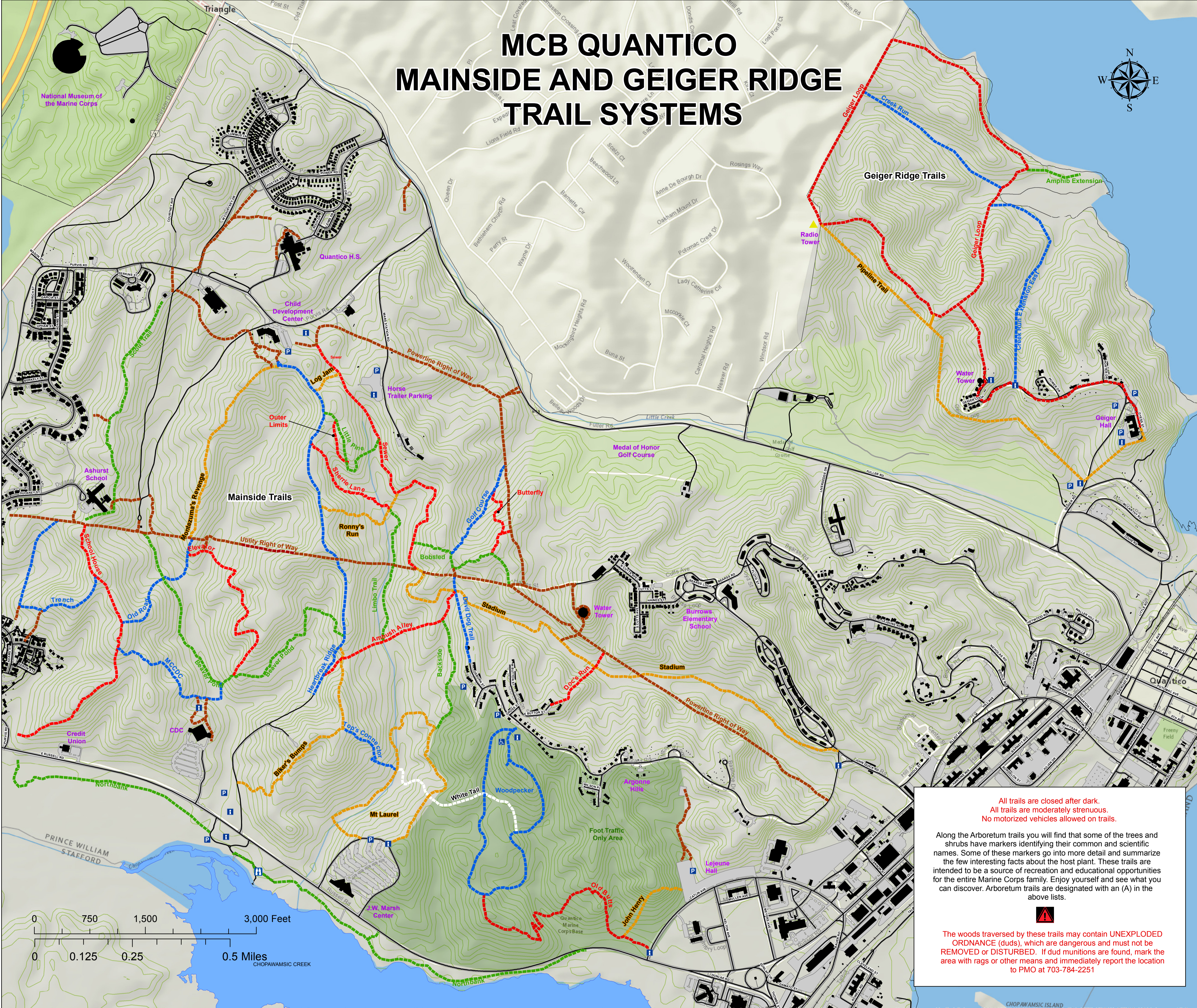


# MCB QUANTICO MAINSIDE AND GEIGER RIDGE TRAIL SYSTEMS



**GEIGER RIDGE TRAILS: The following trails are for pedestrians and bicycles only.**

TRAIL NAME	MILES	Icons
Amphib Ext.	0.2	[Pedestrian] [Bicycle] [No Horse]
Creek Run	0.5	[Pedestrian] [Bicycle] [No Horse]
Geiger Loop	3.7	[Pedestrian] [Bicycle] [No Horse]
Pipeline Trail	1.5	[Pedestrian] [Bicycle] [No Horse]

**The following trail is for pedestrians only.**

Creek Run Ext. East	0.6	[Pedestrian] [No Bicycle] [No Horse]
---------------------	-----	--------------------------------------

**MAINSIDE TRAILS: The following trails are open for pedestrians, bicycles, and horse traffic.**

TRAIL NAME	MILES	Icons
Ambush Alley	0.4	[Pedestrian] [Bicycle] [Horse]
Backside Trail	0.3	[Pedestrian] [Bicycle] [Horse]
Beaver Pond Trail	0.8	[Pedestrian] [Bicycle] [Horse]
Biker's Bumps Trail	0.6	[Pedestrian] [Bicycle] [Horse]
Bobsled Trail	0.4	[Pedestrian] [Bicycle] [Horse]
Butterfly Trail	0.1	[Pedestrian] [Bicycle] [Horse]
Devil Dog Trail	0.2	[Pedestrian] [Bicycle] [Horse]
Doc's Run Trail	0.3	[Pedestrian] [Bicycle] [Horse]
Elevator Trail	0.6	[Pedestrian] [Bicycle] [Horse]
Golf Course Trail	0.3	[Pedestrian] [Bicycle] [Horse]
Heartbreak Ridge Trail	1.0	[Pedestrian] [Bicycle] [Horse]
Limbo Trail	0.4	[Pedestrian] [Bicycle] [Horse]
Little Pine	0.3	[Pedestrian] [Bicycle] [Horse]
Log Jam	0.1	[Pedestrian] [Bicycle] [Horse]
MCCDC Trail	0.4	[Pedestrian] [Bicycle] [Horse]
Montezuma's Revenge	0.5	[Pedestrian] [Bicycle] [Horse]
Mt. Laurel Trail (A)	1.0	[Pedestrian] [Bicycle] [Horse]
Old Road Trail	0.3	[Pedestrian] [Bicycle] [Horse]
Outer Limits	0.1	[Pedestrian] [Bicycle] [Horse]
Ronny's Run	0.3	[Pedestrian] [Bicycle] [Horse]
School House	0.7	[Pedestrian] [Bicycle] [Horse]
Scout Trail	0.5	[Pedestrian] [Bicycle] [Horse]
Sewer Trail	1.0	[Pedestrian] [Bicycle] [Horse]
Sherrie Lane	0.3	[Pedestrian] [Bicycle] [Horse]
Stadium Trail	1.7	[Pedestrian] [Bicycle] [Horse]
Top's Connector	0.2	[Pedestrian] [Bicycle] [Horse]
Trench Trail	0.5	[Pedestrian] [Bicycle] [Horse]

**The following is open to pedestrians and bikes.**

Northbank Trail (A)	1.0	[Pedestrian] [Bicycle] [No Horse]
---------------------	-----	-----------------------------------

**The following trails are open only to pedestrians.**

John Henry	0.2	[Pedestrian] [No Bicycle] [No Horse]
Old Butts	0.8	[Pedestrian] [No Bicycle] [No Horse]
White Tail (A)	0.4	[Pedestrian] [No Bicycle] [No Horse]
Woodpecker Trail (A)	1.2	[Pedestrian] [No Bicycle] [No Horse]

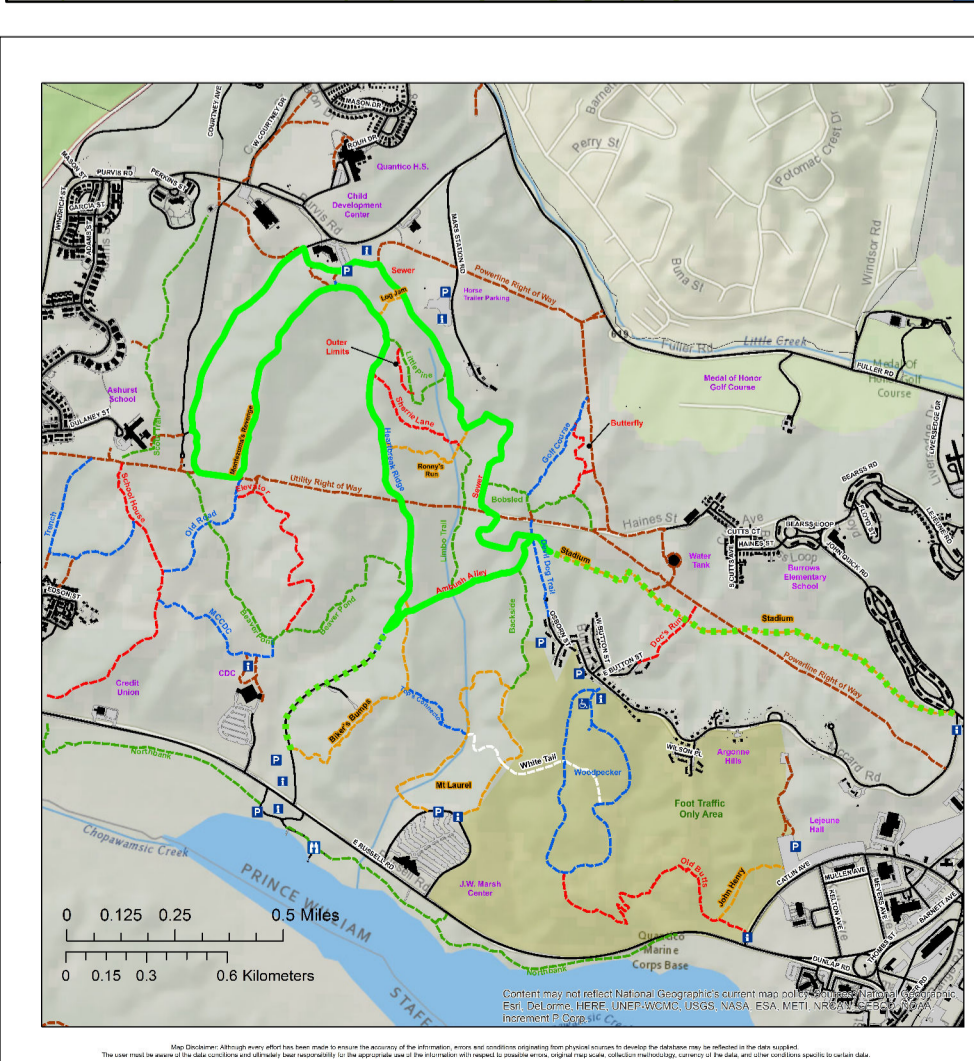
**Legend:**

- [Handicap Symbol] Handicap Accessible
- [Information Symbol] Information
- [Parking Symbol] Parking
- [Wildlife Symbol] Wildlife Viewing Area

All trails are closed after dark.  
All trails are moderately strenuous.  
No motorized vehicles allowed on trails.

Along the Arboretum trails you will find that some of the trees and shrubs have markers identifying their common and scientific names. Some of these markers go into more detail and summarize the few interesting facts about the host plant. These trails are intended to be a source of recreation and educational opportunities for the entire Marine Corps family. Enjoy yourself and see what you can discover. Arboretum trails are designated with an (A) in the above lists.

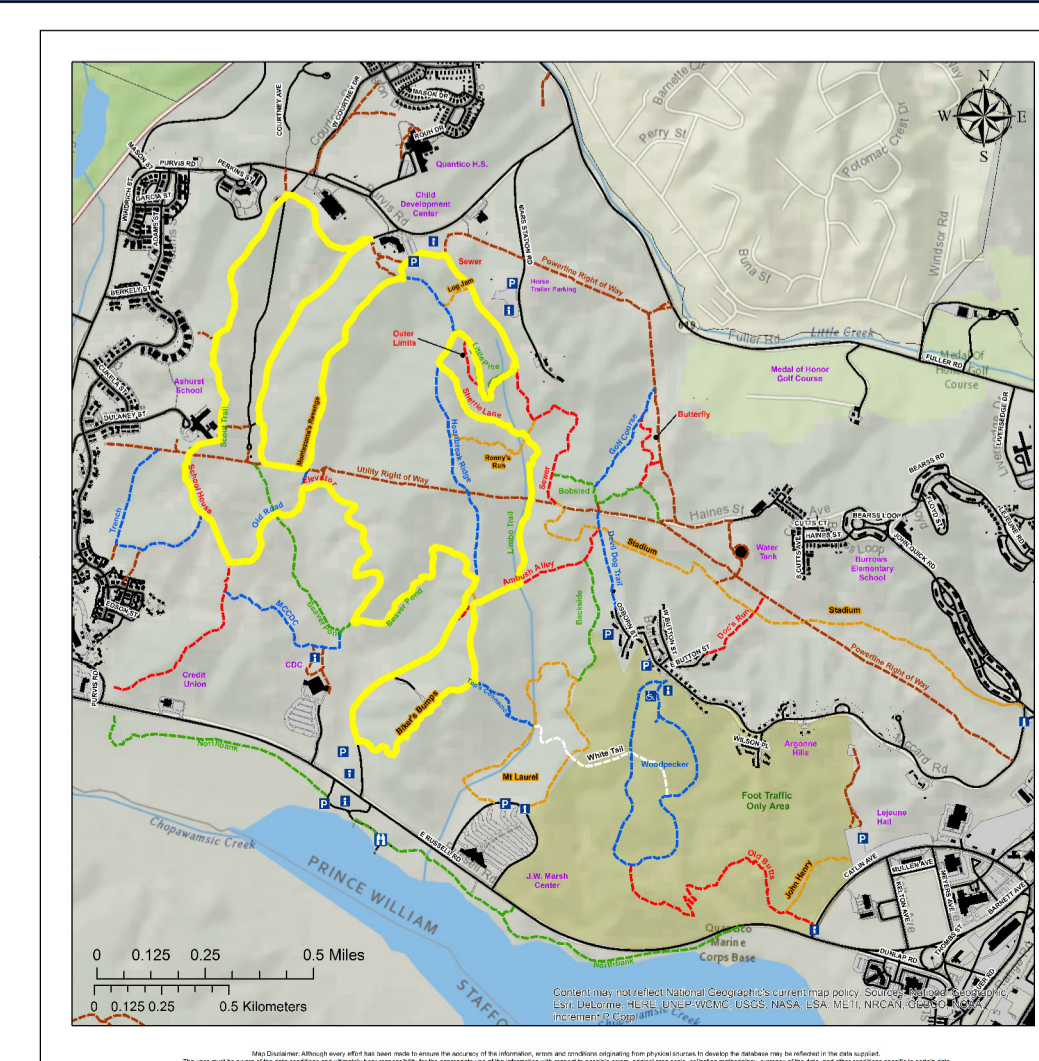
**Warning:** The woods traversed by these trails may contain UNEXPLODED ORDNANCE (duds), which are dangerous and must not be REMOVED or DISTURBED. If dud munitions are found, mark the area with rags or other means and immediately report the location to PMO at 703-784-2251



**Marine Corps Base Quantico Mainside Trails**  
Quantico Mountain Bike Club Green Course  
Beginner Fitness Level: 3.8 Miles  
Including Stadium Trail: 6.2 Miles

**QMTB**

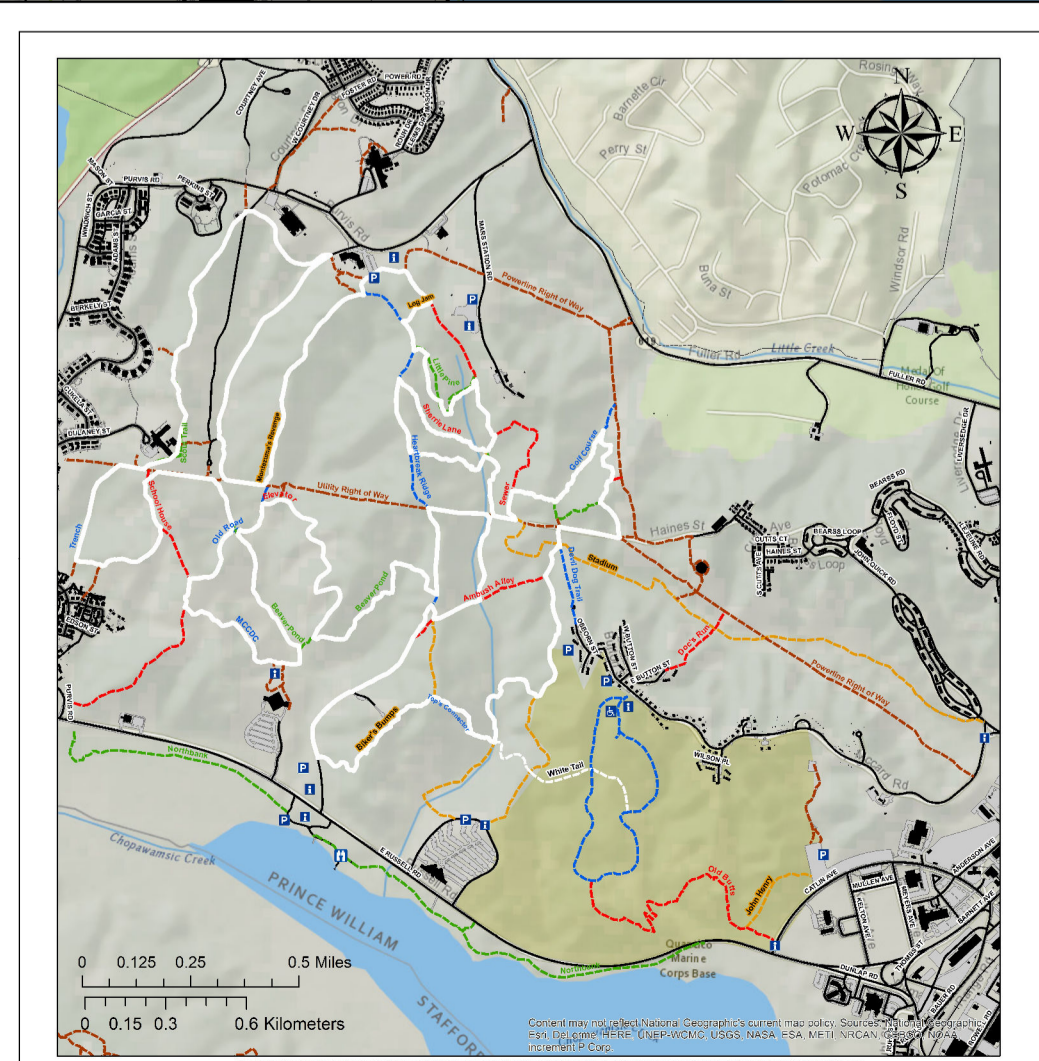
Marine Corps Base Quantico, VA  
Maps Prepared by: AECOM Contractor  
Department: NREA  
703-784-4030  
Date Created: 13 May 2015  
Ellipsoid & Datum: World Geodetic System 1984  
Projection: Transverse Mercator  
Scale: 1:14,000



**Marine Corps Base Quantico Mainside Trails**  
Quantico Mountain Bike Club Yellow Course  
Intermediate Fitness Level: 6.8 Miles

**QMTB**

Marine Corps Base Quantico, VA  
Maps Prepared by: AECOM Contractor  
Department: NREA  
703-784-4030  
Date Created: 13 May 2015  
Ellipsoid & Datum: World Geodetic System 1984  
Projection: Transverse Mercator  
Scale: 1:14,000



**Marine Corps Base Quantico Mainside Trails**  
Quantico Mountain Bike Club White Course  
Advanced Fitness Level: 10.5 Miles

**QMTB**

Marine Corps Base Quantico, VA  
Maps Prepared by: AECOM Contractor  
Department: NREA  
703-784-4030  
Date Created: 13 May 2015  
Ellipsoid & Datum: World Geodetic System 1984  
Projection: Transverse Mercator  
Scale: 1:14,000

Marine Corps Base Quantico, VA  
Map Prepared by: AECOM Contractor  
Department: NREA  
703-784-4030  
Date Created: 07 April 2015  
Ellipsoid & Datum: World Geodetic System 1984  
Projection: Transverse Mercator  
Scale: 1:7,500