

RANGE 4

RANGE DESCRIPTION

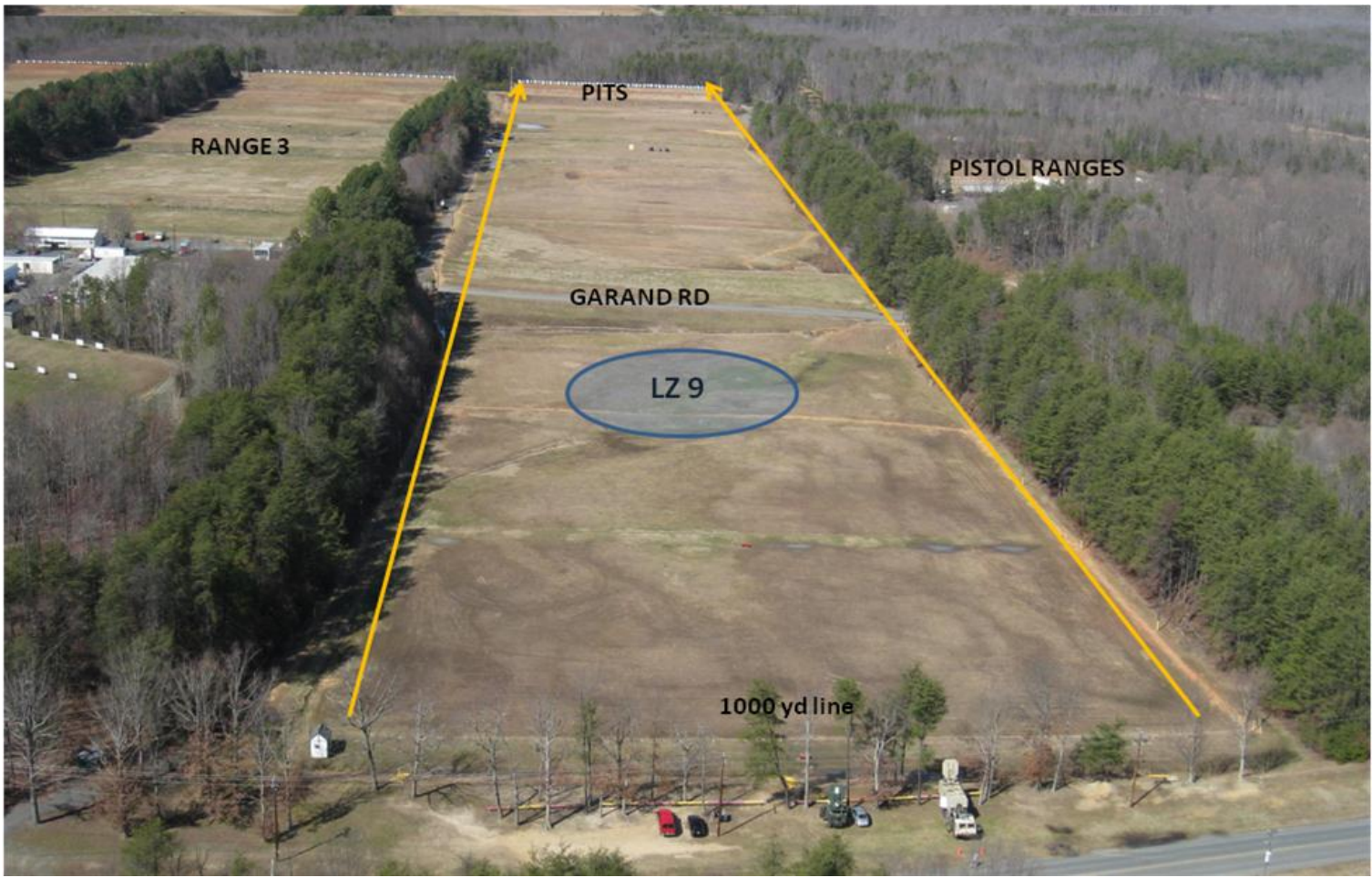
Range 4 is an active, small arms, live-fire known distance range located at Grid. It is accessible from MCB-4. Range 4 has 50 firing points and firing distances from 100 to 1000 yards.

Primary Use: The primary purpose is the execution of Scout Sniper Instruction and Competitive Marksmanship Training for Marine Corps Rifle Teams.

DOWN RANGE MOVEMENT INTO THE IMPACT AREA (BEYOND THE IMPACT BERM) IS PROHIBITED



WTBN Range 4



GENERAL RANGE INFORMATION:

Number of Firing Points: 50

Weapons authorized:

- Approved service rifles
- Sniper, competition and special application rifles
- Service shotguns
- Service pistols
- Approved foreign weapons
- Approved pyrotechnics and illumination when fire conditions allow.
- Approved R&D weapons

Ammunition authorized:

- .22cal (All)
- Shotgun (All)
- 5.56mm (All)
- 7.62mm (All)
- Pistol (All)
- .50 cal (All)
- .338
- .300

- Approved rifle team competition ammunition
- Approved foreign weapon ammunition
- 40mm illumination grenade

Targets: Targets on Range 4 will be placed in the target carriages for KD firing. For short range shooting, targets can be placed on the 100 yard firing lines. Targets will be placed as to ensure that projectiles do not impact the protective berm. Targets are limited to paper, wood, plastic, glass and steel.



Range 4 200 yard line.



Range 4 300 yard line



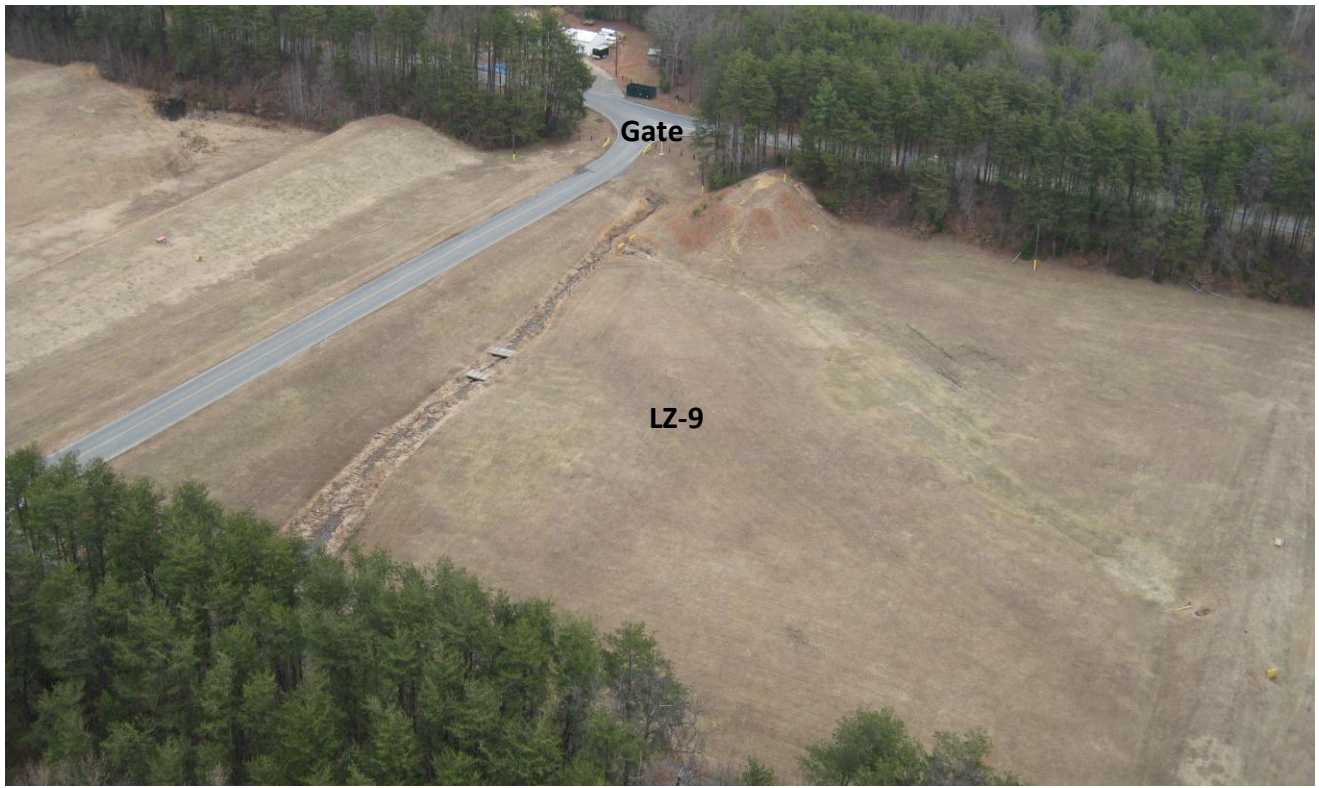
Range 4 500 yard line



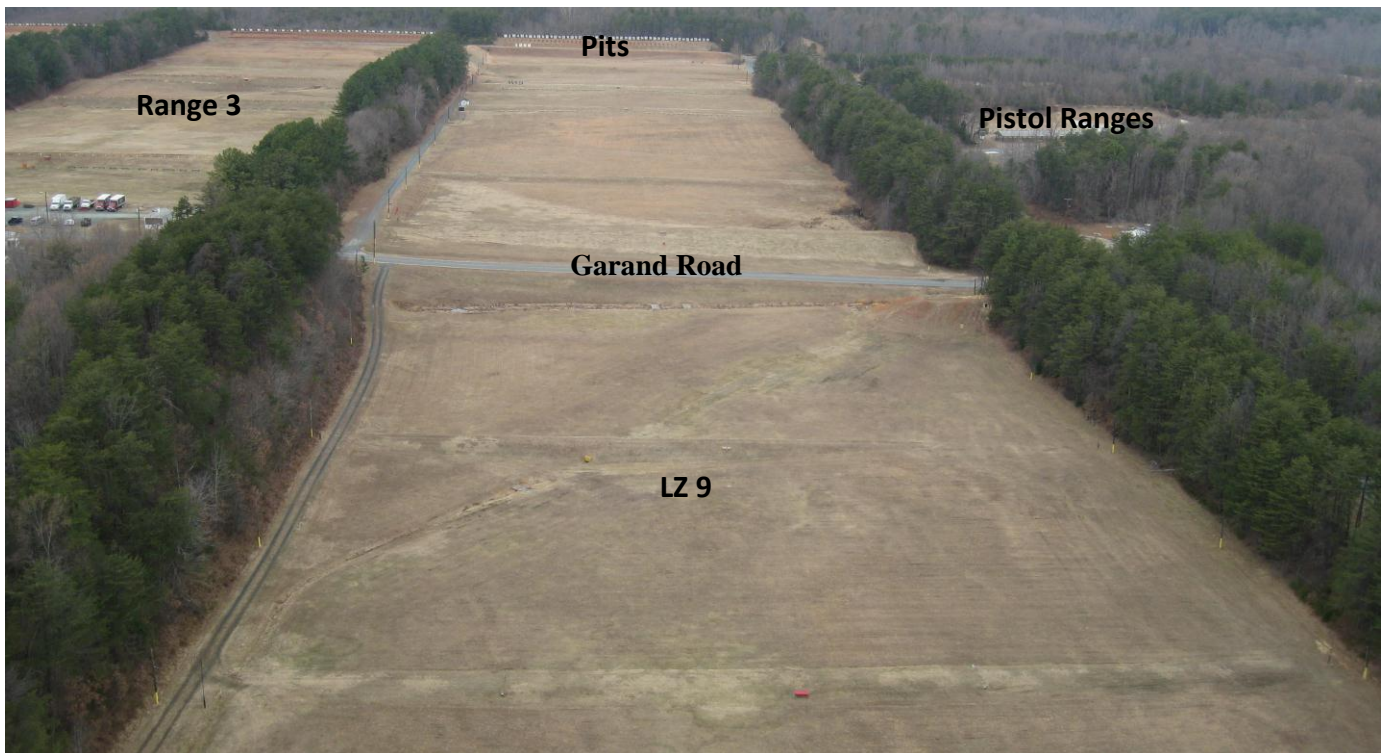
Range 4 800 yard line



Range 4 1000 yard line



Range 4 Sniper Hill/LZ-9 (Emergency LZ)



Range 4 Aerial/LZ-9 (Emergency LZ)

ADDITIONAL RANGE INFORMATION:

PRIMARY DIRECTION OF FIRE. Northwest

SPECIAL INSTRUCTIONS/COMMENTS

1. All range regulations (MCBO 3570.1) and the WTBN Range 4 SOP must be adhered to.
2. Using unit will check-in with WTBn S-3 and receive range brief prior to occupying the range.
3. Red range flags will be placed on the pit poles next to target 1 and 50 and on the poles on either side of the firing lines being used. For night shooting a red strobe is located at the center of the 600 yard line.
4. The only weapons and ammunition approved for use on this range are listed in this SOP. There shall be no deviations from or modification to the approved weapons and ammunition.
5. Movement between firing lines must be coordinated with WTBn S-3 via radio communication.
6. Fire and Maneuver is not authorized. Fire and movement and firing on the move to support the execution of the Marine Corps Combat Marksmanship Program Table 2-4 Short range engagements and the Scout Sniper transition course is authorized.
7. Personnel will only enter the pits when authorized by the RSO and WTBn S-3.
8. Steel targets are authorized on Range 4 IAW SOUM 2-02 with the following restrictions:
 - a. All targets must be placed, at a minimum, forward of the 500 yard line.
 - b. Personnel on adjacent ranges must be physically up-range of the location of the steel targets.
 - c. ****Steel targets will not be engaged closer than 100m with 5.56mm, 7.62mm, .300 or .338.**
 - d. Steel targets are not authorized for .50 cal.
9. The Officer-in-Charge (OIC) shall be the rank of Staff Sergeant or above and will be certified in accordance with MCB Range Regulations. The Range Safety Officer (RSO) shall be the rank of Sergeant or above and will be qualified in accordance with MCB Range Regulations.

10. The RSO will be physically present on the range at all times during live fire training and events. The OIC must be physically on the WTBn range complex and must maintain radio contact with the RSO at all times.

11. There will be no personnel on adjacent ranges forward of any targets on Range 4.

a. Personnel on Range 4 cannot be forward of any static targets on Range 3 or either of the Pistol Ranges.

b. Personnel on Range 3 or either of the Pistol Ranges cannot be forward of any Range 4 static targets.

12. Personnel will not occupy any portion of the SDZs unless they are protected by artificial barriers. Any personnel located in the pits will remain on the catwalk during firing.

13. Strict inter-range and intra-range coordination and communication will be exercised to ensure personnel are not exposed to direct weapons fire or ricochet hazards.

14. When firing beyond the 600 yard line, the gates on Garand road must be closed and live-fire in progress signs posted. Additionally, a red flag must be flown at the gate flagpoles.

15. The following restrictions apply to firing the M82A1/M82A3/M107/M107A rifles. Similar weapon systems will be coordinated and approved by Range Control.

a. When firing .50 cal MK211 A606 ammunition, firing will only be done from firing points 48-50 on the 1000 yard line. The targets will be in carriages 1-3 (firing from big to little end). No personnel can be in the pits on Range 4 or occupy any of Range 3.

b. When firing .50 cal, ball ammunition firing will only be done from the 500 to 1000 yard lines. Targets will be placed in target carriages. Portable paper targets may be positioned between the protective berm and 500 yard line with approval of Range Control. Use of steel targets required approval of Range Control.

16. Glass targets are authorized with the following restrictions:

a. All glass fragments/spalling will be completely removed from the range upon completion of training. This can be done by utilizing drop cloths/sheets.

b. For angled glass shots, the target will be positioned so that the gun-target line (the shot) is oriented straight down range.

c. Glass targets will be treated as steel targets in accordance with this SOP and SOUM 2-02, however, glass is authorized for .50 cal ammunition except for MK 211 A606.

17. Automatic fire is not authorized on Range 4.

18. When recreational fire is being conducted, only weapons with a distance x (maximum range) of 6100m (.50cal ball) or less will be fired.

19 When rifle team training or competition matches are being conducted, and specialized calibers below .50 cal are being used, a .50 cal ball SDZ (Dist X 6100m) will be utilized.

20. For the Interservice Opening Shot, all procedures will be in accordance with the Interservice Rifle Match Opening Shot Ceremony Certification dated 01 Jul 2010. It is included as part of the WTBN Range 4 certification.

21. **PIT SENTRY SYSTEM:** In the event of an incident in the Pits involving injury, death or damage to Government Property, individuals from Range Management Branch (RMB) will be dispatched to retrieve/download the video of the incident captured by the Pit Sentry System. This video will be transported back to RMB and kept inside the Range Control Facility (RCF).

22. Units that have requested contractor support (i.e., automated targets, PITS targets, battlefield effects simulators, etc.) that are not present on the specified range within 1 hour of the requested time and have not contacted RMB/TSCQ will forfeit all contracted support for the day.

23. Units that have occupied a range with approved contractor support (i.e., automated targets, PITS targets, battlefield effects simulators, etc.) and that have not begun to use that support within 2 hours of the requested hour of operation will forfeit all contracted support for the day.

24. Units that are training with contractor support (i.e., automated targets, PITS targets, battlefield effects simulators, etc.) that place themselves voluntary into check fire for 2 hours during the approved support operational hours will forfeit all support for the day.

NOTE: Units that encounter situations where contractor support (i.e., automated targets, PITS targets, battlefield effects simulators, etc.) is delayed or interrupted by circumstances beyond the control of the requesting unit (i.e., RMB directed check fire, ASP support, MEDEVAC, etc.) must contact RMB/TSCQ in order to arrange continued support within the scope of the contract and available assets.

APPLICABLE MAP SHEET. All grid coordinates listed in this order apply to the Quantico Military Installation Map V734S Edition 3-NGA 1:50000.

9. If the RCF cannot reach a unit within the RTA via primary communication, the unit will be contacted via the secondary means of communication.

10. Upon loss of primary communication the OIC/RSO will initiate a "check fire"/cease training status and will contact the RCF via secondary communication. This communication will be maintained while primary communication is being restored. Units may only resume firing/training once primary communication has been re-established and clearance is granted by the RCF.

INJURY CLASSIFICATIONS:

Injuries are classified into the following categories in order to aid in casualty evacuation from the RTA.

1. ROUTINE. Routine injuries are those injuries that are not threatening to life, limb or eyesight; and conditions or illnesses treatable by medication or procedures available at the base medical facilities.

2. PRIORITY. Priority injuries are those injuries that require immediate medical attention but are not threatening to life, limb, or eyesight if treated promptly.

3. URGENT. Urgent injuries are severe injuries that are threatening to life, limb, or eyesight and require immediate medical attention.

4. MASS CASUALTY. A mass casualty is a series of injuries with multiple priority and urgent medical patients.

MEDICAL EVACUATION (MEDEVAC) PROCEDURES:

1. Injury occurs.
2. Range immediately cease-fires.
3. Range notifies S-3/OOD of injury
4. S-3/OOD dispatches corpsman
5. Medical support evaluates/treats injured personnel.
6. Range radio operator/OIC notifies the RCF of the injury, stating briefly what happened, the extent of the injury and what type of MEDEVAC transportation needed (ground/air).
7. Maintain constant radio contact with Range Control and await further instructions.

*Minor injuries and illnesses requiring routine field medical services need not be reported to RMB but should be reported in unit training logs.