

## RANGE 14D

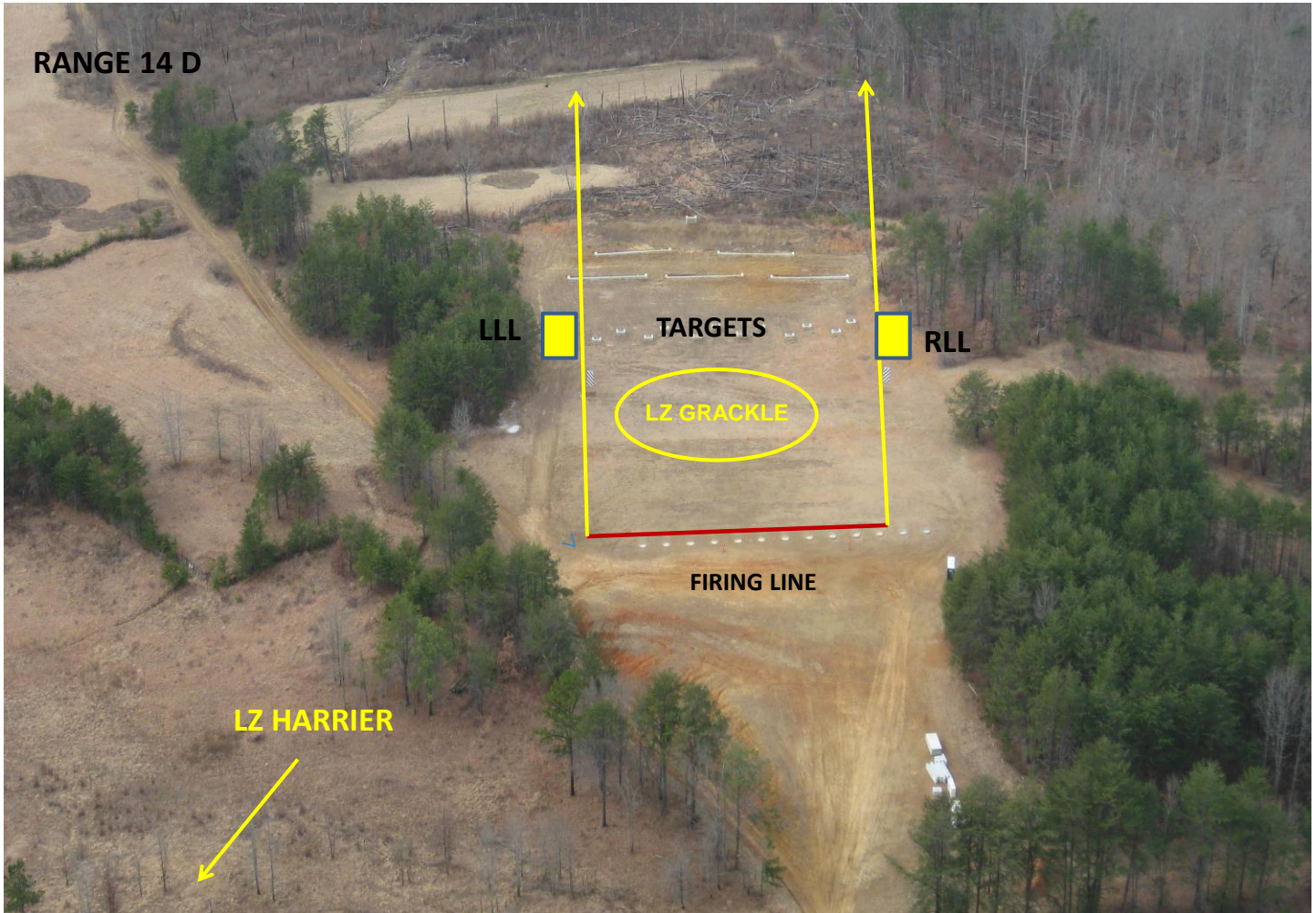
### RANGE DESCRIPTION

Range 14D is an active Squad Ambush Range located at Grid 87507350. It is accessible from route MCB 1. There are 13 firing points on Range 14D.

Primary Use: Primary Use: Small arms ambush, BZO

Alternate Uses: Small arms firing

Max firing distance: 120M



### WEAPONS ACCOMMODATED:

- Service Rifle
- Light and Medium Machine Guns
- Shotgun
- Pistol
- Approved Foreign Weapons
- Grenade launcher (for illum and TP rounds)
- AT-4 (9mm trainer rounds)

**AMMUNITION AUTHORIZED:**

- Pistol (All)
- 5.56mm (All)
- Shotgun
- 7.62mm (Link)
- Approved Foreign Ammunition (Up to 7.62mm ball calibers)
- 40mm illumination and training grenades
- AT-4 (9mm trainer rounds)

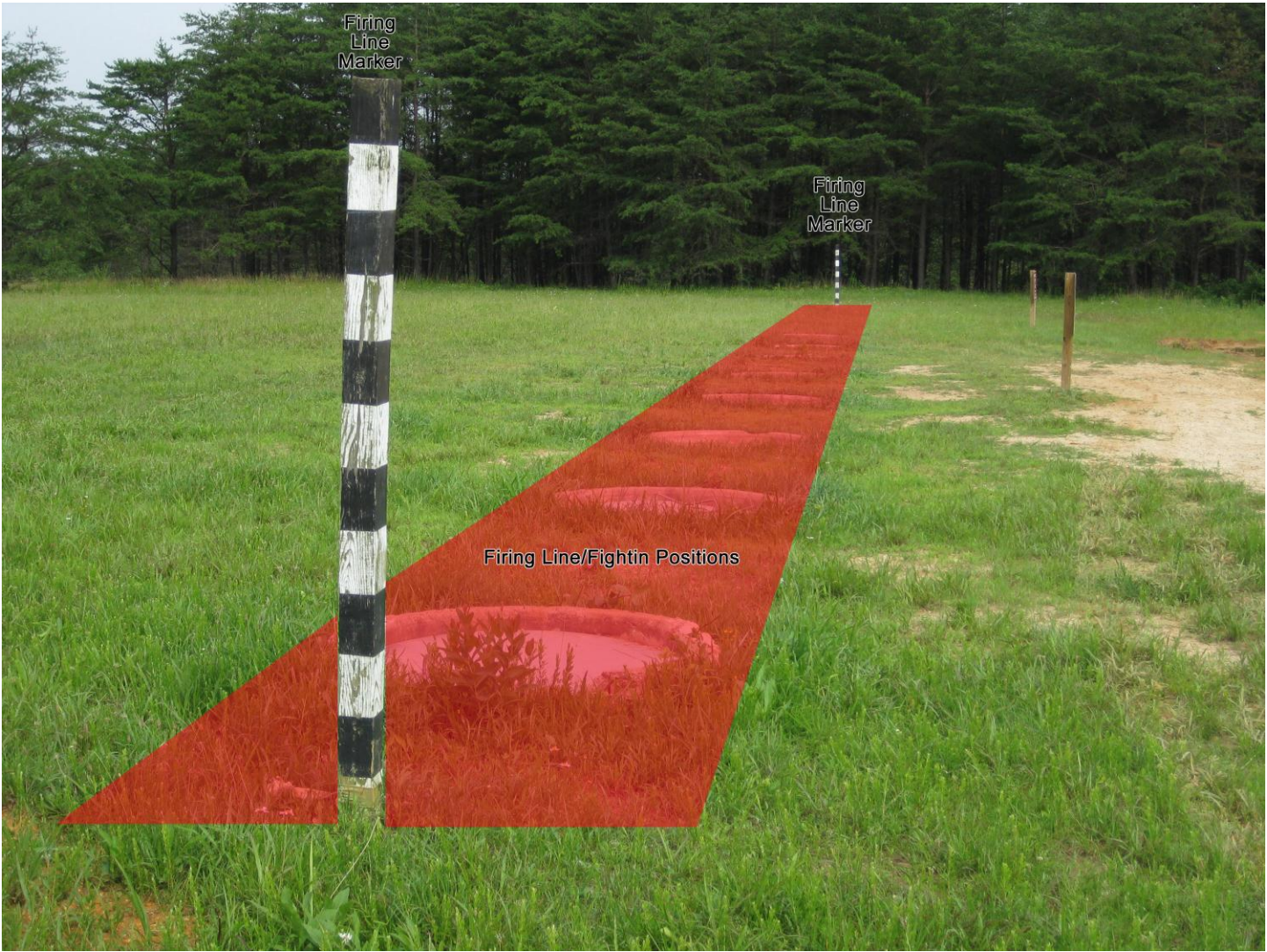
**TARGETS/SIMULATORS/DEVICES:**

- Paper, plastic or wood and provided by user.
- Approved ballistic steel targets are authorized.
- Steel targets will not be engaged closer than 100m with 5.56mm or 7.62mm.
- Targets must be placed so that impacts will land within lateral limit markers.
- Individual battery-operated RETS targets with SACON protective walls.
- RETS moving targets with SACON protective walls.
- RETS targets inside SACON bunkers.

Contact Training Support Section (TSS) at (703)784-4492 for other Targetry

**PRIMARY DIRECTION OF FIRE.** West

**R14D FIRING LINE**



R14D RIGHT LAT LIMIT



R14D LEFT LAT LIMIT



R14D CENTER



**R14D COFFIN TARGETS**



**R14D MOVERS AND BUNKER**



**R14D BUNKER**



## RANGE USE RESTRICTIONS/COMMENTS

1. Only weapons and ammunition listed in this document will be fired on this range.
2. The OIC and RSO must be present during firing.
3. All range regulations and SOP's will be strictly adhered to.
4. Ensure range flags are posted, ear protection is worn (eye protection for steel), safety brief is given, Range Control contacted and all fires are directed between the left and right lateral limits markers (black and white striped).
5. Firing from the berm is permitted as long as munitions impact in between the lateral limit markers that are downrange.
6. Targets are limited to wood, paper, plastic, approved ballistic steel and the automated targets. No other targets will be used such as bowling pins, clay targets, cans, etc. **No targets will be placed where the SACON protective walls become backstops.**
7. Ballistic Steel targets are authorized if placed in accordance with the steel target placement diagram in this SOP. Steel targets will not be placed where bullet splash will come in contact with automated target systems. **Steel targets will not be engaged closer than 100 meters with 5.56mm or 7.62mm.**
8. All brass, trash, targetry and materials will be removed completely at the end of training by the using unit. This includes any materials used to place targets on.
9. Firing on the move is authorized on the left side of the range and will be in accordance with the Range SOP.  
Units that do not occupy their range within two hours of their scheduled occupy time will lose the use of that range for that day.
10. Units that have requested contractor support (i.e., automated targets, PITS targets, battlefield effects simulators, etc.) that are not present on the specified range within 1 hour of the requested time and have not contacted RMB/TSCQ will forfeit all contracted support for the day.
11. Units that have occupied a range with approved contractor support (i.e., automated targets, PITS targets, battlefield effects simulators, etc.) and that have not begun to use that support within 2 hours of the requested hour of operation will forfeit all contracted support for the day.
12. Units that are training with contractor support (i.e., automated targets, PITS targets, battlefield effects simulators, etc.) that place

themselves voluntary into check fire for 2 hours during the approved support operational hours will forfeit all support for the day.

NOTE: Units that encounter situations where contractor support (i.e., automated targets, PITS targets, battlefield effects simulators, etc.) is delayed or interrupted by circumstances beyond the control of the requesting unit (i.e., RMB directed check fire, ASP support, MEDEVAC, etc.) must contact RMB/TSCQ in order to arrange continued support within the scope of the contract and available assets.

13. DODIC AA11 7.62mm Special Ball cannot be fired on Range 14D.

14. Range 14D has (12) fighting hole firing positions. All covers to these fighting holes must be returned to their original position after training has concluded.

**LASERS AUTHORIZED:** Class 1 - 3R. Standard aiming devices mounted on approved service rifles. Class 3B can be fired if safety filter is on, reducing power output.

**APPLICABLE MAP SHEET.** All grid coordinates listed in this order apply to the Quantico Military Installation Map V834S Edition 2-NIMA 1:25000.

**FACILITIES**

Towers: 0  
Sheds: 0  
Ammo Breakdown: 1  
Parking: Limited  
Description of Other Structures: None

**UTILITIES AVAILABLE**

Electricity: None  
Lights: None  
Water System: None

**INSTALLED COMMUNICATIONS.** None

<b><u>Nearest MEDEVAC LZ</u></b>	<b><u>MILES</u></b>	<b><u>GRID</u></b>
LZ Grackle	0.0	87507340

**Directions to MEDEVAC LZ:** The LZ is on the range itself.

<b><u>MEASURED DISTANCES</u></b>	<b><u>MILES</u></b>	<b><u>MGRS</u></b>
MT (POL) TBS Distance	8.3	87106390
Rations Distance	8.1	87406374
To ASP Distance	6.3	91256605
EMT/Fire (Fire House 3)	4.7	89606410

**AVAILABLE DAYS/HOUR** 0500-2200. All other times require airspace requests.



## **AREA SUITABILITY**

<u>Unit Type</u>	<u>Unit Size</u>	<u>Number of Units</u>
Combat Arms	Squad	1

## **GEOGRAPHICAL DATA**

Access Routes: MCB 1  
Soil Type: Dirt/clay  
Terrain Type: Level  
Vegetation: Grass/Woodland

## **COMMUNICATION REQUIREMENTS:**

1. A radio check is required immediately upon occupying any portion of the RTA, every 30 minutes in a live fire status and every 3 hours in a non-live fire status.
2. The Range Control Facility (RCF) Fire Desk Net Control call sign is "Range Control". Your call sign is "Range XX" (name of range, training area or facility unit is occupying).
3. The primary RCF Fire Desk Net Control frequencies are: ELMR talk group "RC Safety" (ground) and 323.7 AM UHF (air).
4. The secondary RCF Fire Desk Net Control is telephone, numbers: 703-784-5321 or 5322.
5. OIC/RSO will monitor the RCF primary and secondary Safety Nets at all times. Instant communication is required.
6. Any unit with organic ELMR radios will have their ELMR radios programmed with the "RC Safety" talk group and use those radios as their primary means of communication within the RTA.
7. Units without organic ELMR assets will be issued ELMR radios from RMB upon check-in.
8. Approved Non-ELMR radios are only authorized for internal communication (ground).
9. If the RCF cannot reach a unit within the RTA via primary communication, the unit will be contacted via the secondary means of communication.
10. Upon loss of primary communication the OIC/RSO will initiate a "check fire"/cease training status and will contact the RCF via secondary communication. This communication will be maintained while primary communication is being restored. Units may only resume firing/training once primary communication has been re-established and clearance is granted by the RCF.

## **INJURY CLASSIFICATIONS:**

Injuries are classified into the following categories in order to aid in casualty evacuation from the RTA.

1. ROUTINE. Routine injuries are those injuries that are not threatening to life, limb or eyesight; and conditions or illnesses treatable by medication or procedures available at the base medical facilities.
2. PRIORITY. Priority injuries are those injuries that require immediate medical attention but are not threatening to life, limb, or eyesight if treated promptly.
3. URGENT. Urgent injuries are severe injuries that are threatening to life, limb, or eyesight and require immediate medical attention.
4. MASS CASUALTY. A mass casualty is a series of injuries with multiple priority and urgent medical patients.

## **MEDICAL EVACUATION (MEDEVAC) PROCEDURES:**

1. Injury occurs.
2. Range immediately cease-fires.
3. Medical support evaluates/treats injured personnel.
4. Range OIC/RSO notifies the RCF of the injury, is the victim conscious/unconscious and what type of MEDEVAC transportation is requested (ground/air).
5. The OIC/RSO must maintain constant radio contact with Range Control and awaits further instructions.

\*Minor injuries and illnesses not requiring medical services need not be reported to the RCF but should be reported in unit training logs.