

Port Definition Issues

July 15, 2016



- Build a framework so discussions can be built on a **shared, common vocabulary**
- Describe difficulties in obtaining **nationally consistent port measures**
- Identify **potential data sources** for developing list of ports to be included in effort

- **What** are we measuring?
- **Where** are we measuring it?

“The Director shall establish, on behalf of the Secretary, a port performance statistics program to provide nationally consistent measures of performance of, at a minimum—

- (1) the Nation's top 25 ports by **tonnage**;
- (2) the Nation's top 25 ports by **20-foot equivalent unit**; and
- (3) the Nation's top 25 ports by **dry bulk**.

Tonnage

- What does it include?
 - Everything, even the shipping containers themselves
- Metric vs Short
 - 1,000 kg vs 2,000 lbs.

Containers

- Counts vs TEUs vs FEUs
- Full vs Empty
- Transshipment
- Cross Border

Port of Los Angeles



Dry Bulk

- As opposed to liquid bulk or break bulk
- Usually “dropped” cargo
 - Bauxite, cement, coal, chemicals, iron, grains
- Unpacked and Homogenous
- Measure by Weight?



Borax at the
Port of Los Angeles



Grain at the
Port of Seattle

Ports vary greatly in size

- a single wharf or quay
- collection of terminals
- multi-mile stretches along a river

Jurisdictional vs. Geographic Definition

- Port Authorities focused on terminals under their jurisdiction
- Variation in legal status
 - Public vs Private vs Joint
 - Complicates data availability
- Other agencies may group data based on their own geographic boundaries
 - USACE Waterborne Commerce Statistics Districts

A Port is a Port, right?



Port of Los Angeles and
Port of Long Beach

Port of New York
and New Jersey



A Port is a Port, right?

Port Activities Vary

- Dry Bulk
- Liquid Bulk
- Break Bulk
- Project Cargo
- Container
- Ro-Ro
- Ferry/Cruise



Port of Houston



Port of Baltimore

Port Connectivity Varies

- Coastal
- Great Lake
- Inland

- Road Access
- Rail Access
- Barge Access
- Pipelines

Other Factors

- Aggregating terminal data and metrics
 - Impact of inactive terminals
- International vs. Regional trade
- Seasonal trade

With so many factors, perhaps best not to reinvent the wheel and instead use an existing list:

- Based on nationally consistent source
- Data in the public domain or a Federal source
- Potentially port level detail

There is no one data source that provides all the answers

- U.S. Army Corps of Engineers
 - Waterborne Commerce Statistics → Customs Districts
- U.S. Census Bureau
 - USA Trade Online → Census Districts
- Coast Guard
 - Automatic Identification System
- Maritime Administration
- American Association of Port Authorities

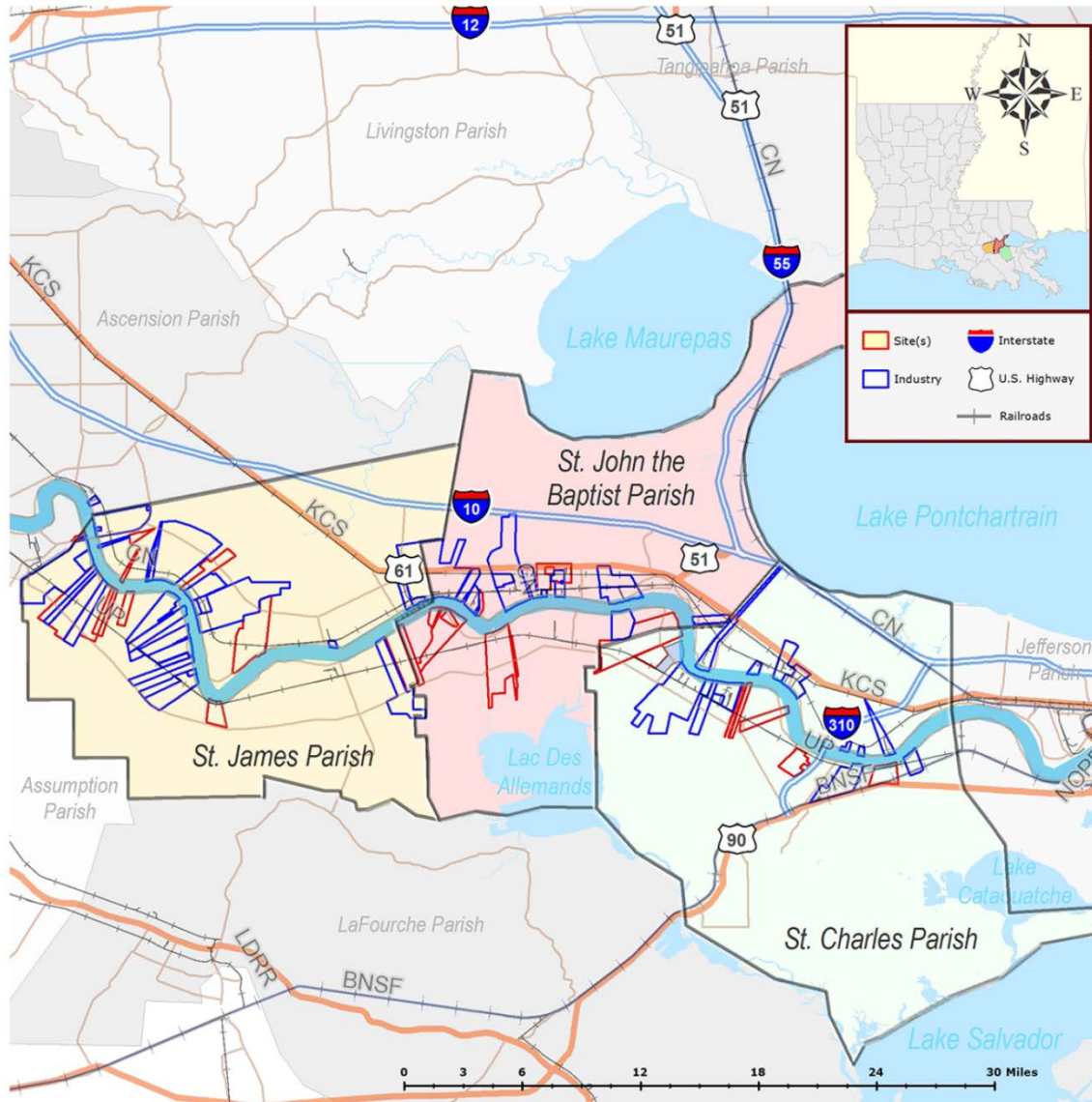
Total Tonnage

Valdez, Alaska, #25 in Tons



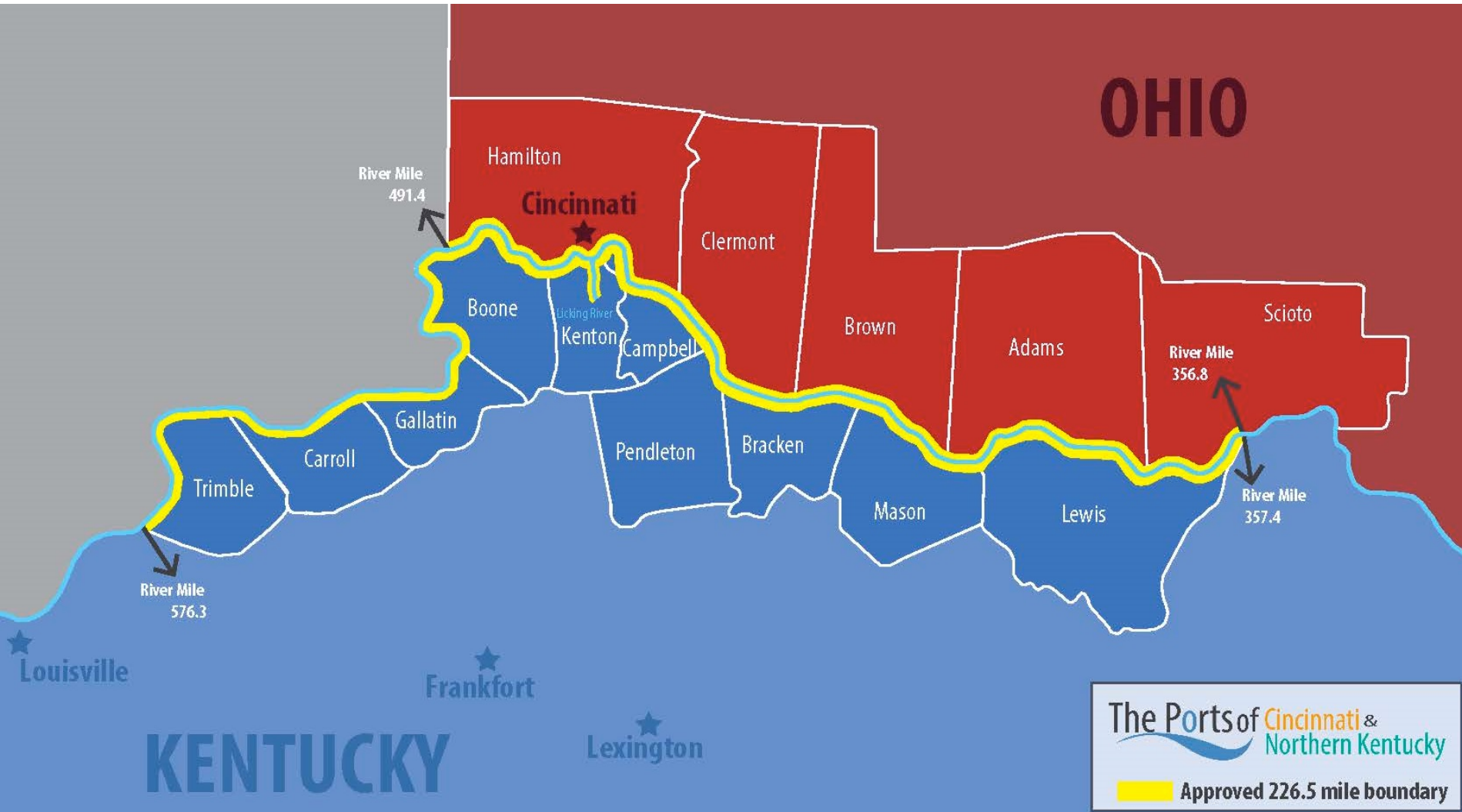
Total Tonnage

Port of South Louisiana, Louisiana, #1 in Tons



Total Tonnage

Ports of Cincinnati and Northern Kentucky, #13 in Tons



Approved by the US Army Corps of Engineers in 2015

Container Terminals

San Diego, #25 in TEUs



Container Terminals

Los Angeles, #1 in TEUs



Dry Bulk

Lower Mississippi River – MVN, #1 in Tons



Port of
South Louisiana

Includes the Ports of South Louisiana, Plaquemines, Baton Rouge, and New Orleans

- Other **data sets** we should be considering?
- Is there consensus on “**what is a port**”?
- Is there consensus on a definition of **what is included for each category**?
 - Tonnage
 - Containers
 - Dry Bulk

Dry Bulk Goods

- Metals & Ores
 - bauxite/alumina
 - coals
 - iron ore
 - ferroalloys
 - scrap metal
 - Taconite
- Chemicals
 - petroleum coke
 - fertilizer
 - phosphates
 - plastic pellets
 - resin powder
 - synthetic fiber
- Minerals
 - sand & gravel
 - copper
 - limestone
 - salt
 - sulphur
- Edible Agricultural
 - alfalfa pellets
 - livestock feed
 - flour
 - peanuts
 - raw or refined sugar
 - seeds
 - tapioca
- Grains
 - wheat
 - maize
 - rice
 - barley
 - oats
 - rye
 - sorghum
 - soybeans
- Cement
- Wood chips