



FEMA

Hazus 3.2 Online Download Tutorial

www.fema.gov/hazus

RiskMAP

Increasing Resilience Together



Purpose of this Presentation

- The purpose of this presentation is to provide step-by-step instructions explaining how to download and extract the Hazus software and state datasets
- Hazus is a nationally applicable standardized methodology that contains models for estimating potential losses from earthquakes, floods, and hurricanes. Hazus uses Geographic Information Systems (GIS) technology to estimate physical, economic, and social impacts of disasters. It graphically illustrates the limits of identified high-risk locations due to [earthquakes](#), [hurricanes](#), and [floods](#)

Hazus For International Users

- International users may download the Hazus 3.2 software, but not the U.S. state or territory datasets. International users who require technical assistance downloading the software may email the FEMA Map Information eXchange (FMIX) at FEMAMapSpecialist@riskmapcds.com

Hazus 3.2 System Requirements

- Hardware speed: 2.2 GHz dual core or higher, 2GB or higher of memory/RAM
- Computer storage disk space: 10 GB of disk space is needed to store one multi-hazard large urban study region; inventory data size varies by state (for the entire U.S. – 70 GB is needed)
- Video/graphics adapter: 24-bit capable video card with a minimum of 128 MB memory; a resolution of 1078 by 768 or higher is recommended
- Supporting software: Microsoft Windows 10 Professional, Windows 8.1 Professional, and Windows 7 Professional (64-bit only) 64-bit) or Windows 8 and 8.1 – only U.S. English versions are supported. Esri ArcGIS 10.4 is required

MSC

Hazus software is available online and can be downloaded through the FEMA Flood Map Service Center (MSC). To get started, go to <http://msc.fema.gov>



Navigation

Search

Languages

- MSC Home
- MSC Search by Address
- MSC Search All Products
- ▼ MSC Products and Tools
 - Hazus
 - LOMC Batch Files
 - Product Availability
- MSC Frequently Asked Questions (FAQs)
- MSC Email Subscriptions
- Contact MSC Help

FEMA Flood Map Service Center : Welcome!

Looking for a Flood Map? [?](#)

Enter an address, a place, or longitude/latitude coordinates:

Search

Looking for more than just a current flood map?

Visit [Search All Products](#) to access the full range of flood risk products for your community.



Select “Hazus” from the left navigation bar.

About Flood Map Service Center

The FEMA Flood Map Service Center (MSC) is the official public source for flood hazard information produced in support of the National Flood Insurance Program (NFIP). Use the MSC to find your official flood map, access a range of other flood hazard products, and take advantage of tools for better understanding flood risk.

Announcements

Website Update - On December 13th, changes to the Flood Map Service Center (MSC) incorporated the look and feel of the recently updated FEMA.gov.

Browser Configuration — To access all functionality of the MSC, Internet Explorer users should confirm [Compatibility View](#) is not enabled. In addition, users of Internet Explorer 9 and 10 should first take the following steps before using the MSC:

Download Hazus Software

To download Hazus, select “Hazus-MHApplication” under the “Download the Software” section of the page

HAZUS APPLICATION

- **Direct Download:** [Hazus-MH Application](#)
- **Managed Download:** Hazus-MH Application

Select “Hazus-MH Application” to start the download of Hazus

If you want to perform a Managed Download, you can check off the “Hazus-MHApplication” box here, select all of the state datasets you wish to download, and then continue by selecting “Start Managed Download” at the bottom of the page

Wisconsin		<input type="checkbox"/>
Wyoming		<input type="checkbox"/>
All States Part 1 (AL to MO)		<input type="checkbox"/>
All States Part 2 (MT to WY)		<input type="checkbox"/>

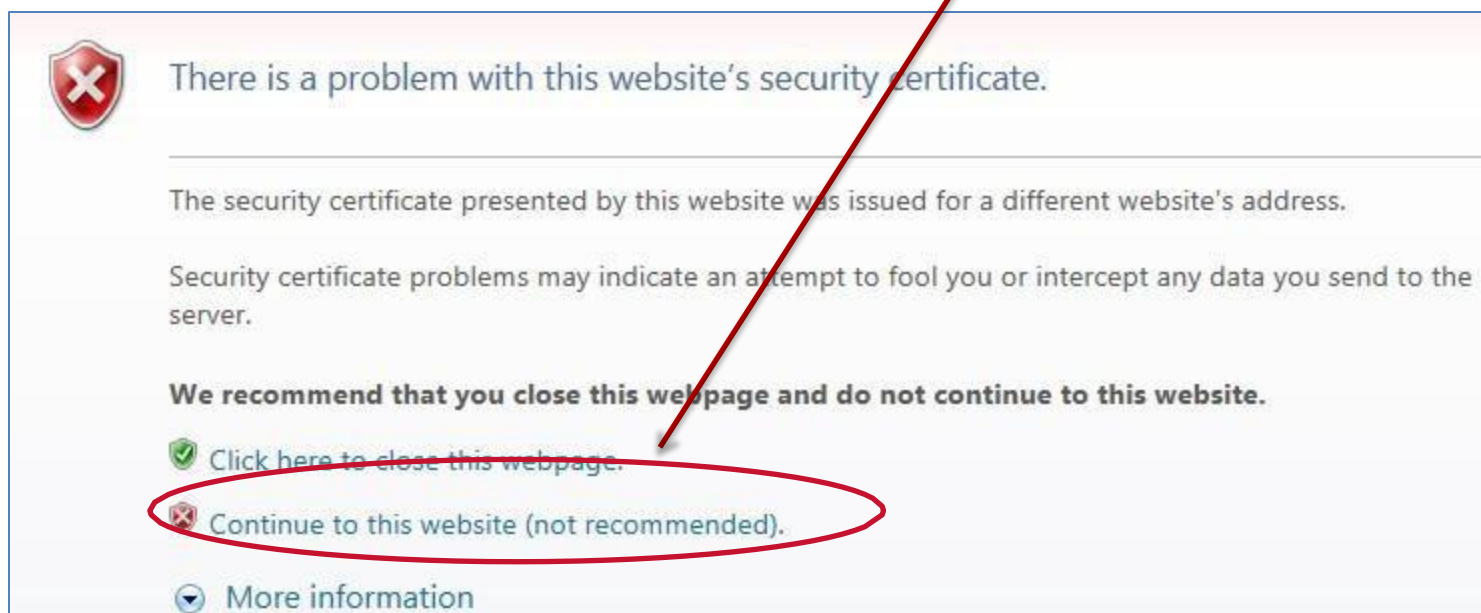
Start Managed Download

Direct vs. Managed Download

- **Direct Download**—select the download image to begin an HTTP download. Beneficial if you are not downloading many datasets or files
- **Managed Download**—check all the files you wish to download then select the "Start Managed Download" button. Beneficial if you are downloading many different state datasets at once

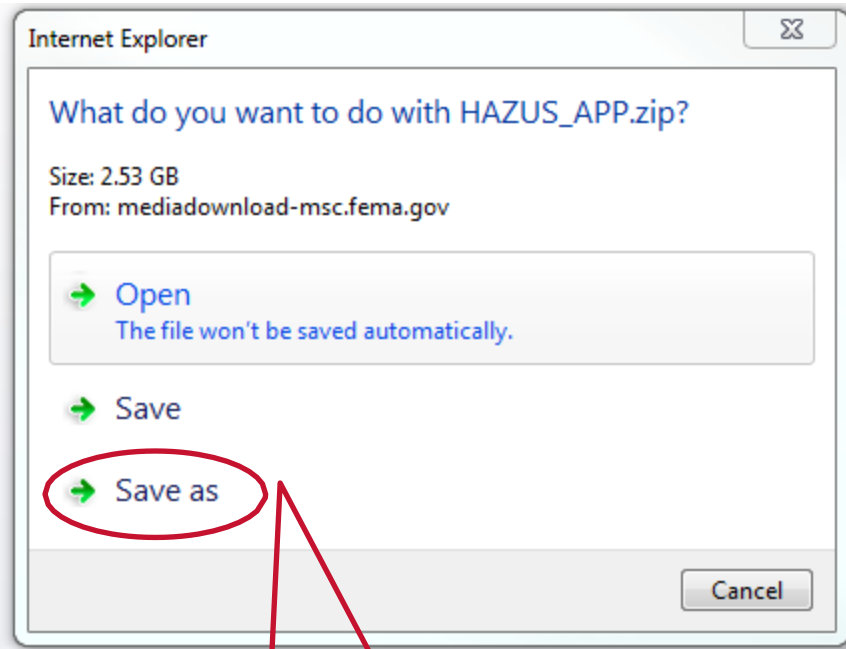
Download Hazus Software

If an error prompt stating that “There is a problem with this website’s security certificate” happens to appear, select ‘Continue to this website’ to proceed to the download



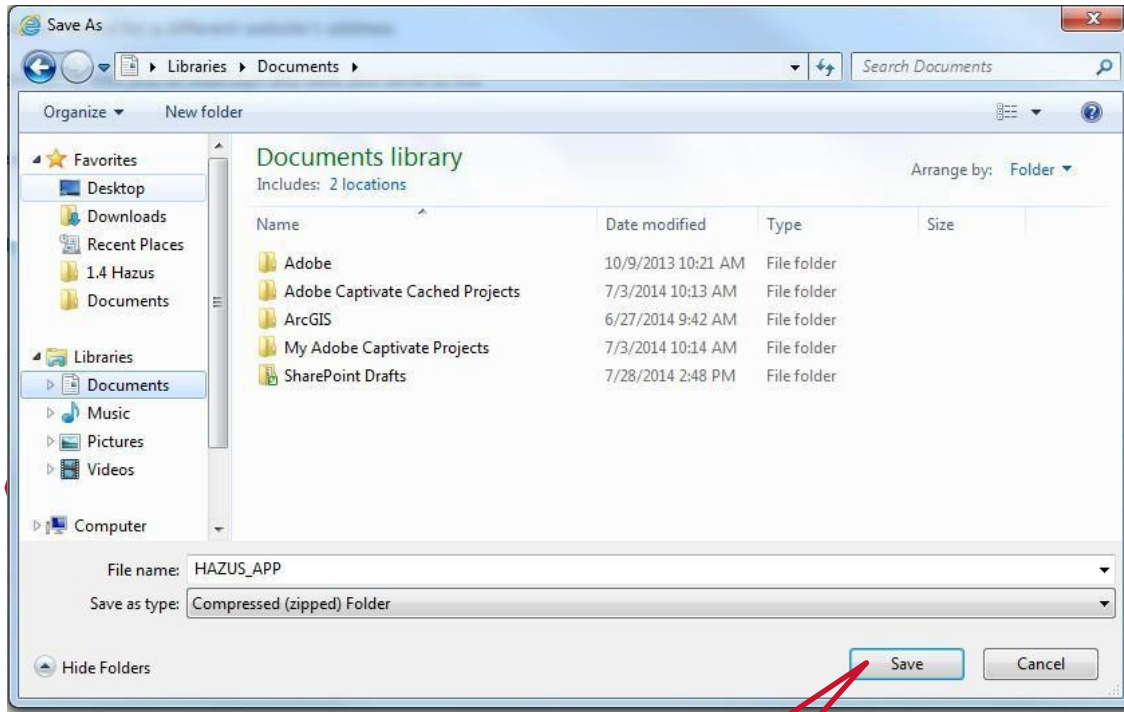
Download Hazus Software

- A pop-up box will appear
- Choose “Save As”



Select “Save as” to select a download location for the Hazus installation file

Download Hazus Software

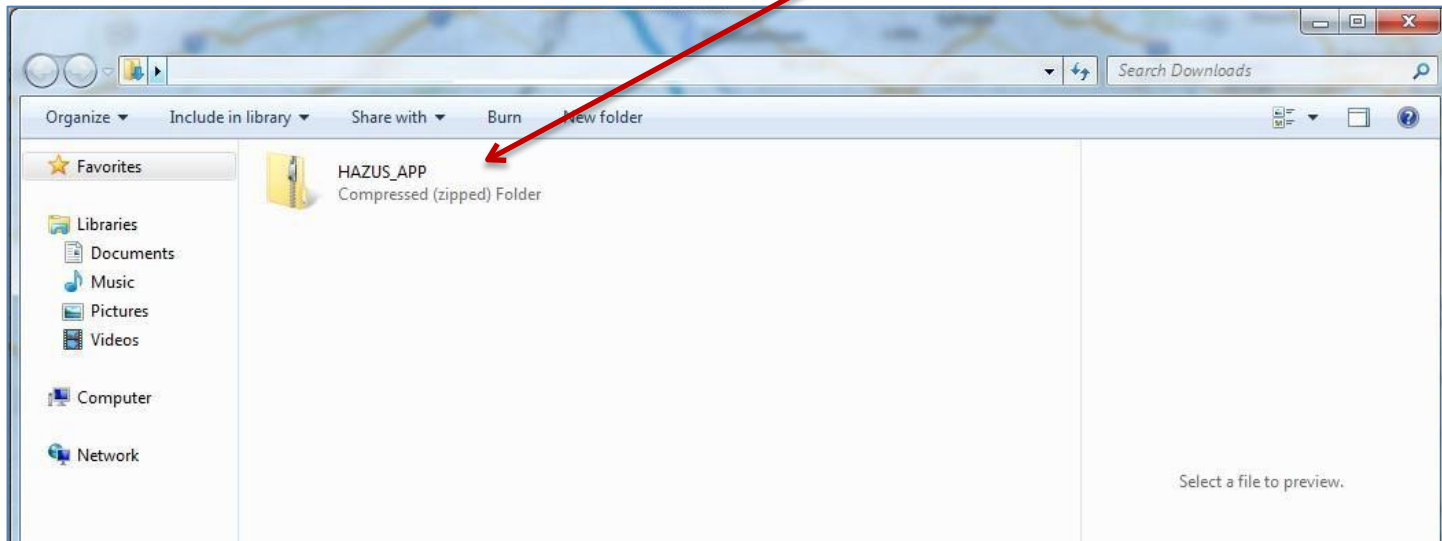


Once you have chosen a location to save the file, select “Save”

- Another pop up box will appear
- Choose where to save the data
- Navigate to the folder on your computer where you want Hazus and any datasets stored
- Select “Save” to begin download

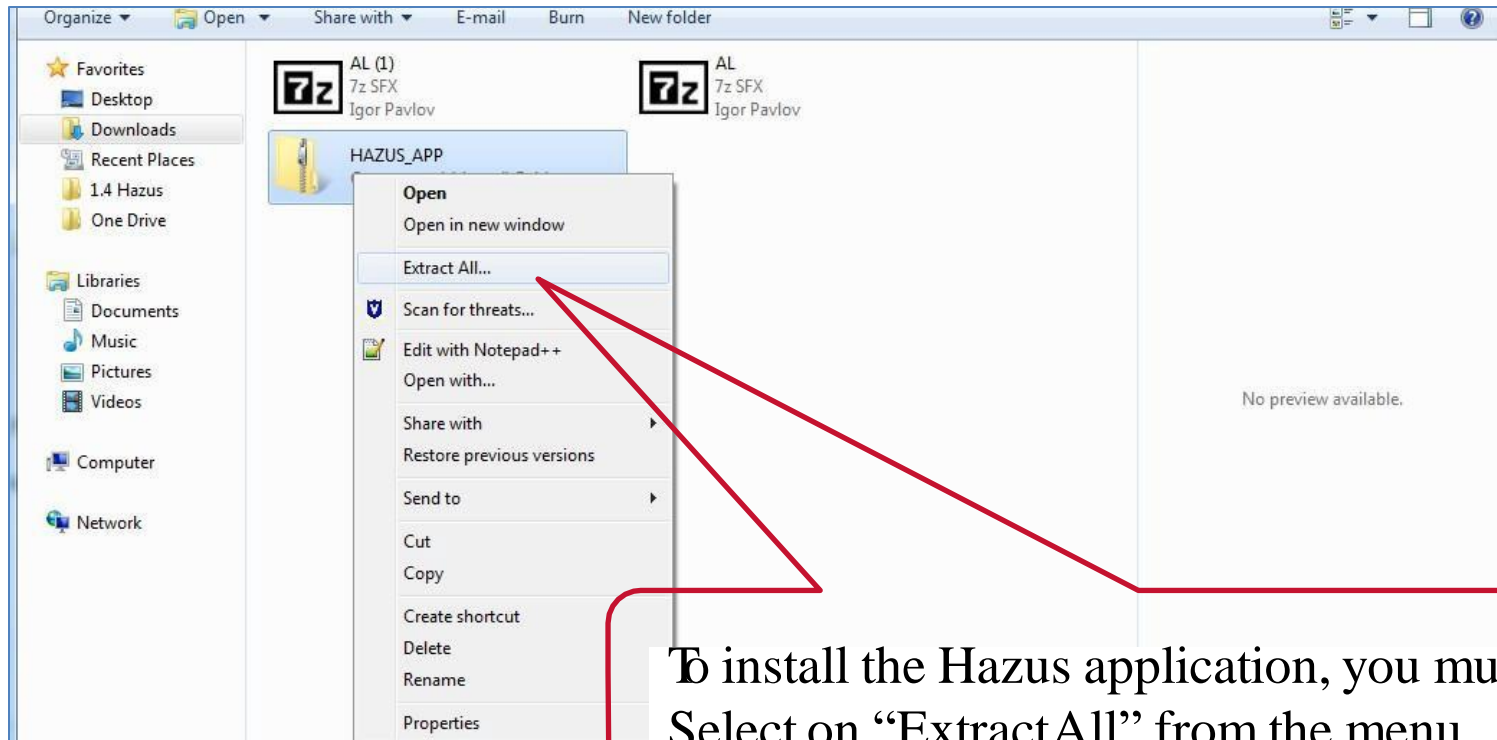
Download Hazus Software

Once download is complete, navigate to where the data is saved on your computer



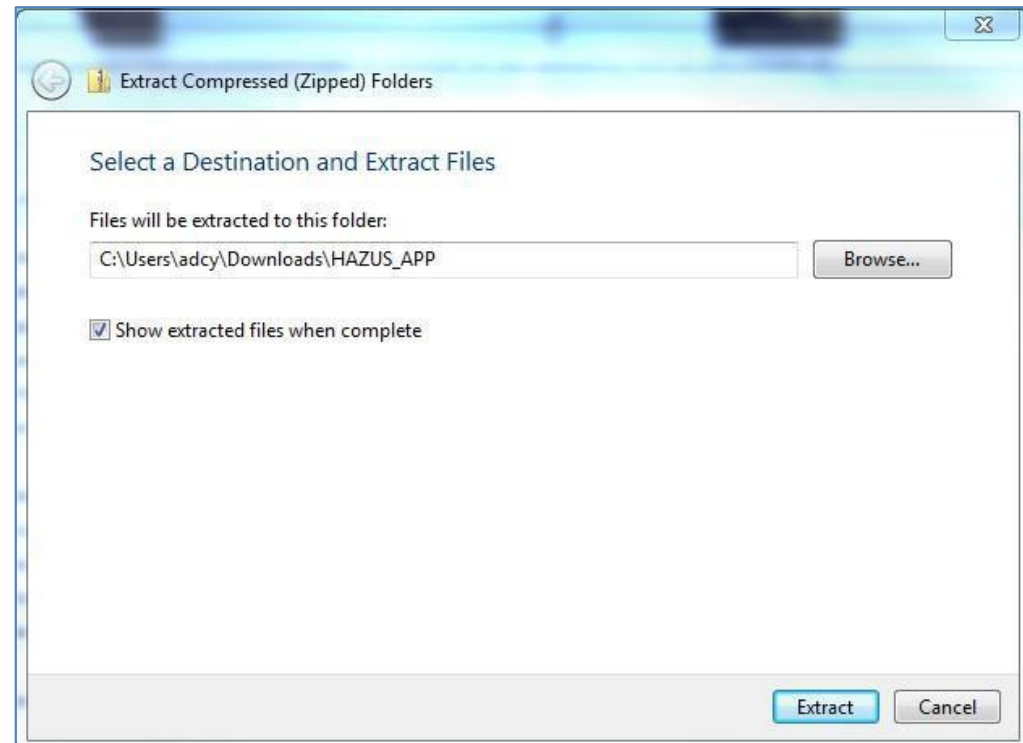
Download Hazus Software

- To access the installation files the downloaded zip file must be extracted. To do so right select the file and select “Extract All”



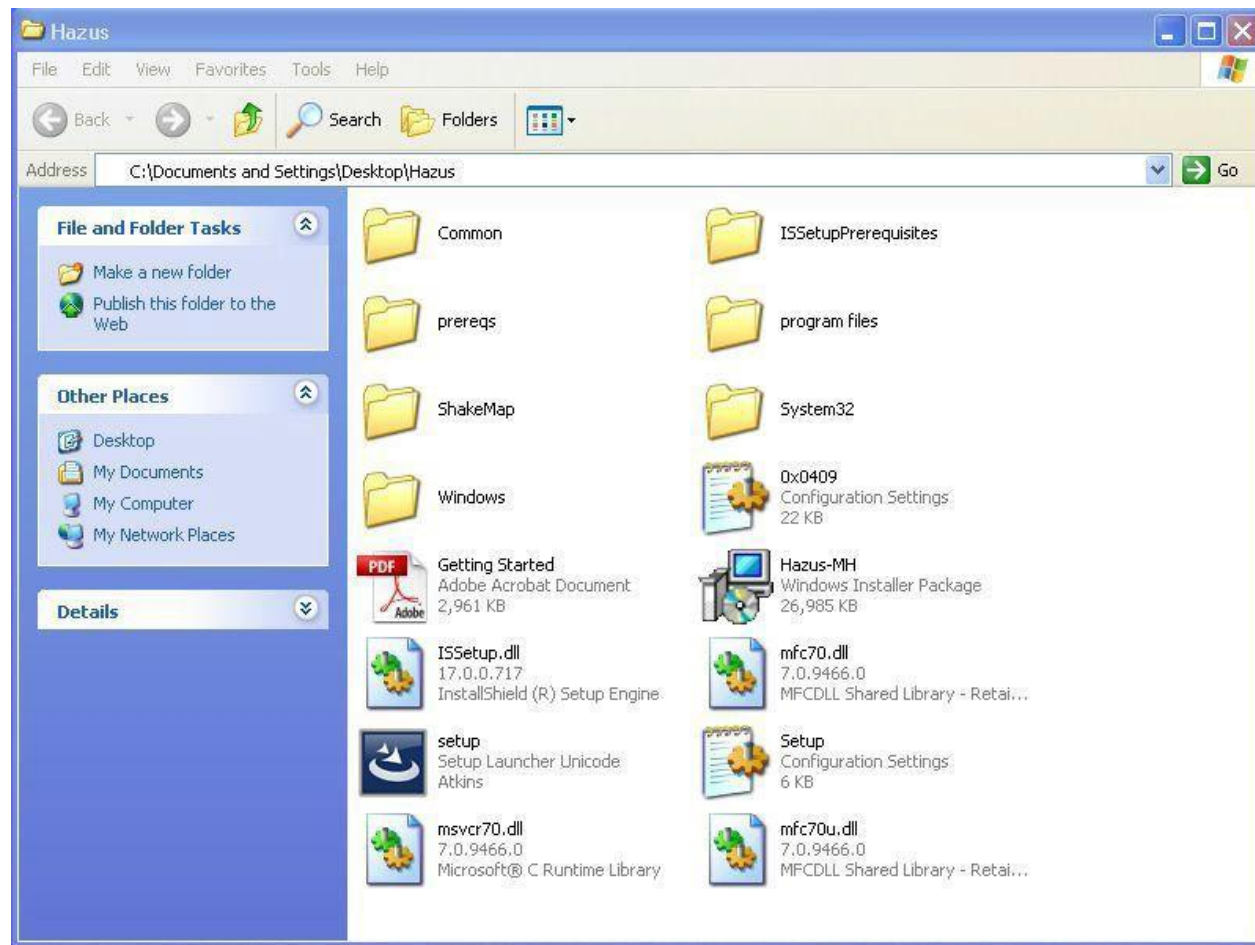
Download Hazus Software

- A new pop up box will appear
- Choose where on your computer you want to save the extracted data
- Select “Extract” when done
- Once the extraction process is complete, navigate to where you saved the data in order to access it



Download Hazus Software

- Congratulations!
Hazus is now downloaded to your computer



Install Aspera Connect

If Aspera Connect is not downloaded on your computer, the following screen will pop up at the top of the screen when attempting to download. **Note: You must scroll up manually to the top of the screen to see the notice.**



Navigation

Search

Languages

MSC Home

MSC Search by Address

MSC Search All Products

MSC Products and Tools

Hazus

LOMC Batch Files

Product Availability

MSC Frequently Asked Questions (FAQs)

MSC Email Subscriptions

> Expand All Sections

FEMA's Methodology for Estimating Potential Losses from Disasters

Hazus is a nationally applicable standardized methodology that contains **models for estimating potential losses from earthquakes, floods, and hurricanes**. Hazus uses **Geographic Information Systems (GIS)** technology to estimate physical, economic, and social impacts of disasters. It graphically illustrates the limits of identified high-risk locations due to [earthquake](#), [hurricane](#) and [floods](#). Users can then visualize the spatial relationships between populations and other more permanently fixed geographic assets or resources for the specific hazard being modeled, a crucial function in the pre-disaster planning process.

For more information about the Hazus program, please visit the [Hazus home page](#). From there, you can learn how to:

- Stay connected with the Hazus Community by joining your local [Hazus User Group](#)
- Sign up for [Hazus Training](#) from FEMA's Emergency Management Institute
- Find technical support at the [Hazus Help Desk](#)

> Hazus Modernization

Click here to download
Aspera Connect

Install Aspera Connect

You will see the below message reminding you to refresh the page after downloading the Aspera Connect software

Connect Aspera Connect is downloading. Install Connect and then refresh this page.

Navigation

Search

Languages

MSC Home

MSC Search by Address

MSC Search All Products

MSC Products and Tools

- Hazus
- LOMC Batch Files
- Product Availability

MSC Frequently Asked Questions (FAQs)

> Expand All Sections

FEMA's Methodology for Estimating Potential Losses from Disasters

Hazus is a nationally applicable standardized methodology that contains **models for estimating potential losses from earthquakes, floods, and hurricanes**. Hazus uses **Geographic Information Systems (GIS)** technology to estimate physical, economic, and social impacts of disasters. It graphically illustrates the limits of identified high-risk locations due to [earthquake](#), [hurricane](#) and [floods](#). Users can then visualize the spatial relationships between populations and other more permanently fixed geographic assets or resources for the specific hazard being modeled, a crucial function in the pre-disaster planning process.

For more information about the Hazus program, please visit the [Hazus home page](#). From there, you can learn how to:

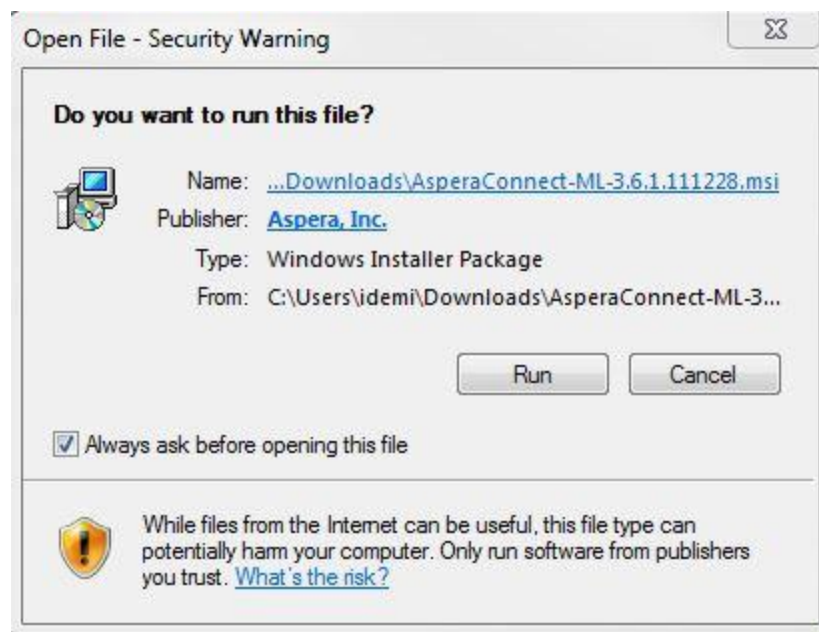
- Stay connected with the Hazus Community by joining your local [Hazus User Group](#)
- Sign up for [Hazus Training](#) from FEMA's Emergency Management Institute
- Find technical support at the [Hazus Help Desk](#)

You will see the download progress for the Aspera Connect software at the bottom of your browser; double-click after the download is complete to begin the installation process



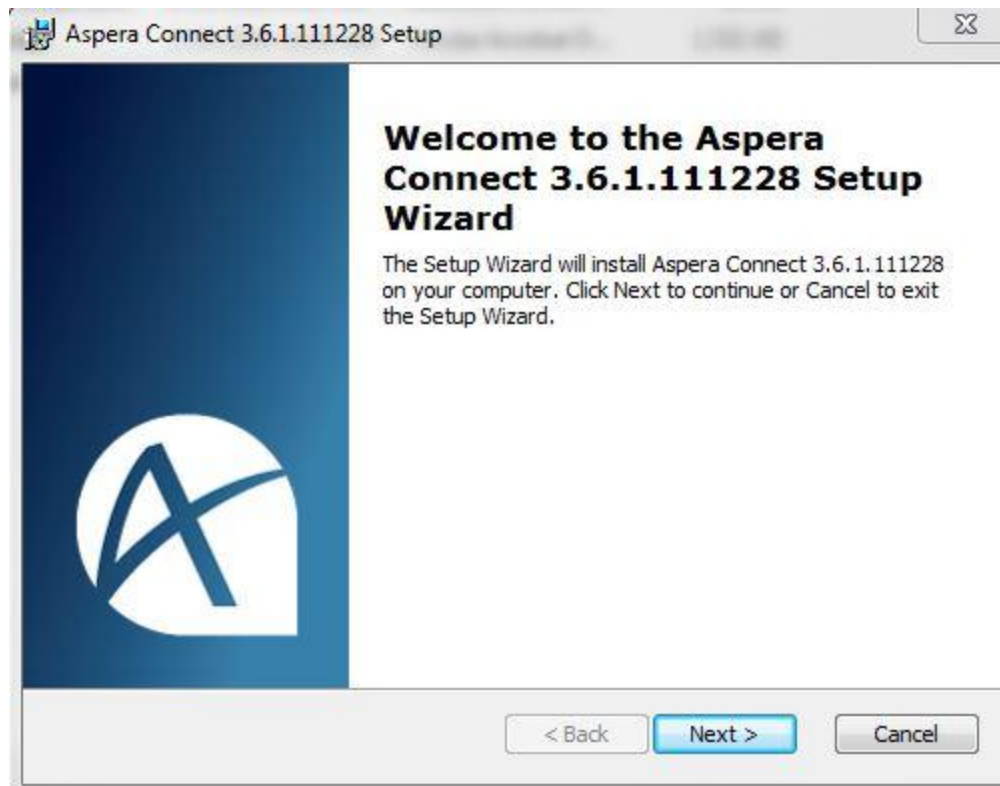
Install Aspera Connect

On the next pop up screen, it gives the option to Run, Save, or Cancel – Click “**Run**”



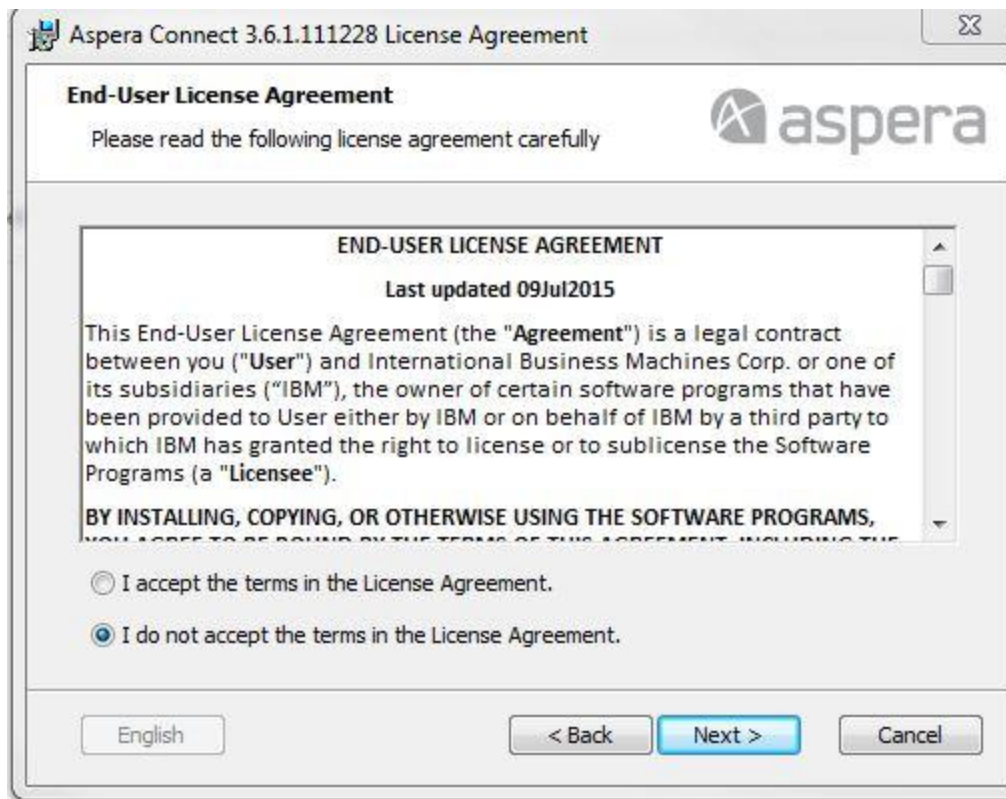
Install Aspera Connect

On the installation screen, click “**Next**”



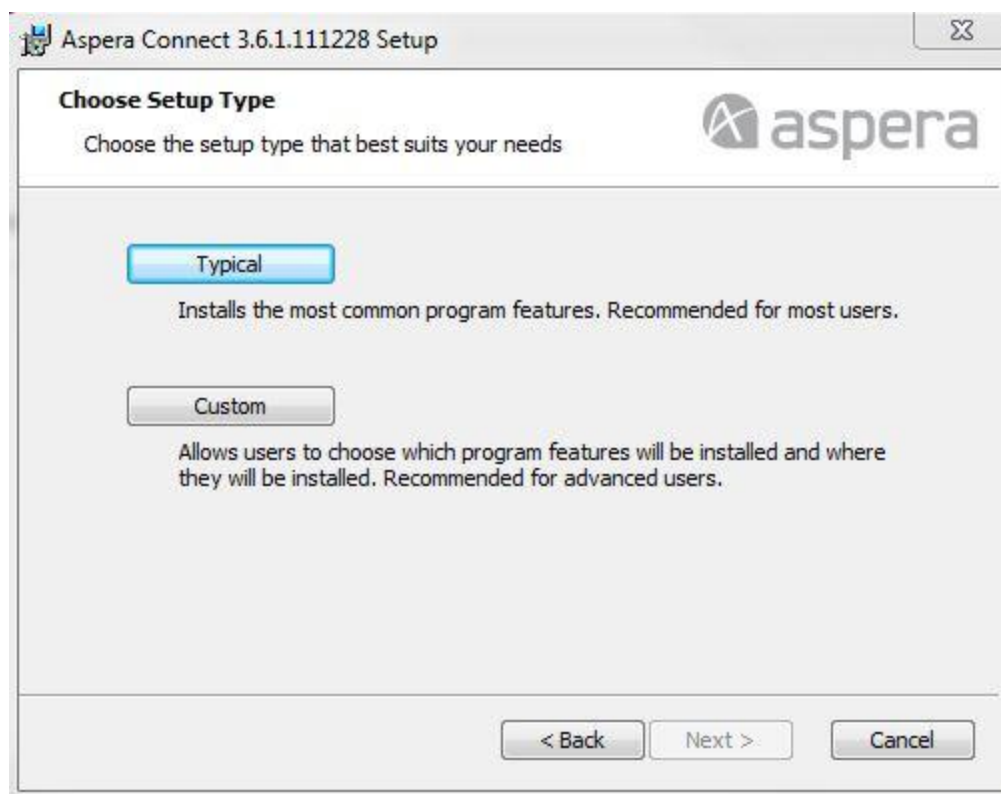
Install Aspera Connect

When the License Agreement appears, click **“I Agree”** and then **“Next”**



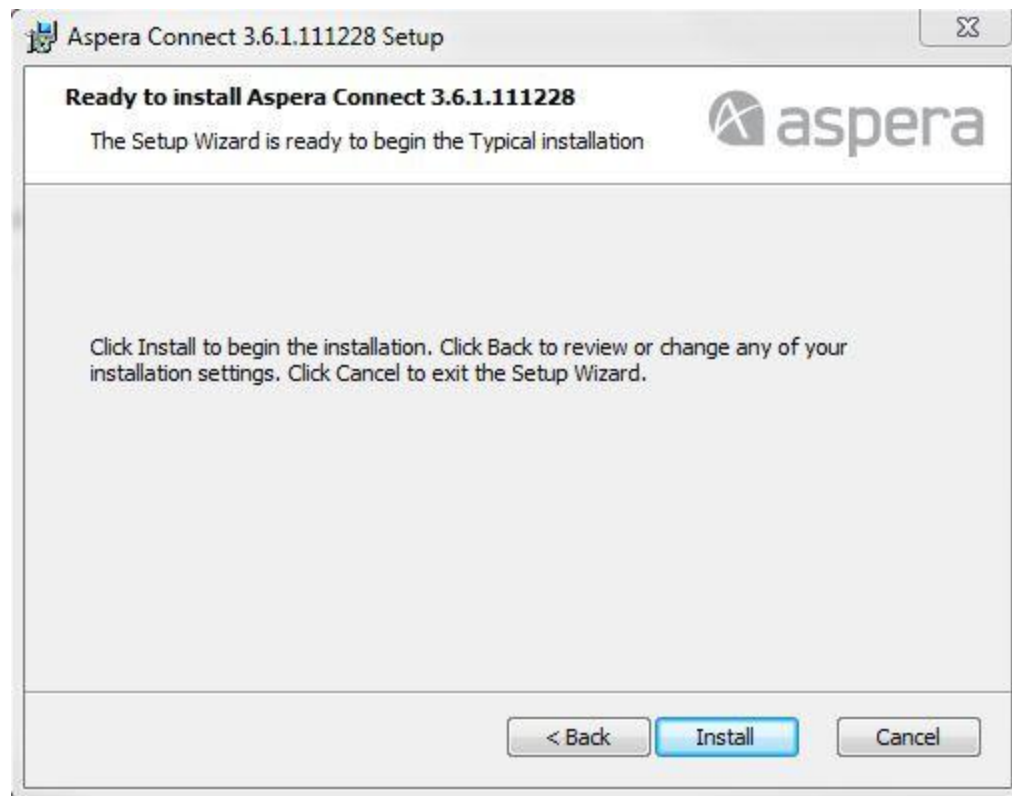
Install Aspera Connect

When choosing the setup type, click “**Typical**”



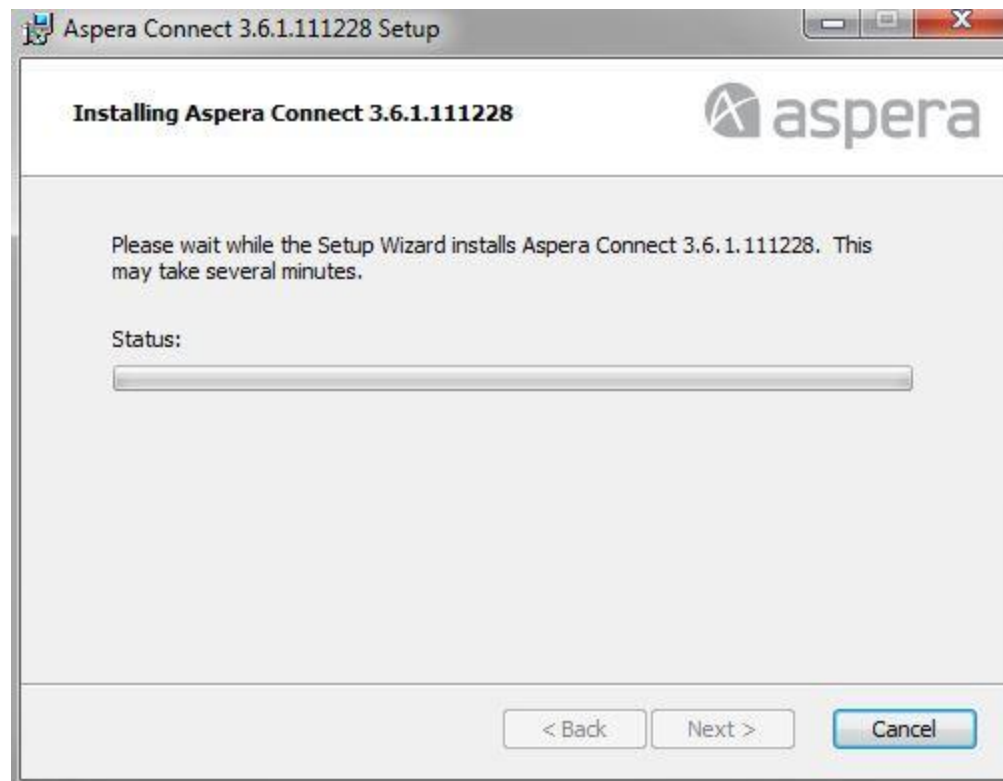
Install Aspera Connect

On the next screen, click “**Install**” to begin installation



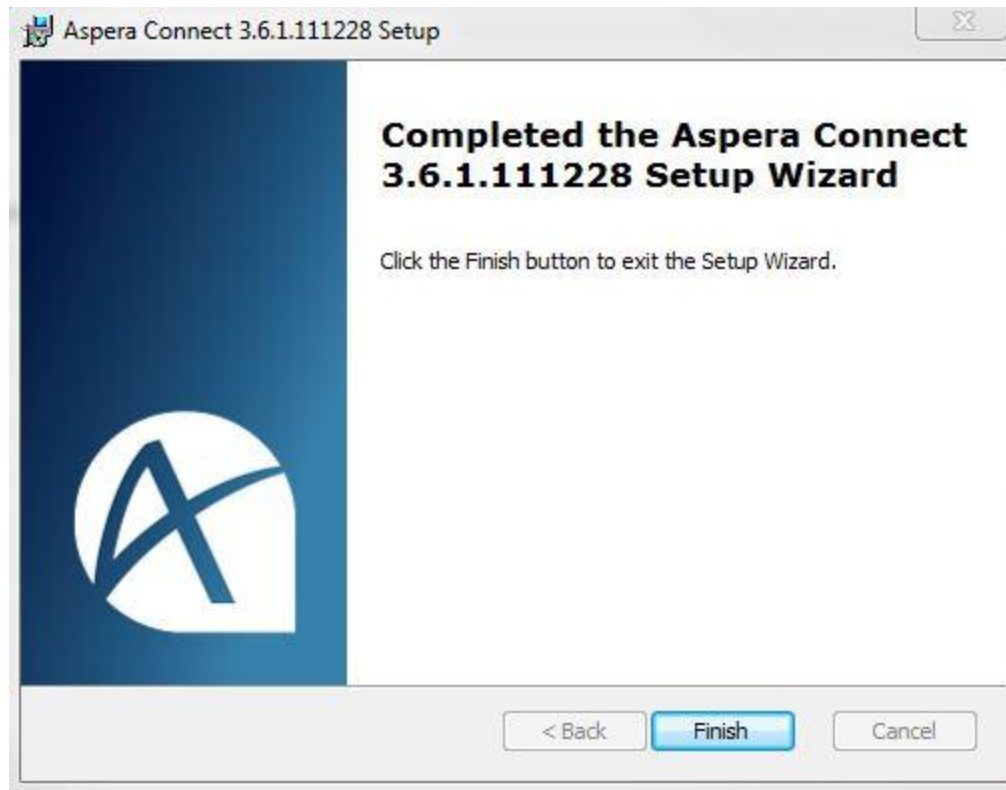
Install Aspera Connect

Another screen will pop up showing the progress of the installation



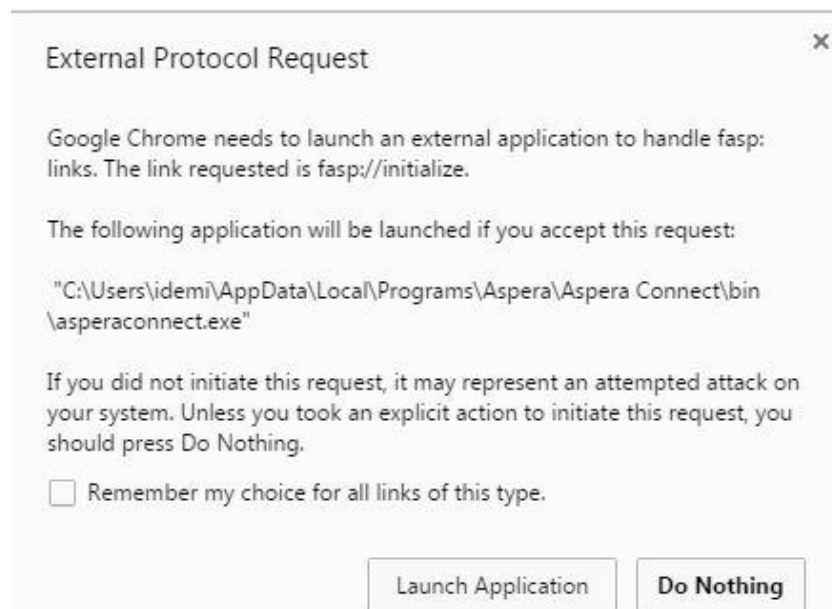
Install Aspera Connect

Once installation is complete, another screen will pop up asking you to click “**Finish**”



Install Aspera Connect

Once you go back and refresh the download and select the datasets you want, click on the Managed Download link at the bottom of the page and the following authorization notice will appear. Click **“Launch Application”**

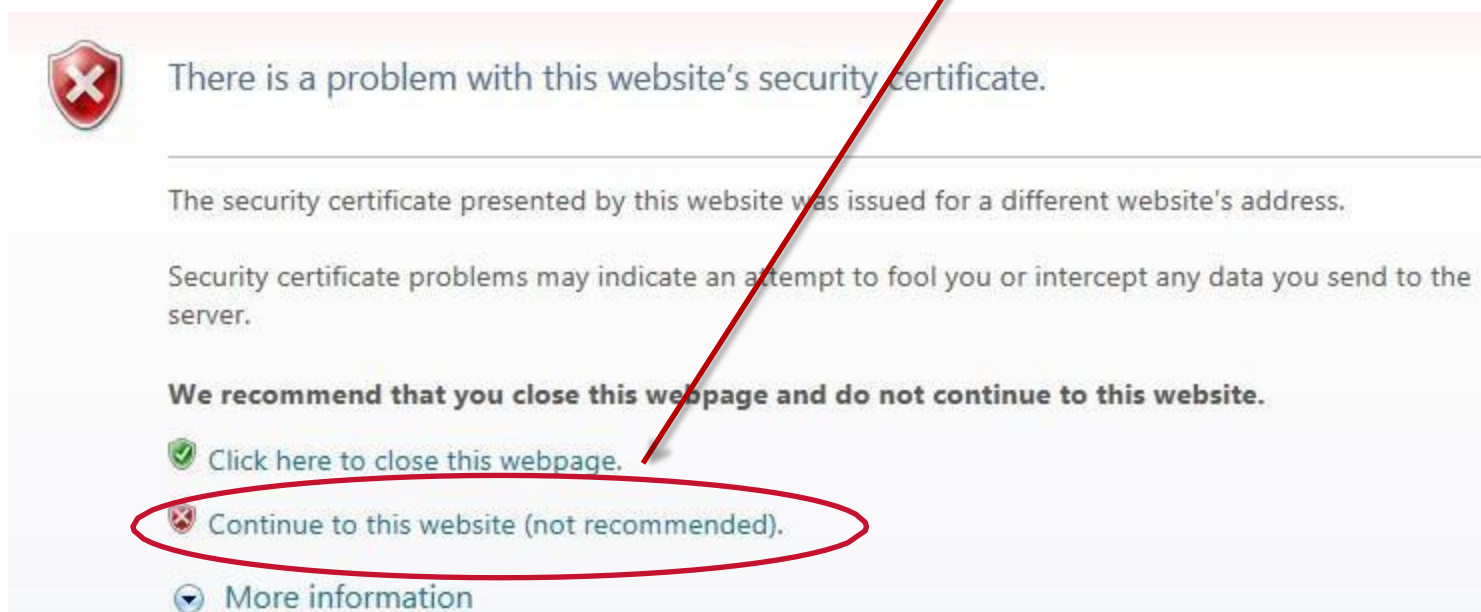


Download State Datasets

- From the same page where you downloaded the Hazus application, select the download link next to the state for which you would like to download a state dataset for a Direct Download

Download State Datasets

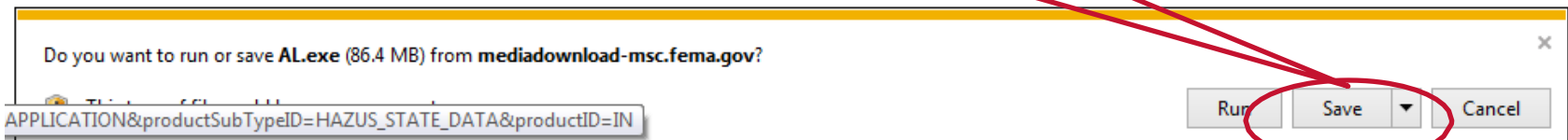
If an error page stating that, “There is a problem with this website’s security certificate.” appears, select ‘Continue to this website’ to proceed to the download



Download State Datasets

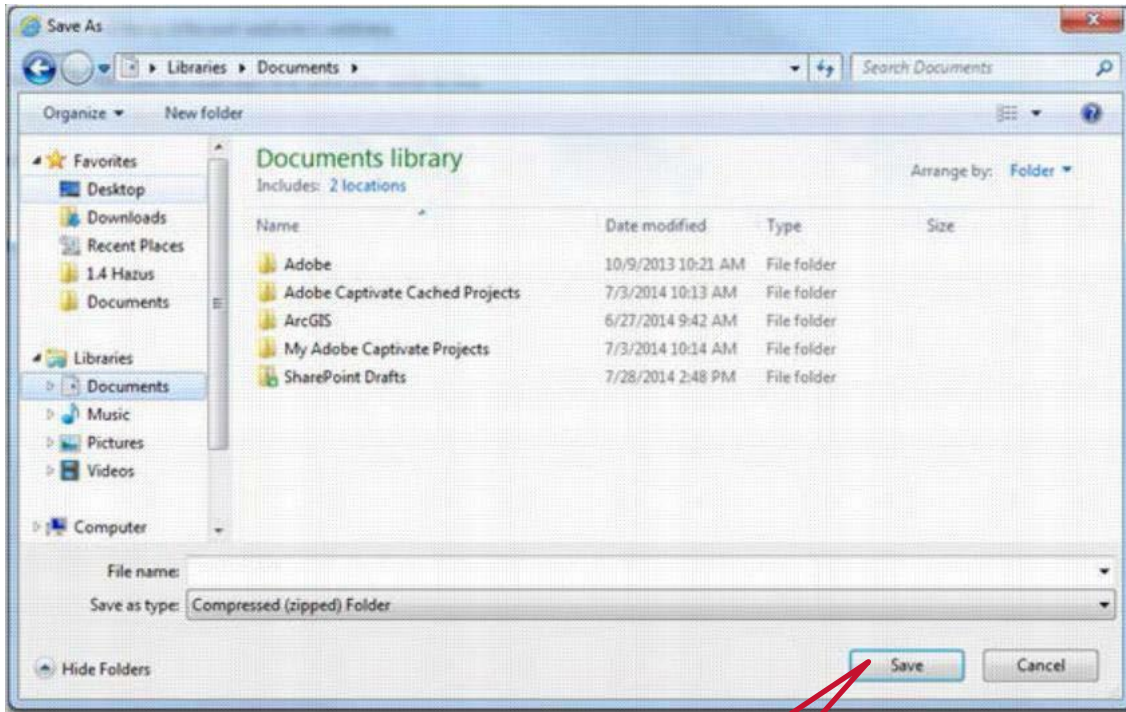
- A pop up box will appear at the bottom or middle of your screen asking if you want to run or save the file
- Choose “Save”

Select “SaveAs” to select a download location for the selected state dataset file



- Note: Your download may begin automatically depending on your web browser and settings

Download State Datasets

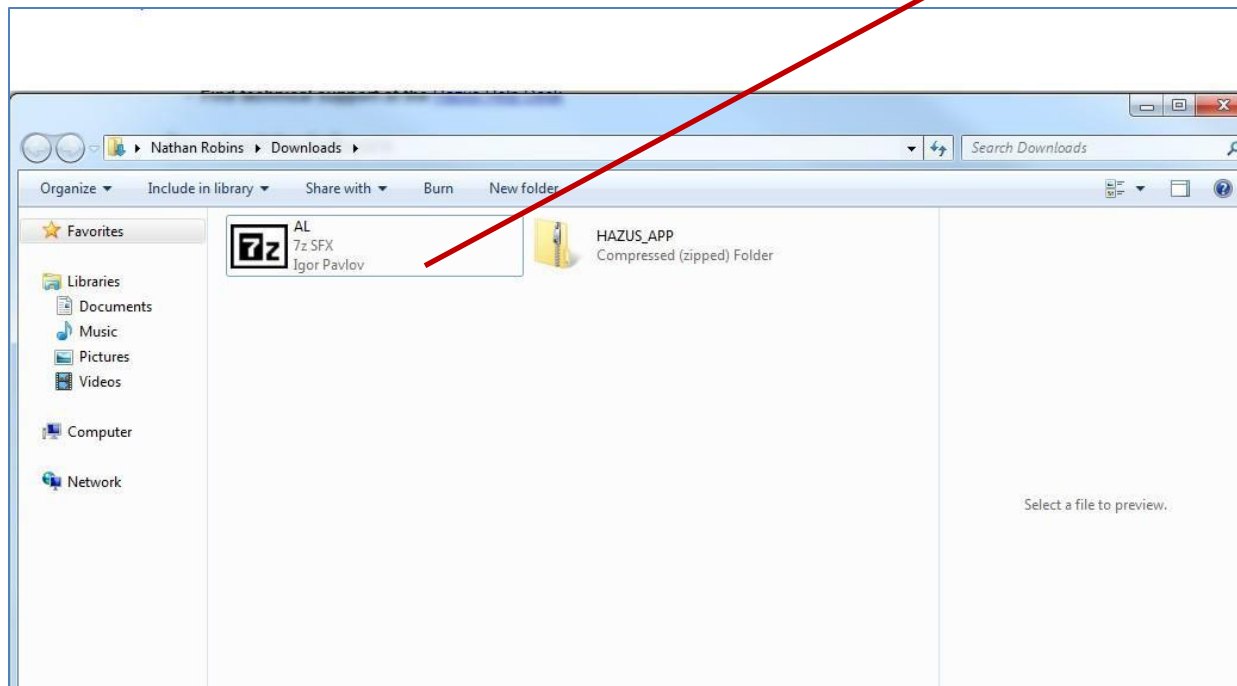


Once you have chosen a location to save the file, select “Save”

- Another pop up box will appear
- Choose where to save the data
- Navigate to the folder on your computer where you want the dataset stored
- Select “Save” to begin download

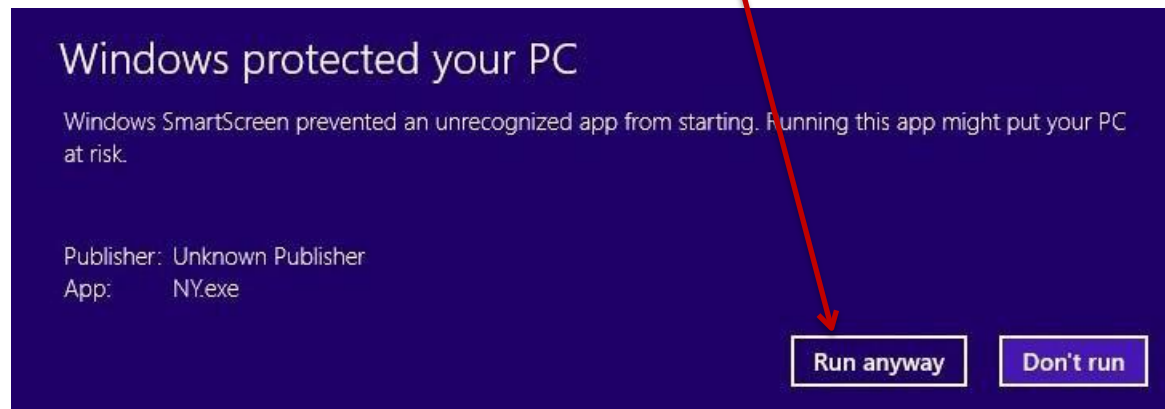
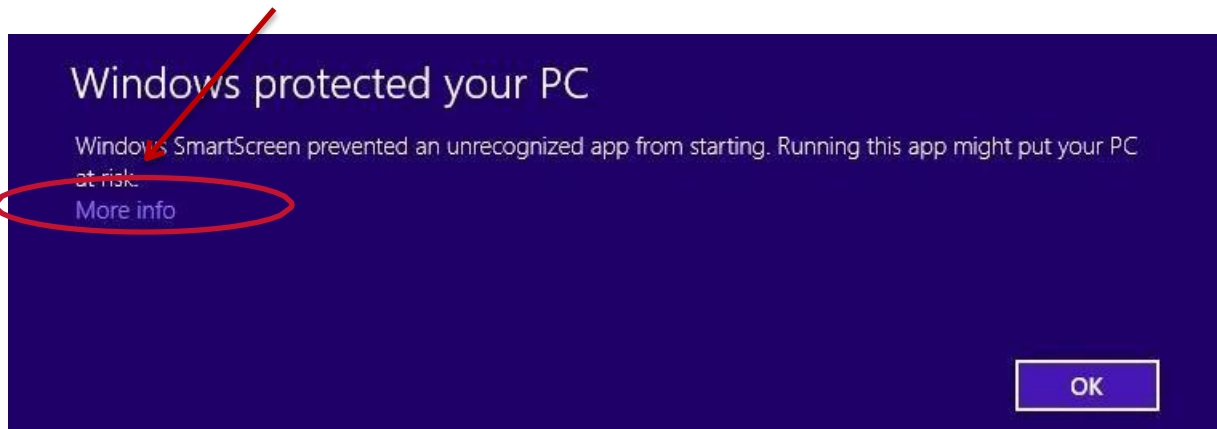
Extracting State Datasets

Once download is complete, navigate to where the dataset is saved on your computer and open the file to begin extraction



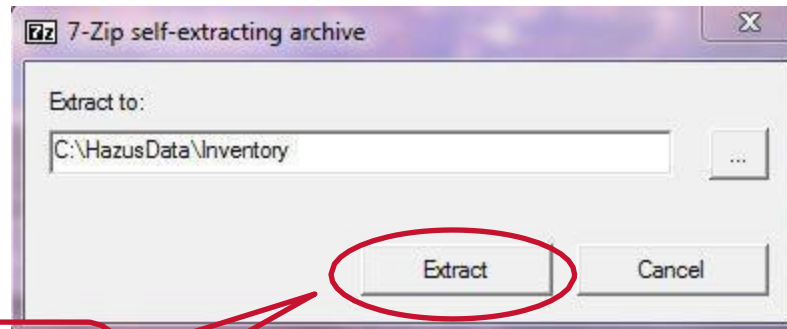
Extracting State Datasets

- Windows 8 users may be required to select “More Info” and “Run Anyway” when extracting the state datasets



Extracting State Datasets

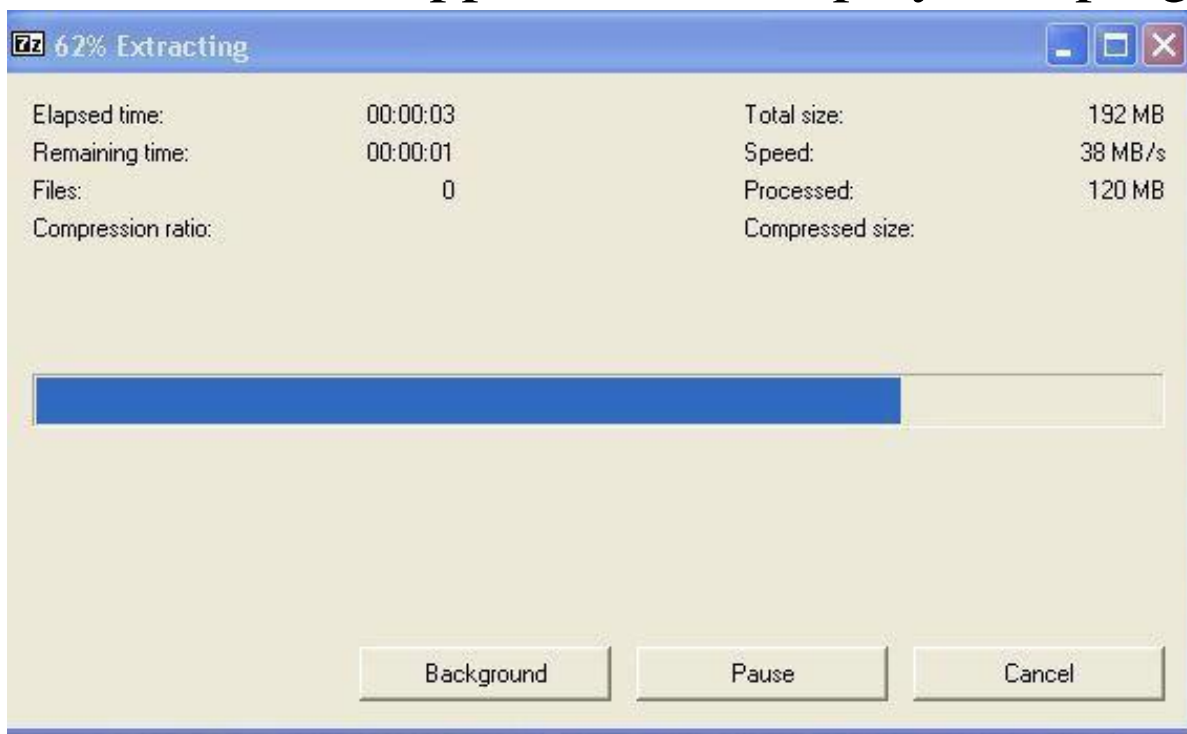
- Once you open the file, an extracting box will appear
- Choose where to extract the data
 - The most common location to extract the data is:
‘C:\HazusData\Inventory’



Select the
“Extract” button

Extracting State Datasets

- A status box will then appear which displays the progress



Once the extracting process is complete, navigate to where you extracted the data

Hazus Installation

- To install Hazus software, follow the instructions in the file labeled “Getting Started” in the Hazus software folder
 - **NOTE:** You may need administrative rights to install Hazus – please work with your internal IT department to complete the installation
- If you are upgrading to Hazus 3.2, you will need to uninstall old versions of Hazus before installing Hazus 3.2

Hazus Support

For any Hazus questions or technical support, refer to the Hazus webpage (www.fema.gov/hazus) or reach out to the following service providers:

- Email hazus-support@riskmapcds.com
- Call FMIX (FEMAMap Information eXchange) Phone Number: 1-877-FEMAMAP (1-877-336-2627)