

# MARINE CORPS KNOWLEDGE PUZZLE BOOK



**Marine Corps Combat Service Support Schools  
Camp Johnson, North Carolina**



---

Welcome to the Marine Corps Crossword Book of General Knowledge. As you work these puzzles you will enhance your knowledge of the Marine Corps. The solutions to these puzzles are located in the back of the book.

---

## Table of Contents

Word Search Puzzles	
Leadership	1
Rank Structure	2
Medals	3
NCO Sword	4
Commandants of the Marine Corps	5
Sergeants Major of the Marine Corps	6
Terrorism	7
Close Order Drill	8
First Aid	9
Small Arms I & II	10-11
Communications	12
Land Navigation	13
Combat Patrolling	14
Military Terms I & II	15-16
Crosswords Puzzles	
Compass Nomenclature	17
General Knowledge I, II, III, and IV	18-25
Hand and Arm Signals I & II	26-29
M16A2 Nomenclature	30
Who Am I I	31
Who Am I II	32
Marine Corps Seal	33
Match Articles of UCMJ	34
Weapon Identification	35
Campaigns	36
Famous Quotes	38
Solutions	39-45



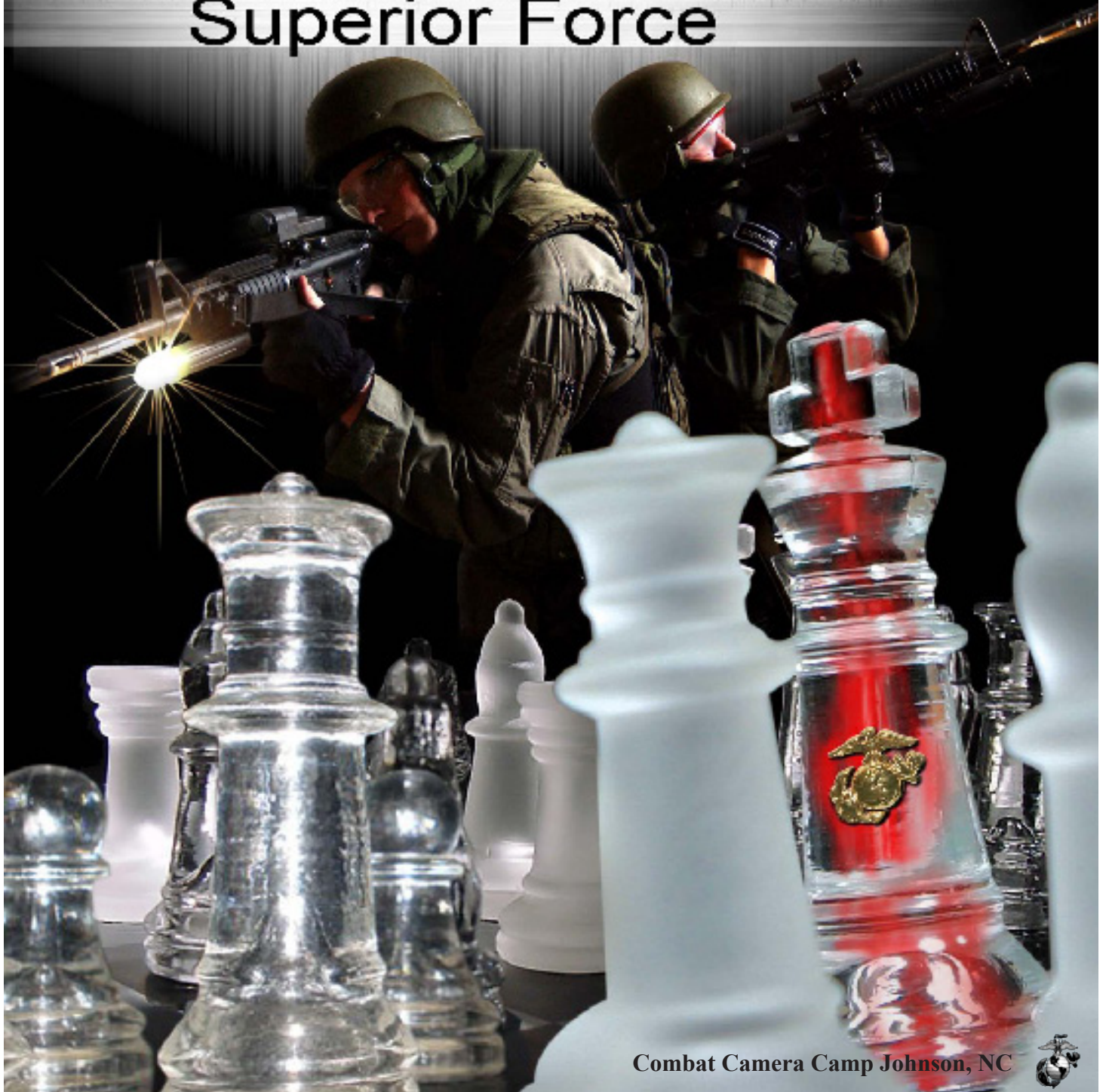
Marines conducting amphibious assault exercise.

# MARINES

SUPERIOR THINKING

has always overwhelmed

Superior Force



Combat Camera Camp Johnson, NC



**WORD SEARCH PUZZLES:** For each puzzle, find and circle all words hidden in the grid from the list below.

### PUZZLE 1

A Z R Y S Y T I R G E T N I S D Q B Z L F Q I X W  
 R M E C T E N J R U Z S W V E F E I P K A S O O Y  
 D D T N K Z T R A P E Y V P L A O K F I S R D E F  
 S T C E S O C A V J K L E E R C O N D U C T O F Y  
 P L A I V L L D N L Y N S I A J D W L V T I O M B  
 N Z R C W Q J V P I D A N W N B E A T M Q V C Q Z  
 J R A I F J E S B A D G G O T W P M I C C Q E B W  
 M E H F J E C Z B N P R Q M V F M D N I N V F I R  
 R L C O M N O I Q E R I O T O S H T F V C F N L Z  
 N E U R C T L L N U T N G B F L T P S R D K Q Z F  
 I K S P F I G D I N Y I N W U E G A R U O C O P U  
 A E V P T H U C E E T T E O U S W G F I I W O O V  
 J J G Y O R H M A E L I S Z N D I S C I P L I N E  
 M Q D D A N E B N V A A P A S F R Y A I E C N E Y  
 E T L N E V S E V J Y T R T E W J J Y V D O S D X  
 V N C E O L R I X Q O I I C L Y Q T E Y E I F P U  
 E E T R C G W P B A L V T A F D M D J I V X K D H  
 I K P H Y I Q O Q I M E A T I O E S P R O C U Q V  
 X M U T U H T I N I L P B Y S T W M E D T W R J F  
 I I S E H S Y S S K C I L Y H T W P E W I C A E U  
 Z T F N P T I Z U I G Y T E N D U L H A O A P Q K  
 V Y G R V S F A L J Z H L Y E S V O P Q N B R S X  
 T O U C I M F S S E N E V I S I C E D F A O Q G W  
 X Q P J F O H X M M C D L O S T P B E V S V R T Q  
 Y J U D G M E N T L C J Z Z U P J X F B H N G K Y

**BEARING  
 CHARACTER  
 CONDUCT  
 CORPS  
 COURAGE  
 DECISIVENESS  
 DEMEANOR  
 DEPENDABILITY  
 DEVELOP  
 DEVOTION  
 DISCIPLINE  
 ENDURANCE**

**ENERGY  
 ENTHUSIASM  
 ESPRIT  
 EXAMPLE  
 IMPROVEMENT  
 INITIATIVE  
 INTEGRITY  
 JUDGMENT  
 JUSTICE  
 KNOWLEDGE  
 LOYALTY  
 MORAL**

**PROFICIENCY  
 RESPONSIBILITY  
 SELF  
 SUBORDINATES  
 SUPERVISE  
 TACT  
 UNSELFISHNESS**

#### Did you know...

Lieutenant General Lewis "Chesty" Burwell Puller, veteran of the Korean fighting, four World War II campaigns and expeditionary service in China, Nicaragua, and Haiti, was one of the most decorated Marines in the Corps, and the only Leatherneck ever to win the Navy Cross five times for heroism and gallantry in action.



**RANK STRUCTURE**



Brigadier General



Colonel



Captain



First Lieutenant



Chief Warrant Officer 2



Master Gunnery Sergeant



First Sergeant



Sergeant



Lance Corporal

**PUZZLE 2**

L X M N A T L Y F C M D D L M Y W J N A P X H T T  
 V A X S Q N L I D C O A E O L N Q L Z R M T N K N  
 D G R J G A T A E M A N J M Z H P I Y J A A A H A  
 T T K O L E P X H U O G D O O V S E L L E I S H E  
 R K A U P G X T M L T F N P R S X U L G U H U D G  
 T G E N E R A L O G L E U D A G G T R M C B A Z R  
 I L V S U E O C E G X J N L H O E E X W A T V Q E  
 L V I F Q S O C E T J E C A L N S N X F J J R U S  
 Z J A W L F D V E O A T H Z N T H A E F I E O B Y  
 C Z W G W F X Q U C S V G G S T O N H R G V B R R  
 H O V C P A X K S R N A I R B U G T I U A D A I E  
 H Z Q F V T F X I D K A I R Y S V E N B A L L G N  
 Y C T A B S I F Q U V F L W P M A N N B X V A A N  
 G L I E U T E N A N T C O L O N E L W E J K G D U  
 V Y O I E T M C N B L K V H N R D Y G Z R A R I G  
 B T J Z A L O Z S Y R G N C Y S V X X U L A S E R  
 M Z D V Z R T N A E G R E S R E T S A M T F L R E  
 K I I O P O N Y S E R G E A N T M A J O R G N G T  
 M R H O M K S U R Y C R S P H Z P S Y J N V I E S  
 P F R X Z M H R B O G T N A E G R E S L K T A N A  
 A A N Z T B U E C E J A N P T L M Z A S A S T E M  
 L W F H S N L N A T Y B D M Y N N L E T I S P R K  
 F T D D E P S N M F Q G C Z O D T F R S Q G A A L  
 J I Y Q B T T N K M P U Q Y Z T P T O D L Q C L C  
 B A V R A H U U B L Y Y F Q U J F Y G E M J G J I

**BRIGADIER GENERAL**  
**CAPTAIN**  
**COLONEL**  
**CORPORAL**  
**FIRST SERGEANT**  
**GENERAL**  
**GUNNERY SERGEANT**  
**LANCE CORPORAL**  
**LIEUTENANT**  
**LIEUTENANT COLONEL**

**LIEUTENANT GENERAL**  
**MAJOR**  
**MAJOR GENERAL**  
**MASTER GUNNERY SERGEANT**  
**MASTER SERGEANT**  
**PRIVATE**  
**PRIVATE FIRST CLASS**  
**SERGEANT**  
**SERGEANT MAJOR**  
**STAFF SERGEANT**

**Did you know...**

*The Marine Corps has multiple ranks at two of the same pay grades. Master Sergeants and First Sergeants are at the same pay grade (E-8) while Master Gunnery Sergeants, Sergeants Major, and the Sergeant Major of the Marine Corps are at the same pay grade (E-9). Each Marine may hold only one rank at each pay grade. Whether one is a Master Sergeant or a First Sergeant depends on their occupational training and career choices.*

S N N W R J G T B I T D M N C M K S V I R L I M L  
 E S A A O A S C X F C E H K E R S I H L A Q R F A  
 R P O U V I T S J Q I I W D K O P D S D T K A D D  
 B Q W R N Y D S D O H M A J R D O O E O S N Q W E  
 S G J C C Y A Z R D A L V C M D S M A R E Y C L M  
 K C D S F G U C Z E O T Y V C S N U E Y Z Y A E N  
 C F F H G O N Y H F V V X B H O P V Z N N Y M R G  
 B V W X Q P D I H I A L F K I L Q D Q Y O R P U I  
 U K Q Z E M X O Y N E Q I T Z D B F P T R D A O A  
 B S H F Y A N W J L E V A S H G U N Z N B J I W P  
 T X K G F O U W R Z F D E V X J T H T M S S G U M  
 R K W V R G P T W I N D M M F O J C H R A D N J A  
 G D T E D V W G W E H R E K E U J E Y H Q G M N C  
 N P W P A H K C M Z A P L H L N K H K A N P E S N  
 P O O R J O T M Y K I D T Y S W T M K K R P D Q A  
 K U C T C O O N T T Z G O O I I G M T S T N A O T  
 U K F U G C Q T R A E H E L P R U P E U K J L O S  
 N C E V Y Z D X O J N M T I M L P G Q D Y Y N W I  
 P D W V I W R M F L P Z C V L R S I N L A M S Z N  
 I H A E H X K Q O G I G W C T K H H X I C L G S A  
 Y N G D I W P C L J N L M F E V P V E V T T U D H  
 K U W A I T L I B E R A T I O N M E D A L S H C G  
 J J H L W Q J N X F Z X D H O E Q E C A V T I D F  
 U D B Q J R E L Y D I U Q Y J G S X K P K S Q D A  
 K A Z L I G L Z G L L O B P O T D I O M A A T G Z



Medal Of Honor



Captain Harvey C Barnum Jr., presented Medal of Honor for conspicuous gallantry in the Republic of South Vietnam on 18 December 1965.

- AFGHANISTAN CAMPAIGN MEDAL**
- BRONZE STAR**
- DISTINGUISHED FLYING CROSS**
- IRAQ CAMPAIGN MEDAL**
- KUWAIT LIBERATION MEDAL**
- MEDAL OF HONOR**
- NAVY ACHIEVEMENT MEDAL**
- NAVY COMMENDATION MEDAL**
- NAVY CROSS**
- PURPLE HEART**
- SILVER STAR**

**Did you know...**

*The Medal of Honor is the highest award for bravery that can be given to any individual in the United States. The first military decoration formally authorized by the American Government as a badge of valor was the Medal of Honor for enlisted men of the Navy and Marine Corps. It was authorized by Congress, and approved by President Abraham Lincoln on 21 December 1861.*



## PUZZLE 4

N Q Q Y H I A Q W Z F P O S Q P Y S N O H E V C  
 V O U F I G C T O Y T V C D V Z X B K O M T B M  
 H E I K U F O I B L E M M O P E G Z B L D G P V  
 B I L S P L S P I R G J E I M A M J O F R K S K  
 P M L E S A L X L E D A L B C Z W B S B K Q R K  
 Y S I T R U E E D G E X K P T C M U R F W X V L  
 H M O S S A C I R T E B C P L Q E Z I C Z L O S  
 H B N F K I F R O G S T U D T W O T T F S R U D  
 Y F Y S K P Q F E N L S N G A K H F J W H P L F  
 A F G Z E N G N B P A R K G A R D R U B N Z V K  
 K T L A S D O K W J F A T C O B C N Z B I G S J  
 C V J G C J O O V F Z O R A S I P E B U X J N T  
 I L R L B I B K B Q D H T L X U M S V Y H U I L  
 F Z D F O C G P I D H C D N A F E R L G L E J D  
 Y L L N Z R T U X Z V W F X I F Y L A D P N Q U  
 J D M R U B G S S J I Y V O H O Q K M Y J E G L  
 X Y I O U S B N O R M S B E A R P Y Z A A T R X  
 V D G F V I Z C G D T R I B Y T M U K R R O Q B  
 S F U M Y F R G T S U G V M P E T O P Q W F I Z  
 Q P A E C E T E A W M P E T H E S L E Q B G N T  
 R A P J H V M F M I B M E Y H W W S A X M X N K  
 D N U H T I M X V Y K C S G G P U W I U W S L M  
 X I V F O M L G S G S W W Y I E T H P Z C V P K  
 U Y M E T S N K I P K B I N X B C I R M C X L E  
 R A P A H V M F B I B M T Y H W H S A X M X N Q



Marine NCO rendering a sequence to a proper salute, while performing drill with an NCO sword.

**BLADE****BOW****DRAG****FALSE EDGE****FOIBLE****FORTE****FROG STUD****FULLER****GRIPS****HILT****KNUCKLE****POINT OF PERCUSSION****QUILLION****RICASSO****THROAT****TIP****TRUE EDGE****Did you know...**

In 1859 a sword was authorized for wear by Marine NCOs. The swords worn by Marine officers and NCOs appeared to share very nearly the same pattern and characteristics. The Marine NCO version, though similar to that worn by Marine officers, had several differences. Among the most noticeable, NCO swords had plain brass hilts and scabbard mounts, whereas officers' hilts and scabbard mounts normally were gilt. In addition, the grips on NCO swords were wrapped with leather; whereas those for officers were usually covered with sharkskin. Finally, NCO scabbards had only two scabbard mounts, consisting of a top mount with frog stud and a scabbard tip, whereas officers' scabbards bore three mounts, including upper and middle mounts fitted with carrying rings.



K M M T O V R Q E L D D I B M A I L L I W X S W J  
 W B E P F R A N K L I N W H A R T O N J H G G A A  
 E W I L L I A M B U R R O W S C Z C N W E O G L M  
 L B J F V G R D R D N A M P A H C D R A N O E L E  
 A Q H R V B N G E E G N O S L I W S I U O L O A S  
 G M R A X G B J E N L J A C O B Z E I L I N R C C  
 Y V Y N E L Z Y M D U L E Z H A D K Y I H Q G E O  
 N W R D P L F W I R N E U M C L I X K E V D E G N  
 O O A O U E L Q Y E J A J F I D F Y R P O O E R W  
 H R V L O S J I U H K E V E N H W S O I K O L E A  
 T R W P H S S Z V P C H A R L E S M C C A W L E Y  
 N A M H S U C T R E B O R F E N B Z E N L Y I N B  
 A B H P D R D D X H N A G A U D H W O U U E O E J  
 L T F A I N M C C S A L G J M E N O Y X R H T S G  
 F R V T V H W D G L K V L K A R Y A J V K S T Y A  
 R E N E A O U A S E F V S E S S F Y X Z S E E I H  
 E B D J D J P O O U S E C J D O I Q B E E L Q F S  
 D O S E N O J S E M A J A J J N M R I D L R P S I  
 G R T T E N R A B E G R O E G E E K R E R A U T B  
 R T H O M A S H O L C O M B I H S W K A A H A E T  
 A J F U W O L V Q Z J Y E E G A H L E A H C I M C  
 Y I H G C X A V J I H C A R L M U N D Y C N S W N  
 V A J A O H G N B F O O E K L A P D R R G O H I I  
 X C T D F Z O P N C J S S E P N R B B M Y S S O Y  
 U Y X S P J O J V G F R E O Q R R U V Q N J F P J

**ALEXANDER VANDEGRIFT  
 ALFRED GRAY  
 ANTHONY GALE  
 ARCHIBALD HENDERSON  
 BEN FULLER  
 CARL MUNDY  
 CHARLES HEYWOOD  
 CHARLES KRULAK  
 CHARLES MCCAWLEY  
 DAVID SHOUP  
 FRANKLIN WHARTON  
 GEORGE ELLIOTT**

**GEORGE BARNETT  
 LOUIS WILSON  
 MICHAEL HAGEE  
 JACOB ZEILIN  
 JAMES CONWAY  
 JAMES JONES  
 JOHN HARRIS  
 JOHN LEJEUNE  
 JOHN RUSSELL  
 LEMUEL SHEPHERD  
 LEONARD CHAPMAN  
 PAUL KELLEY**

**RANDOLPH PATE  
 ROBERT BARROW  
 ROBERT CUSHMAN  
 SAMUEL NICHOLAS  
 THOMAS HOLCOMB  
 WALLACE GREENE  
 WENDELL NEVILLE  
 WILLIAM BIDDLE  
 WILLIAM BURROWS**

***Did you know...***

*The first Marine to hold the grade of four-star general was Thomas Holcomb, the 17th Commandant. By the Act of 21 March 1945, Congress permitted the President to appoint the Commandant of the Marine Corps to the grade of General. Alexander A. Vandegrift, then Commandant, was promoted from lieutenant general to general on 4 April 1945, to rank from 21 March of that year. He thus became the first Marine to serve in the grade of general. The Office of the Commandant was permanently fixed at the grade of four-star general under authority of the Act of 7 August 1947. All Commandants since that date have been entitled by law to serve in the grade of general and, in accordance with the provisions of 10 USC 5201, to retire in that grade.*

**PUZZLE 6**

A W X M J X R H R L U Y M Q T C L V F S R G Y V W  
 J W N O A D S A S T T Z N L M P P U Z S P W X A Y  
 J U G O V Z R R F M W L K K T D N R S G O Q I T L  
 D M M V N Z E O F G S C M Z I I O E H N S R I C L  
 F M L A Y L M L F P W P A H Y B Y F L K J H U H D  
 D D B Q C Z M D E W J H G R E V E D G U T W K O W  
 A Y D Y W Q O O O A A U F R L A L W C C T K K S U  
 B R O Y D C S V L X H R T K A T K J Y A E Z U E S  
 C K S B L K D E V C O C C H S N O W K K K D H Q I  
 N T Q O M O I R M R L I I D I H W N M O C W R Y H  
 D S N P H I V S V E W Q P M N S V A K W U P J H Y  
 D T E D D H A T A T R A I M C A S Q F E P G C E T  
 O P S J I M D R S V D A A M A M L R A N N E U F T  
 M Y T J O D Y E I A X S Y J D F D E R F O T I N G  
 I S K H E R B E R T S W E E T V E R L S T B F L B  
 W J T E L R R T H A M A L R Q X X T O G N Q W N G  
 B A L V E O S X R N M B I F Q F Z M A F I U F D C  
 P W Z B J E Q O L P K C A L B Y R N E H L V O D I  
 I G L R N F L N M Z L Q D X M W A F K U C A L Q L  
 D I Z H M T T S X L V Z H D K E J P D W A B Y G Q  
 W C O P K G K N I Z I H P K H P K W A H Y J E F F  
 O J S J W W O Q P W E R E B U A R S I C N A R F U  
 M R A J O C H I P L E B S X Q G Z A T W N N C I W  
 W G N L W P W M S F U L O A N S S Y R U L L S L H  
 N N Y E C O T E Z L V B J H U C O E I G C Q C V U



**WILBER BESTWICK  
 FRANCIS RAUBER  
 THOMAS MCHUGH  
 HERBERT SWEET  
 JOSEPH DAILEY  
 CLINTON PUCKETT  
 HENRY BLACK  
 JOHN MASSARO**

**LELAND CRAWFORD  
 ROBERT CLEARY  
 DAVID SOMMERS  
 HAROLD OVERSTREET  
 LEWIS LEE  
 ALFORD MCMICHAEL  
 JOHN ESTRADA  
 CARLTON KENT**

*Did you know...*

*The Sergeant Major of the Marine Corps wears two stars on his chevrons flanking the Eagle, Globe and Anchor. The U.S. Marine Corps' first Sergeant Major was Archibald Sommers, appointed on January 1, 1801. This was originally a solitary post, similar to the modern Sergeant Major of the Marine Corps, but by 1899 there were five Sergeants Major. The title was abolished in 1946, but re-introduced as a rank in 1954. The post of Sergeant Major of the Marine Corps was established in 1957 as the senior enlisted advisor to the Commandant of the Marine Corps.*

V R H O S T A G E T A K I N G S X R G B L S W H F  
 G O D L E X E S B I W D A R K L E U N E W R V O Y  
 P R Y B A J U O S B P H S Y S T A F I I O L X N A  
 E R W L H C M O F A Y G J S N Z E C K R F E W A I  
 B E T Y A B I Q H B S A W E V U L H C U K K K Q S  
 A T N S I N S G I C C S C J O T Z E A T J U R Z P  
 T L C N V N O D O K Q E I S V S N M J B Z L C A S  
 S A G D T Q B E I L D S E N Q P J I I O X Z G O E  
 Z C A Z I X S N J A O I T K A E E C H M U Z P R L  
 A I Y M Q W G H R W R I Y V R T S A L B N O S R A  
 O G D U B W K T S E E A B H W F I L O I D J V L L  
 Z O V D H U D Q B L X Q X B F R N O M N L M I D F  
 F L N T F L S B A V Z D P J T C H L N G X O F J D  
 W O K W R W O H N L C E Q F Q I Y X V D X O S D C  
 P H D O S R B R E Z Y F A X V Z O X Y I V T B J O  
 Y C W H M E P G I S W B O L K C V W Y F I C H E N  
 J Y E X N Y W O T C E S C S O E D T M Q N P A U Y  
 W S W S B D J J S K A N O J X R S F W P U N K T H  
 N P F G N I P P A N D I K D Y M U J P M F D E G N  
 P Z N V I D L E H M D I H K W X M H C V E Y Z X A  
 E X T O R T I O N J C U F T I Z C V E L B H C A N  
 P H K K Y R K M Q W D M M A T X S D I N U G C Y V  
 R Q I A F R O O B X P L T E Z W G X Q R L N D F Z  
 R U H Z C I L M D U K S K O Z W N O Y C N B M P W  
 J M G O X K B O P I K H K F A V D K N N Q H C D X

- AMBUSHES**
- ARSON**
- ASSASSINATION**
- BEIRUT BOMBING**
- BIOLOGICAL**
- BOMBING**
- CHEMICAL**
- EXTORTION**
- HIJACKING**
- HOSTAGETAKING**
- KIDNAPPING**
- PSYCHOLOGICAL TERROR**
- ROBBERIES**
- SKYJACKING**
- WORLD TRADE CENTER**

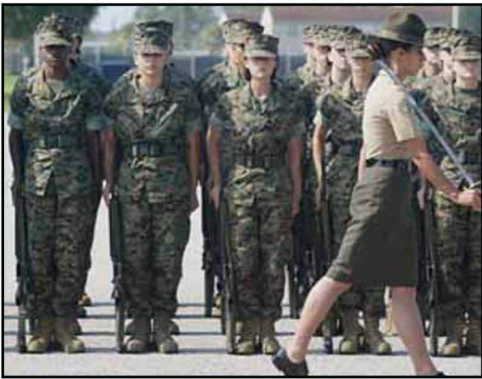


**History...**

*On October 23, 1983 at 0622, a large delivery truck drove to the Beirut International Airport where the Marine Barracks was located. After turning onto an access road leading to the compound, the driver rushed through a barbed-wire fence, passed between two sentry posts, crashed through the gate, and slammed into the lobby of the barracks. The driver detonated explosives with the power equal to more than 12,000 pounds of TNT. The explosion crumbled the four-story building, crushing service members to death while they were sleeping. The terrorist attack killed 220 Marines and 21 other U.S. service members who were stationed there to help keep the peace in a nation torn by war. It was the bloodiest day in the Corps' history since World War II, when Marines fought to secure Iwo Jima.*

## PUZZLE 8

D S P T X Z P E H O Q V G H E Y U C Y F R T U N I  
 U O M C U L J N J N S V K F C R L M Q O S M D K F  
 T L U R P O W R I H M Z V J A W I Q P R H Z I T M  
 E S T B A R L C M L R Q O E F D M P T M V F A V V  
 Y Y M B L R I L C A A O S Z T H K J L F P L X J P  
 I T E R R E E G A P T B L Z H N T E H O U F P I H  
 C C O S A W T D H F N A Q G G R E S T R V E I X D  
 R U Z S R N W I R T E S E S I I B A X I F L Y D A  
 B E K Q C I O Q M O S L V N R L L E X N H E H J F  
 S O R L E C G I M E E H B K E K C T U S A F M H Q  
 X C P D D I K H T F R S O F V L N A N P N T R J O  
 S M R A T R O P T C P I T U O O Z L B E D F R A C  
 U J H Q L A Z F R D E S U S L S I T Z C S A Q H C  
 E C A F T U O B A N H P E J K D H O M T A C T V Y  
 E O A Z K O Y T I O I R S N F G E L Y I L E E Q J  
 U B B F T C M L U Q A C A N I B F R C O U H Y H T  
 K J B W L Q L L M N Y R F R I L R R A N T G S Y Y  
 O T L A W A D O K B N C N C R L C D W R E H P Q I  
 A G K D F E N S D E R M V I Q Y G T I U M V T M H  
 V M H G R C M V P Z U X D A K B Z X Y I T S B G D  
 J O W A G I V O A L K N A L F T F E L E H T Y B H  
 E Y R Z R K F L O P A R A D E R E S T Q O W I W N  
 B M N V C H J C A U S T O T H E R E A R V Q Z A L  
 S P G L B K U Y H W M W Q M U R M N D T Z X N A D  
 Y I E I R I O B Z E F X M V A P F J J R A H U Y P



Senior Drill Instructor performing Close Order Drill with Female Recruits from 4thRTBn, Marine Corps Recruit Depot, Parris Island, SC.

**ABOUT FACE**

**AT EASE**

**BY THE LEFT FLANK**

**CLOSE RANKS**

**COLUMN RIGHT**

**DOUBLE TIME**

**EYES RIGHT**

**FALL IN**

**FALL OUT**

**FORM FOR INSPECTION**

**HAND SALUTE**

**INSPECTION ARMS**

**LEFT FACE**

**LEFT FOOT**

**LEFT SHOULDER ARMS**

**OPEN RANKS**

**ORDER ARMS**

**PARADE REST**

**PORT ARMS**

**PRESENT ARMS**

**REST**

**RIGHT FACE**

**RIGHT SHOULDER ARMS**

**TO THE REAR**

### Did you know...

One of the cornerstones of Marine Corps customs, courtesies and traditions is our execution of close order drill and ceremonies. These traditions are perpetuated from one generation to the next through constant use and practice. The "esprit de corps" of every Marine has been brought about by their ever-present feeling of pride, not only in their unit, but also in themselves. The preservation of traditional discipline, our customs and courtesies, and the heritage of our Corps is our duty. The object of close order drill is to teach Marines by exercise to obey orders and to do so immediately in the correct way. Close order drill is one foundation of discipline and esprit de corps. From MARINE CORPS ORDER P5060.20

**PUZZLE 9**

**FIRST AID**

I M Y K T S I U E P P S P B E N Z Y S V W A O A R  
 A P O V L B E L Q E K O M M G X W E E U R N H H V  
 I Q M U B L U T T L W G K F D G A E I U H K D W H  
 Q O D Z T M P I I T T C W D Y V Q D T R O J W G B  
 U E O Q O H B R O B O N Y J Y X I B L E U B D W V  
 S E S A U T T U E H E T O R M V B F A S D H M P D  
 E Q E T S T R O S S I K N C N N Z T U T A U K Q B  
 A N E O N N A R M N S X A C A Z T P S O B N B D R  
 U L R W I I O B C O B U Q N P F R Q A R R T U L D  
 D F C Q A F O I T G U D R Z S O Z R C E A A M M J  
 K Z U H T M S P X I B T Y E T K H W T B S R A F Z  
 W E Z A Z I C P E X F Q H E D P K S A R I L I S F  
 T S E M O W H P Z R G W C P S R M D E E O F V L N  
 K R N N N P T B U Q U T M R R V E G H A N V B A S  
 T S G I R M O Y L N T S Q Y N O W S P T R B T C E  
 G G N H P C M C P H C C S Y Z W B X S H N Z P E R  
 I M P R O V I S E D S T R E T C H E R I V J S R U  
 U M D W U L L W O P L F U G R U J B F N N V M A T  
 H C N S D B O H F E G L J R V P Z K H G F G R T C  
 Y X T F J U D A S T O P B L E E D I N G T R S I A  
 G N B S N Q K C O H S L A C I R T C E L E K P O R  
 T R T D F E B Y X R G A R D O H C N O P D F Y N F  
 F Q P G Y R A V U L S I O N D I A Y D D U B D X M  
 X E Y L A Y M H J D C A O I E W D N G E A W L D T  
 W D B X T M I P L O A Y L M M D M E L J R V A N T

**ABRASION**  
**AVULSION**  
**BUDDY AID**  
**BURNS**  
**ELECTRICAL SHOCK**  
**FRACTURES**  
**FROSTBITE**  
**HEAT CASUALTIES**  
**IMPROVISED STRETCHER**  
**INCISION**  
**LACERATION**  
**MOUTH TO MOUTH**  
**PONCHO DRAG**  
**PRESSURE DRESSINGS**  
**PRESSURE POINTS**  
**PROTECT THE WOUND**  
**PUNCTURE**

**RESTORE BREATHING**  
**SNAKE BITES**  
**STOP BLEEDING**  
**TOURNIQUET**  
**TREAT FOR SHOCK**

**First Aid Buddy Aid**

- 1) Start the Breathing
- 2) Stop the Bleeding
- 3) Treat the Wound
- 4) Treat for shock

**PUZZLE 10**

P V V U D T A T G L D K T P F G Z W C T E C N P M  
 Y W V U M A H U W A A E M W F B P J R B H R F I J  
 U G H T W I H D T P S U L E D B F Q S E L X J T I  
 O E B D T U W Y Y O U O G O T Y O T M E B D R T C  
 Y I S B V S I U A H M N P A O D S I H V R A D H H  
 V N O J L F X A S H K A P E S C C X T F E H N G A  
 I L L U M I N A T I O N T H R A R Q U G A J U I M  
 H G U O R H T W O L L O F I L A C I G K T W O S B  
 C Z X S F A B A G Q E P P S C I T N A W H K R T E  
 W T C K T R S I Y R R Q M K K R I E E O C P L N R  
 H N W T S T V H G V E O U B H N I K D C O B L O I  
 G W Z Q Y S Z K N N K N K U A O O F P Z N W A R N  
 C A T Y Z E D G Y E O F A E U O B C L N T E B F G  
 Y R A I D N E C N I E I L D B K N O L E R U T F L  
 T Y P S C B F D D E A C T A E E B C J Q O V V E B  
 X A R S Q A C D D I J G T A J S B K L O L H X A M  
 T A B X C E I I Y S O A Q B T M Y I N J V T K A P  
 E J E C T I N G Z M D L V L A N H N B R R Y W I A  
 M Q B A M G E I S Z D Z K J S G E G S A G D K P X  
 A D J U S T A B L E S I G H T S K M C Y Y B Q P F  
 P C G L U Z C J T F K X Y J B Y E T G N I R I F E  
 R E O B W H G X T Q T F Q Q Y K I F X A F H Q N W  
 C E H S K X O B M S C Q Z P N O I P G K R K G R G  
 V K H I A Q F Y O M S S P L N A P V J I M F T B D  
 R V C N F H V G O Z U M Q N G H Y P A Z C U P X M



Marine sighting in on target with M203 Grenade Launcher.



Marine shooting an M1014 Shotgun during a live fire shoot aboard USS Essex (LHD 2).



Marines conducting suppressive fire training at Camp Pendleton, California.

- ADJUSTABLE SIGHTS**
- AIR COOLED**
- AUTOMATIC RIFLE**
- BALL ROUND**
- BREATH CONTROL**
- CHAMBERING**
- CHEMICAL SMOKE**
- CLEANING GEAR**
- COCKING**
- DATABOOK**
- EJECTING**
- EXTRACTION**
- FEEDING**
- FIRING**
- FOLLOW THROUGH**
- FRAGMENTATION**
- FRONT SIGHT TIP**
- GAS OPERATED**
- GRENADES**
- ILLUMINATION**
- INCENDIARY**

B Z E A W D E C P T L S J M U G I E F R C D T C Z  
 R N C O Y A S R Y K Y E Y L K Y G Q X B K V N M G  
 K E S O C U I V P B A D O T K Q M S B O C Q E D R  
 P C C Q S M Y Q H O N R E L A X A T I O N X M A A  
 G I D O E U L L S P T L O L P K Y O O Q C Q N W P  
 N N R R I F G H H N W S B E N O R P Z H H Z G E I  
 P U I G G L S H O U L D E R F I R E D S B M I L D  
 O G W L L I S C N E U T F T N L P F K I A N L I F  
 O M A E E O R P J C H F Z G Y X X O T G C Q A T I  
 L E X M M E T J R O I W U R X O Q N A H E S T C R  
 K K K U G B N S Y I N R E Q Q A A Z G T N Z H E E  
 G E R G Y O G K I U N U S G U L I N A P I E G J Q  
 T P I N S Y Y A V P C G A G L N I S E I Z R I O L  
 J R L O R T N O C T O I R E E D T P G C A O S R V  
 T M I G N I K C O L N U P F N O N R B T G I J P G  
 Q H A P L O C K I N G O E A C W N O H U A N S F C  
 F X D C F E F U O T R D T K C R R K B R M G B B W  
 S D M S H L Z D R P Z S W O R N I V D E O Y B L V  
 Z I W Q P U A E V F X E M D T B Q Y Q R M O Q L A  
 S Z T F T W Z I D D L F N D Q J F M O E K P O M W  
 I D P T E I L W R D C R L F H Q E J G B I X O M E  
 B H B M I F S G Z S D G Y U A V B M E Z Y X S X L  
 S R G Y U N C J U E S R W C O M R I D W F U Q X P  
 H K D O Q T G F L B W Y D Q I J U F I I D M Q E Q  
 I N P K H C X T N S N V U U Q I W Z E W B C Y H A

**KNEELING  
 LOCKING  
 MAGAZINE  
 MAGAZINE FED  
 PISTOL GRIP  
 PRIMER  
 PROJECTILE  
 PRONE**

**PROPELLANT  
 RAPID FIRE  
 RECOIL SPRING  
 RELAXATION RIOT  
 CONTROL  
 SHOULDER FIRED  
 SIGHT ALIGNMENT  
 SIGHT PICTURE**

**SITTING  
 STANDING  
 STOCKWELD  
 TRIGGER CONTROL  
 TRIP FLAIRS  
 UNLOCKING  
 ZEROING**



Marines firing 9mm Pistol during annual pistol requalification.



Marines firing M1014 Shotgun during familiarization firing.

*Marines are known to be the best marksman in the world. This is due to the training and applying of the basic fundamentals in marksmanship training. The end result is to hit what you are aiming at.*

**Sight Alignment** - The top center of the front sight post is exactly in the center of the rear sight aperture. If an imaginary horizontal line is drawn through the center of the rear sight aperture, the top of the front sight blade will appear to touch this imaginary line. If an imaginary vertical line is drawn through the center of the rear sight, it will bisect the center of the front sight, thus center your intended target.

**Sight Picture** - In sighting, the shooter is concerned with correctly pointing their rifle so the bullet will hit the target when fired. To do this, the rear and front sight post and target must be in their proper relationship. The shooter focuses on the front sight post ensuring proper sight alignment both horizontally and vertically the rear sight aperture. Focus is then shifted to the target to check that the target is in sight alignment. As the trigger is being squeezed, the shooter will shift focus from the target to the front sight post once again ensuring proper sight alignment. After the round is sent down range the shooter should still see that the front sight is in focus and aligned with the target.



Sight Alignment



Sight Picture

**PUZZLE 12**

G M Q D E P R I J I E N K B S C T H S A J Z O G S  
 R E D L L E T K M G O I T C K Q J B X H E M C J E  
 D S U R L Y K D A V W E L Y A R X T V T G A Z O E  
 I S Z L D E N N E K I L V R Z X H I N I B D B A R  
 Z E V D U Y Y M A L U B Q C A A F X K V R C H M C  
 Y N Y X D Z B C U Y L W U C X H J S B U O P P R N  
 D G P F I E Q J A M O O E G V G C U G J L X K H O  
 I E W Q R M O O S L P M B D M W F U K A I V G K O  
 J R E H P O V V A R L R E S I M K K B F Q L U O G  
 W S X M I C T A K X Y F C F L L N K D X V Y L F L  
 T K P T K S Q R L U L X O W X B F P V E M B V H F  
 K U U R D K K B O G N A T R S W X D S M J H Y A K  
 M R L R E J A E D S I G B D F M J L P N P R S G L  
 F Z X I L F X M Y S E N S D X I N I I S W P Q D U  
 J I V U G A S L W X E Z D Q U K R R O M A C W N B  
 H O T E L S E Q A F O Z O I Z E O E F P A G B E B  
 N B W A V T I I E B M R W H A M J L A R F J Y X X  
 L N R O T C I V A F T E H R E S O Q A D D R I Y V  
 R J W E J F R W K T H I Q O Z G H G T Z P M G Q I  
 U B W P E T O R B O R V X F X I C A A A S O T U D  
 D W K T D O S O U R S W O M Z H E A W I R A X G F  
 U J M X Y O C M O T B C P J M L T O E H T B W J S  
 N A M O I D A R W X P Y U N I F O R M L K I L O W  
 X C W Y H G R Q H O N Z M B V Y R L E U V K S Q M  
 J T Z G V F P U G F I D Q U Q A T D H C W U M H R



Marine installing communications for the rear area in direct support of forward Marine units.



Radio operator receiving transmission for fire support.



Marine calling in fire support.



M1A1 Tank Commander radios another tank for incoming fire support request.

**ALPHA  
 BRAVO  
 CALL FOR FIRE  
 CHARLIE  
 DELTA  
 ECHO  
 FOXTROT  
 GOLF  
 HOTEL  
 INDIA  
 JULIET  
 KILO  
 LIMA  
 MESSENGERS  
 MIKE**

**NOVEMBER  
 OSCAR  
 PAPA  
 QUEBEC  
 RADIO MAN  
 ROMEO  
 SIERRA  
 TANGO  
 UNIFORM  
 VICTOR  
 WHISKEY  
 XRAY  
 YANKEE  
 ZULU**



C L D W M M S I D T E C Q H W I Z T Q S R R H W Z  
 H O L H F F I L C A O H T P B E O E I A O U C M G  
 L V N I T O T E F N O R W M H P N I A D A U T K R  
 R G F C H R B B V T O R R U O T N O C D D T E I G  
 H U B Q A P O E Y N M R D G S C Z U W L J N K M J  
 B Y Q C S V X N C V W W R E G C Q F L E U U S V R  
 U E V P I S E I E M Z A X L V J W U F E N O N T S  
 D Q P T L S T S E U P M Q B O O H J S N C C A H E  
 U H J O W E D G L H R K F C I V R S M B T E L T T  
 Y C P F N R K P I O L T R S W G F P U R I C P U P  
 S E T G A O Q C R R P H E H P W D V M D O A E M T  
 L G A V X N A B V A K E B I S L N I T I N P R I E  
 E M I M S L N O I T A V E L E Y J P P K N C I Z J  
 J N H D C I J Q C S E S S I D O O Y N P H U F A H  
 E Z C R O N J C A B P S M K J Q G D O I E M P O Y  
 J X E V R U L J E U A E M I L I T A R Y C R E S T  
 S S K J L E M N Y P I W I E P M Q E T V N I I S E  
 T S E T A N I D R O O C D I R G R O H H A V B Y W  
 Y G A R D L K E L T Q B F L X H P L S T P L N F T  
 Y T I P Y A D F F D N F A L Q Y R H T W F M L K J  
 J N E K M N C R O S S R O A D Z W I A V K M Z E U  
 G H S U U O O Y O G S E Z W L G V C R O V X Z A Y  
 N Q K A T P C U L V E R T A Y D G V Q W T N E S I  
 V L P P B L N L F M I R W T D N R H U Z C W S M E  
 L U U Q U T L M C O Z K I I Q T I F M V O T N Y T

**AZIMUTH  
 BIGDIPPER  
 CLEARING  
 CLIFF  
 COMPASS  
 CONCAVE SLOPE  
 CONTOUR  
 CONVEX SLOPE  
 CROSS ROAD  
 CULVERT  
 ELEVATION  
 FIRE PLAN SKETCH  
 GRID COORDINATES  
 HILL**

**MAGNETIC NORTH  
 MILITARY CREST  
 NORTH STAR  
 PACE COUNT  
 PEAK  
 RAVINE  
 ROAD JUNCTION  
 SADDLE  
 SKYLINE  
 TOPOGRAPHICAL CREST  
 TRUE NORTH  
 UNIMPROVED ROAD  
 UNDERPASS  
 VALLEY**



Fireteam leaders identify rally point using grid coordinates.



Marine determining terrain conditions for upcoming mission.



Marine shows the proper technique in shooting an azimuth using a lensatic compass.

## PUZZLE 14

O N O I T C E R I D E G N A H C D T D Z Q V E X H  
 B M P A C T L X E K J N N H T E X I E I H D G A E  
 J N O L E H C E W D T H P M E F S P O B R Z N Q M  
 E H O M F P Z M X X A B K P U P I S Q A D D I S I  
 C J F K Y I W Y R B A E S V E L K H W C A O R P T  
 T P M B F D E B E N O E L R P P O R S N U O I U E  
 I R E H S I M R I K S P S M T P O C D A Q N F E L  
 V L J Q E G N A R A F E E N A F D A M G S E E S B  
 E A F P V C Y B E O W U I N B E R D Q R G R C O U  
 R S C S Y M W R Q V D O H C U M T H E J O F N L O  
 A S H E I X C R S W P Y O Y S P A E R N J F E C D  
 L E S I A E N E M Y I N S I G H T U R B M R M H D  
 L M I T D S M O L U C C G C O L U M N I G V M A Q  
 Y B N V D Y E L O E X N Q Y B D O R P V F W O S Q  
 P L G I M T A F A T A A L X R F R C L B W Q C T T  
 O E N P X R A L I L A O C A M O U F L A G E J Y L  
 I R R E Y O M K S R F L E E Q B T K T I X P C A R  
 N X Z C L E W O E F I A P C T L A L K D P T T M Q  
 T U O M N E G S W C O N F L F Z A K H N Z C K B B  
 Z R J T D K L W A W O C G A R H N S S C A L I U E  
 I G U G A D Z L A I V V Z L E L X T M Q O D G S R  
 I I E O J S F Z Y Q R I E D E V X E B U G Z Q H N  
 Z Z C B U R Y U X O X J A R Z V H Q F T Q X A T J  
 M C K D L T A W R Y Z O B N E B Z C S A V O R P A  
 N O P E U T H Q F G Y M M J Y R H S U Z M J K K N



Marines keeping alert for any suspicious movements during this column patrol.



Marines conducting a tactical patrol through outskirts of urban area in Iraq.

**ASSEMBLE**  
**CAMOUFLAGE**  
**CEASE FIRING**  
**CHANGE DIRECTION**  
**CLOSE UP**  
**COLUMN**  
**COMMENCE FIRING**  
**CONCEALMENT**  
**DECREASE SPEED**  
**DISPERSE**  
**DOUBLE TIME**  
**ECHELON**  
**ENEMY IN SIGHT**  
**FIRE TEAM LEADER**  
**FORM COLUMN**  
**FORWARD**

**FREEZE**  
**HALT**  
**HAND AND ARM SIGNALS**  
**HASTY AMBUSH**  
**OBJECTIVE RALLY POINT**  
**OPEN UP**  
**PLATOON**  
**RALLY POINT**  
**RANGE**  
**SHIFT**  
**SKIRMISHER**  
**SQUAD**  
**TAKE COVER**  
**WEDGE**

V L M E O E D K N H B C S P Z Q E C N C Q Y T M  
 G R G G X R Y Z O U A C O Y G H C N O O O V H C A  
 L R A J J N I I E R W Y V P S N A O N I U N K T E  
 T C T F X M T F R N G N E B E P I Z E T N G F M T  
 E I L D R I F A E W I Y R G M Q I N O I T I S C G  
 N B Q E L A G B I D K A I H C G X E F S E S W V N  
 H C M O A E W O N B A L T L S S U T D O R S L L I  
 G M M D Z R E A B B L L O N K R O A I P A A Q K D  
 P E I Y E A P A L E L S I G O G N E S K T O B W N  
 D Z R M J M C A T L E A O F J C N B P C T O T F A  
 T U N S C O I N X A I D V I N E S Q E A A F R E L  
 U I S F J V I L I I W R Z R L E S E R T C H E U N  
 J C O U N T E R I N S U R G E N C Y S T K P U C O  
 R R F U A H S I Z T I O L E A T X Y I A S X R D I  
 E O T B J U M R J U A O F T U B N M O P W I A E L  
 V R M O P G D W Z G N R V A Z G E I N A T E B A A  
 S O R P F K Q F U K X X I M D G R A R I T O B D T  
 C V O D I S P E R S I O N Z H V L E C U G B N L T  
 B R T N E M E C A L P S I D E V A A T H O N R I A  
 T N I O P N O I T C E L L O C D L N C N H T H N B  
 C H A I N O F C O M M A N D F P Z A C E U E N E P  
 B O U N D E D N A M M O C X O M T O Q E F O A O M  
 W P Q S Z Y K Y X O T T Z I C T Y V N F M B C D C  
 C U T J D B V Q W L G Z N I A W B S W E G F P O L  
 Z G V G W W I T M F E T V T V C E T J J C B K M C

**ASSIGN  
 ATTACH  
 ATTACK POSITION  
 AXIS OF ADVANCE  
 BARRAGE  
 BATTALION LANDING TEAM  
 BEACH HEAD  
 BEATEN ZONE  
 BOUND  
 CHAIN OF COMMAND  
 CLEAR  
 CLOSE AIR SUPPORT  
 COLLECTION POINT  
 COMBAT INTELLIGENCE  
 COMMAND**

**CONE OF DISPERSION  
 CONTAIN  
 CONTOUR INTERVAL  
 COUNTER ATTACK  
 COUNTER GUERRILLA WARFARE  
 COUNTER INSURGENCY  
 COVER  
 CRITICAL POINT  
 DEADLINE  
 DEMILITARIZED ZONE  
 DEMOLITION  
 DISPERSION  
 DISPLACEMENT  
 ENFILADE FIRE**



Marines preparing for their next demolition mission.



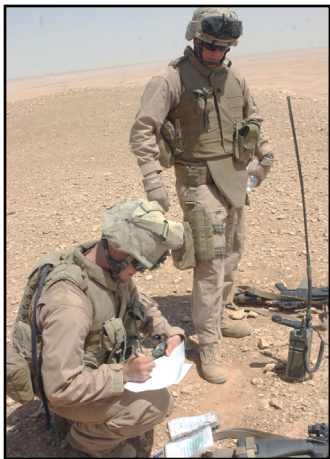
Marine radios in for close air support during offensive operation.



Marines establishing defensive position for possible assault.

**PUZZLE 16**

I U C D R G H A R A S S I N G F I R E M F Y L G Q  
 F N T A O E Z Y F Y F E S O L Q M G L U O R Q D S  
 H O F M P B G Z I I A R I I U I X D K O R O G C N  
 F E Q I M D R I R Q E H N T O G S Y B L W T H B M  
 B B N J L F G E S D N E Z C J Y A Z E H A C N M E  
 E Q A I B T M D R T O J E A M C G R V B R E F G D  
 E X R U L I R O S F R C V C B F Z U I Y D J I L P  
 H N W M S P L A D B R A V I U A R M T K O A E S U  
 T D I S I A I E T O U R T V Y B A I C V B R L W U  
 Y B I L R S P C F I Q G S I E F N Y E T S T D X W  
 Y O T E E A Y N S I O Y Q C O U G B J O E T O N F  
 N C N A R V I Q N I A N U Y T N E T B N R A F B V  
 K E N T C E I P B K D H I R W G F J O V V L F T U  
 G F U E R T Y T Q S B E O A W M J I T Y E F I A W  
 D R L T G C I O C E B P R T E S R S R B R W R E P  
 E K Z P P R W C I E P R Y I F N M A N E U V E R S  
 K F H D H M U A S O T O E L F M I E G A S B Q Y V  
 C G Y T B Q Q S F N O O E I E R I F G N I Z A R G  
 D Y X P N T R O N S W X R M W G G F A R C F Z T V  
 L J R H P K T F S I T S O P N O I T A V R E S B O  
 T I N U L E X T G Z K Z N I L D T I M L W Q J H Z  
 M F W D G U O K C E O E U N Q A D R B J I I L N E  
 A S Y R J G W F L E E T M A R I N E F O R C E Z Z  
 M J A Q C J M G P V D L W X T F X I B O G P R X U  
 M T V C G G K G O F C P L F H T D R F L S F Z L N



Marine determining unit position from compass coordinates.



Marine scouting area for target of opportunity.



Marines simulate raid during Basic Urban Skills Training exercise.



Marines conducting a combat maneuver from an amphibious assault vehicle during training exercise in Iraq.



Marines maneuver through burning oil field during offensive operations in Iraq.

- FIELD OF FIRE**
- FINAL PROTECTIVE LINE**
- FIRE DISCIPLINE**
- FIRE MISSION**
- FLAT TRAJECTORY**
- FLEET MARINE FORCE**
- FORWARD OBSERVER**
- GENERAL ORDERS**
- GRAZING FIRE**
- HARASSING FIRE**
- INFILTRATION**
- INSURGENCY**
- LINE OF DEPARTURE**
- MANEUVER**
- MILITARY CIVIC ACTION**
- OBJECTIVE**
- OBSERVATION POST**
- RAID**
- RANGE**
- REGISTRATION FIRE**
- REINFORCE**
- TACTICS**
- TARGET OF OPPORTUNITY**
- UNIT**

# CROSSWORDS

## PUZZLE 17

In the following crossword puzzles numbers are spelled out. For example, "300" would be written "Three Hundred" with out any spaces.

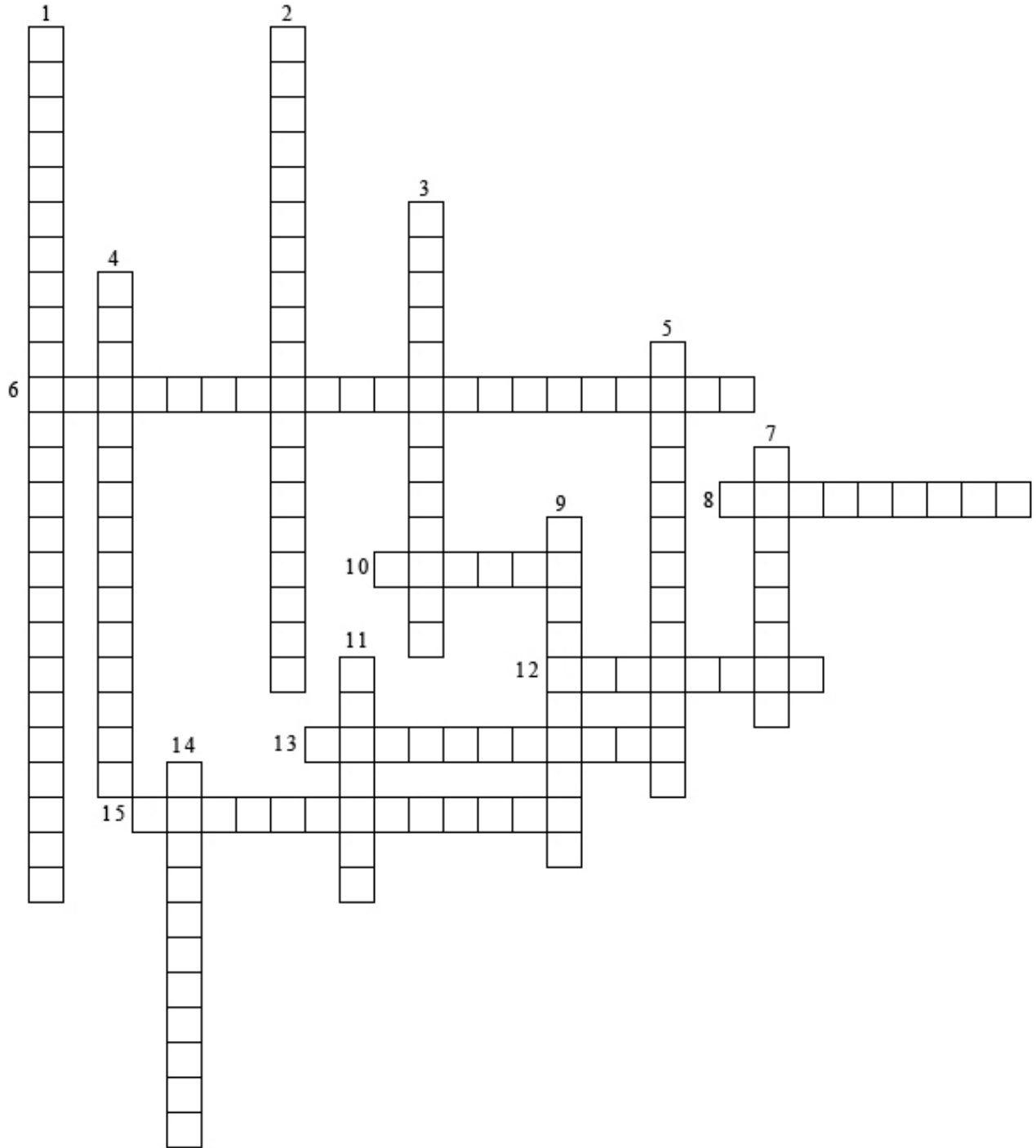
The diagram shows a surveying compass with the following callouts:

- 1 Down: Points to the vertical axis of the compass housing.
- 2 Down: Points to the top of the compass housing.
- 3 Down: Points to the bottom of the compass housing.
- 4 Down: Points to the vertical axis of the compass needle.
- 5 Down: Points to the top of the compass housing.
- 6 Across: Points to the horizontal axis of the compass needle.
- 7 Across: Points to the top of the compass housing.
- 8 Across: Points to the lens on the left side of the compass.
- 9 Across: Points to the horizontal axis of the compass needle.
- 10 Across: Points to the horizontal axis of the compass needle.
- 11 Down: Points to the vertical axis of the compass needle.
- 12 Across: Points to the horizontal axis of the compass needle.
- 13 Across: Points to the horizontal axis of the compass needle.

The crossword puzzle grid below the diagram consists of 13 numbered starting points for words:

- 1: 1 Down (vertical)
- 2: 2 Down (vertical)
- 3: 3 Down (vertical)
- 4: 4 Down (vertical)
- 5: 5 Down (vertical)
- 6: 6 Across (horizontal)
- 7: 7 Across (horizontal)
- 8: 8 Across (horizontal)
- 9: 9 Across (horizontal)
- 10: 10 Across (horizontal)
- 11: 11 Down (vertical)
- 12: 12 Across (horizontal)
- 13: 13 Across (horizontal)

## PUZZLE 18

**Did you know...**

*“Semper Fidelis” (“Always Faithful”). That Marines have lived up to this motto is proved by the fact that there has never been a mutiny, or even the thought of one, among U.S. Marines. Semper Fidelis was adopted about 1883 as the motto of the Corps. Before that, there had been three mottoes, all traditional rather than official. The first, antedating the War of 1812, was “Fortitudine” (“With Fortitude”). The second, “By Sea and by Land,” was obviously a translation of the Royal Marine’s “Per Mare, Per Terram.” Until 1848, the third motto was “To the Shores of Tripoli,” in commemoration of O’Bannon’s capture of Derna in 1805.*

**Across**

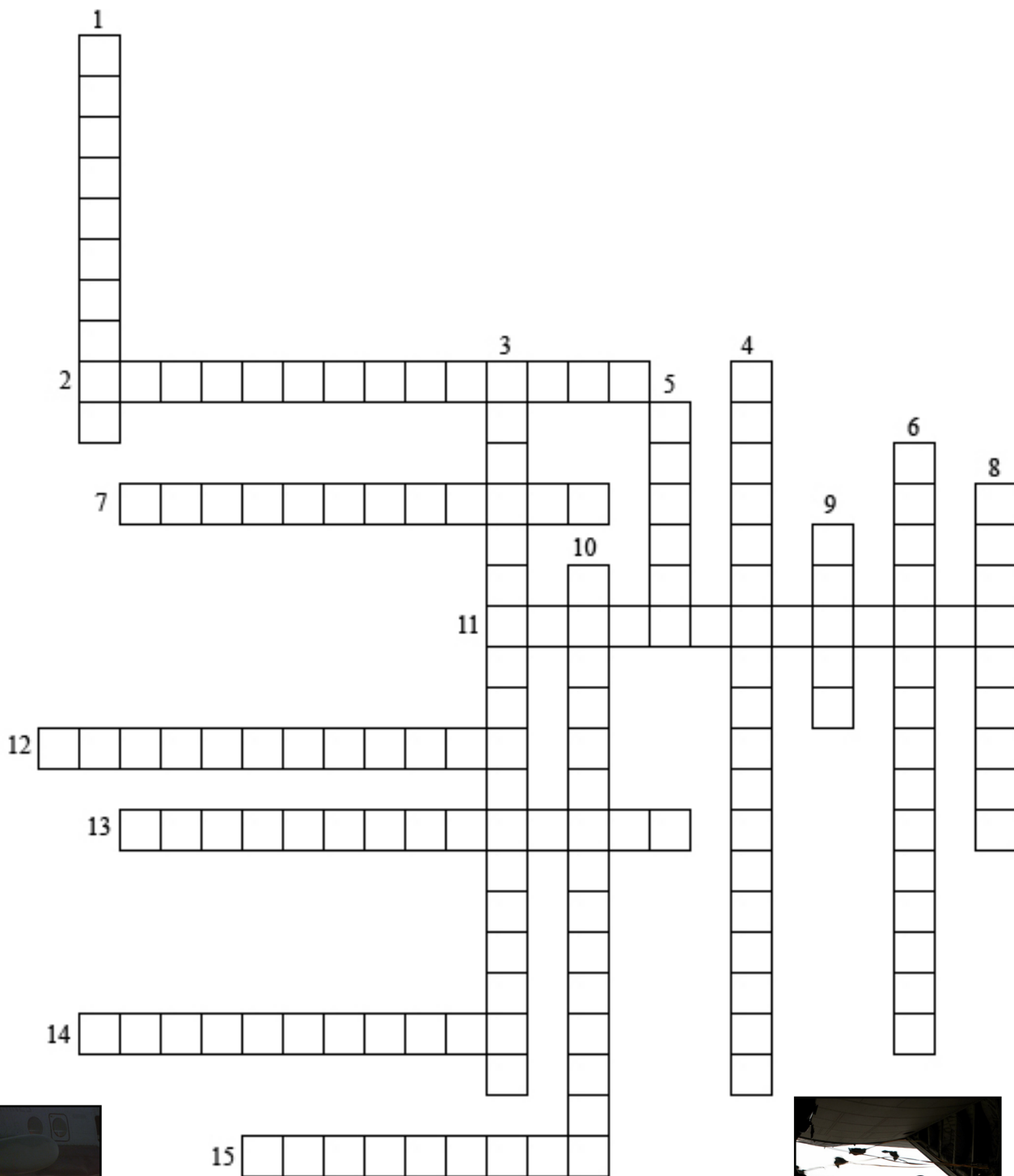
6. What is the primary goal of the Marine Corps?
8. 782 Gear should be washed with \_\_\_\_\_ and soap.
10. What is one of the symptoms of a hang over?
12. What is the translation of the German word “Teufel Hunden”?
13. Under the Law of war principles, a Marine should collect and care for wounded whether \_\_\_\_\_
15. What uniform should be worn when checking into a new unit?

**Down**

1. What is one of the lowest convening authorities of a general court-martial?
2. What battle gave Marine Officers and NCOs the right to wear the “Blood Stripe” on the dress trousers?
3. Who extends the privilege to wear civilian attire?
4. On what uniform are the large medals authorized for wear?
5. Which Marines can carry an all black plain standard or collapsible umbrella at their option during inclement weather except in the utility uniform?
7. What National Ensign is displayed on Sundays and Holidays?
9. The four authorized positions of rest are \_\_\_\_\_, at ease, rest and fall out.
11. What is Article 121 of the UCMJ?
14. Alcohol abuse alters behavior by adversely affecting \_\_\_\_\_.



**PUZZLE 19**



Marines fast roping from CH-46 Sea Knight helicopter onto ship flightdeck.



Marine Sniper sights in on his target with 50 caliber rifle.



Marine paratrooper jumps from KC130 aircraft during training exercise.



**Across**

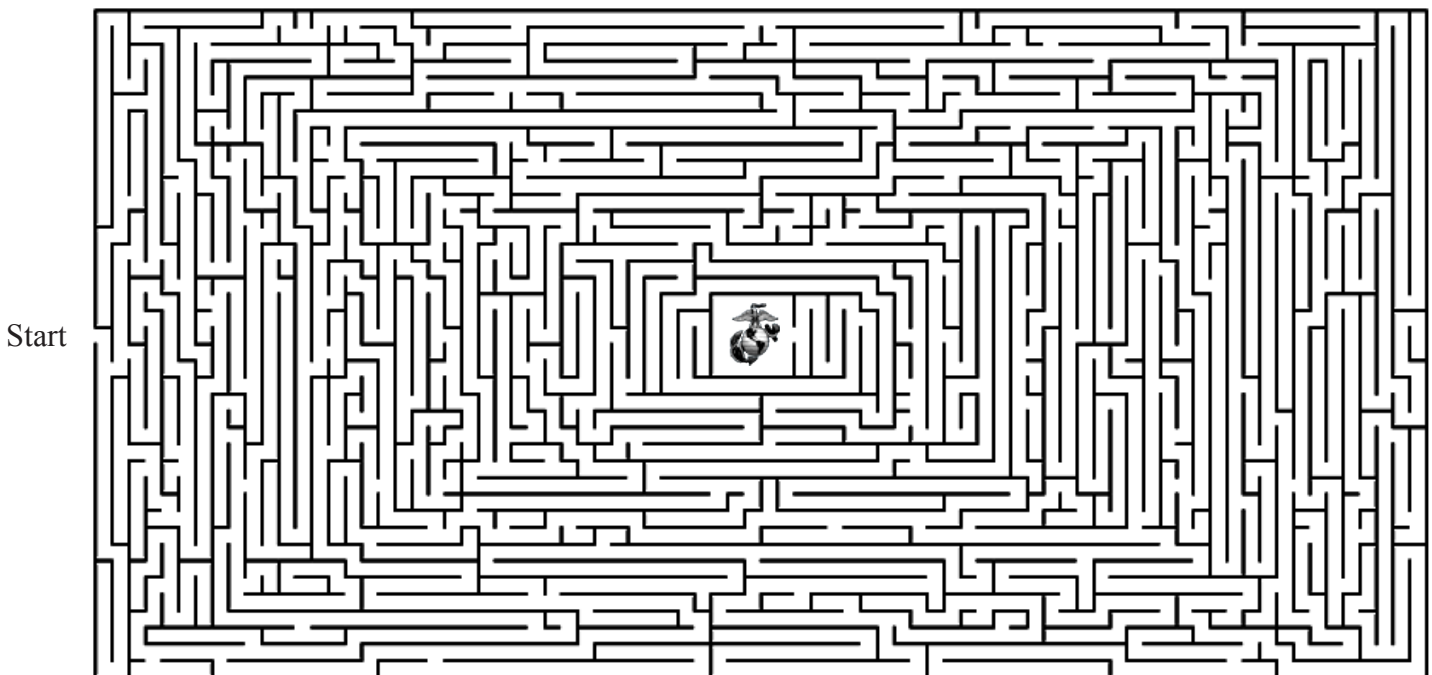
2. A \_\_\_\_\_ of the squad column is that it is easy to control and maneuver.
7. What are the two types of slings used for the firing positions?
11. What is one STD that is not curable?
12. Which code of conduct article contains the statement, "If I am captured, I will continue to resist by all means available...?"
13. Duty relationships and social and business contacts between and among Marines of different grades is defined as?
14. The effort of an individual used against another to cause death, substantial risk of death or serious bodily harm is known as \_\_\_\_\_.
15. When engaging multiple targets, the first target is engaged with \_\_\_\_\_.

**Down**

1. What is one of the most effective types of birth control?
3. "To walk my post in a military manner" refers to which order?
4. The Marine Corps policy on hazing is \_\_\_\_\_.
5. Engaging the enemy with individual or crew-served weapons and exposure to direct or indirect enemy fire is defined as?
6. What is represented by the first two numbers of the four digit military occupational specialty designation?
8. Security Classifications from highest to lowest are \_\_\_\_\_, Secret, and Confidential.
9. What is the acronym for the five-paragraph order?
10. Violent, \_\_\_\_\_ and sounds are one of the nine elements encountered in a combat environment.

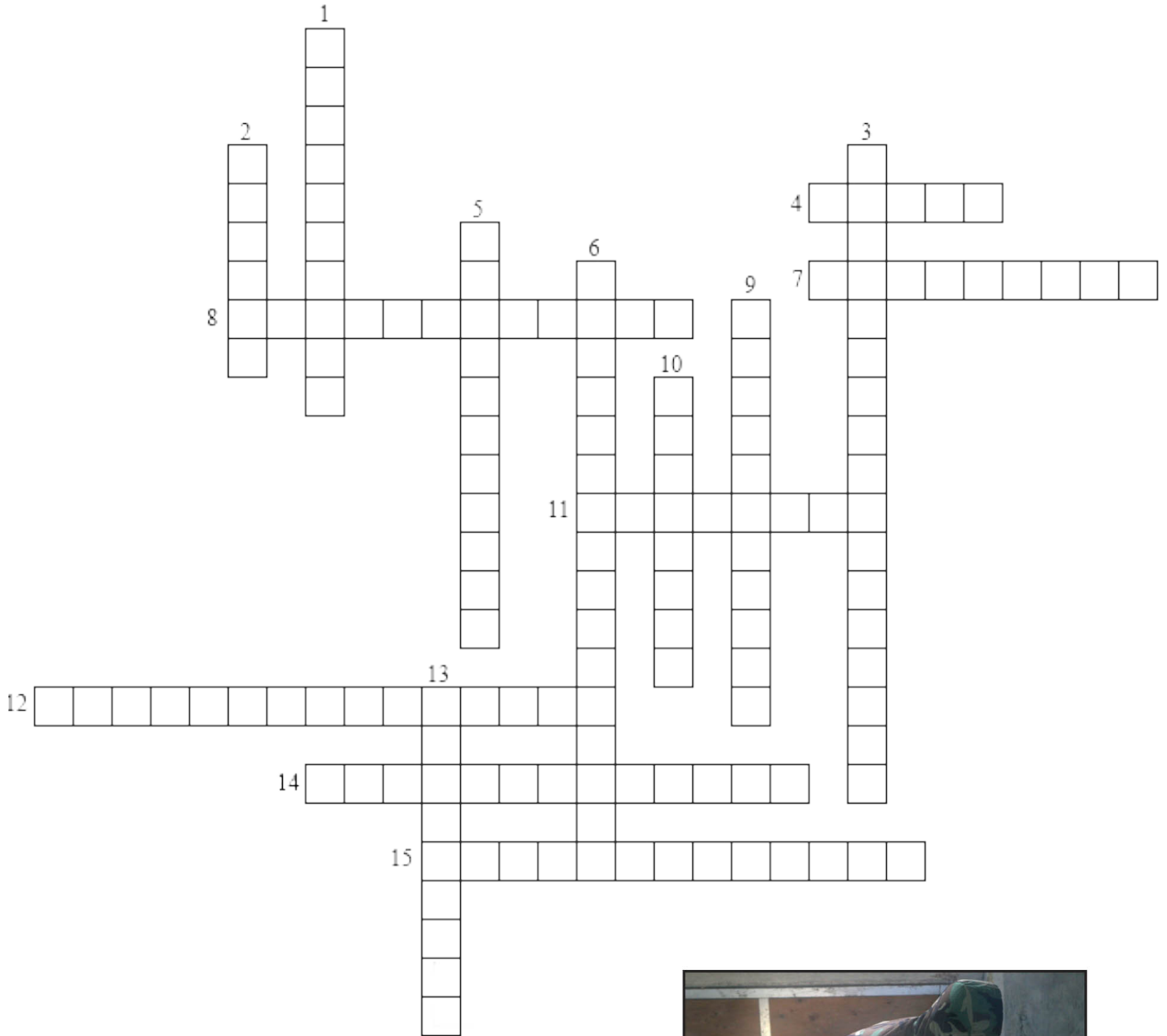
-----

**Time for a break... How fast can you get from "Start" to the "Marine Corps Emblem"... Ready??? GO!!!**



This is a timed event. There is not a solution for this puzzle in the back of this book.

**PUZZLE 20**



Marine clearing his gas mask as part of a step to ensure he has a tight seal.



Marine exercising in gas chamber to ensure there is a good seal from mask on his face.



Marine drinking water through Gas Mask after exercising in gas chamber.



These Marines exiting gas chamber know how to properly clear their mask and ensure a good tight seal is on the mask they wear.

**Across**

- 4. What Marine Division is located in Okinawa Japan?
- 7. \_\_\_\_\_ is indicated on a fire plan sketch by a break in the solid black lines representing grazing fire for automatic weapons.
- 8. What is the illumination radius for the M18 trip flair in meters?
- 11. What was the name of the plane that dropped the first atomic bomb?
- 12. What is an E-7 in the Marine Corps?
- 14. What does the "L" stand for in the acronym BLISS
- 15. George Thompson and \_\_\_\_\_ were the first two African Americans to enlist in the Marine Corps on June 1, 1942.

**Down**

- 1. When demonstrating the hand and arm signal for range, each finger exposed represents \_\_\_\_\_ meters.
- 2. What is the acronym for how and what to report on the enemy?
- 3. What is an E-7 in the Navy?
- 5. \_\_\_\_\_ is the easiest patrol formation to control and maneuver?
- 6. What article applies to the rights of the accused?
- 9. What hides you from enemy observation?
- 10. What should be shouted when reacting to indirect fire when on foot?
- 13. \_\_\_\_\_, \_\_\_\_\_, \_\_\_\_\_, is the vocal alarm for a chemical/biological attack?

**A Little Extra Motivation**      Unscramble the words on the left and solve the puzzle for each line. Once complete, match the numbers in each line with the numbered box at the bottom for a little extra MOTIVATION!!!

HYECTS LURPEL

--	--	--	--	--	--	--

1

--	--	--	--	--	--	--

7      10

VEDLI GDO

--	--	--	--	--

4

--	--	--

TISFR TO HIGTF

--	--	--	--	--

3

--	--

--	--	--	--	--

6

SDRES LUEB MORFINU

--	--	--	--	--

--	--	--	--

2

--	--	--	--	--	--	--	--

8      12

ADN DAYLE

--	--	--

9      11

--	--	--	--	--

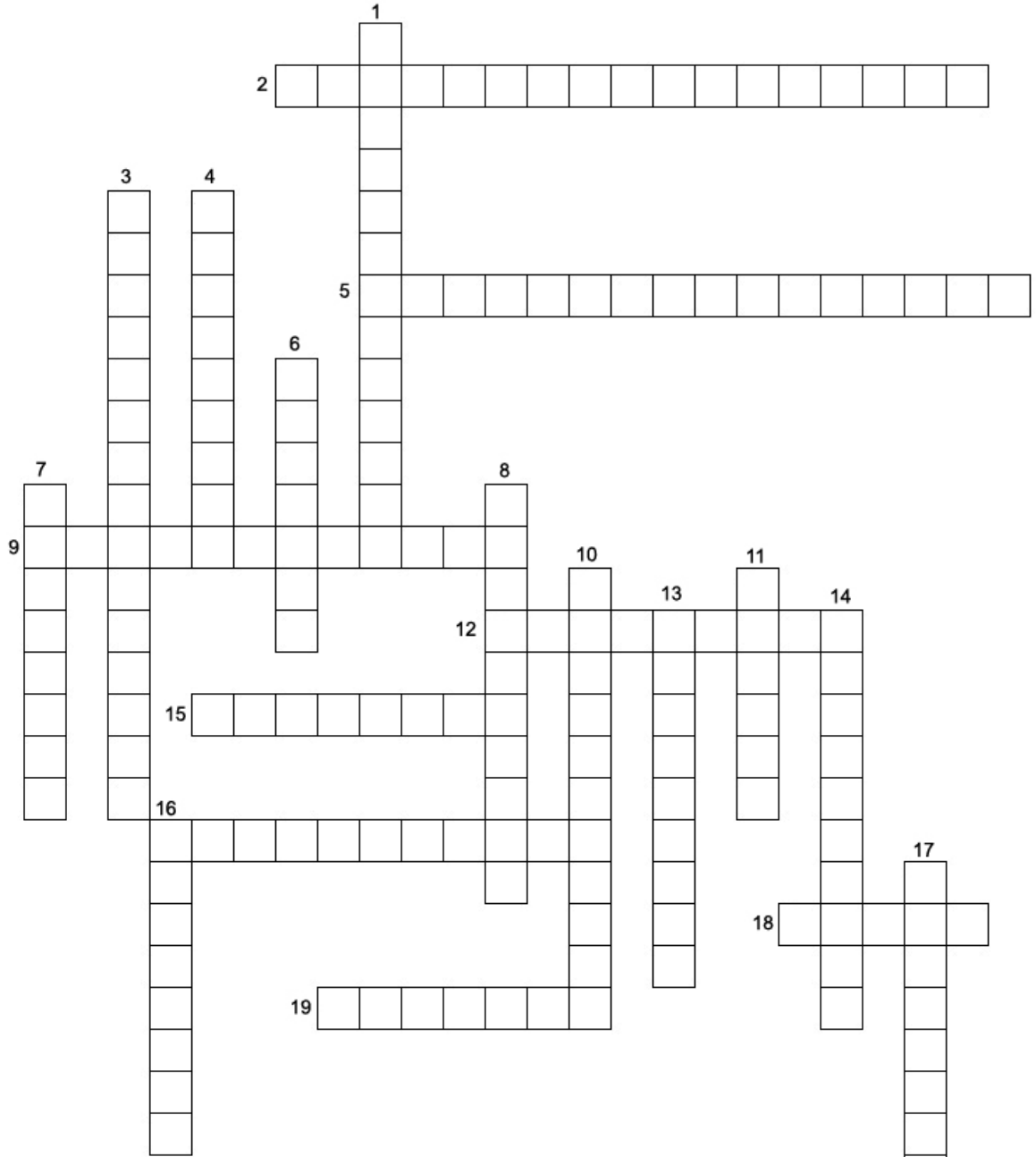
5

Answer

--	--	--	--	--	--	--	--	--	--	--	--	--

1    2    3    4    5    6    7    8    9    10    11    12

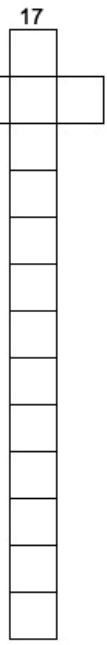
**PUZZLE 21**



Marines rendering a rifle salute.



Marine officer renders a hand salute.



**Across**

2. What court-martials may result in felony conviction?
5. 5th and 6th Marine regiments are authorized to wear the \_\_\_\_\_ on their uniforms?
9. Diseases associated with tobacco include cancer, upper respiratory diseases and \_\_\_\_\_.
12. A way to protect yourself against \_\_\_\_\_ is to keep a low profile.
15. The five stresses of combat are extreme risk and fear, \_\_\_\_\_, discomfort and fatigue, casualties and boredom.
16. When assessing the shot group, the first thing the shooter must do is \_\_\_\_\_
18. How many counts are in Inspection Arms?
19. The 3rd Marine Aircraft Wing is located in \_\_\_\_\_, California.

**Down**

1. \_\_\_\_\_ is one of the nine elements encountered in a combat environment.
3. Alcohol abuse interferes with the effective performance of Marines and is a threat to \_\_\_\_\_.
4. Camouflage is anything used to keep yourself, \_\_\_\_\_ and position from looking like what they really are.
6. The mission of a Marine taken hostage by terrorists is to \_\_\_\_\_.
7. When communicating letters using proper radio procedures, the \_\_\_\_\_ alphabet is used.
8. The rank is centered on the \_\_\_\_\_ of the flack jacket
10. Which Code of Conduct article starts out “If I become a prisoner of war...”
11. The risks of combat are the possibility of being \_\_\_\_\_ or wounded.
13. “Inspection arms” is a 7-count movement from “\_\_\_\_\_”.
14. You must serve two years of active duty service to begin in-service use of the \_\_\_\_\_ GI bill.
16. If there is no immediate threat the rifle is carried at the \_\_\_\_\_ position.
17. “When questioned, should I become a prisoner of war, I am required to give name, rank, \_\_\_\_\_, and date of birth”.

---

***Military Salutes: Customs and Traditions***


---

*A unique aspect of military courtesy is the salute. It is a gesture of respect and sign of comradeship among military service personnel. Accordingly, the salute is a uniform gesture; meaning that the highest in rank returns the salute in the same form in which it is rendered to him. By saluting first, no officer implies that he is in any sense inferior to the senior whom he salutes. The origins of saluting, like so many military customs and traditions, are shrouded in the past. It seems reasonable to assume, however, that the hand salute as now rendered in the military, evolved to some degree from the British navy. There is general agreement among scholars that the hand salute is actually the first part of “uncovering” in front of a senior. That practice gradually evolved over time into merely touching the cap, and became the present salute.*

---

**PUZZLE 22**

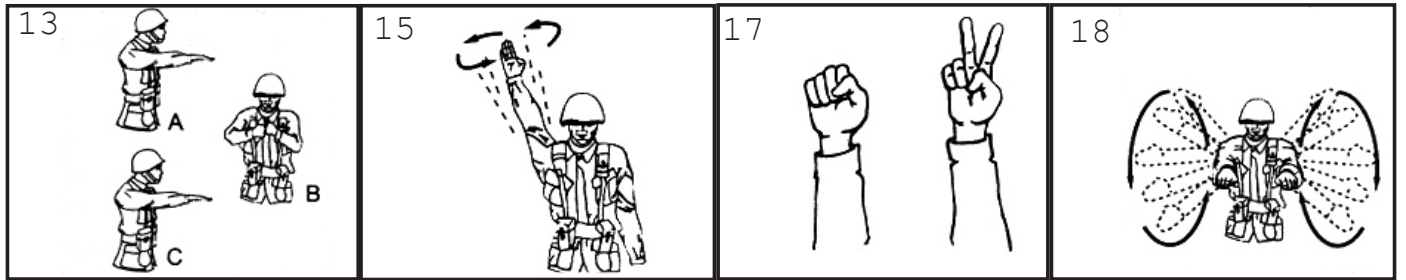
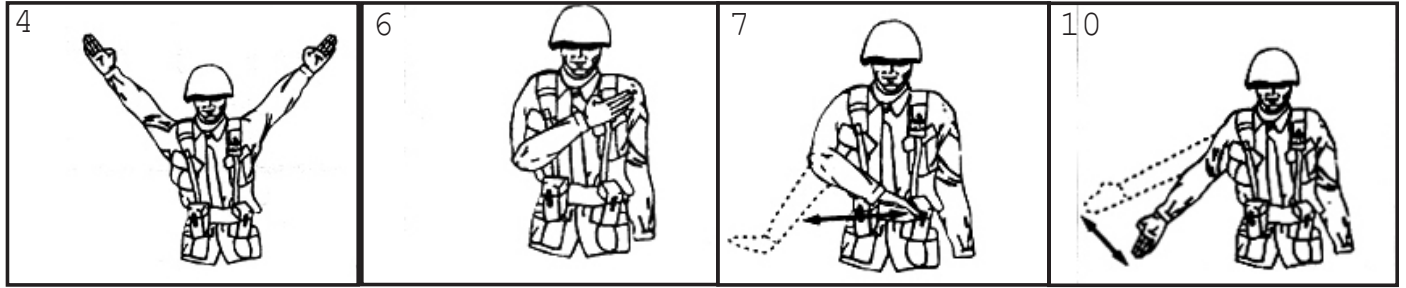
Identify the hand and arm signal on page 27 to complete the puzzle.



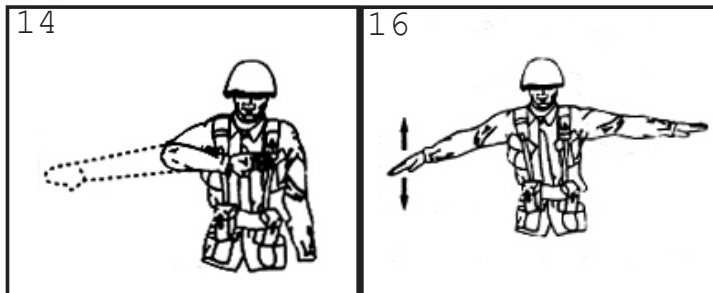
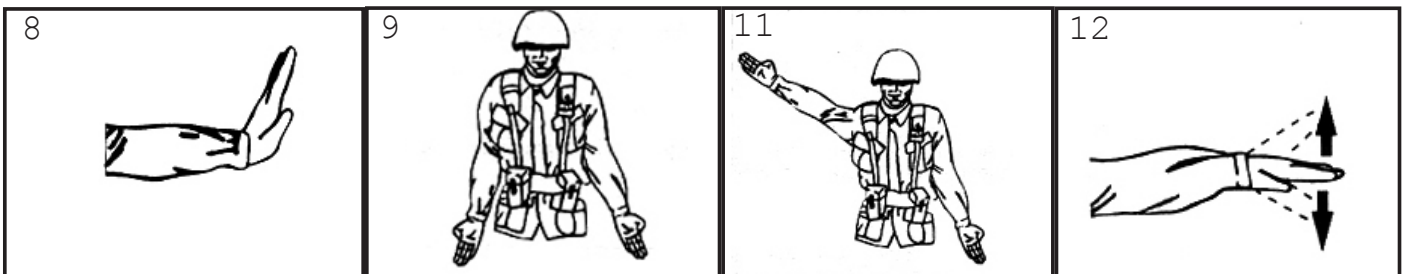
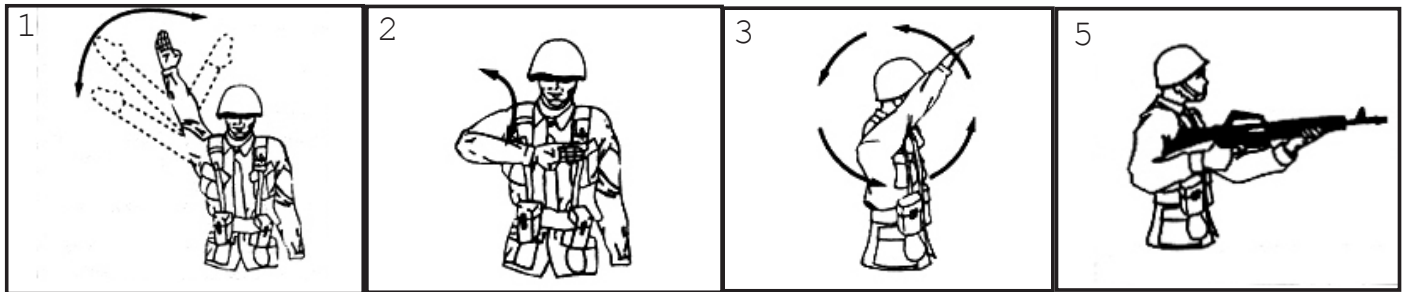
Marine squad leader signals to squad for next movement.



Marine sentry signals vehicle permission to proceed.

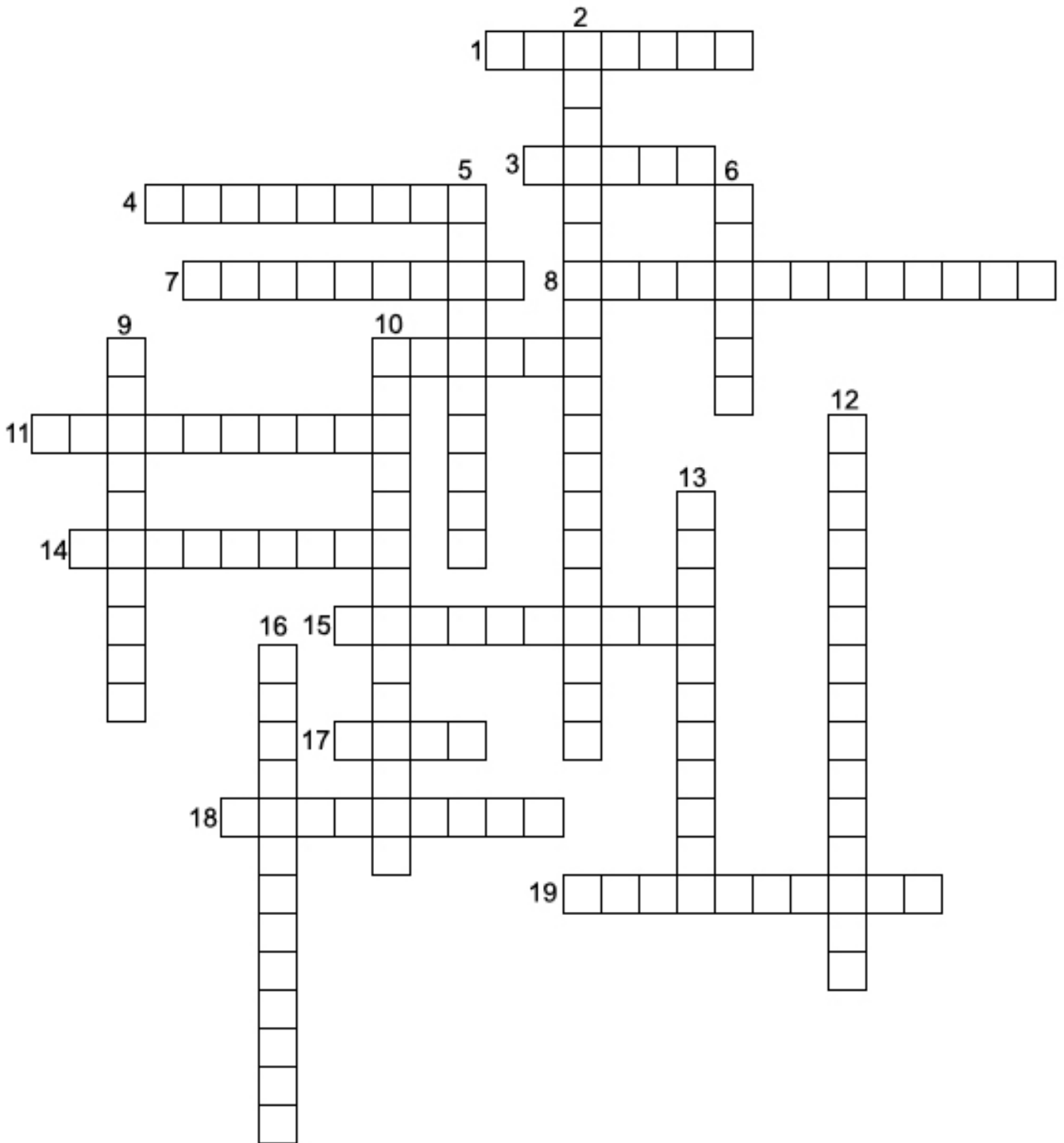


DOWN



**PUZZLE 23**

Identify the hand and arm signal on page 29 to complete the puzzle.

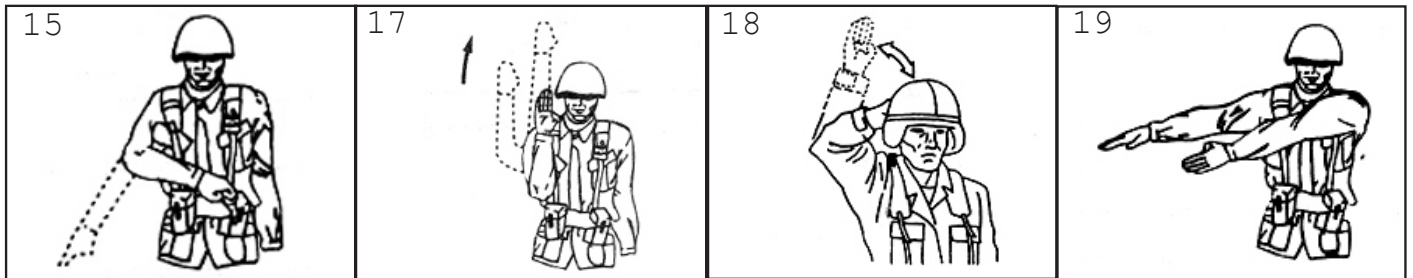
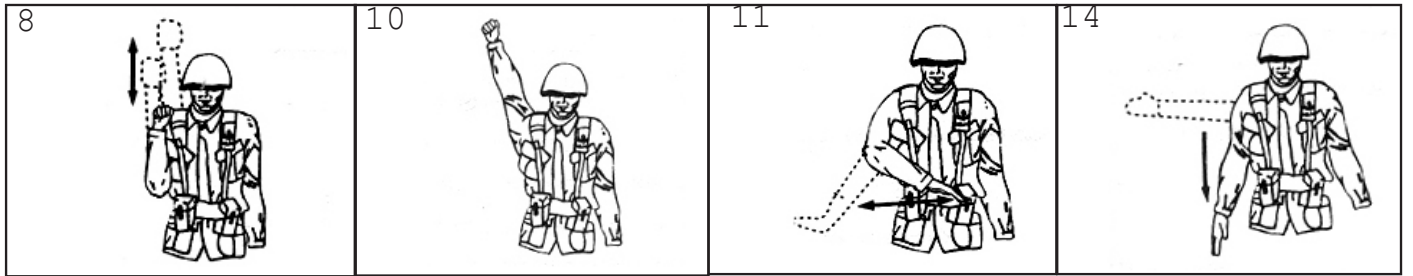
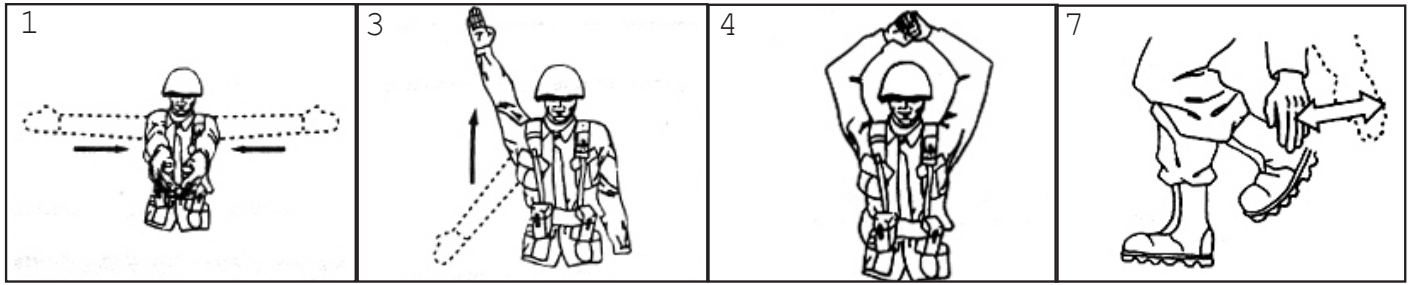


Marine uses hand signal to members of squad to double-time.

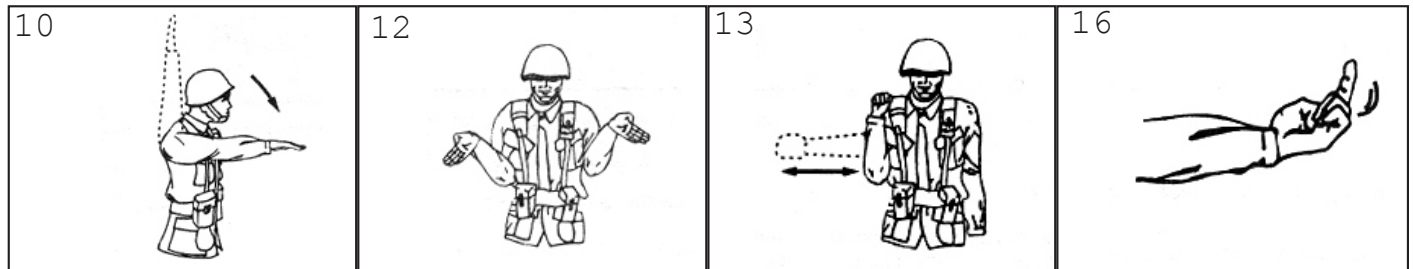
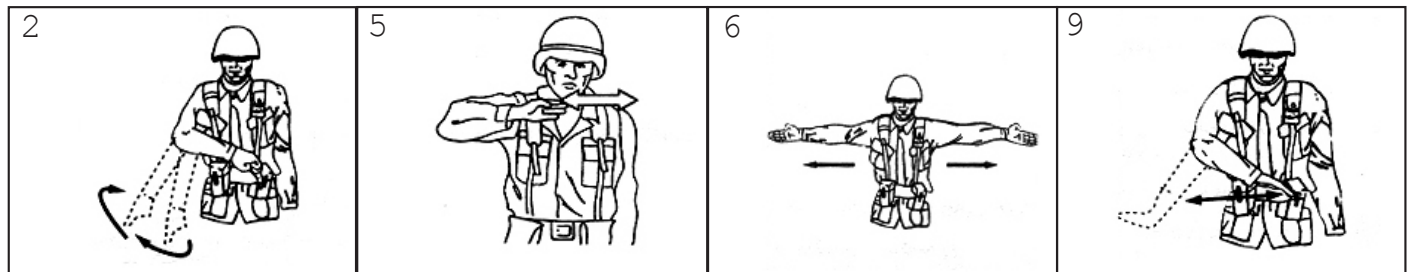


Marine signals approaching vehicle to halt.

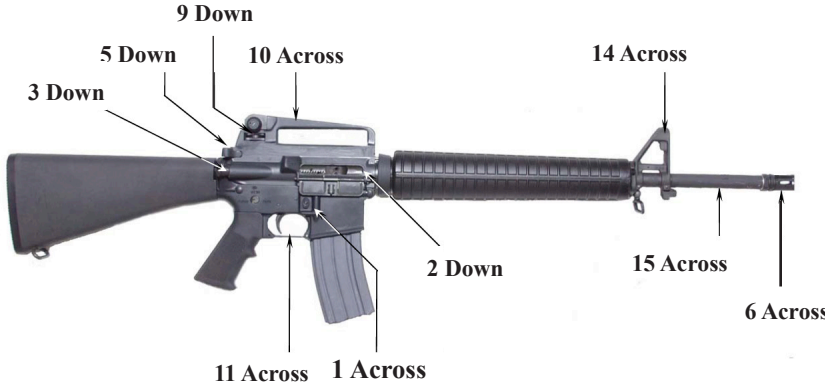
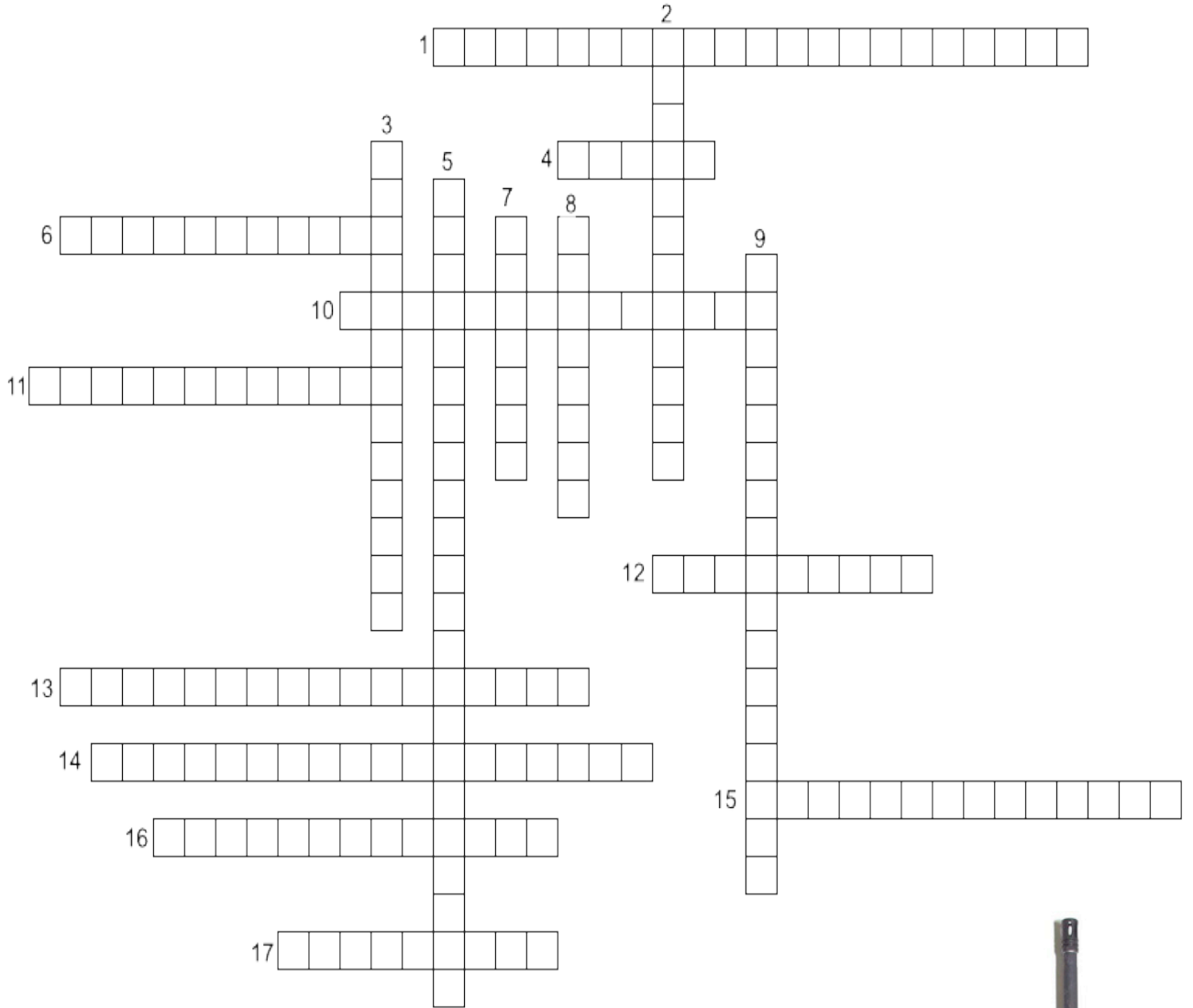




DOWN



**PUZZLE 24**







**Letter Tiles** Unscramble the tiles by putting them in the correct order in the grid below to learn something very interesting. A hint is provided to get you started.

L	D	N	D	I	C	O	R	A	R	L	E	C	R	E	V	Y	M	.		
P	A	R	S	E	D	N	E	E	G	R	A	S	O	F	S	U	R	E	N	
R	O	U	T	O	E	M	T	E	A	I	A	L	N	G	T	H	I	N		
O	R	P	E	T	I	F	Y	E	S	E	<b>T</b>	<b>H</b>	E	N	D	R	N	C	L	O
I	G	N	<b>S</b>	<b>C</b>	G	O	A	N	F	T	N	A	V	T	H	E	T	H		
B	Y	R	S	.	T	H	E	B	L	E	T	U	M	A	H	E	A	R	E	
A	R	I	N	G	B	L	U	I	N	T	R	I	N	G	O	L	E	M	N	A
E	A	M	A	A	N	D	A	L	P	S	O	L	O	S	C	D	S			
A	L	F	I	C																

T	H	E	S	C															

**Did you know...**

The Marine Corps seal consists of the Marine Corps emblem in bronze; an American bald eagle is depicted with wings displayed, standing upon the western hemisphere of the terrestrial globe, and holding in his beak a scroll inscribed with the Marine Corps motto "Semper Fidelis" with the hemisphere superimposed on a fowl anchor. The seal is displayed on a scarlet background encircled with a Navy blue band edged in a gold rope rim and inscribed "Department of the Navy, United States Marine Corps" in gold letters.



**PUZZLE 28****PUNITIVE ARTICLES OF THE UCMJ**

Match the Article with the offense by putting the letter of the offense on the line next to the article that it matches (all of the articles are not listed here). We have completed the first one for you.

Article 77	<u>  Q  </u>	A. Misbehavior before the enemy
Article 78	<u>      </u>	B. Drunk on duty
Article 79	<u>      </u>	C. Desertion
Article 80	<u>      </u>	D. General article
Article 81	<u>      </u>	E. Assaulting or willfully disobeying superior commissioned officer
Article 82	<u>      </u>	F. Conviction of lesser included offenses
Article 83	<u>      </u>	G. Resistance, flight, breach of arrest and escape
Article 84	<u>      </u>	H. Cruelty or maltreatment
Article 85	<u>      </u>	I. Fraudulent enlistment, appointment, or separation
Article 86	<u>      </u>	J. Arson
Article 87	<u>      </u>	K. Accessory after the fact
Article 88	<u>      </u>	L. Forcing a safeguard
Article 89	<u>      </u>	M. Aiding the enemy
Article 90	<u>      </u>	N. Rape, sexual assault, or other sexual misconduct
Article 91	<u>      </u>	O. Non-compliance with procedural rules
Article 92	<u>      </u>	P. Solicitation
Article 93	<u>      </u>	<del>Q. Principals</del>
Article 94	<u>      </u>	R. Malingering
Article 95	<u>      </u>	S. Disrespect toward a superior commissioned officer
Article 96	<u>      </u>	T. Mutiny and sedation
Article 97	<u>      </u>	U. Attempts
Article 98	<u>      </u>	V. Misconduct as a prisoner
Article 99	<u>      </u>	W. Conspiracy
Article 100	<u>      </u>	X. Spies
Article 101	<u>      </u>	Y. Contempt toward officials
Article 102	<u>      </u>	Z. Effecting unlawful enlistment, appointment, or separation
Article 103	<u>      </u>	AA. False official statement
Article 104	<u>      </u>	BB. Releasing prisoner without proper authority
Article 105	<u>      </u>	CC. AWOL
Article 106	<u>      </u>	DD. Failure to obey order or regulation
Article 107	<u>      </u>	EE. Unlawful detention
Article 110	<u>      </u>	FF. Subordinate compelling surrender
Article 112	<u>      </u>	GG. Murder
Article 113	<u>      </u>	HH. Missing movement
Article 115	<u>      </u>	II. Captured or abandoned property
Article 118	<u>      </u>	JJ. Improper use of countersign
Article 120	<u>      </u>	KK. Insubordinate conduct toward WO, NCO, or Petty officer
Article 126	<u>      </u>	LL. Improper hazarding of vessel
Article 134	<u>      </u>	MM. Misbehavior of sentinel or lookout

Identify the weapons below using the silhouette provided.  
Write the name of the weapon under each silhouette.

**PUZZLE 29**

1.



\_\_\_\_\_

2.



\_\_\_\_\_

3.



\_\_\_\_\_

4.



\_\_\_\_\_

5.



\_\_\_\_\_

6.



\_\_\_\_\_

7.



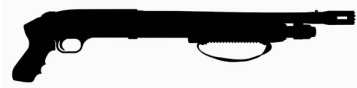
\_\_\_\_\_

8.



\_\_\_\_\_

9.



\_\_\_\_\_

10.



\_\_\_\_\_

11.



\_\_\_\_\_

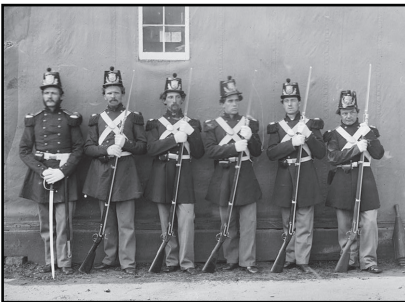
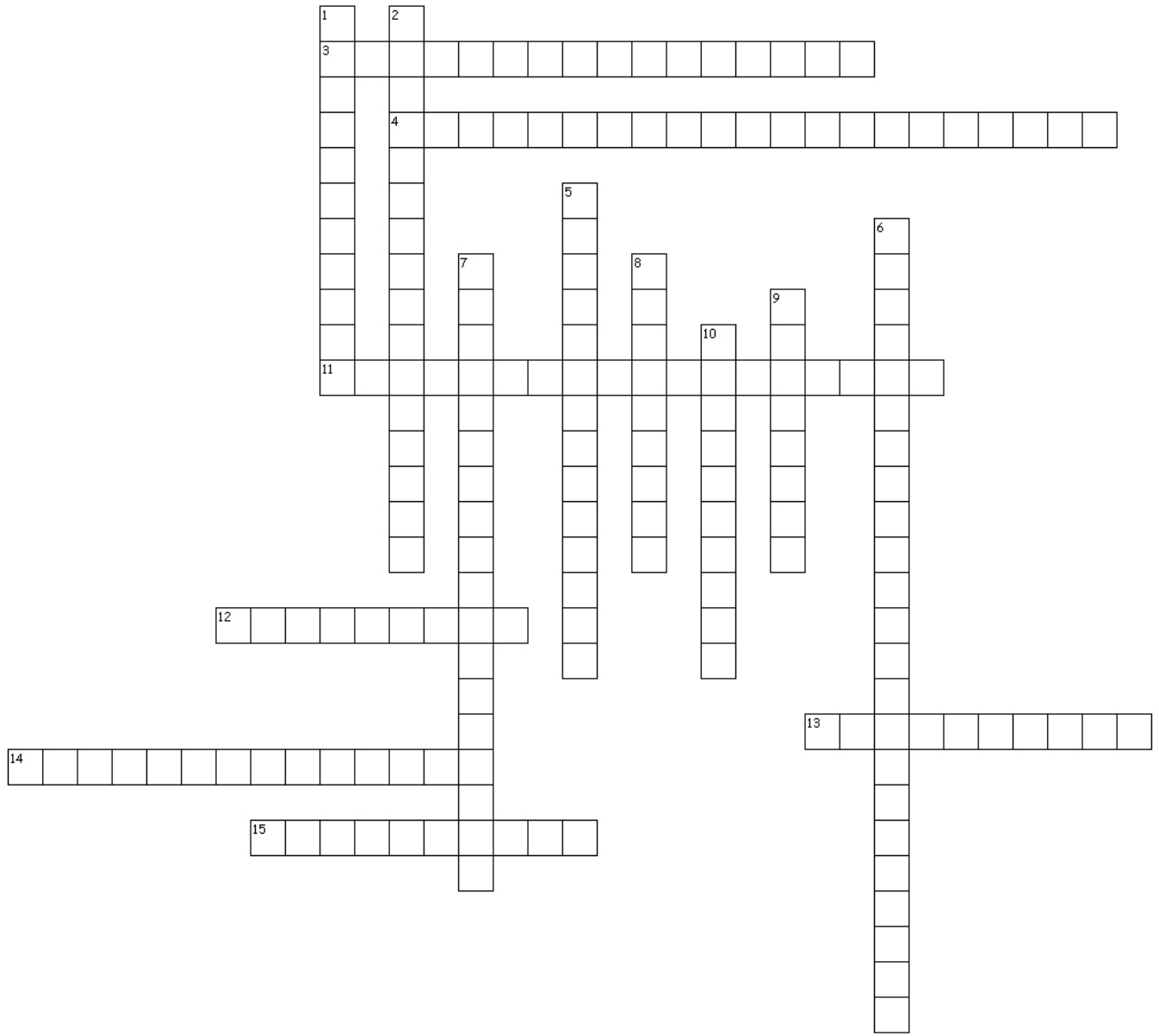
12.



\_\_\_\_\_

**PUZZLE 30**

**CAMPAIGNS**



Federal Marines on guard duty at the Washington Naval Yard, 1864.



Marine Lieutenant Baldomero Lopez, scaling the seawall during the Inchon landing on September 16, 1950.



Marines on patrol during Operation Hastings in South East Asia.



**Across**

3. In what war did Marines fight on two sides, pitting brother against brother?
4. This is sometimes referred to as “The Second Gulf War”.
11. This war was fought in Cuba, in 1898, where Marines seized Guantanamo Bay that to this day is used as an advanced naval base.
12. What war were Marines referred to by German soldiers at the Battle of Belleau Woods, as “teufel-hunden” or “devil-dogs” due to their fierce fighting?
13. This war was fought in the Caribbean, Central America, and portions of South America by Marines such as Major Smedley D. Butler, Gunnery Sergeant Dan Daly, and 2nd Lieutenant “Chesty” Puller.
14. This campaign was fought in the country of China, where Private Dan Daly would earn his first of two Medal of Honors.
15. The famous flag raising on top of Mount Suribachi, on the island of Iwo Jima, occurred in this war.

**Down**

1. Lieutenant Presley O’ Bannon led Marines across the desert from Alexandria, Egypt, to Tripoli in this war in 1805 to help restore the Turkish Viceroy, Prince Hamet to his throne. For his efforts the Prince presented Lt. O’ Bannon with the Mameluke sword, which is worn by Marine officers today.
2. The United States Marine Corps traces its institutional roots to the Continental Marines of this war, where two Battalion of Marines were recruited by Captain Samuel Nicholas on 10 November 1775, at Tun Tavern, Philadelphia, Pennsylvania.
5. This war was fought against IRAQ and its’ leader, Saddam Hussein, who invaded without provocation, the country of Kuwait. This war is sometimes referred to as, Operation Desert Storm.
6. This is the official name used by the U.S. Government for its involvement in Afghanistan and the war on terrorism after the terroristic attack on the United States on September 11, 2001.
7. The first verse of the Marines Hymn, “From the Halls of Montezuma”, refers to this war where Marines stormed and captured the Castle of Chapultepec.
8. This would be the last war Lieutenant General Lewis Burwell “Chesty” Puller would lead Marines.
9. This was an undeclared war fought entirely at sea between the United States and France from 1798 to 1800 where Marines served aboard naval vessels and fought.
10. In 1965, Marines conducted two important landings. The first landing would commit the Corps to the longest war in it’s history, the second landing was the Dominican Republic. What war would become the longest war in the Corps history from this first landing?



The official Marine Corps Battle Streamers are posted at Marine Barracks, 8th & I, Washington, DC.



The Marine Corps Emblem was officially adopted by the 7th Commandant of the Marine Corps, Brigadier General Jacob Zeilin, in November 1868.

**PUZZLE 31**

**Fallen Quotes** In the two puzzles below drop the letters in each line into the boxes of the same line to form words each letter will only be used once.

Unscramble the quote from President Ronald Reagan for further motivation

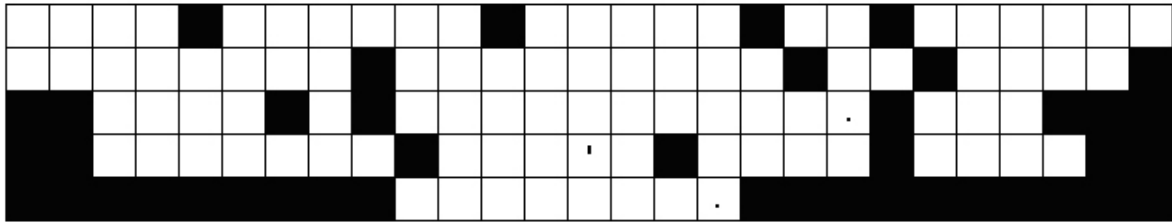
D F R

M E P E W O N D P T I N T H

F E T I N E P R O N L E E D A A I T H E E

L O M A D I M A P L E O S E R N N C V E E H T I Y

S I M A R E E O S D I F B E E M H G E N F T N A T R E



**PUZZLE 32**

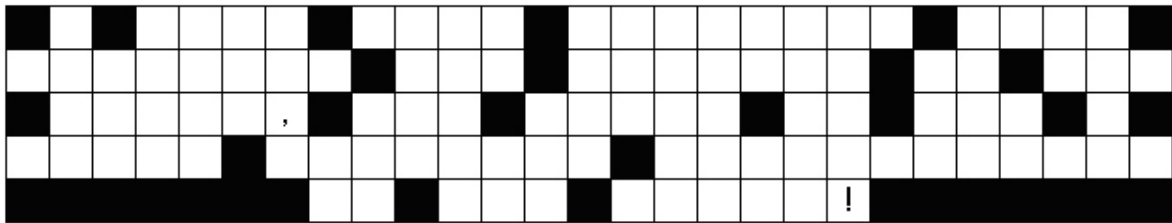
S T U I

I I T J T T I H W O I R A N O H

I S E N I N I A N D E N R A R R N D S A T T O M

V I N O R V F G N U H T T M E R R G N S I N F T T A E

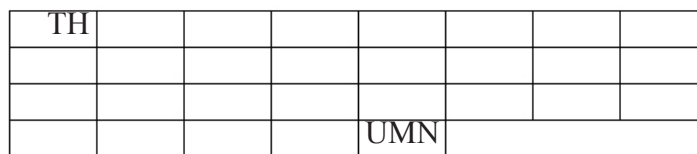
F F R H A T E I G H T H E G E O E L E E D Z A R I O N



**PUZZLE 33**

**Letter Tiles** Unscramble the tiles by putting them in the right order in the grid below to learn something very interesting. We have provided a hint for you to get started.

T H	E	R	C O L E	P	T H E	A T O	I L E	T H E
S T S	G U	O O N	O N	P O	I N	F R	I G H	
I S	P L	I D E	W H	E N	O N T	O F	L A T	
I N	O F	U M N	T H	T F				



Puzzle 1

A Z R Y S Y T I R G E T N I S D Q B Z L F Q I X W  
 R M E C T E N J R U Z S W V E F E I P K A S O O Y  
 D D T N K Z T R A P E Y V P L A O K F I S R D E F  
 S T C E S O C A V J K L E E R C O N D U C T O F Y  
 P L A I V L L D N L Y N S I A J D W L V T I O M B  
 N Z R C W Q J V P I D A N W N B E A T M Q V C Q Z  
 J R A I F J E S B A D G G O T W P M I C C Q E B W  
 M E H F J E C Z B N P R Q M V F M D N I N V F I R  
 R L C O M N O I Q E R T O T O S H T F V C F N L Z  
 N E U R C T L L N U T N G B F L T P S R D K Q Z F  
 I K S P F I G D I N Y I N W U E G A R U O C O P U  
 A E V P T H U C E E T T E O U S W G F I I W O O V  
 J J G O R H M A E L I S Z N D I S C I P L I N E  
 M Q D D A N E B N V A A P A S F R Y A I E C N E Y  
 E T L N E V S E V J Y T R T E W J J Y V D O S D X  
 V N C E O L R I X Q O I I C L Y Q T E Y E I F P U  
 E E T R C G W P B A L V T A F D M Q J I V X K D H  
 I K P H Y I Q Q Q I M E A T I O E S P R O C U Q V  
 X M U T U H T I N I L P B Y S T W M E D T W R J F  
 L I S E H S Y S S K C I L Y H T W P E W I C A E U  
 Z T F N P T I Z U I G Y T E N D U L H A O A P Q K  
 V Y G R V S F A L J Z H L Y E S V O P Q N B R S X  
 T O U C I M F S S E N E V I S I C E D F A O Q G W  
 X Q P J F O H X M M C D L O S T P B E V S V R T Q  
 Y J U D G M E N T L C J Z Z U P J X F B H N G K Y

Puzzle 2

L X M N A T L Y F C M D D L M Y W J N A P X H T  
 V A X S Q N L I D C O A E O L N Q L Z R M T N K N  
 D G R J G A T A E M A N J M Z H P I Y J A A A H A  
 T T K O L E P X H U O G D O O V S E L L E I S H E  
 R K A U P G X T M L T F N P R S X U L G U H U D G  
 T G E N E R A L O G L E U D A G G T R M C B A Z R  
 I L V S U E O C E G X J N L H O E E X W A T V Q E  
 L V I F Q S O C E T J E C A L N S N X F J J R U S  
 Z J A W L F D V E O A T H Z N T H A E F I E O B Y  
 C Z W G W F X Q U C S V G G S T O N H F G V B R R  
 H O V C P A X K S R N A I R B U G T I U A D A I E  
 H Z Q F V T F X I D K A I R Y S V E N B A L L G N  
 Y C T A B S I F Q U V E L W P M A N N B X V A A N  
 G L I E U T E N A N T C O L O N E L W E J K G D U  
 V Y O I E T M C N B L K V H N R D Y G Z R A R I G  
 B T J Z A L O Z S Y R G N C Y S V X X U L A S E R  
 M Z D V Z R T N A E G R E S R E T S A M T F L R E  
 K I I O P O N Y S E R G E A N T M A J O R G N G T  
 M R H O M K S U R Y C R S P H Z P S Y J N V I E S  
 P E R X Z M H R B O G T N A E G R E S L K T A N A  
 A A N Z T B U E C E J A N P T L M Z A S A S T E M  
 L W F H S N L N A T Y B D M Y N N L E T I S P R K  
 F T D D E P S N M F Q G C Z O D T F R S Q G A A L  
 J I Y Q B T T N K M P U Q Y Z T P T O D L Q C L C  
 B A V R A H U U B L Y Y F Q U J F Y G E M J G J I

Puzzle 3

S N N W R J G T B I T D M N C M K S V I R L I M L  
 E S A A O A S C X F C E H K E R S I H L A Q R F A  
 R P O U V I T S J Q I I W D K O P D S D T K A D D  
 B Q W R N Y D S D O H M A J R D O O E O S N Q W E  
 S G J C C Y A Z R D A L V C M D S M A R E Y C L M  
 K C D S F G U C Z E O T Y V C S N U E Y Z Y A E N  
 C F F H G O N Y H F V V X B H O P V Z N N Y M R G  
 B V W X Q P D I H I A L F K I L Q D Q Y O R P U I  
 U K Q Z E M X O Y M E O I T Z D B F P T R D A O A  
 B S H F Y A N W J L E V A S H G U N Z N B J I W P  
 T X K G F O U W R Z F D E V X J T H T M S S G U M  
 R K W V R G P T W I N D M M F O J C H R A D N J A  
 G D T E D V W G W E H R E K E U J E Y H Q G M N C  
 N P W P A H K C M Z A P L H L N K H K A N P E S N  
 P O O R J O T M Y K I D T Y S W T M K K R P D Q A  
 K U C T C O O N T T Z G O O I I G M T S T N A O T  
 U K F U G C Q T R A E H E L P R U B E U K J L O S  
 N C E V Y Z D X O J N M T I M L P G Q D Y Y N W I  
 P D W V I W R M F L P Z C V L R S I N D A M S Z N  
 I H A E H X K Q O G I G W C T K H H X I C L G S A  
 Y N G D I W P C L J N L M F E V P V E V T T U D H  
 K U W A I T L I B E R A T I O N M E D A D S H C G  
 J J H L W Q J N X F Z X D H O E Q E C A V T I D F  
 U D B Q J R E L Y D I U Q Y J G S X K P K S Q D A  
 K A Z L I G L Z G L L O B P O T D I O M A A T G Z

Puzzle 4

N Q Q Y H I A Q W Z F P O S Q P Y S N O H E V C  
 V O U F I G C T O Y T V C D V Z X B K O M T B M  
 H E I K U F O I B L E M M O P E G Z B L D G P V  
 B I L S P L S P I R G J E I M A M J O F R K S K  
 P M L E S A L X L E D A L B C Z W B S B K Q R K  
 Y S I T R U E E D G E X K P T C M U R F W X V L  
 H M O S S A C T R T E B C P L Q E Z I C Z L O S  
 H B N F K I F R O G S T U D T W O T T F S R U D  
 Y F Y S K P Q F E N L S N G A K H F J W H P L F  
 A F G Z E N G N E P A R K G A R D R U B N Z V K  
 K T L A S D O K W J F A T C O B C N Z B I G S J  
 C V J G C J O O V F Z O R A S I P E B U X J N T  
 I L R L B I B K B Q D H T L X U M S V Y H U I L  
 F Z D F O C G P I D H C D N A F E R L G L E J D  
 Y L L N Z R T U X Z V W F X I F Y L A D P N Q U  
 J D M R U B G S S J I Y V O H O Q K M Y J E G L  
 X Y I O U S B N O R M S B E A R P Y Z A A T R X  
 V D G F V I Z C G D T R I B Y T M U K R R O Q B  
 S F U M Y F R G T S U G V M P E T O P Q W F I Z  
 Q P A E C E T E A W M P E T H E S L E Q B G N T  
 R A P J H V M F M I B M E Y H W W S A X M X N K  
 D N U H T I M X V Y K C S G G P U W I U W S L M  
 X I V F O M L G S G S W W Y I E T H P Z C V P K  
 U Y M E T S N K I P K B I N X B C I R M C X L E  
 R A P A H V M F B I B M T Y H W H S A X M X N Q

Puzzle 5

KMMTOVRQ(ELDDIBMA)ILLIWXSWJ  
 WBEF(FRANKLINWHARTON)JHGGAA  
 (EWILLIAMBURROWS)CZCNWEOGLM  
 LBJFVGRD(RDNAMPAH)CDRANO(ED)  
 AQH(RVBN)GEG(NOSLIWSIUO)OAS  
 GMRA(XGB)JEN(JACO)BZEILINRCC  
 YVYNE(LZYMD)ULEZHADKYIHQGEEO  
 N(WRDP)LFWIR(NEUM)CLIXKEVDEGN  
 OOA(U)ELQYEJAJFIDFYRPOOERW  
 HRVLOSJ(IUH)KEVENHWSOI(KOLEA)  
 TRWP(H)SSZVP(CHARLES)MCCAWLEY  
 (NAMHS)UCTREBORFENBZENLYINB  
 (A)BHPDRDDXHNAGAU(DHWO)UEOEJ  
 LTFAINMCCS(ALG)JMEN(YXR)HTSG  
 FRVT(VHWD)GLKVLKARYA(JVK)STYA  
 RENE(AOU)ASEFVSES(SFY)XZSE(EIH)  
 EBD(JD)JPOOUSECJDOIQBEELQFS  
 DO(SENO)JSEMAJAJJNMRIDLRPSI  
 GR(TTEN)RABEGROEGEERERAUTB  
 R(THOMAS)HOL(COMB)IHSWKA(AHA)ET  
 AJFUWOLVQZJY(EEGA)HLEAHCIMC  
 YIHGCXAVJIH(CARLMUNDY)CNSWN  
 VAJAOHGNBFOOEK(LAP)DRRGOHII  
 XCTDFZOPNCJSSE(PNR)BBMYS(SOY)  
 UYXSPJOJVG(FREO)QRRUVQNJFPJ

Puzzle 6

AWXMJXR(H)RLUYMQTCLVFSRGYVW  
 JWNOA(D)SASTTZNLMPPUZSPWXAY  
 JUGOVZ(RRF)MWLKKTDNR(SGO)QITL  
 DMMVNZE(OFG)SCMZII(OEH)NSRICL  
 FMLAY(LML)FPWPA(HYBY)FLKJHUHD  
 DDBQCZ(MDE)WJHG(EVE)EDGUT(WKOW)  
 AYDYWQ(OOA)AUF(LAL)WCCT(KKS)SU  
 BROYDC(SVL)X(HRT)KATK(JYAE)ZUES  
 CKSBLK(DEVC)CCH(SNOW)KK(KDH)QI  
 NTQOMO(IRML)LI(DI)HWN(MOC)WRYH  
 DSNPHIVS(VEW)QPM(NSV)AKWUPJHY  
 DTEDDH(A)TATRAIM(CAS)QFE(PGC)ET  
 OPSJIM(DRS)VD(AAM)MLRAN(NEU)FT  
 MYTJODY(EI)AXS(YJ)DF(DER)FO(TI)NG  
 ISK(HER)BERTS(WEE)TVER(LST)BFLB  
 WJ(TEL)RRTHAMAL(RQ)XX(TOG)NQWNG  
 BALVE(OSXR)NMB(IFQ)FZ(MAF)IUFDC  
 PWZ(B)JE(QOL)P(KCAL)BYR(NEH)LVODI  
 IGLR(NFL)NMZ(LQ)DXM(WAF)KUC(AL)QL  
 DIZH(MTT)SXLV(ZHD)KEJP(DW)ABYGQ  
 WC(OP)KGNIZ(IHP)KHP(KWA)HYJEFF  
 OUSJ(WWO)Q(PWER)E(BUARS)IC(NAR)FU  
 MRAJOCH(I)PLEBS(XQG)ZAT(WNN)CIW  
 WGNL(WPW)MS(FUL)OAN(SSY)RULLSLH  
 NNYEC(OTE)Z(LVB)JHUC(OEI)GC(QCV)U

Puzzle 7

V(R)HOSTAGETAKING(S)XR(G)BLSWHF  
 GODLEXES(B)IWDARKLE(U)NEWRVOY  
 PRYBAJUOS(BPH)SYSTA(F)IIOLXNA  
 ERWLH(CMO)FAYGJSNZE(C)KRFEWAI  
 BETYABI(QHBS)AWEVUL(H)CUKKKQS  
 ATNSINS(GIC)CSCJOTZE(AT)JURZP  
 T(LCN)VNODOK(QE)TSVSNM(JB)ZLCAS  
 SAGDT(QBE)ILLDSEN(QP)JIIOXZGOE  
 ZCAZIXSNJA(OIT)KAEECH(MU)ZPRL  
 AIYMQW(GHR)WR(IY)VRTSAL(B)NOSRA  
 OGDUBWKTSEEABHW(FIL)LOIDJVL L  
 ZOV(DHU)DOB(LX)QXBF(RNO)MNL MIDF  
 FLN(TFL)SBAVZDPJTCH(LNG)XOFJD  
 WOKWR(WO)HNLCEQ(FQ)IYXVDXOSDC  
 PHDOS(RB)REZYFA(XV)ZOXYIVTBJO  
 YC(W)HMEPGIS(WBOL)KCVWYFICHEN  
 JYEXNYWOTCESCSO(ED)TMQNPAUY  
 WSWSD(JJS)KAN(OJ)XRSFWPUNKTH  
 NPF(GNIPP)AND(IK)DYMUJPMFDEGN  
 PZNVIDLEHMDIHK(WX)MHCV(EYZ)XA  
 (EXTORTION)JCUFTIZCVELBHCAN  
 PHKKYRKM(QW)DMMAT(XSD)INUGCYV  
 RQIA(FROO)BXPLTE(ZW)GXQRLNDFZ  
 RUHZ(CIL)MDUKSKO(ZW)NOYCNBMPW  
 JMG(OX)KBOPIKHKFA(VDK)NNQHCDX

Puzzle 8

D(S)PTXZPEHO(Q)VGHE(YUC)Y(FRT)UNI  
 U(OM)CULJN(JNS)VK(F)CRLMQ(OS)MDKF  
 TLUR(PO)WRIHM(ZV)JAW(IQ)PRHZITM  
 (EST)BAR(LC)MLR(QOE)FDMPT(MV)FAVV  
 Y(YM)BLR(LCA)AOSZ(TH)KJL(FPL)XJP  
 I(TER)REEGAP(TBL)ZHNT(EH)OUFPIH  
 CC(OS)AW(TDH)ENA(QGG)REST(RVE)IXD  
 RUZSR(NW)IRT(ES)ESI(BAX)IFLYDA  
 BEK(QC)IO(QMO)SL(VNR)RL(LEX)NHEHJF  
 SORLECGIME(EHB)KEKCTUSAFMHQ  
 XCPDD(IKH)TFR(SO)EVLN(AN)PNTRJO  
 (SM)RATROPT(CPI)TU(OO)ZLBE(DFR)AC  
 U(JH)QLAZ(FR)DESUS(LSI)TZCSAQHC  
 (ECA)FTUO(BAN)HPE(JK)LDHOM(TACT)VY  
 EOAZ(KO)Y(TIO)IRS(NE)GELY(ILE)EQJ  
 UBBFT(CML)UQACAN(IB)FRCOUHYHT  
 KJBWL(QLL)MN(YFR)ILRR(ANT)GSSY  
 OTLAW(ADOK)BNC(NCR)LCDWREHPQI  
 AGKDE(ENS)DER(MVI)QYGT(IUM)VTMH  
 VMHGR(CMV)PZUX(DAK)BZX(YIT)SBGD  
 JOWAG(IVO)AL(KNAL)FTFELEHTY(BH)  
 EYRZR(KFL)O(PAR)ADEREST(QOW)IWN  
 BMNVCHJ(CAUS)T(OTHERE)EAR(VQZ)AL  
 SPGLBKUYH(WMW)QMUR(MND)TZ(XN)AD  
 YIEIR(IOB)ZEF(XMV)APFJJRAHUY P

## Puzzle 9

I MY K T S I U E P P S P B E N Z Y S V W A O A R  
 A P O V L B E L O E K O M M G X W E E U R N H H V  
 I Q M U B L U T T L W G R F D G A E I U H K D W H  
 Q O D Z T M P T I T T C W D Y V Q D T R O J W G B  
 U E O Q O H E B E O B O N Y J Y X I B L E U B D W V  
 S E S A U T T U E H E T O R M V B F A S D H M P D  
 E Q E T S T R O S S T K N C N N Z T U T A U K Q B  
 A N E O W N A R M N S X A C A Z T P S O B N B D R  
 U L R W I L O F C O E U O N P E R Q A R R T U L D  
 D F C Q A F O I T G U D R Z S O Z R C E A A M M J  
 K Z U H T M S P X I B T Y E T K H W T B S R A F Z  
 W E Z A Z I C P E X F Q H E D P K S A R I L I S F  
 T S E M O W H P Z R G W C P S R M D E E O F V L N  
 K R N N N P T B U Q U T M R R V E G H A N V B A S  
 I S G I R M O Y L N T S Q Y N O W S P T R B T C E  
 G G N H P C M C P H C C S Y Z W B X S H N Z P E R  
 T M P R O V I S E D S T R E T C H E R I V J S R U  
 U M D W U L L W O P L F U G R U J B F N N V M A T  
 H C N S D B O H F E G L J R V P Z K H G F G R T C  
 Y X T F J U D A S T O P B L E E D I N G T R S I A  
 G N B S N Q K C O H S L A C I R T C E L E K P O R  
 T R T D F E B Y X R G A R D O H C N O P D F Y N F  
 F Q P G Y R A V U L S I O N D I A Y D D U B D X M  
 X E Y L A Y M H J D C A O I E W D N G E A W L D T  
 W D B X T M I P L O A Y L M M D M E L J R V A N T

## Puzzle 10

P V V U D T A T G L D K T P F G Z W C T E C N P M  
 Y W V U M A H U W A A E M W F B P J R B H R F I J  
 U G H T W I H D T P S U L E D B F Q S E L X J T I  
 O E B D T U W Y Y O U G O T Y O T M E B D R T C  
 Y I S B V S I U A H M N P A O D S I H V R A D H H  
 V N O J L F X A S H K A P E S C C X T E F E H N G A  
 I L L U M I N A T I O N T H E P A R O U G A J U I M  
 H G U O R H T W O L L O F I L A C T G K T W O S B  
 C Z X S F A B A G O E P P S C I T N A W H K R T E  
 W T C K T R S I Y R R O M K K E I E E O C P L N R  
 H N W T S T V H G V E O U B H N I R D C O B L O I  
 G W Z Q Y S Z K N N K N K U A O O F P Z N W A R N  
 C A T Y Z E D G Y E O F A E U O B C L N T E B F G  
 V R A I D N E C N I E T L D B K N O L E R U T F L  
 T Y P S C B F D D E A C T A E E B C J Q O V V E B  
 X A R S Q A C D D I J G T A J S B K L O L H X A M  
 T A B X C E I I Y S O A Q B T M Y I N J V T K A P  
 E J E C T I N G Z M D L V L A N H N B R R Y W I A  
 M Q B A M G E I S Z D Z K J S G E G S A G D K P X  
 A D J U S T A B L E S I G H T S K M C Y Y B Q P F  
 P C G L U Z C J T F K X Y J B Y E T G N I R I F E  
 R E O B W H G X T Q T F Q Q Y K I F X A F H Q N W  
 C E H S K X O B M S C Q Z P N O I P G K R K G R G  
 V K H I A Q F Y O M S S P L N A P V J I M E T B D  
 R V C N F H V G O Z U M Q N G H Y P A Z C U P X M

## Puzzle 11

B Z E A W D E C P T L S J M U G I E F R C D T C Z  
 R N C O Y A S R Y K Y E Y L K Y G Q X B K V N M G  
 K E S O C U I V P B A D O T K Q M S B O C Q E D R  
 P C C Q S M Y Q H O N R E L A X A T I O N X M A A  
 G I D O E U L L S P T L O L P K Y O O Q C Q N W P  
 M N P R I F G H H N W S B E N O R P Z H H Z G E I  
 P U I G G L S H O U L D E R F I R E D S B M I L D  
 O G W L L I S C N E U T F T N L P F K I A N L I F  
 O M A E E O R P J C H F Z G Y X X O T G C Q A T I  
 L E X M M E T J R O I W U R X O Q N A H E S T C R  
 K K K U G E N S Y I N R E Q Q A A Z G T N Z H E E  
 G E R G Y O G K I U N U S G U L I N A P I E G J Q  
 T P I N S Y Y A V P C G A G L N I S E I Z R I O L  
 J R L O R T N O C T O I R E E D T P G C A O S R V  
 T M I G N I K C O L N D P F N O N R B T G I J P G  
 Q H A P L O C K I N G O E A C W N O H U A N S F C  
 F X D C F E F U O T R D T K C R R K B R M G B B W  
 S D M S H L Z D R P Z S W O R N I V D E O Y B L V  
 Z I W Q P U A E V F X E M D T B Q Y Q R M O Q L A  
 S Z T F T W Z I D D L F N D Q J F M O E K P O M W  
 I D P T E I L W R D C R L F H Q E J G B I X O M E  
 B H B M I F S G Z S D G Y U A V B M E Z Y X S X L  
 S R G Y U N C J U E S R W C O M R I D W F U Q X P  
 H K D O Q T G F L B W Y D Q I J U F I I D M Q E Q  
 I N P K H C X T N S N V U U Q I W Z E W B C Y H A

## Puzzle 12

G M Q D E P R I J I E N K B S C T H S A J Z O G S  
 R E D L L E T K M G O I T C K Q J B X H E M C J E  
 D S U R L Y K D A V W E L Y A R X T V T G A Z O E  
 I S Z L D E N N E K I L V R Z X H I N I B D B A R  
 Z E V D U Y Y M A L U B Q C A A F X K V R C H M C  
 Y N Y X D Z B C U Y L W U C X H J S B U O P P R N  
 D G P F I E Q J A M O O E G V G C U G J L X K H O  
 I E W Q R M O O S L P M B D M W F U K A I V G K O  
 J R E H P O V V A R L R E S I M K K B F Q L U O G  
 W S X M I C T A K X Y F C F L L N K D X V Y L F L  
 T K P T K S Q R L U L X O W X B F P V E M B V H F  
 K U U R D K K B O G N A T R S W X D S M J H Y A K  
 M R L R E J A E D S I G B D F M J L P N P R S G L  
 F Z X I L F X M Y S E N S D X I N I S W P Q D U  
 J I V U G A S L W X E Z D Q U K B R O M A C W N B  
 H O T E L S E Q A F O Z O I Z E O E F F A G B E B  
 N B W A V T I I E B M R W H A M J L A R F J Y X X  
 L N R O T C I V A F T E H R E S O Q A D D R I Y V  
 R J W E J F R W K T H I Q O Z G H G T Z P M G Q I  
 U B W P E T O R B O R V X F X I C A A A S O T U D  
 D W K T D O S O U R S W O M Z H E A W I R A X G F  
 U J M X Y O C M O T B C P J M L T O E H T B W J S  
 N A M O I D A R W X P Y U N I F O R M L K I L O W  
 X C W Y H G R Q H O N Z M B V Y R L E U V K S Q M  
 J T Z G V F P U G E I D Q U Q A T O H C W U M H R

Puzzle 13

CLDWMMSIDTECOHWIZTQSRRAHWZ  
 HOLHEFILCAOHTPBEOEIAOUCMG  
 LVNITOTEFNORWMHPNIAADAUTKR  
 RGFCRRBBVTORRUOTNOCDDTEIG  
 HUBQAPOEYNMRDGSCZUWLJNKMJ  
 BYQCSVXNCVWVWREGCQFLEUUSVR  
 UEVPISEIEMZAXLVJWUFENONTS  
 DQPTLSTSEUPMQBOOHJSNCCAHE  
 UHJOWEDGLHRKFCIVRSMBTELTT  
 YCFENRKEPIOLTRS WGF PURIC PUP  
 SETGAOCCRPHHEHPWDVMD OAE MT  
 LGAVXNABVAKEBISLNTITINPRIE  
 EMIMSLNOITAVELEYJFPKNCIZJ  
 JNHDCIJQCSESSIDO OY NPHUFAH  
 EZCRONJCABESMKJQGD OIEMPOY  
 JXEVRULJEUAEMILITARYCREST  
 SSKJLEMNYPIWIEPMQETVNIISE  
 TSETANIDROOCDIRGROHHA VBYW  
 YGARDLKELTQBFLXHPLSTPLNFT  
 YTIPEYADFFDNFALQYRHTWFMLKJ  
 JNEKMN CROSSROADZWI AVKMZEU  
 GHSUOOYOGSEZWLGVCR OVXZAY  
 NQKATPCULVERTAYDGVQWTNESI  
 VLPBBLNLFMIRWTDNRHUZCWSME  
 LUUQUTLMCOZKI IQTI FMVOTNYT

Puzzle 14

ONOITCERIDEGNAHCDDTDZQVEXH  
 BMPACTLXEKJNNHTEXIEIHDGAE  
 JNOLEHCEWDTHPMEESPOBRZNO  
 EHOMFPZMXXABKPUPI SQADDISI  
 CJFKYI WYRBAESVELKHWCAORPT  
 TPMBFDEBENCHELRPPORSNUOIEU  
 IREHSIMRIKSPSMTPOCDAQNFEL  
 VLJQEGNARAFEENAEDAMGSEESB  
 EAFPVCYBEOWUINBERDORGRCOU  
 RSCSYMWRQVD OHCUMTHEJOFNLO  
 ASHEIXCRSWPYOYSPAERNJFECD  
 LESIAENEMYINSIGHTURBMRMH  
 LMITDSMOLUCCGCOLUMNIGVMAQ  
 YBNVDYELQEXNQYBDORPVFWOSQ  
 PLGIMTAFATAALXRFRCLBWQCTT  
 OENPXFALITLACAMOUFLAGEJYL  
 IRREYOMKSRFLEE QBTKTIXPCAR  
 NXZCLEWQEFIAFCTLALKDPTTMQ  
 TUOMNEGSWCONF LFZAKHNZCKBB  
 ZRJTDKLWAWOCGARHNS SCALIUE  
 IGUGADZLAI VVZLELXTMQODGSR  
 IIEOJSFZYQRIEDE VXEBUGZQH  
 ZZCBURYUXOXJARZVHQFTQXATJ  
 MCKDLTAWRYZOBNEBZCSAVORPA  
 NOPEUTHQFGYMMJYRHSUZMJKK

Puzzle 15

EVLMEOEEDKNHBCSPZQECNCQYTM  
 GRGGXRYZOUACOYGHCCNOOVHCA  
 LRAJJNIEERWYVPSNAONIUNKTE  
 TCTFXMTFRNGNEBEPIZETNGFMT  
 EILDRIFAEWIYRGMQINOITITISCG  
 NBQELAGBIDKATHOGXEFSESWVN  
 HCMOAEWONBALTLSSUTDORSLLI  
 GMMDZREABELLONKROAIPAAQKD  
 PEIYEAPALELSIGOGNESKTOBWN  
 DZRMJM CATTLEAOFJCNBPCTOTFA  
 TUNSCOINX AIDVINESQEA AFREL  
 UISFJVILLIWRZRLESERTCHEUN  
 JCOUNTERINSURGENCYSTKPUCO  
 RRFUAHSIZTI OLEATXYIASXRDI  
 EOTBJUMR JUAOFTUBNMOPWIAEL  
 VRMOPGDWZGNRVAZGEINATEBAA  
 SOPPFKQFUKXXIMDGRAFITOBDT  
 CVODISPERSIONZHVLECGBNLT  
 BRFNEMECALPSIDEVAATHONRIA  
 TNIO PNOITCELLOCDLINCNHTHNB  
 CHAINOFCOMMANDFPZACEUENE  
 FOUNDEDNAMMOXOMTQOEFQAO  
 WPQSZYKYXOTTZICTYVNFMB CDC  
 CUTJDBVQWLGZNI AWBSWEGFPOL  
 ZGVGWWITMFETVTV CETJJCBKMC

Puzzle 16

IUCDRGHARASSINGFIREMFYLGQ  
 FNTAOEZYFYFESOLQMGLUORQDS  
 HOFMPGZLIARIUIXDKOROGCN  
 FEQIMDRIRQEHNTOGSYBLWTHBM  
 BBNJLFGESDNEZCJYAZEHA CNME  
 EQAIBTMDRTOJEAMCGRVBERFGD  
 EXRULIROSFECV CBFZUIYDJILP  
 HNWMSLELADBRAVIUARMTKO AESU  
 TDISIAIETOURTVYBAICVBR LWU  
 YBILRSPCFIQGSLEENYETSTDXW  
 YOTEERAYNSIOYQCOUGBJOETONF  
 NCWARVIQNIANUYTNETBNRAF BV  
 KENTCEIPBKDHIRWGFJOVVLFTU  
 GEUEETYTQSBEOAWMJITYEFIAW  
 DRRLTGCI OCEBPERTESRSRBRWREP  
 EKZPPRWCI EPRYIFN MANEUVER S  
 KFHDHMUASOTOELFMIEGASBQYV  
 CGYTBQQSENOOEIERIFGNIZARG  
 DYXPNTRONSWXR MWGGFARCFZTV  
 LJRHPKTF SICTSOPNOITAVRESBO  
 TINULEXTGZKZNI LDTIMLWQJHZ  
 MFWDGUOKCEO EUNQADRBJIILNE  
 ASYRJGW FLEETMARINEFORCEZZ  
 MJAQCJMGPVDLWXTFXIBOGPRXU  
 MIVCGGKGOFCPLFHTDRFLS FZLN

**Puzzle 17**

Across

- 6. Floating Dial
- 7. Cover
- 8. Short Luminous Line
- 9. Lens
- 10. Sighting Wire
- 12. Luminous Sighting Dots
- 13. Luminous Magnetic Arrow

Down

- 1. Sighting Slot
- 2. Bezel Ring
- 3. Fixed Black Index Line
- 4. Graduated Straight Edge
- 5. Base
- 11. Thumb Loop

**Puzzle 18**

Across

- 6. Mission Accomplishment
- 8. Warm Water
- 10. Nausea
- 12. Devil Dog
- 13. Friend or Foe
- 15. Service Alphas

Down

- 1. Division Commanding General
- 2. Battle of Chapultepec
- 3. The Commandant
- 4. Dress Blue Alphas
- 5. Female Marines
- 7. Garrison
- 9. Parade Rest
- 11. Larceny
- 14. Performance

**Puzzle 19**

Across

- 2. Characteristic
- 7. Hasty and Loop
- 11. Genital Herpes
- 12. Article Three
- 13. Fraternalization
- 14. Deadly Force
- 15. Two Rounds

Down

- 1. Abstinence
- 3. Second General Order

- 4. Strictly Prohibited
- 5. Combat
- 6. Occupation Field
- 8. Top Secret
- 9. SMEAC
- 10. Unnerving Sights

**Puzzle 20**

Across

- 4. Third
- 7. Dead Space
- 8. Three Hundred
- 11. Enola Gay
- 12. Gunnery Sergeant
- 14. Low Silhouette
- 15. Alfred Masters

Down

- 1. One Hundred
- 2. SALUTE
- 3. Chief Petty Officer
- 5. Squad Column
- 6. Article Thirty One
- 9. Concealment
- 10. Incoming
- 13. Gas Gas Gas

Extra Motivation Answer:  
“Teufel Hunden”

**Puzzle 21**

Across

- 2. Special and General
- 5. French Fourragere
- 9. Heart Disease
- 12. Terrorism
- 15. Fog of War
- 16. Triangulate
- 18. Seven
- 19. Miramar

Down

- 1. Mental Fatigue
- 3. Combat Readiness
- 4. Equipment
- 6. Survive
- 7. Phonetic
- 8. Center Flap
- 10. Article Four
- 11. Killed
- 13. Order Arms

- 14. Montgomery
- 16. Tactical
- 17. Service Number

**Puzzle 22**

Across

- 4. Vee
- 6. Fire Team
- 7. Commence Firing
- 10. Decrease Speed
- 13. Shift
- 15. Assemble
- 17. Range
- 18. Platoon

Down

- 1. Attention
- 2. Cease Fire
- 3. Form Column
- 5. Enemy In Sight
- 8. Are You Ready
- 9. Wedge
- 11. Echelon
- 12. Squad
- 14. Change Direction
- 16. Skermishers

**Puzzle 23**

Across

- 1. Close Up
- 3. Get Up
- 4. Disregard
- 7. Pace Count
- 8. Increase Speed
- 10. Freeze
- 11. Fire Slower
- 14. Take Cover
- 15. Rally Point
- 17. Halt
- 18. Head Count
- 19. Right Flank

Down

- 2. Objective Rally Point
- 5. Danger Area
- 6. Open Up
- 9. Fire Faster
- 10. Forward Advance
- 12. I Don't Understand
- 13. Hasty Ambush
- 16. Leaders Join Me

**Puzzle 24**Across

1. Magazine Release Button
4. Stock
6. Compensator
10. Carrying Handle
11. Trigger Guard
12. Bolt Catch
13. Hand Guard Assembly
14. Front Sight Assembly
15. Barrel Assembly
16. Selector Lever
17. Recoil Pad

Down

2. Ejection Port
3. Forward Assist
5. Charging Handle Assembly
7. Trigger
8. Magazine
9. Rear Sight Assembly

**Puzzle 25**

1. I was Born in Walnut Ridge, Arkansas.
2. My First Command was a rifle platoon with 3/1
3. I served as Marine Executive Officer aboard the aircraft carrier USS Kitty Hawk.
4. I was deployed to Southwest Asia during Desert Storm.
5. I commanded I MEF during two combat tours in Iraq.
6. I had 60,000 troops under my command.
7. I am married with three children.

**Puzzle 26**

1. I was born in rural Mount Hebron, Alabama
2. I served in both the Army and the Navy prior to joining the Marine Corps.
3. I was 37 years old when I arrived at Boot Camp.
4. Because of my previous military service, I rated three hash marks and after boot camp

I gained a new nick name.

5. In 1943, I was among the first black men to be trained as a Marine drill instructor.
6. I became one of the first black Sergeants Major in the Marine Corps.
7. On April 19, 1974, Montford Point was renamed in honor of me.

**Puzzle 27**

The scarlet and gold surrounding the emblem are the official Marine Corps colors. These in turn are enclosed by Navy blue and gold signifying the Marine Corps as an integral part of the naval team.

**Puzzle 28**

- Article 77 -Principals  
 Article 78 -Accessory after the fact  
 Article 79 -Conviction of lesser included offenses  
 Article 80 - Attempts  
 Article 81 - Conspiracy  
 Article 82 - Solicitation  
 Article 83 - Fraudulent enlistment, appointment, or separation  
 Article 84 - Effecting unlawful enlistment, appointment, or separation  
 Article 85 - Desertion  
 Article 86 - Absence without leave (AWOL)  
 Article 87 - Missing movement  
 Article 88 - Contempt toward officials  
 Article 89 - Disrespect toward a superior commissioned officer  
 Article 90 - Assaulting or willfully disobeying superior commissioned officer  
 Article 91 - Insubordinate conduct toward warrant officer, noncommissioned officer, or

petty officer

- Article 92 - Failure to obey order or regulation  
 Article 93 - Cruelty and maltreatment  
 Article 94 - Mutiny and sedition  
 Article 95 - Resistance, flight, breach of arrest, and escape  
 Article 96 - Releasing prisoner without proper authority  
 Article 97 - Unlawful detention  
 Article 98 - Noncompliance with procedural rules  
 Article 99 - Misbehavior before the enemy  
 Article 100 - Subordinate compelling surrender  
 Article 101 - Improper use of countersign  
 Article 102 - Forcing a safeguard  
 Article 103 - Captured or abandoned property  
 Article 104 - Aiding the enemy  
 Article 105 - Misconduct as a prisoner  
 Article 106 - Spies  
 Article 107 - False official statements  
 Article 110 - Improper hazarding of vessel  
 Article 112 - Drunk on duty  
 Article 113 - Misbehavior of sentinel or lookout  
 Article 115 - Malingering  
 Article 118 - Murder  
 Article 120 - Rape, sexual assault, and other sexual misconduct.  
 Article 126 - Arson  
 Article 134 - General article

**Puzzle 29**

1. AK-47
2. MP5
3. Barrett .50 Cal
4. Bayonet
5. Dragunov
6. M2 .50 caliber Machine gun



7. M4 with 203 grenade Launcher
8. M14
9. Assault Shotgun
10. SMAW (Shoulder Mounted Assault Weapon)
11. Fragmentation Grenade
12. Incendiary Grenade

### Puzzle 30

#### Across

3. American Civil War
4. Operation Iraqi Freedom
11. Spanish American War
12. World War I
13. Banana Wars
14. Boxer Rebellion
15. World War II

#### Down

1. Barbary Wars
2. Revolutionary War
5. Persian Gulf War
6. Operation Enduring Freedom
7. Mexican American War
8. Korean War
9. Quasi War
10. Vietnam War

### Puzzle 31

“Some people spend an entire lifetime wondering if they made a difference. The Marines don’t have that problem.”

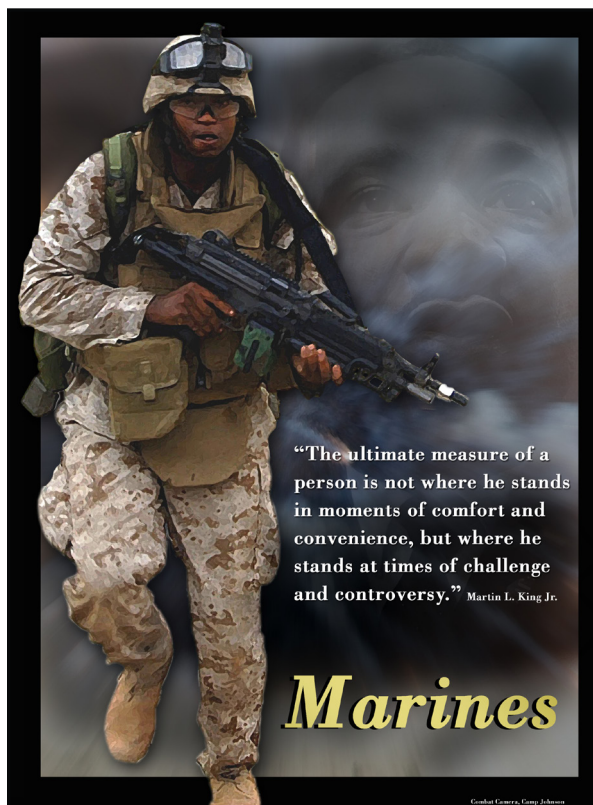
### Puzzle 32

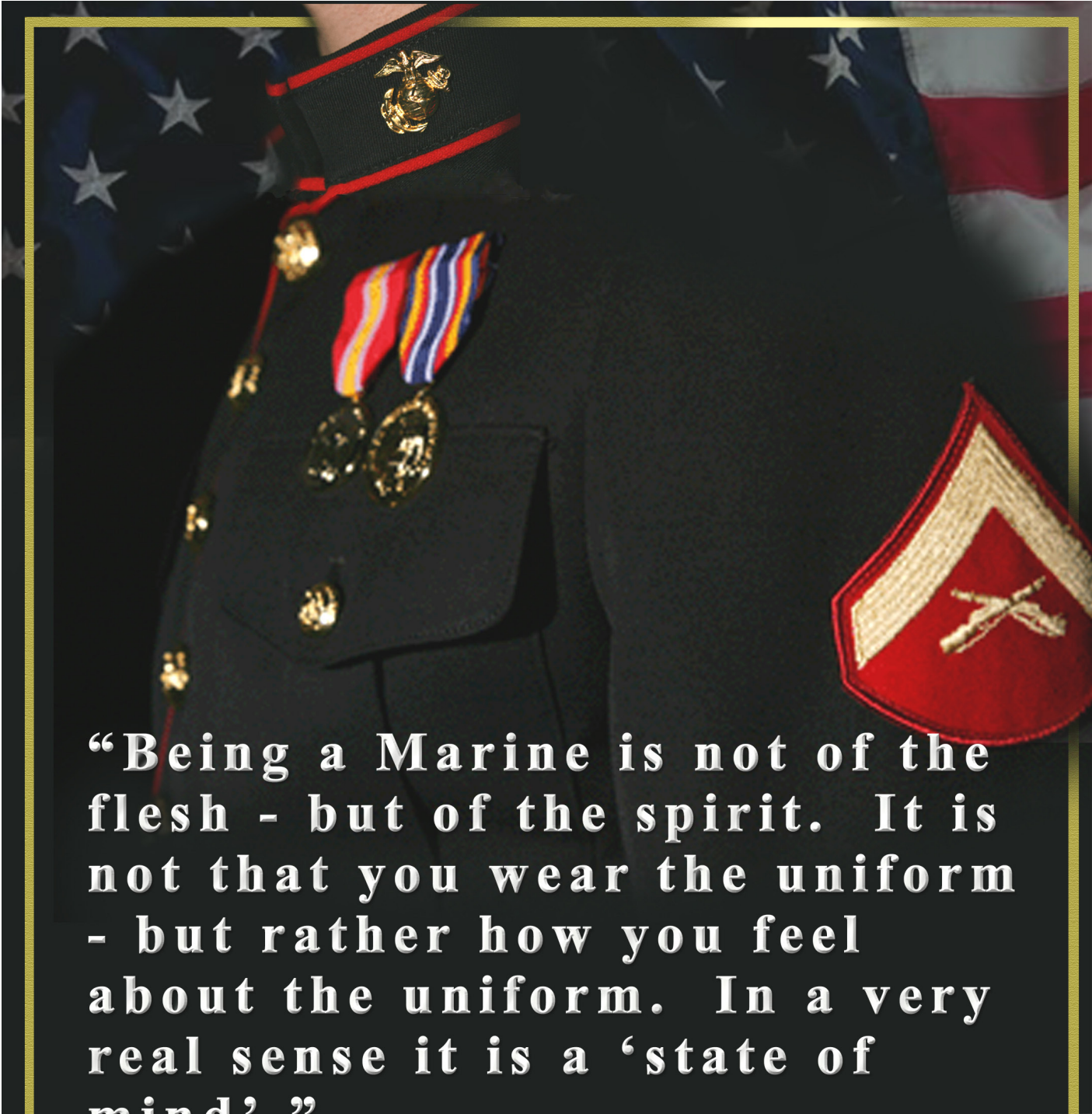
MacArthur US Army

“I have just returned from visiting the MARINES at the front, and there is not a finer fighting organization in the world!”

### Puzzle 33

The guide posts in front of the right file of the platoon when the platoon is in column





**“Being a Marine is not of the  
flesh - but of the spirit. It is  
not that you wear the uniform  
- but rather how you feel  
about the uniform. In a very  
real sense it is a ‘state of  
mind’.”**

Adapted from a statement by Lt.Gen Ormand R. Simpson

**United States  
Marines**

Combat Camera, Camp Johnson







Created By  
Combat Camera,  
MCCSSS,  
Camp Johnson, NC  
(910) 450-0701 DSN 750-0701