

# Joint Research Centre

The European Commission's in-house science service

[www.jrc.ec.europa.eu](http://www.jrc.ec.europa.eu)

*Serving society  
Stimulating innovation  
Supporting legislation*

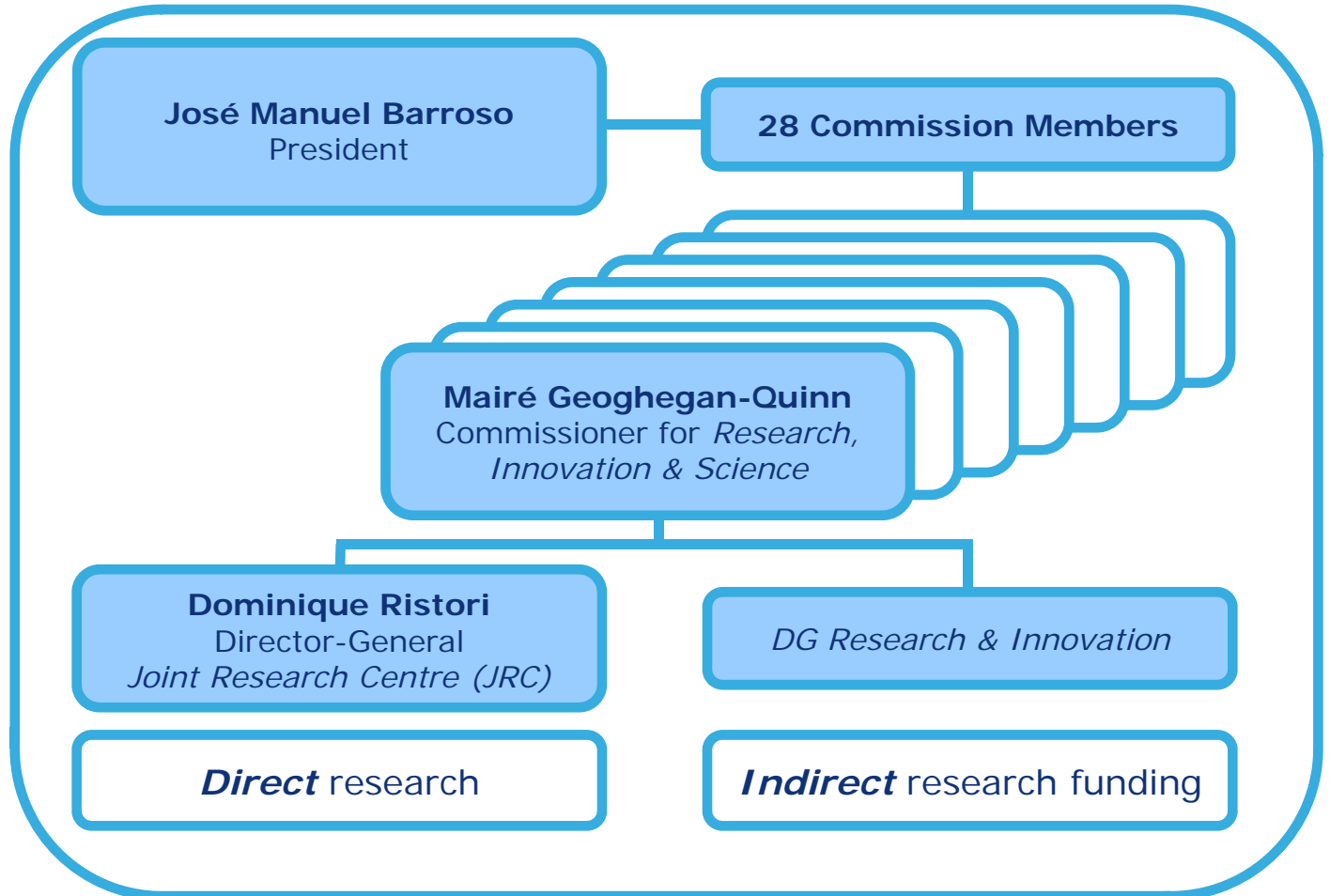


# Who are we and what do we do?

JRC is the European Commission's in-house science service. It provides the science for policy decisions, with a view to ensuring that the EU achieves its Europe 2020 goals for a productive economy as well as a safe, secure and sustainable future.

The JRC plays a key role in the European Research Area and reinforces its multi-disciplinarity by networking extensively with leading scientific organisations in the Member States, Associated Countries and worldwide.

## The JRC within the European Commission



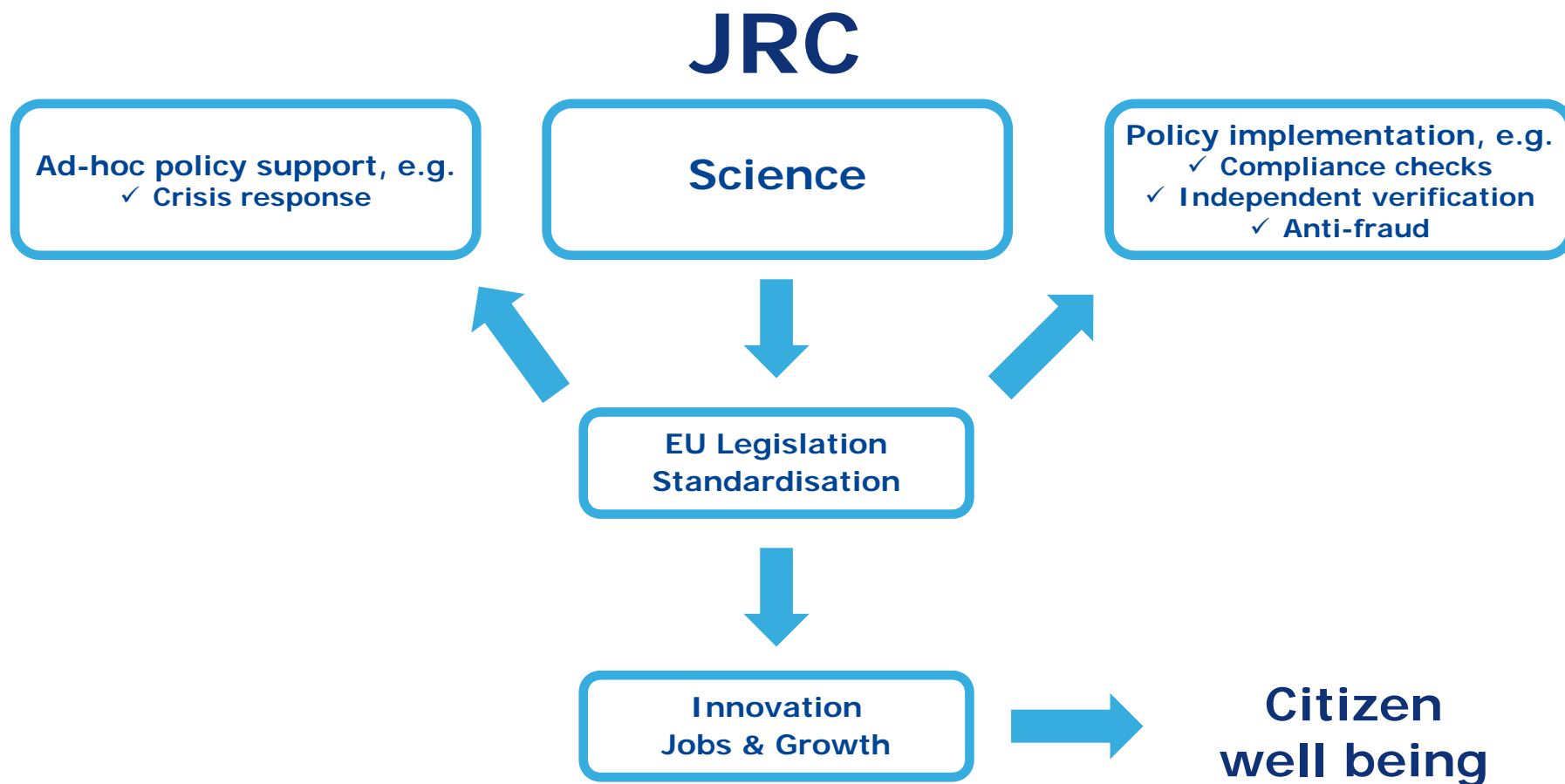


**Our Mission...** is to provide customer-driven scientific and technical support for the conception, development, implementation and monitoring of EU policies.

**Our Vision driven by the Europe 2020 Strategy...** is to be a trusted provider of science-based policy options to EU policy-makers to address key challenges facing our society, underpinned by internationally-recognised research.

**Our Impacts for the EU citizen...** supporting general well-being via harmonised research on energy, environment, transport, climate change, safety of food and consumer products, crisis management, and nuclear safety and security, that have important positive impact on the daily life of the citizen.

## Science-based input to EU legislation and standardisation



# Main competence areas

- Energy
- Clean transport
- Environment & Climate change
- Agriculture & Food security
- Health & Consumer protection
- Safety and security, including nuclear
- Information and communication technology



# A Networked Organisation

The JRC works with over 1 000 public and private organisations, institutions and expert groups in more than 250 major networks worldwide:

- Cooperation and partnerships with key organisations
- Support to EU enlargement
- Training and mobility of EU researchers
- Access to scientific infrastructures
- Support to European Research Area policies
- Support to standardisation

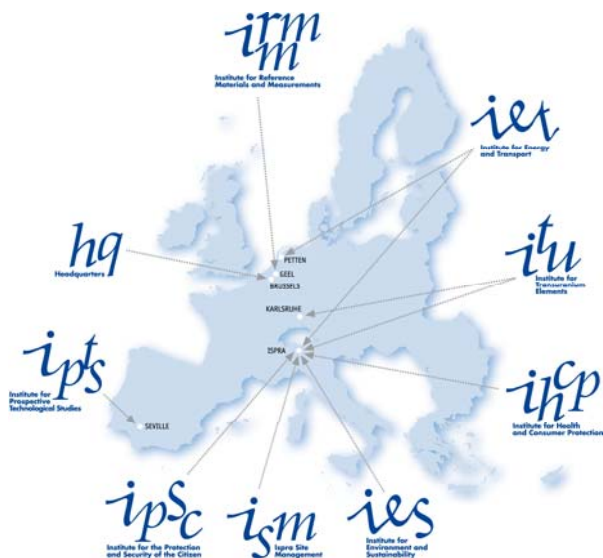


European Research Area



## Established 1957

- 2,822 permanent and temporary staff in 2012
- 1,443 scientific publications in 2012
- 2012 Budget: €381 million, plus €82 million earned income



## Where you can find us

- **Corporate Services** – *Brussels*
- **IRMM** – Institute for Reference Materials and Measurements  
*Geel, Belgium*
- **ITU** – Institute for Transuranium Elements  
*Karlsruhe, Germany and Ispra, Italy*
- **IE** – Institute for Energy  
*Petten, The Netherlands and Ispra, Italy*
- **IPSC** – Institute for the Protection and Security of the Citizen  
*Ispra, Italy*
- **IES** – Institute for Environment and Sustainability  
*Ispra, Italy*
- **IHCP** – Institute for Health and Consumer Protection  
*Ispra, Italy*
- **IPTS** – Institute for Prospective Technological Studies  
*Seville, Spain*



# Joint Research Centre (JRC)

[www.jrc.ec.europa.eu](http://www.jrc.ec.europa.eu)

Contact: [jrc-info@ec.europa.eu](mailto:jrc-info@ec.europa.eu)

*Serving society*  
*Stimulating innovation*  
*Supporting legislation*

13 September 2013