

Safety and Disaster Assistance Working Group Workshop

May 31st – June 2nd, 2016

Herby G. Lissade, P.E.
Chief, Office of Emergency Management
California Department of Transportation





Emergency Response Case Study In the United States

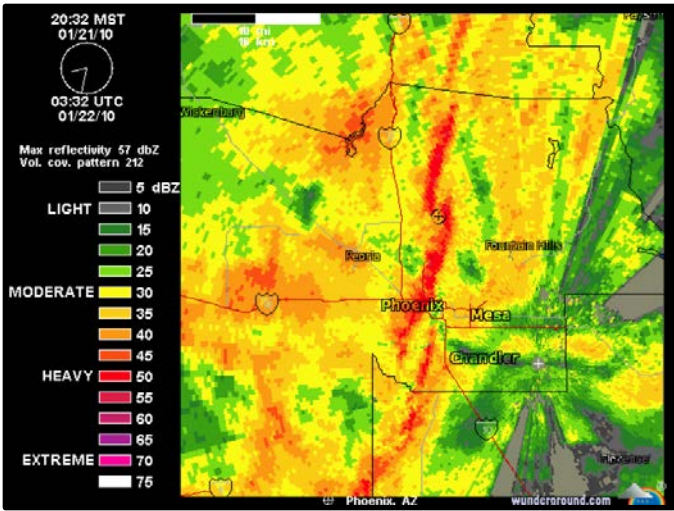
January 2010 Storms in California





A strong and fast moving storm system rolled through California during January of 2010.

All-time low pressure records set over roughly 10 - 15% of the U.S. - Oregon, California, Nevada, Arizona and Utah.





More than 1.6 million utility customers in the State of California had their service affected during this storm.





Interstate 5, the major artery connecting Southern California to northern parts of the state, was shut down due to blizzard conditions.





California Utilities Emergency Association (CUEA) needed to send emergency supplies through the closed Interstate 5 corridor.

CUEA asked Caltrans for help.





Caltrans provided personnel and equipment to facilitate access through the closed Interstate 5 corridor.

How was this possible?

Disasters can be grouped into two main categories: natural and man-made disasters. Natural disasters are the consequences of natural hazards that affect people, whereas man-made disasters are caused by human actions. Experiences from recent emergencies revealed that supply chain activities in the early phases of emergency response (including procurement and transport of relief items) tend to involve a lot of activity starting outside of the affected area, in the strategic zones.

EMERGENCY SUPPLY CHAIN

A critical factor in planning chain is initiated. In its time from will have an enormous which supplies are initiated reach their response destination and point delivery of relief. Supplies consist of relief among others. Most of the





Mutual Assistance

Executive Order

Rules of Engagement

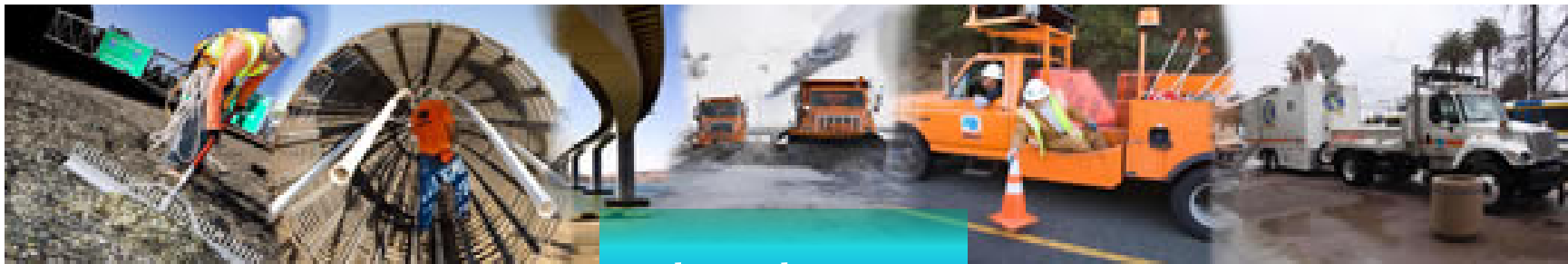
Life Line Access





Caltrans utilizes partnerships to plan for, coordinate and respond to disasters and emergencies and ensure the continued participation and support for emergency operations.





Thank you

