



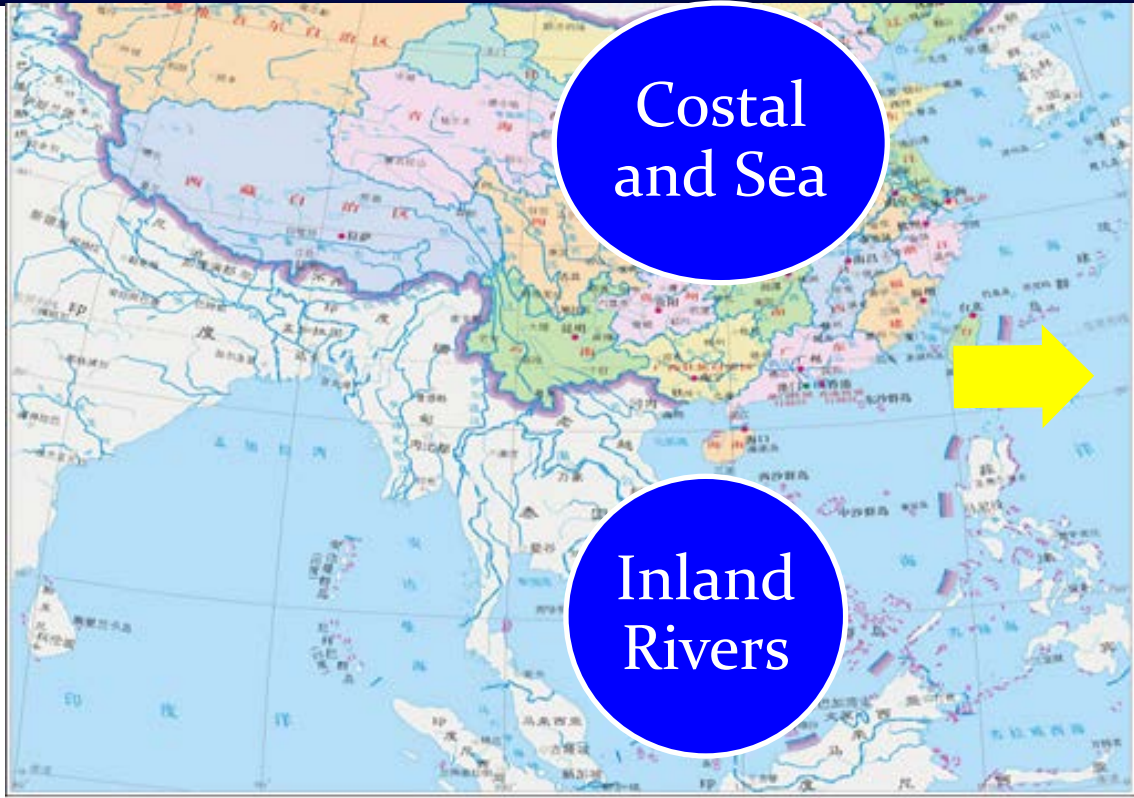
Regulations and Standards of Transportation Of Hazardous(Dangerous) Goods at sea

Song Ming

Maritime Safety Administration of the People's Republic of China

2016.05.31





Costal and Sea

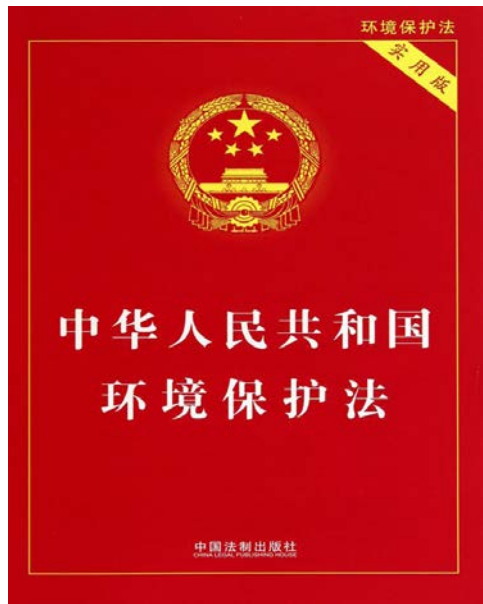
Inland Rivers

Ships carrying dangerous goods under the safety supervision system



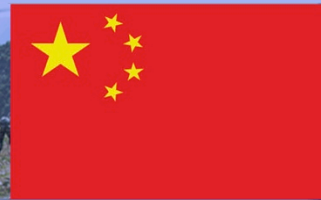


LAWS



- 《Maritime Traffic Safety of the people's Republic of China》
- 《Port Law of the people's Republic of China》
- 《Marine environment protection law of the people's Republic of China》
- 《Water Pollution Prevention and Control Law of the People's Republic of China》
- 《Production Safety Law of the People's Republic of China》





REGULATIONS

- 《Hazardous chemical materials safety management regulations》
- 《Civil explosives safety management regulations》
- 《Fireworks safety management regulations》
- 《Radioactive goods transportation safety management regulations》
- 《Regulation for the administration of traffic safety in inland waters》
- 《The regulation of prevention and control of Marine pollution to the Marine environment》



中华人民共和国
内河交通安全管理条例



中国法制出版社

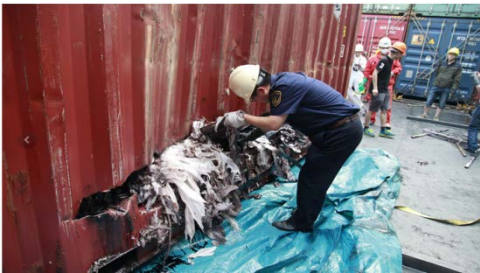




Administrative Measures

- 《Ships carrying dangerous goods safety supervision and management





Application and Approval

Carry out the emergency treatment

Check before approval

PROCESS

Ship's on-site inspection

Jobholders management

Investigate and punish false conceal behaviour





Standard System

-Classification of goods and goods safety operation standard

- Current vessel's carrying dangerous goods technical standard system is relatively comprehensive, involving more than 300 standard (incomplete statistics), mainly including the national standards and the industry standards. There are both mandatory and voluntary standards
- The technical standard system can be divided into the general standard、Hazardous or polluting classification criteria、Laboratory testing standards、the laboratory tests use standard、Packaging using and testing standards and operational standards, etc





THANK YOU !

