

交通事故管理 和紧急运输行动

2013 年 10 月

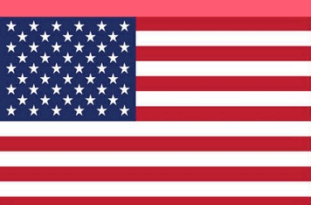
John Corbin

威斯康星州运输部

交通运作局局长

John.Corbin@dot.wi.gov





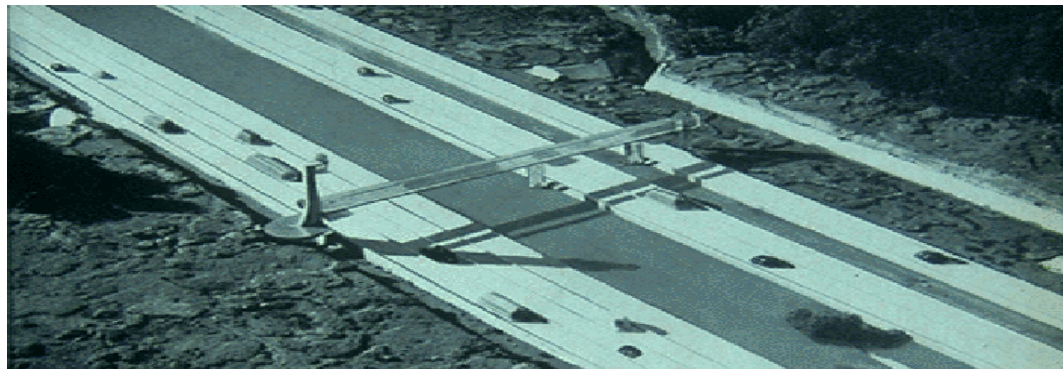
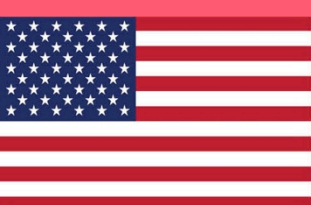
概览

美国的交通事故管理

威斯康星州的交通事故管理改善计划

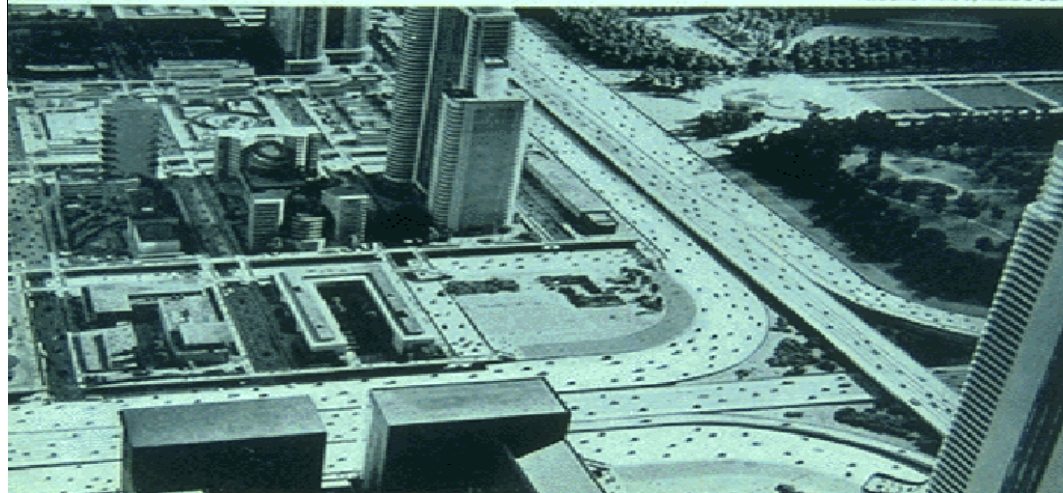
交通事故调查及审核





A TYPICAL EXPRESS BOULEVARD INTERSECTION AND FEEDERS

Autorama Photo by Richard G...



Popular Science
MONTHLY

APRIL 1967 35 CENTS

How Copters Can Solve Traffic Jams

TWO BLUEPRINTS:

- ◆ Basic Rooms You Can Add to Any House
- ◆ New Split-Level Workbench

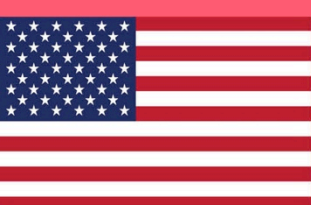
Riding Mower or Yard Tractor—Which Is Best for You?

New Series: Home Plumbing You Can Do Easily

Concrete in Color: Projects You Can Make

Twenty-First Century—The World You'll Live In
By WALTER CRONKITE

First Driving Report: Japanese Wankel-Powered Car



作为国家倡议发展交通事故管理

- 1980 年以前： 城市高速公路交通管理
- 20 世纪 80 年代： 美国联邦公路局 (FHWA) 的最初国家指引
- 20 世纪 90 年代： 国家会议和委员会
- 21 世纪： 国家统一的交通事故管理目标



救护人员安全

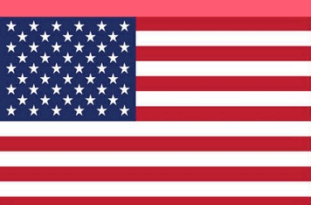


安全快速清理



快速、可靠、彼此协作的沟通





TIM 的“商业案例”

交通拥挤管理

州际的公路系统可靠性

应急准备

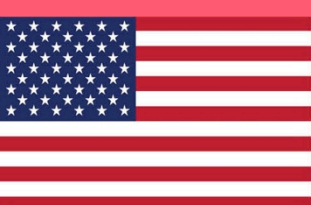
旅客安全

受害者生存

救护人员

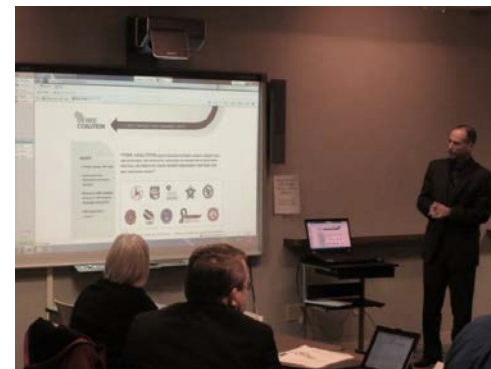
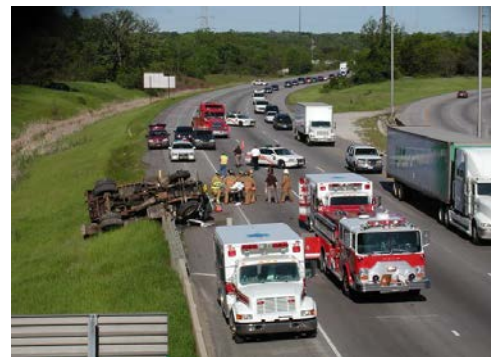
安全

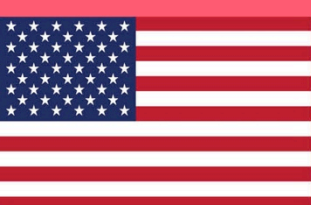




威斯康星州 交通事故管理改善 计划要素

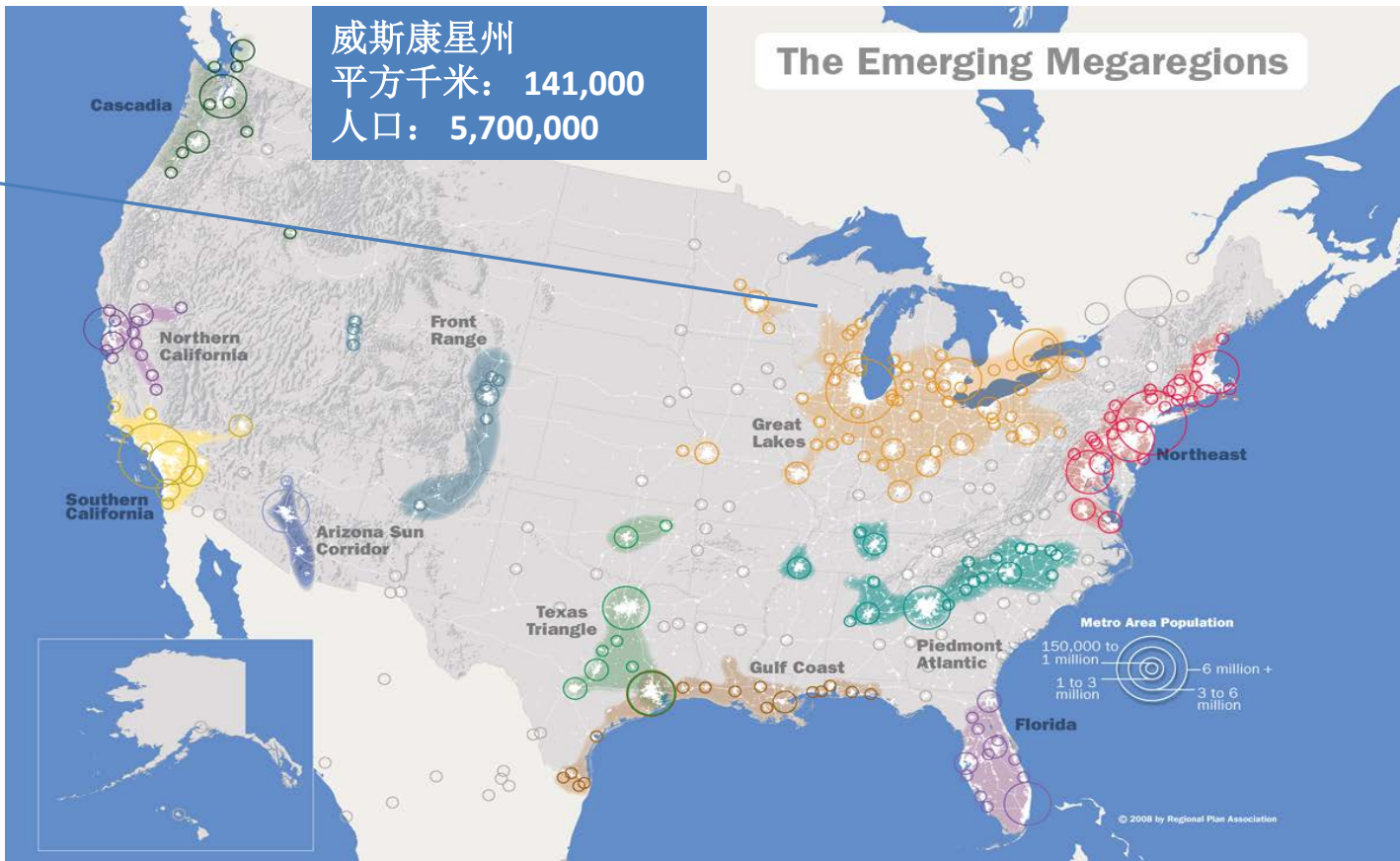
1. 策略性计划规划结构
2. 行动和反应计划
3. 合作协议
4. 指引和法律。
5. 服务、工具、技术和系统

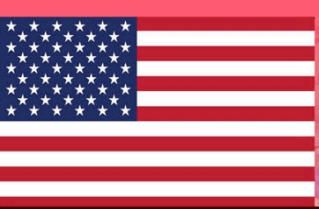




威斯康星州
 平方千米: 141,000
 人口: 5,700,000

The Emerging Megaregions

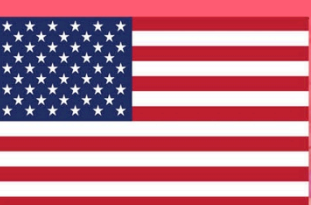




威斯康星州 TIME 计划监管和组织

- 监督委员会
- 指挥人员同侪交流
- 地区合作会议
- 技术委员会
- 交通事故管理改善 (TIME) 联盟



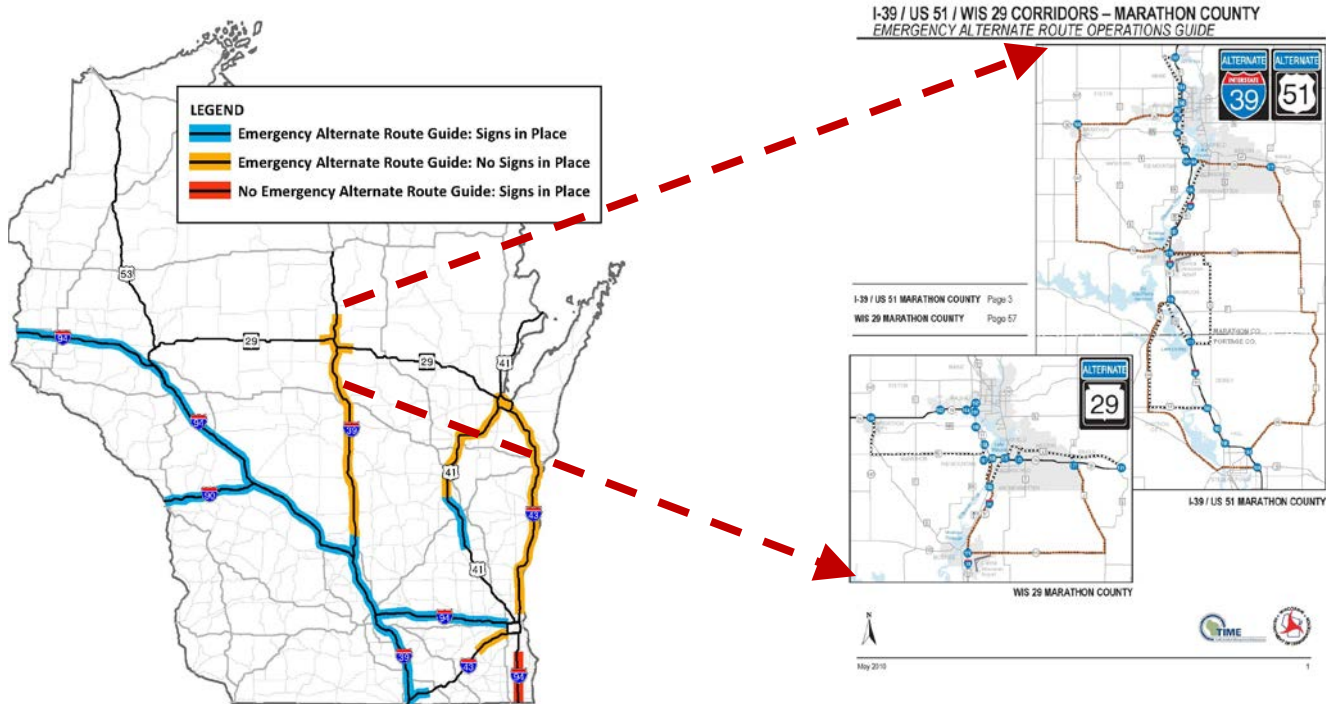


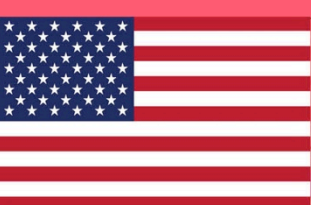
紧急备用路线规划

紧急备用路线规划已在所有五个WisDOT地区展开

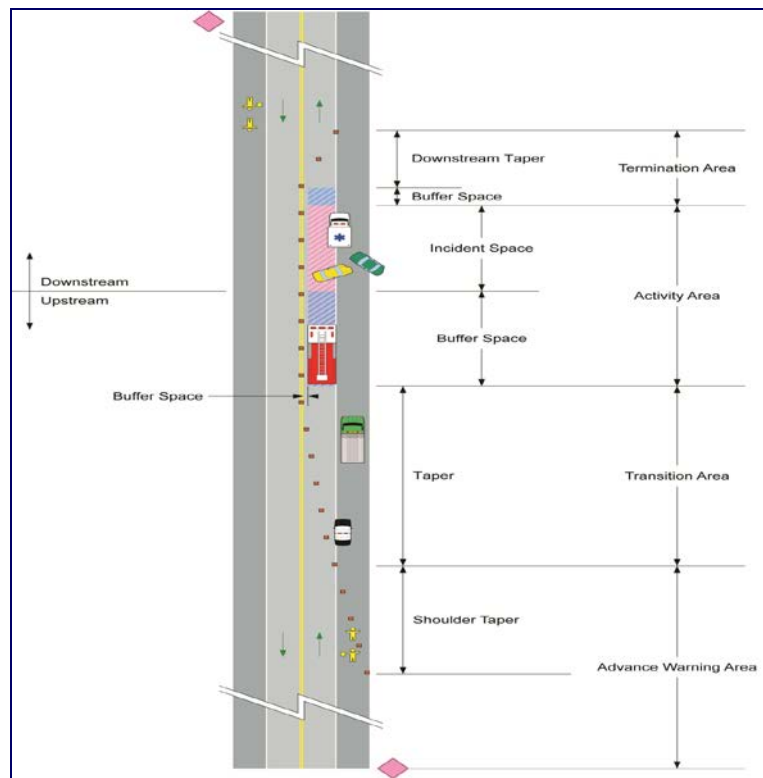
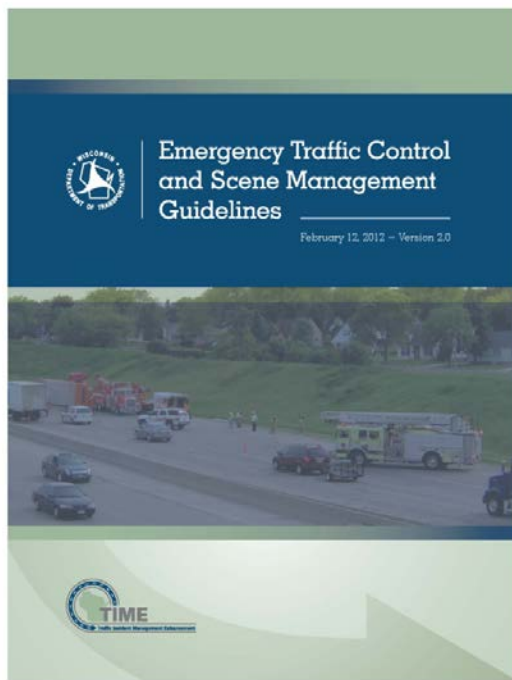
已根据全州的最佳惯例制定全州范围内的紧急备用路线路标模板

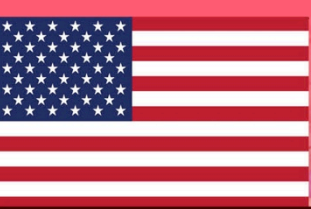
为州中的大部分州际公路制定路标





WisDOT 紧急交通管制 和现场管理指引





交通法规和 驾驶员教育

MINOR CRASH
MOVE VEHICLES
FROM TRAVEL LANES

Know the law
in Wisconsin

IF YOU CAN STEER IT
CLEAR IT!

After a traffic
Crash,
if your vehicle can be driven and no one is injured, move the vehicle to a location where it won't obstruct traffic.



Move Over or **Slow Down**
For Stopped Emergency / Maintenance Vehicles

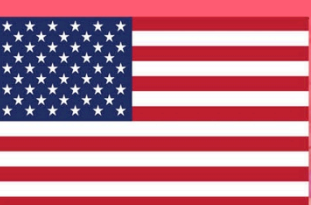
Move Over or **Slow Down**
It's the law in Wisconsin

Move over a lane from the stopped vehicle(s) until you're safely past.

If you can't change lanes, slow down and maintain a safe speed for traffic conditions.

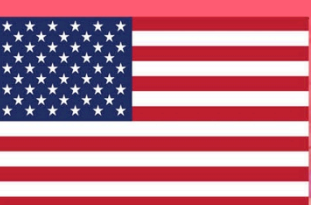
Remember, the law applies to any emergency response or maintenance vehicle with its emergency lights flashing.

Wisconsin is proud to be a member of the Department of Transportation.



高速公路服务团队 和拖车服务





全州交通运作中心 和事故通知系统

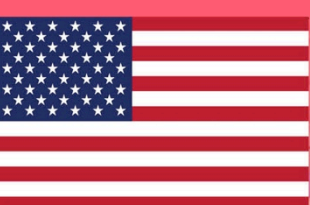




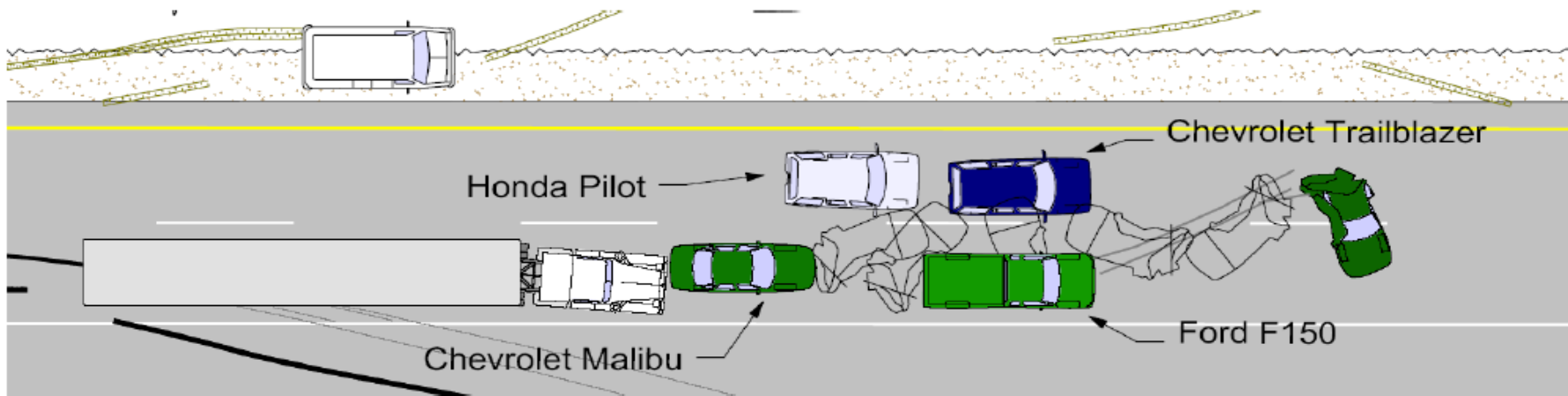
紧急运输行动 (ETO)

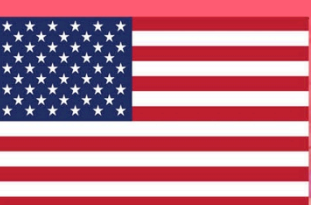
- 疏散规划
- 跨机构培训和练习
- 事故通知流程的升级
- 国家事故管理系统和事故指挥系统“协调规则”





公路紧急情况 调查及审核： 交通事故重组





公路紧急情况 and 事故 调查及审核： 在行为审核和任务报告后





<http://timnetwork.org/>