

Traffic Incident Management & Emergency Transportation Operations

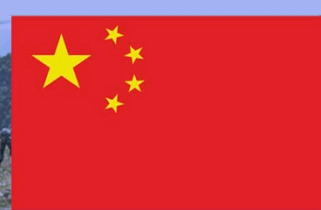
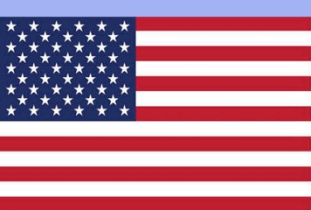
October , 2013

John Corbin

**Director, Bureau Of Traffic Operations
Wisconsin Department of Transportation**

John.Corbin@dot.wi.gov





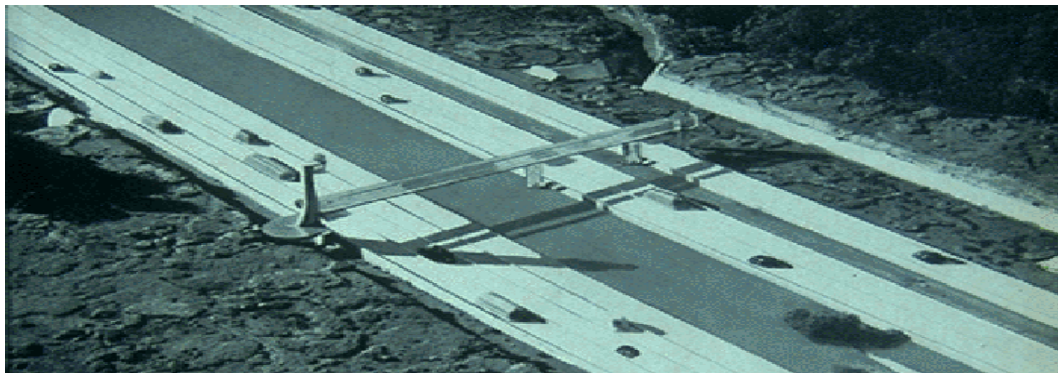
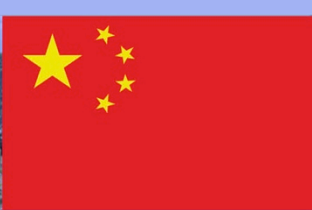
Overview

Traffic Incident Management in the U.S.

Wisconsin's Traffic Incident Management
Enhancement Program

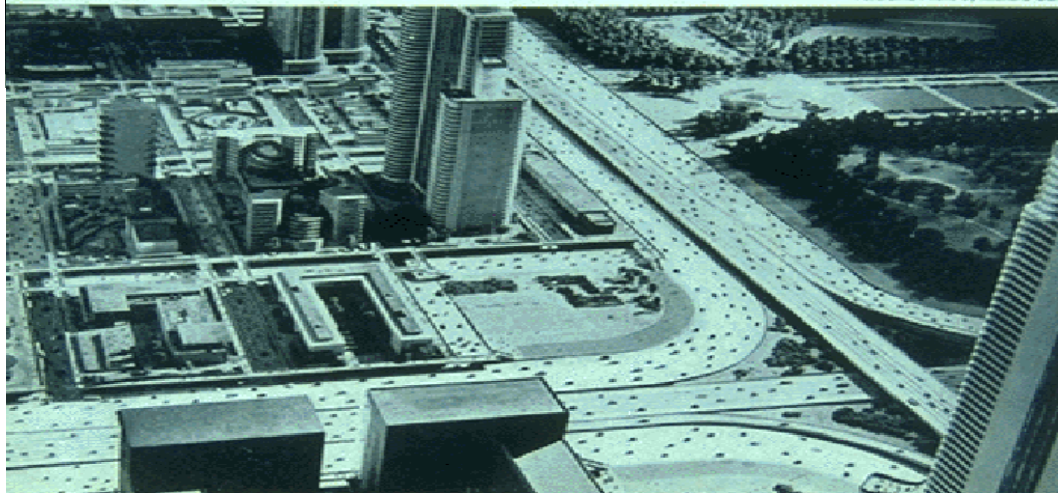
Traffic Incident Investigation & Review





A TYPICAL EXPRESS BOULEVARD INTERSECTION AND FEEDERS

Futureama Photo by Richard G...



APRIL 1967 35 CENTS

Popular Science

MONTHLY

How Copters Can Solve Traffic Jams

TWO BLUEPRINTS:

- Basic Rooms You Can Add to Any House
- New Split-Level Workbench

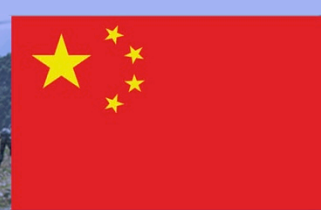
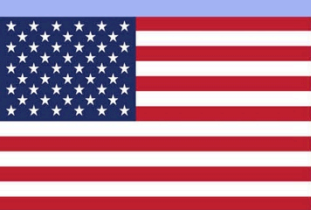
Riding Mower or Yard Tractor—Which Is Best for You?

New Series: Home Plumbing You Can Do Easily

Concrete in Color: Projects You Can Make

Twenty-First Century—The World You'll Live In By WALTER CRONKITE

First Driving Report: Japanese Wankel-Powered Car



Evolving Traffic Incident Management as a National Initiative

- **Pre-1980: Urban Freeway Traffic Management**
- **1980's: Initial National Guidance from FHWA**
- **1990's: National Conferences & Committees**
- **2000's: National Unified Goal for Traffic Incident Management**



Responder Safety

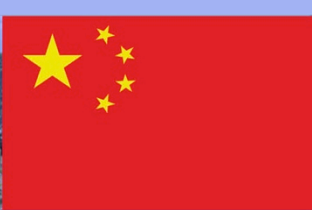
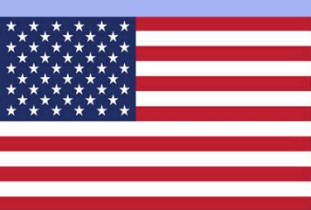


Safe Quick Clearance



Prompt, Reliable, Interoperable
Communications



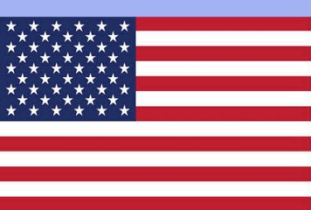


The “Business Case” for TIM

Traffic Congestion Management
Interstate Highway System Reliability
Emergency Preparedness
Traveler Safety
Victim Survival

**Responder
Safety**

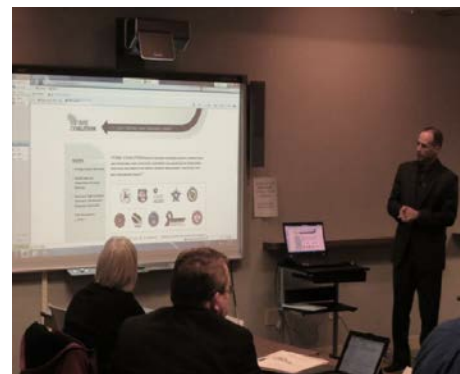


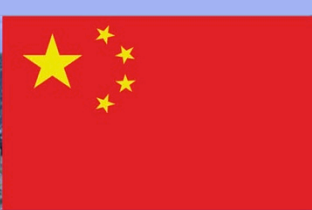
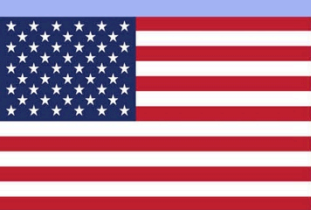


Wisconsin Traffic Incident Management Enhancement Program Elements



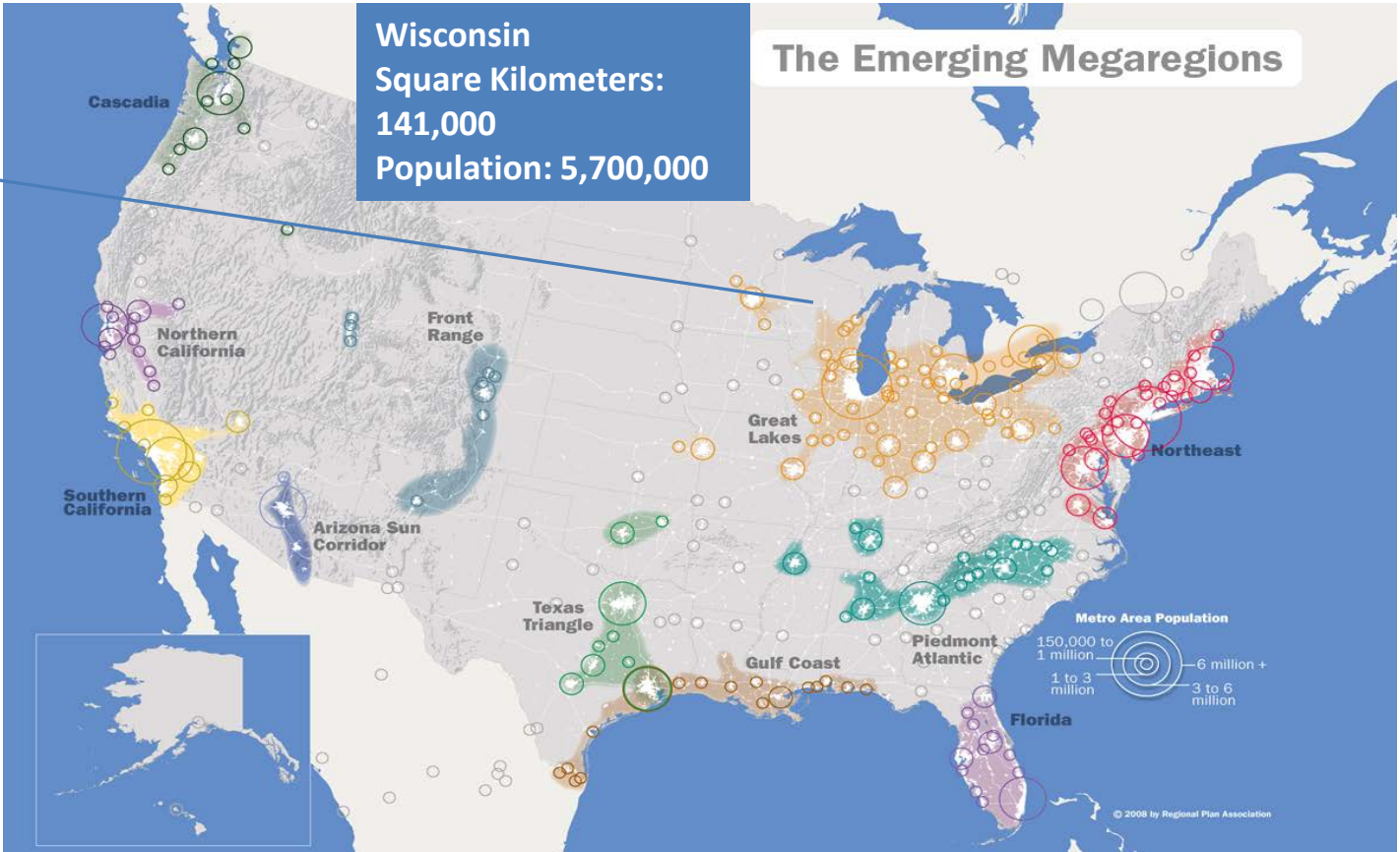
1. Strategic Program Planning Structure
2. Operations & Response Plans
3. Partnership Agreements
4. Guidelines & Laws.
5. Services, Tools, Technologies & Systems





Wisconsin
 Square Kilometers:
 141,000
 Population: 5,700,000

The Emerging Megaregions





Wisconsin TIME Program Oversight & Organization

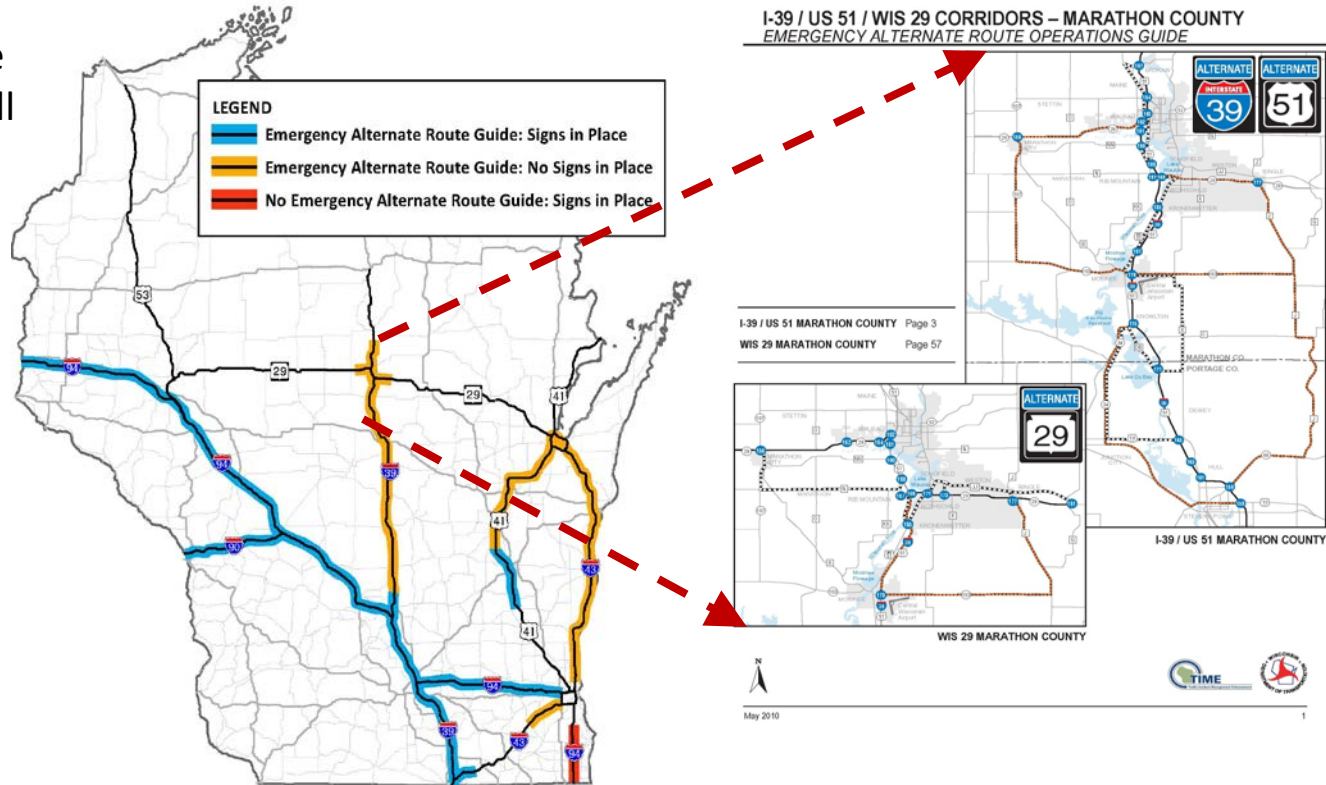
- Oversight Committee
- Command Staff Peer Exchange
- Regional Partnership Meetings
- Technical Committee
- TIME Coalition

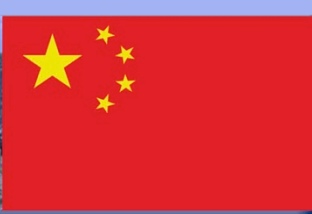




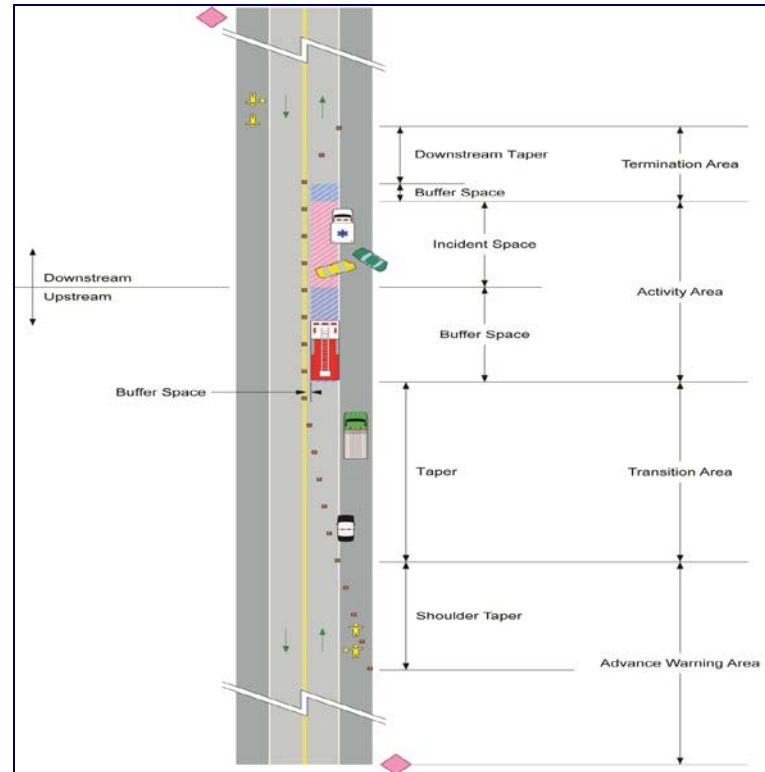
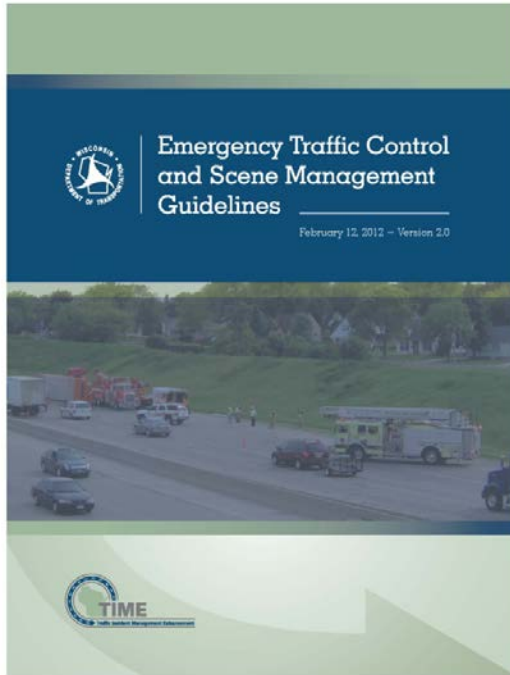
Emergency Alternate Route Planning

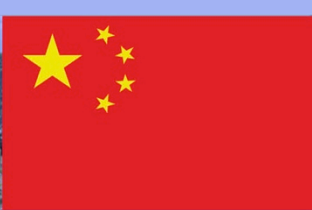
- Emergency alternate route planning has occurred in all five WisDOT Regions
- A statewide emergency alternate route guide template has been developed based on best practices from around the state
- Developed guides for the majority of Interstate roadways in the state





WisDOT Emergency Traffic Control and Scene Management Guidelines





Traffic Laws & Driver Education

MINOR CRASH
MOVE VEHICLES
FROM TRAVEL LANES

Know the law in Wisconsin

IF YOU CAN STEER IT CLEAR IT!

After a traffic Crash,
if your vehicle can be driven and no one is injured, move the vehicle to a location where it won't obstruct traffic.



Move Over or **Slow Down**
For Stopped Emergency / Maintenance Vehicles

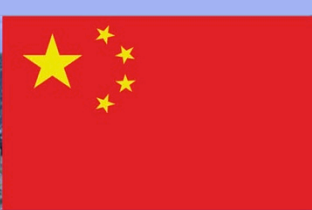
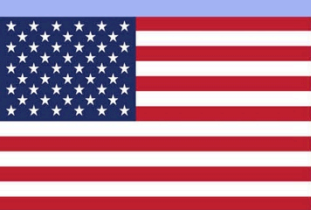
Move Over or **Slow Down**
It's the law in Wisconsin

Move over a lane from the stopped vehicle(s) until you're safely past.

If you can't change lanes, slow down and maintain a safe speed for traffic conditions.

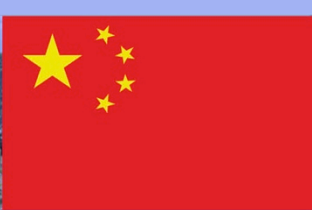
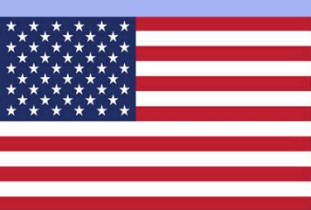
Remember, the law applies to any emergency response or maintenance vehicle with its emergency lights flashing.

Wisconsin is proud to be a member of the Department of Transportation.



Freeway Service Teams & Towing Services





Statewide Traffic Operations Center & Incident Notification System

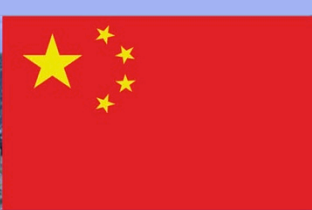
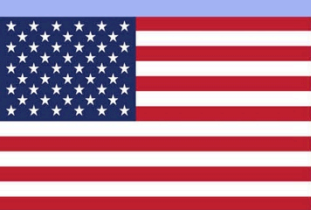




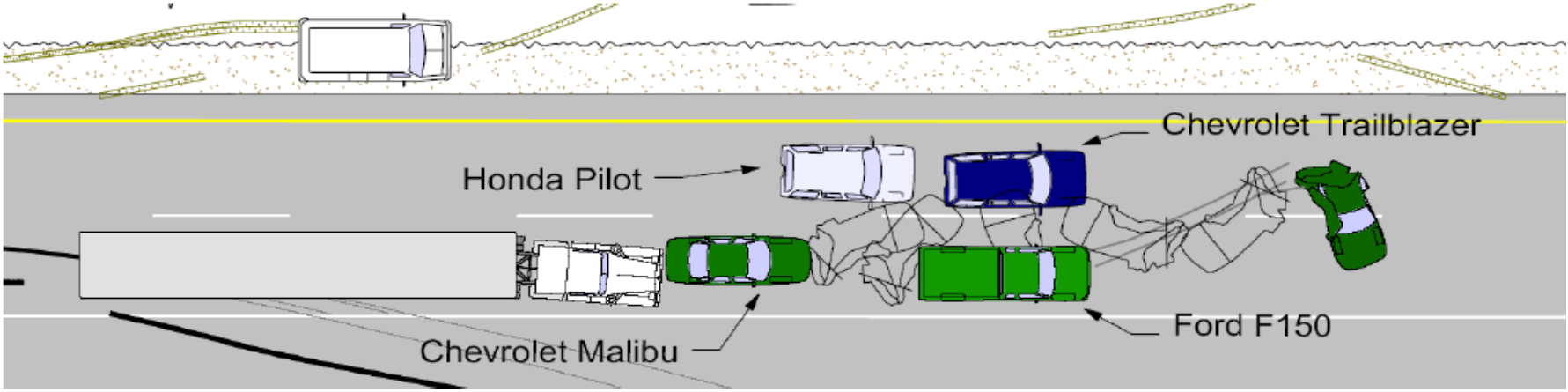
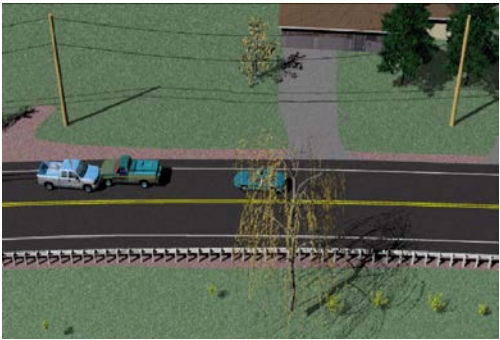
Emergency Transportation Operations (ETO)

- Evacuation Planning
- Interagency Training & Exercises
- Escalation of Incident Notification Process
- National Incident Management System & Incident Command System “Coordination Rules”





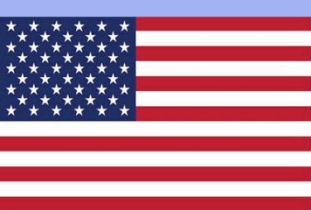
Highway Emergency & Incident Investigation & Review: Traffic Crash Reconstruction





Highway Emergency & Incident Investigation & Review: After Action Reviews & Debriefings





<http://timnetwork.org/>