

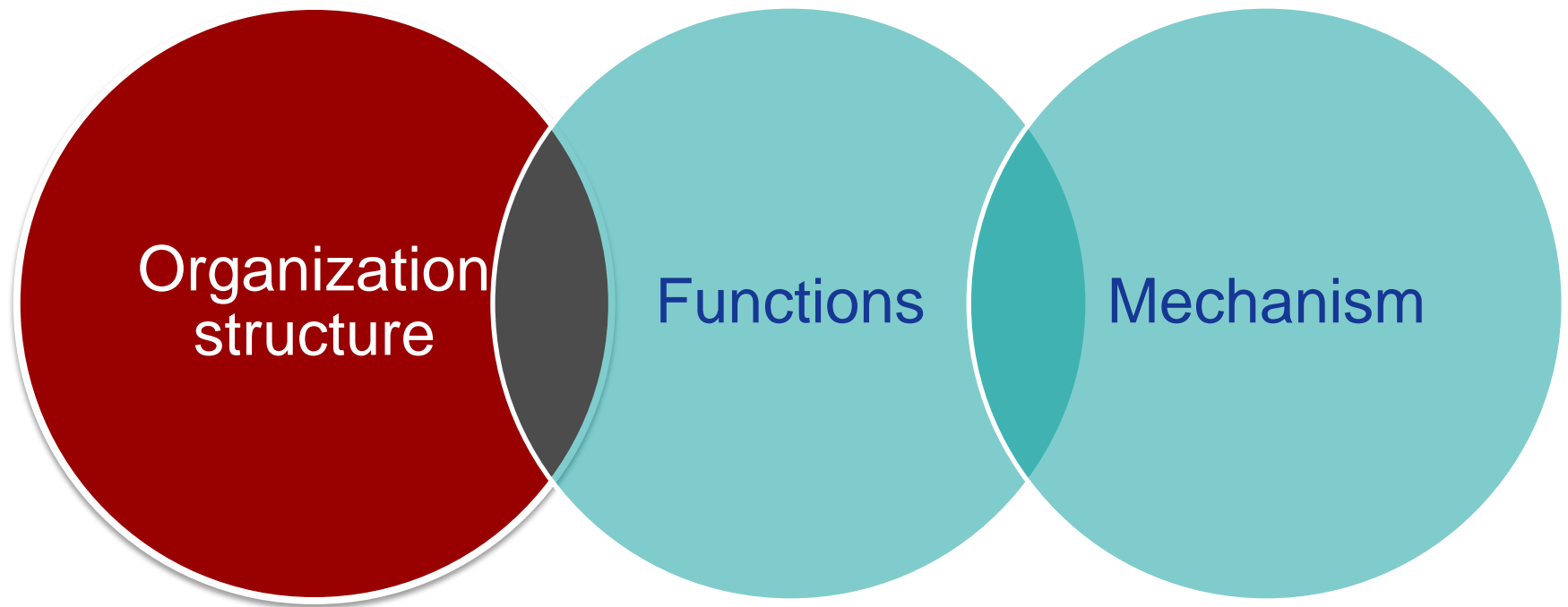


Structure, Functions and Mechanism of Emergency Response System

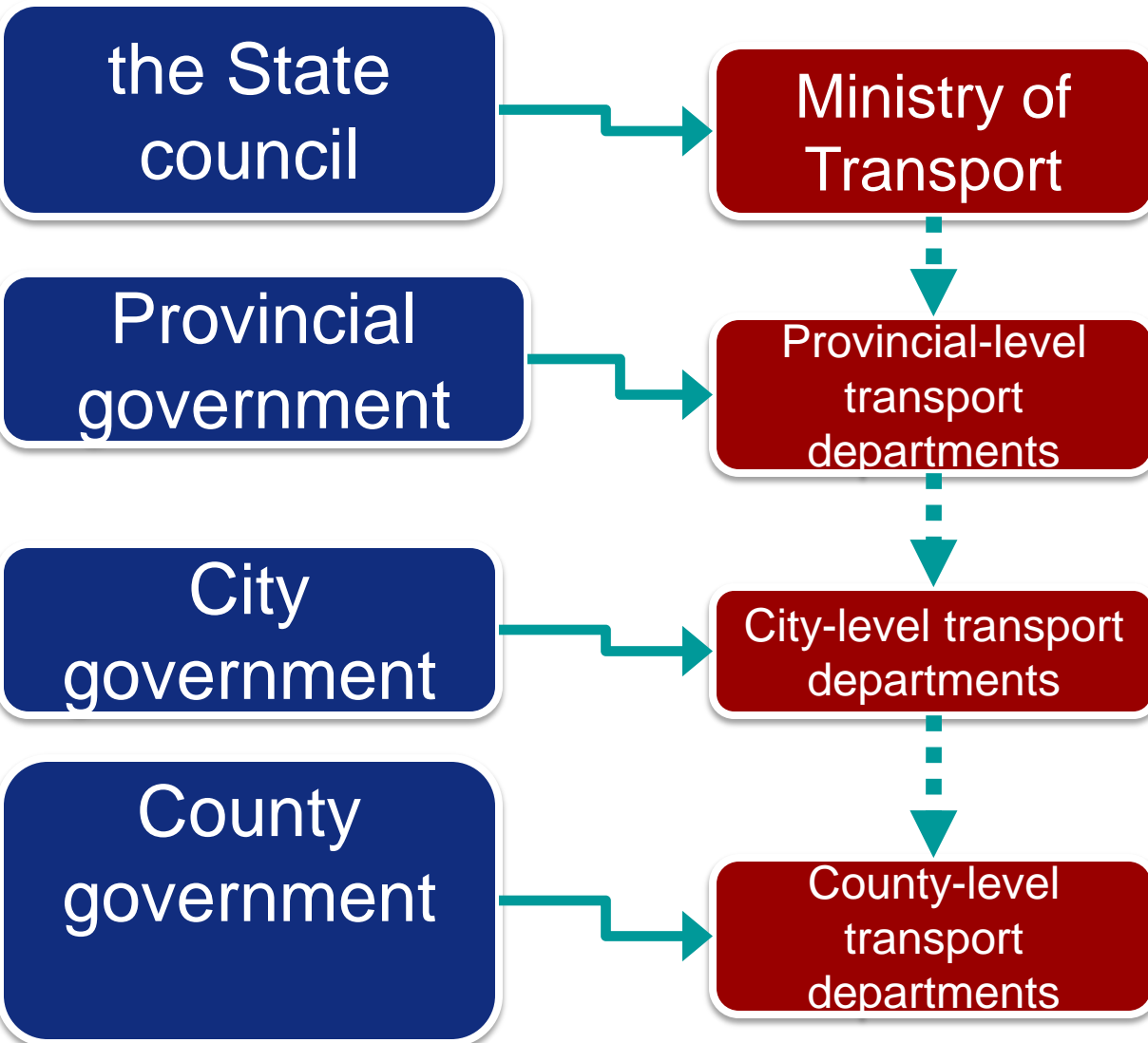
Ministry of Transport

2009.12

Main content

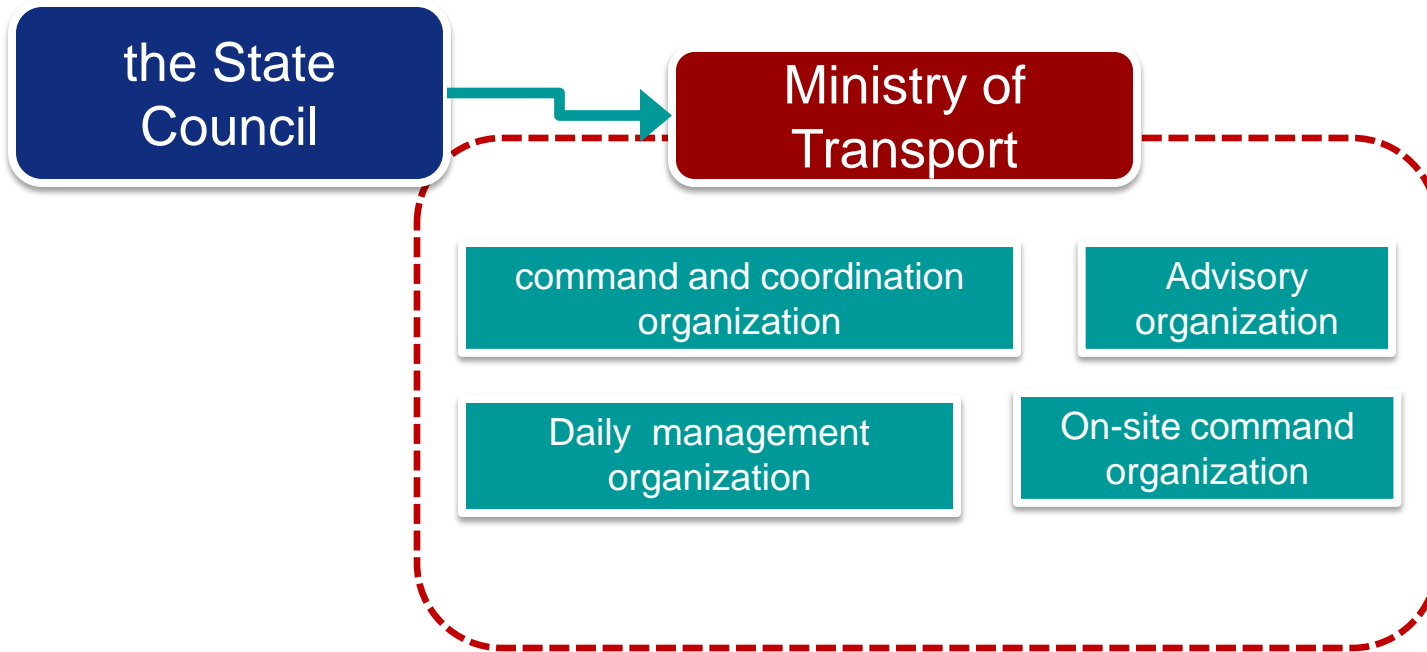


Structure of emergency response organization system



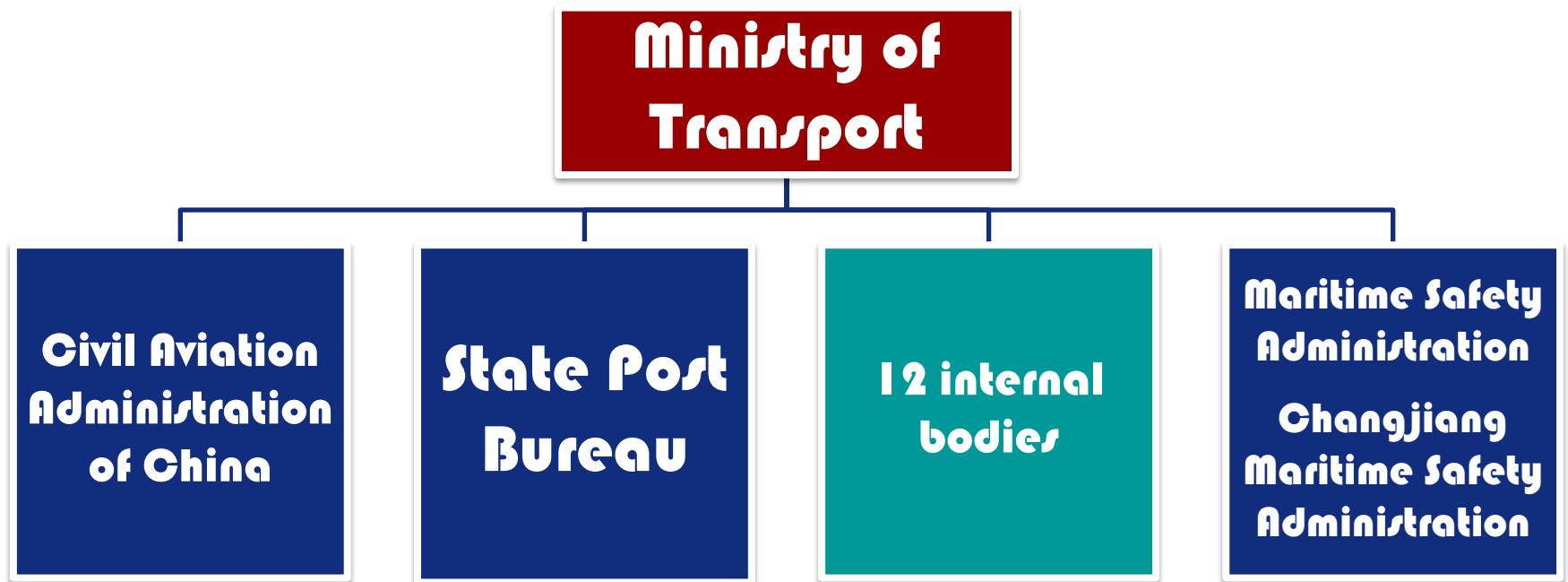
According to the status quo of transport and the characteristics of the management system at different levels in China and in accordance with the principle of combination of regional and central systems while giving priority to regional, the command system of the emergency organization is composed of four-level emergency organizations.

Structure of emergency response organization system

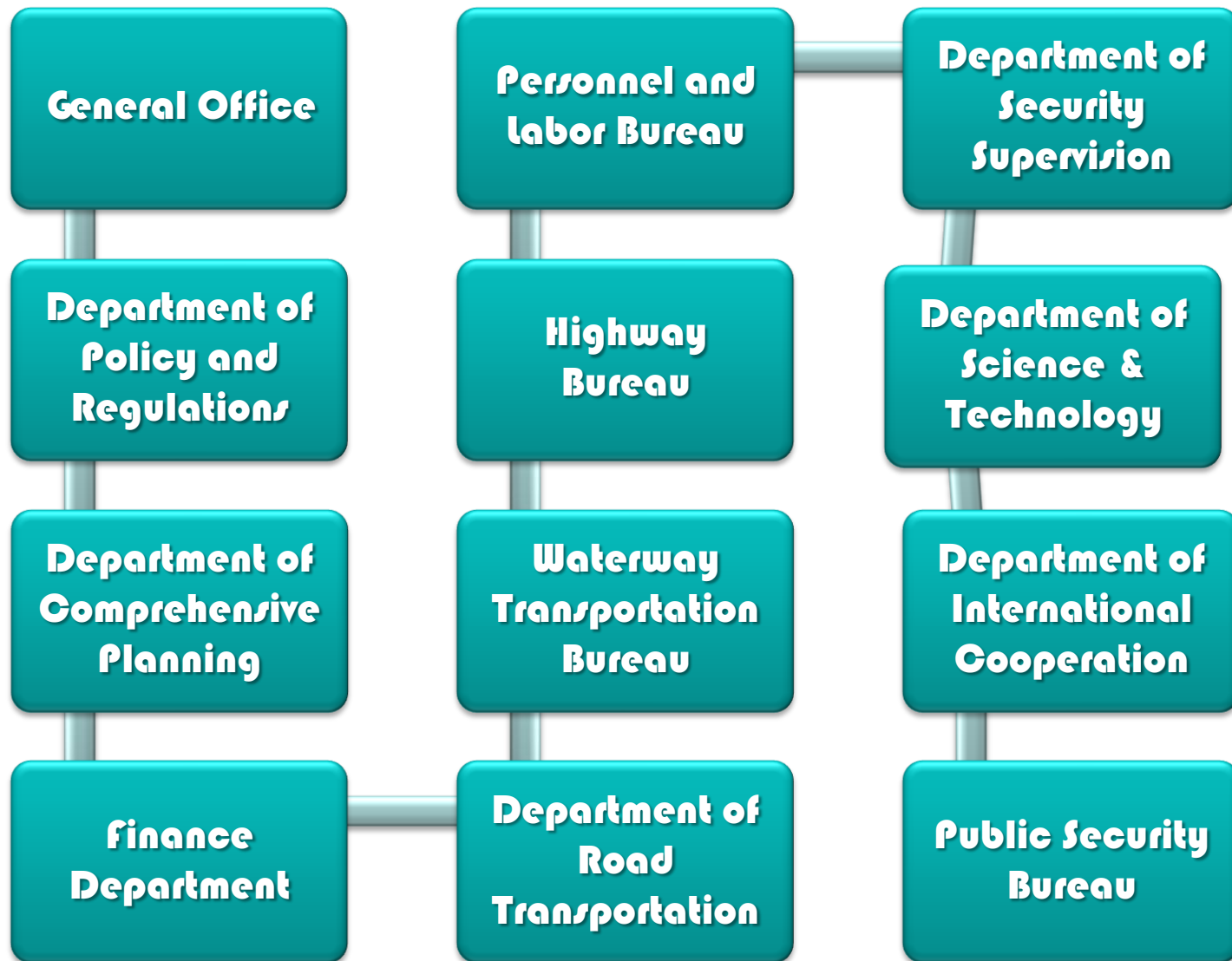


Structure of the state-level organization

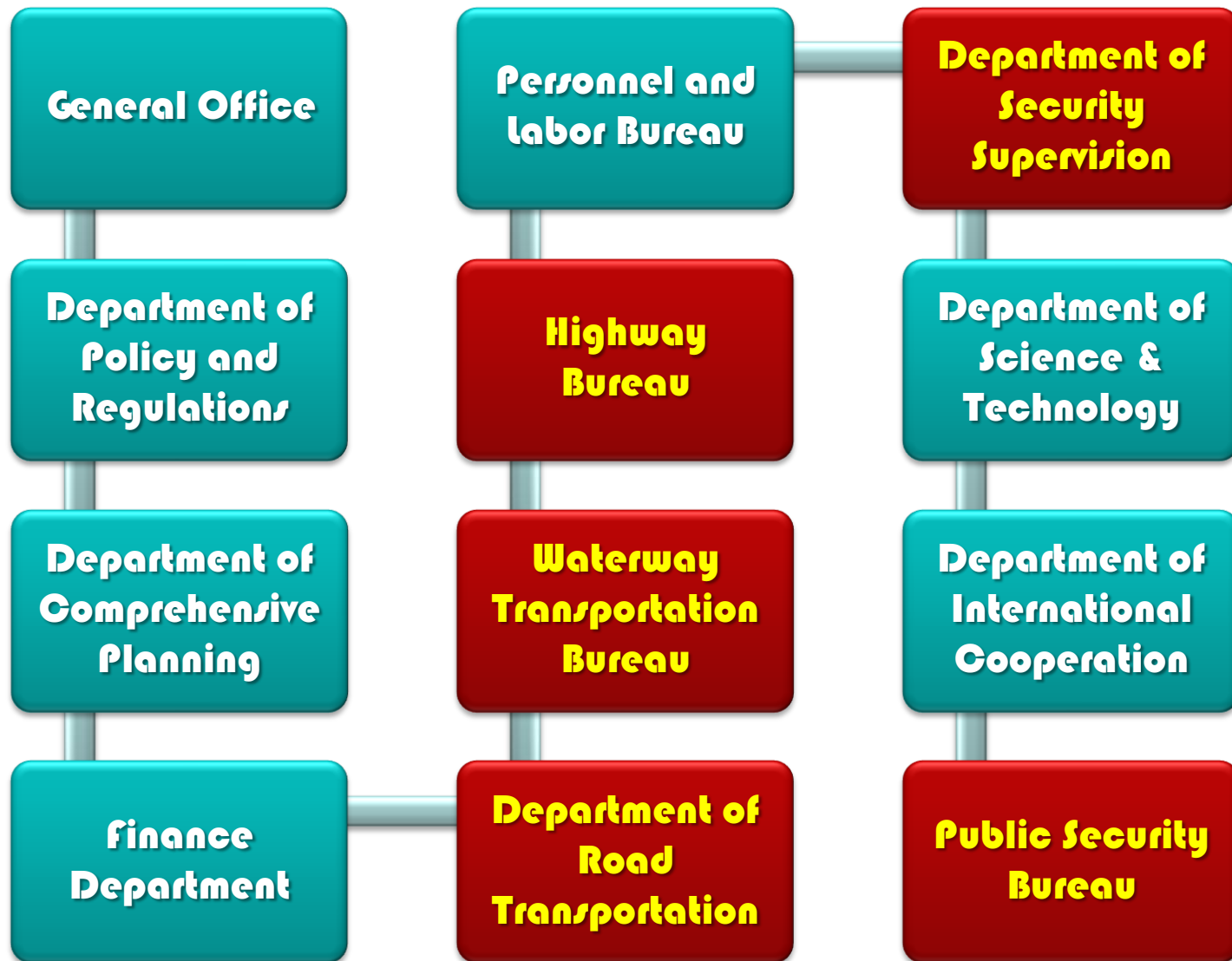
Organization structure of Ministry of Transport



12 internal bodies of Ministry of Transport

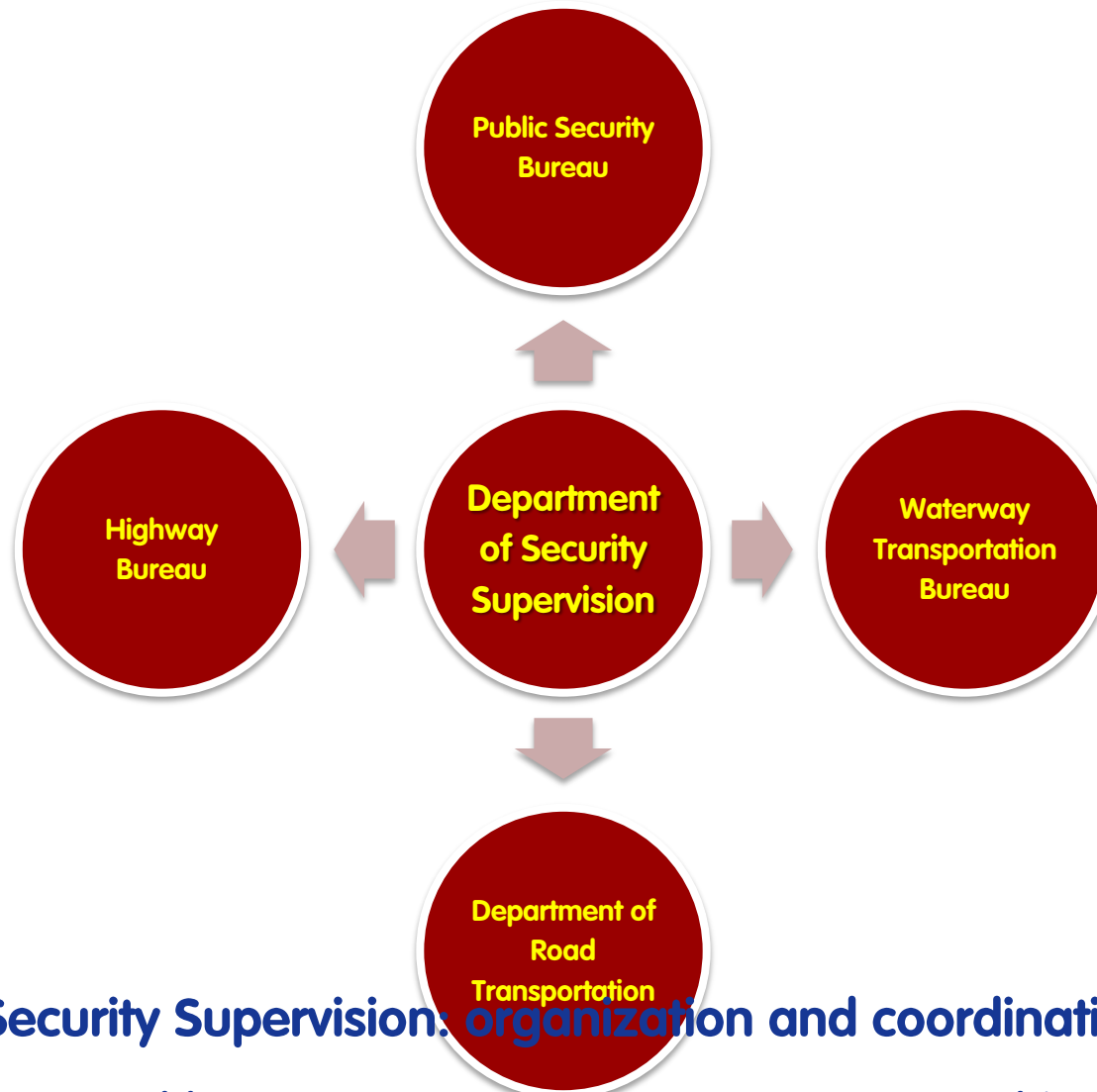


12 internal bodies of Ministry of Transport



Main bodies undertaking the responsibilities of transport emergency

Operation mode of main bodies



Department of Security Supervision: organization and coordination

Other departments and bureaus: concrete management and implementation

Organization and management system of marine search and rescue of China

State Marine Inter-Ministry Conference

Ministry of Transport

Ministry of Public Security

Ministry of Civil Affairs

Ministry of Agriculture

Meteorological Bureau

.....And other departments

Marine
Search
and
Rescue
Center of
China

Organization and management system of marine search and rescue of China

Marine
Search
and
Rescue
Center of
China

Forces of salvage and rescue at sea

Maritime patrolling ships and boats

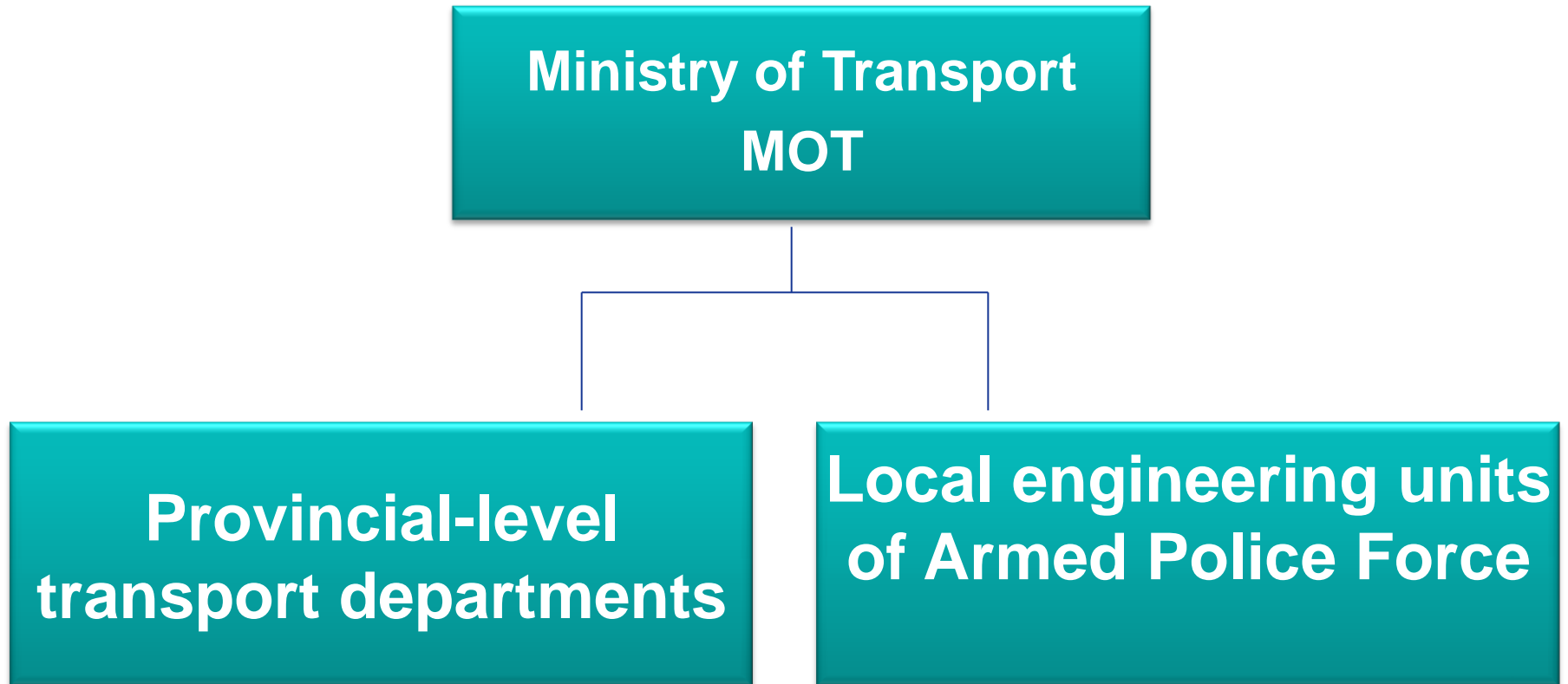
Government-owned ships and planes

Military fleets and planes

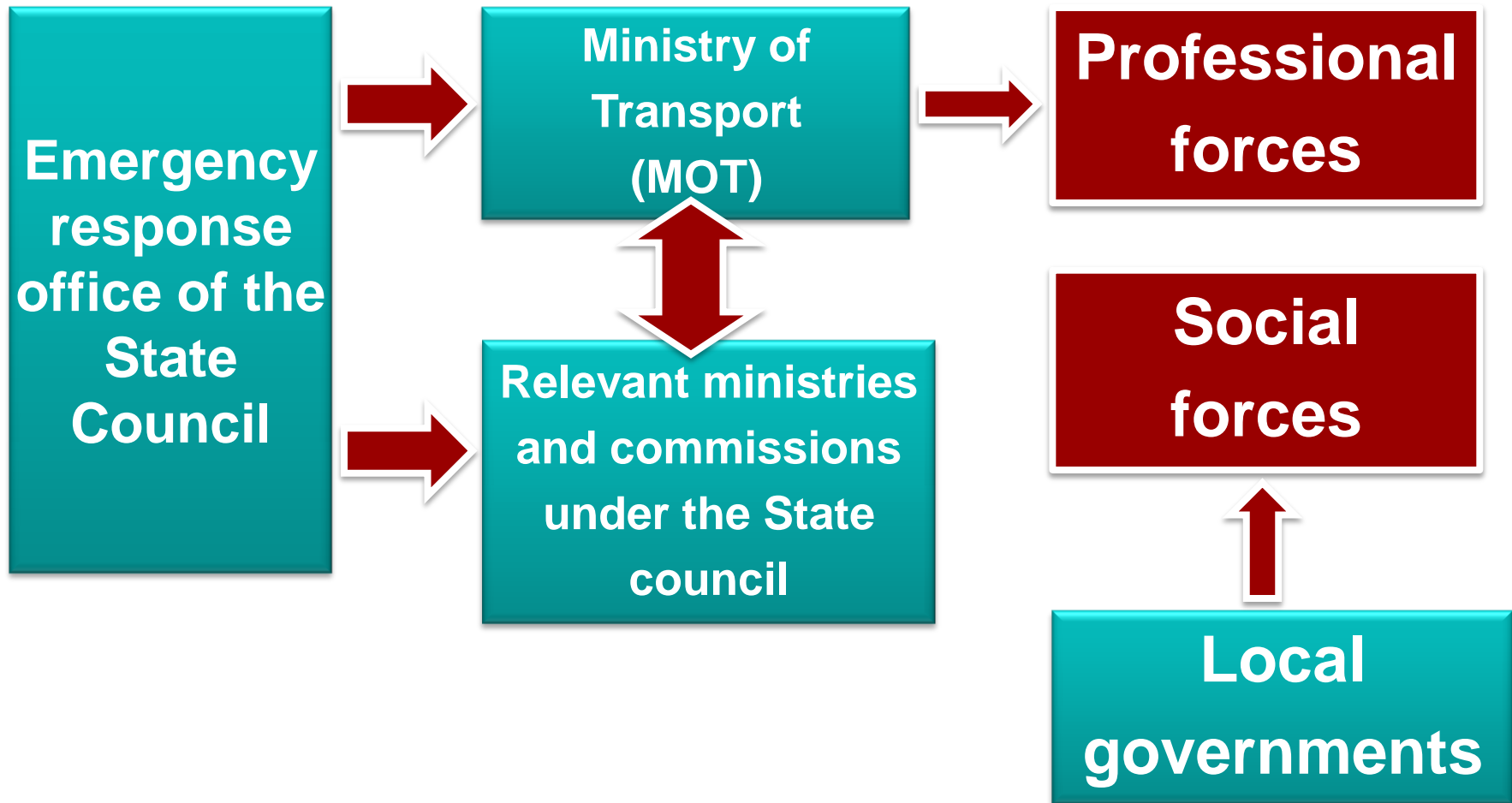
Commercial transporting ships and fishing boats

Other social forces

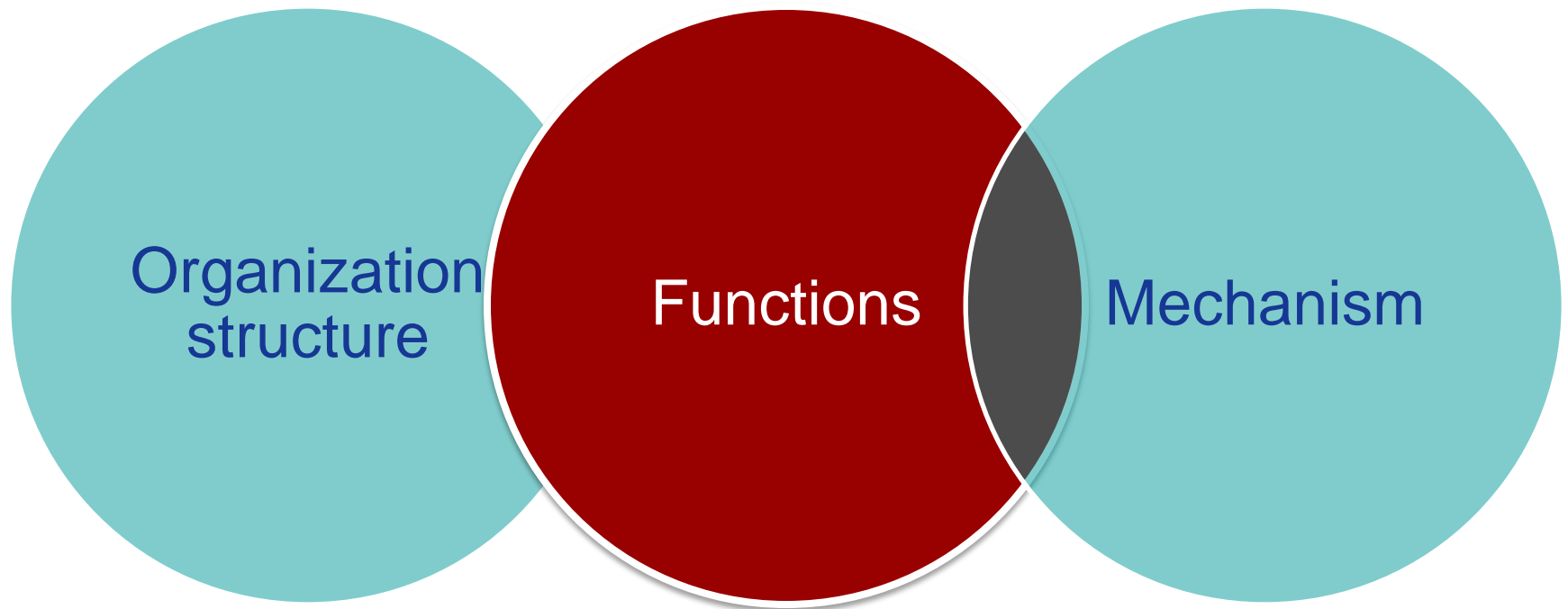
Organization and management system of urgent road repair and recovery



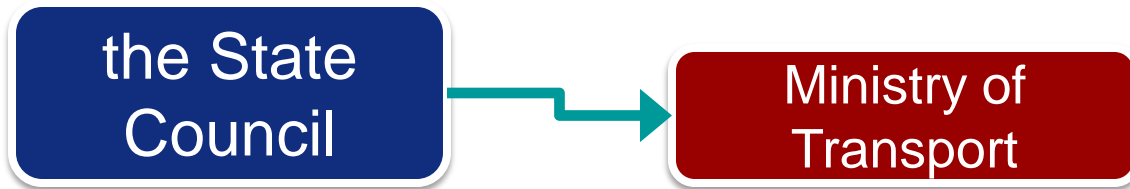
Organization and management system of transport support



Main content

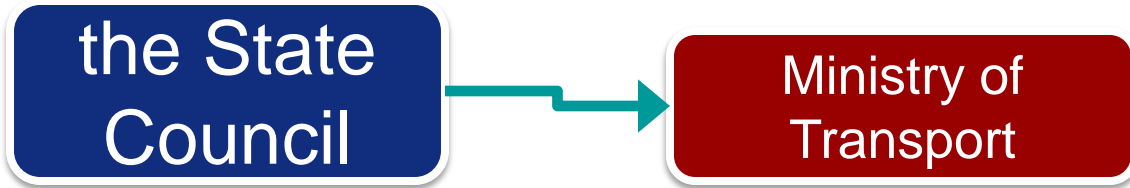


Functions of Ministry of Transport in emergency response



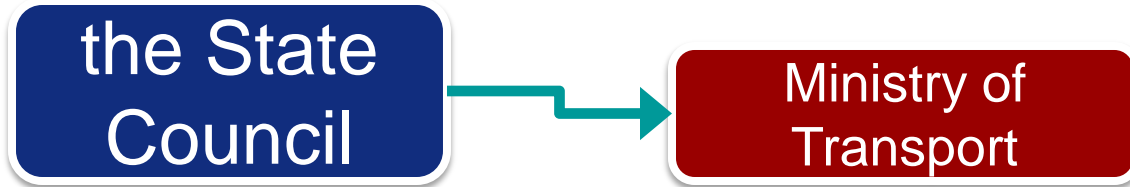
Guide the safe production and emergency response management work of the highway and waterway industry, organize and coordinate the transportation of national key materials and urgent passenger and goods according to the regulations, responsible for the monitoring and coordination of the operation of national expressways and trunk line network and undertake the work related to defense mobilization .

Functions of Ministry of Transport in emergency response



Draft related polices, systems and technical standards of highway and waterway engineering construction and supervise the implementation, organize and coordinate related key project construction and project quality of highway and waterway, guide the management and maintenance of transport infrastructure and undertake the management and maintenance of related important facilities.

Functions of Ministry of Transport in emergency response



Undertake the supervision responsibility of maritime traffic safety, responsible for the works such as maritime traffic control, vessel and related water facility inspection, registration and preventing pollution, marine fire fighting, navigation support, marine search and rescue, communication and navigation, safety of ship and port facilities as well as monitoring and management of dangerous goods transport and responsible for the work related to crew management.

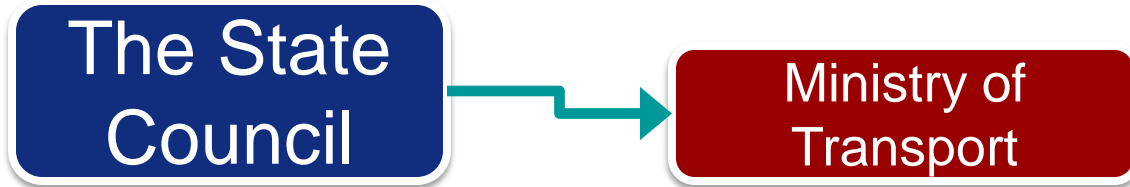
Functions of Ministry of Transport in emergency response

the State Council

Ministry of Transport

Responsible for the emergency handling of maritime traffic accidents, pollution by ship and related water facilities, organize or participate in the accident investigation and disposal work according to law and guide the supervision of local maritime traffic safety.

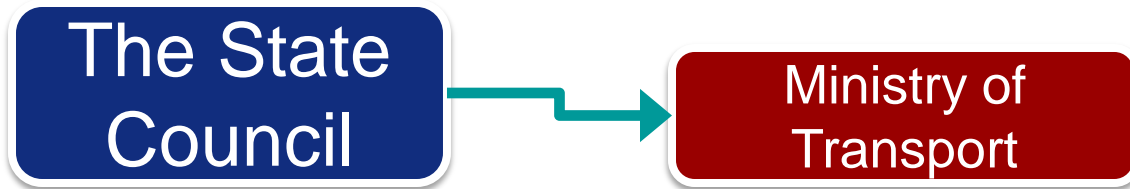
Functions of Ministry of Transport in emergency response



Guide the information construction of transport, monitor and analyze the operations, develop related statistics work and issue related information.

Guide the public security work of shipping, maritime affairs and port and manage the public security team directly under the Ministry of Transport.

Functions of Ministry of Transport in emergency response



Manage the Civil Aviation Administration of China and the State Post Bureau. The Marine Search and Rescue Center of China is set in the Ministry of Transport , which is responsible for organization, coordination and commanding of emergency disposal work such as major marine search and rescue of life, ship pollution accidents and barrier clearance in important navigable water area and undertakes the related concrete work of national marine search and rescue emergency response mechanism.

Functions of Ministry of Transport in emergency response

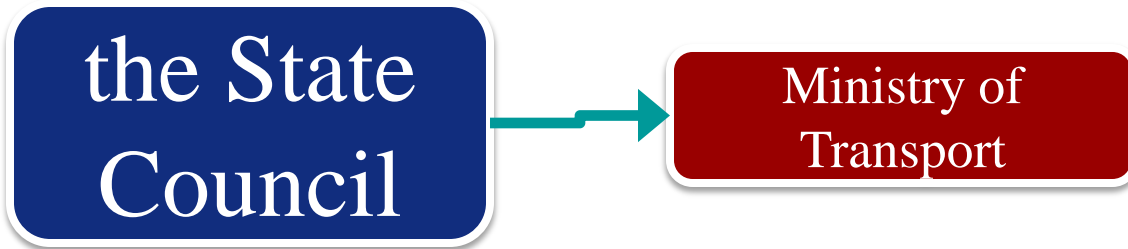
The State Council



Ministry of Transport

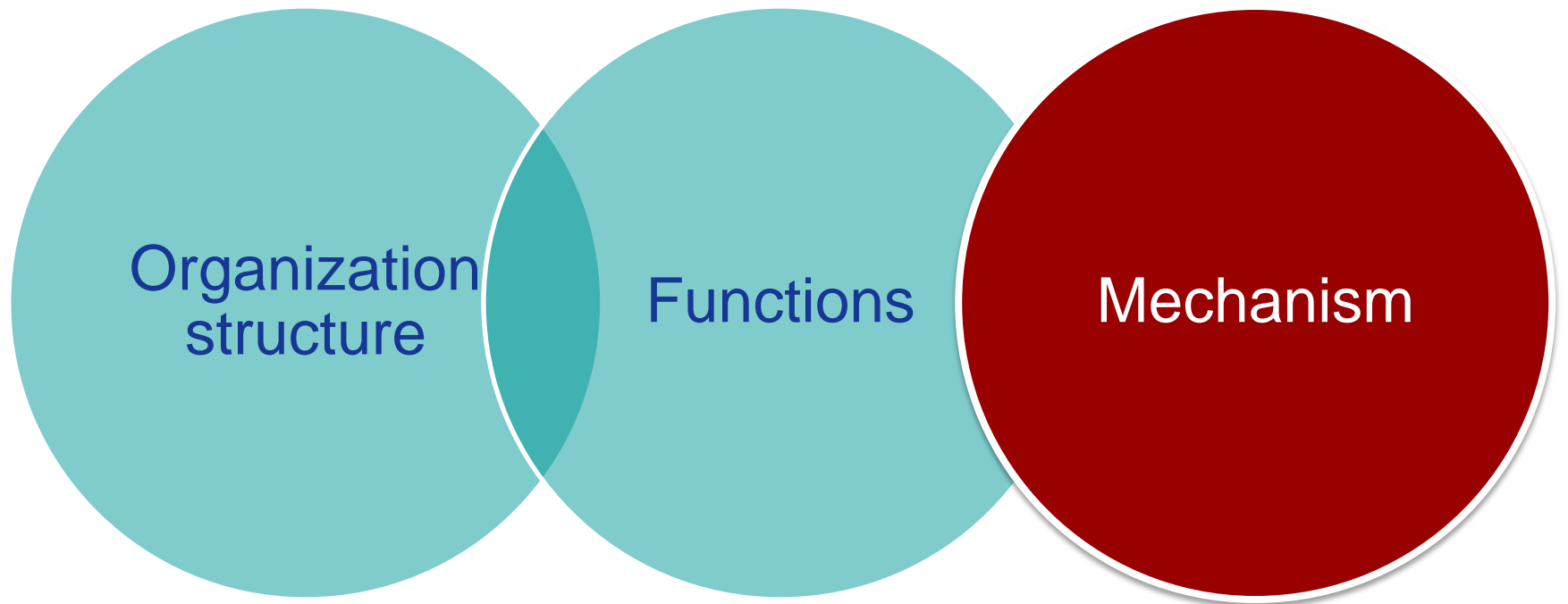
Changjiang River Administration of Navigational Affairs of Ministry of Transport and Zhujiang Navigational Affairs of Ministry of Transport are the local offices of the Ministry of Transport, which perform the administrative management responsibilities of navigation within the jurisdiction.

Functions of Ministry of Transport in emergency response



The Maritime Safety Administration of PRC (Ministry of Transport Maritime Safety Administration) and the maritime safety administrations directly under the Ministry of Transport perform the administrative management and executing law such as supervision and management of marine traffic safety, inspection and registration of ship and related water facilities, preventing ship pollution and navigation support.

Main content



Transport support mechanism

- ❖ The emergency management organizations of the transport departments at all levels can select the road transportation enterprises of passengers and goods with a certain scale within the local jurisdiction to sign the agreement on transferring transportation capacity for emergency accidents with them.



Transport support mechanism

- ❖ According to the Emergency Response Plan of Emergency Public Accidents in Road Transport, when the professional emergency response force can not meet the salvation requirements, the local governments are responsible to mobilize the social forces to participate in the emergency response of the emergency accidents in road transport.



Transport support mechanism

- ❖ **The freezing rain and snow disaster in 2008 has seriously influenced the energy transportation of China. During the emergency transportation of the coal for power generation, the Ministry of Transport has issued the circulation on centralized emergency transportation of the coal for power generation at part coastal transit ports jointly with the National Development and Reform Commission and coordinated with the General Administration of Customs in time to fulfill the registration policy of Chinese-capital ship flying convenience flag during returning to China.**



Transport support mechanism

- ❖ The departments such as marine safety, public security and salvage have actively provided the attentive service for the emergency transportation of coal for power generation. The marine safety departments have established “green channel” for the transportation ships of coal for power generation, simplified the supervision procedure, strengthened the cruise and provided the escort service for the transportation ships of coal for power generation.



Prevention and cure mechanism of epidemic situations



The medical care personnel at the long-distance bus station take the temperature of the passengers in waiting room



The anti-epidemic workers disinfect the vegetable fleet

The transport departments closely cooperate with the anti-epidemic departments during SARS

Prevention and cure mechanism of epidemic situations



The anti-epidemic workers completely disinfect the long-distance bus stations and take the temperature of the arriving passengers



The transport departments closely cooperate with the anti-epidemic departments during SARS

Transport recovery actions



At half past thirteen on May 18th, the first transportation fleet of relief materials entered the worst-hit area--Yingxiu Town of Wenchuan County by land after 28-hour long and difficult journey since the Wenchuan Earthquake of Sichuan took place on 12th. The relief fleet of the transport system has become the first transportation fleet entering Yingxiu.

Ministry of Transport

Organize to build the simply-structured bridge



Transport recovery mechanism



Assemble the emergency transportation capacity from the neighboring provinces to make every effort to ensure the transportation of relief personnel, materials and the disaster-affected people.

Call on the whole transport industry to donate various types of machinery to the disaster-affected area including excavator, loader, bulldozer, dumping truck and generator unit.

The damaged roads of total 53020 kilometers have been repaired urgently within 4 months after the earthquake.

Thanks