

Workflow 3: Batch Printing from a Job Set

1. If reprinting a previously saved Batch Print Job Set use File>Open in the main Batch Print dialog pull down menus to select the .job file for that Job Set. This will populate the dialog with the files to be printed and the associated print specifications. If continuing directly from Workflow 2 above (Creating a New Job Set) then skip this step.
2. From the Batch Print dialog, shown below, select the printer icon.

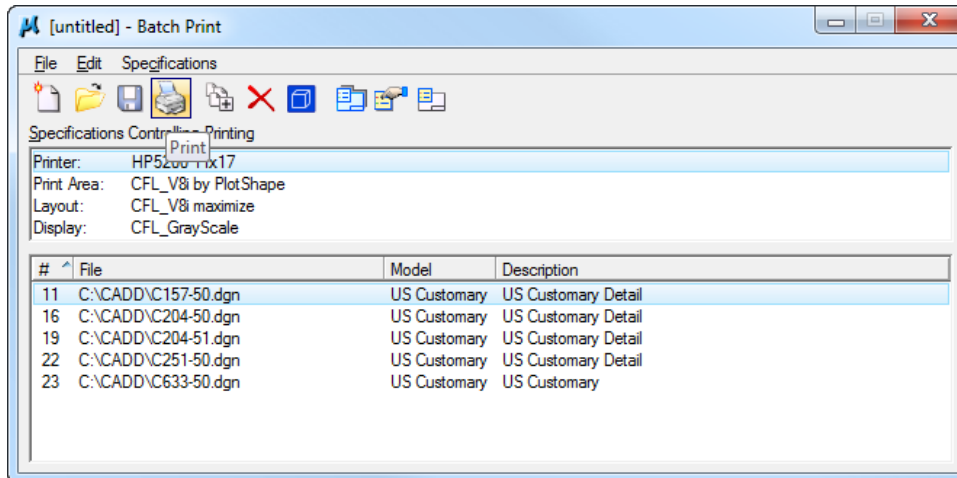


Figure 12-11: Batch Print

3. The Print Batch dialog will activate.

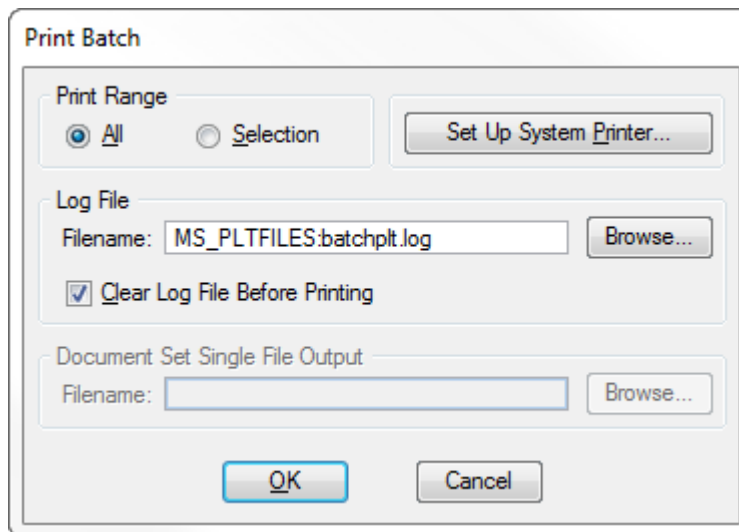


Figure 12-12: Print Batch

4. From this dialog box the user can select a print range, log file, and setup the system printer.



The Set Up System Printer button will take you to the standard windows printer dialog. This should not need to be done at this point.

5. *Select OK and the files will be sent to the printer. A status bar will be displayed during the process, as shown below.*

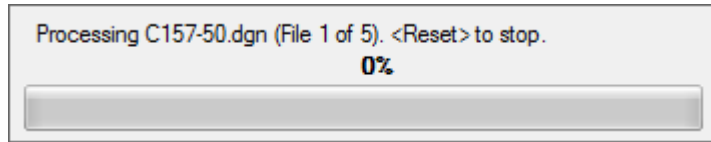


Figure 12-13 Process Status Bar