

Workflow 1: Accessing Batch Printing

1. *CFL employees can run CFL Plot Utility VBA by Key-in: vba run CFLplot. CFL Plot Utility will now be accessible.*
2. *Select the Design Group, and then select the Batch Plot button.*
3. *Select Batch Plot 11x17 to Batch print plan sheets and cross section sheets.*

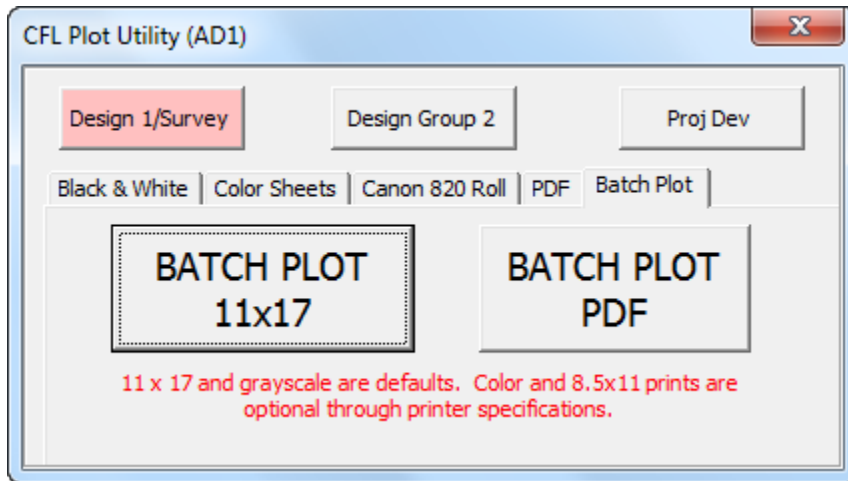


Figure 12-7: CFL Plot Utility- Batch Plot

4. *Once selected, the Batch Print dialog box is activated as shown below. The top bar on this dialog will show the current Job Set. Shown below as [Untitled]. Once a new Job Set is created or an existing Job Set is opened the name will replace [untitled].*

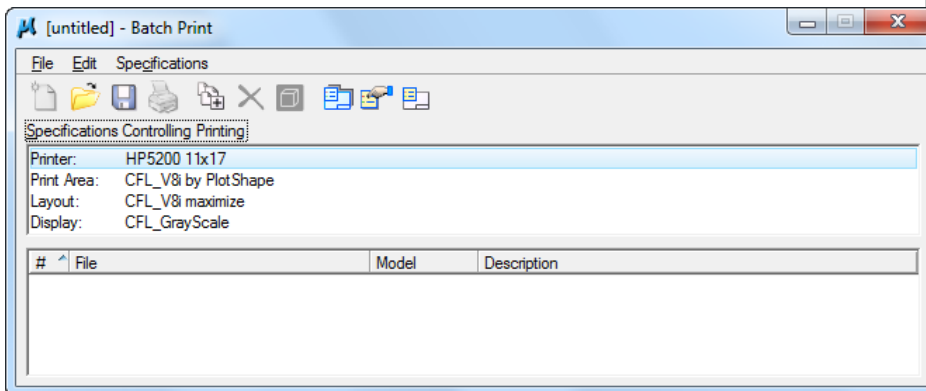


Figure 12-8: Batch Print

5. *To open an existing job set select File>Open and select the desired job.*