

556967 0206A17364 061656967 0206A17364 061
3795621453F265958D4028795621453F265958D401

Behind the Numbers: Exploring Transportation Statistics
BTS Webinar Series

3795 1453F265958D4568795 1453F265958D45
39314580632547D6E200789314580632547D6E2007

February 23, 2016



The Travel and Tourism Satellite Account for the United States

Sarah Osborne

Bureau of Economic Analysis

Washington, D.C.

February 23, 2016

sarah.osborne@bea.gov



What does the Travel and Tourism Satellite Account (TTSA) provide?

- Quantifies the impact of travel and tourism activity on the economy
- Compares travel spending by households, business and government
- Tracks the value of tourism exports (inbound tourism) and imports (outbound tourism)
- Measures the contribution of tourism to GDP

Where to find the TTSA

- Quarterly estimates are released online at U.S. Bureau of Economic Analysis (BEA)
 - Check the release schedule for dates!
 - [BEA 2016 News Release Schedule](#)

- Annual estimates are released in the *Survey of Current Business*
 - [U.S. Travel and Tourism Satellite Accounts](#)

How is the TTSA constructed?

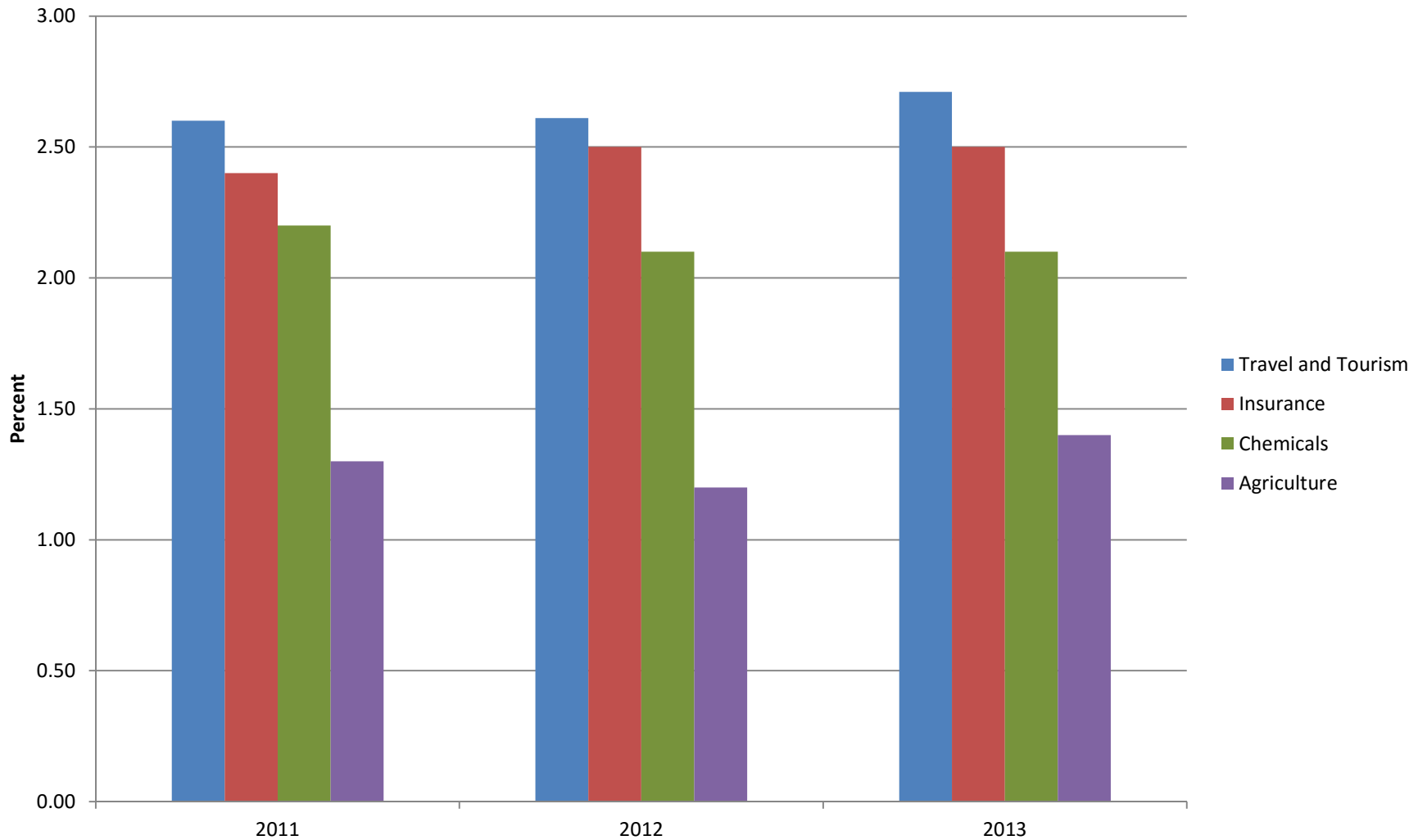
- The foundations for the TTSA are the Input-Output (I-O) accounts
 - Benchmark I-O tables (available every five years)
 - Annual I-O tables (available each year)

- Quarterly TTSA estimates are extrapolated using the National Income and Product Accounts (NIPAs)
 - Air transportation
 - Accommodations
 - Auto rentals
 - Food services

TTSA “mini make” table

		INDUSTRY							
		Traveler Accommodations	Food Svcs & Drinking Places	Air Transportation	Automotive Rental & Leasing	Travel Arrangement & Reservation Svcs	...	All Other Industries	Dom Prodn at Prod Prices
COMMODITY	Traveler Accommodations								
	Food Svcs & Drinking Places								
	Air Transportation Svcs (Dom)								
	Air Transportation Svcs (Int'l)								
	Automotive Rental								
	Other Vehicle Rental								
	Travel Arrangement & Reservation Svcs.								
	...								
Industry output		191,082	515,131	154,634	...	41,709	...	18,177,792	25,785,367
Intermediate inputs		71,048	256,537	89,074	...	20,638	...	8,151,408	11,977,828
Value added		120,034	258,594	65,561	...	21,071	...	10,026,384	13,807,539
Compensation of employees		7,819,371
TOPI, less subsidies		963,153
Gross operating surplus		5,025,015

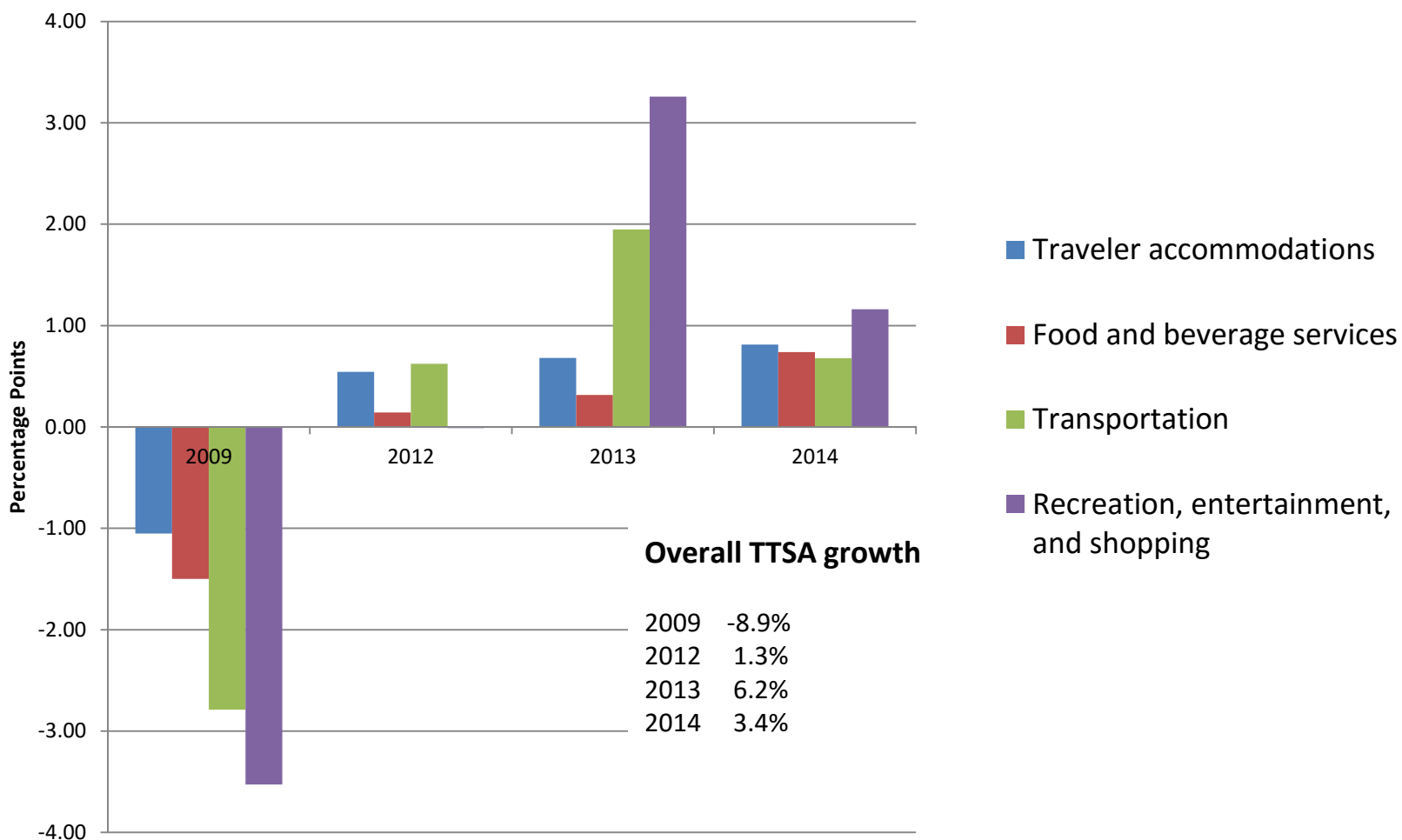
Travel and tourism as a percent of GDP



U.S. Bureau of Economic Analysis

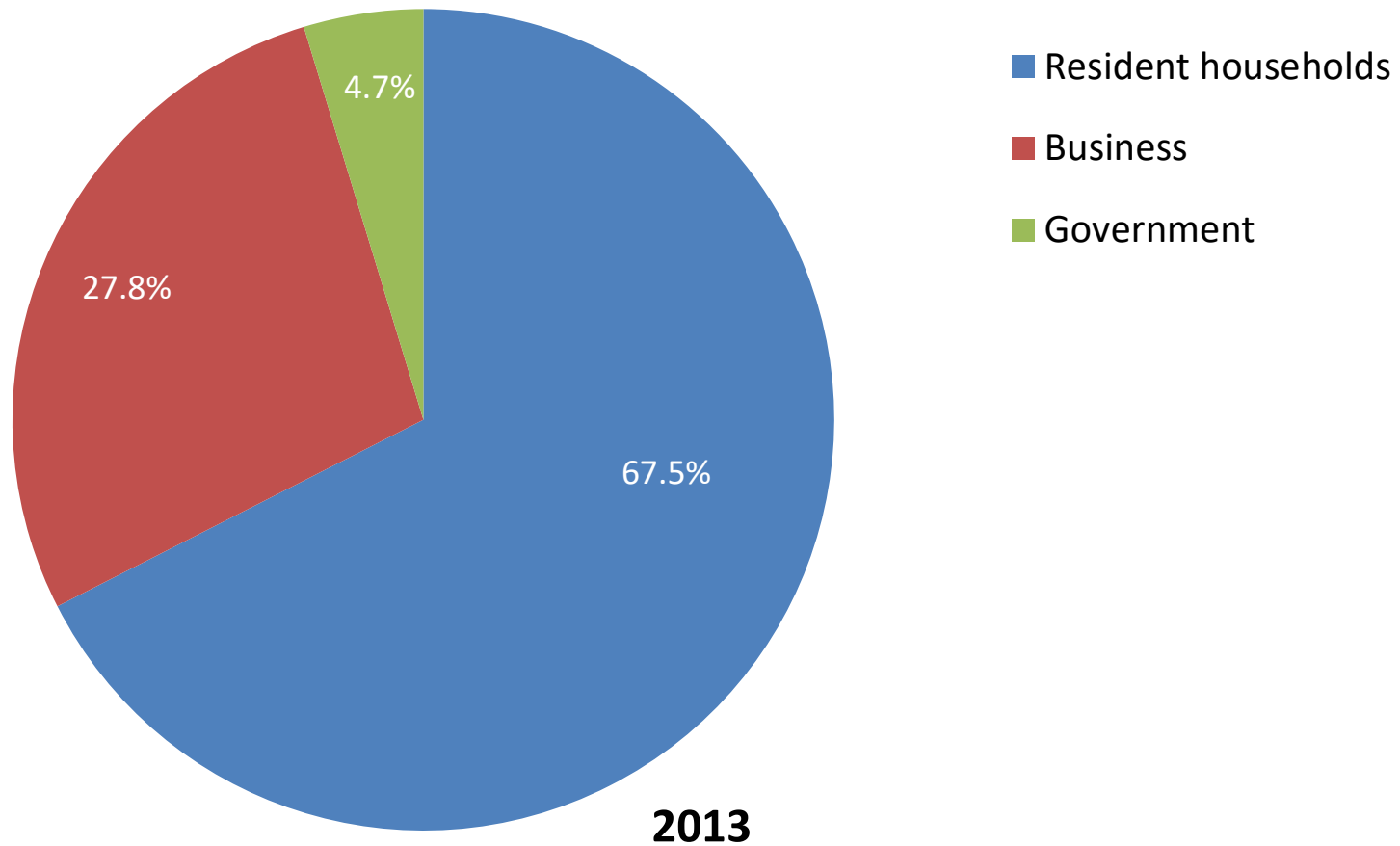
bea.gov

Contributions to annual growth in real tourism output 2009, 2012-2014



U.S. Bureau of Economic Analysis

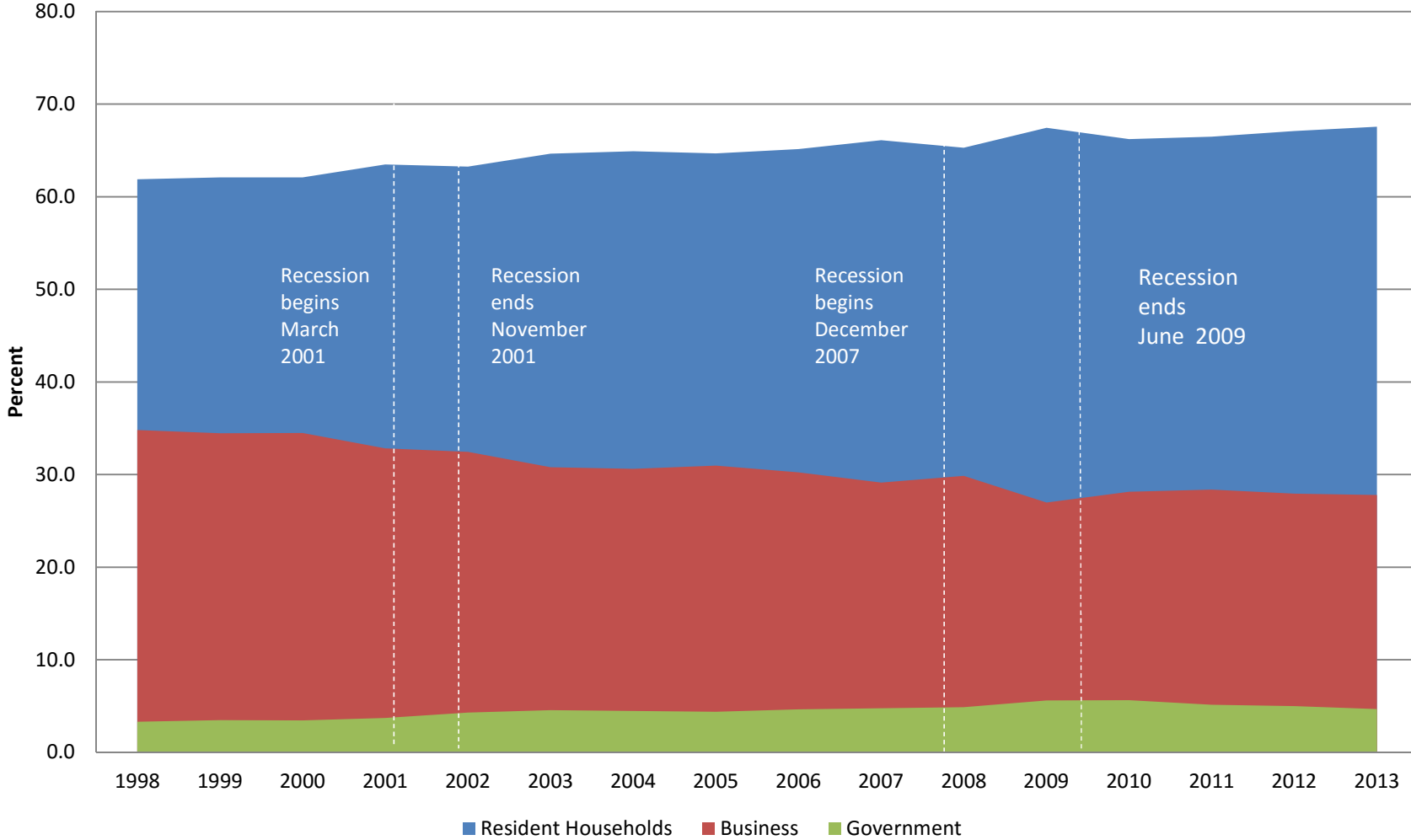
Travel and tourism by class of consumer



U.S. Bureau of Economic Analysis

bea.gov

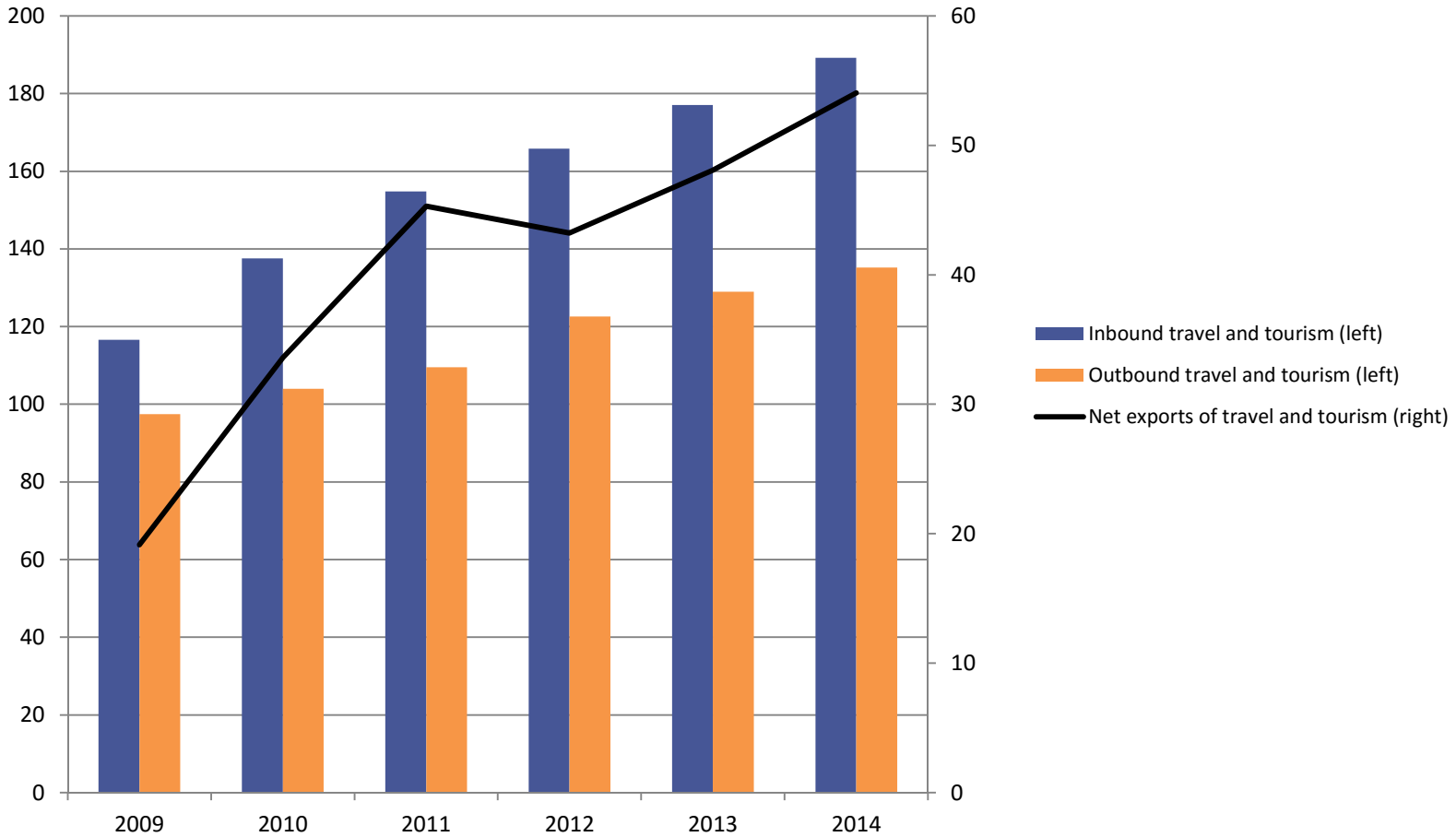
Class of consumer and the business cycle



Source: U.S. Bureau of Economic Analysis and National Bureau of Economic Research

How does travel and tourism affect our balance of trade?

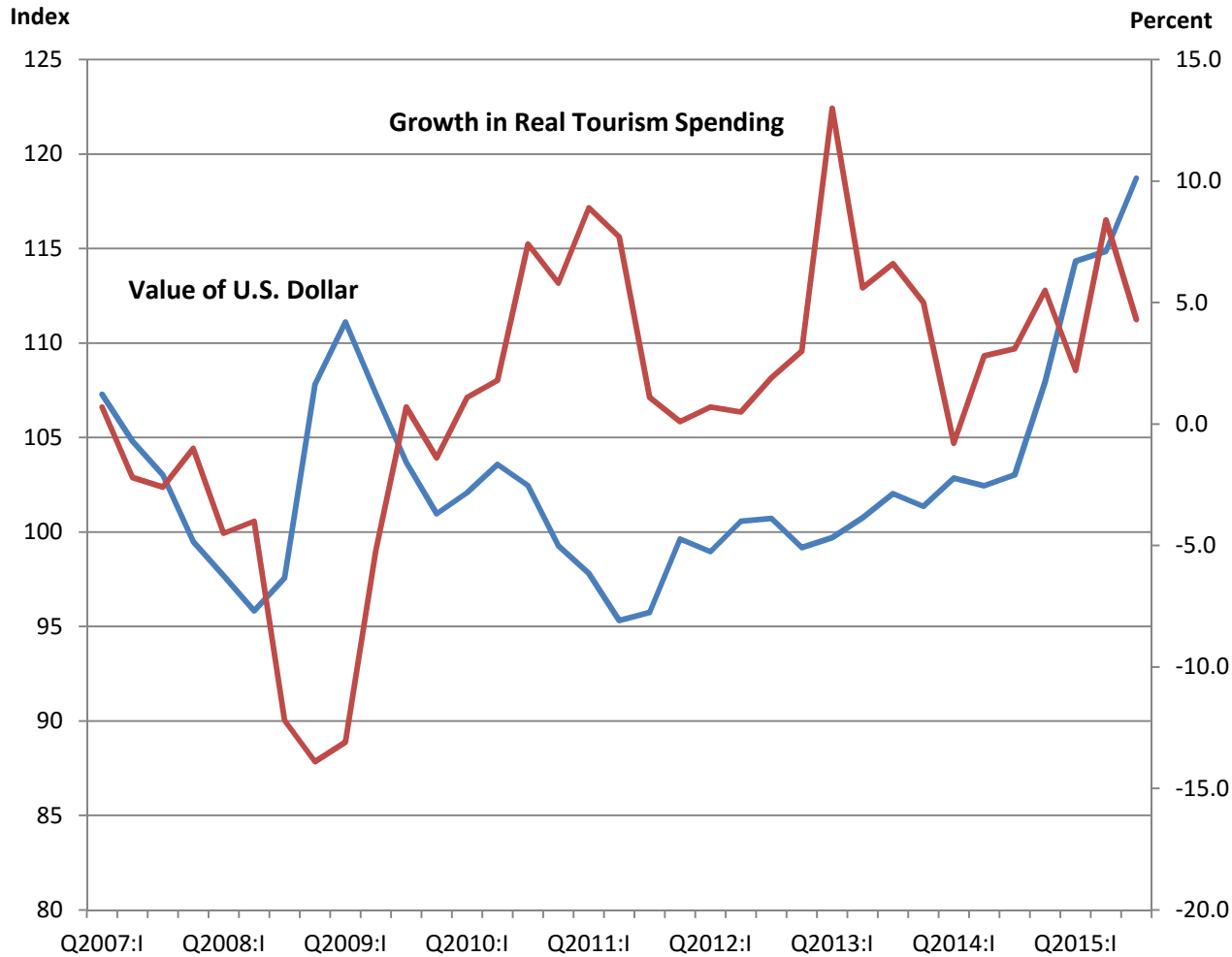
Billions of dollars



U.S. Bureau of Economic Analysis

bea.gov

How does the value of the U.S. dollar affect tourism?



Source: Federal Reserve Bank of St. Louis and BEA

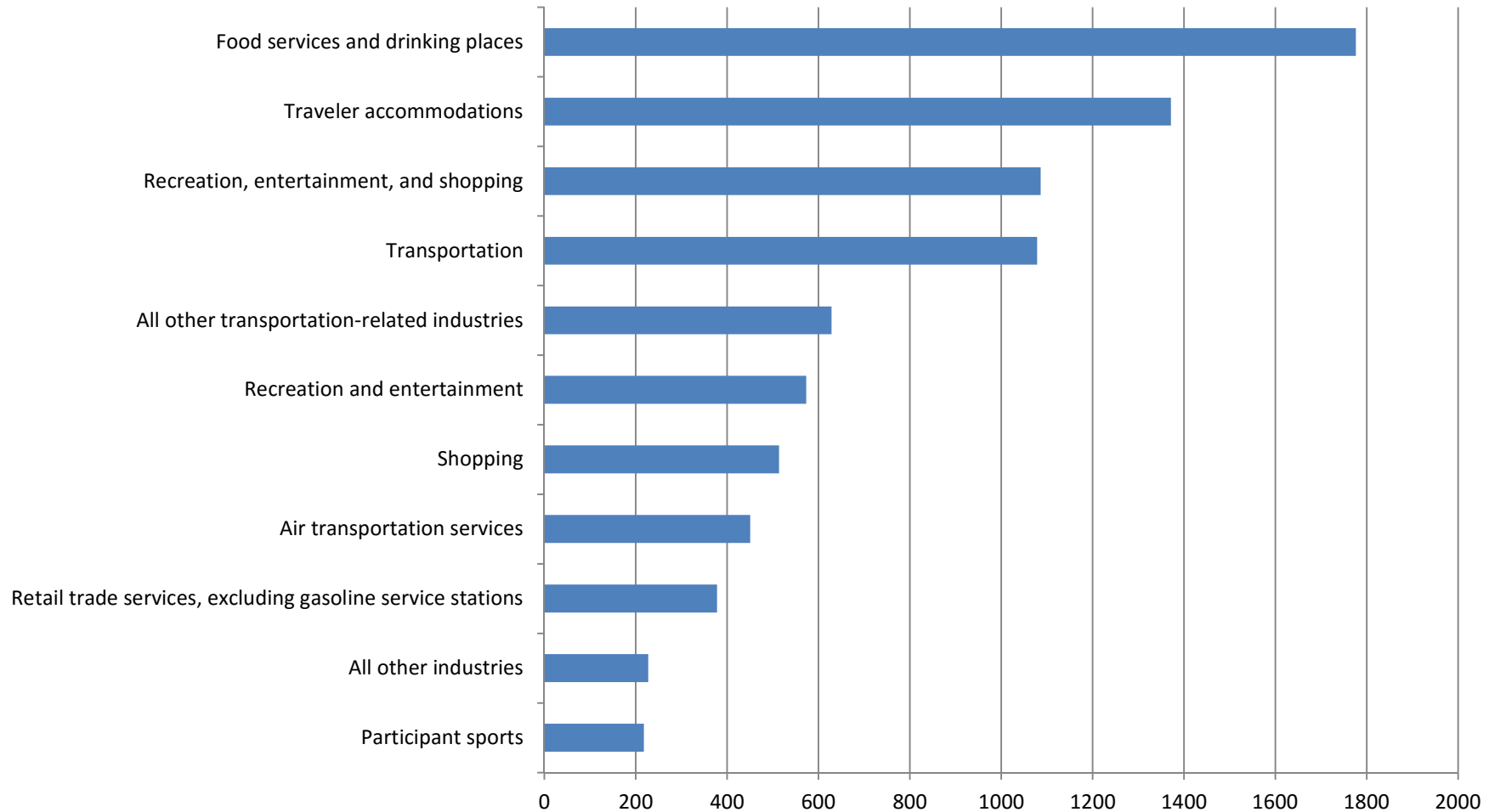
bea.gov

How many people work in travel and tourism?

- In 2014, 7.9 million persons worked in travel and tourism
 - 5.5 million directly (airline pilots, hotel staff...)
 - 2.4 million indirectly (airline caterers, hotel toiletry manufacturers...)

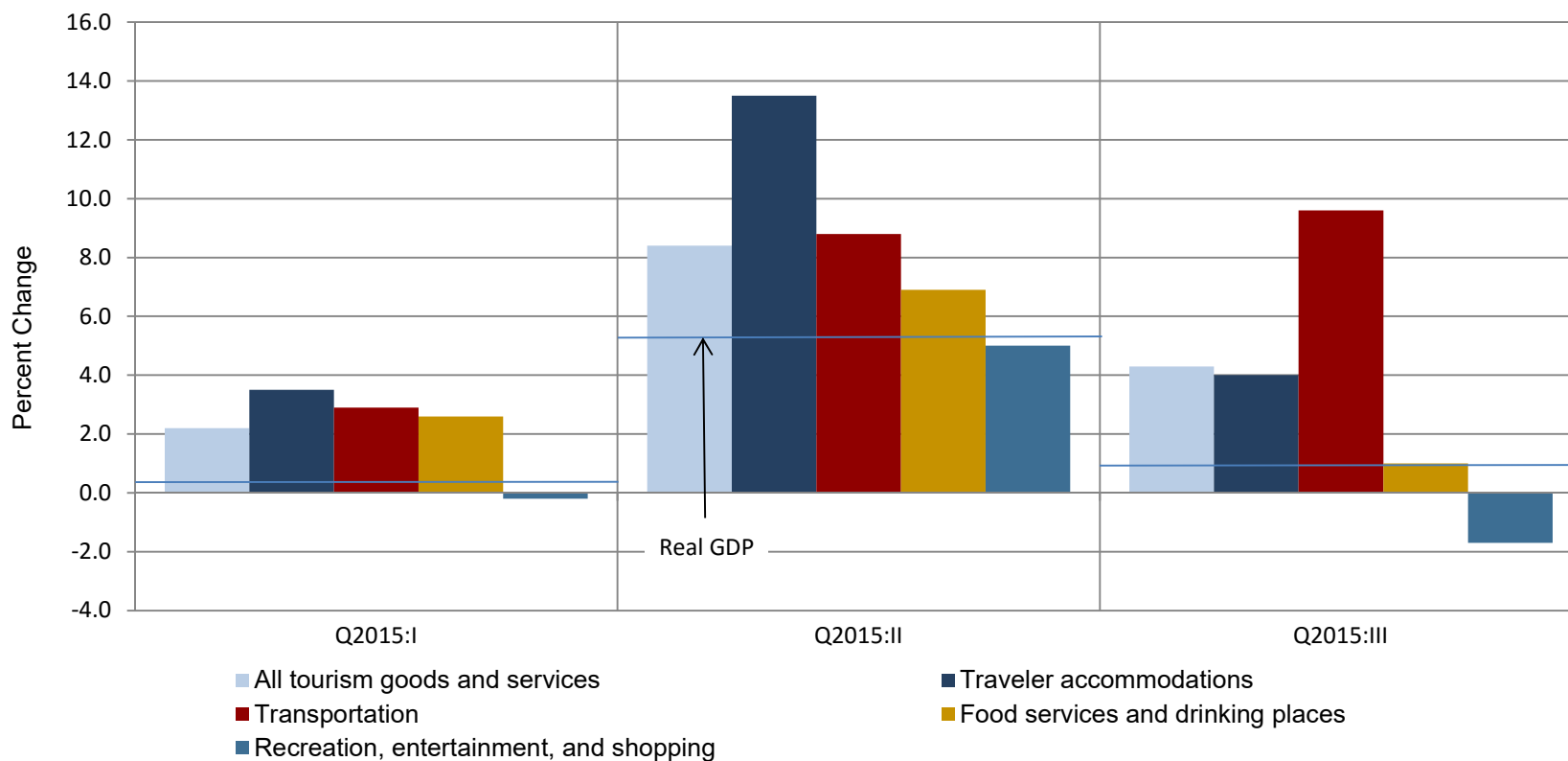
Where are the tourism jobs?

Employment by Tourism Industry, 2014 [Thousands]



Results from our latest release, 2015 third quarter

Chart 1. Real Tourism Spending



U.S. Bureau of Economic Analysis

Who makes use of these data?

- Data users
 - Over 1,400 subscribers to the account
 - Trade journals use our releases as the basis for articles
 - The Congressional Travel and Tourism Caucus
 - The Secretary of Commerce
- What they do with the results
 - Guide policy discussions and legislation
 - Compare a local area's tourism to the nation's
 - Track employment in this sector



TTSA Q&A

Transportation Satellite Accounts

U.S. Department of Transportation
Bureau of Transportation Statistics

Overview

The Transportation Satellite Accounts creates a comprehensive means for measuring the contribution of transportation services to the national economy.

- Other national measures only explicitly show the value of transportation added by transportation industries
- TSAs capture the value of transportation added by non-transportation industries and households

Transportation Satellite Accounts: Derivation

Extension to the input-output (I-O) accounts produced by the Bureau of Economic Analysis.

- I-O accounts show the transportation value added by air, rail, water, truck, transit and ground passenger transportation, pipeline, other transportation and support activities, and warehousing and storage.
 - Known as for-hire transportation
- TSAs add on to I-O accounts. Show value of air, rail, water, and truck transportation produced and used within non-transportation industries.
 - Known as in-house transportation
- TSAs also show value of household's contribution transportation via the depreciation of household vehicle(s)

Transportation Satellite Account: Selected Components

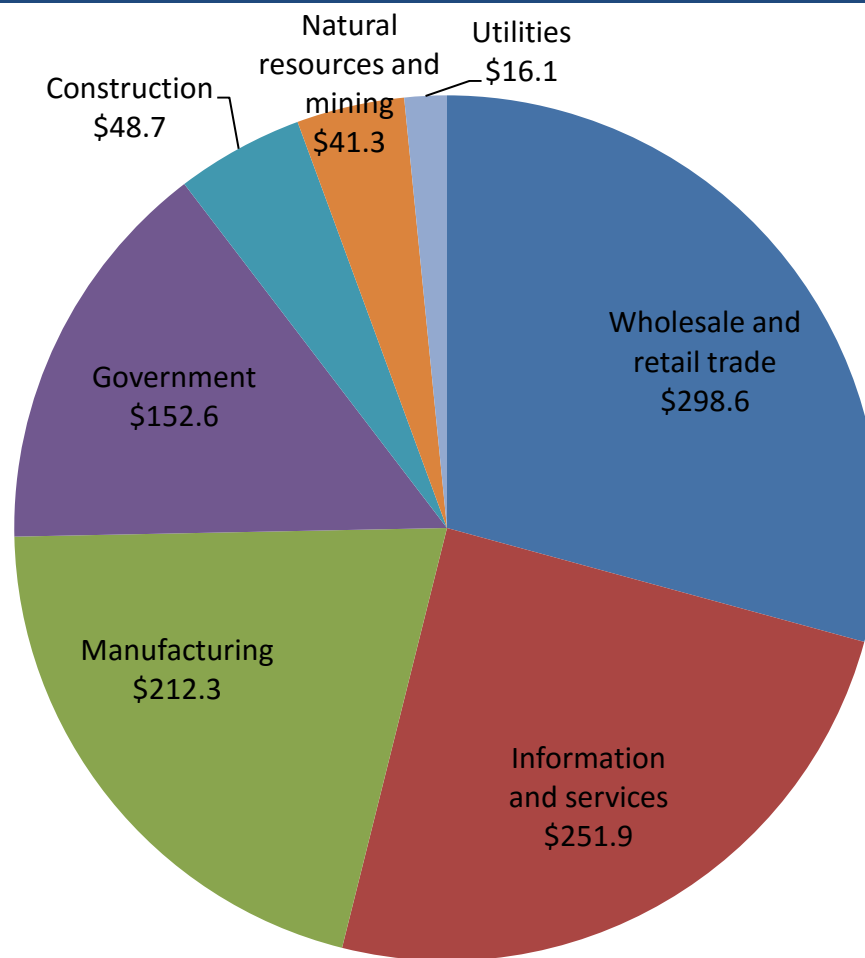
- **Use table:**

Shows the value of commodities used by each industry during production and the contribution of each industry to gross domestic product (GDP).

Useful in finding the:

- Amount of transportation used by an industry
- Contribution of transportation modes to GDP

Use of Transportation by Sector (2012)

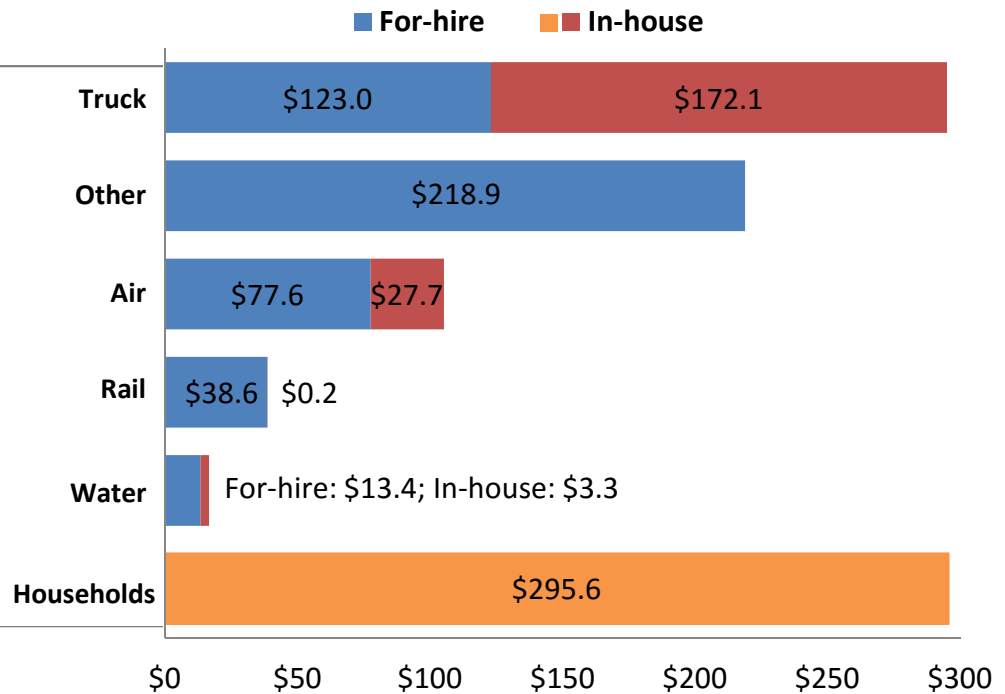
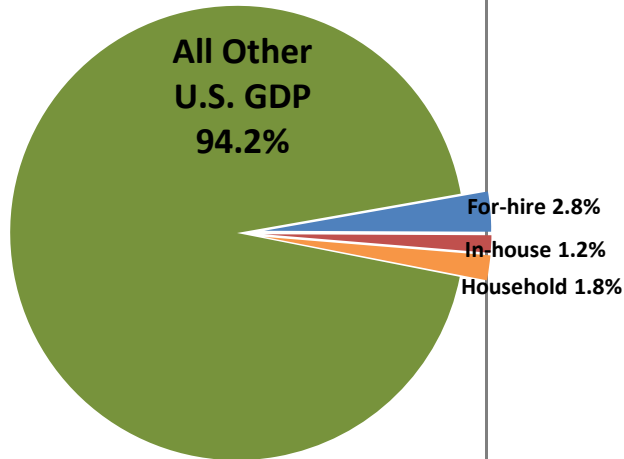


Contribution of For-Hire and In-House Transportation to U.S. Gross Domestic Product (GDP) (2012)

Economic Activity

Contribution to GDP

Total GDP = 16,540 billion



Transportation Satellite Account: Selected Components

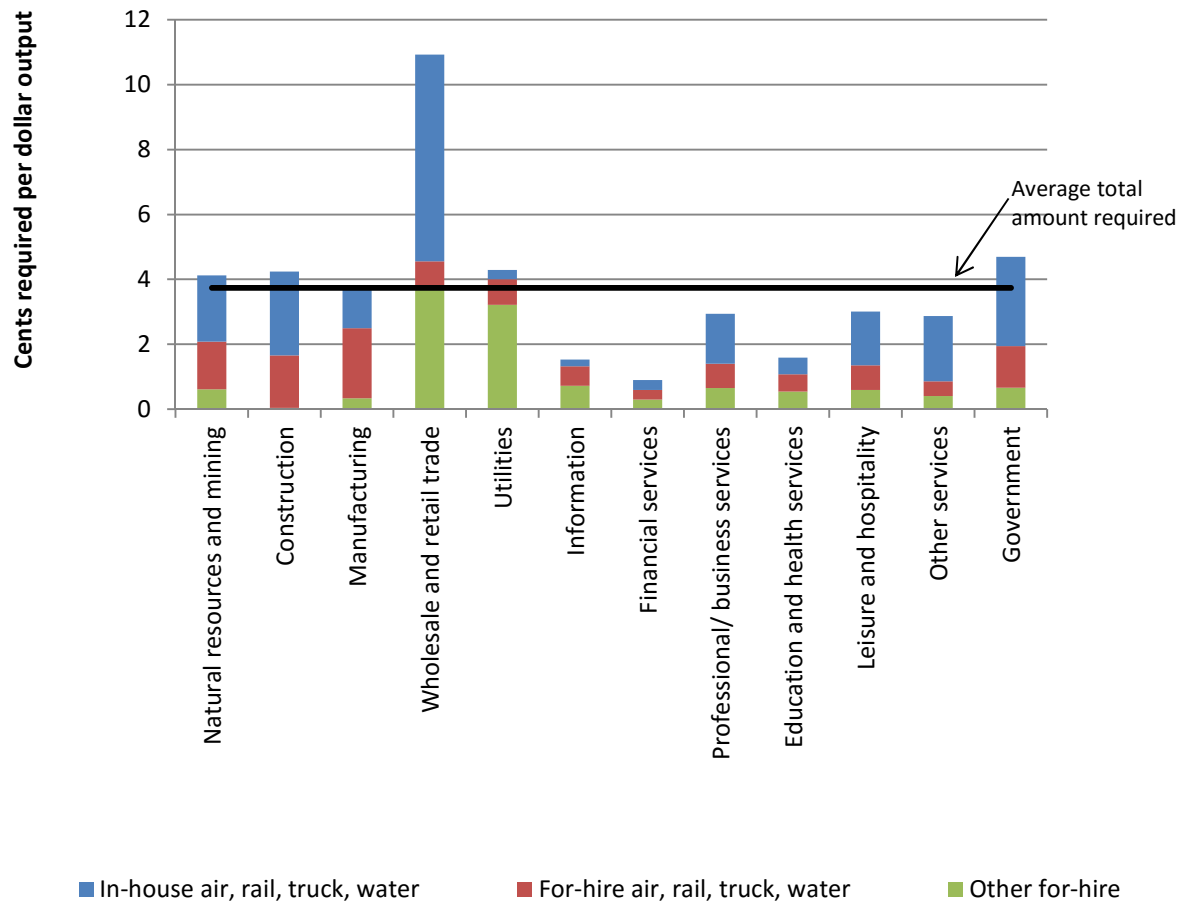
- **Direct requirements table:**

Value of commodities used by each industry during production as per dollar of industry output.

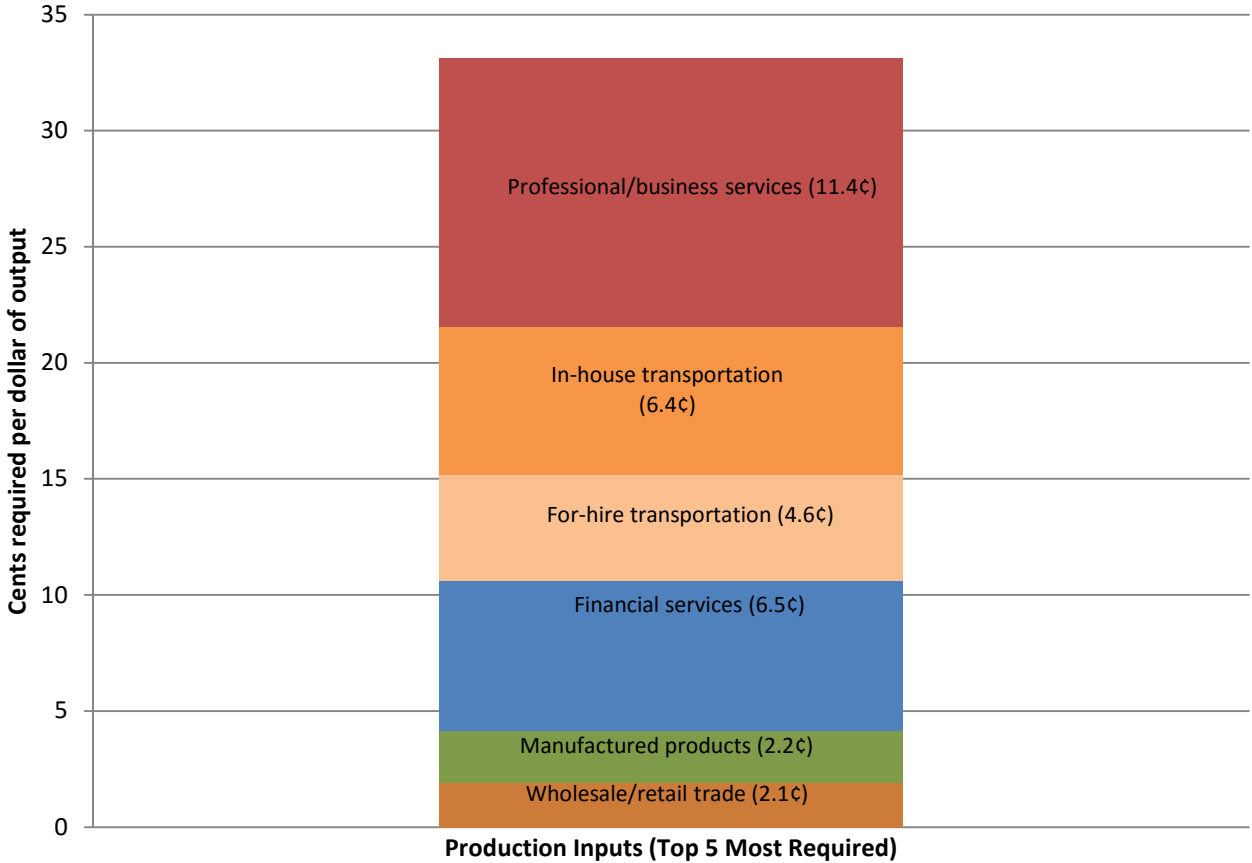
Useful in finding:

- What industries rely the most on transportation
- How important transportation is relative to other inputs

Transportation Required Per Dollar of Sector Output (2012)



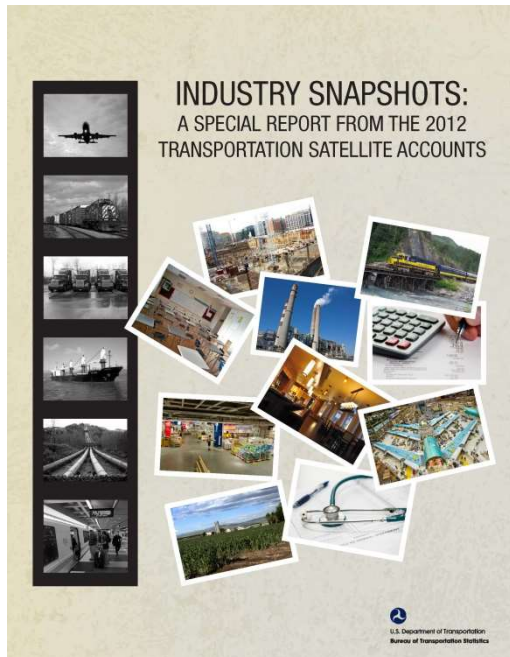
Importance of Transportation to Wholesale and Retail Trade (2012)



Data Availability

Detailed data available at:

http://www.rita.dot.gov/bts/sites/rita.dot.gov.bts/files/publications/transportation_satellite_accounts/index.html



The Industry Snapshots: A Special Report from the 2012 Transportation Satellite Accounts (forthcoming)

- Shows the use of transportation by non-transportation industries

Contact Information

Theresa Firestine, Senior Economist

U.S. Department of Transportation, Bureau of Transportation Statistics

theresa.firestine@dot.gov

202-366-3629

TSA Q&A

556967 0206A17364 061656967 0206A17364 061
3795621453F265958D4028795621453F265958D401

Behind the Numbers: Exploring Transportation Statistics
BTS Webinar Series

3795 1453F265958D4568795 1453F265958D45
39314580632547D6E200789314580632547D6E2007

Thank you for joining!