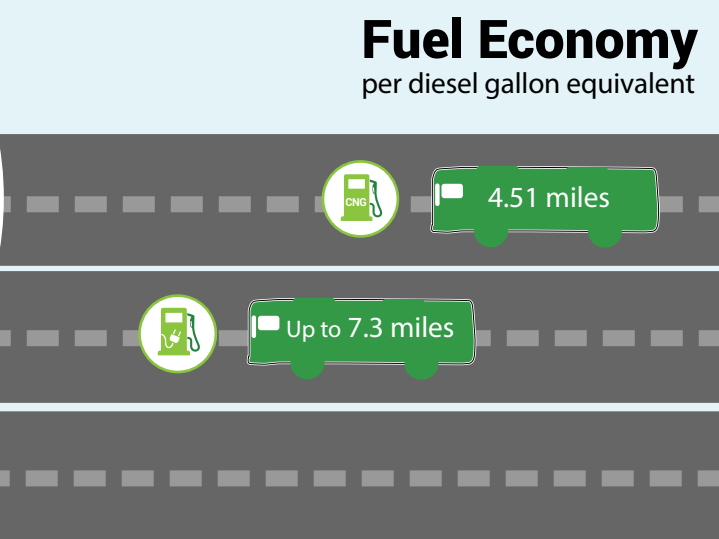
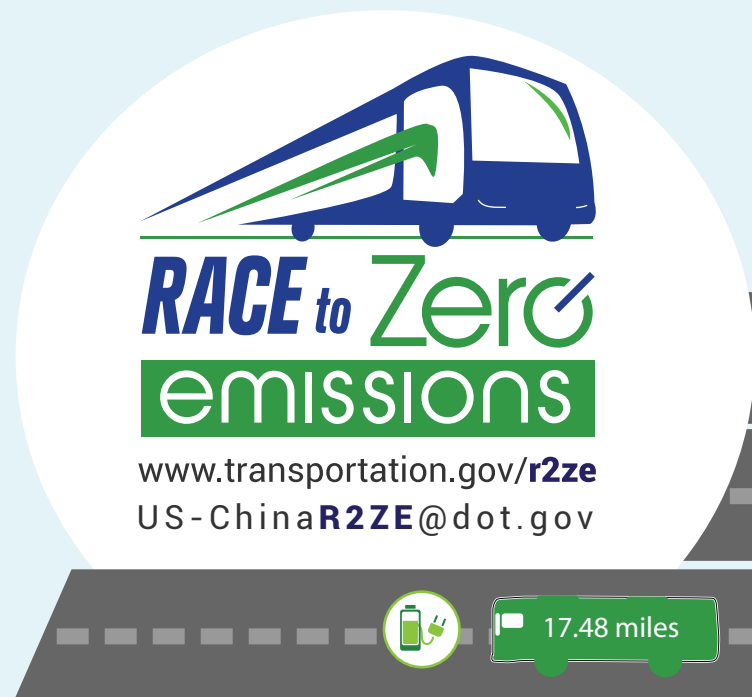
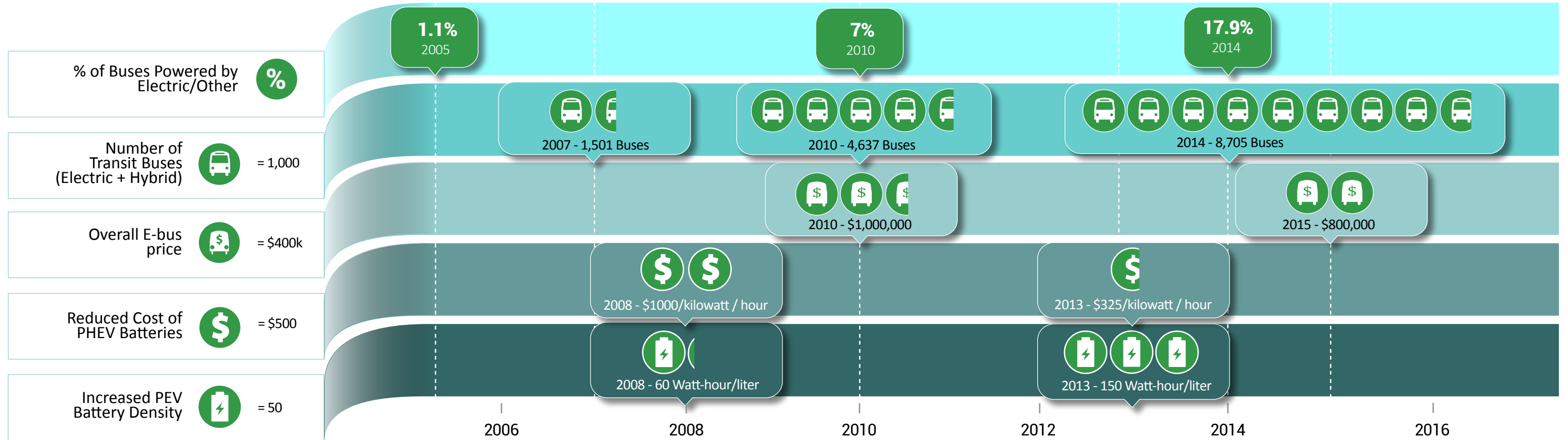


U.S. Bus Vehicle and Commuter Bus Vehicle Power Sources



	Annual Tailpipe Emissions*				Fuel and Maintenance Costs*	
	CO2 (g/mi)	NOX (g/mi)	HC (g/mi)	PM (g/mi)	Cost/Gallon	Average Cost
Diesel	2,417	2.04	0.028	0.014	\$2.63	\$9,075/yr@ \$1.00/mile
Compressed Natural Gas (CNG)	2,305	0.65	3.12	0.001	\$2.12	\$4,750/yr@ \$0.18/mile
Fuel Cell	0	0	0	0	\$4.50	\$3,250/yr@ \$0.91/mile
Electric Vehicle Bus (EV)	0	0	0	0	\$1.29	\$1,770/yr@ \$0.20/mile

*Chart compares the Zero-Mile emission rates from urban buses using diesel and compressed natural gas in California. Note: Fuel costs accurate as of July 2015.