

Channel Portfolio Tool

Module 1.5: Selecting locations

<https://cpt.usace.army.mil>

K. Ned Mitchell, PhD

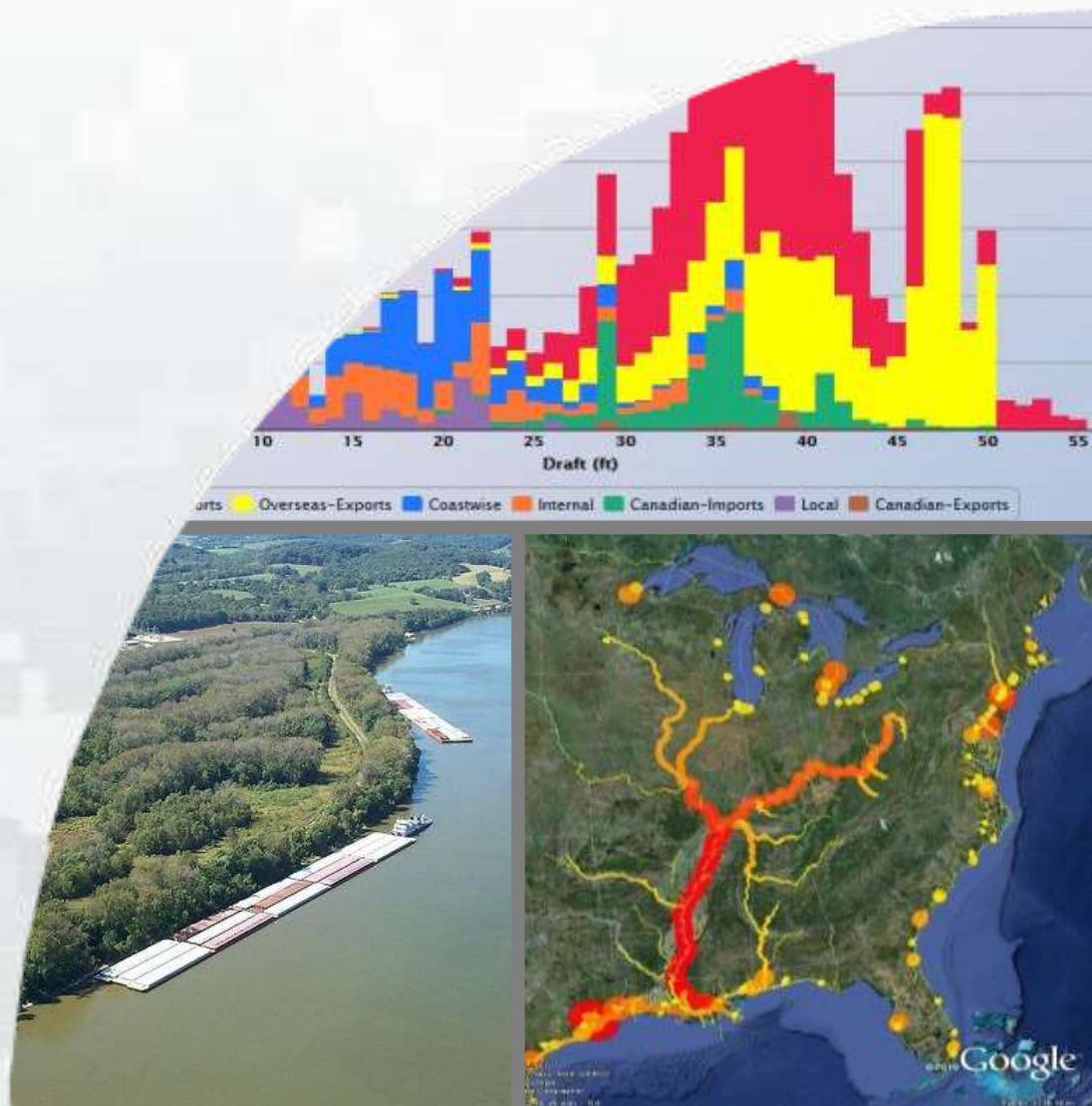
Research Civil Engineer
CPT Program Manager

Marin Kress, PhD

Research Physical Scientist

Development Team

Tim Garton - Lead Programmer;
SAM-OPJ Technical Staff



US Army Corps
of Engineers®



CPT organizational levels

Division- refers to USACE Major Subordinate Commands

District – aligned with USACE Civil Works District boundaries

Project – refers to federally authorized navigation projects.

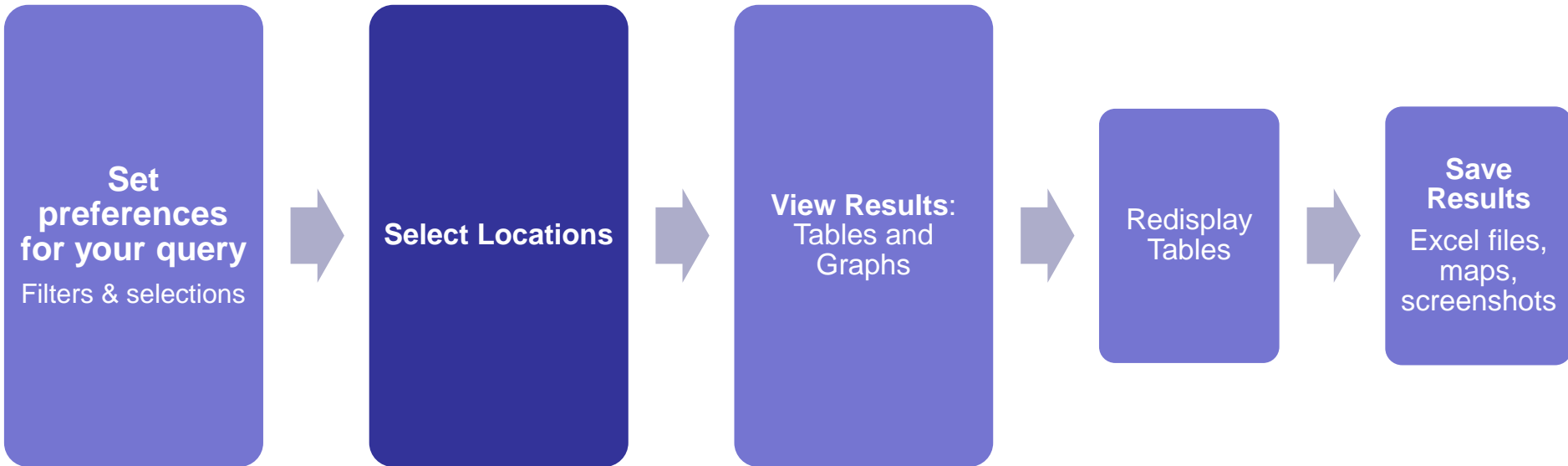
Note: a project is not the same as a port

Reach – refers to contiguous sections of the Project domain, typically an entrance channel or portion of a bay or river channel. Each reach is identified by a waterway link number.

CPT users can aggregate/disaggregate results across these spatial organization levels depending on their interest.

Generalized CPT Workflow

This module discusses the second step of the workflow, how to select locations.



Selecting locations



Channel Portfolio Tool

Welcome: Mar

Query Saver

Preferences

Locations

Reports ▾

Admin ▾

CSMART

Home

Profile

[Export Entire Custom Network KML](#)

Continue

Locations

- Lakes and Rivers
- Mississippi Valley
- North Atlantic
- Northwestern
- Pacific Ocean
- South Atlantic
- South Pacific
- Southwestern

Division level

Click on the + to expand menu

Continue



Channel Portfolio Tool

Wel

Query Saver

Preferences

Locations

Reports ▾

Admin ▾

CSMART

Home

[Export Entire Custom Network KML](#)

Continue

Locations

- Lakes and Rivers
 - Buffalo
 - Chicago
 - Detroit
 - Huntington
 - Louisville
 - Nashville
 - Pittsburgh
- Mississippi Valley
- North Atlantic
- Northwestern
- Pacific Ocean
- South Atlantic
- South Pacific
- Southwestern

District level

Click on the + to expand the menu

Continue



Channel Portfolio Tool

Welcome: Ma

- Query Saver
- Preferences
- Locations
- Reports ▾
- Admin ▾
- CSMART
- Home
- Profile

[Export Entire Custom Network KML](#)

Continue

Locations

- Lakes and Rivers
 - Buffalo
 - Chicago
 - Detroit
 - Huntington
 - Louisville
 - Green and Barren Rivers
 - Kentucky River
 - Low Use - LRL
 - Ohio River - LRL
 - Nashville
 - Pittsburgh
- Mississippi Valley
- North Atlantic
- Northwestern
- Pacific Ocean
- South Atlantic
- South Pacific
- Southwestern



Project level
Click on the + to expand menu

Continue


Continue

Locations

- Lakes and Rivers
 - Buffalo
 - Chicago
 - Detroit
 - Huntington
 - Louisville
 - Green and Barren Rivers
 - Green And Barren Rivers, Ky (Mile 000.0 To Mile 008.9) (202320)
 - Green And Barren Rivers, Ky (Mile 008.9 To Mile 009.3) - Lock & Dam 1 (5740000)
 - Green And Barren Rivers, Ky (Mile 009.3 To Mile 062.9) (202319)
 - Green And Barren Rivers, Ky (Mile 062.9 To Mile 063.2) - Lock & Dam 2 (5750000)
 - Green And Barren Rivers, Ky (Mile 063.2 To Mile 103.0) (202330)
 - Green And Barren Rivers, Ky (Mile 103.0 To Mile 108.2) (202340)
 - Green And Barren Rivers, Ky (Mile 108.2 To Mile 108.5) - Lock & Dam 3 (5760000)
 - Green And Barren Rivers, Ky (Mile 108.5 To Mile 110.2) (202317)
 - Green And Barren Rivers, Ky (Mile 110.2 To Mile 213.2) (202310)
 - Kentucky River
 - Low Use - LRL
 - Ohio River - LRL
- Nashville
- Pittsburgh
- Mississippi Valley
- North Atlantic
- Northwestern
- Pacific Ocean
- South Atlantic
- South Pacific
- Southwestern

CPT allows you to customize the combination of reaches for your query.

Selecting the checkbox at the Project level will automatically select all the reaches within that project.



All reaches within the *Green and Barren Rivers* project are displayed

Export Entire Custom Network KML

Continue

Locations

- Lakes and Rivers
- Mississippi Valley
- North Atlantic
- Northwestern
- Pacific Ocean
- South Atlantic*
- South Pacific
- Southwestern

Continue

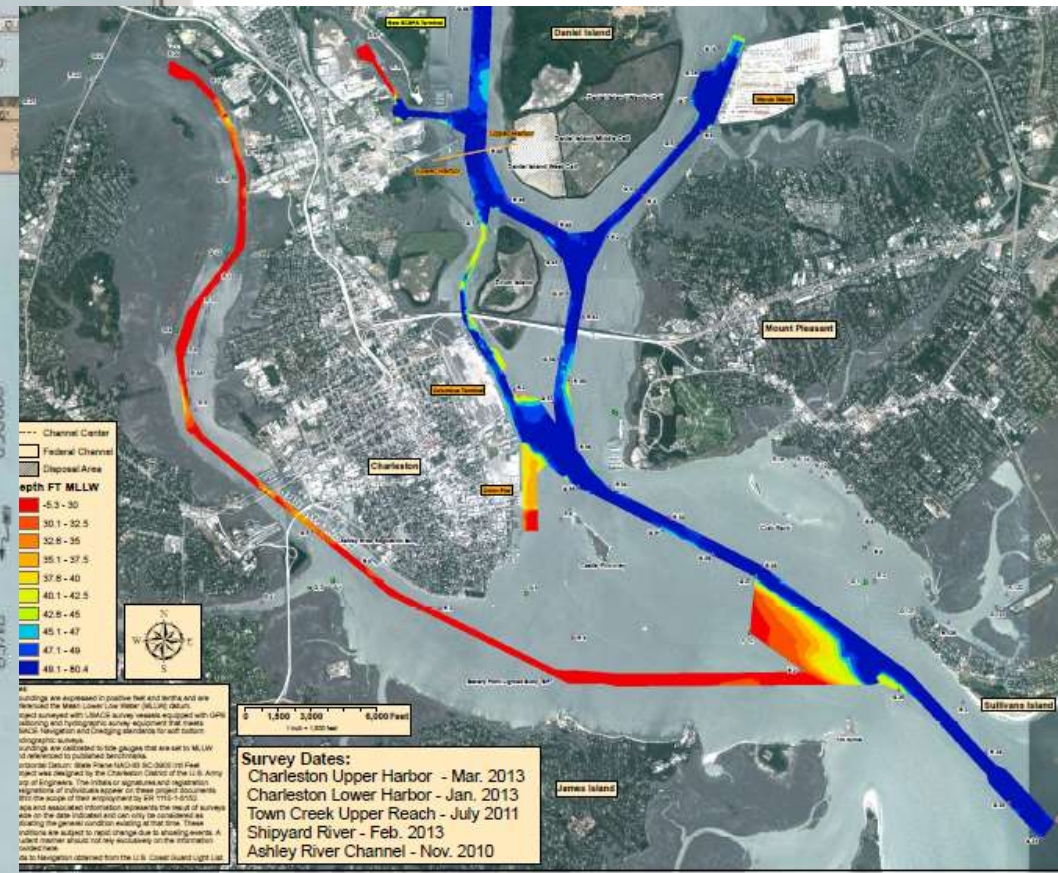
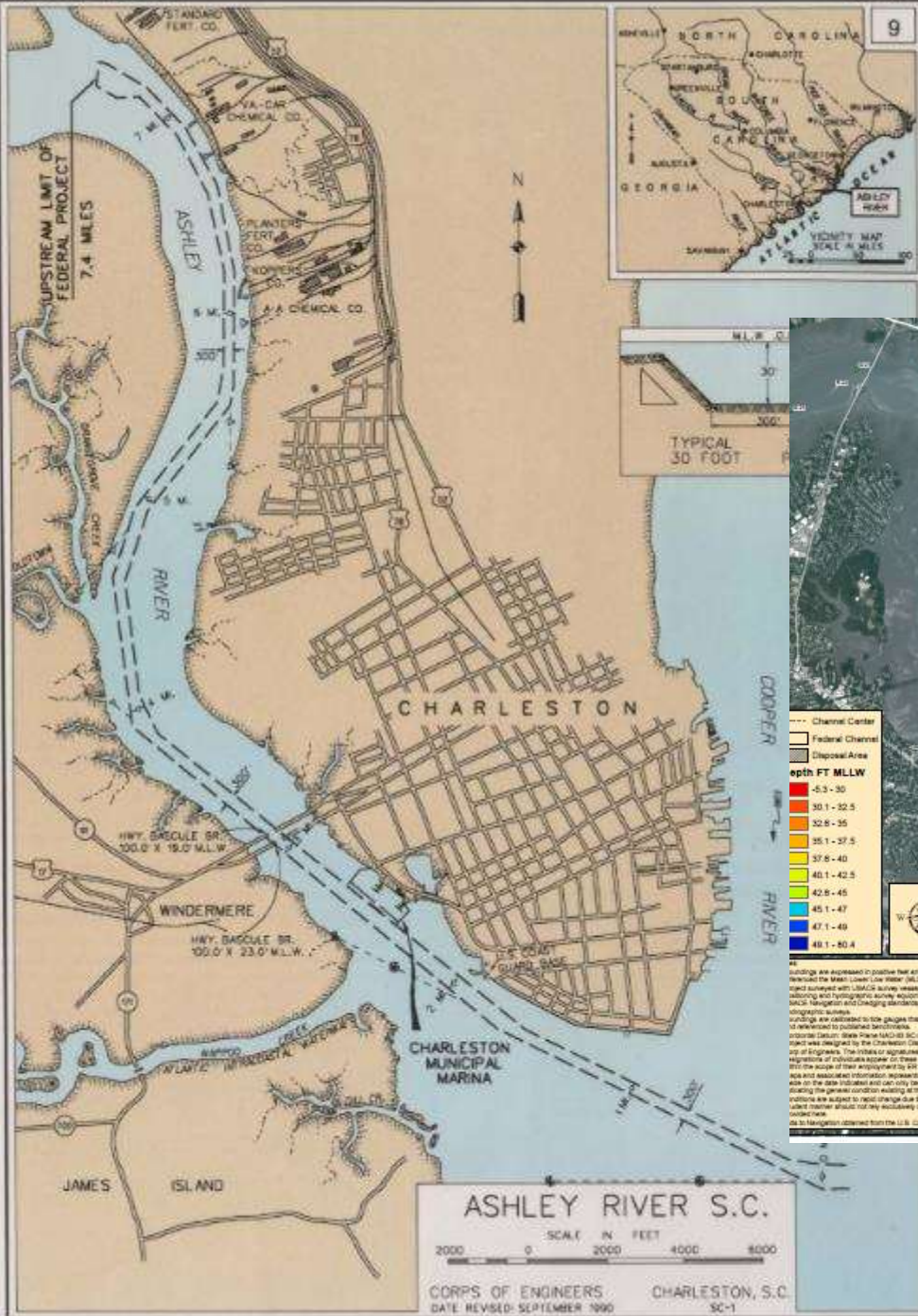
What does this asterisk mean?

Something is still selected from a previous query.

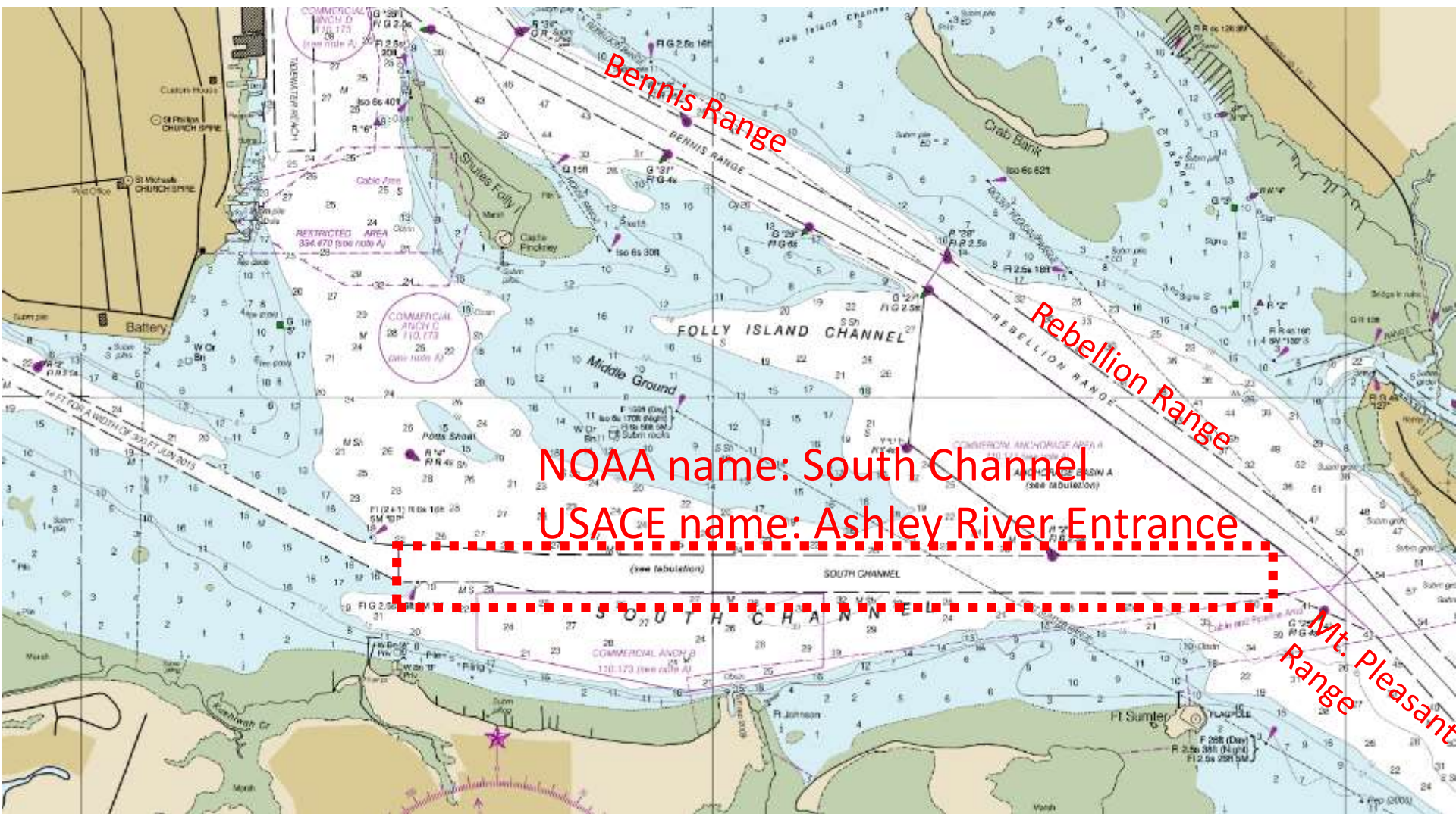
You must unselect it or it will be included in the current query.

Location selection
cautions

Reach naming and delineation may vary based on source, or may have shifted over time because of operational practices.



These images show the Ashley River area of Charleston Harbor, and the Ashley River Entrance Channel.



NOAA produces authoritative nautical charts (example above) which may have a different naming and delineation scheme than USACE reach records.

Authoritative source for Reach Names: National Waterway Network
<http://www.navigationdatacenter.us/data/datanwn.htm>

South Atlantic

Charleston

AIWW - SAC

Ashley River

Beresford Creek, SC

Charleston Harbor

Ashley River, SC - Entrance (491300)

Charleston Harbor, SC - Entrance (492100)

Cooper River, SC (Mile 00.0 To Mile 01.8)- Mt. Pleasant Range (490300)

Cooper River, SC (Mile 01.8 To Mile 02.2) - Rebellion Reach (490301)

Cooper River, SC (Mile 02.2 To Mile 03.3) - Rebellion Reach (490400)

Cooper River, SC (Mile 03.3 To Mile 04.8) - Bennis Reach (490401)

Cooper River, SC (Mile 04.8 To Mile 05.2) - Horse Reach (490402)

Cooper River, SC (Mile 05.2 To Mile 07.0) - Hog Island Reach (490700)

Cooper River, SC (Mile 07.2 To Mile 08.0) - Drum Island Reach (490900)

Cooper River, SC (Mile 08.0 To Mile 08.5) - Myers Bend (490901)

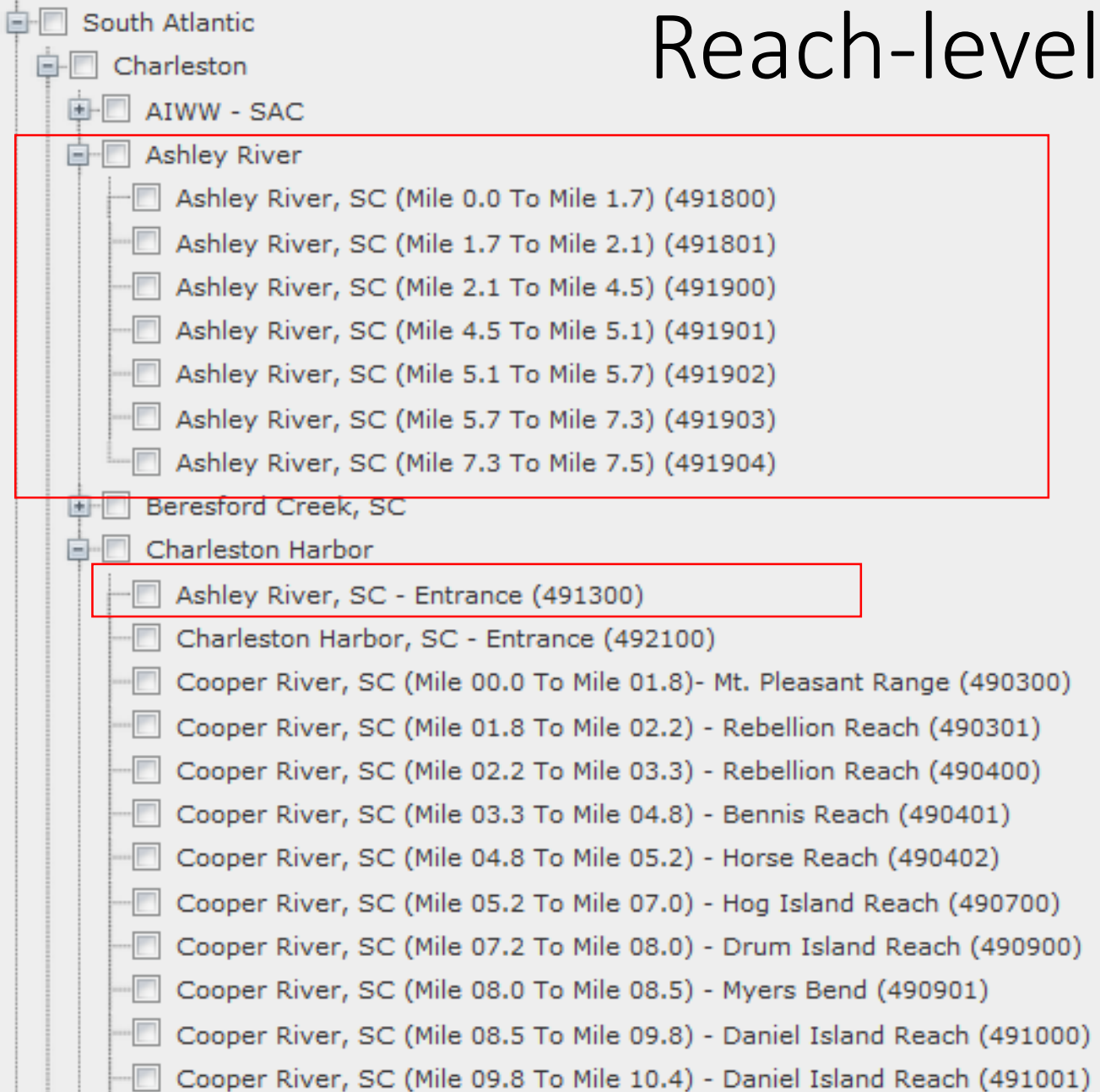
Cooper River, SC (Mile 08.5 To Mile 09.8) - Daniel Island Reach (491000)

Cooper River, SC (Mile 09.8 To Mile 10.4) - Daniel Island Reach (491001)

When selecting locations for the first time, take time to look across other projects to ensure that you select the proper reaches for your query.

This example shows that although **Ashley River** is a separate project, one Ashley River reach (491300) is included under the **Charleston Harbor** project.

Reach-level selection



When selecting individual reaches for analysis be sure you capture the correct set of channels.

There are some legacy naming quirks that might trip you up!

If you find projects or reaches that should be re-organized please take a screenshot and email the correct info to:
cpt@usace.army.mil

Summary

- The power of CPT is its ability to select any arbitrary grouping of reaches or projects and provide detailed historical data about commercial traffic in those areas.
- Users should take their time to make sure the locations selected in the query

Please view the other CPT instructional modules to learn how to run a query, view results, export to Excel, export to GoogleEarth and more.

Questions? Email: Marin.M.Kress@usace.army.mil