

Coastal Modeling System

Advanced Topics



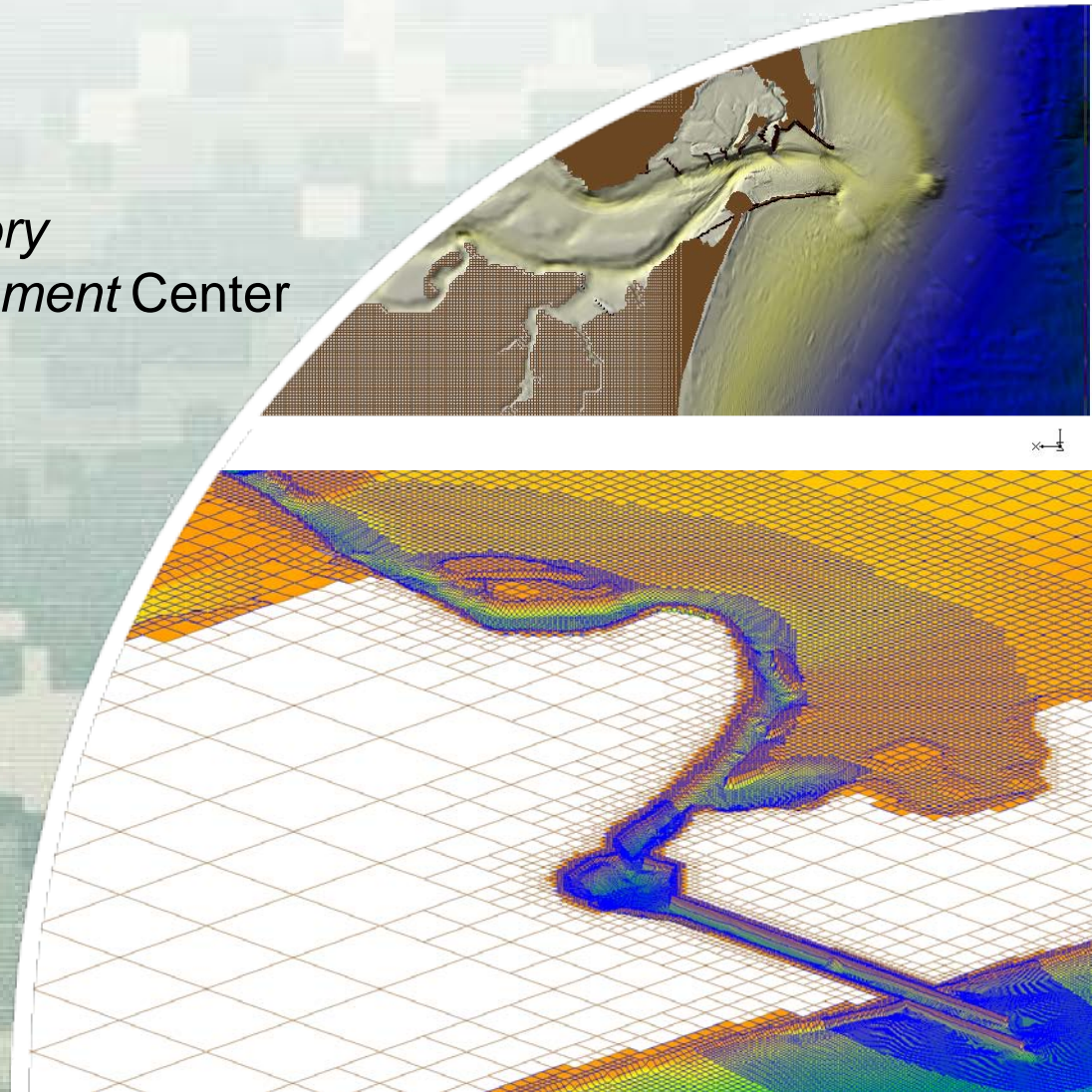
Alex Sánchez

Research Hydraulic Engineer

Coastal and Hydraulics Laboratory

Engineer Research and Development Center

June 21, 2012



®

US Army Corps of Engineers
BUILDING STRONG®

- **18 June 2012 - Day 1**

- Introduction to CMS (slides)
- Overview of Documentation and Workshop Material – Read it!
- Tips for preparing bathymetry and other scattersets
- Tips for setting up and running
- Hydrodynamics

- **19 June 2012 - Day 2**

- Wind and Atmospheric Pressure
- Initial and Boundary Conditions

- **20 June 2012 – Day 3**

- Surface roller
- Salinity Transport
- Sediment Transport

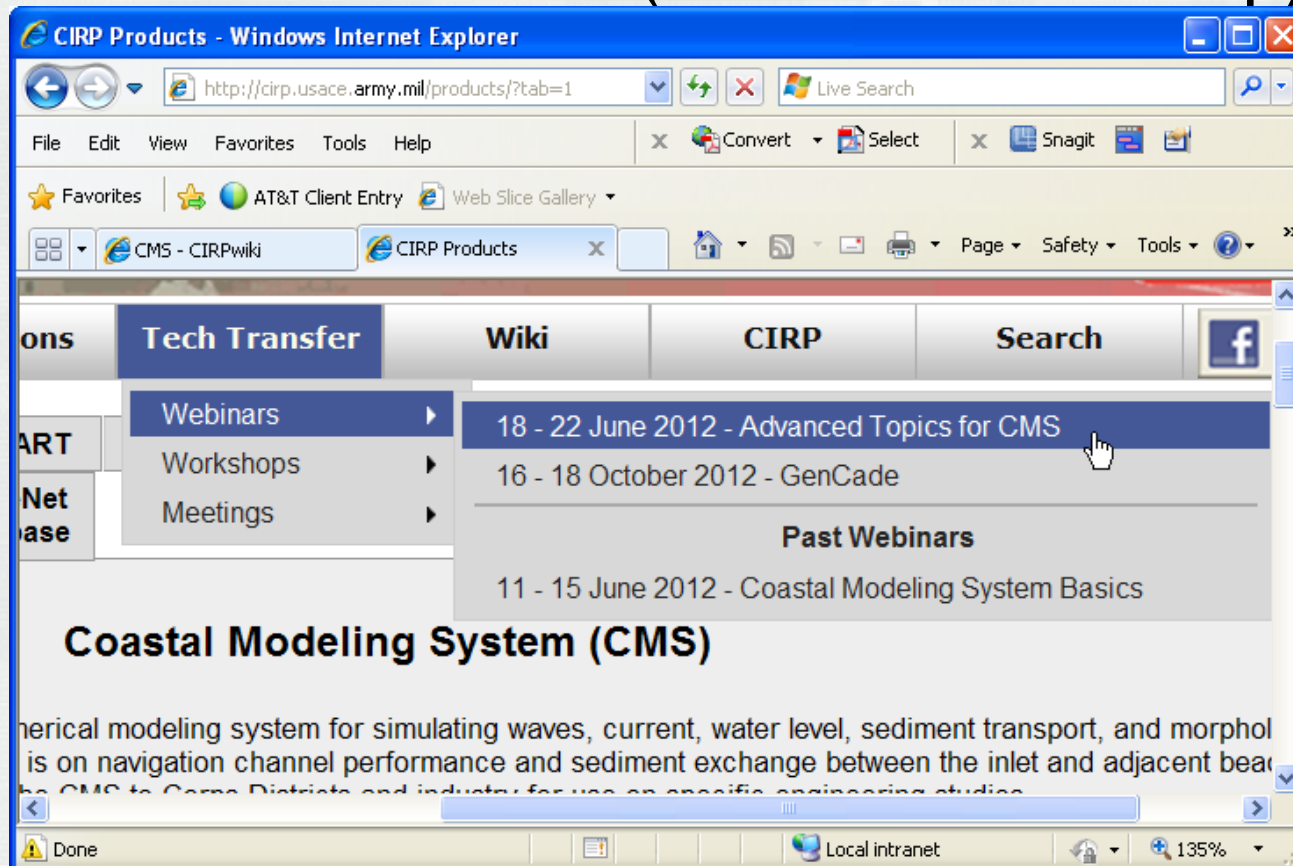
- **21 June 2012 - Day 4**

- Multiple-sized sed. transp.
- Numerical Methods
- Advanced Output

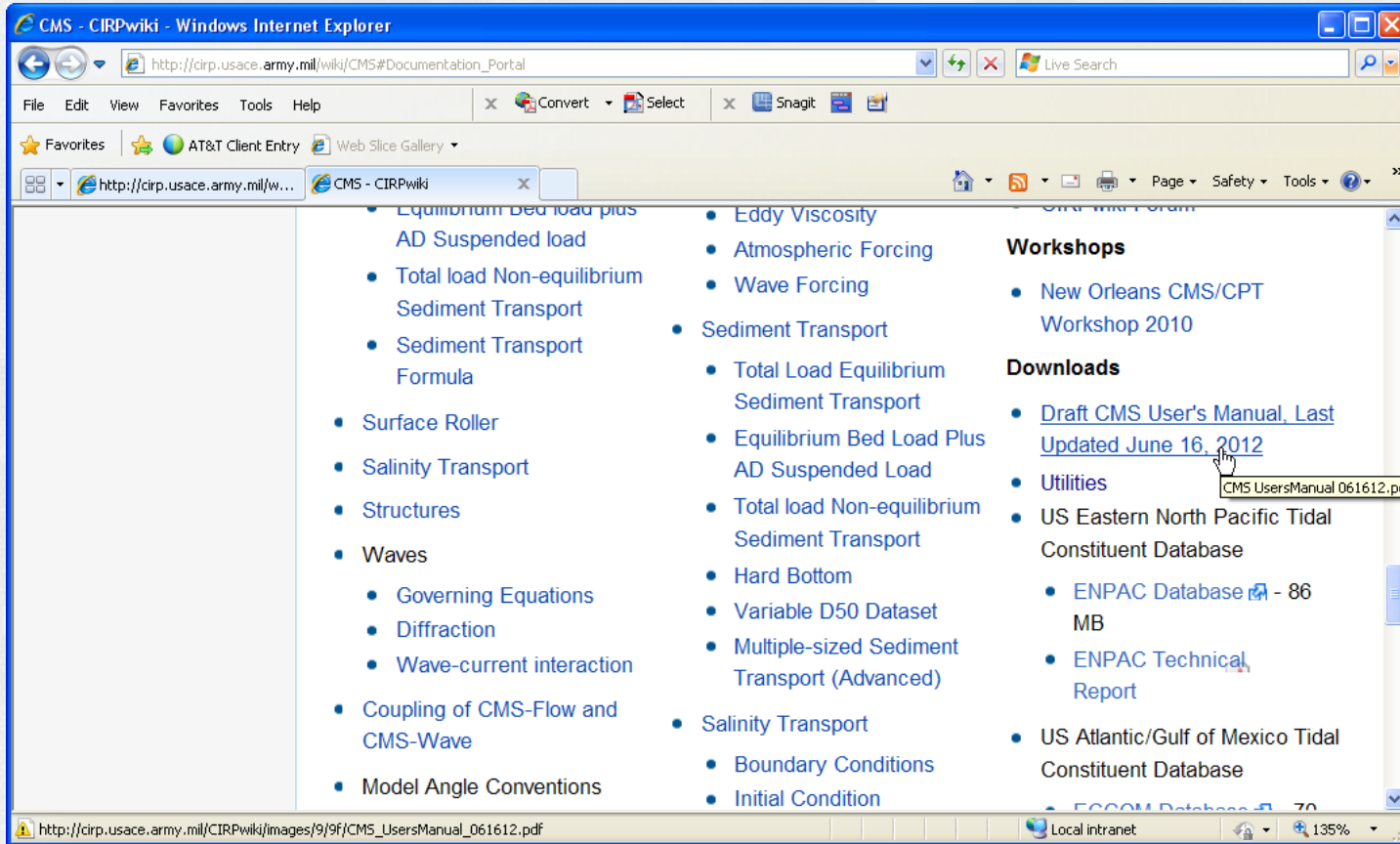
- **22 June 2012 - Day 5**

- Scripting
- Problem Solving
- Model Calibration
- Post-processing
- Upcoming features

- CMS-Flow data folder (same as workshop)



Draft CMS User Manual



<http://cirpwiki.info/wiki/CMS>