

# Coastal Modeling System

## *Advanced Topics*



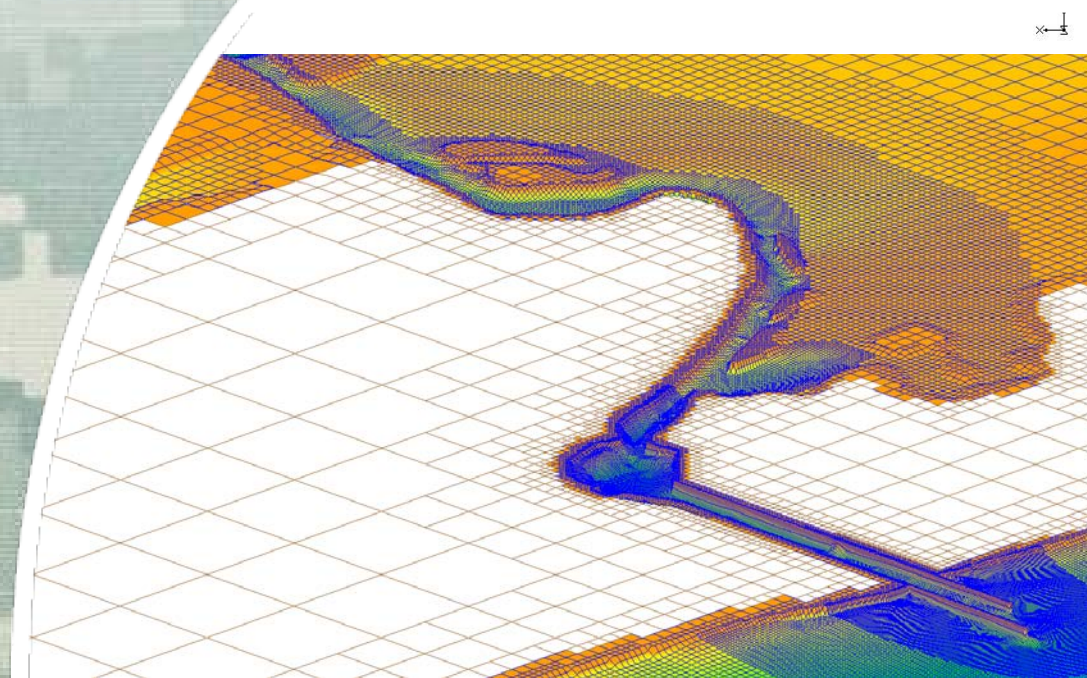
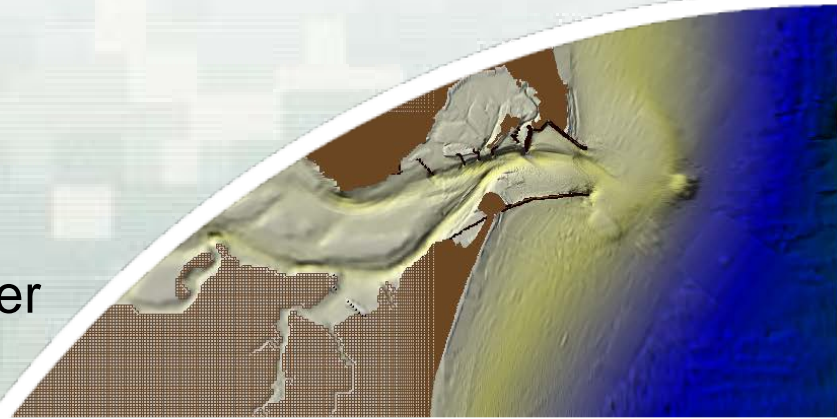
**Alex Sánchez**

*Research Hydraulic Engineer*

*Coastal and Hydraulics Laboratory*

*Engineer Research and Development Center*

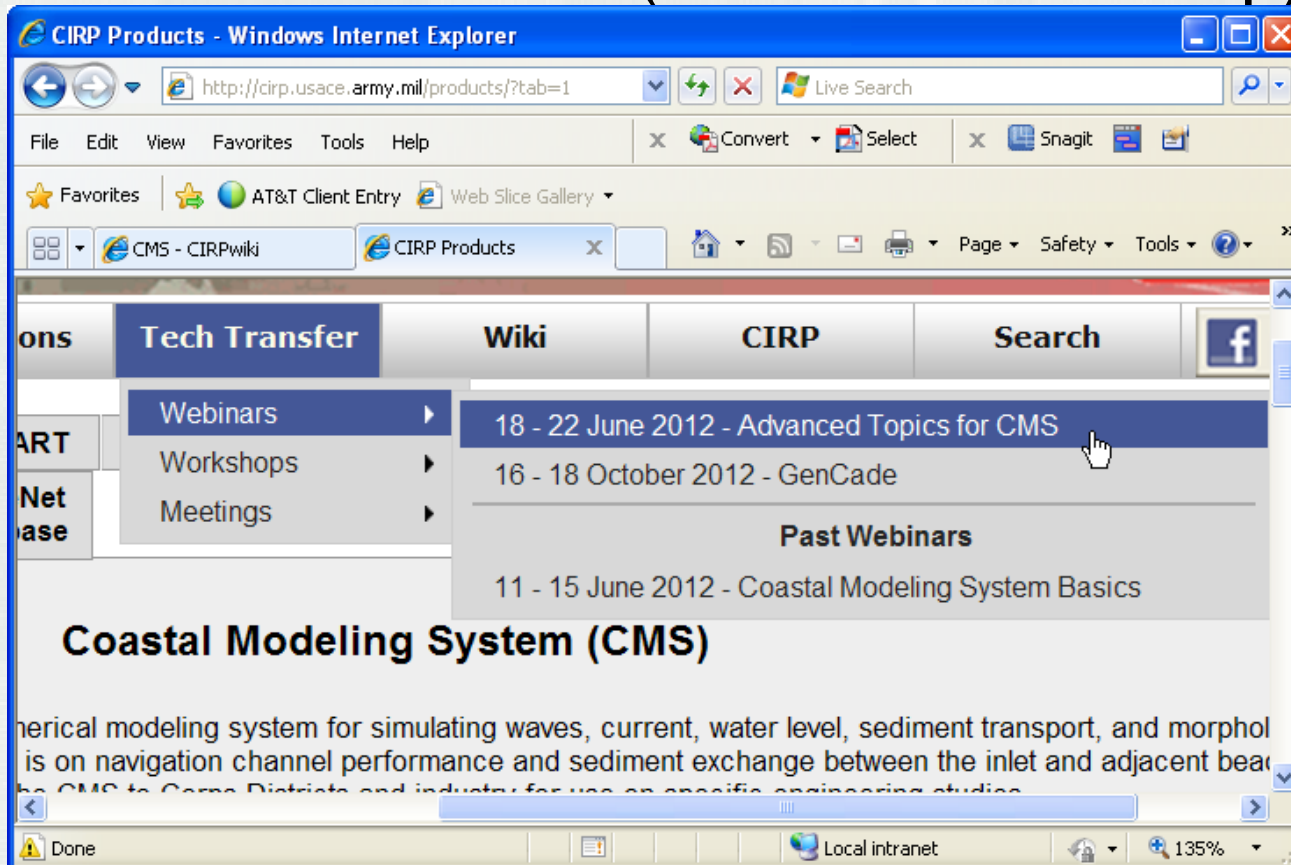
June 20, 2012



**US Army Corps of Engineers**  
**BUILDING STRONG**

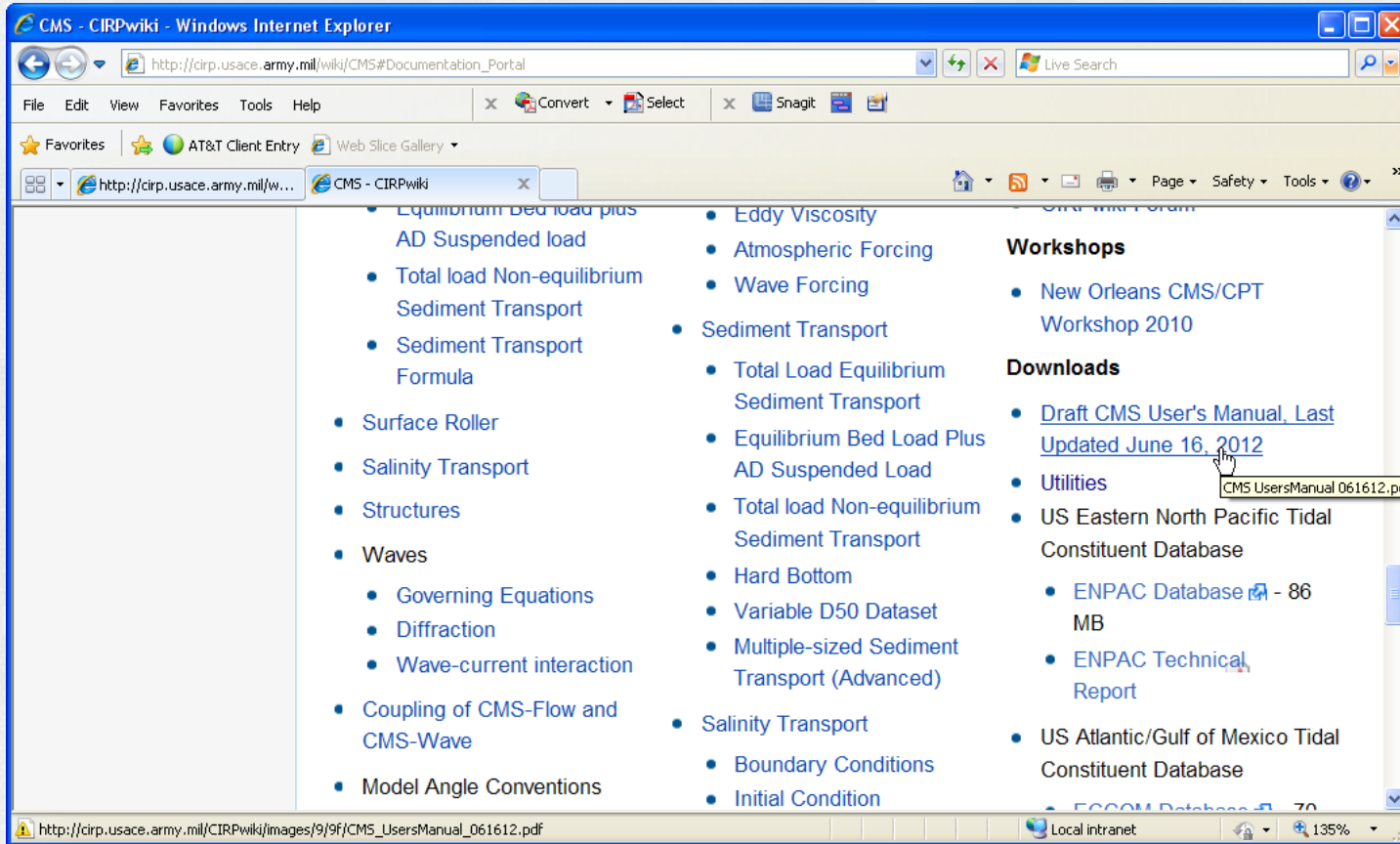
- **18 June 2012 - Day 1**
  - Introduction to CMS (slides)
  - Overview of Documentation and Workshop Material – Read it!
  - Tips for preparing bathymetry and other scattersets
  - Tips for setting up and running
  - Hydrodynamics
- **19 June 2012 - Day 2**
  - Wind and Atmospheric Pressure
  - Initial and Boundary Conditions
- **20 June 2012 – Day 3**
  - Surface roller
  - Salinity Transport
  - Sediment Transport
- **21 June 2012 - Day 4**
  - Numerical Methods
  - Advanced Output
  - Scripting
- **22 June 2012 - Day 5**
  - Problem Solving
  - Model Calibration
  - Post-processing
  - Upcoming features

- CMS-Flow data folder (same as workshop)





# Draft CMS User Manual



<http://cirpwiki.info/wiki/CMS>