

# Welcome to the 1<sup>st</sup> CMS Webinar!

## Coastal Modeling System Basics



**Mitchell E. Brown**

Co-PI, Program Management work unit

**Julie Dean Rosati**

Program Manager

**Jim Walker**

HQ Navigation Business Line Manager

**Jeff Lillycrop**

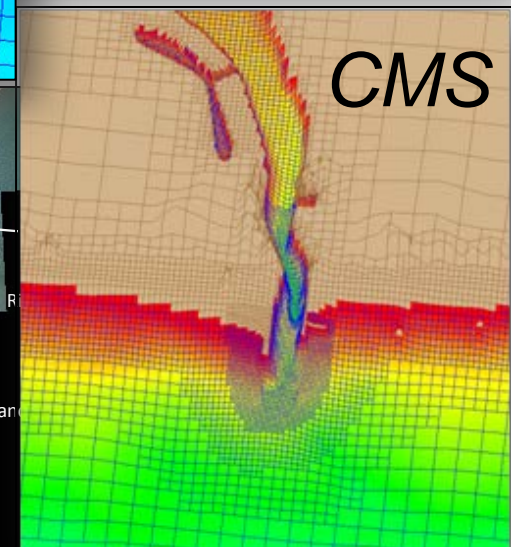
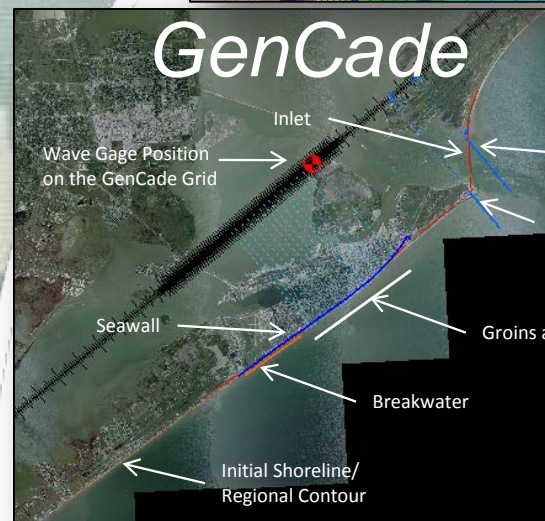
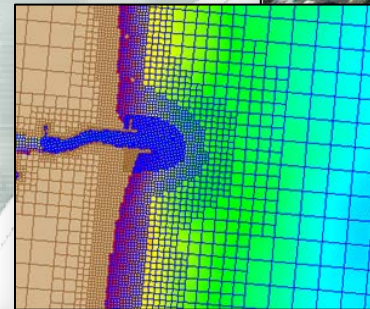
Technical Director

**Eddie Wiggins**

Associate TD



US Army Corps of Engineers  
**BUILDING STRONG**<sup>®</sup>



Webinar will be mostly presentation, demonstration and some question/answer.

- Audio available through computer speakers only.
- All attendees' microphones will be muted.
- Attendees can raise their hand and type in a question.
  - There will be 1-2 other CIRP staff to assist with answering questions during the webinar.
- Instructor may use extra time (if any) to go back over some topics.
- Instructor audio will be recorded and made available at the webpage listed below.

## 11 June 2012 - Day 1

- Introduction to SMS interface
- Introduction to the Coastal Modeling System (CMS)
- Working with Bathymetry (multiple surveys)

## 12 June 2012 - Day 2

- Conclude Working with Bathymetry (multiple surveys)
- Creating CMS-Flow grids (Variable)
- Creating CMS-Flow grids (Telescoping)

## 13 June 2012 - Day 3

- Conclude Creating CMS-Flow grids (Telescoping)
- Boundary Conditions
- Model Parameters and Model Check

## 14 June 2012 - Day 4

- Creating CMS-Wave grids (Variable only)
- Creating Wave Spectra from bulk criteria
- Importing Wave Spectra information from Wave Gauge/Buoy

## 15 June 2012 - Day 5

- Steering
- Validation (Comparison with Measurements)
- Post-processing

<b>Mitchell Brown, ERDC</b>	<a href="mailto:mitchell.e.brown@erdc.dren.mil">mitchell.e.brown@erdc.dren.mil</a>	601-634-4036
<b>Alex Sanchez, ERDC</b>	<a href="mailto:alejandro.sanchez@usace.army.mil">alejandro.sanchez@usace.army.mil</a>	601-634-2027
<b>Tanya Beck, ERDC</b>	<a href="mailto:tanya.m.beck@erdc.dren.mil">tanya.m.beck@erdc.dren.mil</a>	601-634-2603



CIRP website: <http://cirp.usace.army.mil>

CIRP wiki:

[http://cirpwiki.info/wiki/Main\\_Page](http://cirpwiki.info/wiki/Main_Page)



# Coastal Inlets Research Program

## *Brief Overview: Mission*

Reduce O&M costs at coastal navigation projects

- Develop PC tools to support O&M practice
- Transfer technology and products

### **Tools and Models:**

*CMS, CPT, CSMART,  
GenCade, Inlet Res Model,  
RMAP, Shoaling Toolbox,  
CMS pre/post processing tools*

### **Tech Transfer:**

*Webinars, Workshops, Website,  
Wiki, Mobile apps, Video clips,  
TRs, TNs, JPs*



*R&D: Berm migration, Mixed-grain sediment transport,  
Long-term morphology change, Sand sharing relationships for inlets*