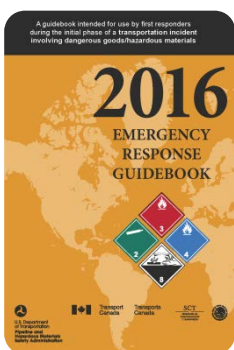


# How to use the ERG 2016 Mobile App for Android



The U.S. Department of Transportation's Pipeline and Hazardous Materials Safety Administration (PHMSA) has released a free, mobile app of its Emergency Response Guidebook 2016 (ERG). The ERG 2016 Mobile App was developed in partnership with the National Library of Medicine.

The mobile ERG will make it easier for the nation's emergency first responders to quickly locate the information they need to manage hazardous material transportation incidents. The 2016 version of the ERG includes Initial Isolation and Protective Action Distance tables for large toxic gas spills with integrated GPS mapping functions, and standard response procedures for gas and liquid pipeline incidents.

For additional information, visit our web site:

<http://phmsa.dot.gov/hazmat/outreach-training/erg>

**RESIST RUSHING IN.**

**APPROACH INCIDENT FROM UPWIND, AND UPHILL OR UPSTREAM.**

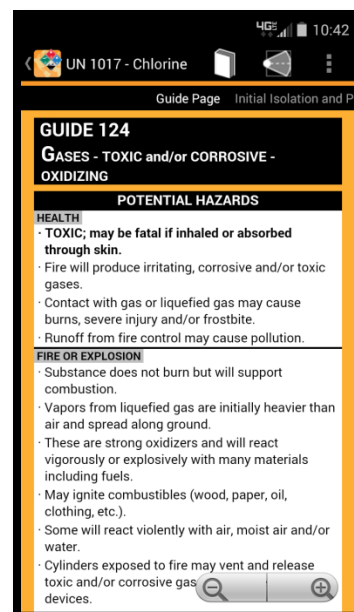
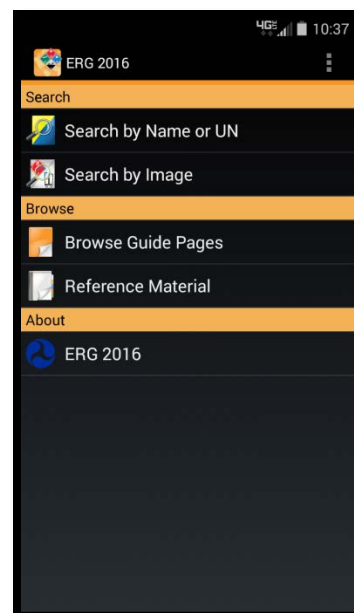
**STAY CLEAR OF ALL SPILLS, VAPORS, FUMES, SMOKE, AND POTENTIAL HAZARDS.**

## Navigation

There are four main menu options on the home screen of the ERG 2016 app. The Search functions allow you to look up hazardous materials by Proper Shipping Name or UN Identification Number, and by images of the Placard, Rail Car, or Road Trailer. Guide Pages are listed in numerical order. And Reference Material pages (white and green pages in the book) are divided into sections for hazard classification, protective distances, and safety precautions.

## Zoom

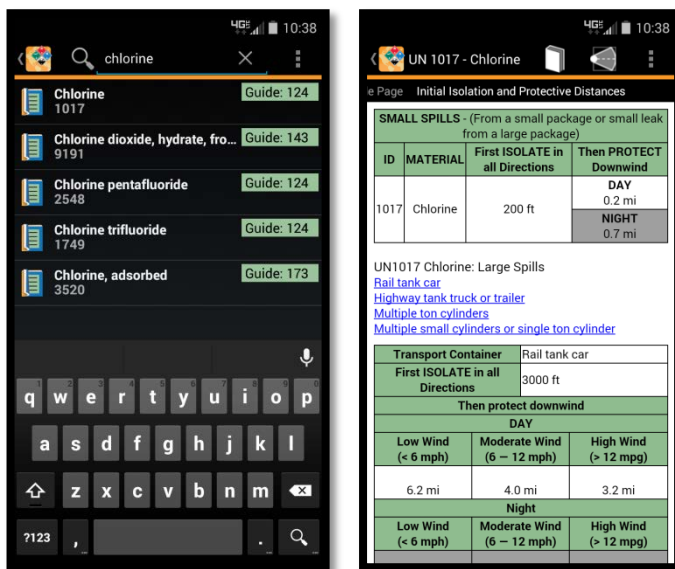
Guide Pages, Reference Material pages, and Initial Isolation and Protective Action Distance tables allow you to zoom in for better reading capability. To zoom in, spread your fingers away from each other on the screen. To zoom out, pinch your fingers together. Manual zoom buttons will also appear in the lower right corner of the screen when scrolling up or down on the page.



## Search by Name or UN

Selecting “Search by Name or UN” will display a search box at the top of the screen.

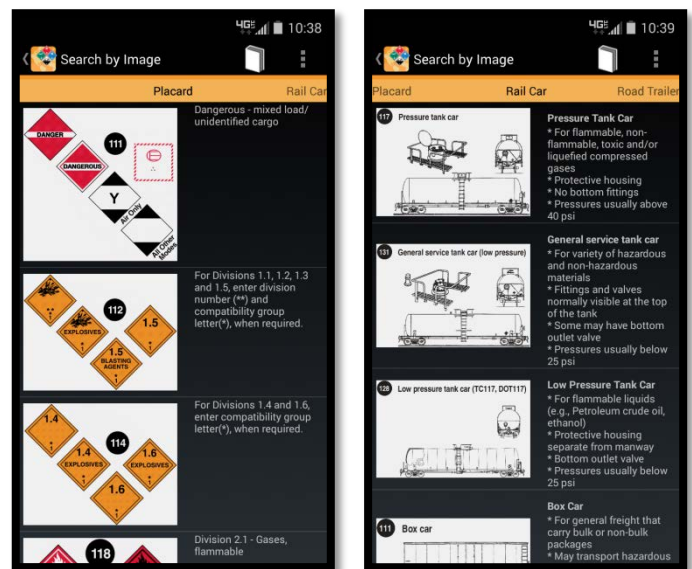
- Type the UN Identification Number or Shipping Name of the material into the search box.
- Select the correct material from the results list to view the associated Guide Page.
- **Initial Isolation and Protective Action Distance** tables (if applicable) will display on the right side of the Guide Page. Swipe to the left to view the table.



## Search by Image

Selecting “Search by Image” will display the placard groups.

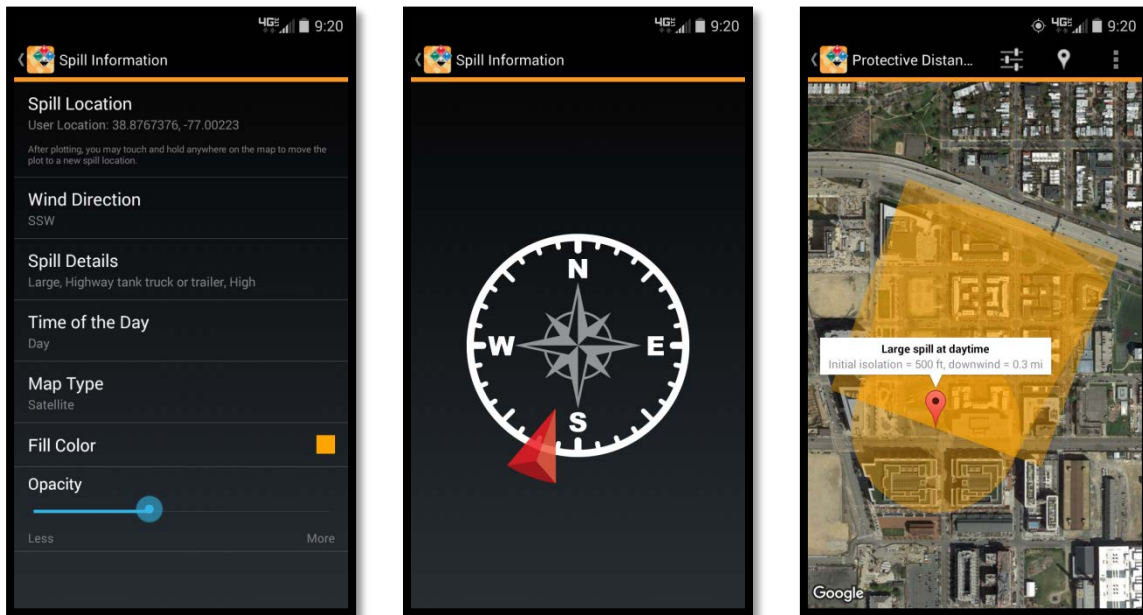
- Swipe to the left to view Rail Car images. Swipe further left to view Road Trailer images.
- Swipe up or down to view all images. Select an image for the associated Guide Page.
- These images should only be used as a **LAST RESORT** if the hazardous material cannot be identified by shipping document, numbered placard, or orange panel number.



## Protective Distance Mapping

The ERG2016 mobile app has the capability to display hazardous material spills and protective action distances in real time by using your device’s GPS location and current environment conditions. To use the mapping feature for a specified hazardous material, click on the distance cone icon at the top of the material’s Guide Page or at the top of the Initial Isolation and Protective Action Distance chart. A map and a Spill Information page will pop up, allowing you to enter the incident details and current conditions of the environment around you.

Clicking on the **Spill Location** setting will allow you to enter or select your current location to map out the spill area. Pressing the **Wind Direction** setting allows you to set the current wind direction by moving or dragging the red arrow cursor around the compass wheel into its correct position.



Use the **Spill Details** menu to identify the incident as a small or large spill, container type (rail car, highway truck, or cylinders), and wind speed (low, moderate, or high). Finally, choose the **Time of the Day** setting to select either day or night when the spill occurred.

Other map settings can be adjusted, such as the map type (normal, satellite, or hybrid view), fill color of the spill and protective distance area, and the opacity of the fill color displayed on the map. When all inputs have been selected, press the back arrow at the top left of the screen to return to the map and view your protective distance area. You can change or adjust your incident settings by clicking on the slide/bar icon at the top of the screen.

**NOTE:** Currently, electronic files, including the ERG App, cannot be substituted for hard copy documents to comply with the requirements of the Emergency Response Information requirements of Subpart G of Part 172. The intent of this regulation is to ensure that the emergency response information be provided together with the shipping paper in an accessible manner. In accordance with 49 CFR Part 107, Subpart B, a person interested in displaying emergency response information in an alternate manner may request a special permit from the Associate Administrator for Hazardous Materials Safety.

**DISCLAIMER:** ERG 2016 for Android is a software version of the 2016 Emergency Response Guidebook (ERG). It relies strictly on the information contained in the ERG, and reflects corrections for errata published as of April 26, 2016. The ERG is normally revised and reissued every four years. However, in the event of a significant mistake, omission, or change in the state of knowledge, special instructions to change the ERG may be issued. Users of the ERG and this software should check periodically to make sure their version is current. The U.S. Government does not warrant or assume any legal liability or responsibility for the accuracy and completeness of the ERG as presented by this software. The published ERG, plus any published errata, should be the final authority over this software.



U.S. Department  
of Transportation  
**Pipeline and  
Hazardous Materials  
Safety Administration**

1200 New Jersey Ave, SE  
Washington, DC 20590-0001  
E-mail: TRAINING@DOT.GOV  
Phone: 202-366-4900  
Fax: 202-366-7342