



# TRAFFIC VOLUME TRENDS

Washington, D. C.

October 1963

OCTOBER (PRELIMINARY) AND SEPTEMBER (REVISED), 1963 COMPARED TO 1962

Table 1.—Summary by Road Class and by Region

	Preliminary data for October 1963			Revised data for September 1963		
	Vehicle-miles (millions)		Percentage change	Vehicle-miles (millions)		Percentage change
	1962	1963		1962	1963	
<b>Class of road—All States:</b>						
Main rural roads.....	26,427	27,802	+5.2	27,084	27,850	+2.8
Local rural roads.....	.....	.....	+2.7	.....	.....	+2.4
All rural roads.....	.....	.....	+4.5	.....	.....	+2.7
City streets.....	.....	.....	+4.5	.....	.....	+3.7
All roads and streets.....	.....	.....	+4.5	.....	.....	+3.1
<b>By region, 48 States (main rural only):</b>						
Eastern region.....	9,730	10,188	+4.7	10,064	10,354	+2.9
Central region.....	12,624	13,305	+5.4	12,700	13,060	+2.8
Western region.....	3,985	4,218	+5.8	4,222	4,336	+2.7
<b>Total.....</b>	<b>26,339</b>	<b>27,711</b>	<b>+5.2</b>	<b>26,986</b>	<b>27,750</b>	<b>+2.8</b>

Table 2.—Changes on Main Rural Roads by States

Division and state	October (preliminary)		September (revised)		Division and state	October (preliminary)		September (revised)	
	Number of stations <sup>1</sup>	Percentage change	Number of stations <sup>1</sup>	Percentage change		Number of stations <sup>1</sup>	Percentage change	Number of stations <sup>1</sup>	Percentage change
<b>NEW ENGLAND:</b>					<b>EAST SOUTH CENTRAL:</b>				
Connecticut.....	16	+6.3	17	+1.7	Alabama.....	27	+5.2	27	+2.9
Maine.....	13	+6.5	15	+2.8	Kentucky.....	14	+3.5	13	+2.5
Massachusetts.....	8	+0.9	10	-1.8	Mississippi.....	36	+5.2	36	+1.1
New Hampshire.....	44	+9.6	50	+6.9	Tennessee.....	22	+6.1	23	+5.8
Rhode Island.....	5	+6.0	5	-2.3	<b>WEST NORTH CENTRAL:</b>				
Vermont.....	28	+7.6	30	+4.6	Iowa.....	28	+2.9	26	+0.4
<b>MIDDLE ATLANTIC:</b>					Kansas.....	70	+3.6	71	-0.1
New Jersey.....	5	+3.4	10	+1.6	Minnesota.....	29	+4.5	30	+1.7
New York.....	8	+4.5	8	-0.6	Missouri.....	21	+2.8	22	+4.1
Pennsylvania.....	.....	.....	48	+4.8	Nebraska.....	13	+5.4	13	+0.8
<b>SOUTH ATLANTIC</b>					North Dakota.....	30	+5.6	30	+3.9
(North):					South Dakota.....	28	+0.7	28	+0.7
Delaware.....	8	+4.4	9	+2.0	<b>WEST SOUTH CENTRAL:</b>				
Maryland.....	29	+7.8	31	+2.6	Arkansas.....	28	+7.1	29	+4.8
Virginia.....	.....	.....	.....	+3.8	Louisiana.....	37	+6.7	40	+2.6
West Virginia.....	25	+4.0	22	+5.6	Oklahoma.....	22	+5.6	23	+2.5
<b>SOUTH ATLANTIC</b>					Texas.....	.....	.....	.....	.....
(South):					<b>MOUNTAIN:</b>				
Florida.....	.....	.....	54	+1.3	Arizona.....	11	+4.0	13	+3.0
Georgia.....	25	+4.9	23	+4.0	Colorado.....	.....	.....	20	+6.9
North Carolina.....	39	+6.1	42	+4.4	Idaho.....	20	+3.3	19	-2.2
South Carolina.....	7	+3.7	7	+3.6	Montana.....	20	+1.6	.....	.....
<b>EAST NORTH CENTRAL:</b>					Nevada.....	21	+7.6	22	+9.1
Illinois.....	.....	.....	.....	.....	New Mexico.....	.....	+3.0	.....	+8.8
Indiana.....	22	+6.1	23	+4.7	Utah.....	37	+3.7	39	+0.3
Michigan.....	38	+6.4	37	+1.5	Wyoming.....	22	+6.2	26	+3.6
Ohio.....	.....	.....	.....	+2.1	<b>PACIFIC:</b>				
Wisconsin.....	35	+5.8	34	+2.1	California.....	.....	.....	.....	+4.1
Alaska.....	6	+0.4	5	+0.9	Oregon.....	84	+7.4	83	+1.4
Hawaii.....	.....	.....	.....	.....	Washington.....	10	-1.8	10	-8.6

<sup>1</sup>Rural mileage of each major toll route is considered as one station. Where the number of stations is not shown, the States prepared traffic estimates, generally based on extensive traffic sampling surveys.

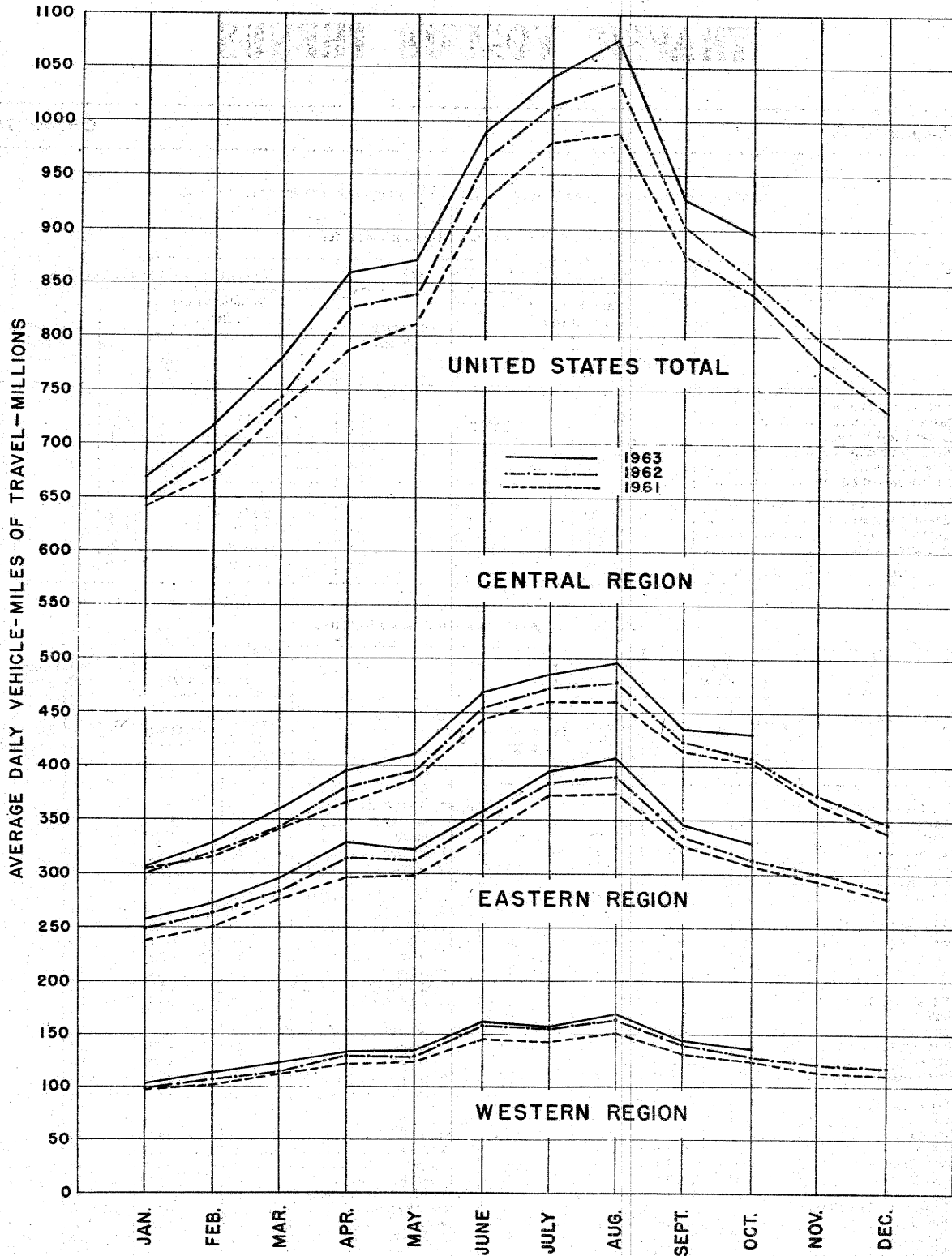


FIGURE 1—TRAVEL ON MAIN RURAL ROADS, BY MONTHS

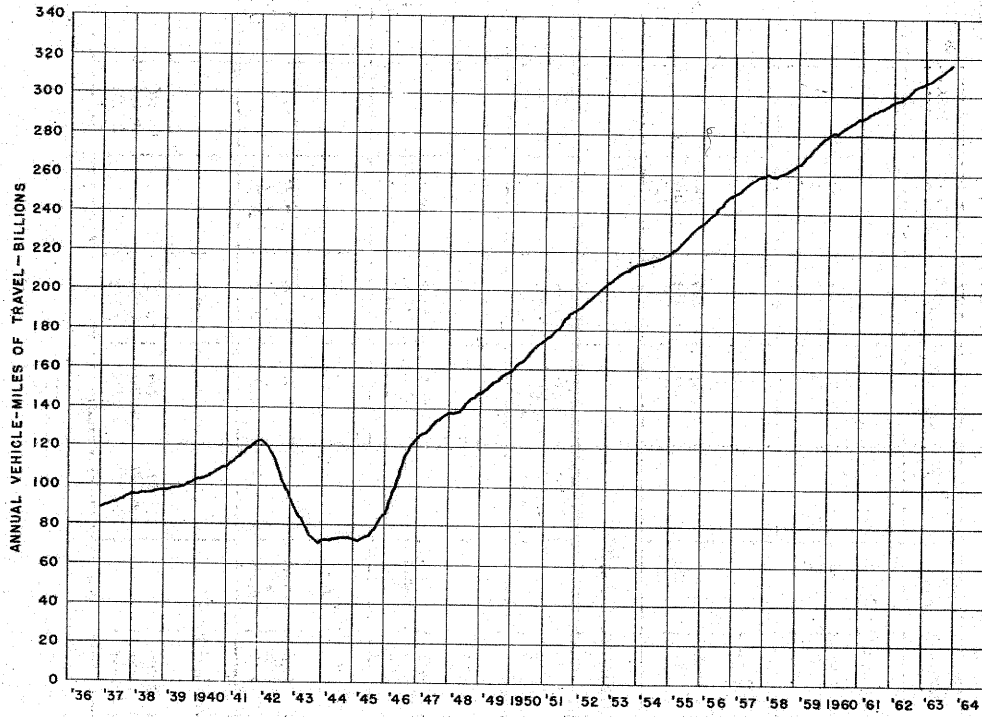


FIGURE 2—TRAVEL ON MAIN RURAL ROADS BY 12-MONTH PERIODS ENDING EACH MONTH, IN VEHICLE-MILES

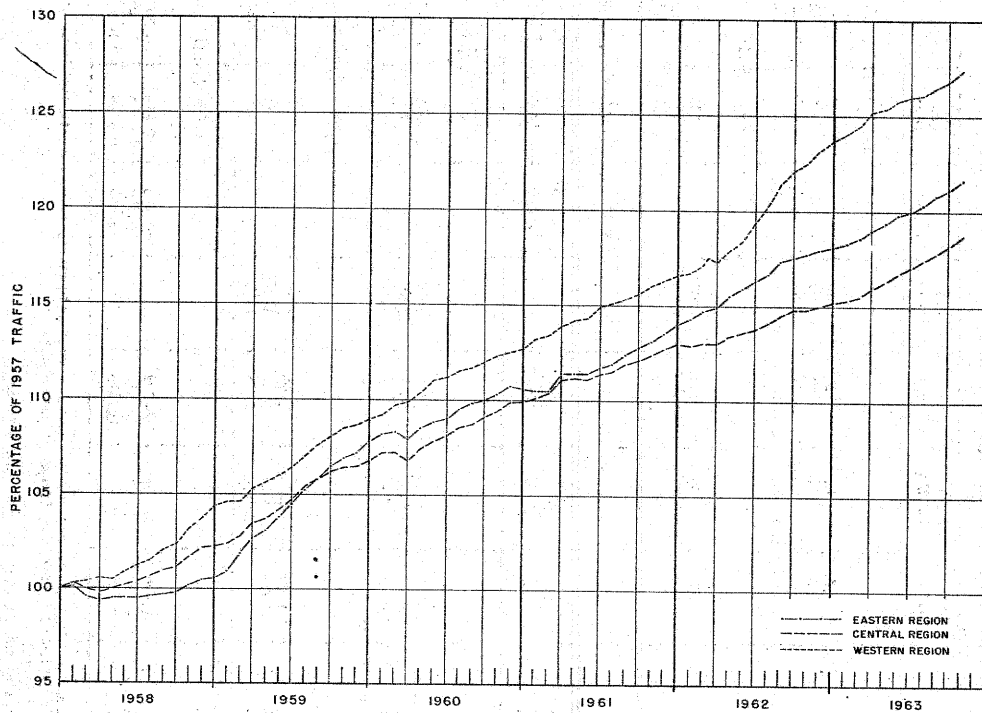


FIGURE 3 — TRAVEL ON MAIN RURAL ROADS BY 12-MONTH PERIODS ENDING EACH MONTH, AS A PERCENTAGE OF TRAFFIC IN THE CALENDAR YEAR 1957

