

PUBLIC ROADS ADMINISTRATION
FEDERAL WORKS AGENCY

INFORMATIONAL MEMORANDUM

DATE: OCTOBER 31, 1945

SUBJECT: TRAFFIC VOLUME TRENDS

In September large traffic increases were found on all main highways compared to September 1944. In the two western regions the increases were particularly large and traffic exceeded that of any previous September. The largest 1945 increases were found on the highways of California, Nevada, and Oregon where traffic in the past month was approximately 10 percent above that of the corresponding month of 1941 and more than 65 percent above the 1944 figures.

Increases in September traffic on local roads, although smaller than those on main highways, were found at all points except two in North Dakota and one in Ohio.

Traffic on all rural roads in the two western regions was 7.9 percent above corresponding 1941 counts while that in the four central regions was 19.3 percent below, and that in the three eastern regions 17.2 percent below the 1941 figures. For the United States as a whole, the traffic was 36.7 percent above the 1944 level but still 14.0 percent below that of 1941.

Comparisons of city traffic in September 1945 with corresponding traffic in September 1944 are as follows:

6 stations in Chicago, Illinois +19.8 percent
3 stations in Detroit, Michigan + 4.8 percent
1 station in Santa Fe, New Mexico +20.7 percent

H. S. FAIRBANK, DEPUTY COMMISSIONER,
PUBLIC ROADS ADMINISTRATION

Attachments

[The page contains extremely faint, illegible text, likely bleed-through from the reverse side of the paper. The text is arranged in several paragraphs across the page.]

TABLE 1.--PRELIMINARY SUMMARY OF AUTOMATIC TRAFFIC RECORDER DATA FOR SEPTEMBER 1945 INCLUDING 573 STATIONS IN 43 STATES¹

Type of highway and State	Number of stations	Percentage change from Sept. 1944	Type of highway and State	Number of stations	Percentage change from Sept. 1944
<i>STATE HIGHWAYS</i>			<i>STATE HIGHWAYS (Continued)</i>		
Alabama	7	+19.4	Utah	9	+30.8
Arizona	5	+41.4	Vermont	7	+57.5
Arkansas	21	+43.1	Virginia	3	+37.6
California	7	+67.7	Washington	10	+48.8
Colorado	3	+39.9	West Virginia	10	+35.3
Connecticut	17	+54.5	Wisconsin	9	+39.9
Delaware	6	+26.2	Wyoming	4	+43.2
Florida	18	+35.7			
Georgia	7	+35.3	<i>TOTAL - 43 STATES</i>	542	+42.9
Idaho	7	+34.1	<i>LOCAL HIGHWAYS</i>		
Illinois	4	+18.2	Alabama	2	+12.2
Iowa	26	+36.5	Connecticut	3	+33.1
Kansas	12	+16.2	Delaware	2	+12.9
Kentucky	11	+39.6	Georgia	4	+ 8.8
Maine	10	+45.6	Iowa	9	+11.7
Massachusetts	9	+37.9	Michigan	2	+30.3
Michigan	26	+26.0	Missouri	1	+23.1
Mississippi	10	+28.2	Montana	2	+11.0
Missouri	22	+41.2	North Dakota	2	+ 0.7
Montana	12	+39.9	Ohio	1	0.0
Nebraska	11	+38.7	Oregon	1	+13.3
Nevada	16	+72.7	Rhode Island	1	+ 6.6
New Hampshire	15	+63.4	Wisconsin	1	+39.7
New Mexico	12	+48.7			
New York	2	+56.4	<i>TOTAL - 13 STATES</i>	31	+21.4
North Carolina	20	+35.0	<i>ALL HIGHWAYS</i>		
North Dakota	8	+51.4	<i>43 STATES</i>	573	+36.7
Ohio	18	+32.2	<i>3 EASTERN REGIONS</i>	169	+37.2
Oklahoma	20	+30.8	<i>4 CENTRAL REGIONS</i>	312	+30.5
Oregon	4	+79.5	<i>2 WESTERN REGIONS</i>	92	+54.3
Pennsylvania	29	+36.4			
Rhode Island	3	+24.9			
South Carolina	3	+18.0			
South Dakota	10	+36.1			
Tennessee	7	+44.3			
Texas	72	+23.2			

¹Includes all States except Indiana, Louisiana, Maryland, Minnesota, and New Jersey.

MEMORANDUM FOR THE RECORD

DATE	DESCRIPTION	AMOUNT	CHECK NO.
10/15/54
10/20/54
10/25/54
11/05/54
11/10/54
11/15/54
11/20/54
11/25/54
12/05/54
12/10/54
12/15/54
12/20/54
12/25/54
1/05/55
1/10/55
1/15/55
1/20/55
1/25/55
2/05/55
2/10/55
2/15/55
2/20/55
2/25/55
3/05/55
3/10/55
3/15/55
3/20/55
3/25/55
4/05/55
4/10/55
4/15/55
4/20/55
4/25/55
5/05/55
5/10/55
5/15/55
5/20/55
5/25/55
6/05/55
6/10/55
6/15/55
6/20/55
6/25/55
7/05/55
7/10/55
7/15/55
7/20/55
7/25/55
8/05/55
8/10/55
8/15/55
8/20/55
8/25/55
9/05/55
9/10/55
9/15/55
9/20/55
9/25/55
10/05/55
10/10/55
10/15/55
10/20/55
10/25/55
11/05/55
11/10/55
11/15/55
11/20/55
11/25/55
12/05/55
12/10/55
12/15/55
12/20/55
12/25/55

...

TABLE 2.--REVISED SUMMARY OF AUTOMATIC TRAFFIC RECORDER DATA FOR AUGUST 1945 INCLUDING 624 STATIONS IN 46 STATES¹

Region and State	Number of stations	Percentage change from August 1944	Region and State	Number of stations	Percentage change from August 1944
NEW ENGLAND			EAST SOUTH CENTRAL		
Connecticut	20	+36.4	Alabama	10	+20.0
Maine	10	+34.9	Kentucky	12	+26.5
Massachusetts	9	+27.7	Mississippi	10	+22.4
New Hampshire	15	+47.5	Tennessee	6	+34.2
Rhode Island	4	+15.9	Subtotal	38	+25.0
Vermont	9	+49.0	WEST SOUTH CENTRAL		
Subtotal	67	+35.5	Arkansas ³	18	+38.0
MIDDLE ATLANTIC			Louisiana	1	-37.6
New York	5	+37.3	Oklahoma	20	+21.8
Pennsylvania	29	+25.7	Texas	72	+24.3
Subtotal	34	+28.7	Subtotal	111	+17.7
SOUTH ATLANTIC			MOUNTAIN		
Delaware	8	+16.5	Arizona	5	+31.1
Maryland	18	+18.6	Colorado	5	+44.0
Virginia	3	+27.9	Idaho	7	+20.5
West Virginia	11	+20.7	Montana	14	+14.2
Subtotal north portion	40	+19.4	Nevada	16	+45.9
Florida	18	+22.3	New Mexico	12	+32.9
Georgia	11	+19.1	Utah	10	+14.2
North Carolina	20	+27.1	Wyoming	4	+18.6
South Carolina	3	+12.7	Subtotal	73	+28.3
Subtotal south portion	52	+23.1	PACIFIC		
Subtotal region	92	+21.4	California	4	+24.8
EAST NORTH CENTRAL			Oregon	5	+60.0
Illinois	4	+25.9	Washington	10	+33.8
Indiana	22	+29.3	Subtotal	19	+36.1
Michigan	28	+27.5	TOTAL ALL STATES²	624	+26.3
Ohio	21	+24.5	STATE HIGHWAYS²	592	+29.2
Wisconsin	10	+30.4	LOCAL HIGHWAYS	32	+19.1
Subtotal	85	+27.5	3 EASTERN REGIONS	193	+26.2
WEST NORTH CENTRAL			4 CENTRAL REGIONS	339	+24.0
Iowa	34	+24.1	2 WESTERN REGIONS	92	+33.4
Kansas	14	+15.4			
Missouri	25	+27.4			
Nebraska	11	+28.0			
North Dakota	12	+26.2			
South Dakota	9	+26.3			
Subtotal	105	+24.8			

¹Combined State and local highways.

²Includes all States except Minnesota and New Jersey.

³Abnormal conditions in 1944 or 1945 affected 1 count in Arkansas, excluding station 21, the increase is 25.8 percent.



TABLE 3.--NUMBER OF VEHICLES, CLASSIFIED BY TYPES, USING TOLL FACILITIES IN SEPTEMBER 1945 COMPARED WITH THOSE IN SEPTEMBER 1944 AND 1941.

Facilities	1945			Percentage change from 1944			Percentage change from 1941		
	Total	Passenger cars	Trucks and busses	Total	Passenger cars	Trucks and busses	Total	Passenger cars	Trucks and busses
EASTERN REGIONS									
3 in the New England States	56,930	53,416	3,514	+64.6	+69.9	+11.7	-17.0	-18.3	+9.3
10 in the Middle Atlantic States	4,200,049	3,468,904	731,145	+28.3	+36.6	-0.4	-4.5	-5.0	-2.1
Pennsylvania Turnpike	201,544	172,404	29,140	+99.5	+140.6	-0.9	-21.4	-23.7	-4.3
4 in the South Atlantic States	51,539	44,988	6,551	+19.3	+24.7	-8.1	-29.4	+32.0	+14.0
TOTAL - 18 facilities ¹	4,510,062	3,739,712	770,350	+30.6	+39.6	-0.4	-5.3	-5.9	-2.0
TOTAL - 23 facilities	5,327,212	4,464,746	862,466	+28.9	+37.0	-1.2			
CENTRAL REGIONS									
2 on the Great Lakes Canadian Border	212,818	205,886	6,932	+127.0	+140.4	-14.3	+92.8	+95.8	+31.9
2 in the Great Lakes Region	140,088	120,583	19,505	+73.9	+100.1	-3.9	-9.3	-8.6	-13.5
Subtotal - 4 facilities	352,906	326,469	26,437	+102.5	+123.7	-6.8	+33.2	+37.7	-4.9
8 on the Ohio River ²	537,934	449,542	88,392	+37.7	+42.7	+16.9	-8.6	-9.6	-3.0
2 in Kentucky	20,875	15,428	5,447	+35.6	+44.2	+16.1	+38.1	+39.5	+34.2
Subtotal - 10 facilities	558,809	464,970	93,839	+37.6	+42.7	+16.8	-7.4	-8.5	-1.4
3 on the Mississippi and St. Croix Rivers St. Louis and north	1,140,697	947,302	193,395	+21.7	+28.7	-4.0	-34.4	-34.2	-35.5
3 on the Mississippi River south of St. Louis	92,162	71,497	20,665	+20.4	+28.4	-0.9	+22.7	+33.9	-4.7
Subtotal - 13 facilities	1,232,859	1,018,799	214,060	+21.6	+28.7	-3.7	-32.1	-31.8	-33.4
3 on the Missouri River	136,094	108,215	27,879	+25.9	+26.7	+23.1	+11.8	+13.2	+6.8
1 in the Missouri River area	2,900	2,498	402	+92.8	+124.6	+2.6	+1.8	+2.8	-3.8
Subtotal - 4 facilities	138,994	110,713	28,281	+26.8	+27.9	+22.8	+11.6	+12.9	+6.7
on the Mexican Border	55,106	48,812	6,294	+13.1	+27.0	-38.7			
TOTAL - 31 facilities ¹	2,283,568	1,920,951	362,617	+34.0	+42.3	+2.4	-18.7	-17.9	-23.0
TOTAL - 37 facilities	2,534,389	2,137,265	397,124	+33.4	+41.9	+1.0			
WESTERN REGIONS									
2 in California	2,525,503	2,318,319	207,184	+40.8	+45.9	+1.0	+20.4	+20.3	+21.0
4 in the Oregon-Washington area	335,604	295,648	39,956	+59.3	+66.6	+20.1	+52.2	+51.5	+58.1
TOTAL - 6 facilities	2,861,107	2,613,967	247,140	+42.6	+48.0	+3.6	+23.4	+23.2	+25.8
UNITED STATES									
TOTAL - 55 facilities ¹	9,654,737	8,274,630	1,380,107	+34.8	+42.8	+1.0	-2.4	-1.9	-5.1
TOTAL - 66 facilities	10,722,708	9,215,978	1,506,730	+33.4	+41.1	+0.2			
SUPPLEMENTAL DATA									
3 facilities reporting only total traffic	147,238			-4.3					

¹These facilities have comparative data for 1945, 1944, and 1941 and are included in the larger total below.

²Four of these facilities are between Ohio and West Virginia.

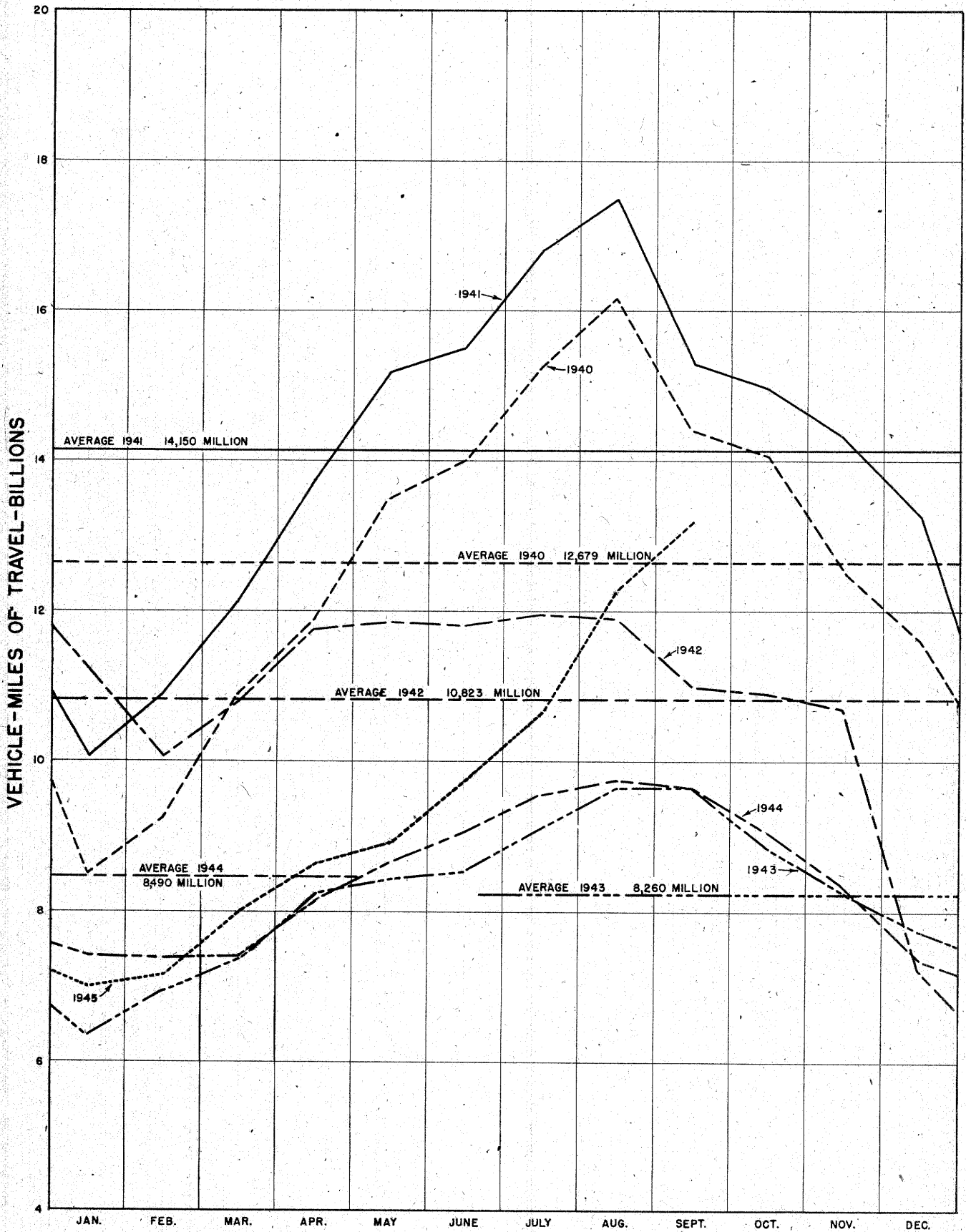
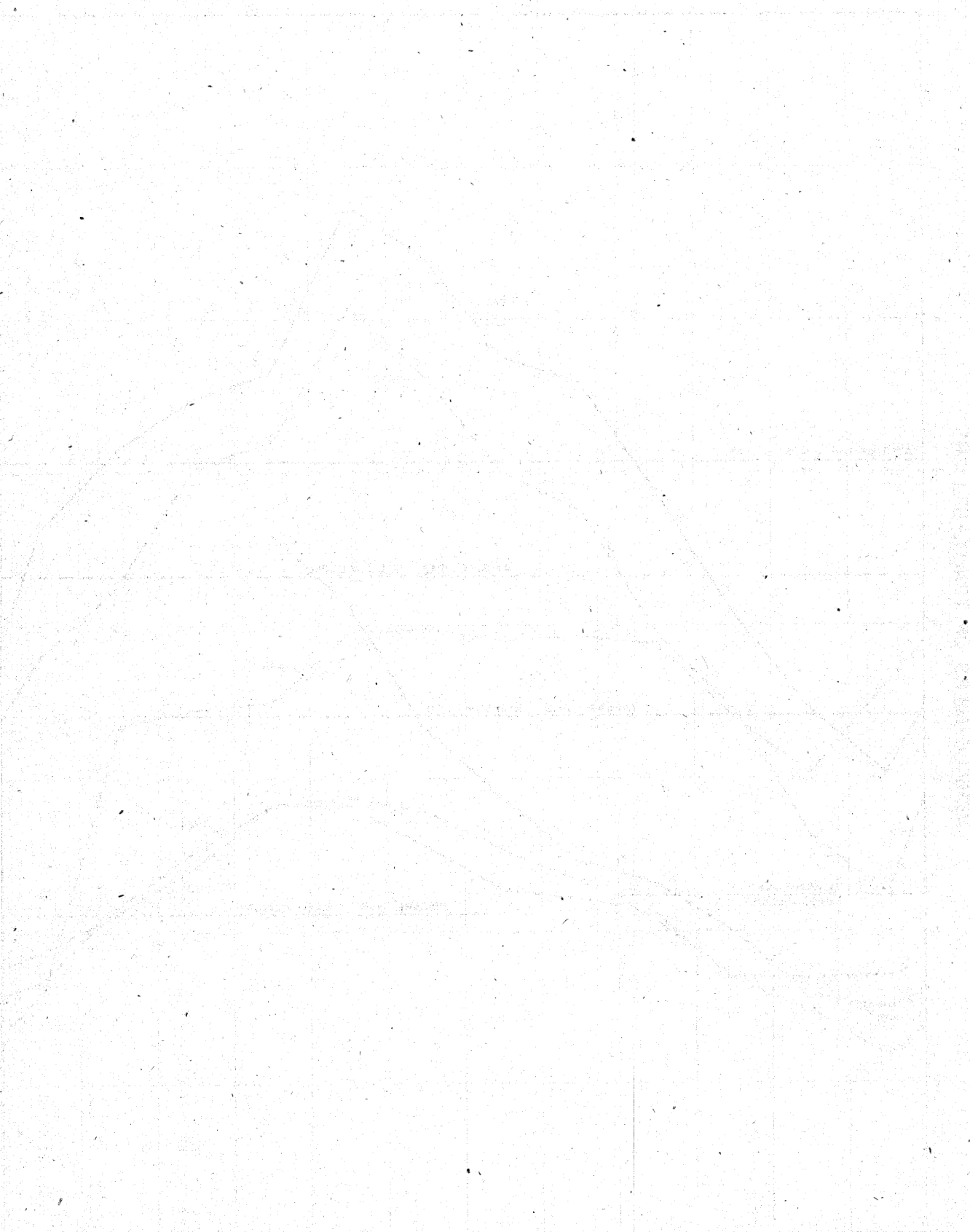


FIGURE I.—VEHICLE-MILES OF TRAVEL ON ALL RURAL ROADS
1940 TO 1945 BY MONTHS.



THE UNIVERSITY OF MICHIGAN LIBRARY
ANN ARBOR, MICHIGAN 48106-1000

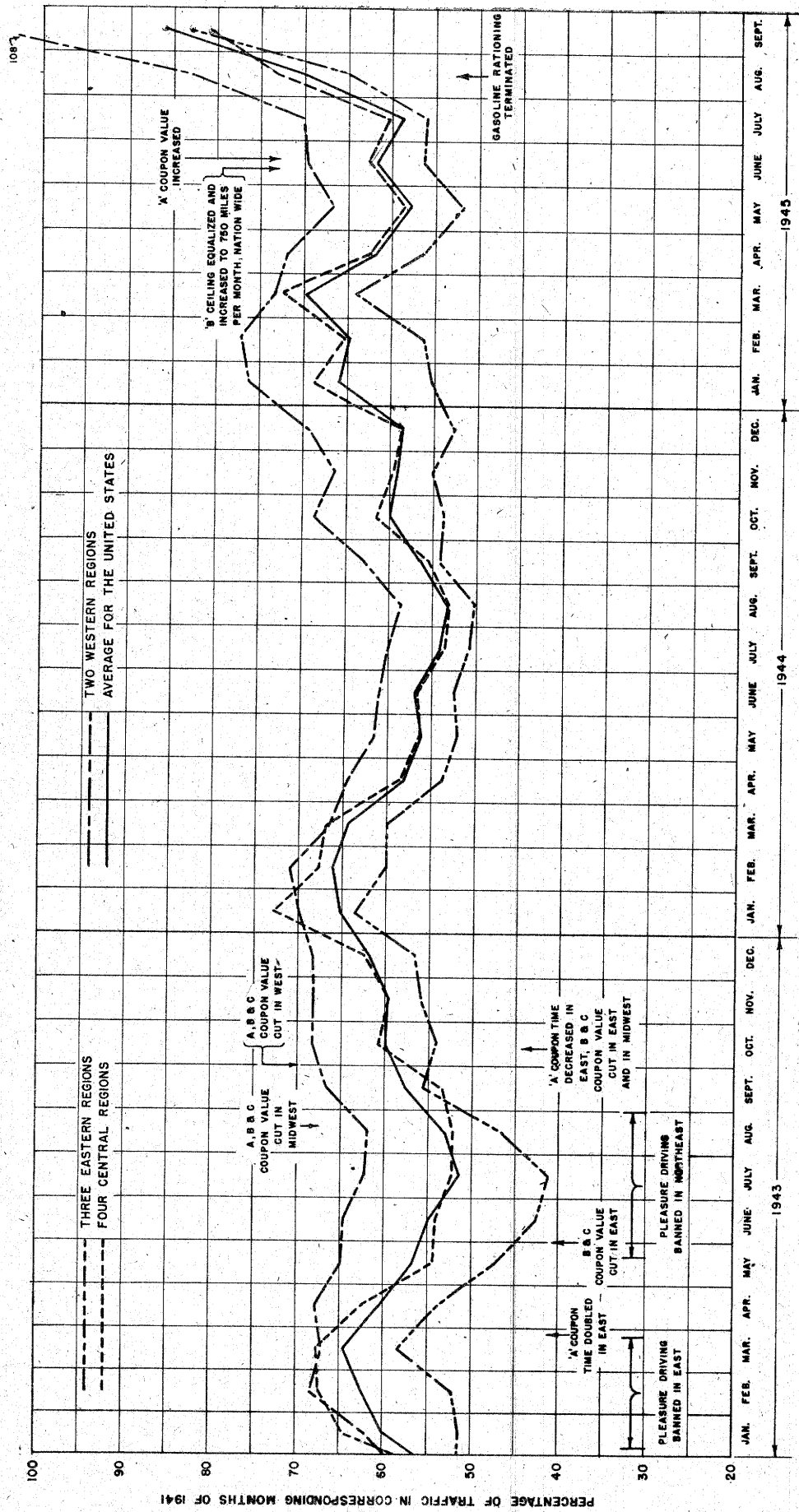


FIGURE 2.- PERCENTAGE RELATIONS OF RURAL TRAFFIC IN MONTHS OF 1943 1944 AND 1945 WITH THAT IN CORRESPONDING MONTHS OF 1941

