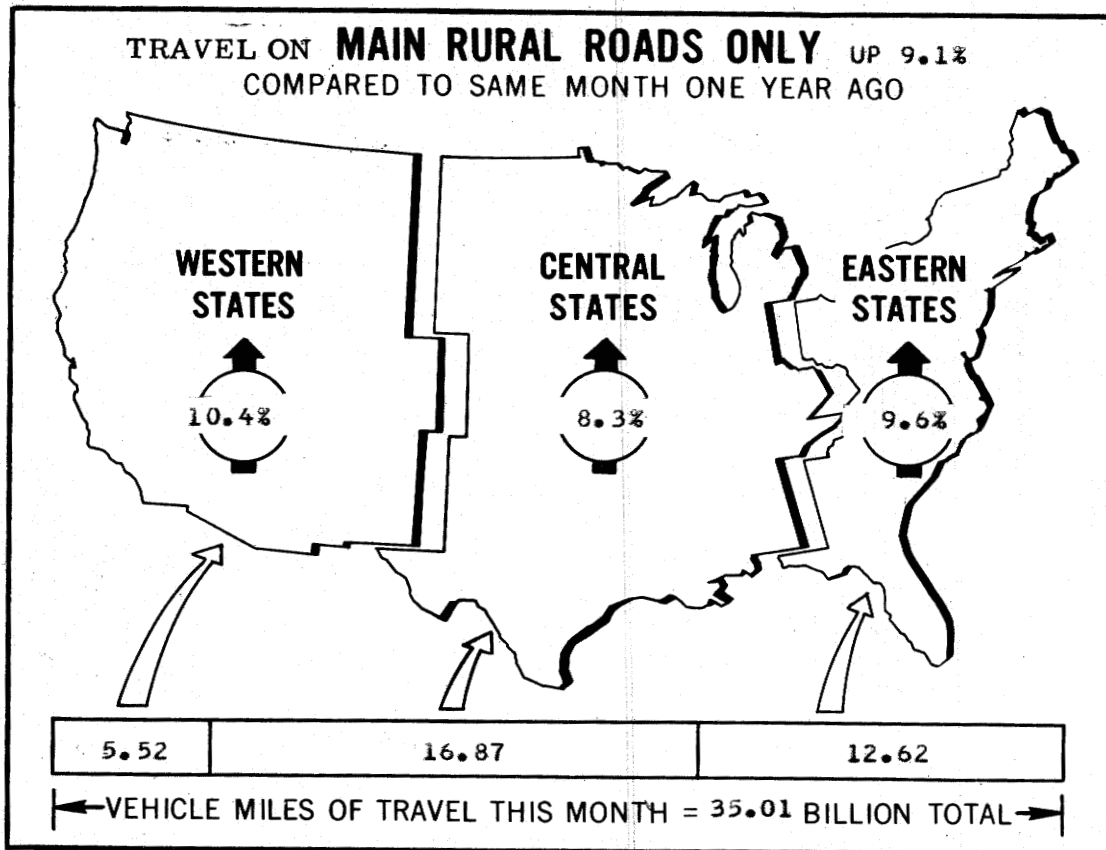


# TRAFFIC VOLUME TRENDS

U. S. DEPARTMENT OF TRANSPORTATION  
FEDERAL HIGHWAY ADMINISTRATION

FEBRUARY 1973  $\downarrow$

TRAVEL ON **ALL ROADS AND STREETS** UP 7.0%  
COMPARED TO SAME MONTH ONE YEAR AGO



✓ ALL DATA FOR THIS MONTH ARE PRELIMINARY, REVISED VALUES FOR PREVIOUS MONTH ARE SHOWN IN TABLES 1 AND 2

FOR OFFICIAL DISTRIBUTION

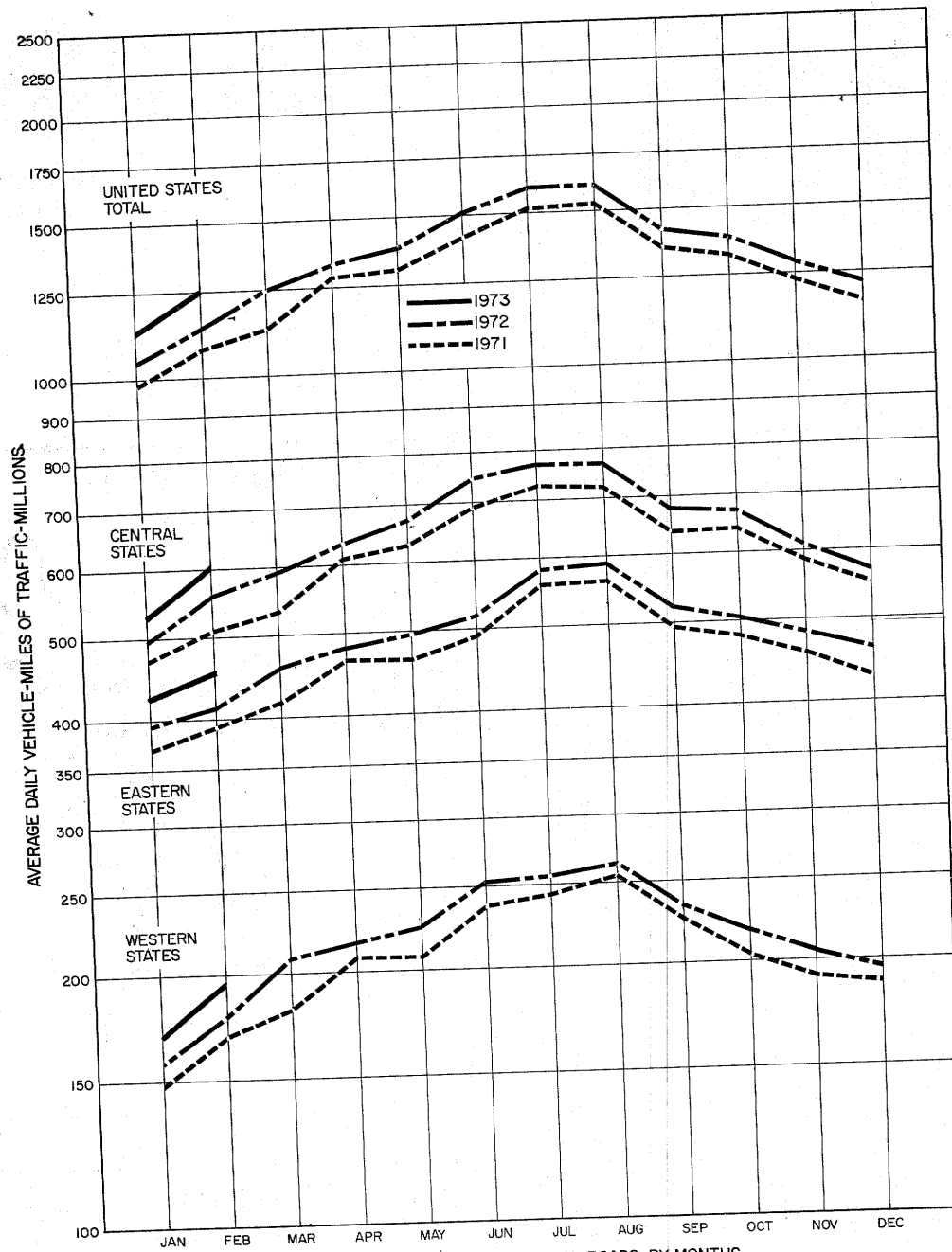


FIGURE 1 - TRAVEL ON MAIN RURAL ROADS, BY MONTHS

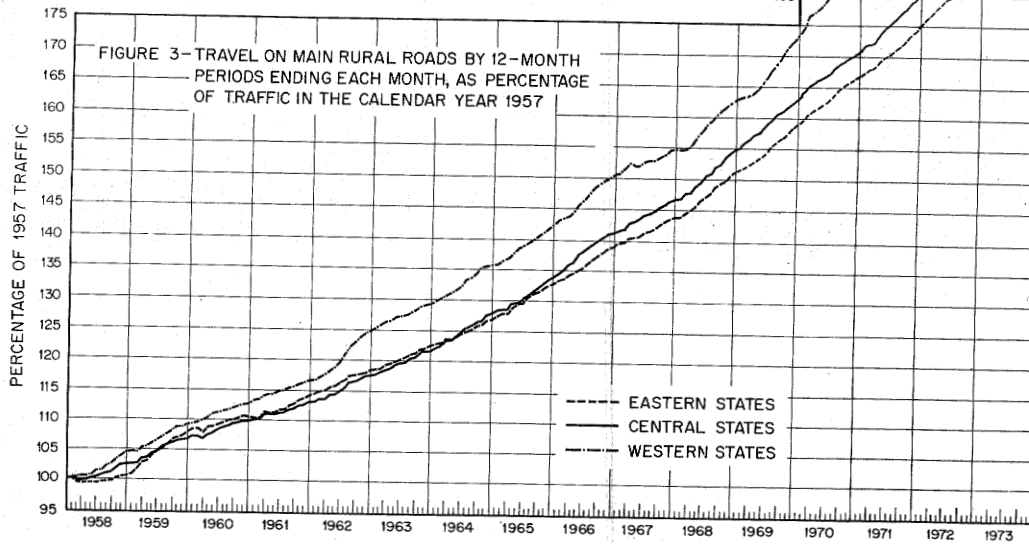
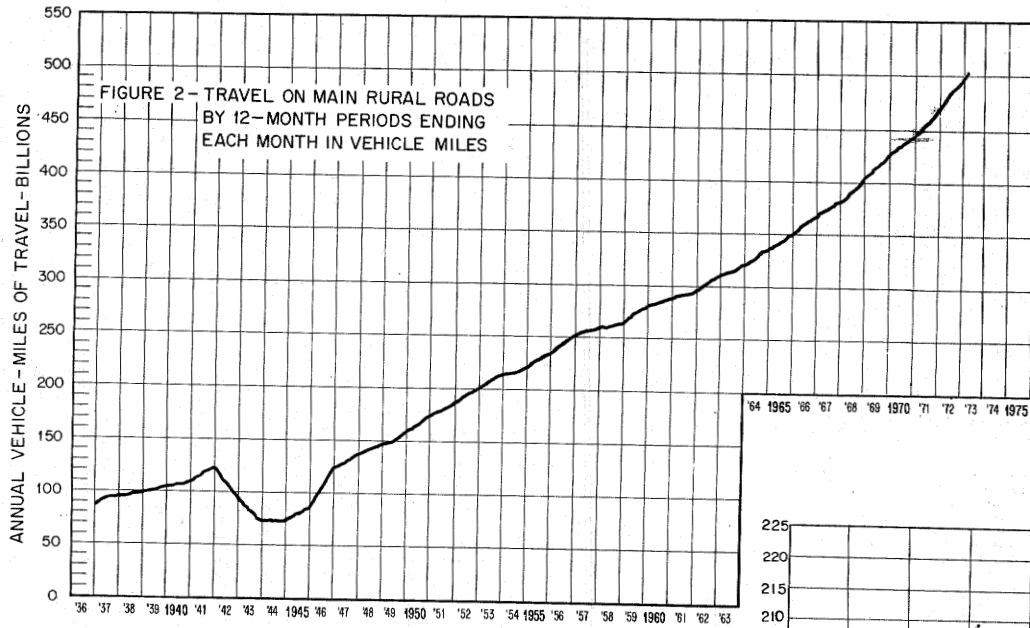


TABLE 1.-SUMMARY BY ROAD CLASS AND BY GEOGRAPHIC AREA

CLASS OF ROAD, ALL STATES:	PRELIMINARY DATA FOR FEBRUARY			REVISED DATA FOR JANUARY		
	VEHICLE-MILES (MILLIONS)		PERCENTAGE CHANGE	VEHICLE-MILES (MILLIONS)		PERCENTAGE CHANGE
	1973	1972		1973	1972	
MAIN RURAL ROADS.....	35,198	32,224	9.1	34,912	32,511	7.4
LOCAL RURAL ROADS.....	.....	.....	5.8	.....	.....	5.4
ALL RURAL ROADS.....	.....	.....	8.3	.....	.....	6.9
CITY STREETS.....	.....	.....	5.5	.....	.....	4.3
ALL ROADS AND STREETS.....	.....	.....	7.0	.....	.....	5.7
48 STATES (MAIN RURAL ONLY):						
EASTERN REGION.....	12,619	11,516	9.6	13,174	12,228	7.7
CENTRAL REGION.....	16,874	15,575	8.3	16,424	15,316	7.2
WESTERN REGION.....	5,516	4,997	10.4	5,205	4,862	7.1
TOTAL.....	35,009	32,088	9.1	34,803	32,406	7.4

TABLE 2.-CHANGES ON MAIN RURAL ROADS BY STATES

DIVISION AND STATE	FEBRUARY (PRELIMINARY)		JANUARY (REVISED)		DIVISION AND STATE	FEBRUARY (PRELIMINARY)		JANUARY (REVISED)	
	NUMBER OF STATIONS	PER-CENTAGE CHANGE	NUMBER OF STATIONS	PER-CENTAGE CHANGE		NUMBER OF STATIONS	PER-CENTAGE CHANGE	NUMBER OF STATIONS	PER-CENTAGE CHANGE
NEW ENGLAND:					EAST SOUTH CENTRAL:				
CONNECTICUT.....	-	-	16	8.2	ALABAMA.....	-	-	53	8.1
MAINE.....	19	9.9	24	7.0	KENTUCKY.....	39	9.9	39	7.9
MASSACHUSETTS.....	-	-	8	12.2	MISSISSIPPI.....	45	4.8	43	3.0
NEW HAMPSHIRE.....	45	16.6	50	10.0	TENNESSEE.....	19	8.6	21	0.3
RHODE ISLAND.....	5	19.8	6	8.3	WEST NORTH CENTRAL:				
VERMONT.....	45	10.7	44	7.6	IDAHO.....	27	8.9	28	7.3
MIDDLE ATLANTIC:					KANSAS.....	76	6.3	77	3.4
NEW JERSEY.....	20	33.3	16	9.3	MINNESOTA.....	-	-	33	12.7
NEW YORK.....	-	-	36	7.8	MISSOURI.....	19	9.1	70	7.9
PENNSYLVANIA.....	-	-	15	4.7	NEBRASKA.....	19	9.5	20	3.6
SOUTH ATLANTIC					NORTH DAKOTA.....	33	12.2	29	17.3
(NORTH):					SOUTH DAKOTA.....	31	10.1	29	10.3
DELAWARE.....	13	9.6	13	7.8	WEST SOUTH CENTRAL:				
MARYLAND.....	23	11.4	32	13.2	ARKANSAS.....	30	10.0	33	3.8
VIRGINIA.....	-	5.4	-	5.0	LOUISIANA.....	-	-	-	-
WEST VIRGINIA.....	27	13.0	26	8.9	OKLAHOMA.....	43	9.8	42	3.9
SOUTH ATLANTIC					TEXAS.....	113	5.3	114	2.9
(SOUTH):					MOUNTAIN:				
FLORIDA.....	-	-	49	9.2	ARIZONA.....	22	9.3	20	5.7
GEORGIA.....	-	-	-	-	COLORADO.....	39	10.1	41	9.2
NORTH CAROLINA.....	44	11.8	41	8.7	IDAHO.....	55	11.4	52	11.2
SOUTH CAROLINA.....	5	7.7	5	5.6	MONTANA.....	23	14.5	11	20.1
EAST NORTH CENTRAL:					NEVADA.....	30	6.5	30	4.6
ILLINOIS.....	20	8.6	19	10.7	NEW MEXICO.....	34	5.0	34	4.0
INDIANA.....	25	9.3	25	10.1	UTAH.....	41	10.3	36	1.6
MICHIGAN.....	-	-	-	-	WYOMING.....	37	8.0	31	9.3
OHIO.....	21	9.7	21	10.2	PACIFIC:				
WISCONSIN.....	35	11.3	33	13.6	CALIFORNIA.....	-	-	16	4.6
ALASKA.....	16	9.1	16	1.5	OREGON.....	75	12.1	80	9.0
HAWAII.....	-	-	-	-	WASHINGTON.....	6	15.1	26	13.7

NOTE: 1-RURAL MILEAGE OF EACH MAJOR TOLL ROUTE IS CONSIDERED AS ONE OR MORE STATIONS, DEPENDING ON STATES' METHOD OF REPORTING.  
 2-WHERE THE NUMBER OF STATIONS IS DASH AND THE PERCENTAGE CHANGE IS SHOWN, THE STATES PREPARED TRAFFIC ESTIMATES, GENERALLY BASED ON EXTENSIVE TRAFFIC SAMPLING SURVEYS.  
 3-WHERE THE NUMBER OF STATIONS AND THE PERCENTAGE CHANGE FOR A STATE ARE DASHES, THE STATE REPORT HAD NOT BEEN RECEIVED AT TIME OF PRINTING, OR NO COMPARABLE DATA WERE AVAILABLE.