

Witcher
2.215

PUBLIC ROADS ADMINISTRATION
FEDERAL WORKS AGENCY
Washington 25, D. C.

TRAFFIC VOLUME TRENDS

February 1949

On the basis of preliminary figures, motor vehicle travel on main and local roads for the country as a whole was higher during February 1949 than in any previous February.

	Rural traffic in vehicle-miles February 1949 (millions)	Percentage change from		
		1941	1943	1948
Main roads	10,997	+ 39.3	+119.4	+ 9.2
Local roads	3,791	+ 25.9	+ 91.0	+17.4
All rural roads	14,788	+ 35.6	+111.3	+11.2

In the western regions, travel was lower than in 1948 but was higher than in 1941. On the other hand, an increase over any previous year was shown in the eastern and central regions.

	Rural traffic in vehicle-miles February 1949 (millions)	Percentage change from		
		1941	1943	1948
Eastern regions	4,874	+ 33.3	+138.1	+19.0
Central regions	7,636	+ 39.3	+102.0	+11.4
Western regions	2,278	+ 29.0	+ 95.7	- 3.2

Travel on city streets and on rural roads as a whole was heavier than in any previous February.

	Percentage change from		
	1941	1943	1948
City streets	+ 27.1	+ 82.0	+ 6.1
Rural roads	+ 35.6	+111.3	+11.2
All roads and streets	+ 31.3	+ 95.9	+ 8.6

THE UNIVERSITY OF CHICAGO
DIVISION OF THE PHYSICAL SCIENCES
DEPARTMENT OF CHEMISTRY

REPORT OF THE COMMITTEE ON THE ORGANIZATION OF THE DEPARTMENT

1954-1955

The following is a summary of the work of the Committee on the Organization of the Department of Chemistry during the year 1954-1955. The Committee was organized in the fall of 1954 and has since that time been engaged in a study of the present organization of the Department and the possibilities for its improvement.

The Committee has held several public hearings and has received many suggestions from the faculty and the students. It has also held several private hearings and has received many suggestions from the faculty and the students.

The Committee has found that the present organization of the Department is based on a system of departments which is largely the result of historical accident. It is a system which is not only inefficient but also is a source of many of the difficulties which have beset the Department in the past.

The Committee has found that the present organization of the Department is based on a system of departments which is largely the result of historical accident. It is a system which is not only inefficient but also is a source of many of the difficulties which have beset the Department in the past.

The Committee has found that the present organization of the Department is based on a system of departments which is largely the result of historical accident. It is a system which is not only inefficient but also is a source of many of the difficulties which have beset the Department in the past.

The Committee has found that the present organization of the Department is based on a system of departments which is largely the result of historical accident. It is a system which is not only inefficient but also is a source of many of the difficulties which have beset the Department in the past.

The Committee has found that the present organization of the Department is based on a system of departments which is largely the result of historical accident. It is a system which is not only inefficient but also is a source of many of the difficulties which have beset the Department in the past.

The Committee has found that the present organization of the Department is based on a system of departments which is largely the result of historical accident. It is a system which is not only inefficient but also is a source of many of the difficulties which have beset the Department in the past.

The Committee has found that the present organization of the Department is based on a system of departments which is largely the result of historical accident. It is a system which is not only inefficient but also is a source of many of the difficulties which have beset the Department in the past.

The Committee has found that the present organization of the Department is based on a system of departments which is largely the result of historical accident. It is a system which is not only inefficient but also is a source of many of the difficulties which have beset the Department in the past.

The Committee has found that the present organization of the Department is based on a system of departments which is largely the result of historical accident. It is a system which is not only inefficient but also is a source of many of the difficulties which have beset the Department in the past.

TABLE 1.--PRELIMINARY SUMMARY OF AUTOMATIC TRAFFIC RECORDER DATA FOR
FEBRUARY 1949 INCLUDING 642 STATIONS IN 43 STATES

Type of highway and State	Number of stations	Traffic volume percentage change from February 1948	Type of highway and State	Number of stations	Traffic volume percentage change from February 1948
STATE HIGHWAYS			LOCAL HIGHWAYS		
Alabama	7	+20.4	Alabama	1	+ 7.6
Arizona	4	- 1.6	Connecticut	3	+40.3
Arkansas	18	+26.1	Delaware	2	+32.2
California	4	- 7.0	Georgia	3	+11.6
Colorado	19	+ 7.3	Indiana	1	+28.6
Connecticut	17	+26.6	Maryland	1	+39.7
Delaware	3	+18.3	Michigan	2	- 0.7
Florida	----	----	Missouri	2	+45.3
Georgia	7	+ 5.3	Montana	2	- 7.9
Idaho	8	-30.9	Nebraska	1	-13.0
Illinois	3	- 1.6	North Dakota	1	-49.2
Indiana	21	+13.1	Ohio	1	+12.6
Iowa	----	----	Oregon	1	+26.1
Kansas	14	+ 8.6	Rhode Island	1	+35.5
Kentucky	12	+10.4	Wisconsin	1	+ 0.7
Louisiana	16	+15.2			
Maine	12	+12.3	TOTAL - 15 STATES	23	+17.4
Maryland	17	+24.1			
Massachusetts	9	+21.0	ALL HIGHWAYS		
Michigan	26	+13.6	43 STATES	642	+11.2
Minnesota	24	+10.6			
Mississippi	10	+22.3	3 EASTERN REGIONS	171	+19.0
Missouri	25	+10.0			
Montana	12	- 3.8	4 CENTRAL REGIONS	357	+11.4
Nebraska	11	- 9.5			
Nevada	16	-16.5	2 WESTERN REGIONS	114	- 3.2
New Hampshire	12	+18.0			
New Jersey	3	+20.4			
New Mexico	16	+ 3.4			
New York	----	----			
North Carolina	20	+12.2			
North Dakota	9	- 8.1			
Ohio	12	+11.1			
Oklahoma	20	+12.0			
Oregon	10	- 9.2			
Pennsylvania	29	+13.5			
Rhode Island	2	+16.2			
South Carolina	7	+10.0			
South Dakota	10	+ 3.1			
Tennessee	15	+13.6			
Texas	86	+13.2			
Utah	12	+ 3.0			
Vermont	12	+ 9.2			
Virginia	----	----			
Washington	10	-17.2			
West Virginia	11	+26.2			
Wisconsin	8	+ 0.4			
Wyoming	----	----			
TOTAL - 43 STATES	619	+ 9.2			

Faint header text at the top of the page, possibly containing a title or reference number.

First main section of faint text, appearing as a list or series of entries.

Second main section of faint text, continuing the list or series of entries.

Third main section of faint text, continuing the list or series of entries.

Fourth main section of faint text, continuing the list or series of entries.

Fifth main section of faint text, continuing the list or series of entries.

Sixth main section of faint text, continuing the list or series of entries.

Seventh main section of faint text, continuing the list or series of entries.

Eighth main section of faint text, continuing the list or series of entries.

Faint footer text at the bottom of the page.



TABLE 2.--REVISED SUMMARY OF AUTOMATIC TRAFFIC RECORDER DATA FOR
JANUARY 1949 INCLUDING 696 STATIONS IN 46 STATES¹

Region and State	Number of stations	Traffic volume percentage change from January 1948	Region and State	Number of stations	Traffic volume percentage change from January 1948
NEW ENGLAND			EAST SOUTH CENTRAL		
Connecticut	20	+37.3	Alabama	7	+26.3
Maine	12	+17.6	Kentucky	12	+19.0
Massachusetts	8	+35.7	Mississippi	10	+29.2
New Hampshire	12	+22.9	Tennessee	15	+24.0
Rhode Island	4	+23.3	Subtotal	44	+24.4
Vermont	12	+15.3	WEST SOUTH CENTRAL		
Subtotal	68	+29.7	Arkansas	17	+30.5
MIDDLE ATLANTIC			Louisiana	12	+28.8
New Jersey	3	+33.2	Oklahoma	20	-16.7
New York	----	-----	Texas	88	+ 8.1
Pennsylvania	29	+21.6	Subtotal	137	+ 7.7
Subtotal	32	+24.1	MOUNTAIN		
SOUTH ATLANTIC			Arizona	4	+ 2.5
Delaware	5	+23.0	Colorado	22	- 2.6
Maryland	18	+21.7	Idaho	8	-14.7
Virginia	3	+15.0	Montana	14	-12.4
West Virginia	11	+35.8	Nevada	16	-16.5
Subtotal north portion	37	+24.8	New Mexico	16	- 5.6
Florida	18	+11.9	Utah	12	-18.7
Georgia	10	+ 5.5	Wyoming	----	-----
North Carolina	20	+ 9.1	Subtotal	92	- 7.9
South Carolina	5	+21.4	PACIFIC		
Subtotal south portion	53	+10.8	California	7	- 9.3
Subtotal region	90	+16.5	Oregon	11	-10.8
EAST NORTH CENTRAL			Washington	10	-20.3
Illinois	4	- 7.6	Subtotal	28	-13.3
Indiana	22	+13.4	TOTAL ALL STATES		
Michigan	28	+15.4	696 + 6.1		
Ohio	15	+10.9	STATE HIGHWAYS		
Wisconsin	9	+ 5.6	666 + 5.9		
Subtotal	78	+11.9	LOCAL HIGHWAYS		
WEST NORTH CENTRAL			30 + 6.6		
Iowa	33	- 6.8	3 EASTERN REGIONS		
Kansas	14	-13.5	190 +17.6		
Minnesota	24	+ 3.5	4 CENTRAL REGIONS		
Missouri	27	- 9.0	386 + 4.3		
Nebraska	12	-38.4	2 WESTERN REGIONS		
North Dakota	12	-18.8	120 - 8.4		
South Dakota	5	-29.9			
Subtotal	127	- 9.7			

¹ Combined State and local highways.



**TABLE 3.--NUMBER OF VEHICLES, CLASSIFIED BY TYPES, USING TOLL FACILITIES
FEBRUARY 1949 COMPARED WITH THOSE IN FEBRUARY 1948**

Facilities	1949			Percentage change from 1948		
	Total	Passenger cars ¹	Trucks and busses	Total	Pas- senger cars ¹	Trucks and busses
EASTERN REGIONS						
4 in the New England States	1,026,690	927,816	98,874	+30.0	+33.2	+5.9
14 in the Middle Atlantic States	10,142,056	8,760,380	1,381,676	+30.3	+35.0	+6.9
2 parkways in the Middle Atlantic States	1,108,730	1,108,730	-----	+45.1	+45.1	-----
Pennsylvania Turnpike ²	182,323	123,230	59,093	+23.0	+24.8	+19.4
5 in the South Atlantic States	425,492	341,591	83,901	+27.1	+32.0	+10.4
Maine Turnpike ²	73,366	64,638	8,728	+31.4	+29.1	+51.0
TOTAL - 27 facilities	12,958,657	11,326,385	1,632,272	+31.2	+35.5	+7.5
CENTRAL REGIONS						
3 on the Great Lakes Canadian border ³	205,927	191,282	14,645	+4.8	+4.2	+12.4
1 in the Great Lakes Region	6,491	5,265	1,226	+6.7	+8.0	+1.7
Subtotal 4 facilities	212,418	196,547	15,871	+4.8	+4.3	+11.5
3 on the Ohio River	235,109	198,433	36,676	+23.2	+27.2	+5.4
6 on the Mississippi and St. Croix Rivers St. Louis and North	332,128	265,583	66,545	+6.0	+1.8	+26.8
3 on the Miss. River south of St. Louis	91,200	64,142	27,058	+6.9	+5.9	+9.5
Subtotal 9 facilities	423,328	329,725	93,603	+6.2	+2.6	+21.2
4 on the Missouri River	136,340	106,923	29,417	-3.6	-5.3	+3.3
3 in the West South Central States	22,403	21,310	1,093	-4.9	-3.3	-28.3
Subtotal 7 facilities	158,743	128,233	30,510	-3.8	-5.0	+1.7
TOTAL - 23 facilities	1,029,598	852,938	176,660	+7.6	+6.5	+13.1
WESTERN REGIONS						
2 in California	2,513,954	2,283,204	230,750	-2.1	-2.3	-0.3
5 in the Oregon-Washington Area	299,319	251,118	48,201	-10.1	-12.7	+6.3
TOTAL - 7 facilities	2,813,273	2,534,322	278,951	-3.0	-3.4	+0.8
UNITED STATES						
TOTAL - 57 facilities	16,801,528	14,713,645	2,087,883	+22.3	+24.9	+7.0

¹Non-revenue vehicles included in report and treated as passenger cars unless otherwise specified.

²Number of vehicles, those using any portion of the facility.

³One of these facilities is in Western New York and therefore is related to similar facilities in the Central States.



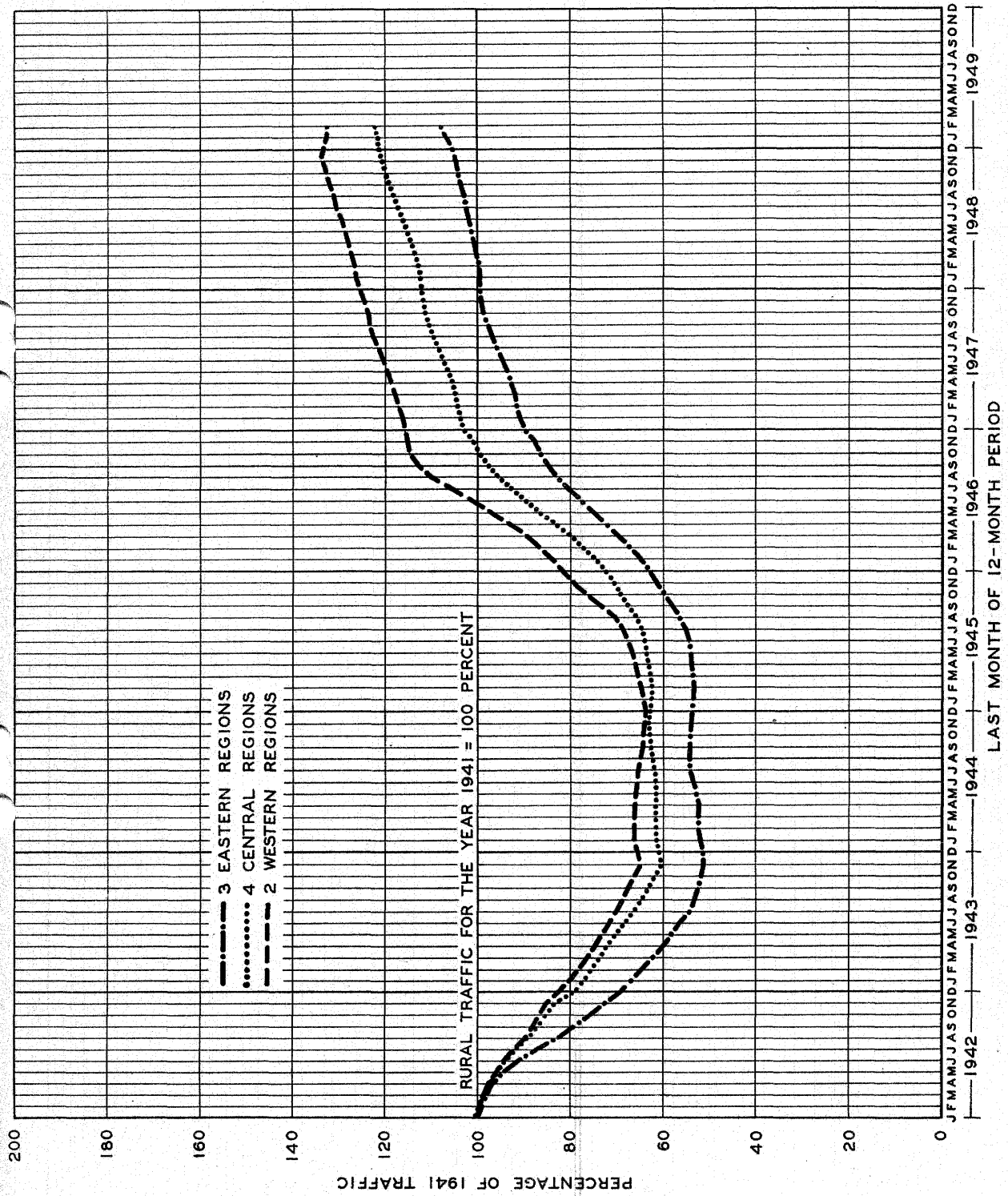


FIGURE 1 - TRAFFIC FOR YEAR ENDING EACH MONTH 1942 TO DATE AS A PERCENTAGE OF TRAFFIC FOR THE CALENDAR YEAR 1941 BY GEOGRAPHIC REGIONS



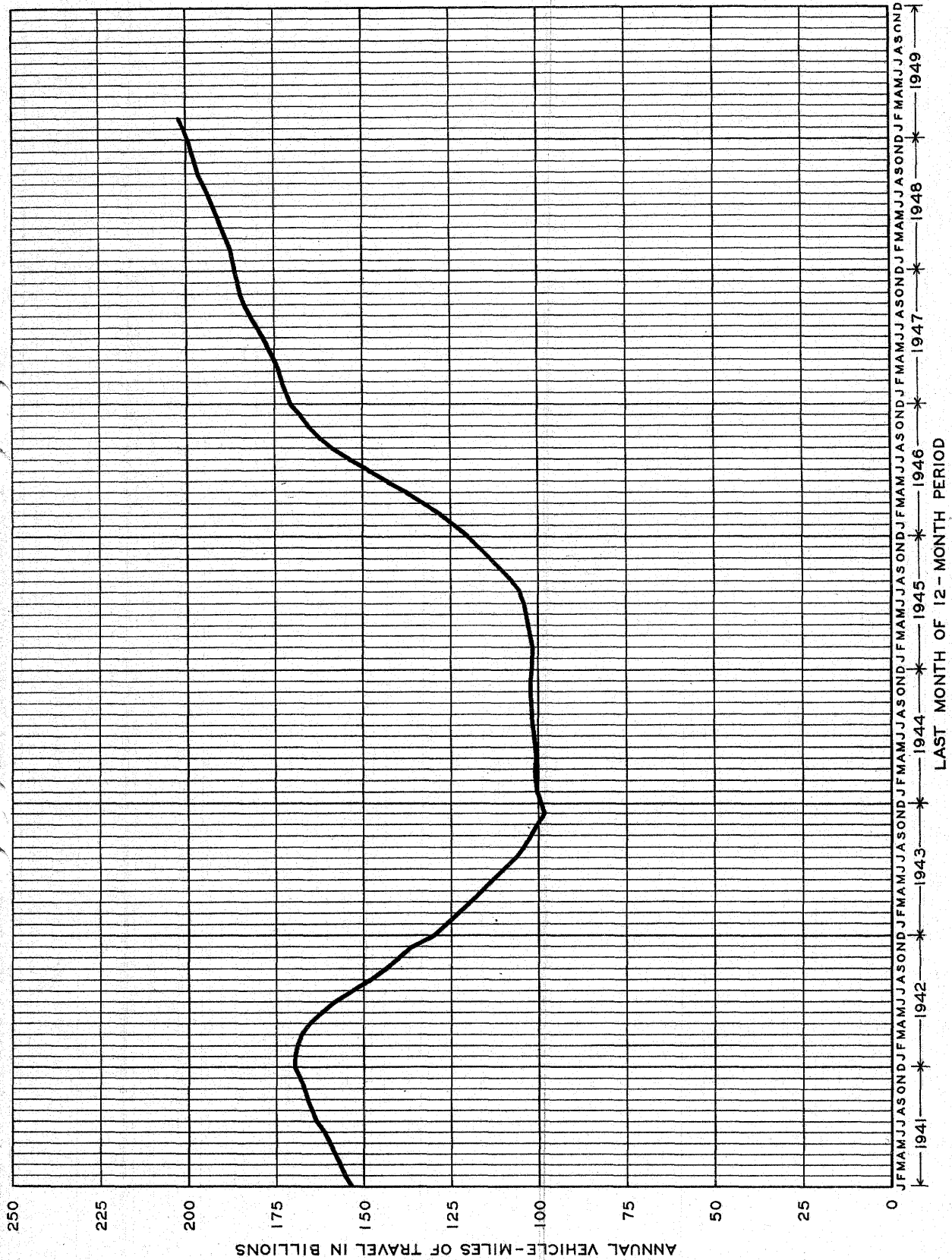


FIGURE 2 - VEHICLE-MILES OF TRAVEL ON ALL RURAL ROADS BY 12 MONTH PERIODS ENDING EACH MONTH - 1941 TO DATE



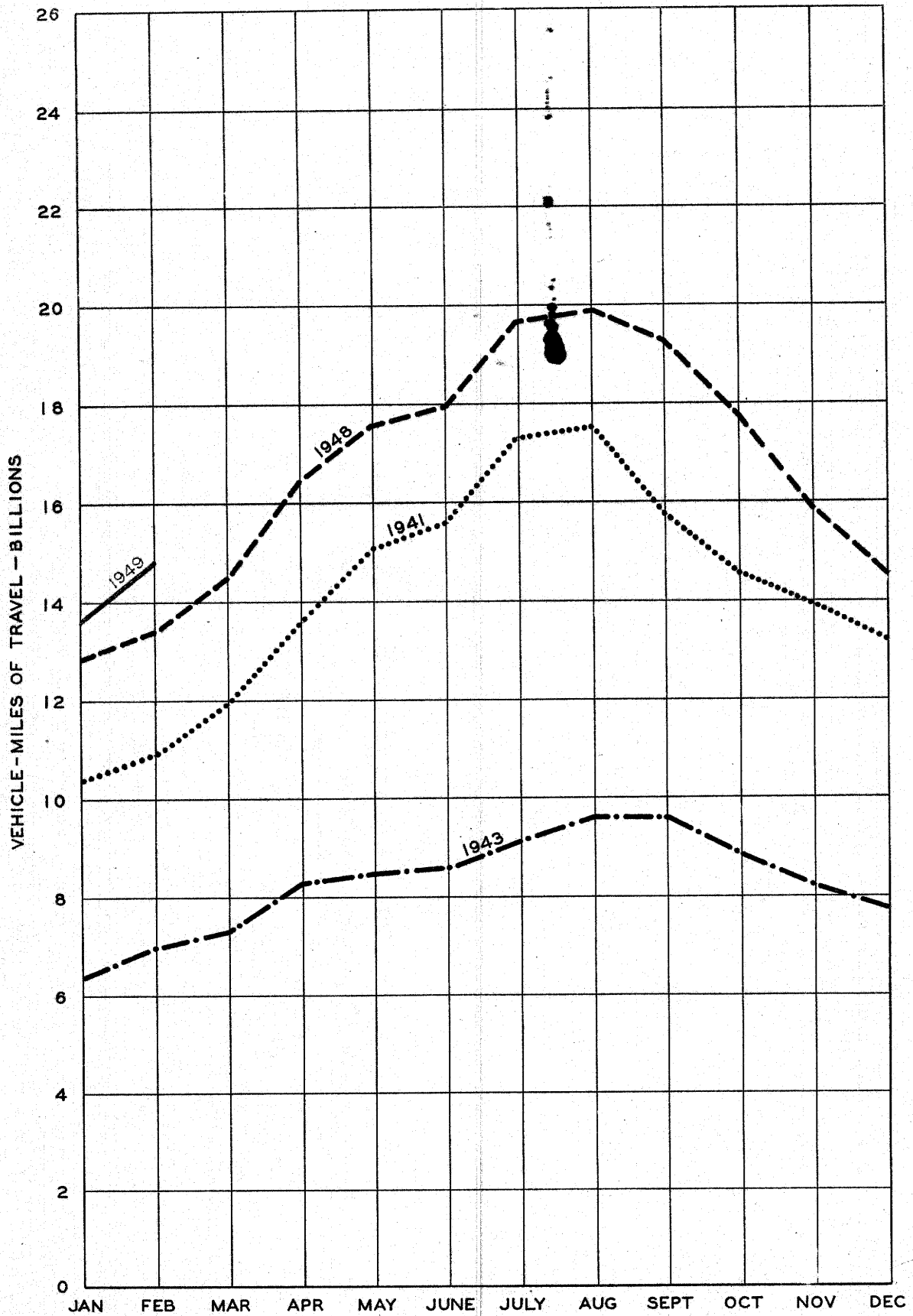
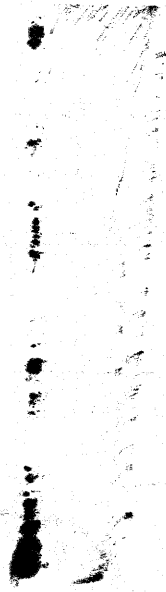


FIGURE 3 - VEHICLE-MILES OF TRAVEL ON ALL RURAL ROADS IN 1941, 1943, 1948 AND 1949



THE UNIVERSITY OF CHICAGO
LIBRARY
540 EAST 57TH STREET
CHICAGO, ILL. 60637