



# Department of Defense MANUAL

NUMBER 4140.26, Volume 2  
September 24, 2010

*Incorporating Change 2, June 30, 2014*

---

---

USD(AT&L)

SUBJECT: DoD Integrated Materiel Management (IMM) for Consumable Items: Item Management Coding (IMC) Criteria

- References:
- (a) DoD Directive 5134.12, "~~Deputy Under Assistant~~ Secretary of Defense for Logistics and Materiel Readiness (~~DUASD~~(L&MR)),” May 25, 2000, *as amended*
  - (b) DoD 4140.26-M, “Defense Integrated Materiel Management Manual for Consumable Items,” May 16, 1997 (cancelled by Volume 1 of this Manual)
  - (c) DoD ~~Directive Instruction~~ 4140.01, “~~DoD~~ Supply Chain Materiel Management Policy,” ~~April 22, 2004~~*December 14, 2011*
  - (d) DoD Directive 5025.01, “DoD ~~Directive Issuances~~ Program,” ~~September 26, 2012~~*June 6, 2014*
  - (e) Volume 4 of DoD 4100.39-M, “FLIS Procedures Manual Item Identification,” ~~December 2009~~*May 2010*
  - (f) Joint Publication 1-02, “Department of Defense Dictionary of Military and Associated Terms,” current edition

## 1. PURPOSE

a. Manual. This Manual is composed of several volumes, each containing its own purpose. In accordance with the authority in Reference (a), the purpose of the overall Manual is to reissue Reference (b), to provide requirements and procedures consistent with Reference (c), for integrated materiel managers and others who work within or with the DoD supply system to determine if an item qualifies for wholesale management; submitting and processing supply support requests, and submitting and processing logistic reassignment transactions.

b. Volume. This Volume establishes uniform guidance for IMM processes dealing with IMC criteria and related actions applicable to consumable items.

## 2. APPLICABILITY. This Volume applies to:

a. OSD, the Military Departments, the Office of the Chairman of the Joint Chiefs of Staff and the Joint Staff, the Combatant Commands, the Office of the Inspector General of the

Department of Defense, the Defense Agencies, the DoD Field Activities, and all other organizational entities within the Department of Defense (hereafter referred to collectively as the “DoD Components”).

b. Federal agency organizations participating with the DoD Components, e.g., the U.S. Coast Guard (USCG), Federal Aviation Administration (FAA), and General Services Administration (GSA), but only when and to the extent they adopt the terms of this Manual.

3. DEFINITIONS. See Glossary.

4. POLICY. According to Reference (c), it is DoD policy that the materiel management functions shall be implemented with DoD standard data systems.

5. RESPONSIBILITIES. See Enclosure 1.

6. PROCEDURES. See Enclosure 2.

7. RELEASABILITY. **UNLIMITED***Cleared for public release*. This Volume is approved for public release and is available on the Internet from the DoD Issuances Website at <http://www.dtic.mil/whs/directives>.

8. EFFECTIVE DATE. This Volume:

a. Is effective September 24, 2010.

b. ~~Must be reissued, cancelled, or certified current within 5 years of its publication in accordance with DoD Instruction 5025.01 (Reference (d)). If not, it will expire effective September 24, 2020 and be removed from the DoD Issuances Website if it hasn't been reissued or cancelled before this date in accordance with DoD Instruction 5025.01 (Reference (d)).~~



Alan F. Estevez  
Principal Deputy Assistant Secretary of Defense  
for Logistics and Materiel Readiness

Enclosures

1. Responsibilities
  2. Procedures
- Glossary

TABLE OF CONTENTS

ENCLOSURE 1: RESPONSIBILITIES.....4

    ASSISTANT SECRETARY OF DEFENSE FOR LOGISTICS AND MATERIEL  
    READINESS (ASD(L&MR)) .....4

    SECRETARIES OF THE MILITARY DEPARTMENTS; DIRECTORS OF  
    DEFENSE LOGISTICS AGENCY (DLA) AND NATIONAL SECURITY  
    AGENCY (NSA); COMMANDANT, USCG; AND ADMINISTRATORS OF  
    OTHER FEDERAL AGENCIES .....4

ENCLOSURE 2: PROCEDURES.....5

    IMC .....5

    IMC CRITERIA.....6

    APPENDIXES

        1. IMM ASSIGNMENTS OF FSCS FOR CONSUMABLE ITEMS .....13

        2. FSC EXCLUDED FROM IMC .....31

        3. IMC FILTER CHART .....34

        4. IMC J, DESIGN UNSTABLE, REVIEW PROCESS .....35

GLOSSARY .....36

    ABBREVIATIONS AND ACRONYMS .....36

    DEFINITIONS.....37

TABLES

    1. IMM Assignments of FSCs for Consumable Items .....13

    2. FSC Excluded From IMC .....31

FIGURES

    1. IMC Filter Chart .....34

    2. IMC J, Design Unstable, Review Process .....35

ENCLOSURE 1

RESPONSIBILITIES

1. ASSISTANT SECRETARY OF DEFENSE FOR LOGISTICS AND MATERIEL READINESS (ASD(L&MR)). The ASD(L&MR), in accordance with Reference (a) and under the authority, direction, and control of the Under Secretary of Defense for Acquisition, Technology, and Logistics (USD(AT&L)), shall approve or disapprove requests, as appropriate, received from the Military Departments to retain selected items for Military Department management, as defined in IMC Criterion 8, Special Waivers (IMC Q) in paragraph 2.h. of Enclosure 2 of this Volume.

2. SECRETARIES OF THE MILITARY DEPARTMENTS; DIRECTORS OF DEFENSE LOGISTICS AGENCY (DLA) AND NATIONAL SECURITY AGENCY (NSA); COMMANDANT, UNITED STATES COAST GUARD (USCG); AND ADMINISTRATORS OF OTHER FEDERAL AGENCIES (e.g., FEDERAL AVIATION ADMINISTRATION (FAA) AND GENERAL SERVICES ADMINISTRATION (GSA)). The Secretaries of the Military Departments; the Directors of DLA and NSA; and the Commandant, USCG and Administrators of other Federal agencies (FAA and GSA) when agreed to by these agencies, shall:

a. Implement the procedures of this Volume.

b. Submit requests to ASD(L&MR) via the Integrated Material Management Committee (IMMC) Chair for obtaining waivers from IMM as authorized by IMC Criterion 8, Special Waivers (IMC Q) in paragraph 2.h. of this Volume.

ENCLOSURE 2

PROCEDURES

1. IMC

a. All National Stock Numbered (NSN) items, items requiring NSN assignment, and new items entering the DoD supply system will be assigned an item management code in the designated Federal Supply Classes (FSCs) contained in Table 1 in Appendix 1 to this enclosure.

b. IMM assignments of Federal supply classes for consumable items that are excluded from IMC and are to be retained for Military Department management are contained in Table 2 in Appendix 2 to this enclosure.

c. Application of the most appropriate IMC criteria rests with the coding activity based on a review of the item's characteristics.

(1) As each item enters the DoD supply system, the IMC criteria will be in accordance with the IMC criteria filter chart (Figure 1 in Appendix 3 to this enclosure).

(2) Items that meet the criteria for IMCs D, E, F, B, P, J, L, N, Q, V, and Y will be retained for IMM by the Military Departments or the designated inventory manager (IM). Items that meet the criteria for IMC T will be retained by the Military Departments until the effective transfer date.

(3) All other items will be consolidated for IMM by DLA or GSA based on FSC.

d. In the following item situations, the IMC criteria will be applied as indicated:

(1) Interchangeable and Substitutable (I&S) Family Groups

(a) All I&S family group items normally will be managed by the same IMM. If a new item master is assigned, the related item will be reassigned to the IMM of the master.

(b) When an I&S family group item is excluded because of a user's requirement and the IM's concurrence, the excluded item, the related item, and the master item will be processed as follows:

1. If the existing related item or master item is DLA- or GSA-managed, the excluded item will be assigned to DLA or GSA.

2. If the existing related item or master item is Military Department-managed, the excluded item will be assigned to the Military Department only if that Military Department has retail interest in the excluded item. If the Military Department has no retail interest, the

introducing or proposing Military Department will be assigned as wholesale manager of the excluded item.

3. All NSNs in a generic family will be assigned the same IMC.

(2) Nuclear Ordnance. All nuclear ordnance items as defined in Volume 4 of DoD 4100.39-M (Reference (e)) will be screened against the IMC criteria and will be processed as follows:

(a) Military Department -designed and quality-controlled nuclear ordnance items will be managed by the appropriate Military Department or NSA.

(b) Items bearing Commercial and Government Entity (CAGE) codes 57991, 67991, and 77991 (assigned to Army, Navy, and Air Force controlled items respectively) will not be given an IMC.

(3) Cryptology Materiel. Items that are unique to cryptologic application and are under the design cognizance of the NSA, regardless of inventory control or supply support responsibility, will be item management coded by the appropriate cryptology activity as follows:

(a) NSA design-controlled (CAGE code 98230) items with a reference number category code (RNCC) 1 or 3 will be assigned an IMC in accordance with Figure 1 and will be managed by the appropriate cryptology activity.

(b) NSA specification-controlled CAGE code 98230 items (RNCC 7) will be assigned an IMC code in accordance with Figure 1 and will be managed by the IMM.

(c) Other items within the cryptology community will also be assigned an IMC in accordance with Figure 1 and will be managed by the appropriate IMM.

2. IMC CRITERIA. All NSN items will be retained for IMM by the Military Departments or designated IM in accordance with the criteria listed in this section. Application of the IMC criteria is a sequential process as identified in Figure 1. All other items that do not meet the criteria will be assigned to DLA or GSA.

a. Criterion 1- Major End Items of Equipment (IMC D). Items that are of such importance to the operational readiness of operating units that they are subject to continuing centralized, IMM, and asset control throughout all command and support echelons.

(1) This criterion ensures that the Military Departments or designated IM retain under their management those end items which should and do receive premium and comprehensive supply management attention, both in the supply system and in all command echelons within the Military Department.

(2) On such items, buy requirements are generally tied directly to unit allowances and specific needs normally known to the Military Department or designated IM.

(3) Documentation for return coding request package for items presently managed by DLA and/or GSA will require the identification of processes in place to track major end items of equipment.

b. Criterion 2 – Depot-Level Repairables (IMC E). Items that are designated for repair at depot level or items that were designated for repair below depot level but subsequently determined that repair cannot be accomplished at that level, will have their unserviceable carcasses either forwarded to the depot for repair or condemnation or reported to the inventory control point (ICP) for disposition.

(1) This criterion is intended to ensure that the Military Department or designated IM retains management of recoverable items on which consideration of the repair pipeline at or below the depot level by the managing ICP is essential to assure efficient management of the item.

(2) This criterion applies in those instances when the ICP must know the total quantity in use by the operating forces and in stock below the depot level and for which the ICP predicts asset losses, as well as when the ICP must consider such factors as carcass return rate, washout rate, or repair turnaround time in determining purchase quantities. This criterion also applies to recoverable items under any of the following conditions:

(a) The ICP, before purchasing to replenish an item in stock, takes action, other than establishing credit to encourage return, to ensure the return of carcasses from the operating forces for repair.

(b) An item is designated as repairable because needed knowledge, tools, test equipment, or techniques are available only at the depot maintenance level.

(3) Field-level repairables are not covered by this criterion. Such items are recoverable only in the sense that they are not consumed in use, but they require only local base or field reconditioning to be restored to their intended function. Specifically, this criterion does not support retention of such items for Military Department and/or agency management.

(4) Required documentation to be included in the return coding request package for items presently managed by DLA and/or GSA include: engineering or other analysis that resulted in the decision that these items should be repaired; the activity that will be doing the repair; the source, maintenance and recoverability (SM&R) code to be assigned; and confirmation that carcass returns will be included in the computation of future procurement actions. The 4th or 5th position of the SM&R code should reflect H, L, D, or K.

c. Criterion 3 – Communications Security Signal Intelligence (IMC F). Items controlled by a single agency for all Federal applications will be retained by the designated IM for IMM.

(1) This criterion ensures that items controlled by NSA, either directly or through licensing procedures, are retained by the designated IM. The NSA exercises control of these items either because of design characteristics or special test inspection and quality control requirements.

(2) Items furnished by the Military Department to NSA should not be retained under this criterion.

(3) Required documentation in the return coding request package for items presently managed by DLA and/or GSA includes written confirmation with verification of license from NSA.

d. Criterion 4 – Contractor-Managed Items (IMC B). This criterion applies to consumable items that are unique to a weapon system, when the items have been included in a performance-based life-cycle product support (PBL) or contractor logistics support (CLS) contract.

(1) This criterion permits retention by the Military Departments' contractor or agent.

(a) Consumable items not unique to a weapon system (common items) will be assigned to DLA or GSA for management. The Military Departments will coordinate with DLA to ensure that a support item or an acceptable substitute item is not already managed in the Department of Defense.

(b) Items that become common to another Military Department (where such Military Department is not currently covered under the PBL contract or memorandum of agreement) will be logistically reassigned to DLA or GSA at the time of the next contract renewal. The Military Department administering the CLS/PBL contract will ensure that all customers are supported until such time as the logistics reassignment can occur.

(2) The consumable item must be unique to the weapon system. Required documentation to be included in the return coding request package for items presently managed by DLA and/or GSA include the contract number, vendor identification, and weapon system assignment of the items being assigned to a contractor IM.

e. Criterion 5 - Non-ordnance Nuclear (IMC P). This criterion applies to items used in nuclear propulsion plants and directly associated systems including related safety and recovery equipment, nuclear weapon systems but not classified as nuclear ordnance, or items that require a nuclear regulatory commission license to build, maintain, transport, and use. Items classified under Criterion 5 are exempt from IMM assignment to any manager other than the Military Department responsible for the major end-item component.

(1) This criterion retains for Military Department management those items applicable to non-ordnance nuclear systems. This includes items applicable to nuclear power plants, nuclear submarine safety programs (level I/sub-safe), and deep submergence nuclear systems. Such items have highly technical documentation, special inventory management and procurement controls, and issues that are restricted to specified customers. Procurement of such specially



designed and tested items requires vendors to submit to the procurement activity test reports certifying that the items comply with governing requirements. These items require stringent technical and quality control to ensure the integrity, reliability, and safety of the nuclear components and systems. Requests for waivers, material changes, specification revisions, and similar technical actions must be approved by the designated Military Department headquarters organization.

(2) Required documentation to be included in the return coding request package for items presently managed by DLA and/or GSA include identification of the Military Department activity source of supply routing identifier code authorized to manage the item.

f. Criterion 6 – Design Unstable (IMC J). This criterion applies to items determined by technical decision during the provisioning cycle, during introduction into logistic systems, or during IMC, to be highly subject to design change or replacement of the item for up to 2 years after item introduction. These items will be reviewed for recoding when the IM is notified that the item is used by another Military Department and/or agency, when the design becomes stabilized, or when the item has been in operational use for 2 years.

(1) This criterion permits the Military Departments to retain the management of items in the formative stages of development if it may be reasonably expected that the items' design will likely change during their introduction into the supply system.

(2) This criterion reflects the engineering judgment exercised at time of introduction of an item into the supply system when abnormal failure rates are predicted or specific interim design problems are identified. It also covers those situations where experience at time of coding indicates an item is unstable.

(3) This criterion should not be used to retain an item when stability is unknown; rather, it should be used to retain an item when engineering judgment indicates that the item is, or can be expected to be, of unstable design.

(4) This criterion should be applied to the item itself and not to a part or component because that part or component has application in a higher assembly, equipment, or weapon which is considered unstable.

(5) The IMMC will conduct a quarterly statistical review for all IMC J items. The Military Departments will conduct an engineering review every 2 years, either recoding the items as stable or confirming their continued instability to the IMMC. (See Figure 2 in the appendix of this enclosure.)

(6) Justification for retention of items must be available to auditors. IMMC-approved standard justification reasons are as follows:

(a) Item is not source-controlled nor purchased to a manufacturer's part number.

(b) Item is under continuous or regular review due to high volume of changes.

(c) There are configuration changes in progress.

(d) There are efforts underway to identify other items or sources to replace the current item or source(s).

(e) Item has been identified as a safety hazard and/or is under investigation as a potential contributor to a mishap.

(f) Investigations are underway due to repetitive quality discrepancy reports or test failures.

(g) Other, define reason.

(7) There will be no return coding of items presently managed by DLA and/or GSA that become unstable after transfer. The Military Department engineering support activity will have to coordinate with the IMM.

g. Criterion 7 – Special Categories (IMC-L/IMC-N). This criterion applies to materiel not usually replenished through wholesale supply system channels, limited to items fabricated at Military Department industrial activities for local use or direct issue; items designed by and fabricated at Military Department industrial activities and not subject to procurement from civilian industrial sources; items categorized as modification/alteration/conversion sets or kits intended for one-time use; or items obtained only by reclamation.

(1) IMC-L

(a) Items fabricated at Military Department industrial activities for local use or direct issue. This category includes those items designated for local fabrication at Military Department industrial activities for local use or direct issue to customers including the Security Assistance Program customers.

1. The intent of this category is to retain, under the management of the Military Departments, items which by design are fabricated at the user level.

2. This category does not cover items locally fabricated for expediency when a required item cannot otherwise be obtained in sufficient time. In addition, this criterion does not apply to items for which a Military Department industrial activity is the only source of supply.

(b) Items obtained only by reclamation. This category provides for Military Department retention of items for which reclamation, on an as-required basis, is the only planned source of supply. Should the item status change, warranting procurement action, the item should be recoded.

(c) Required documentation to be included in the return coding request package for items presently managed by DLA and/or GSA will include reclamation documents or disassembly orders.

(2) IMC-N

(a) Modification, alteration, and/or conversion sets or kits intended for one-time use.

1. This category covers situations in which such modification, alteration, or conversion sets or kits are procured for one-time use, and replenishment or replacement is not contemplated.

2. This category applies even when procurement occurs on a phased basis. Specifically, it retains under the management of the Military Department and/or agency those sets or kits for which requirements are determined on a program basis, such as the quantities of equipment to be modified.

(b) Required documentation to be included in the return coding request package for items presently managed by DLA and/or GSA includes modification documents or the applicable Time Compliance Technical Order (TCTO), as well as an explanation of the one-time-use application.

h. Criterion 8 – Special Waivers (IMC Q). This criterion applies to items that have been approved by ASD(L&MR) as special waivers on a case-by-case basis.

(1) This criterion permits retention of item management by the Military Departments when authorized by ASD(L&MR). Items of demilitarization code P or G, defined in the Glossary, will be retained for Military Department management as IMC Q without requiring authorization by ASD(L&MR).

(2) IMC Criterion 8 (Code Q) will not be applied to IMC transactions before receipt of ASD(L&MR) approval to retain such items for Military Department and/or agency management.

(3) Required documentation to be included in the return coding request package for items presently managed by DLA and/or GSA include electronic or paper copy approval from ASD(L&MR) authorizing the waiver and the following supporting documentation:

(a) Nature of the program, types of items involved, and the reasons why the program should be considered as a special waiver to consolidation of IMM.

(b) Extraordinary management control techniques applied and any further explanation considered appropriate to the recommendation for Military Department retention.

(c) Method by which the individual items will be uniquely identified to the specific program or weapon system under consideration.

(d) List of specific items addressed by the waiver and a brief description of the anticipated negative impact to the respective Military Department mission requirement if the waiver is not approved.

i. Criterion 9 –Terminal and Obsolete Items (IMC V and IMC Y)

(1) IMC V. This criterion:

(a) Applies to items currently managed by the Military Departments and is not applicable to items managed by DLA and/or GSA.

(b) Permits the Military Departments to retain management of stand-alone items of supply (Bachelor) and is coded with one of the following acquisition advice codes (AACs): V – Terminal Item, X – Semi-Active Item No Replacement, and Y – Terminal Item (Stock exhausted). Items in this category will be removed from the DoD inventory either through attrition or disposal and will not be procured in the future.

(2) IMC Y. This criterion:

(a) Applies to items currently managed by the Military Departments and is not applicable to items managed by DLA and/or GSA.

(b) Permits the Military Departments to retain management of items of supply where the entire I&S family, to include the head and all members, is coded to one of the following AACs: V – Terminal Item or Y – Terminal Item (Stock exhausted). Items in this category will be removed from the DoD inventory either through attrition or disposal and will not be procured in the future. This criterion does not apply to families where the head of the family is coded for future procurements.

j. Criterion 10 – Awaiting Transfer (IMC T). This criterion applies to items that no longer qualify for Military Department retention. Items in this category have been identified for transfer to DLA and/or GSA pending submission of a logistics reassignment transaction. Military Departments submit a document identifier code transaction “LVA” to DLIS to begin the reassignment process.

Appendixes

1. Table 1 - IMM Assignments of FSCs For Consumable Items
2. Table 2 - FSC Excluded From IMC
3. Figure 1 - IMC Filter Chart
4. Figure 2 - IMC J, Design Unstable, Review Process

APPENDIX 1 TO ENCLOSURE 2Table 1. IMM Assignments of FSCs For Consumable Items

<u>FSC</u>	<u>Title</u>	<u>Designated IM</u>
1005	Guns, through 30 millimeters (mm)	DLA
1010	Guns, over 30 mm up to 75 mm	DLA
1015	Guns, 75 mm through 125 mm	DLA
1020	Guns, over 125 mm through 150 mm	DLA
1025	Guns, over 150 mm through 200 mm	DLA
1030	Guns, over 200 mm through 300 mm	DLA
1035	Guns, over 300 mm	DLA
1040	Chemical Weapons and Equipment	DLA
1045	Launchers, Torpedo and Depth Charge	DLA
1055	Launchers, Grenade, Rocket and Pyrotechnic	DLA
1070	Nets and Booms, Ordnance	Excluded
1075	Degaussing and Mine Sweeping Equipment	DLA
1080	Camouflage and Deception Equipment	DLA
1090	Assemblies Interchangeable Between Weapons in Two or More Classes	DLA
1095	Miscellaneous Weapons	DLA
1105	Nuclear Bombs Excluded	Excluded
1110	Nuclear Projectiles Excluded	Excluded
1115	Nuclear Warheads and Warhead Sections Excluded	Excluded
1120	Nuclear Depth Charges Excluded	Excluded
1125	Nuclear Demolition Charges Excluded	Excluded
1127	Nuclear Rockets	Excluded
1130	Conversion Kits, Nuclear Ordnance	Excluded
1135	Fuzing and Firing Devices, Nuclear Ordnance	Excluded
1140	Nuclear Components	Excluded
1145	Explosive and Pyrotechnic Components, Nuclear Ordnance	Excluded
1190	Specialized Test and Handling Equipment, Nuclear Ordnance	Excluded
1195	Miscellaneous Nuclear Ordnance	Excluded
1210	Fire Control Directors	DLA
1220	Fire Control Computing Sights and Devices	DLA
1230	Fire Control Systems, Complete	Excluded
1240	Optical Sighting and Ranging Equipment	DLA
1250	Fire Control Stabilizing Mechanisms	DLA
1260	Fire Control Designating and Indicating Equipment	DLA
1265	Fire Control Transmitting and Receiving Equipment, Except Airborne	DLA
1270	Aircraft Gunnery Fire Control Components	DLA
1280	Aircraft Bombing Fire Control Components	DLA

Table 1. IMM Assignments of FSCs For Consumable Items, Continued

FSC	Title	Designated IM
1285	Fire Control Radar Equipment, Except Airborne	DLA
1287	Fire Control Sonar Equipment	DLA
1290	Miscellaneous Fire Control Equipment	DLA
1305	Ammunition, through 30 mm	Excluded
1310	Ammunition, over 30 mm up to 75 mm	Excluded
1315	Ammunition, 75 mm through 125 mm	Excluded
1320	Ammunition, over 125 mm	Excluded
1325	Bombs	Excluded
1330	Grenades	Excluded
1336	Guided Missile Warheads and Explosive Components	Excluded
1337	Guided Missile and Space Vehicle Explosive Propulsion Units, Solid Fuel, and Components	Excluded
1338	Guided Missile and Space Vehicle Inert Propulsion Units Solid Fuel, and Components	Excluded
1340	Rockets, Rocket Ammunition, and Rocket Components	Excluded
1345	Land Mines	Excluded
1350	Underwater Mine Inert Components	Excluded
1351	Underwater Mine Explosive Components	Excluded
1355	Torpedo Inert Components	Excluded
1356	Torpedo Explosive Components	Excluded
1360	Depth Charge Inert Components	Excluded
1361	Depth Charge Explosive Components	Excluded
1365	Military Chemical Agents	Excluded
1370	Pyrotechnics	Excluded
1375	Demolition Materials	Excluded
1376	Bulk Explosives	Excluded
1377	Cartridge and Propellant Actuated Devices and Components	Excluded
1385	Surface Use Explosive Ordnance Disposal Tools and Equipment	Excluded
1386	Underwater Use Explosive Ordnance Disposal and Swimmer Weapons Systems Tools and Equipment	Excluded
1390	Fuzes and Primers	Excluded
1395	Miscellaneous Ammunition	Excluded
1398	Specialized Ammunition Handling and Servicing Equipment	Excluded
1410	Guided Missiles	Excluded
1420	Guided Missile Components	DLA
1425	Guided Missile Systems, Complete	Excluded
1427	Guided Missile Subsystems	Excluded
1430	Guided Missile Remote Control Systems	DLA

Table 1. IMM Assignments of FSCs For Consumable Items, Continued

FSC	Title	Designated IM
1440	Launchers, Guided Missile	DLA
1450	Guided Missile Handling and Servicing Equipment	DLA
1510	Aircraft, Fixed Wing	Excluded
1520	Aircraft, Rotary Wing	Excluded
1540	Gliders	Excluded
1550	Drones	Excluded
1560	Airframe Structural Components	DLA
1610	Aircraft Propellers	DLA
1615	Helicopter Rotor Blades, Drive Mechanism and Components	DLA
1620	Aircraft Landing Gear Components	DLA
1630	Aircraft, Wheel and Brake Systems	DLA
1650	Aircraft Hydraulic, Vacuum, and De-icing Systems	DLA
1660	Aircraft Air Conditioning, Heating, and Pressuring Equipment	DLA
1670	Parachutes; Aerial Pick Up, Delivery, Recovery Systems; and Cargo Tie-Down Equipment	DLA
1680	Miscellaneous Aircraft Accessories and Components	DLA
1710	Aircraft Arresting, Barrier, and Barricade Equipment	DLA
1720	Aircraft Launching Equipment	DLA
1730	Aircraft Ground Servicing Equipment	DLA
1740	Airfield Specialized Trucks and Trailers	DLA
1810	Space Vehicles	Excluded
1820	Space Vehicle Components	DLA
1830	Space Vehicle Remote Control Systems	DLA
1840	Space Vehicle Launchers	DLA
1850	Space Vehicle Handling and Servicing Equipment	DLA
1860	Space Survival Equipment	DLA
1905	Combat Ships and Landing Vessels	Excluded
1910	Transport Vessels, Passenger and Troop	Excluded
1915	Cargo and Tanker Vessels	Excluded
1920	Fishing Vessels	Excluded
1925	Special Service Vessels	Excluded
1930	Barges and Lighters, Cargo	Excluded
1935	Barges and lighters, Special Purpose	Excluded
1940	Small Craft	Excluded
1945	Pontoons and Floating Docks	Excluded

Table 1. IMM Assignments of FSCs For Consumable Items, Continued

FSC	Title	Designated IM
1950	Floating Dry-docks	Excluded
1955	Dredges	Excluded
1990	Miscellaneous Vessels	Excluded
2010	Ship and Boat Propulsion Components	DLA
2020	Rigging and Rigging Gear	DLA
2030	Deck Machinery	DLA
2040	Marine Hardware and Hull Items	DLA
2050	Buoys	DLA
2060	Commercial Fishing Equipment	DLA
2090	Miscellaneous Ship and Marine Equipment	DLA
2210	Locomotives	Excluded
2220	Rail Cars	Excluded
2230	Right-of-Way Construction and Maintenance Equipment, Railroad	DLA
2240	Locomotive and Rail Car Accessories and Components	DLA
2250	Track Material, Railroad	DLA
2305	Ground Effect Vehicles	Excluded
2310	Passenger Motor Vehicles	Excluded
2320	Trucks and Truck Tractors, Wheeled	Excluded
2330	Trailers	Excluded
2340	Motorcycles, Motor Scooters, and Bicycles	Excluded
2350	Combat, Assault, and Tactical Vehicles, Tracked	Excluded
2410	Tractors, Full Track, Low Speed	DLA
2420	Tractors, Wheeled	DLA
2430	Tractors, Track Laying, High Speed	DLA
2510	Vehicular Cab, Body and Frame Structural Components	DLA
2520	Vehicular Power Transmission Components	DLA
2530	Vehicular Brake, Steering, Axle, Wheel, and Track Components	DLA
2540	Vehicular Furniture and Accessories	DLA
2590	Miscellaneous Vehicular Components	DLA
2610	Tires and Tubes, Pneumatic, Except Aircraft	DLA
2620	Tires and Tubes, Pneumatic, Aircraft	DLA
2630	Tires, Solid and Cushion	DLA
2640	Tire Rebuilding and Tire and Tube Repair Materials	DLA



Table 1. IMM Assignments of FSCs For Consumable Items, Continued

FSC	Title	Designated IM
2805	Gasoline Reciprocating Engines, Except Aircraft; and Components	DLA
2810	Gasoline Reciprocating Engines, Aircraft; and Components	DLA
2815	Diesel Engines and Components	DLA
2820	Steam Engines, Reciprocating, and Components	DLA
2825	Steam Turbines and Components	DLA
2830	Water Turbines and Water Wheels, and Components	DLA
2835	Gas Turbines and Jet Engines, Except Aircraft, and Components	DLA
2840	Gas Turbines and Jet Engines, Aircraft, and Components	DLA
2845	Rocket Engines and Components	DLA
2850	Gasoline Rotary Engines and Components	DLA
2895	Miscellaneous Engines and Components	DLA
2910	Engine Fuel System Components, Non-aircraft	DLA
2915	Engine Fuel System Components, Aircraft	DLA
2920	Engine Electrical System Components, Non-aircraft	DLA
2925	Engine Electrical System Components, Aircraft	DLA
2930	Engine Cooling System Components, Non-aircraft	DLA
2935	Engine Cooling System Components, Aircraft	DLA
2940	Engine Air and Oil Filters, Strainers, and Cleaners, Non-aircraft	DLA
2945	Engine Air and Oil Filters, Strainers, and Cleaners, Aircraft	DLA
2950	Turbo-superchargers	DLA
2990	Miscellaneous Engine Accessories, Non-aircraft	DLA
2995	Miscellaneous Engine Accessories, Aircraft	DLA
3010	Torque Converters and Speed Changers	DLA
3020	Gears, Pulleys, Sprockets, and Transmission Chain	DLA
3030	Belting, Drive Belts, Fan Belts, and Accessories	DLA
3040	Miscellaneous Power Transmission Equipment	DLA
3110	Bearings, Antifriction, Unmounted	DLA
3120	Bearings, Plain, Unmounted	DLA
3130	Bearings, Mounted	DLA
3210	Sawmill and Planning Mill Machinery	DLA
3220	Woodworking Machines	DLA
3230	Tools and Attachment for Woodworking Machinery	DLA
3405	Saws and Filing Machines	DLA
3408	Electrical and Ultrasonic Erosion Machines	DLA
3410	Electrical and Ultrasonic Erosion Machines	DLA

Table 1. IMM Assignments of FSCs For Consumable Items, Continued

FSC	Title	Designated IM
3411	Boring Machines	DLA
3412	Broaching Machines	DLA
3413	Drilling and Tapping Machines	DLA
3414	Gear Cutting and Finishing Machines	DLA
3415	Grinding Machines	DLA
3416	Lathes	DLA
3417	Milling Machines	DLA
3418	Planers and Shapers	DLA
3419	Miscellaneous Machine Tools	DLA
3422	Rolling Mills and Drawing Machines	DLA
3424	Metal Heat Treating and Non-Thermal Treating Equipment	DLA
3426	Metal Finishing Equipment	DLA
3431	Electric Arc-Welding Equipment	DLA
3432	Electric Resistance Welding Equipment	DLA
3433	Gas Welding, Heat Cutting, and Metalizing Equipment	DLA
3436	Welding Positioners and Manipulators	DLA
3438	Miscellaneous Welding Equipment	DLA
3439	Miscellaneous Welding, Soldering, and Brazing Supplies and Accessories	DLA
3441	Bending and Forming Machines	DLA
3442	Hydraulic and Pneumatic Presses, Power Driven	DLA
3443	Mechanical Presses, Power Driven	DLA
3444	Manual Presses	DLA
3445	Punching and Shearing Machines	DLA
3446	Forging Machinery and Hammers	DLA
3447	Wire and Metal Ribbon Forming Machines	DLA
3448	Riveting Machines	DLA
3449	Miscellaneous Secondary Metal Forming and Cutting Machines	DLA
3450	Cutting Tools for Machine Tools	DLA
3455	Cutting Tools for Machine Tools	DLA
3456	Cutting and Forming Tools for Secondary Metalworking Machinery	DLA
3460	Machine Tool Accessories	DLA
3461	Accessories for Secondary Metalworking Machine	DLA
3465	Production Jigs, Fixtures, and Templates	DLA
3470	Machine Shop Sets, Kits, and Outfits	DLA
3510	Laundry and Dry-Cleaning Equipment	DLA
3520	Shoe Repairing Equipment	DLA
3530	Industrial Sewing Machines and Mobile Textile Repair Shops	DLA
3540	Wrapping and Packaging Machinery	GSA

Table 1. IMM Assignments of FSCs For Consumable Items, Continued

FSC	Title	Designated IM
3550	Vending and Coin-Operated Machines	GSA
3590	Miscellaneous Service and Trade Equipment	GSA
3605	Food Products Machinery and Equipment	DLA
3610	Printing, Duplicating, and Bookbinding Equipment	DLA
3611	Industrial Marking Machines	DLA
3615	Pulp and Paper Industries Machinery	DLA
3620	Rubber and Plastics Working Machinery	DLA
3625	Textile Industries Machinery	DLA
3630	Clay and Concrete Products Industries Machine	DLA
3635	Crystal and Glass Industries Machinery	DLA
3640	Tobacco Manufacturing Machinery	DLA
3645	Leather Tanning and Leather Working Industries Machinery	DLA
3650	Chemical and Pharmaceutical Products Manufacturing Machinery	DLA
3655	Gas Generating and Dispensing System, Fixed or Mobile	DLA
3660	Industrial Size Reduction Machinery	DLA
3670	Specialized Semiconductor, Microcircuit, and Printed Circuit Board Manufacturing Machinery	DLA
3680	Foundry Machine, Related Equipment and Supplies	DLA
3685	Specialized Metal Container Manufacturing Machinery and Related Equipment	DLA
3690	Specialized Ammunition and Ordnance Machinery and Related Equipment	DLA
3693	Industrial Assembly Machines	DLA
3694	Clean Work Stations, Controlled Environment, and Related Equipment	DLA
3695	Miscellaneous Special Industry Machinery	DLA
3710	Soil Preparation Equipment	DLA
3720	Harvesting Equipment	DLA
3730	Dairy, Poultry, and Livestock Equipment	DLA
3740	Pest, Disease, and Frost Control Equipment	DLA
3750	Gardening Implements and Tools	GSA
3760	Animal-Drawn Vehicles and Farm Trailers	DLA
3770	Saddlery, Harnesses, Whips, and Related Animal Furnishings	DLA
3805	Earth Moving and Excavating Equipment	DLA
3810	Cranes and Crane-Shovels	DLA
3815	Crane and Crane-Shovel Attachments	DLA
3820	Mining, Rock Drilling, Earth Boring, and Related Equipment	DLA
3825	Road Clearing and Cleaning Equipment	DLA

Table 1. IMM Assignments of FSCs For Consumable Items, Continued

FSC	Title	Designated IM
3830	Truck and Tractor Attachments	DLA
3835	Petroleum Production and Distribution Equipment	DLA
3895	Miscellaneous Construction Equipment	DLA
3910	Conveyors	
3915	Materials Feeders	DLA
3920	Materials Handling Equipment, Non-self-Propelled	DLA
3930	Warehouse Trucks and Tractors, Self-Propelled	DLA
3940	Blocks, Tackle, Rigging, and Slings	DLA
3950	Winches, Hoists, Cranes, and Derricks	DLA
3960	Elevators and Escalators	DLA
3990	Miscellaneous Materials Handling Equipment	DLA
4010	Chain and Wire Rope	DLA
4020	Fiber Rope, Cordage, and Twine	DLA
4030	Fitting for Rope, Cable, and Chain	DLA
4110	Refrigeration Equipment	DLA
4120	Air Conditioning Equipment	DLA
4130	Refrigeration and Air Conditioning Components	DLA
4140	Fans, Air Circulators, and Blower Equipment	DLA
4150	Vortex Tubes and Other Related Cooling Tubes	DLA
4210	Fire Fighting Equipment	DLA
4220	Marine Lifesaving and Diving Equipment	DLA
4230	Decontaminating and Impregnating Equipment	DLA
4235	Hazardous Material Spill Containment and Clean-up Equipment and Materials	DLA
4240	Safety and Rescue Equipment	DLA
4250	Recycling and Reclamation Equipment	DLA
4310	Compressors and Vacuum Pumps	DLA
4320	Power and Hand Pumps	DLA
4330	Centrifugals, Separators, and Pressure and Vacuum Filters	DLA
4410	Industrial Boilers	DLA
4420	Heat Exchangers and Steam Condensers	DLA
4430	Industrial Furnaces, Kilns, Lehrs, and Ovens	DLA
4440	Driers, Dehydrators, and Anhydrators	DLA
4460	Air Purification Equipment	DLA

Table 1. IMM Assignments of FSCs For Consumable Items, Continued

FSC	Title	Designated IM
4470	Nuclear Reactors	Excluded
4510	Plumbing Fixtures and Accessories	DLA
4520	Space-Heating Equipment and Domestic Water Heaters	DLA
4530	Fuel Burning Equipment Units	DLA
4540	Miscellaneous Plumbing, Heating, and Sanitation Equipment	DLA
4610	Water Purification Equipment	DLA
4620	Water Distillation Equipment, Marine and Industrial	DLA
4630	Sewage Treatment Equipment	DLA
4710	Pipe and Tube	DLA
4720	Hose and Tubing, Flexible	DLA
4730	Fittings and Specialties; Hose, Pipe, and Tube	DLA
4810	Valves, Powered	DLA
4820	Valves, Non-powered	DLA
4910	Motor Vehicle Maintenance and Repair Shop Specialized Equipment	DLA
4920	Aircraft Maintenance and Repair Shop Specialized Equipment	DLA
4921	Torpedo Maintenance, Repair, and Checkout Specialized Equipment	DLA
4923	Depth Charges and Underwater Mines Maintenance, Repair, and Checkout Specialized Equipment	DLA
4925	Ammunition Maintenance, Repair, and Checkout Specialized Equipment	DLA
4927	Rocket Maintenance, Repair and Checkout Specialized Equipment	DLA
4930	Lubrication and Fuel Dispensing Equipment	DLA
4931	Fire Control Maintenance and Repair Shop Specialized Equipment	DLA
4933	Weapons Maintenance and Repair Shop Specialized Equipment	DLA
4935	Guided Missile Maintenance, Repair, and Checkout Specialized Equipment	DLA
4940	Miscellaneous Maintenance and Repair Shop Specialized Equipment	DLA
4960	Space Vehicle Maintenance, Repair, and Checkout Specialized Equipment	DLA
5110	Hand Tools, Edged, Non-powered	GSA
5120	Hand Tools, Power-Driven	GSA
5130	Hand Tools, Power-Driven	GSA
5133	Drill Bits, Counterbores, and Countersinks; Hand and Machine	GSA
5136	Taps, Dies, and Collets; Hand and Machine	GSA

Table 1. IMM Assignments of FSCs For Consumable Items, Continued

FSC	Title	Designated IM
5140	Tool and Hardware Boxes	GSA
5180	Specialized Equipment, Kits, Outfits	GSA
5210	Measuring Tools, Craftsmen's	GSA
5220	Inspection Gages and Precision Layout Tools	DLA
5280	Sets, Kits, and Outfits of Measuring Tools	DLA
5305	Screws	DLA
5306	Bolts	DLA
5307	Studs	DLA
5310	Nuts and Washers	DLA
5315	Nails, Keys, and Pins	DLA
5320	Nails, Keys, and Pins	DLA
5325	Fastening Devices	DLA
5330	Packing and Gasket Materials	DLA
5335	Metal Screening	DLA
5340	Miscellaneous Hardware	DLA
5345	Disks and Stones, Abrasive	GSA
5350	Abrasive Materials	GSA
5355	Knobs and Pointers	DLA
5360	Coil, Flat, and Wire Springs	DLA
5365	Rings, Shims, and Spacers	DLA
5410	Prefabricated and Portable Buildings	DLA
5411	Rigid Wall Shelters	DLA
5419	Collective Modular Support System	DLA
5420	Bridges, Fixed and Floating	DLA
5430	Storage Tanks	DLA
5440	Scaffolding Equipment and Concrete Forms	DLA
5445	Prefabricated Tower Structures	DLA
5450	Miscellaneous Prefabricated Structures	DLA
5510	Lumber and Related Basic Wood Materials	DLA
5520	Millwork	DLA
5530	Plywood and Veneer	DLA
5610	Mineral Construction Materials, Bulk	GSA
5620	Tile, Brick, and Block	GSA
5630	Pipe and Conduit, Nonmetallic	GSA

Table 1. IMM Assignments of FSCs For Consumable Items, Continued

FSC	Title	Designated IM
5640	Wallboard; Building Paper, and Thermal Insulation Materials	GSA
5650	Roofing and Siding Materials	GSA
5660	Fencing, Fences, and Gates	DLA
5670	Building Components, Prefabricated	GSA
5675	Non-wood Construction, Lumber, and Related Materials	DLA
5680	Miscellaneous Construction Materials	GSA
5805	Telephone and Telegraph Equipment	DLA
5810	Communications Security Equipment and Components	DLA
5811	Other Cryptologic Equipment and Components	DLA
5815	Teletype and Facsimile Equipment	DLA
5820	Radio and Television Communication Equipment, Except Airborne	DLA
5821	Radio and Television Communication Equipment, Airborne	DLA
5825	Radio Navigation Equipment, Except Airborne	DLA
5826	Radio Navigation Equipment, Airborne	DLA
5830	Intercommunication and Public Address Systems, Except Airborne	DLA
5831	Intercommunication and Public Address Systems, Airborne	DLA
5835	Sound Recording and Reproducing Equipment	DLA
5836	Video Recording and Reproducing Equipment	DLA
5840	Radar Equipment, Except Airborne	DLA
5841	Radar Equipment, Airborne	DLA
5845	Underwater Sound Equipment	DLA
5850	Visible and Invisible Light Communication Equipment	DLA
5855	Night Vision Equipment, Emitted and Reflected Radiation	DLA
5860	Stimulated Coherent Radiation Devices, Components, and Accessories	DLA
5865	Electronic Countermeasures, Counter Countermeasures, and Quick Reaction Capability Equipment	DLA
5895	Miscellaneous Communication Equipment	DLA
5905	Resistors	DLA
5910	Capacitors	DLA
5915	Filters and Networks	DLA
5920	Fuses, Arresters, Absorbers, and Protectors	DLA
5925	Circuit Breakers	DLA
5930	Switches	DLA
5935	Connectors, Electrical	DLA
5940	Lugs, Terminals, and Terminal Strips	DLA
5945	Relays and Solenoids	DLA
5950	Coils and Transformers	DLA
5955	Oscillators and Piezoelectric Crystals	DLA

Table 1. IMM Assignments of FSCs For Consumable Items, Continued

FSC	Title	Designated IM
5960	Electron Tubes and Associated Hardware	DLA
5961	Semiconductor Devices and Associated Hardware	DLA
5962	Microcircuits, Electronic	DLA
5963	Electronic Modules	DLA
5965	Headsets, Handsets, Microphones, and Speakers	DLA
5970	Electrical Insulators and Insulating Materials	DLA
5975	Electrical Hardware and Supplies	DLA
5977	Electrical Contact Brushes and Electrodes	DLA
5980	Optoelectronic Devices and Associated Hardware	DLA
5985	Antennas, Waveguide, and Related Equipment	DLA
5990	Synchros and Resolvers	DLA
5995	Cable, Cord, and Wire Assemblies; Communication Equipment	DLA
5996	Amplifiers	DLA
5998	Electrical and Electronic Assemblies; Boards, Cards, and Associated Hardware	DLA
5999	Miscellaneous Electrical and Electronic Components	DLA
6004	Rotary Joints	DLA
6005	Couplers, Splitters, and Mixers	DLA
6006	Attenuators	DLA
6007	Filters	DLA
6008	Optical Multiplexers/Demultiplexers	DLA
6010	Fiber Optic Conductors	DLA
6015	Fiber Optic Cables	DLA
6020	Fiber Optic Cable Assemblies and Harnesses	DLA
6021	Fiber Optic Switches	DLA
6025	Fiber Optic Transmitters	DLA
6026	Fiber Optic Receivers	DLA
6029	Optical Repeaters	DLA
6030	Fiber Optic Devices	DLA
6031	Integrated Optical Circuits	DLA
6032	Fiber Optic Light Sources	DLA
6033	Fiber Optic Photo Detectors	DLA
6034	Fiber Optic Modulators/Demodulators	DLA
6035	Fiber Optic Light Transfer and Image Transfer Devices	DLA
6040	Fiber Optic Sensors	DLA
6050	Fiber Optic Passive Devices	DLA
6070	Fiber Optic Accessories and Supplies	DLA
6080	Fiber Optic Kits and Sets	DLA



Table 1. IMM Assignments of FSCs For Consumable Items, Continued

FSC	Title	Designated IM
6099	Miscellaneous Fiber Optic Components	DLA
6105	Motors, Electrical	DLA
6110	Electrical Control Equipment	DLA
6115	Generators and Generator Sets, Electrical	DLA
6116	Fuel Cell Power Units, Components, and Accessories	DLA
6117	Solar Electric Power Systems	DLA
6120	Transformers, Distribution, and Power Station	DLA
6125	Converters, Electrical, Rotating	DLA
6130	Converters, Electrical Non-rotating	DLA
6135	Batteries, Non-rechargeable	DLA
6140	Batteries, Rechargeable	DLA
6145	Wire and Cable, Electrical	DLA
6150	Miscellaneous Electric Power and Distribution Equipment	DLA
6160	Miscellaneous Battery Retaining Fixtures and Liners	DLA
6210	Indoor and Outdoor Electric Lighting Fixtures	DLA
6220	Electric Vehicular Lights and Fixtures	DLA
6230	Electric Portable and Hand Lighting Equipment	DLA
6240	Electric Lamps	DLA
6250	Ballast, Lamp-holders, and Starters	DLA
6260	Nonelectrical Lighting Fixtures	DLA
6310	Traffic and Transit Signal Systems	DLA
6320	Railroad Signal and Warning Devices	DLA
6330	Railroad Signal and Warning Devices	DLA
6340	Aircraft Alarm and Signal Systems	DLA
6350	Miscellaneous Alarm, Signal, and Security Detection Systems	DLA
6505*	Drugs and Biological	DLA
6508*	Medicated Cosmetics and Toiletries	DLA
6510*	Surgical Dressing Materials	DLA
6515*	Medical and Surgical Instruments, Equipment, and Supplies	DLA
6520*	Dental Instruments, Equipment and Supplies	DLA
6525*	X-Ray Equipment and Supplies: Medical, Dental, Veterinary	DLA
6530*	Hospital Furniture, Equipment, Utensils, and Supplies	DLA
6532*	Hospital and Surgical Clothing and Related Special Purpose Items	DLA
6540*	Ophthalmic Instruments, Equipment, and Supplies	DLA
6545*	Replenishable Field Medical Sets, Kits, and Outfits	DLA
6550*	In Vitro Diagnostic Substances, Reagents, Test Kits, and Sets	DLA

Table 1. IMM Assignments of FSCs For Consumable Items, Continued

FSC	Title	Designated IM
6605	Navigational Instruments	DLA
6610	Flight Instruments	DLA
6615	Automatic Pilot Mechanisms and Airborne Gyro Components	DLA
6620	Engine Instrument	DLA
6625	Electrical and Electronic Properties Measuring and Testing Instruments	DLA
6630	Chemical Analysis Instruments	DLA
6635	Physical Properties Testing Equipment	DLA
6636	Environmental Chambers and Related Equipment	DLA
6640	Laboratory Equipment and Supplies	DLA
6645	Time Measuring Instruments	DLA
6650	Optical Instruments, Test Equipment, Components, and Accessories	DLA
6655	Geophysical Instruments	DLA
6660	Meteorological Instruments and Apparatus	DLA
6665	Hazard-Detecting Instruments and Apparatus	DLA
6670	Scales and Balances	DLA
6675	Drafting, Surveying, and Mapping Instruments	DLA
6680	Liquid and Gas Flow, Liquid Level, and Mechanical Motion Measuring Instruments	DLA
6685	Pressure, Temperature, and Humidity Measuring and Controlling Instruments	DLA
6695	Combination and Miscellaneous Instruments	DLA
6710	Cameras, Motion Picture	DLA
6720	Cameras, Still Picture	DLA
6730	Photographic Projection Equipment	DLA
6740	Photographic Developing and Finishing Equipment	DLA
6750	Photographic Supplies	DLA
6760	Photographic Equipment and Accessories	DLA
6770	Film, Processed	DLA
6780	Photographic Sets, Kits, and Outfits	DLA
6810	Chemicals	DLA
6820	Dyes	DLA
6830	Gases: Compressed and Liquefied	DLA
6840	Pest Control Agents and Disinfectants	DLA
6850	Miscellaneous Chemical Specialties	DLA
6910	Training Aids	DLA
6920	Armament Training Devices	DLA

Table 1. IMM Assignments of FSCs For Consumable Items, Continued

FSC	Title	Designated IM
6930	Operation Training Devices	DLA
6940	Communication Training Devices	DLA
7010	ADPE System Configuration	DLA
7020	Automatic Data Processing(ADP) Central Processing Unit (CPU), Computer, Analog	DLA
7021	ADP CPU, Computer, Digital	DLA
7022	ADP CPU, Computer, Hybrid	DLA
7025	ADP Input/Output and Storage Devices	DLA
7030	ADP Software	DLA
7035	ADP Support Equipment	DLA
7040	Punched Card Equipment	DLA
7042	Mini and Micro Computer Control Devices	DLA
7045	ADP Supplies	DLA
7050	ADP Components	DLA
7105	Household Furniture	GSA
7110	Office Furniture	GSA
7125	Cabinets, Lockers, Bins, and Shelving	GSA
7195	Miscellaneous Furniture and Fixtures	GSA
7210*	Household Furnishings	DLA
7220	Floor Coverings	GSA
7230	Draperies, Awnings, and Shades	GSA
7240	Household and Commercial Utility Containers	GSA
7290	Miscellaneous Household and Commercial Furnishings and Appliances	GSA
7310	Food Cooking, Baking, and Serving Equipment	DLA
7320	Kitchen Equipment and Appliances	DLA
7330	Kitchen Hand Tools and Utensils	GSA
7340	Cutlery and Flatware	GSA
7350	Tableware	GSA
7360	Sets, Kits, and Outfits: Food Preparation and Serving	DLA
7420	Accounting and Calculating Machines	GSA
7430	Typewriters and Office-Type Composing Machines	GSA
7435	Office Information System Equipment	GSA
7450	Office-Type Sound Recording and Reproducing Machines	DLA
7460	Visible Record Equipment	GSA
7490	Miscellaneous Office Machines	GSA

Table 1. IMM Assignments of FSCs For Consumable Items, Continued

FSC	Title	Designated IM
7510	Office Supplies	GSA
7520	Office Devices and Accessories	GSA
7530	Stationery and Record Forms	GSA
7540	Standard Forms	GSA
7610	Books and Pamphlets	DLA
7630	Newspapers and Periodicals	DLA
7640	Maps, Atlases, Charts, and Globes	DLA
7641*	Aeronautical, Mapping, Charting, and Geodetic Products	DLA
7642*	Hydrographic, Mapping, Charting, and Geodetic Products	DLA
7643*	Topographic, Mapping, Charting, and Geodetic Products	DLA
7644*	Digital, Mapping, Charting, and Geodetic Products	DLA
7650	Drawings and Specifications	DLA
7660	Sheet and Book Music	DLA
7670	Microfilm, Processed	DLA
7690	Miscellaneous Printed Matter	DLA
7710	Musical Instruments	GSA
7720	Musical Instrument Parts and Accessories	GSA
7730	Phonograph, Radio, and Television Sets, Home-type	GSA
7740	Phonographic Records	GSA
7810	Athletic and Sporting Equipment	GSA
7820	Games, Toys, and Wheeled Goods	GSA
7830	Recreational and Gymnastic Equipment	GSA
7910	Floor Polishers and Vacuum Cleaning Equipment	GSA
7920	Brooms, Brushes, Mops, and Sponges	GSA
7930	Cleaning and Polishing Compounds and Preparations	GSA
8010	Paints, Dopes, Varnishes, and Related Products	<del>GSADLA</del>
8020	Paint and Artists' Brushes	<del>GSADLA</del>
8030	Preservative and Sealing Compounds	<del>GSADLA</del>
8040	Adhesives	<del>GSADLA</del>
8105	Bags and Sacks	GSA
8110	Drums and Cans	DLA
8115	Boxes, Cartons, and Crates	GSA
8120	Commercial and Industrial Gas Cylinders	DLA
8125	Bottles and Jars	DLA

Table 1. IMM Assignments of FSCs For Consumable Items, Continued

FSC	Title	Designated IM
8130	Reels and Spools	DLA
8135	Packaging and Packing Bulk Materials	GSA
8140	Ammunition and Nuclear Ordnance Boxes, Packages and Special Containers	DLA
8145	Specialized Shipping and Storage Containers	DLA
8305*	Textile Fabrics	DLA
8310*	Yarn and Thread	DLA
8315*	Notions and Apparel Findings	DLA
8320*	Padding and Stuffing Materials	DLA
8325*	Fur Materials	DLA
8330*	Leather	DLA
8335*	Shoe Findings and Soling Materials	DLA
8340*	Tents and Tarpaulins	DLA
8345*	Flags and Pennants	DLA
8405*	Outerwear, Men's	DLA
8410*	Outerwear, Women's	DLA
8415*	Clothing, Special Purpose	DLA
8420*	Underwear and Nightwear, Men's	DLA
8425*	Underwear and Nightwear, Women's	DLA
8430*	Footwear, Men's	DLA
8435*	Footwear, Women's	DLA
8440*	Hosiery, Handwear, and Clothing Accessories, Men's	DLA
8445*	Hosiery, Handwear, and Clothing Accessories, Women's	DLA
8450*	Children's and Infants' Apparel and Accessories	DLA
8455*	Badges and Insignia	DLA
8460*	Luggage	DLA
8465*	Individual Equipment	DLA
8470*	Armor, Personal	DLA
8475*	Specialized Flight Clothing and Accessories	DLA
8510	Perfumes, Toilet Preparations, and Powders	GSA
8520	Toilet Soap, Shaving Preparations, and Dentifrices	GSA
8530	Personal Toiletry Articles	GSA
8540	Toiletry Paper Products	GSA
8710	Forage and Feed	GSA
8720	Fertilizers	GSA
8730	Seeds and Nursery Stock	GSA

Table 1. IMM Assignments of FSCs For Consumable Items, Continued

FSC	Title	Designated IM
8810*	Live Animals, Raised for Food	DLA
8820	Live Animals, Not Raised for Food	DLA
8905*	Meat, Poultry, and Fish	DLA
8910*	Dairy Foods and Eggs	DLA
8915*	Fruits and Vegetables	DLA
8920*	Bakery and Cereal Products	DLA
8925*	Sugar, Confectionery, and Nuts	DLA
8930*	Jams, Jellies, and Preserves	DLA
8935*	Soups and Bouillons	DLA
8940*	Special Dietary Foods and Food Specialty Preparations	DLA
8945*	Foods, Oils and Fats	DLA
8950*	Condiments and Related Products	DLA
8955*	Coffee, Tea and Cocoa	DLA
8960*	Beverages, Nonalcoholic	DLA
8965*	Beverages, Alcoholic	DLA
8970*	Composite Food Packages	DLA
8975*	Tobacco Products	DLA
9110	Fuels, Solid	DLA
9130*	Liquid Propellant Fuels and Oxidizers, Petroleum Base	DLA
9135	Liquid Propellant Fuels and Oxidizers Chemical Base	Excluded
9140*	Fuel Oils	DLA
9150	Oils and Greases: Cutting, Lubricating and Hydraulic	DLA
9160	Miscellaneous Waxes, Oils, and Fats	DLA
9310	Paper and Paperboard	GSA
9320	Rubber Fabricated Materials	DLA
9330	Plastics Fabricated Materials	DLA
9340	Glass Fabricated Materials	DLA
9350	Refractories and Fire Surfacing Materials	DLA
9390	Miscellaneous Fabricated Nonmetallic Materials	DLA
9410	Crude Grades of Plant Materials	DLA
9420*	Fibers: Vegetable, Animal, and Synthetic	DLA
9430*	Miscellaneous Crude Animal Products, Inedible	DLA
9440	Miscellaneous Crude Agricultural and Forestry Products	DLA
9450	Nonmetallic Scrap, Except Textile	DLA

Table 1. IMM Assignments of FSCs For Consumable Items, Continued

FSC	Title	Designated IM
9505	Wire, Nonelectrical, Iron and Steel	DLA
9510	Bars and Rods, Iron and Steel	DLA
9515	Plate, Sheet, Strip, and Foil: Nonferrous Base Metal	DLA
9520	Structural Shapes, Iron and Steel	DLA
9525	Wire, Nonelectrical, Nonferrous Base Metal	DLA
9530	Bars and Rods, Nonferrous Base Metal	DLA
9535	Plate, Sheet, Strip, Foil, and Wire: Nonferrous Base Metal	DLA
9540	Structural Shapes, Nonferrous Base Metal	DLA
9545	Plate, Sheet, Strip, Foil, and Wire: Precious Metal	DLA
9610	Ores	DLA
9620	Mineral, Natural and Synthetic	DLA
9630	Additive Metal Materials and Master Alloys	DLA
9640	Iron and Steel Primary and Semifinished Products	DLA
9650	Nonferrous Base Metal Refinery and Intermediate Forms	Excluded
9660	Precious Metals Primary Forms	DLA
9670	Iron and Steel Scrap	DLA
9680	Nonferrous Metal Scrap	DLA
9905	Signs, Advertising Displays, and Identification Plates	GSA
9910	Jewelry	GSA
9915	Collectors and/or Historical Items	GSA
9920	Smokers' Articles and Matches	GSA
9925	Ecclesiastical Equipment, Furnishings, and Supplies	DLA
9930	Memorials, Cemeterial and Mortuary Equipment, and Supplies	DLA
9999	Miscellaneous Items	DLA
Asterisk (*) – All items in the FSCs are exempt from IMC. All items in the FSC are managed by the designated IMM except for those items approved for Military Department management on a case-by-case basis.		

Table 2. FSC Excluded From IMC

This table lists those classes for which no IMM is assigned under the auspices of this Manual.	
<u>FSC</u>	<u>Title</u>
1070	Nets and Booms, Ordnance
1105	Nuclear Bombs
1110	Nuclear Projectiles
1115	Nuclear Warheads and Warhead Sections

Table 2. FSC Excluded From IMC, Continued

<u>FSC</u>	<u>Title</u>
1120	Nuclear Depth Charges
1125	Nuclear Demolition Charges
1127	Nuclear Rockets
1130	Conversion Kits, Nuclear Ordnance
1135	Fuzing and Firing Device, Nuclear Ordnance
1140	Nuclear Components
1145	Explosive and Pyrotechnic Components, Nuclear Ordnance
1190	Specialized Test and Handling Equipment, Nuclear Ordnance
1195	Miscellaneous Nuclear Ordnance
1230	Fire Control Systems, Complete
1305	Ammunition, Through 30mm
1310	Ammunition, Over 30mm up thru 75mm
1315	Ammunition, 75mm thru 125mm
1320	Ammunition, Over 125mm
1325	Bombs
1330	Grenades
1336	Guided Missile Warhead and Explosive Components
1337	Guided Missile and Space Vehicle Explosive Propulsion Units, Solid Fuel, and Components
1338	Guided Missile and Space Vehicle Inert Propulsion Units Solid Fuel, and Components
1340	Rockets, Rocket Ammunition, and Rocket Components
1345	Land Mines
1350	Underwater Mine, Inert Components
1351	Underwater Mine, Explosive Components
1355	Torpedo, Inert Components
1356	Torpedo, Explosive Components
1360	Depth Charge, Inert Components
1361	Depth Charge, Explosive Components
1365	Military Chemical Agents
1370	Pyrotechnics
1375	Demolition Materials
1376	Bulk Explosive
1377	Cartridge and Propellant Actuated Devices and Components
1385	Surface Use Explosive Ordnance Disposal Tools and Equipment
1386	Underwater Use Explosive Ordnance Disposal and Swimmer Weapons Systems Tools and Equipment
1390	Fuzes and Primers
1395	Miscellaneous



Table 2. FSC Excluded From IMC, Continued

<u>FSC</u>	<u>Title</u>
1398	Specialized Ammunition Handling and Servicing Equipment
1410	Guided Missiles
1425	Guided Missile Systems, Complete
1427	Guided Missile Subsystems
1510	Aircraft, Fixed Wing
1520	Aircraft, Rotary Wing
1540	Gliders
1550	Drones
1810	Space Vehicle
1905	Combat Ships and Landing Vessels
1910	Transport Vessels, Passenger and Troop
1915	Cargo and Tanker Vessels
1920	Fishing Vessels
1925	Special Service Vessels
1930	Barges and Lighters, Cargo
1935	Barges and Lighters, Special Purpose
1940	Small Craft
1945	Pontoons and Floating Docks
1950	Floating Dry-docks
1955	Dredges
1990	Miscellaneous Vessels
2210	Locomotives
2220	Rail Cars
2305	Ground Effect Vehicles
2310	Passenger Motor Vehicles
2320	Trucks and Truck Tractors, Wheeled
2330	Trailers
2340	Motorcycles, Motor Scooters, and Bicycles
2350	Combat, Assault, and Tactical Vehicles, Tracked
4470	Nuclear Reactor
9135	Liquid Propellant Fuels and Oxidizers Chemical Base

Figure 1. IMC Filter Chart

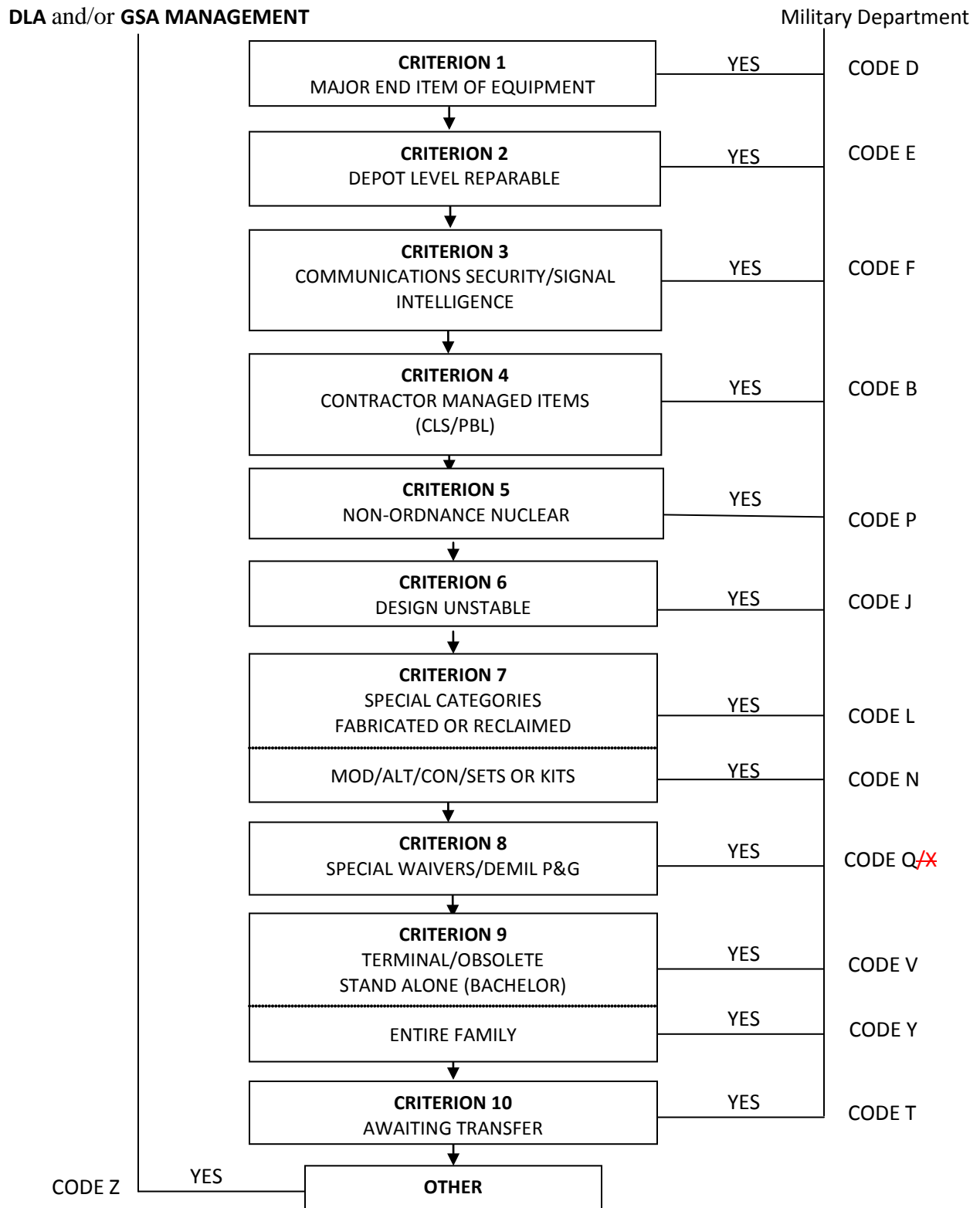
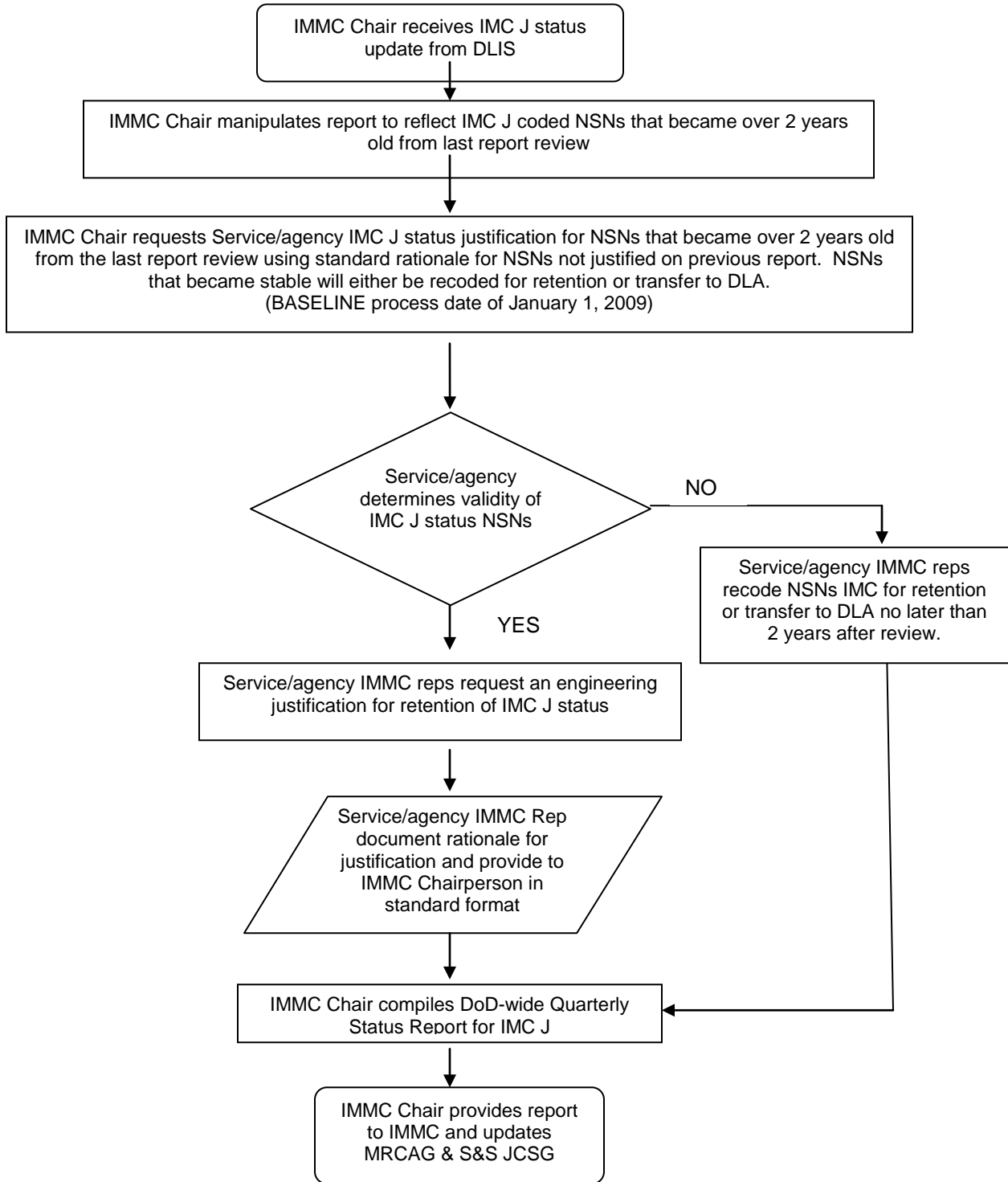


Figure 2. IMC J, Design Unstable, Review Process



GLOSSARY

PART I. ABBREVIATIONS AND ACRONYMS

AAC	acquisition advice code
ASD(L&MR)	Assistant Secretary of Defense for Logistics and Materiel Readiness
CAGE	Commercial and Government Entity
CLS	contractor logistics support
DISA	Defense Information Systems Agency
DLA	Defense Logistics Agency
DLIS	DLA Logistics Information Service
DTRA	Defense Threat Reduction Agency
FAA	Federal Aviation Administration
FSC	Federal supply classification
GSA	General Services Administration
ICP	inventory control point
IM	inventory manager
IMC	item management coding
IMM	integrated materiel management
IMMC	Integrated Materiel Management Committee
I&S	interchangeable and substitutable
mm	millimeter
NSA	National Security Agency
NSN	National Stock Number
NWS	National Weather Service
PBL	performance-based logistics
RNCC	reference number category code
SM&R	source, maintenance and recoverability
TCTO	time compliance technical order
USCG	United States Coast Guard
USD(AT&L)	Under Secretary of Defense for Acquisition, Technology, and Logistics

## PART II. DEFINITIONS

These terms and their definitions set forth standard terminology for use in DoD supply chain materiel management.

AAC. A code denoting how, as distinguished from where, and under what restrictions an item will be acquired.

cataloging. The process of uniformly identifying, describing, classifying, numbering, and publishing in the Federal Catalog System all items of personal property (items of supply) repetitively procured, stored, issued, and/or used by Federal agencies.

component (materiel). Defined in Joint Publication 1-02 (Reference (f)).

consumable item. An item of supply or an individual item (except explosive ordnance and major end items of equipment) that is normally expended or used up beyond recovery in the use for which it is designed or intended.

Defense Integrated Materiel Management Program. A Department of Defense-wide program that establishes policies and procedures for eliminating duplication in the wholesale management of consumable items and assigns the appropriate IMM through the application of approved item management coding criteria.

demilitarization code G. Munitions list item demilitarization required – ammunition, explosive, and dangerous articles. Demilitarization, and, if required, declassification and/or removal of sensitive marking or information, will be accomplished prior to physical transfer to a Defense Reutilization and Marketing Office. This code will be used for all ammunition, explosive, and dangerous articles items including those which also require declassification and/or removal of sensitive markings or information.

demilitarization code P. Munitions list item (security-classified item) - declassification, and any other required demilitarization, and removal of any sensitive markings or information will be accomplished prior to accountability or physical transfer to a Defense Reutilization and Marketing Office. This code will not be assigned to ammunition, explosive, and dangerous articles items.

effective transfer date. The scheduled date on which logistics reassignment is effected.

ICP. An organizational unit or activity within the DoD supply system that is assigned the primary responsibility for the materiel management of a group of items either for a particular Military Service or Department and/or agency or for the Department of Defense as a whole. In addition to IMM functions, an ICP may perform other logistics functions in support of a particular Military Service or Department or for a particular end item (e.g., centralized computation of retail requirements levels and engineering tasks associated with weapon system components.)

IMM. Any activity or agency that has been assigned integrated wholesale materiel management responsibility for the Department of Defense and participating Federal agencies. Integrated wholesale materiel management responsibilities include requirements determination, procurement, distribution overhaul and repair of reparable materiel, and disposal of materiel.

IM. Handles all functions related to the tracking and management of materiel. This includes the monitoring of materiel moved into and out of stockroom locations and the reconciling of the inventory balances.

IMC. The process of determining whether items of supply in FSCs assigned for IMM qualify for management by the individual Components other than DLA or GSA.

inventory. Materiel, titled to the U.S. Government, held for sale or issue, held for repair, or held pending transfer to disposal

item of supply. A category of items identified by an NSN with the same form, fit, and function. The individual items (units) included in this category could be manufactured by multiple sources.

logistics reassignment. The transfer of IMM responsibilities from one manager to another.

materiel. Materiel is either serviceable (i.e., in an issuable condition) or unserviceable (i.e., in need of repair to make it serviceable). Operating materials and supplies consist of tangible personal property to be consumed in normal operations.

materiel management. Continuing actions relating to planning, organizing, directing, coordinating, controlling, and evaluating the application of resources to ensure the effective and economical support of military forces. It includes provisioning, cataloging, requirements determination, acquisition, distribution, maintenance, and disposal. The terms “materiel management,” “materiel control,” “inventory control,” “inventory management,” and “supply management” are synonymous.

nonconsumable items of supply. NSN items of supply that are major end items, depot-reparable components, or special management items.

provisioning. The management process of determining and acquiring the range and quantity of support items necessary to operate and maintain an end item of materiel for an initial period of service.

retail. Level of inventory below the wholesale level, either at the consumer level for the purpose of directly providing materiel to ultimate users, or at the intermediate or region level for the purpose of supplying consumer levels or ultimate users in a geographical area.

secondary item. An item of supply that is not defined as a principal item and includes reparable components, subsystems, and assemblies, consumable repair parts, bulk items and material, subsistence, and expendable end items, including clothing and other personal gear.

sub-safe materiel. A quality assurance program designed to provide maximum reasonable assurance that submarine hulls will stay watertight, and that they can recover from unanticipated flooding. Such materiel is tightly controlled to ensure the methods of assembly, maintenance, and testing are correct. Sub-safe materiel requires certification with traceable quality evidence.

supply chain. Those activities that span the functions of supply, maintenance, and distribution.

supply chain management. The integrated process of supply chain materiel management begins with planning the acquisition of customer-driven materiel requirements for commercial sources and ends with the delivery of materiel to operational customers. It includes the materiel returns segment of the process, the flow of reparable materiel to and from maintenance facilities, and the flow of required information in both directions among suppliers, logistics managers, and customers.

supply support request. A transaction identifying requirements for consumable items that is submitted by the component introducing a materiel/weapon system to the IMM.

wholesale. The highest level of organized supply, and as such, procures, repairs, and maintains stocks to resupply the retail levels of supply. The terms “wholesale supply,” “wholesale level of supply,” “wholesale echelon,” and “national inventory” are synonymous.